

LEGEND

- CIL AS-BUILT PIPELINE
- FENCE LINE
- SURVEY/SECTION LINE
- TRACT BORDER
- COUNTY LINE
- EXISTING PIPELINE
- ROAD WAY
- PERMANENT EASEMENT
- PSC CORRIDOR
- POINT OF INTERSECTION
- TEST LEAD
- BLOCK VALVE
- PIPELINE MARKER

GENERAL INFORMATION

ISSUED FOR REVIEW

M.A.O.P.: XXXX P.S.I.G., MINIMUM REQ. TEST PRESSURE - XXXX PSIG

ALL BEARINGS, DISTANCES, AND COORDINATE VALUES CONTAINED HEREON ARE GRID BASED UPON THE NORTH DAKOTA STATE PLANE COORDINATE SYSTEM, NORTH ZONE OF THE NORTH AMERICAN DATUM 1983, INTERNATIONAL FEET

WARNING

A REASONABLE ATTEMPT HAS BEEN MADE TO LOCATE ALL UNDERGROUND OBSTRUCTIONS BUT UTILITIES SHOWN HEREON ARE APPROXIMATE ONLY AND THERE MAY ALSO BE OTHER UNDERGROUND UTILITIES THAT ARE NOT SHOWN. IT IS STILL THE CONTRACTORS RESPONSIBILITY TO LOCATE ALL UNDERGROUND FACILITIES WITHIN WORKING AREA. CONTRACTOR MUST CONTACT ONE CALL UTILITY LOCATION SERVICES AND THE OWNERS OF THE UTILITIES TO VERIFY THEIR LOCATION.

THIS DOCUMENT IS FOR AS-BUILT PURPOSES ONLY AND IS NOT INTENDED TO BE FILED OF RECORD FOR EASEMENT OR ANY OTHER PURPOSE.

ORIGINAL DOCUMENT SIZE: 24" X 36"

REVISION

NO.	DESCRIPTION	DATE

SUMMARY OF MATERIALS

ITEM #	LINEAR FEET	DESCRIPTION
1	1412.7	12" x 500 X-52, FUSION BOND EPOXY
2	58.1	12" x .375 X-52, PAINTED
5	3929.2	12" x .375 X-52, FUSION BOND EPOXY

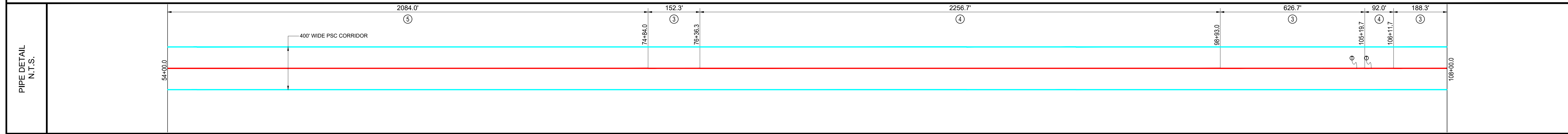
AS-BUILT CONSTRUCTION ALIGNMENT

AS-BUILT PALERMO TO STANLEY 12" PIPELINE 0+00.0 TO 54+00.0

1400 EVERMAN PARKWAY, Ste. 197 • FT. WORTH, TEXAS 76140
 TELEPHONE: (817) 744-7512 • FAX: (817) 744-7548
 WWW.TOPOGRAPHIC.COM

FILE: AB_PALERMO_2_STANLEY	REVISION:
DRAFT: J.M.C	CHECK: B.R.
SHEET: 1 OF 8	DATE: 12/02/16
0	

COUNTY & STATE	MOUNTRAIL COUNTY, NORTH DAKOTA			
SURVEY	SECTION 16, T-156-N, R-90-W	SECTION 17, T-156-N, R-90-W	SECTION 20, T-156-N, R-90-W	
OWNERSHIP FEET/RODS	(MC-01)	(MC-02)	(MC-03)	(MC-04) STATE HIGHWAY 2



LEGEND

- CIL AS-BUILT PIPELINE
- FENCE LINE
- SURVEY/SECTION LINE
- TRACT BORDER
- COUNTY LINE
- EXISTING PIPELINE
- ROAD WAY
- PERMANENT EASEMENT
- PSC CORRIDOR
- POINT OF INTERSECTION
- TEST LEAD
- ⊗ BLOCK VALVE
- ⊙ PIPELINE MARKER

GENERAL INFORMATION

ISSUED FOR REVIEW

M.A.O.P.: XXXX P.S.I.G., MINIMUM REQ. TEST PRESSURE - XXXX PSIG
 ALL BEARINGS, DISTANCES, AND COORDINATE VALUES CONTAINED HEREON ARE GRID BASED UPON THE NORTH DAKOTA STATE PLANE COORDINATE SYSTEM, NORTH ZONE OF THE NORTH AMERICAN DATUM 1983, INTERNATIONAL FEET

WARNING
 A REASONABLE ATTEMPT HAS BEEN MADE TO LOCATE ALL UNDERGROUND OBSTRUCTIONS BUT UTILITIES SHOWN HEREON ARE APPROXIMATE ONLY AND THERE MAY ALSO BE OTHER UNDERGROUND UTILITIES THAT ARE NOT SHOWN. IT IS STILL THE CONTRACTORS RESPONSIBILITY TO LOCATE ALL UNDERGROUND FACILITIES WITHIN WORKING AREA. CONTRACTOR MUST CONTACT ONE CALL UTILITY LOCATION SERVICES AND THE OWNERS OF THE UTILITIES TO VERIFY THEIR LOCATION.
 THIS DOCUMENT IS FOR AS-BUILT PURPOSES ONLY AND IS NOT INTENDED TO BE FILED OF RECORD FOR EASEMENT OR ANY OTHER PURPOSE.

ORIGINAL DOCUMENT SIZE: 24" X 36"

REVISION

NO.	DESCRIPTION	DATE

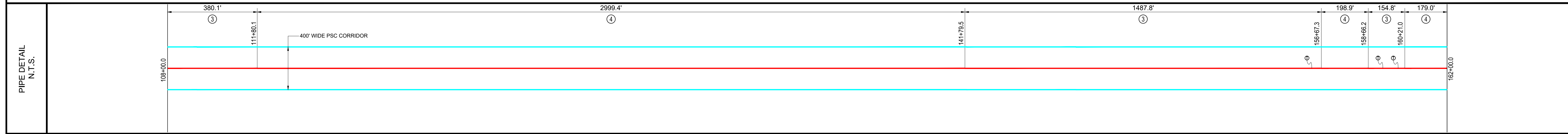
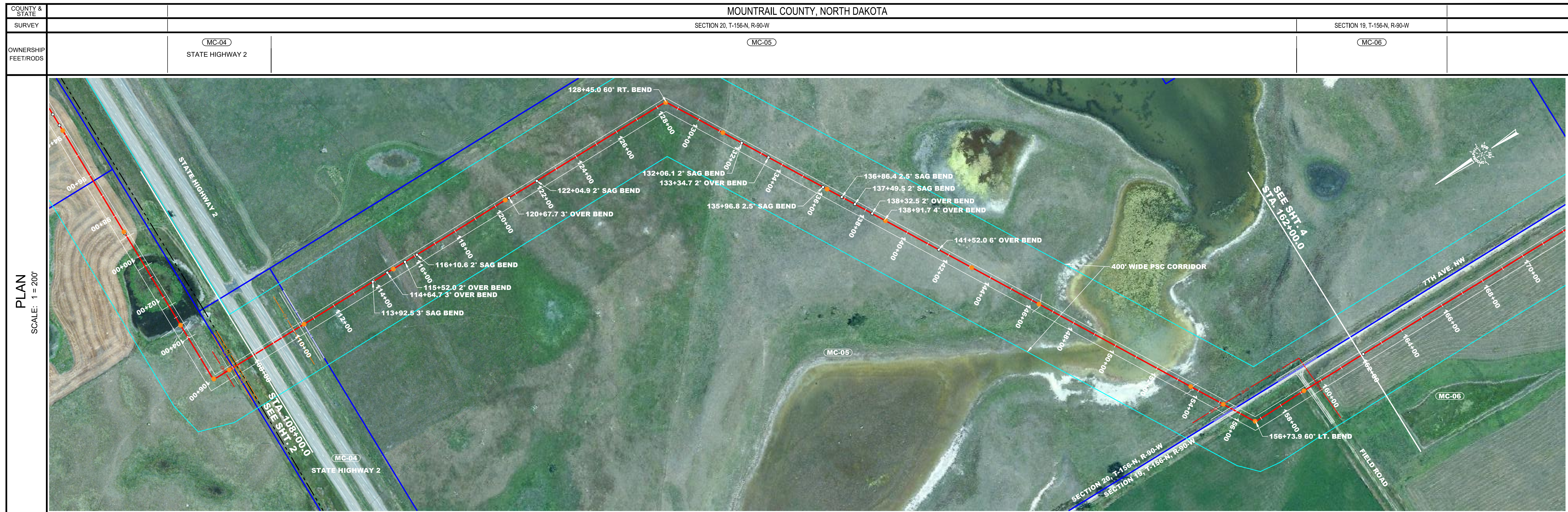
SUMMARY OF MATERIALS

ITEM #	LINEAR FEET	DESCRIPTION
3	967.3	12" x .375 X-52, SCOTCH COAT 2 LAYER
4	2348.7	12" x .312 X-52, FUSION BOND EPOXY
5	2084.0	12" x .375 X-52, FUSION BOND EPOXY

AS-BUILT CONSTRUCTION ALIGNMENT

AS-BUILT PALERMO TO STANLEY 12" PIPELINE 54+00.0 TO 108+00.0

FILE: AB_PALERMO_2_STANLEY	REVISION:
DRAFT: J.M.C	CHECK: B.R.
SHEET: 2 OF 8	DATE: 12/02/16
	0



LEGEND

- CIL AS-BUILT PIPELINE
- FENCE LINE
- SURVEY/SECTION LINE
- TRACT BORDER
- COUNTY LINE
- EXISTING PIPELINE
- ROAD WAY
- PERMANENT EASEMENT
- PSC CORRIDOR
- POINT OF INTERSECTION
- TEST LEAD
- ⊗ BLOCK VALVE
- PIPELINE MARKER

GENERAL INFORMATION

ISSUED FOR REVIEW

M.A.O.P.: XXXX P.S.I.G., MINIMUM REQ. TEST PRESSURE - XXXX PSIG
 ALL BEARINGS, DISTANCES, AND COORDINATE VALUES CONTAINED HEREON ARE GRID
 BASED UPON THE NORTH DAKOTA STATE PLANE COORDINATE SYSTEM, NORTH ZONE
 OF THE NORTH AMERICAN DATUM 1983, INTERNATIONAL FEET

WARNING

A REASONABLE ATTEMPT HAS BEEN MADE TO LOCATE ALL UNDERGROUND OBSTRUCTIONS BUT UTILITIES SHOWN HEREON ARE APPROXIMATE ONLY AND THERE MAY ALSO BE OTHER UNDERGROUND UTILITIES THAT ARE NOT SHOWN. IT IS STILL THE CONTRACTOR'S RESPONSIBILITY TO LOCATE ALL UNDERGROUND FACILITIES WITHIN WORKING AREA. CONTRACTOR MUST CONTACT ONE CALL UTILITY LOCATION SERVICES AND THE OWNERS OF THE UTILITIES TO VERIFY THEIR LOCATION.

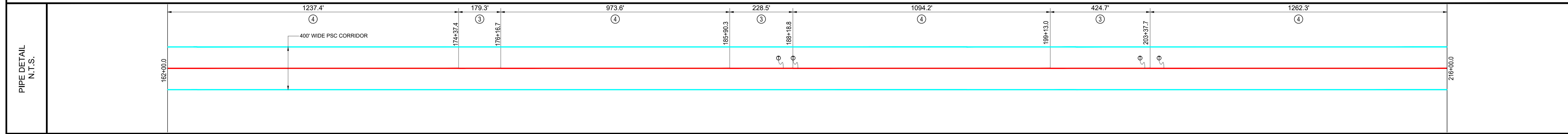
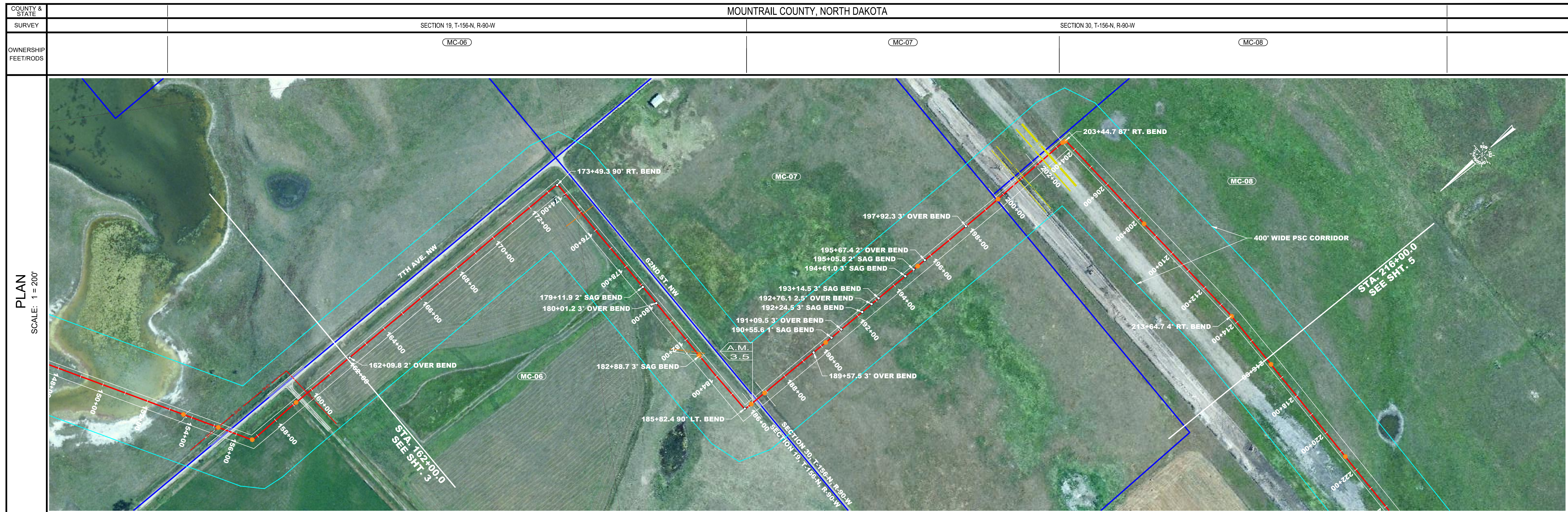
THIS DOCUMENT IS FOR AS-BUILT PURPOSES ONLY AND IS NOT INTENDED TO BE FILED OF RECORD FOR EASEMENT OR ANY OTHER PURPOSE.

ORIGINAL DOCUMENT SIZE: 24" X 36"

REVISION			SUMMARY OF MATERIALS	
NO.	DESCRIPTION	DATE	ITEM #	LINEAR FEET
			3	2022.7
			4	3377.3

AS-BUILT CONSTRUCTION ALIGNMENT	
AS-BUILT PALERMO TO STANLEY 12" PIPELINE 108+00.0 TO 162+00.0	
FILE: AB_PALERMO_2_STANLEY DRAFT: J.M.C SHEET: 3 OF 8	CHECK: B.R. DATE: 12/02/16 REVISION: <div style="text-align: center; font-size: 2em; font-weight: bold;">0</div>





LEGEND

- CIL AS-BUILT PIPELINE
- FENCE LINE
- SURVEY/SECTION LINE
- TRACT BORDER
- - - COUNTY LINE
- EXISTING PIPELINE
- ROAD WAY
- PERMANENT EASEMENT
- PSC CORRIDOR
- POINT OF INTERSECTION
- TEST LEAD
- ⊗ BLOCK VALVE
- PIPELINE MARKER

GENERAL INFORMATION

ISSUED FOR REVIEW

M.A.O.P.: XXXX P.S.I.G., MINIMUM REQ. TEST PRESSURE - XXXX PSIG
 ALL BEARINGS, DISTANCES, AND COORDINATE VALUES CONTAINED HEREON ARE GRID
 BASED UPON THE NORTH DAKOTA STATE PLANE COORDINATE SYSTEM, NORTH ZONE
 OF THE NORTH AMERICAN DATUM 1983, INTERNATIONAL FEET

WARNING

A REASONABLE ATTEMPT HAS BEEN MADE TO LOCATE ALL UNDERGROUND OBSTRUCTIONS BUT UTILITIES SHOWN HEREON ARE APPROXIMATE ONLY AND THERE MAY ALSO BE OTHER UNDERGROUND UTILITIES THAT ARE NOT SHOWN. IT IS STILL THE CONTRACTOR'S RESPONSIBILITY TO LOCATE ALL UNDERGROUND FACILITIES WITHIN WORKING AREA. CONTRACTOR MUST CONTACT ONE CALL UTILITY LOCATION SERVICES AND THE OWNERS OF THE UTILITIES TO VERIFY THEIR LOCATION.

THIS DOCUMENT IS FOR AS-BUILT PURPOSES ONLY AND IS NOT INTENDED TO BE FILED OF RECORD FOR EASEMENT OR ANY OTHER PURPOSE.

ORIGINAL DOCUMENT SIZE: 24" X 36"

REVISION

NO.	DESCRIPTION	DATE

SUMMARY OF MATERIALS

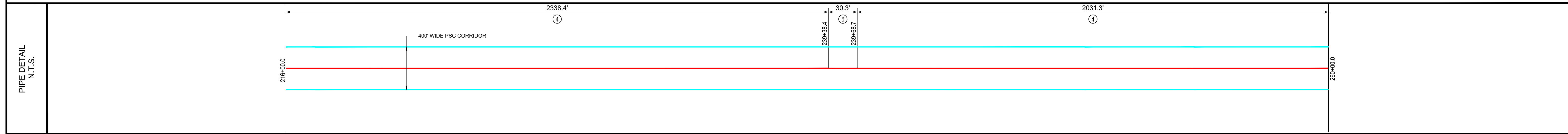
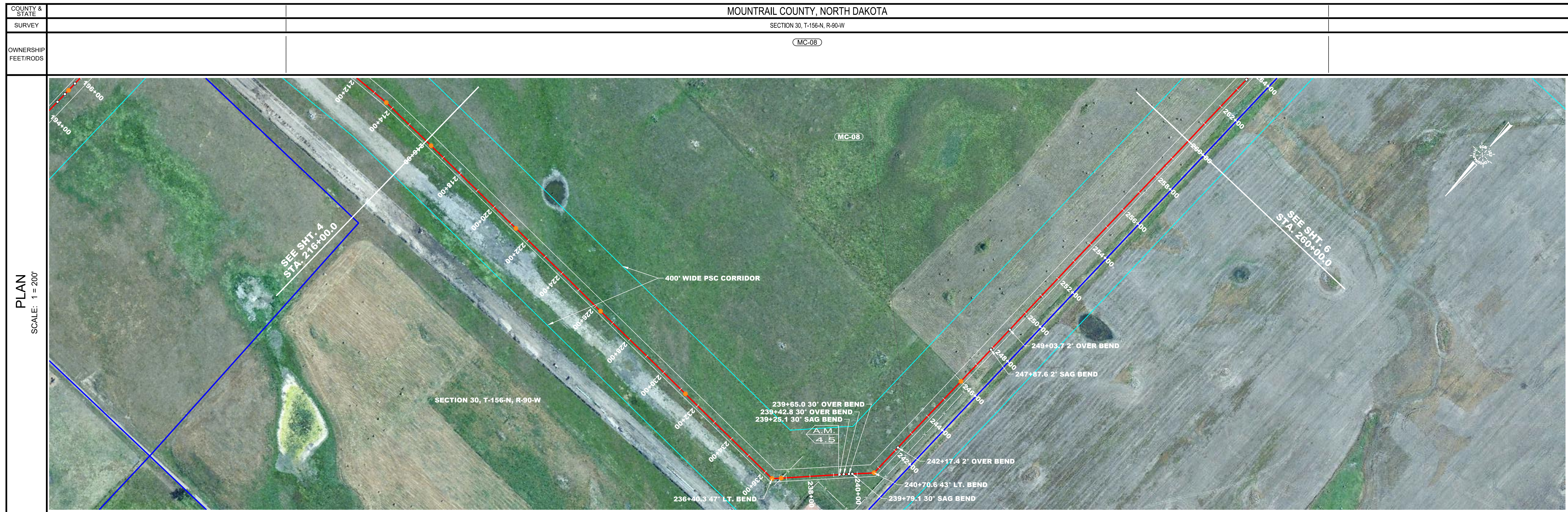
ITEM #	LINEAR FEET	DESCRIPTION
3	832.5	12" x .375 X-52, SCOTCH COAT 2 LAYER
4	4567.5	12" x .312 X-52, FUSION BOND EPOXY

AS-BUILT CONSTRUCTION ALIGNMENT

**AS-BUILT
PALERMO TO STANLEY
12" PIPELINE
162+00.0 TO 216+00.0**

	<table border="1" style="width: 100%; border-collapse: collapse;"> <tr> <td>FILE: AB_PALERMO_2_STANLEY</td> <td>REVISION:</td> </tr> <tr> <td>DRAFT: J.M.C</td> <td>CHECK: B.R.</td> </tr> <tr> <td>SHEET: 4 OF 8</td> <td>DATE: 12/02/16</td> </tr> </table>	FILE: AB_PALERMO_2_STANLEY	REVISION:	DRAFT: J.M.C	CHECK: B.R.	SHEET: 4 OF 8	DATE: 12/02/16
FILE: AB_PALERMO_2_STANLEY	REVISION:						
DRAFT: J.M.C	CHECK: B.R.						
SHEET: 4 OF 8	DATE: 12/02/16						

0



LEGEND

- CIL AS-BUILT PIPELINE
- FENCE LINE
- SURVEY/SECTION LINE
- TRACT BORDER
- COUNTY LINE
- EXISTING PIPELINE
- ROAD WAY
- PERMANENT EASEMENT
- PSC CORRIDOR
- POINT OF INTERSECTION
- TEST LEAD
- BLOCK VALVE
- PIPELINE MARKER

GENERAL INFORMATION

ISSUED FOR REVIEW

M.A.O.P.: XXXX P.S.I.G., MINIMUM REQ. TEST PRESSURE - XXXX PSIG
 ALL BEARINGS, DISTANCES, AND COORDINATE VALUES CONTAINED HEREON ARE GRID BASED UPON THE NORTH DAKOTA STATE PLANE COORDINATE SYSTEM, NORTH ZONE OF THE NORTH AMERICAN DATUM 1983, INTERNATIONAL FEET

WARNING
 A REASONABLE ATTEMPT HAS BEEN MADE TO LOCATE ALL UNDERGROUND OBSTRUCTIONS BUT UTILITIES SHOWN HEREON ARE APPROXIMATE ONLY AND THERE MAY ALSO BE OTHER UNDERGROUND UTILITIES THAT ARE NOT SHOWN. IT IS STILL THE CONTRACTOR'S RESPONSIBILITY TO LOCATE ALL UNDERGROUND FACILITIES WITHIN WORKING AREA. CONTRACTOR MUST CONTACT ONE CALL UTILITY LOCATION SERVICES AND THE OWNERS OF THE UTILITIES TO VERIFY THEIR LOCATION.
 THIS DOCUMENT IS FOR AS-BUILT PURPOSES ONLY AND IS NOT INTENDED TO BE FILED OF RECORD FOR EASEMENT OR ANY OTHER PURPOSE.

ORIGINAL DOCUMENT SIZE: 24" X 36"

REVISION

NO.	DESCRIPTION	DATE

SUMMARY OF MATERIALS

ITEM #	LINEAR FEET	DESCRIPTION
4	4369.7	12" x .312 X-52, FUSION BOND EPOXY
6	30.3	12" x .312 X-52, PAINTED

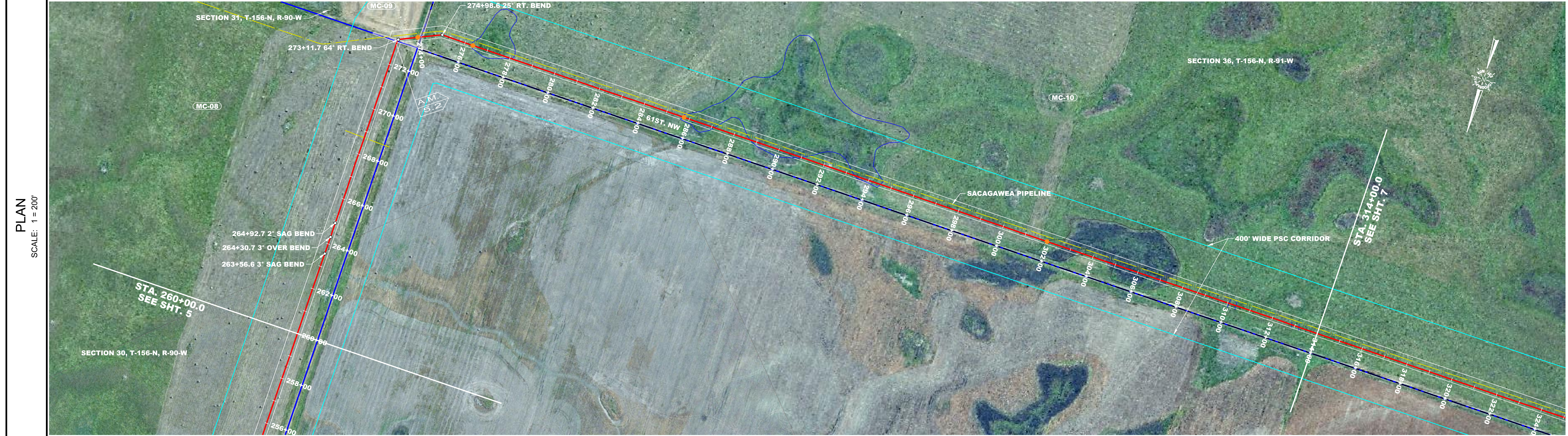
AS-BUILT CONSTRUCTION ALIGNMENT

AS-BUILT PALERMO TO STANLEY 12" PIPELINE 216+00.0 TO 260+00.0

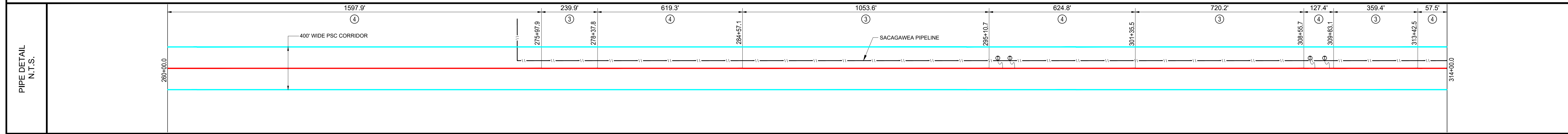
FILE: AB_PALERMO_2_STANLEY	REVISION:
DRAFT: J.M.C	CHECK: B.R.
SHEET: 5 OF 8	DATE: 12/02/16

0

COUNTY & STATE	MOUNTRAIL COUNTY, NORTH DAKOTA		
SURVEY	SECTION 30, T-156-N, R-90-W	SECTION 31, T-156-N, R-90-W	SECTION 36, T-156-N, R-91-W
OWNERSHIP FEET/RODS	(MC-08)	(MC-09)	(MC-10)



PLAN
SCALE: 1" = 200'



LEGEND

- CIL AS-BUILT PIPELINE
- FENCE LINE
- SURVEY/SECTION LINE
- TRACT BORDER
- COUNTY LINE
- EXISTING PIPELINE
- ROAD WAY
- PERMANENT EASEMENT
- PSC CORRIDOR
- POINT OF INTERSECTION
- TEST LEAD
- BLOCK VALVE
- PIPELINE MARKER

GENERAL INFORMATION

ISSUED FOR REVIEW

M.A.O.P.: XXXX P.S.I.G., MINIMUM REQ. TEST PRESSURE - XXXX PSIG
 ALL BEARINGS, DISTANCES, AND COORDINATE VALUES CONTAINED HEREON ARE GRID BASED UPON THE NORTH DAKOTA STATE PLANE COORDINATE SYSTEM, NORTH ZONE OF THE NORTH AMERICAN DATUM 1983, INTERNATIONAL FEET

WARNING
 A REASONABLE ATTEMPT HAS BEEN MADE TO LOCATE ALL UNDERGROUND OBSTRUCTIONS BUT UTILITIES SHOWN HEREON ARE APPROXIMATE ONLY AND THERE MAY ALSO BE OTHER UNDERGROUND UTILITIES THAT ARE NOT SHOWN. IT IS STILL THE CONTRACTOR'S RESPONSIBILITY TO LOCATE ALL UNDERGROUND FACILITIES WITHIN WORKING AREA. CONTRACTOR MUST CONTACT ONE CALL UTILITY LOCATION SERVICES AND THE OWNERS OF THE UTILITIES TO VERIFY THEIR LOCATION.
 THIS DOCUMENT IS FOR AS-BUILT PURPOSES ONLY AND IS NOT INTENDED TO BE FILED OF RECORD FOR EASEMENT OR ANY OTHER PURPOSE.

ORIGINAL DOCUMENT SIZE: 24" X 36"

REVISION

NO.	DESCRIPTION	DATE

SUMMARY OF MATERIALS

ITEM #	LINEAR FEET	DESCRIPTION
3	2373.1	12" x .375 X-52, SCOTCH COAT 2 LAYER
4	3026.9	12" x .312 X-52, FUSION BOND EPOXY

AS-BUILT CONSTRUCTION ALIGNMENT

**AS-BUILT
PALERMO TO STANLEY
12" PIPELINE
260+00.0 TO 314+00.0**

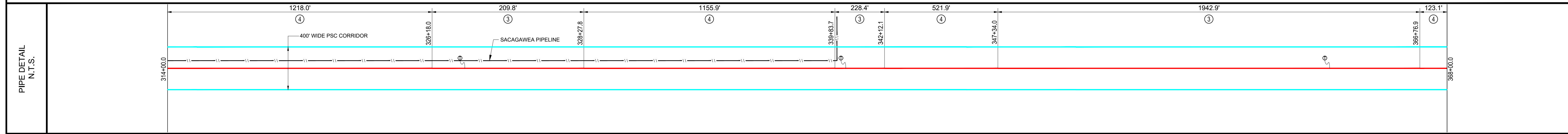
TOPOGRAPHIC
 LOYALTY INNOVATION LEGACY
 1400 EVERMAN PARKWAY, Ste. 197 • FT. WORTH, TEXAS 76140
 TELEPHONE: (817) 764-7512 • FAX: (817) 744-7548
 WWW.TOPOGRAPHIC.COM

FILE: AB_PALERMO_2_STANLEY	REVISION:
DRAFT: J.M.C	CHECK: B.R.
SHEET: 6 OF 8	DATE: 12/02/16
0	

COUNTY & STATE	MOUNTRAIL COUNTY, NORTH DAKOTA			
SURVEY	SECTION 36, T-156-N, R-91-W	SECTION 35, T-156-N, R-91-W	SECTION 26, T-156-N, R-91-W	
OWNERSHIP FEET/RODS	(MC-10)	(MC-11)	(MC-13)	(MC-14)



PLAN
SCALE: 1" = 200'



LEGEND

- CIL AS-BUILT PIPELINE
- FENCE LINE
- SURVEY/SECTION LINE
- TRACT BORDER
- COUNTY LINE
- EXISTING PIPELINE
- ROAD WAY
- PERMANENT EASEMENT
- PSC CORRIDOR
- POINT OF INTERSECTION
- TEST LEAD
- BLOCK VALVE
- PIPELINE MARKER

GENERAL INFORMATION

ISSUED FOR REVIEW

M.A.O.P.: XXXX P.S.I.G., MINIMUM REQ. TEST PRESSURE - XXXX PSIG
 ALL BEARINGS, DISTANCES, AND COORDINATE VALUES CONTAINED HEREON ARE GRID BASED UPON THE NORTH DAKOTA STATE PLANE COORDINATE SYSTEM, NORTH ZONE OF THE NORTH AMERICAN DATUM 1983, INTERNATIONAL FEET

WARNING
 A REASONABLE ATTEMPT HAS BEEN MADE TO LOCATE ALL UNDERGROUND OBSTRUCTIONS BUT UTILITIES SHOWN HEREON ARE APPROXIMATE ONLY AND THERE MAY ALSO BE OTHER UNDERGROUND UTILITIES THAT ARE NOT SHOWN. IT IS STILL THE CONTRACTOR'S RESPONSIBILITY TO LOCATE ALL UNDERGROUND FACILITIES WITHIN WORKING AREA. CONTRACTOR MUST CONTACT ONE CALL UTILITY LOCATION SERVICES AND THE OWNERS OF THE UTILITIES TO VERIFY THEIR LOCATION.
 THIS DOCUMENT IS FOR AS-BUILT PURPOSES ONLY AND IS NOT INTENDED TO BE FILED OF RECORD FOR EASEMENT OR ANY OTHER PURPOSE.

ORIGINAL DOCUMENT SIZE: 24" X 36"

REVISION

NO.	DESCRIPTION	DATE

SUMMARY OF MATERIALS

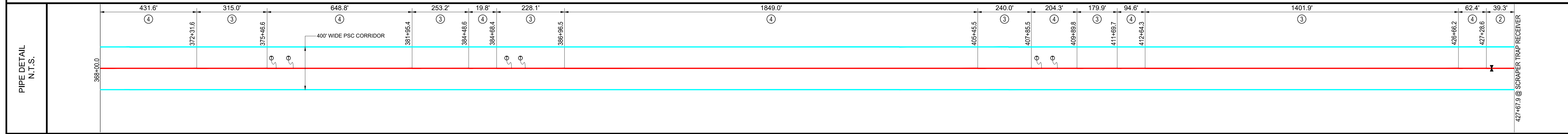
ITEM #	LINEAR FEET	DESCRIPTION
3	2381.1	12" x .375 X-52, SCOTCH COAT 2 LAYER
4	3018.9	12" x .312 X-52, FUSION BOND EPOXY

AS-BUILT CONSTRUCTION ALIGNMENT

AS-BUILT PALERMO TO STANLEY 12" PIPELINE 314+00.0 TO 368+00.0

FILE: AB_PALERMO_2_STANLEY	REVISION:
DRAFT: J.M.C	CHECK: B.R.
SHEET: 7 OF 8	DATE: 12/02/16
	0

COUNTY & STATE	MOUNTRAIL COUNTY, NORTH DAKOTA					
SURVEY	SECTION 26, T-156-N, R-91-W			SECTION 27, T-156-N, R-91-W		
OWNERSHIP FEET/RODS	(MC-14)	(MC-15)	(MC-16)	(MC-17)	(MC-18)	(MC-19)



LEGEND

- CIL AS-BUILT PIPELINE
- FENCE LINE
- SURVEY/SECTION LINE
- TRACT BORDER
- COUNTY LINE
- EXISTING PIPELINE
- ROAD WAY
- PERMANENT EASEMENT
- PSC CORRIDOR
- POINT OF INTERSECTION
- TEST LEAD
- ⊗ BLOCK VALVE
- ⊙ PIPELINE MARKER

GENERAL INFORMATION

ISSUED FOR REVIEW

M.A.O.P.: XXXX P.S.I.G., MINIMUM REQ. TEST PRESSURE - XXXX PSIG
 ALL BEARINGS, DISTANCES, AND COORDINATE VALUES CONTAINED HEREON ARE GRID BASED UPON THE NORTH DAKOTA STATE PLANE COORDINATE SYSTEM, NORTH ZONE OF THE NORTH AMERICAN DATUM 1983, INTERNATIONAL FEET

WARNING
 A REASONABLE ATTEMPT HAS BEEN MADE TO LOCATE ALL UNDERGROUND OBSTRUCTIONS BUT UTILITIES SHOWN HEREON ARE APPROXIMATE ONLY AND THERE MAY ALSO BE OTHER UNDERGROUND UTILITIES THAT ARE NOT SHOWN. IT IS STILL THE CONTRACTORS RESPONSIBILITY TO LOCATE ALL UNDERGROUND FACILITIES WITHIN WORKING AREA. CONTRACTOR MUST CONTACT ONE CALL UTILITY LOCATION SERVICES AND THE OWNERS OF THE UTILITIES TO VERIFY THEIR LOCATION.
 THIS DOCUMENT IS FOR AS-BUILT PURPOSES ONLY AND IS NOT INTENDED TO BE FILED OF RECORD FOR EASEMENT OR ANY OTHER PURPOSE.

ORIGINAL DOCUMENT SIZE: 24" X 36"

REVISION

NO.	DESCRIPTION	DATE

SUMMARY OF MATERIALS

ITEM #	LINEAR FEET	DESCRIPTION
2	39.3	12" x .375 X-52, PAINTED
3	2618.1	12" x .375 X-52, SCOTCH COAT 2 LAYER
4	3310.5	12" x .312 X-52, FUSION BOND EPOXY

AS-BUILT CONSTRUCTION ALIGNMENT

AS-BUILT PALERMO TO STANLEY 12" PIPELINE 368+00.0 TO 427+67.9

TOPOGRAPHIC
 LOYALTY INNOVATION LEGACY
 1400 EVERMAN PARKWAY, Ste. 197 • FT. WORTH, TEXAS 76140
 TELEPHONE: (817) 744-7512 • FAX: (817) 744-7548
 WWW.TOPOGRAPHIC.COM

FILE: AB_PALERMO_2_STANLEY	REVISION:
DRAFT: J.M.C	CHECK: B.R.
SHEET: 8 OF 8	DATE: 12/02/16
	0