

Fig. 1: Laurel Interconnect Pipeline Route

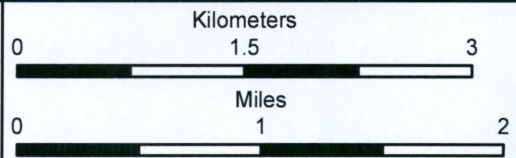
- Proposed Laurel Pipeline
- Interstate Highway
- County Highway
- Secondary Road
- Proposed Mapleton Junction Site
- Proposed Fargo Pump Station
- Cenex Prosper Terminal
- Study Area
- Section Boundary
- Township/Range Boundary

SWCA[®]
 ENVIRONMENTAL CONSULTANTS

116 North 4th Street
 Suite 28
 Bismarck

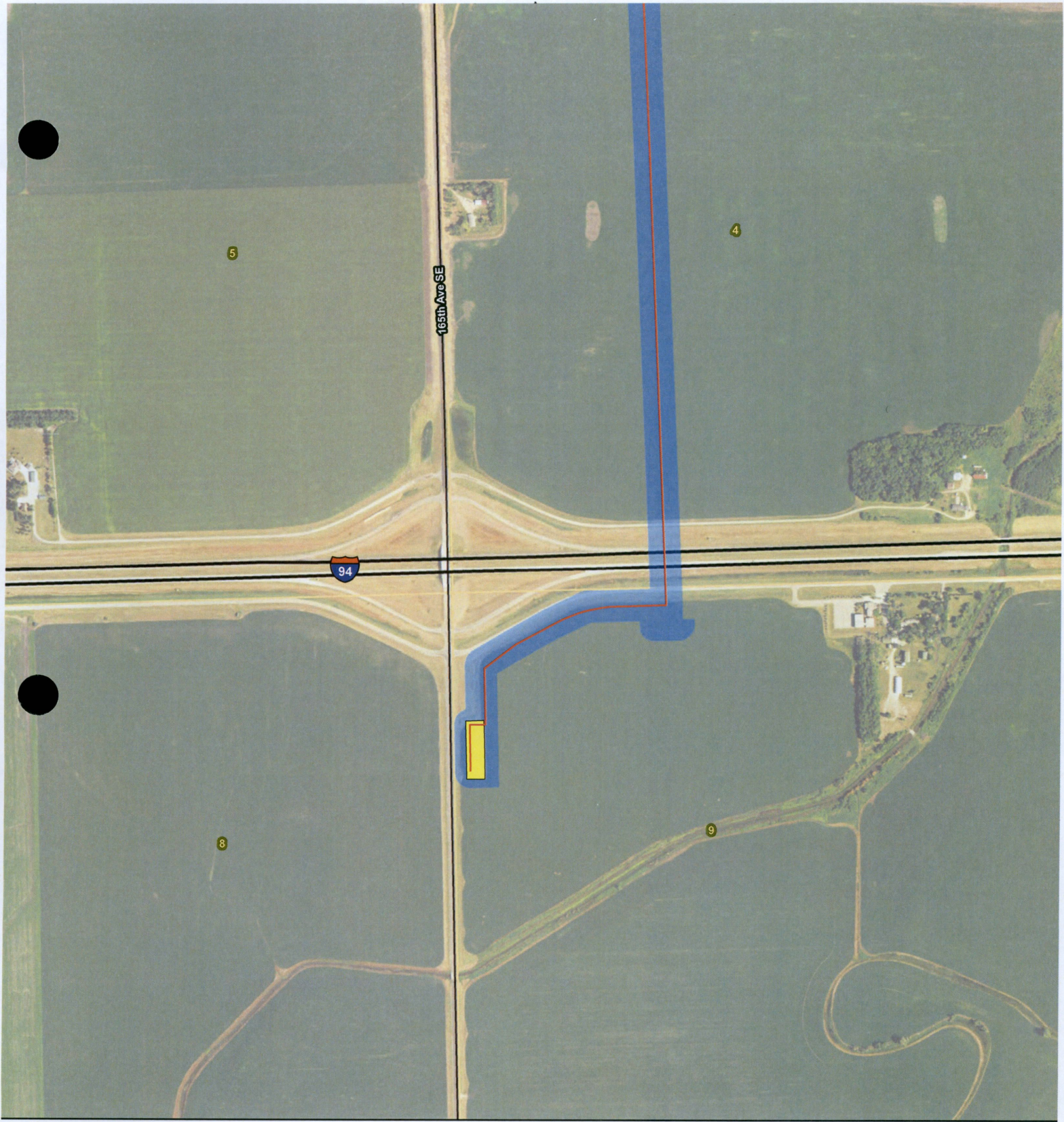
Phone: 701-771-1111
 Fax: 701-771-1112

www.swca.com



28 **PU-15-674** Filed: 2/1/2016 Pages: 6
 Exhibit 3

NuStar Pipeline Operating Partnership L.P.



Laurel Interconnect Pipeline Project - Exclusion and Avoidance Area

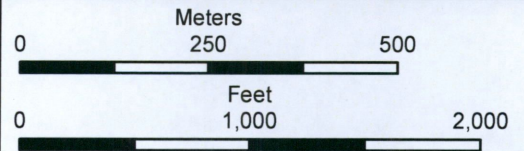
- Proposed Route
- - - Maple River
- Interstate Highway
- County Highway
- Proposed Mapleton Junction Site
- Proposed Pump Station
- Proposed Cenex Prosper Terminal
- Proposed Corridor
- Township/Range Boundary
- Section Boundary



116 North 4th Street
Suite 200
Bismarck, ND 58501

Phone: 701.258.6622
Fax: 701.258.5957

www.swca.com



Base Map: 2014 Aerial Imagery
Source: USDA/FSA -
Aerial Photography Field Office
Quadrangle: Casselton SE (1976)
and Mapleton (1976)
Township/Range: T. 139N, R. 50W

Cass County, North Dakota
Projection: NAD 1983 UTM Zone 14N





**Laurel Interconnect Pipeline Project -
Exclusion and Avoidance Area**

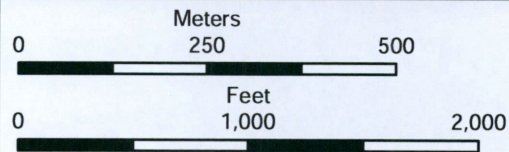
- Proposed Route
- - - Maple River
- Interstate Highway
- County Highway
- Proposed Mapleton Junction Site
- Proposed Pump Station
- Proposed Cenex Prosper Terminal
- Proposed Corridor
- Township/Range Boundary
- Section Boundary

SWCA[®]
ENVIRONMENTAL CONSULTANTS

116 North 4th Street
Suite 200
Bismarck, ND 58501

Phone: 701.258.6622
Fax: 701.258.5957

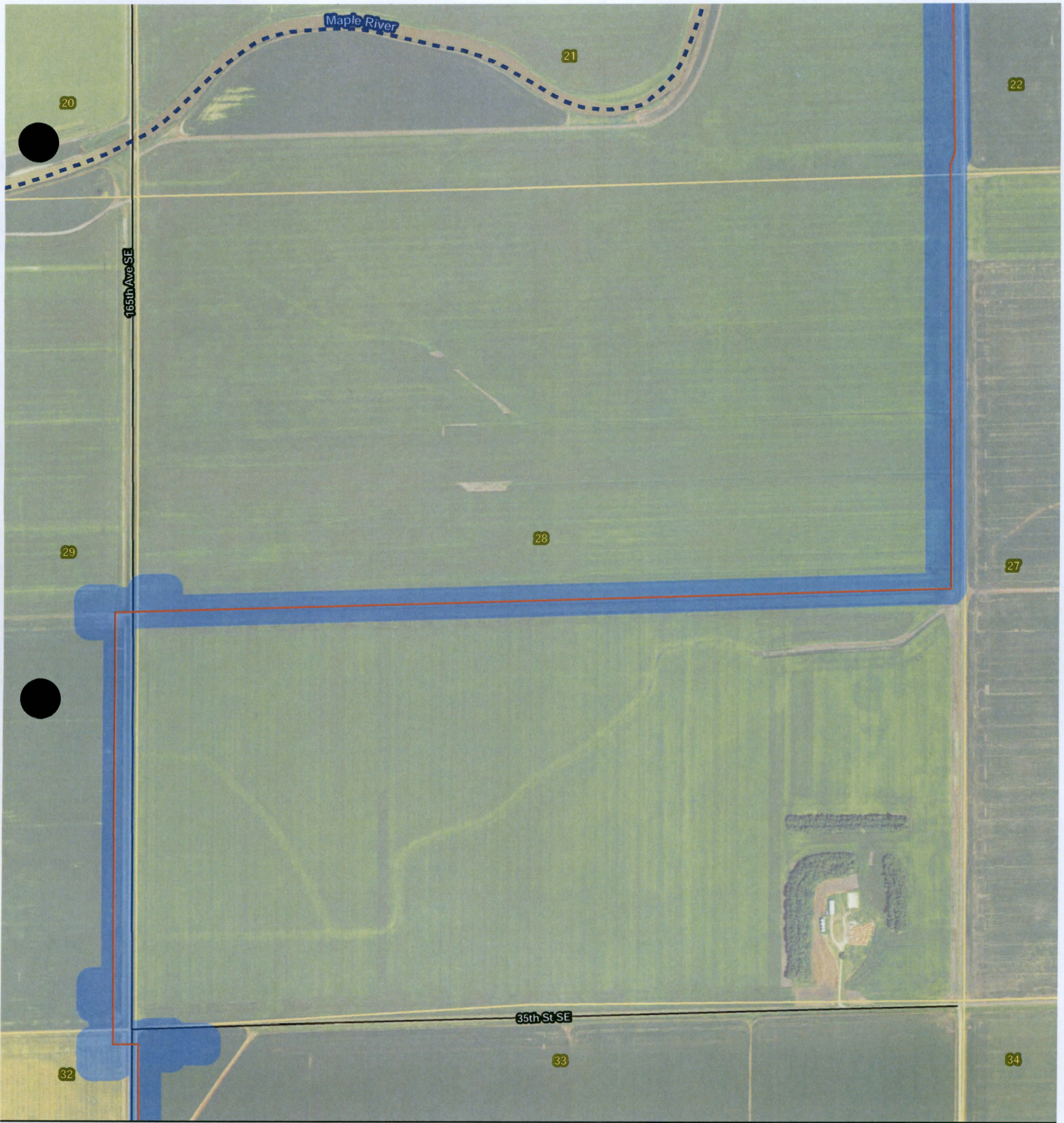
www.swca.com



Base Map: 2014 Aerial Imagery
Source: USDA/FSA -
Aerial Photography Field Office
Quadrangle: Mapleton (1976)

Township/Range: T. 139N, R. 50W
and T. 140N, R. 50W
Cass County, North Dakota
Projection: NAD 1983 UTM Zone 14N





**Laurel Interconnect Pipeline Project -
Exclusion and Avoidance Area**

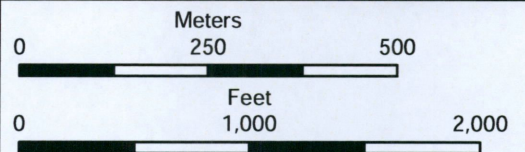
- Proposed Route
- - - Maple River
- Interstate Highway
- County Highway
- Proposed Mapleton Junction Site
- Proposed Pump Station
- Proposed Cenex Prosper Terminal
- Proposed Corridor
- Township/Range Boundary
- Section Boundary

SWCA[®]
ENVIRONMENTAL CONSULTANTS

116 North 4th Street
Suite 200
Bismarck, ND 58501

Phone: 701.258.6622
Fax: 701.258.5957

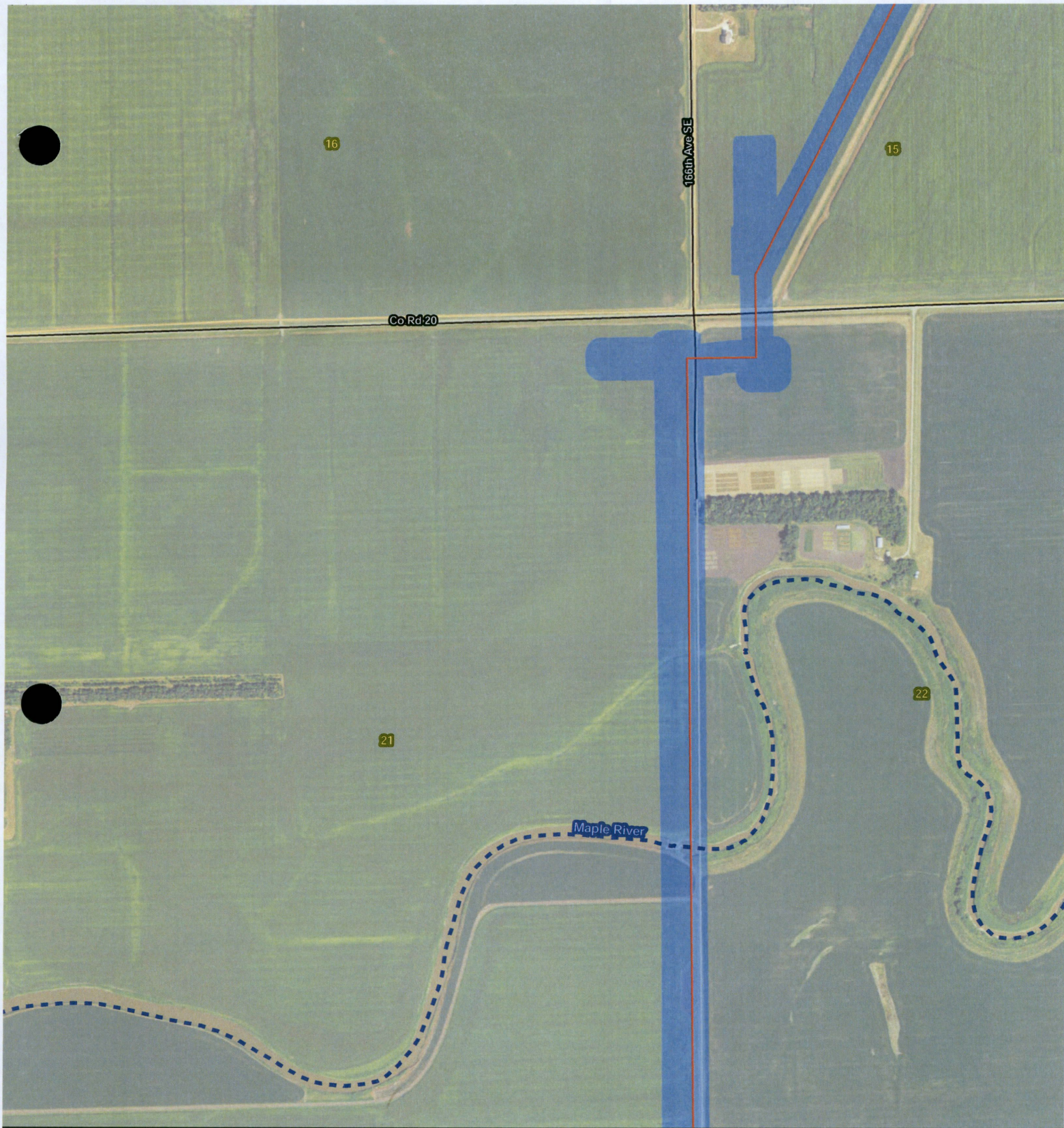
www.swca.com



Base Map: 2014 Aerial Imagery
Source: USDA/FSA -
Aerial Photography Field Office
Quadrangle: Mapleton (1976)
and West Fargo North (1976)
Township/Range: T. 140N, R. 50W

Cass County, North Dakota
Projection: NAD 1983 UTM Zone 14N





**Laurel Interconnect Pipeline Project -
Exclusion and Avoidance Area**

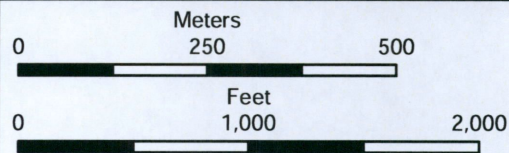
- Proposed Route
- - - Maple River
- Interstate Highway
- County Highway
- Proposed Mapleton Junction Site
- Proposed Pump Station
- Proposed Cenex Prosper Terminal
- Proposed Corridor
- Township/Range Boundary
- Section Boundary



116 North 4th Street
Suite 200
Bismarck, ND 58501

Phone: 701.258.6622
Fax: 701.258.5957

www.swca.com



Base Map: 2014 Aerial Imagery
Source: USDA/FSA -
Aerial Photography Field Office
Quadrangle: West Fargo North (1976)

Township/Range: T. 140N, R. 50W

Cass County, North Dakota
Projection: NAD 1983 UTM Zone 14N





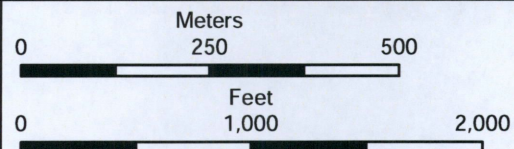
**Laurel Interconnect Pipeline Project -
Exclusion and Avoidance Area**

- Proposed Route
- Maple River
- Interstate Highway
- County Highway
- Proposed Mapleton Junction Site
- Proposed Pump Station
- Proposed Cenex Prosper Terminal
- Proposed Corridor
- Township/Range Boundary
- Section Boundary



116 North 4th Street
Suite 200
Bismarck, ND 58501
Phone: 701.258.6622
Fax: 701.258.5957

www.swca.com



Base Map: 2014 Aerial Imagery
Source: USDA/FSA -
Aerial Photography Field Office
Quadrangle: West Fargo North (1976)

Township/Range: T. 140N, R. 50W

Cass County, North Dakota
Projection: NAD 1983 IITM Zone 14N

