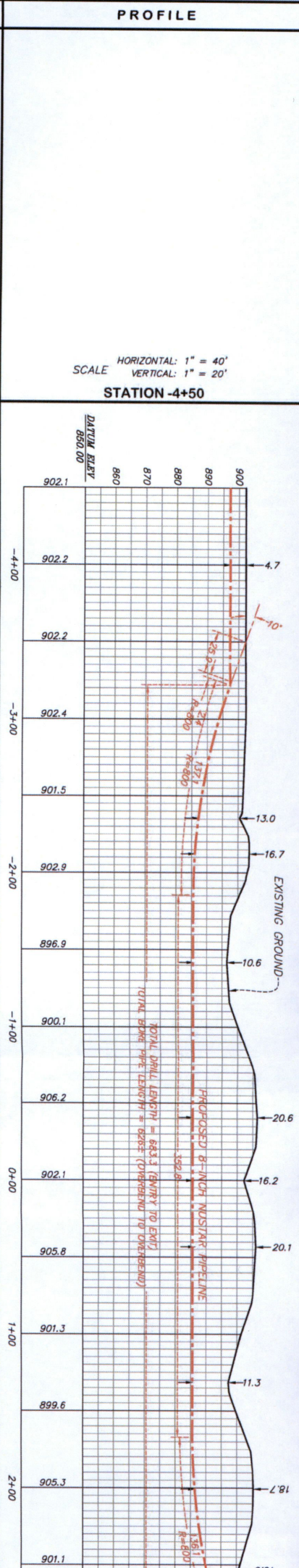
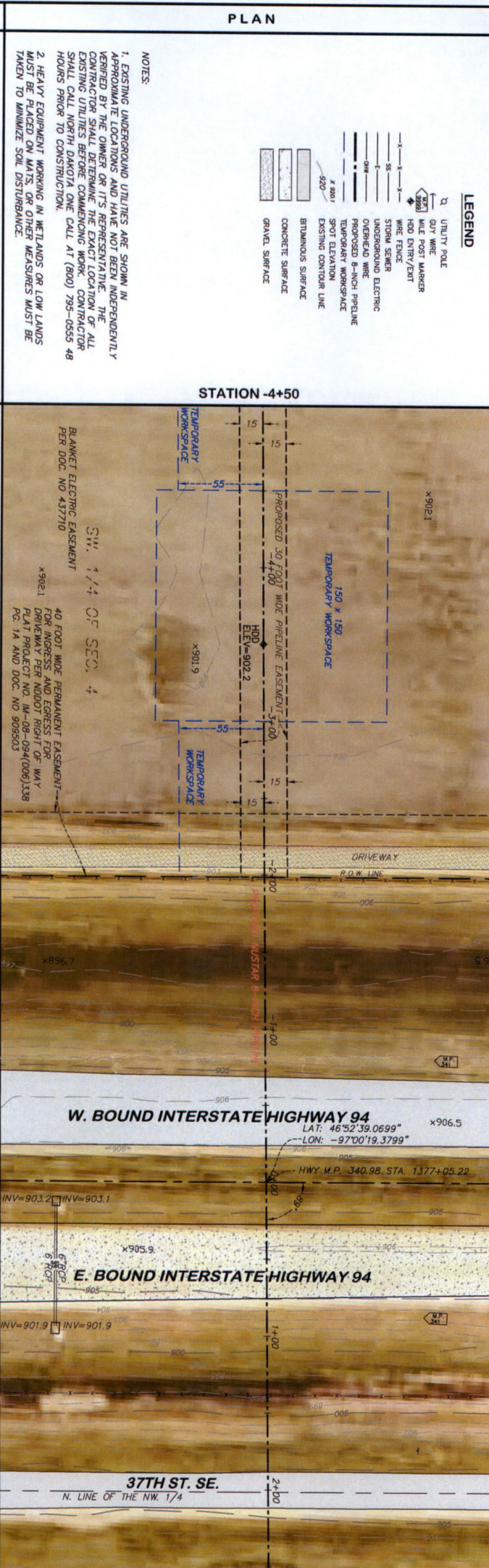


| ALIGNMENT  |
|--|
| -3+50 HDD EXIT   |
| -3+22 OVERBEND   |
| -2+19 EDGE OF GRAVEL   |
| -2+05 EDGE OF GRAVEL   |
| -2+00 HWY R.O.W. LINE  |
| -1+97 WIRE FENCE   |
| -0+69 EDGE OF BITUMINOUS   |
| -0+46 C/L W. BOUND INTERSTATE HIGHWAY 94   |
| -0+24 EDGE OF BITUMINOUS   |
| 0+00 C/L OF HWY PER NDDOT RIGHT OF WAY PLAT PROJECT NO. 1M-08-094(006)338 PG. 1A |
| 0+27 EDGE OF CONCRETE  |
| 0+52 C/L E. BOUND INTERSTATE HIGHWAY 94  |
| 0+76 EDGE OF CONCRETE  |
| 1+38 WIRE FENCE  |
| 1+88 EDGE OF BITUMINOUS  |
| 2+02 C/L 37TH STREET SE.   |
| 2+12 EDGE OF BITUMINOUS  |



| CLASSIFICATION                   | QUANTITY | DESCRIPTION |
|----------------------------------|----------|-------------|
| DESIGN PRESSURE                  | 1830     |             |
| MAX ALLOWABLE OPERATING PRESSURE | 1480     |             |
| NORMAL OPERATING PRESSURE        | 1300     |             |
| DESIGN FACTOR                    | 1.41%    |             |

| NO. | DESCRIPTION                                       | QUANTITY | NO. | DESCRIPTION | QUANTITY |
|-----|---|----------|-----|-------------|----------|
| 1   | 8.625" OD x .250 WT API 5LX-42 ERW 14-16 MILS FBE | 128'     | 2   | 128'        |          |
| 2   | 8.625" OD x .322 WT API 5LX-42 ERW 20-30 MILS ARO | 629'     | 3   | 140'        |          |
| 3   | PIPELINE MARKER                                   | 2        | 4   | 140'        |          |

| SUMMARY            |
|--------------------|
| REFERENCE DRAWINGS |
| DWG FILE           |
| NO.                |
| DATE               |
| BY                 |
| DRAWING REVISION   |
| DESCRIPTION        |
| CHK                |
| ENG                |
| APP                |
| DATE               |

NOTES:

- EXISTING UNDERGROUND UTILITIES ARE SHOWN IN PLAN VIEW. LOCATIONS AND DEPTHS NOT BEEN INDEPENDENTLY VERIFIED BY THE CONTRACTOR. THE CONTRACTOR SHALL VERIFY ALL EXISTING UTILITIES BEFORE COMMENCING WORK. CONTRACTOR SHALL CALL NORTH DAKOTA ONE CALL AT (800) 795-0555 48 HOURS PRIOR TO CONSTRUCTION.
- HEAVY EQUIPMENT WORKING IN WETLANDS OR LOW LANDS MUST BE PLACED ON MATS, OR OTHER MEASURES MUST BE TAKEN TO MINIMIZE SOIL DISTURBANCE.

SCALE  
 HORIZONTAL: 1" = 40'  
 VERTICAL: 1" = 20'

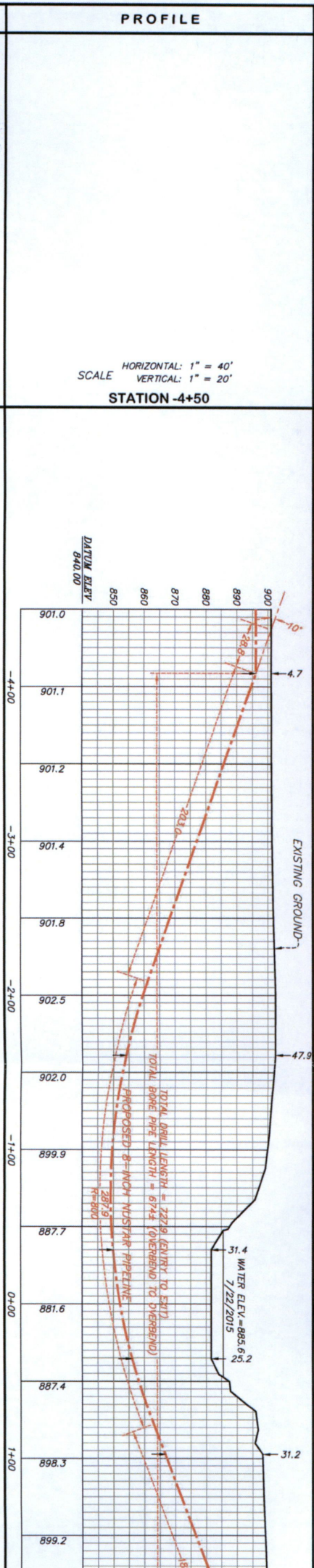
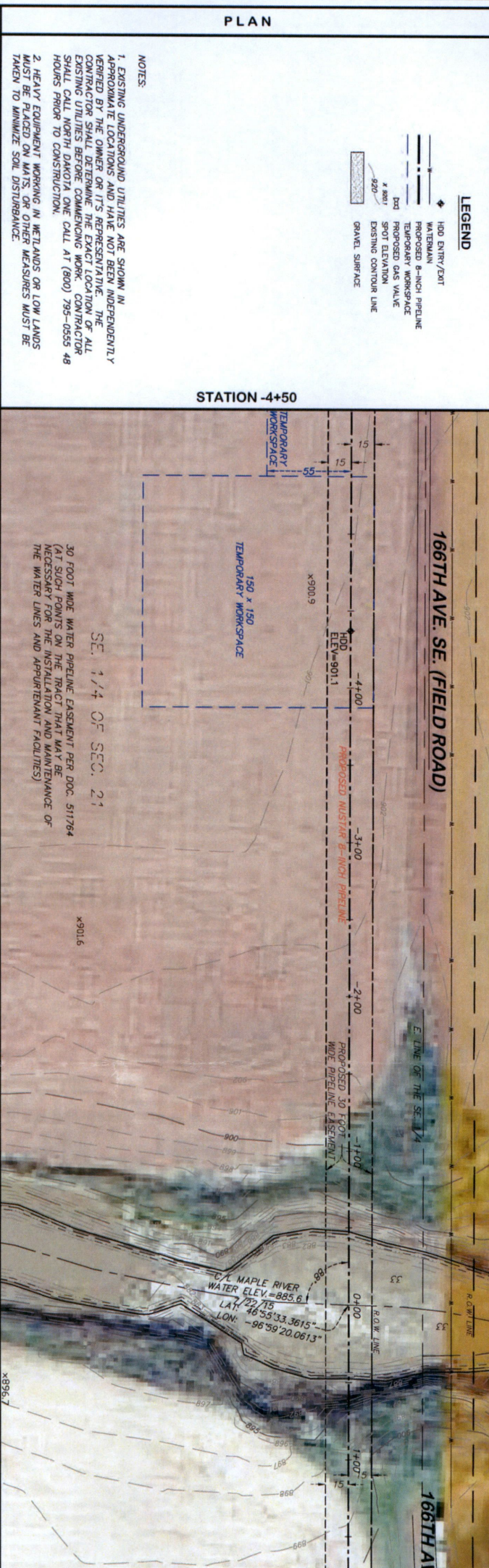
STATION -4+50

STATION -4+50

HORIZONTAL DIRECTIONAL DRILL



|                          |                          |  |     |
|--------------------------|--------------------------|--|-----|
| ENVIRONMENT              | WETLAND / WATERBODY TYPE | OPEN CUT                                   | HDD |
| CONSTRUCTION METHOD      | WATERBODY CLASSIFICATION | CASS COUNTY JOINT WATER RESOURCES DISTRICT |     |
| REGULATORY SPECIFICATION | AC MITIGATION            |  |     |



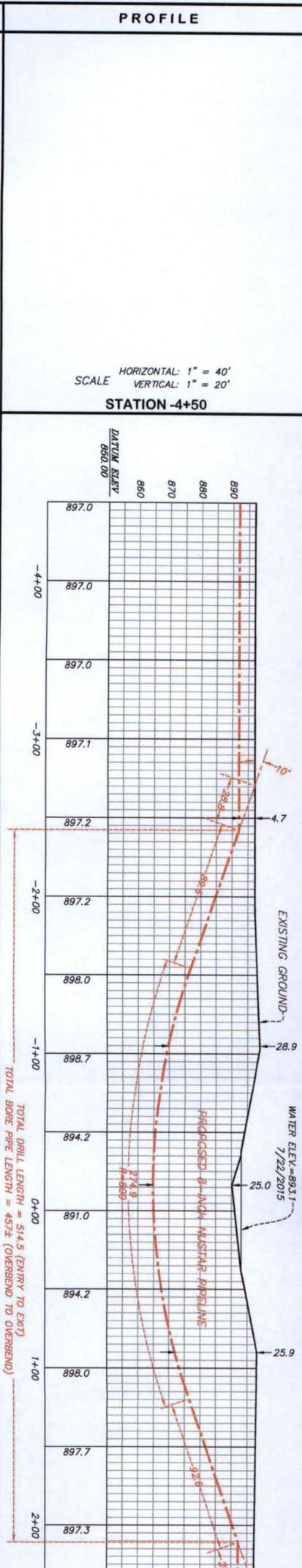
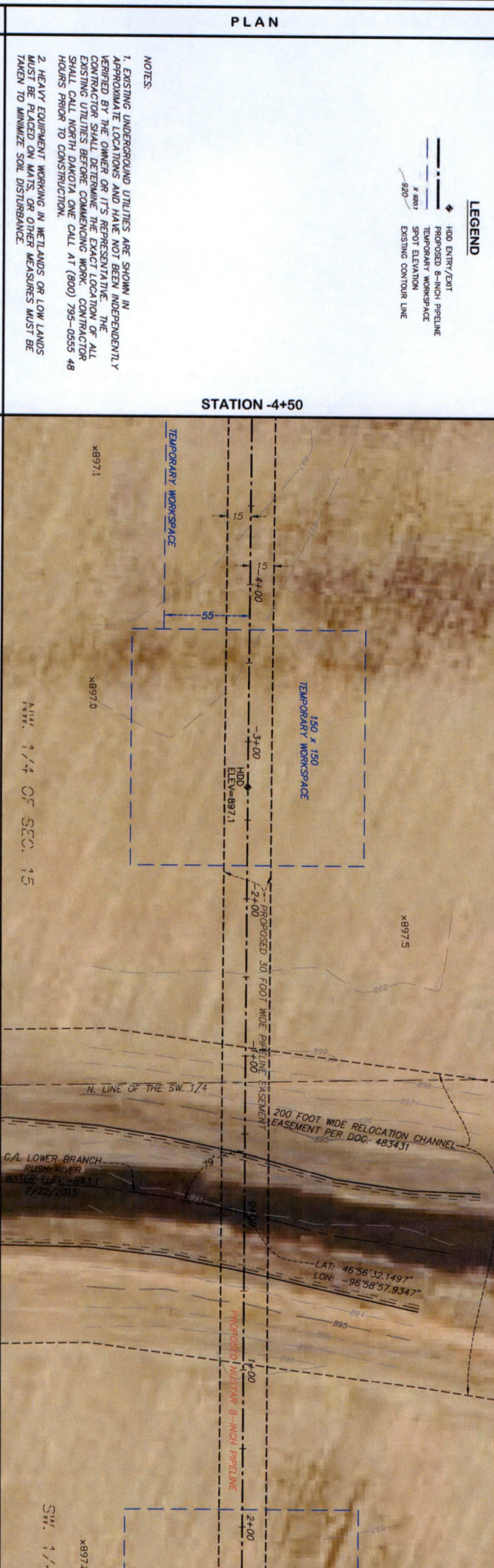
|                                  |  |       |
|----------------------------------|--|-------|
| CLASSIFICATION                   |  | 1830  |
| DESIGN PRESSURE                  |  | 1480  |
| MAX ALLOWABLE OPERATING PRESSURE |  | 1300  |
| NORMAL OPERATING PRESSURE        |  | 1300  |
| DESIGN FACTOR                    |  | 1.41% |

| SUMMARY |   | PIPE DATA |     | PROFILE   |          | PLAN |   | ALIGNMENT |     |
|---------|---|-----------|-----|---|----------|------|---|-----------|-----|
| NO.     | DESCRIPTION                                       | QUANTITY  | NO. | DESCRIPTION                                       | QUANTITY | NO.  | DESCRIPTION                                       | QUANTITY  | NO. |
| 1       | 8.625" OD x .250 WT API 5LX-42 ERW 14-16 MILS FBE | 91'       | 1   | 8.625" OD x .250 WT API 5LX-42 ERW 14-16 MILS FBE | 91'      | 1    | 8.625" OD x .250 WT API 5LX-42 ERW 14-16 MILS FBE | 91'       | 1   |
| 2       | PIPELINE MARKER                                   | 829'      | 2   | PIPELINE MARKER                                   | 829'     | 2    | PIPELINE MARKER                                   | 829'      | 2   |
| 3       | 8" GATE VALVE, 600LB RFFE                         | 4         | 3   | 8" GATE VALVE, 600LB RFFE                         | 4        | 3    | 8" GATE VALVE, 600LB RFFE                         | 4         | 3   |
| 4       | 8" CHECK VALVE WITH 3 FOOT CULVERT SURROUND & LID | 1         | 4   | 8" CHECK VALVE WITH 3 FOOT CULVERT SURROUND & LID | 1        | 4    | 8" CHECK VALVE WITH 3 FOOT CULVERT SURROUND & LID | 1         | 4   |

Egan, Field & Associates, Inc.  
 183'

|                          |  |
|--------------------------|--|
| WETLAND/WATERBODY TYPE   | OPEN CUT                                   |
| WATERBODY CLASSIFICATION |  |
| CONSTRUCTION METHOD      |  |
| REGULATORY SPECIFICATION | CASS COUNTY JOINT WATER RESOURCES DISTRICT |
| AC MITIGATION            |  |

|           |  |
|-----------|--|
| ALIGNMENT | <p>-2+71 HDD EXIT</p> <p>-2+42 OVERBEND</p> <p>-0+90 TOP OF SLOPE</p> <p>-0+38 EDGE OF WATER</p> <p>0+00 C/L LOWER BRANCH RUSH RIVER</p> <p>0+38 EDGE OF WATER</p> <p>0+90 TOP OF SLOPE</p> <p>2+11 OVERBEND</p> <p>2+39 HDD ENTRY</p> |
|-----------|--|



|                                  |       |
|----------------------------------|-------|
| CLASSIFICATION                   | 1830  |
| DESIGN PRESSURE                  | 1480  |
| MAX ALLOWABLE OPERATING PRESSURE | 1300  |
| NORMAL OPERATING PRESSURE        | 1.41% |
| DESIGN FACTOR                    |       |

| SUMMARY |  | PIPE DATA |     | PROFILE     |          | PLAN |             | ALIGNMENT |     | ENVIRONMENT |          |
|---------|--|-----------|-----|-------------|----------|------|-------------|-----------|-----|-------------|----------|
| NO.     | DESCRIPTION                                      | QUANTITY  | NO. | DESCRIPTION | QUANTITY | NO.  | DESCRIPTION | QUANTITY  | NO. | DESCRIPTION | QUANTITY |
| 1       | 8625" OD x .250 WT API 5LX-42 ERW 14-16 MILS FBE | 447'      | 1   | 208'        |          |      |             |           |     |             |          |
| 2       | 8625" OD x .322 WT API 5LX-42 ERW 20-30 MILS ARO | 457'      | 2   | 90'         |          |      |             |           |     |             |          |
| 3       | PIPELINE MARKER                                  | 2         | 3   | 275'        |          |      |             |           |     |             |          |

PIPELINE  
Egon, Field  
1000 AVENUE