

Brady Wind Energy Center

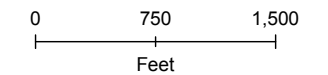
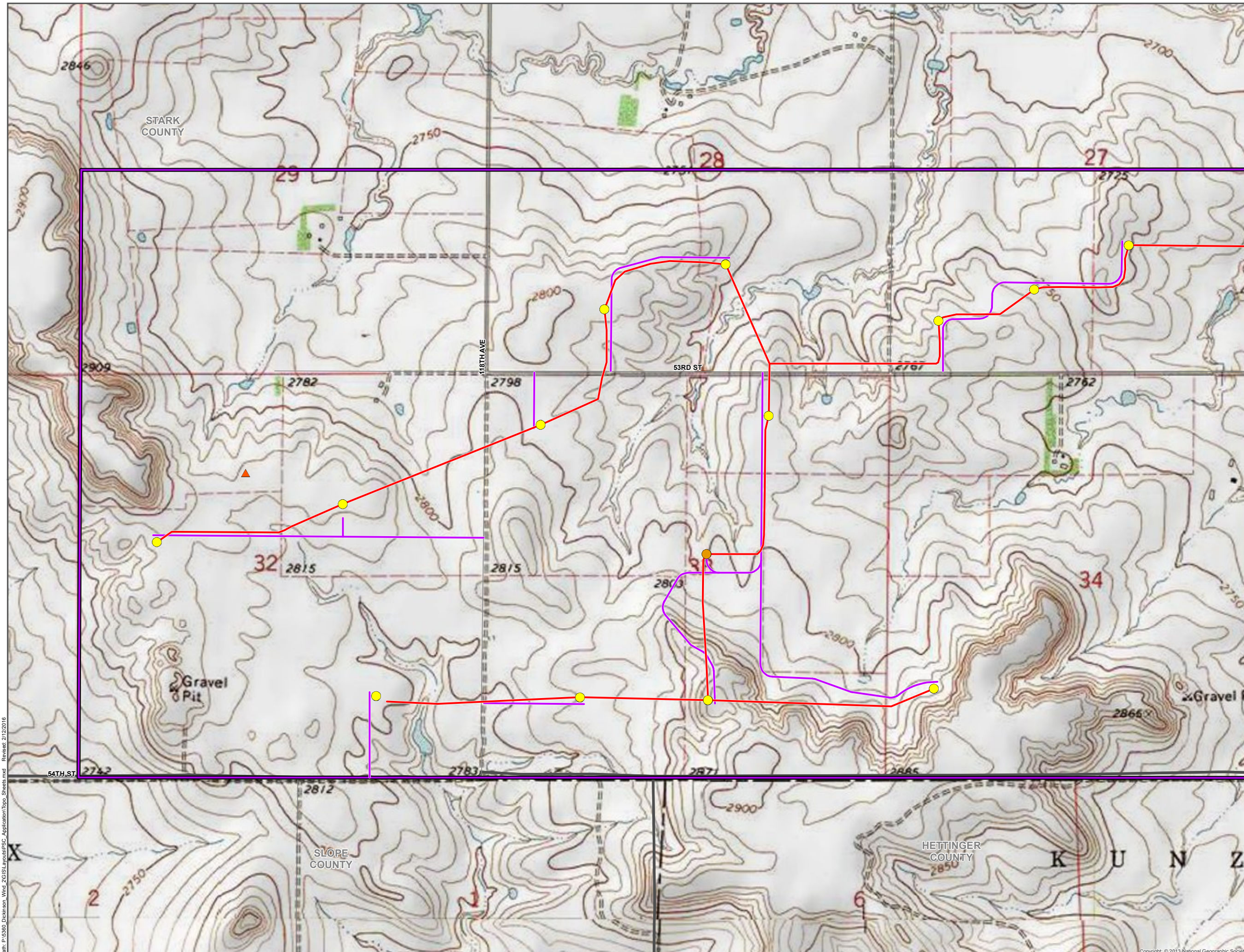
Stark County, ND

Legend

Proposed Project Features

- ▲ Permanent Met Tower
- ▲ Temporary Met Tower
- Proposed Turbine (10/30/15)
- Alternative Turbine (10/30/15)
- Collection System (10/30/15)
- Service Roads (10/30/15)
- Project Boundary (10/21/15)
- Laydown
- Temporary Turbine Storage Area
- O&M Building
- Substation

*USGS Topo



Scale is 1:7,200 when printed at 22 x 34

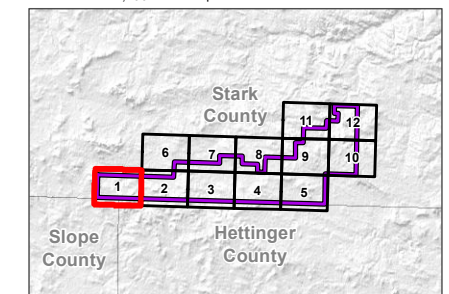


Figure 3: Project Area (Topographical) - Sheet 1

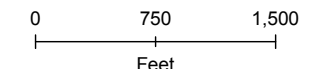
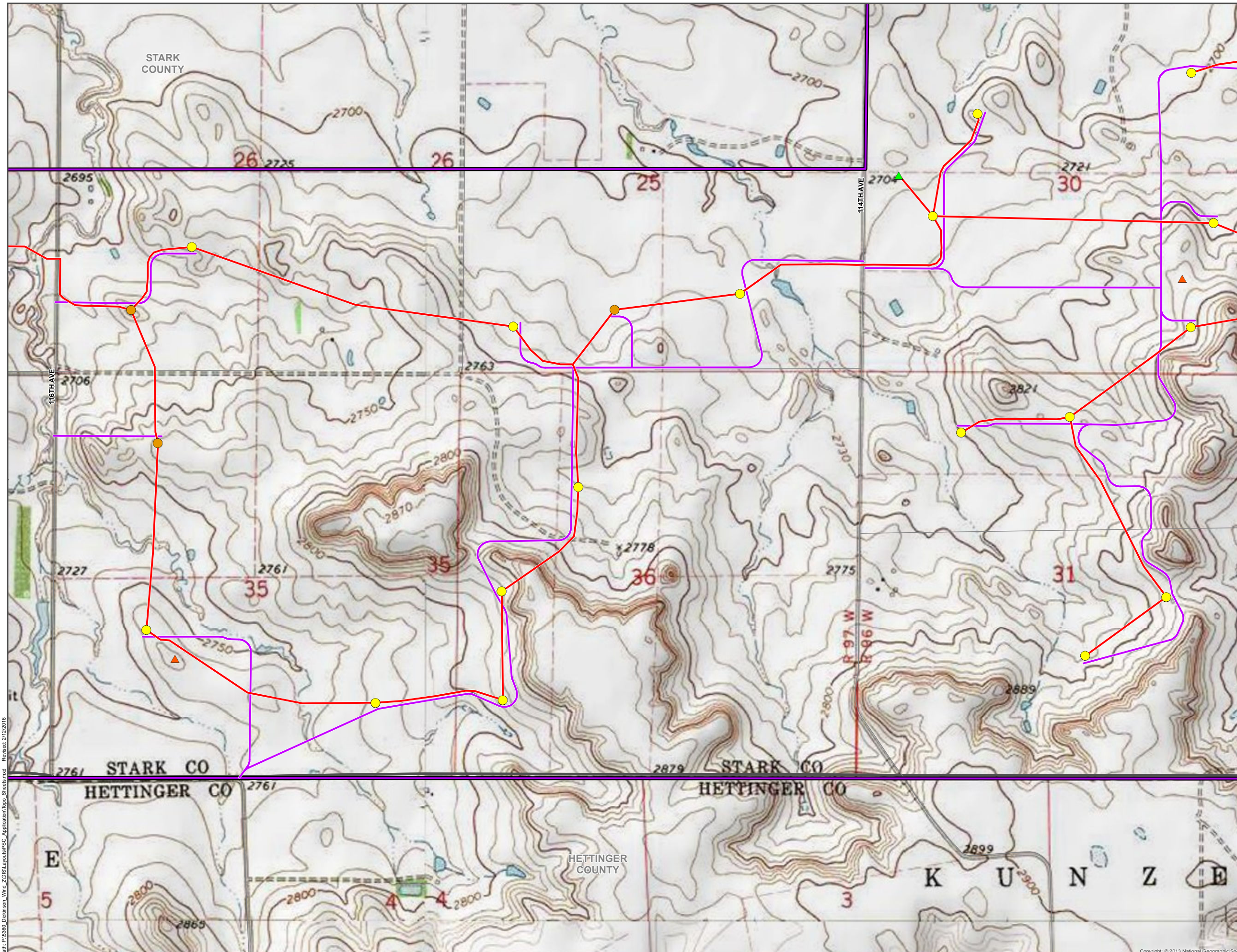
Brady Wind Energy Center

Stark County, ND

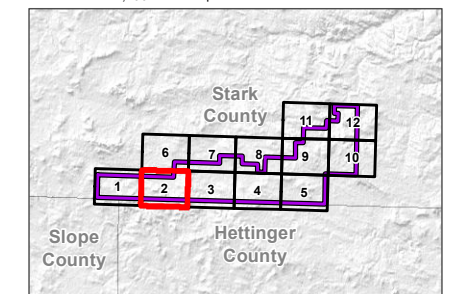
Legend

- Proposed Project Features**
- ▲ Permanent Met Tower
 - ▲ Temporary Met Tower
 - Proposed Turbine (10/30/15)
 - Alternative Turbine (10/30/15)
 - Collection System (10/30/15)
 - Service Roads (10/30/15)
 - ▭ Project Boundary (10/21/15)
 - ▨ Laydown
 - ▨ Temporary Turbine Storage Area
 - O&M Building
 - Substation

*USGS Topo



Scale is 1:7,200 when printed at 22 x 34



Copyright © 2013 National Geographic Society

Path: P:\550_Dickinson_Wind_2\GIS\Layouts\FSC_Application\Topo_Sheets.mxd Revised: 2/12/2016












Figure 3: Project Area (Topographical) - Sheet 2

Brady Wind Energy Center

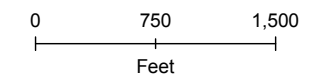
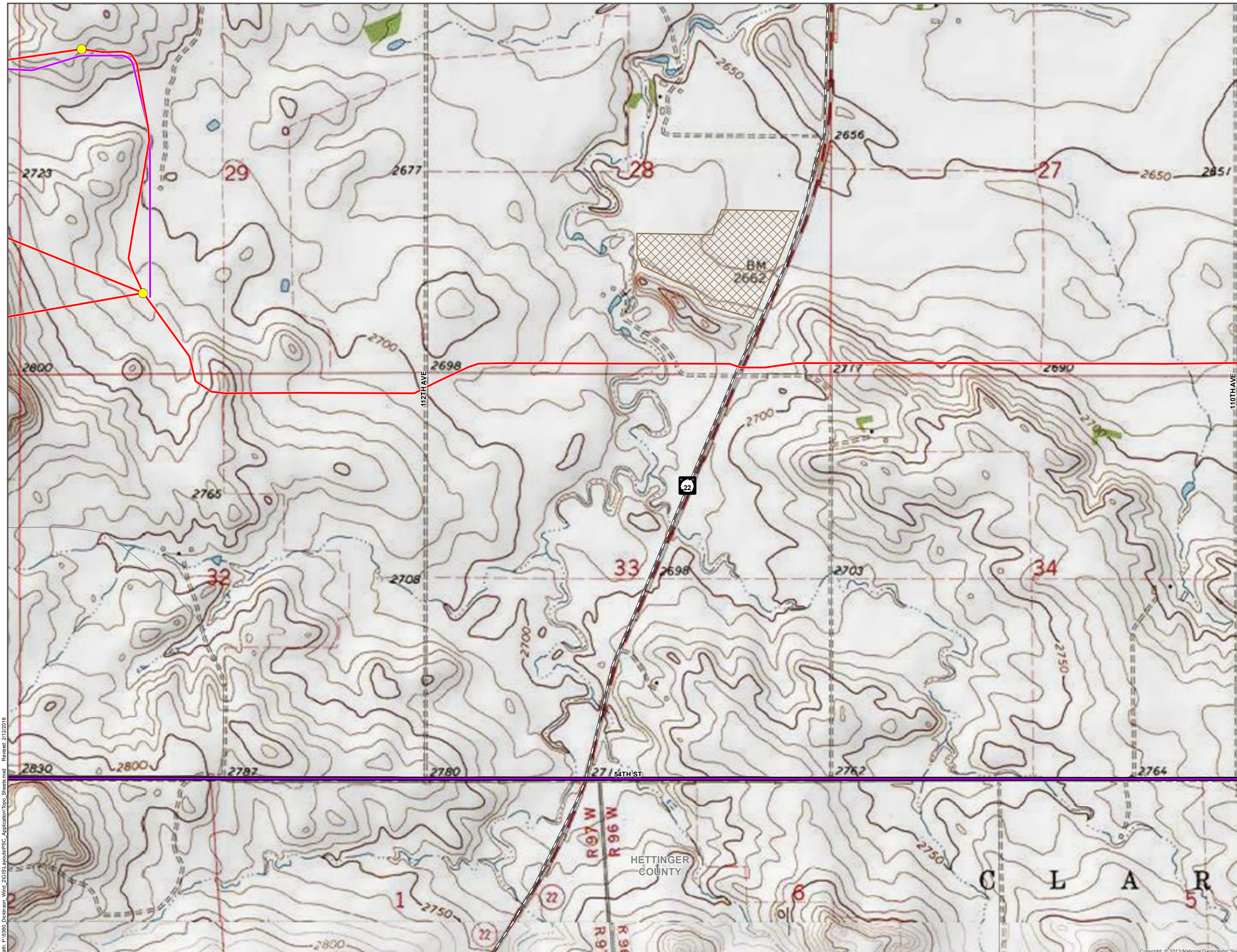
Stark County, ND

Legend

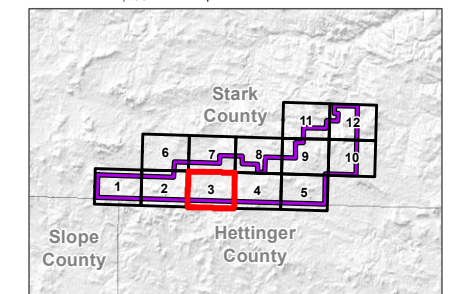
Proposed Project Features

-  Permanent Met Tower
-  Temporary Met Tower
-  Proposed Turbine (10/30/15)
-  Alternative Turbine (10/30/15)
-  Collection System (10/30/15)
-  Service Roads (10/30/15)
-  Project Boundary (10/21/15)
-  Laydown
-  Temporary Turbine Storage Area
-  O&M Building
-  Substation

*USGS Topo



Scale is 1:7,200 when printed at 22 x 34



Path: P:\6580_Dickinson_Wind_2\GIS\LAYOUTS\FSC_Application\Topo_Sheets.mxd Revised: 2/12/2016

Copyright © 2013 National Geographic Society

Figure 3: Project Area (Topographical) - Sheet 3

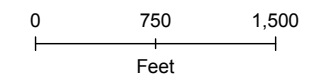
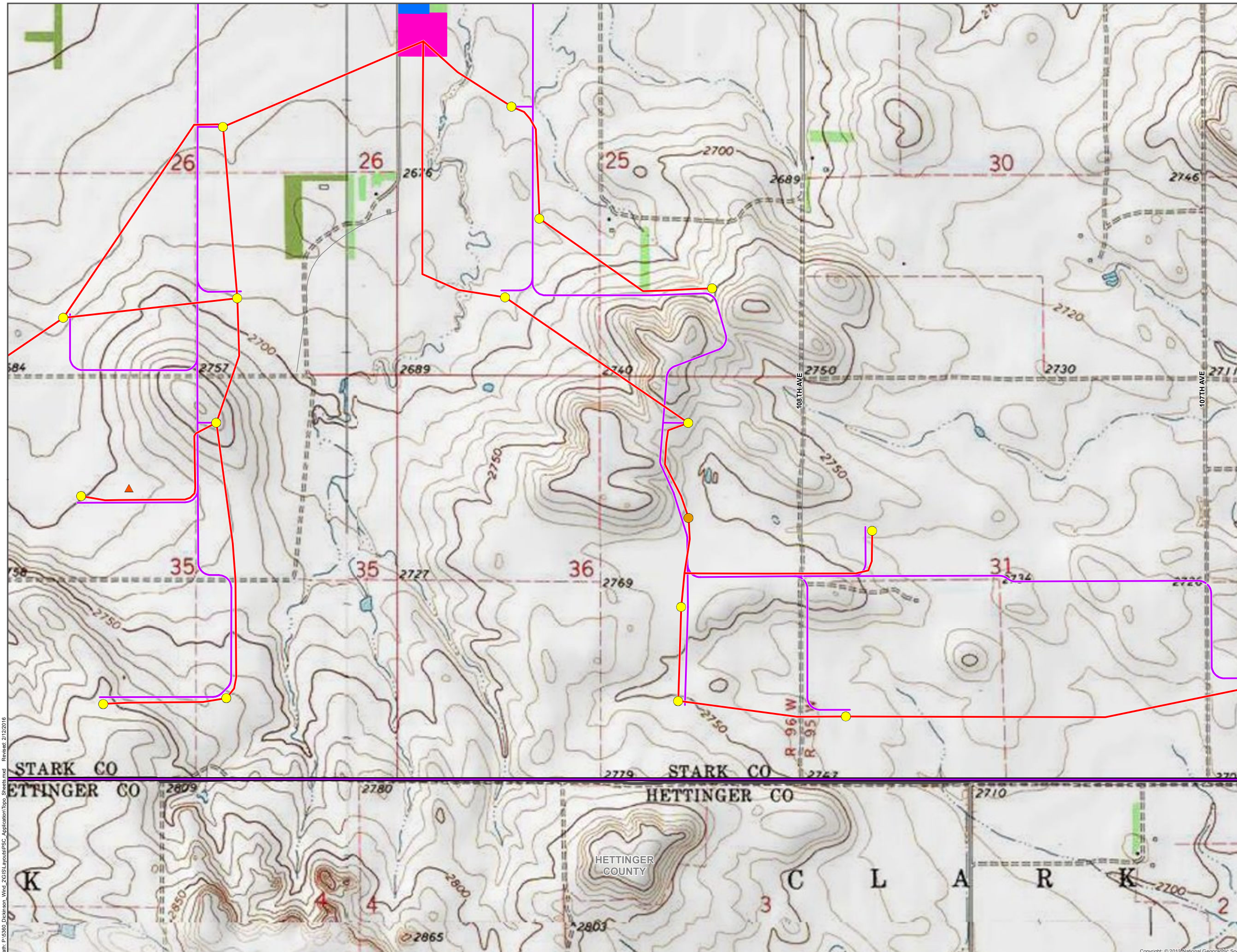
Brady Wind Energy Center

Stark County, ND

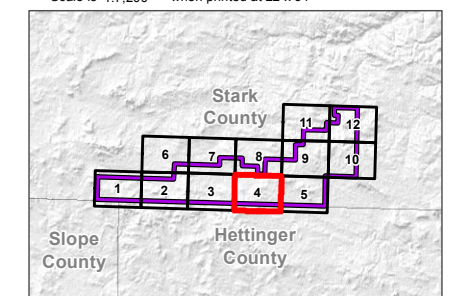
Legend

- Proposed Project Features**
- ▲ Permanent Met Tower
 - ▲ Temporary Met Tower
 - Proposed Turbine (10/30/15)
 - Alternative Turbine (10/30/15)
 - Collection System (10/30/15)
 - Service Roads (10/30/15)
 - ▭ Project Boundary (10/21/15)
 - ▨ Laydown
 - ▨ Temporary Turbine Storage Area
 - O&M Building
 - Substation

*USGS Topo



Scale is 1:7,200 when printed at 22 x 34



Path: P:\6580_Dickinson_Wind_2\GIS\Layouts\FSC_Application\Topo_Sheets.mxd - Revised: 2/12/2016

Copyright: © 2013 National Geographic Society

Figure 3: Project Area (Topographical) - Sheet 4

Brady Wind Energy Center

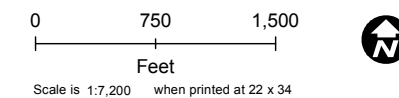
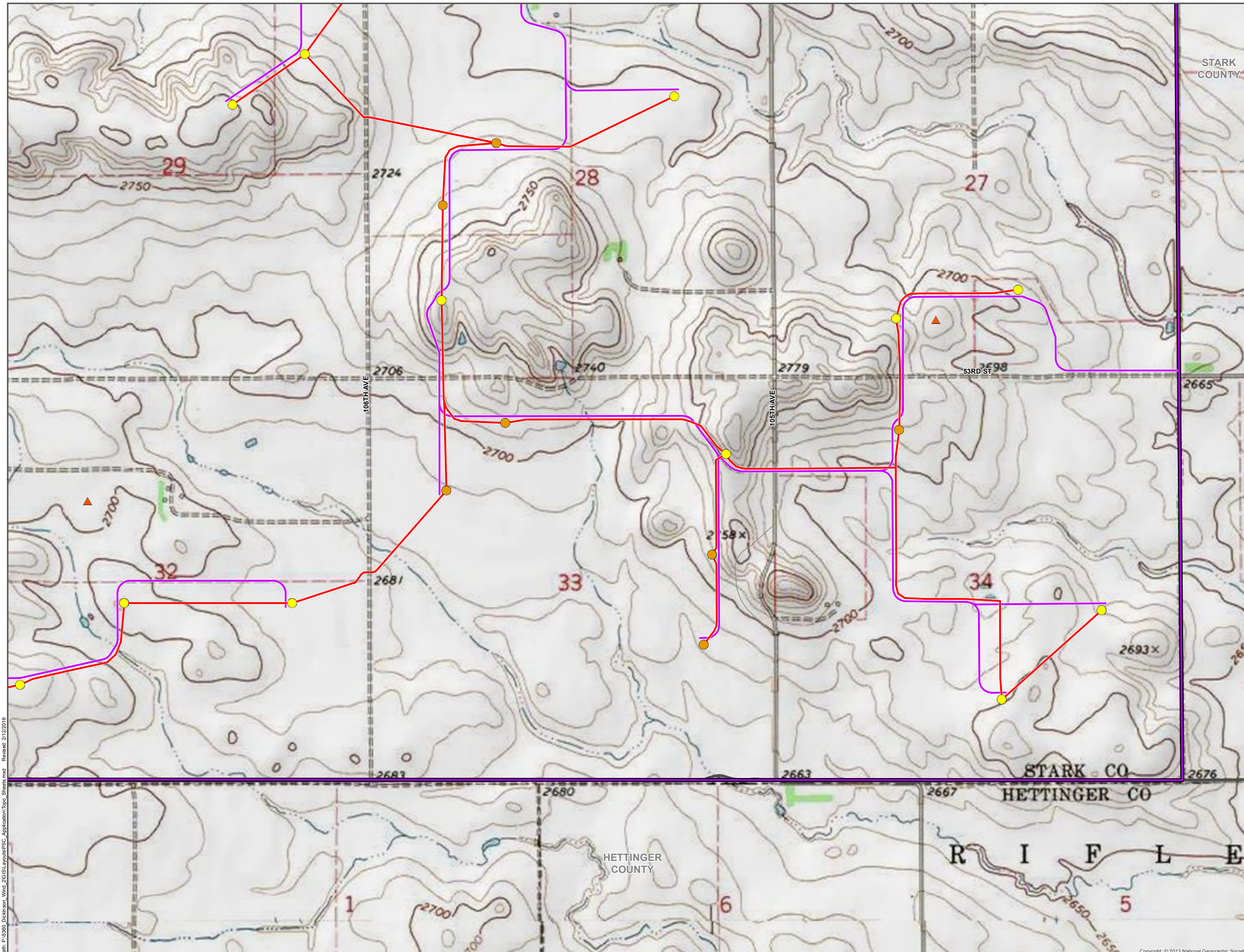
Stark County, ND

Legend

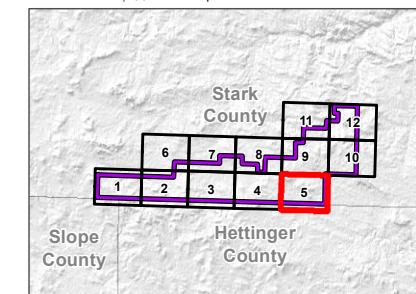
Proposed Project Features

- ▲ Permanent Met Tower
- ▲ Temporary Met Tower
- Proposed Turbine (10/30/15)
- Alternative Turbine (10/30/15)
- Collection System (10/30/15)
- Service Roads (10/30/15)
- ▭ Project Boundary (10/21/15)
- ▨ Laydown
- ▨ Temporary Turbine Storage Area
- O&M Building
- Substation

*USGS Topo



Scale is 1:7,200 when printed at 22 x 34



Copyright © 2013 National Geographic Society

Path: P:\6560_Dickinson_Wind_2\GIS\LAYOUTS\SC_Application\Topo_Sheets.mxd Revised: 2/12/2016

Figure 3: Project Area (Topographical) - Sheet 5

Brady Wind Energy Center

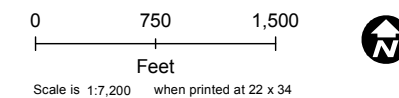
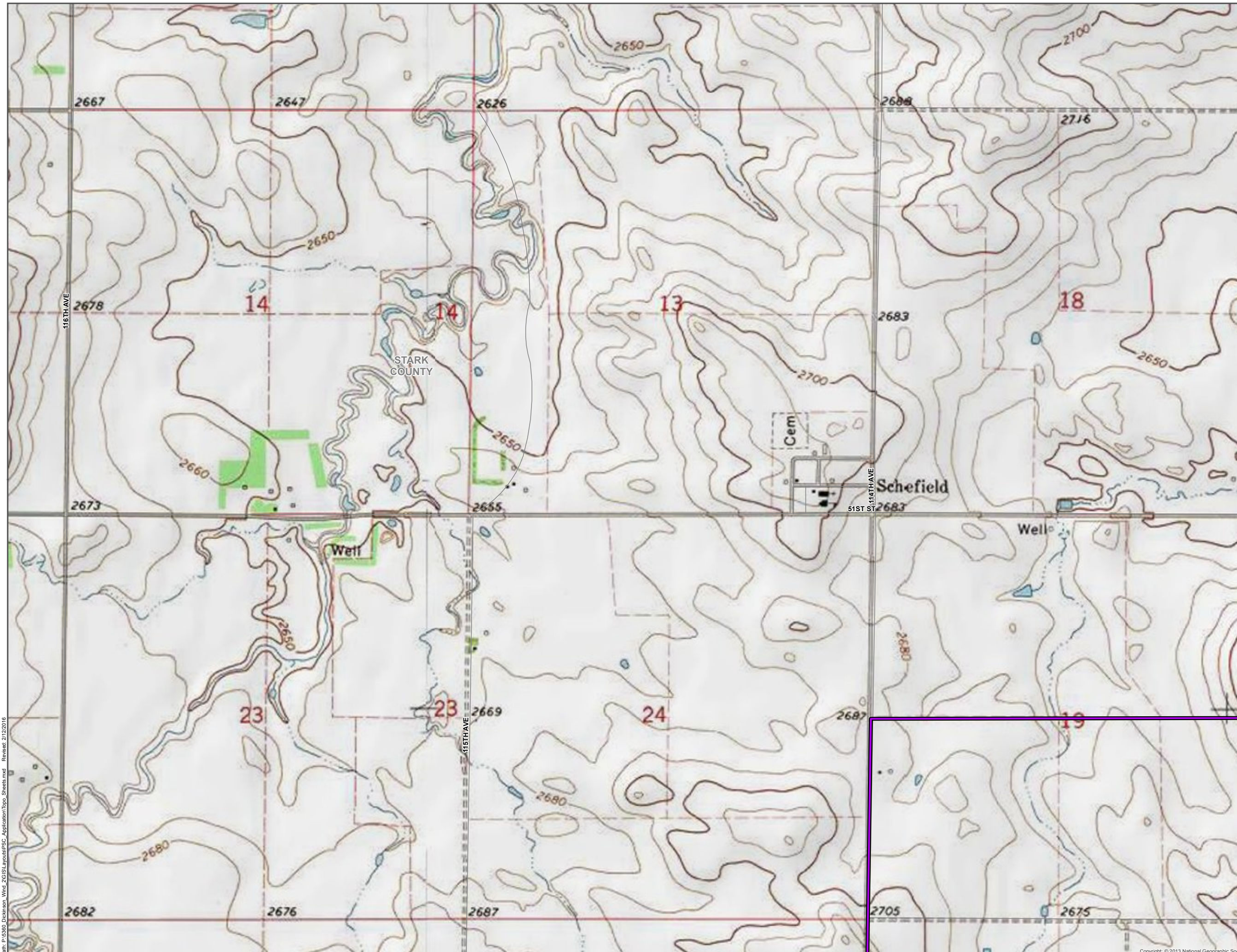
Stark County, ND

Legend

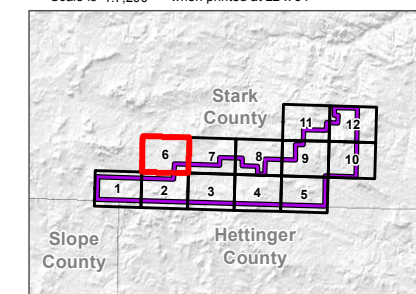
Proposed Project Features

- ▲ Permanent Met Tower
- ▲ Temporary Met Tower
- Proposed Turbine (10/30/15)
- Alternative Turbine (10/30/15)
- Collection System (10/30/15)
- Service Roads (10/30/15)
- Project Boundary (10/21/15)
- Laydown
- Temporary Turbine Storage Area
- O&M Building
- Substation

*USGS Topo



Scale is 1:7,200 when printed at 22 x 34



Copyright: © 2013 National Geographic Society

Path: P:\6580_Dickinson_Wind_2015/Layouts\FSC_Application\Topo_Sheets.mxd - Revised: 2/12/2016

Figure 3: Project Area (Topographical) - Sheet 6

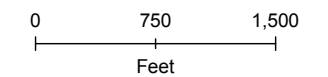
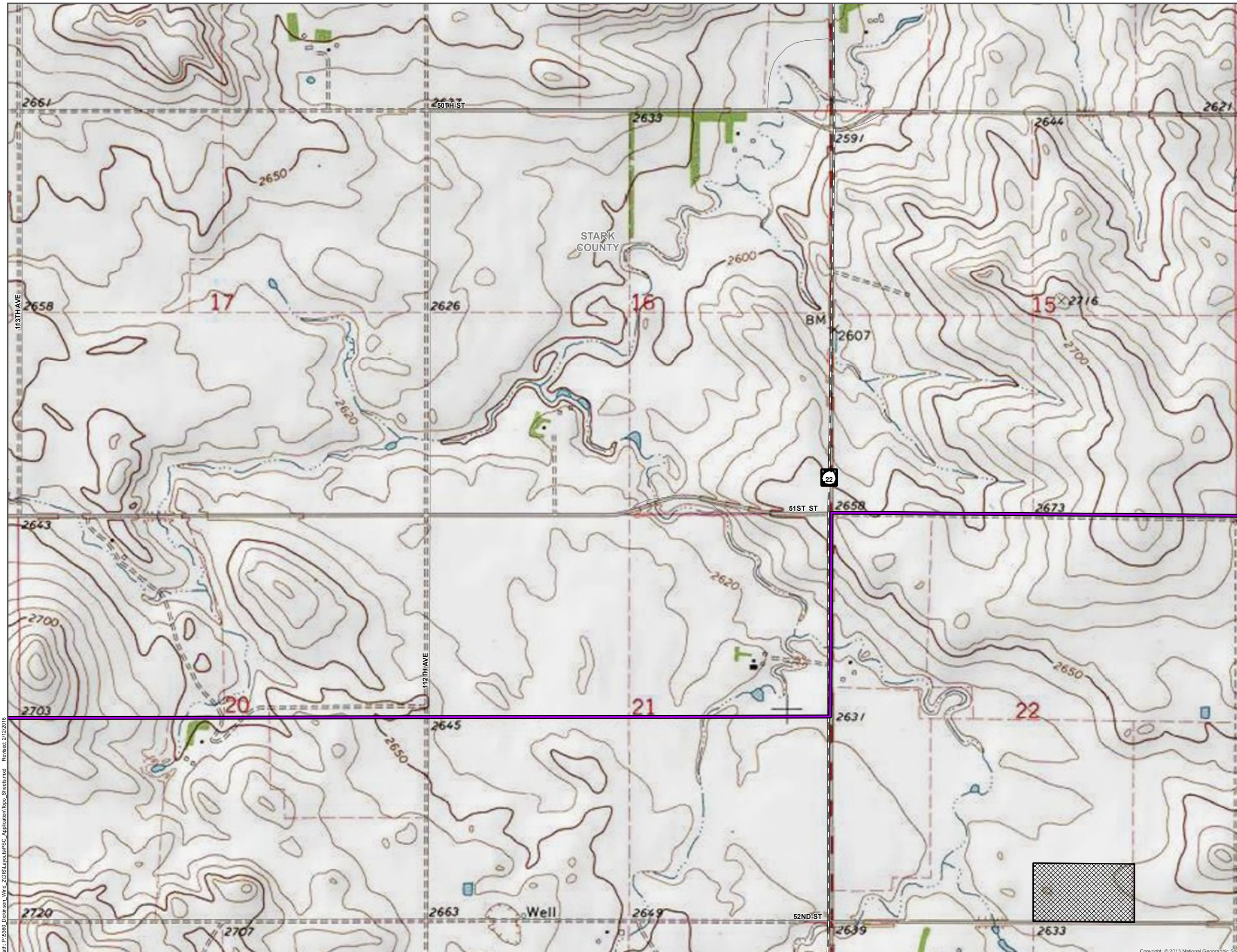
Brady Wind Energy Center

Stark County, ND

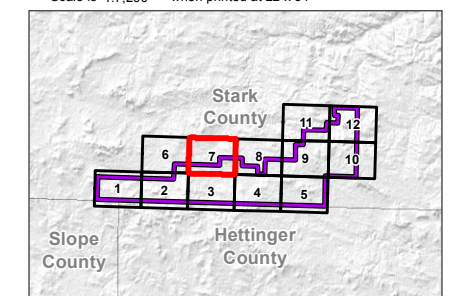
Legend

- Proposed Project Features**
- ▲ Permanent Met Tower
 - ▲ Temporary Met Tower
 - Proposed Turbine (10/30/15)
 - Alternative Turbine (10/30/15)
 - Collection System (10/30/15)
 - Service Roads (10/30/15)
 - ▭ Project Boundary (10/21/15)
 - ▨ Laydown
 - ▨ Temporary Turbine Storage Area
 - O&M Building
 - Substation

*USGS Topo



Scale is 1:7,200 when printed at 22 x 34



Copyright © 2013 National Geographic Society

Path: P:\6580_Dickinson_Wind_2\GIS\LAYOUTS\SC_Application\Topo_Sheets.mxd Revised: 2/12/2016

Figure 3: Project Area (Topographical) - Sheet 7

Brady Wind Energy Center

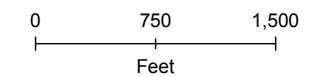
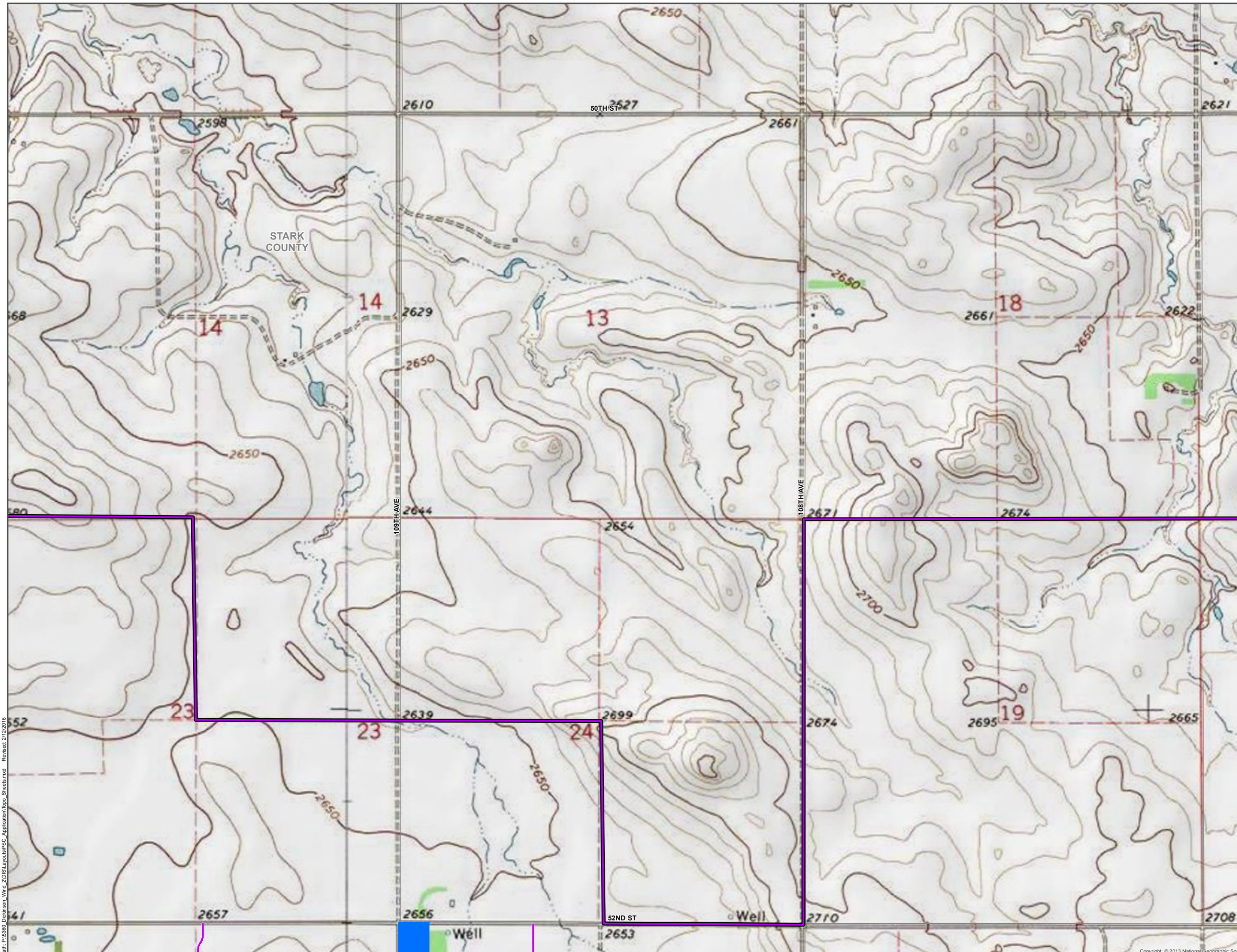
Stark County, ND

Legend

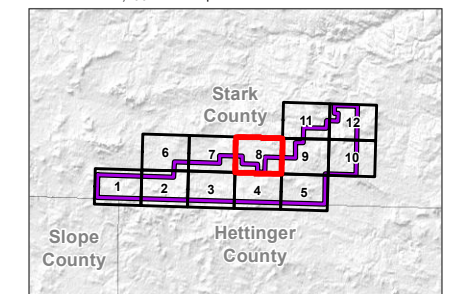
Proposed Project Features

- ▲ Permanent Met Tower
- ▲ Temporary Met Tower
- Proposed Turbine (10/30/15)
- Alternative Turbine (10/30/15)
- Collection System (10/30/15)
- Service Roads (10/30/15)
- Project Boundary (10/21/15)
- Laydown
- Temporary Turbine Storage Area
- O&M Building
- Substation

*USGS Topo



Scale is 1:7,200 when printed at 22 x 34



Copyright © 2013 National Geographic Society

Path: P:\6580_Dickinson_Wind_2\GIS\LAYOUTS\95C_Application\Topo_Sheets.mxd - Revised: 2/12/2016

Figure 3: Project Area (Topographical) - Sheet 8

Brady Wind Energy Center

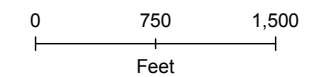
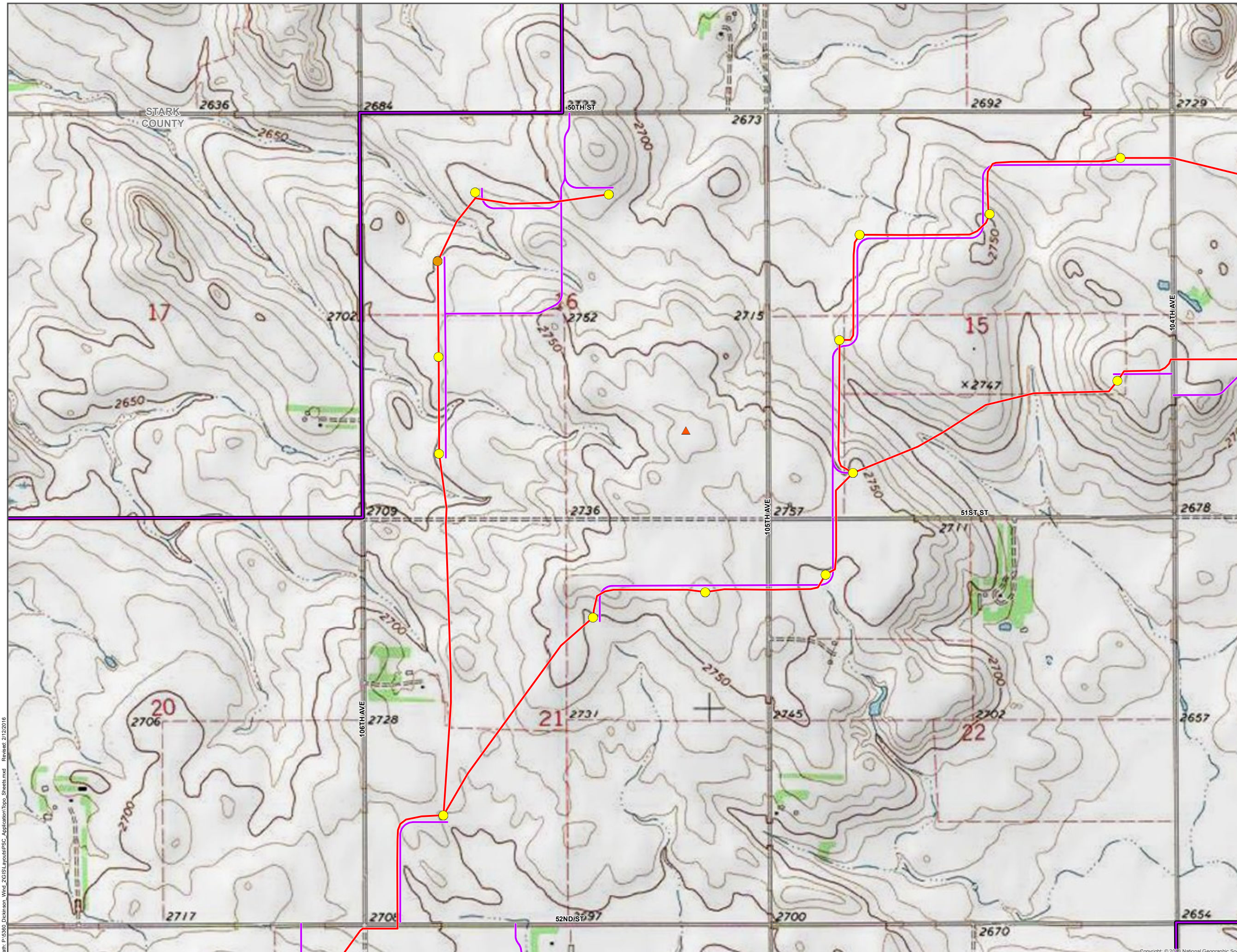
Stark County, ND

Legend

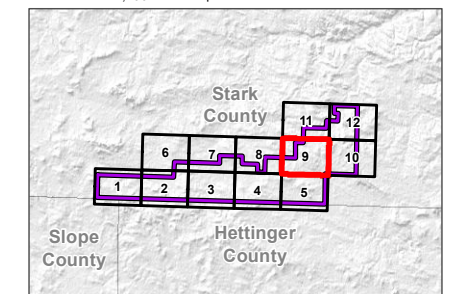
Proposed Project Features

- ▲ Permanent Met Tower
- ▲ Temporary Met Tower
- Proposed Turbine (10/30/15)
- Alternative Turbine (10/30/15)
- Collection System (10/30/15)
- Service Roads (10/30/15)
- Project Boundary (10/21/15)
- Laydown
- Temporary Turbine Storage Area
- O&M Building
- Substation

*USGS Topo



Scale is 1:7,200 when printed at 22 x 34



Path: P:\6580_Dickinson_Wind_2015\Layouts\FSC_Application\Topo_Sheets.mxd - Revised: 2/12/2016

Copyright © 2013 National Geographic Society

Figure 3: Project Area (Topographical) - Sheet 9

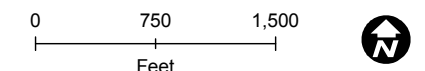
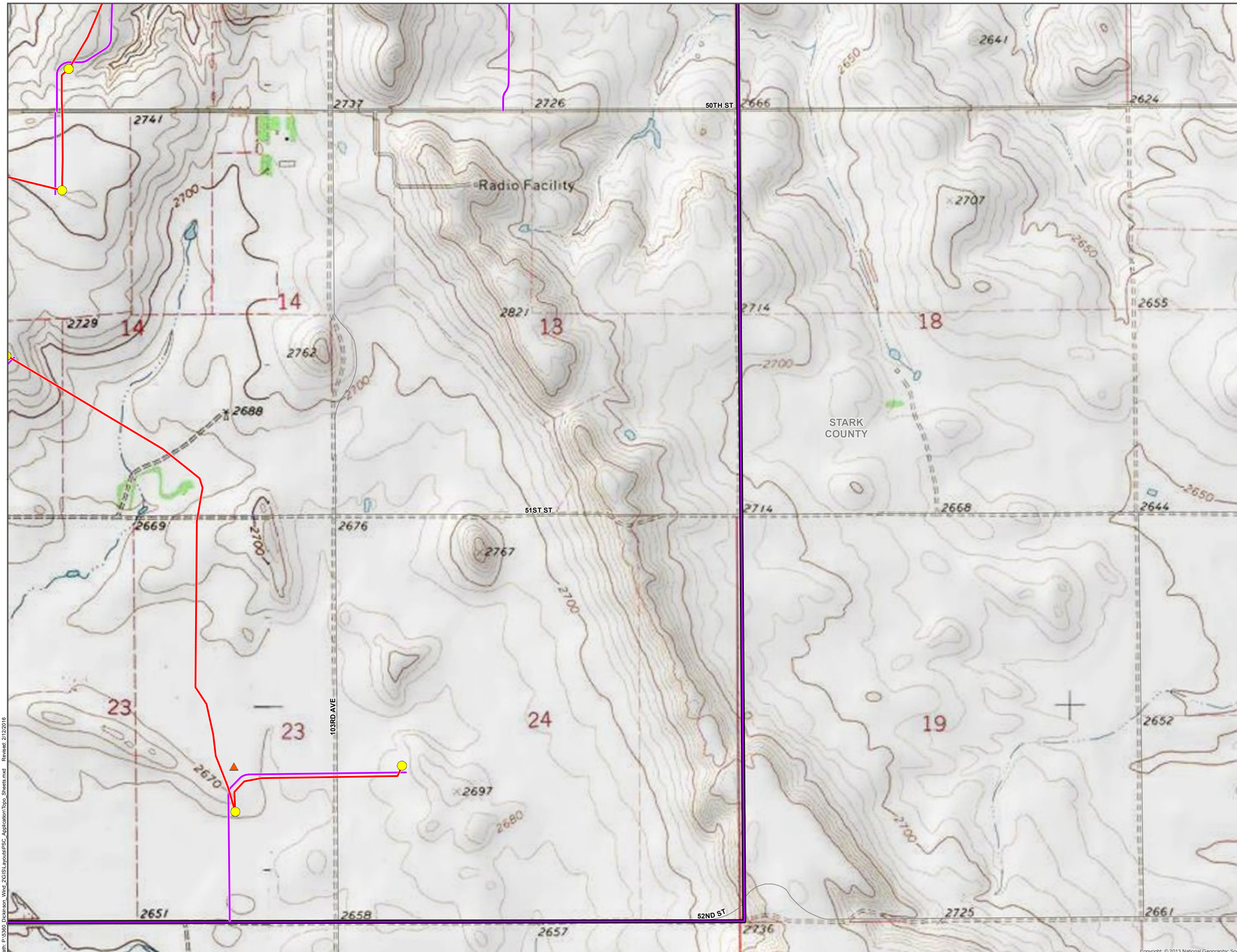
Brady Wind Energy Center

Stark County, ND

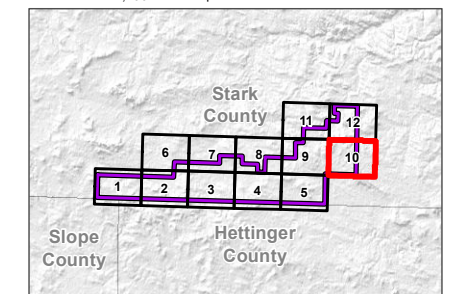
Legend

- Proposed Project Features**
- ▲ Permanent Met Tower
 - ▲ Temporary Met Tower
 - Proposed Turbine (10/30/15)
 - Alternative Turbine (10/30/15)
 - Collection System (10/30/15)
 - Service Roads (10/30/15)
 - Project Boundary (10/21/15)
 - Laydown
 - Temporary Turbine Storage Area
 - O&M Building
 - Substation

*USGS Topo



Scale is 1:7,200 when printed at 22 x 34



Path: P:\6580_Dickinson_Wind_2\GIS\Layouts\FSC_Application\Topo_Sheets.mxd - Revised: 2/12/2016

Copyright: © 2013 National Geographic Society

Figure 3: Project Area (Topographical) - Sheet 10

Brady Wind Energy Center

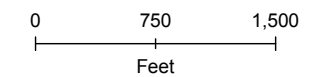
Stark County, ND

Legend

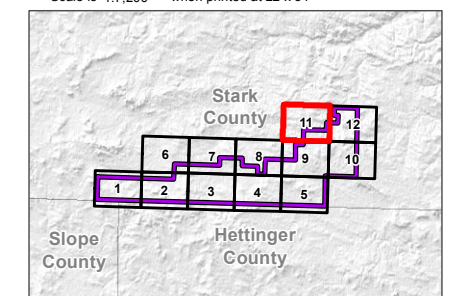
Proposed Project Features

- ▲ Permanent Met Tower
- ▲ Temporary Met Tower
- Proposed Turbine (10/30/15)
- Alternative Turbine (10/30/15)
- Collection System (10/30/15)
- Service Roads (10/30/15)
- Project Boundary (10/21/15)
- Laydown
- Temporary Turbine Storage Area
- O&M Building
- Substation

*USGS Topo



Scale is 1:7,200 when printed at 22 x 34



Copyright © 2013 National Geographic Society

Path: P:\6580_Dickinson_Wind_2G16\LAYOUTS\SC_Application\Topo_Sheets.mxd - Revised: 2/12/2016

Figure 3: Project Area (Topographical) - Sheet 11

Brady Wind Energy Center

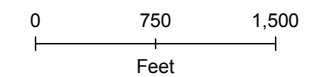
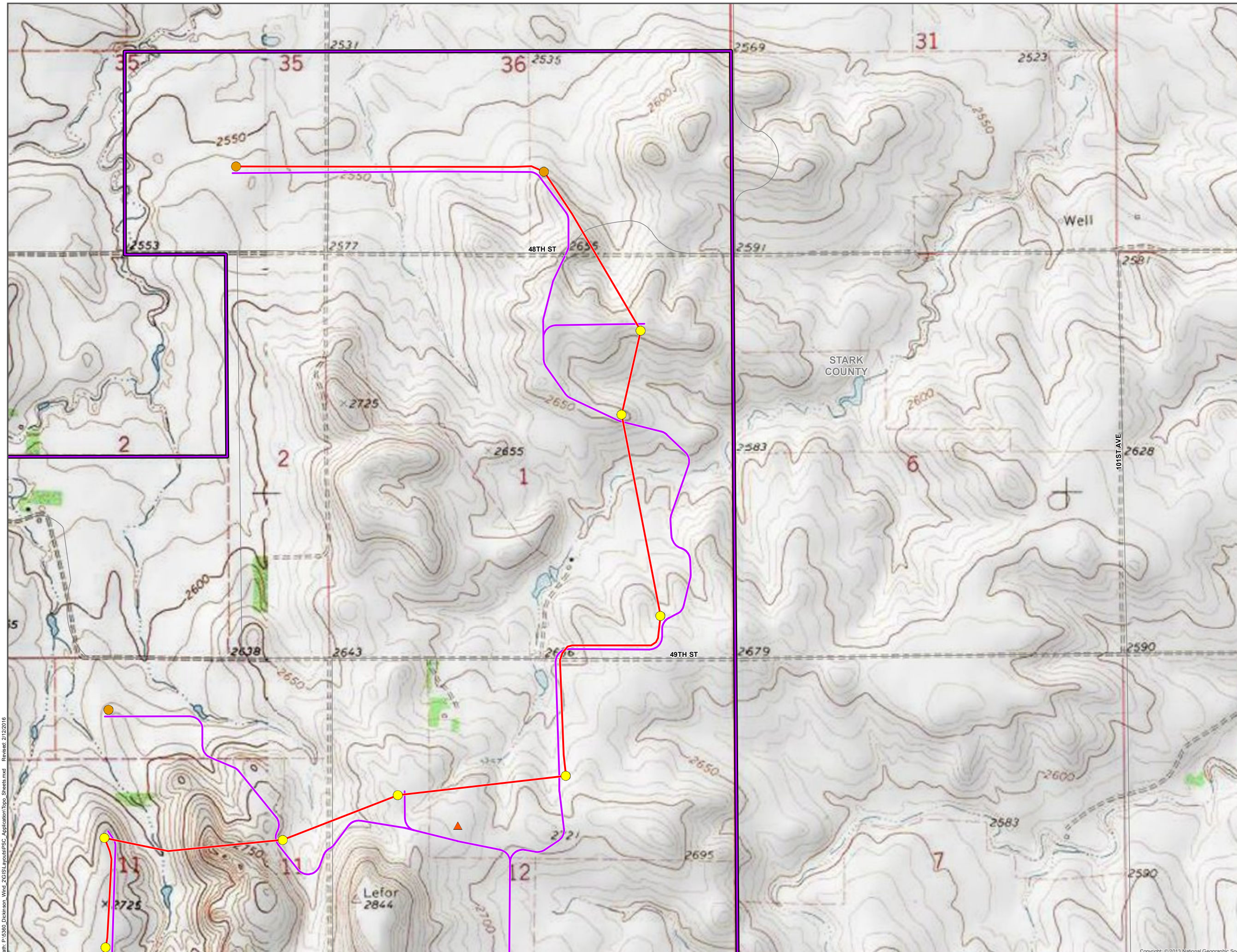
Stark County, ND

Legend

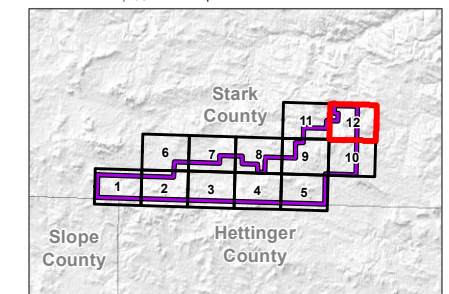
Proposed Project Features

- ▲ Permanent Met Tower
- ▲ Temporary Met Tower
- Proposed Turbine (10/30/15)
- Alternative Turbine (10/30/15)
- Collection System (10/30/15)
- Service Roads (10/30/15)
- Project Boundary (10/21/15)
- Laydown
- Temporary Turbine Storage Area
- O&M Building
- Substation

*USGS Topo



Scale is 1:7,200 when printed at 22 x 34



Copyright © 2013 National Geographic Society

Path: P:\6580_Dickinson_Wind_2\GIS\LAYOUTS\SC_Application\Topo_Sheets.mxd Revised: 2/12/2016

Figure 3: Project Area (Topographical) - Sheet 12