

NEXTERA ENERGY
 RESOURCES, LLC
 BRADY WIND PROJECT
 STARK COUNTY
 NORTH DAKOTA

FIGURE 2
 SHEET 1
 EXPECTED SHADOW FLICKER
 IMPACT AREAS (SCENARIO A –
 PRIMARY TURBINES ONLY)

JANUARY 2016

Proposed Turbine Array (11/6/2015)

- GE Xle 1.715-103 Turbine
- GE Xle 1.79-100 Turbine

Shadow Flicker (hours per year)

- 0 - 15
- >15 - 30
- >30 - 50
- >50 - 100
- >100 - 200
- >200

□ 30 hours per year limit

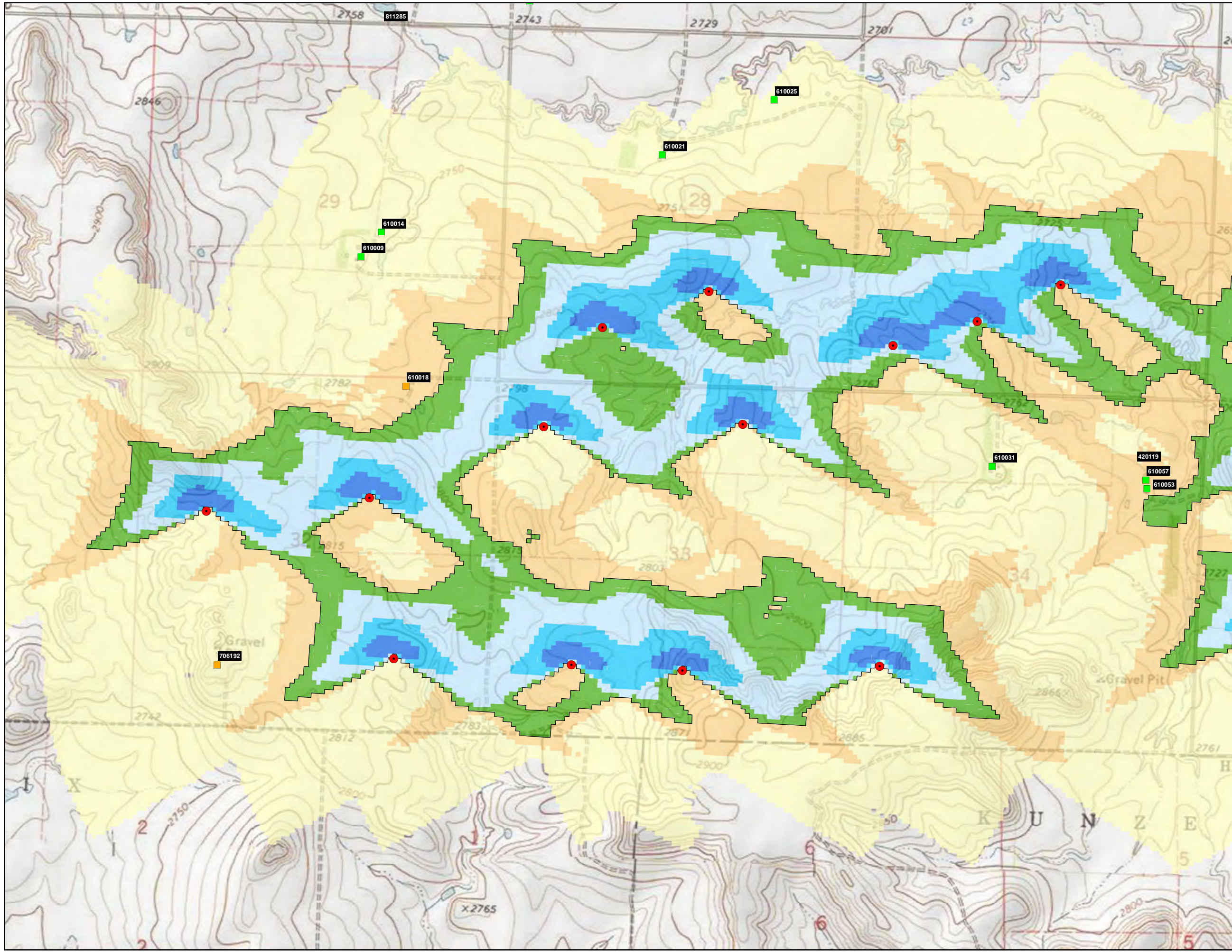
Receptors

- Occupied
- Unoccupied

0 500 1,000 1,500 2,000 FEET

N

REFERENCE MAP



NEXTERA ENERGY
 RESOURCES, LLC
 BRADY WIND PROJECT
 STARK COUNTY
 NORTH DAKOTA

FIGURE 2
 SHEET 2
 EXPECTED SHADOW FLICKER
 IMPACT AREAS (SCENARIO A –
 PRIMARY TURBINES ONLY)

JANUARY 2016

Proposed Turbine Array (11/6/2015)

- GE Xle 1.715-103 Turbine
- GE Xle 1.79-100 Turbine

Shadow Flicker (hours per year)

- 0 - 15
- >15 - 30
- >30 - 50
- >50 - 100
- >100 - 200
- >200

□ 30 hours per year limit

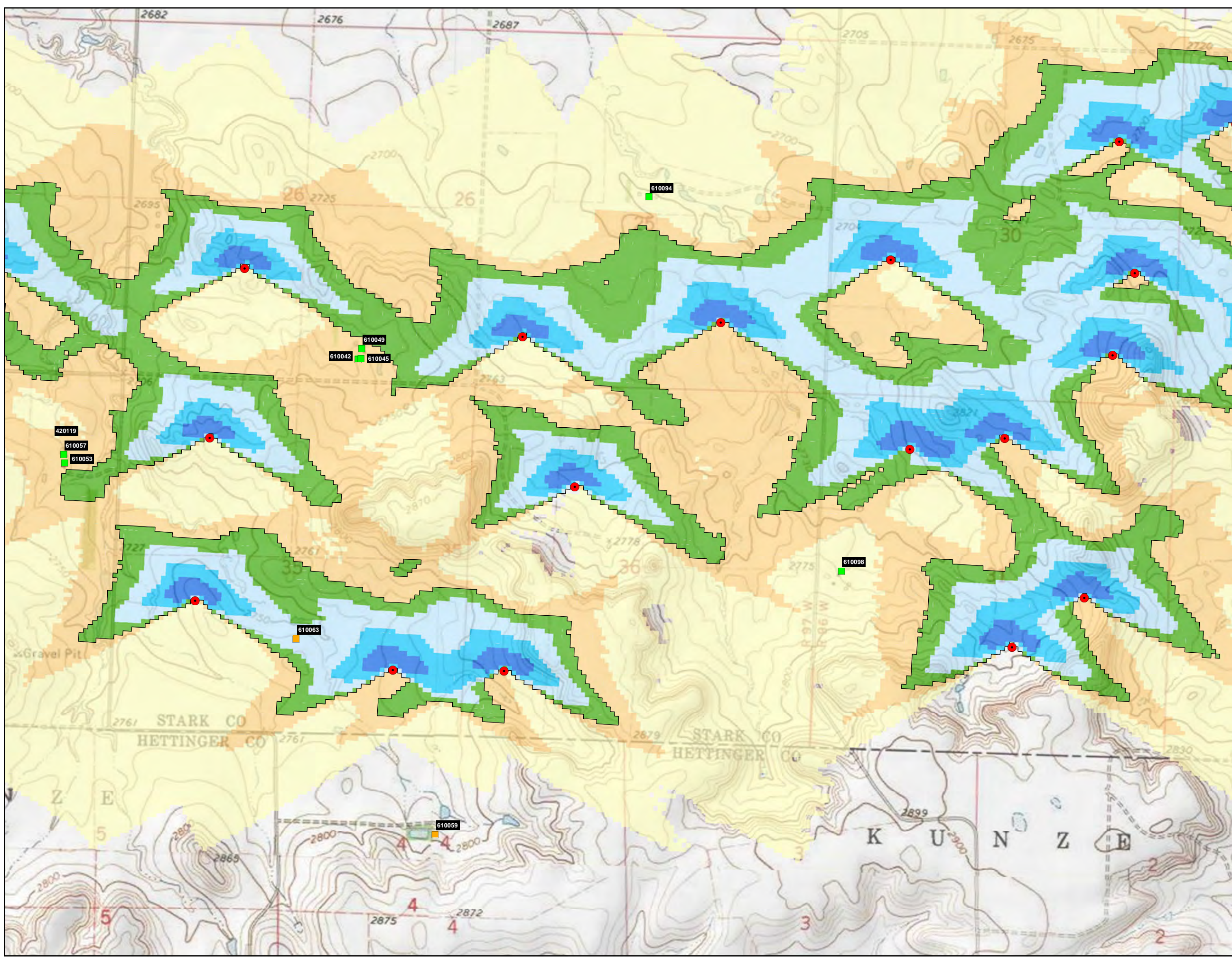
Receptors

- Occupied
- Unoccupied

0 500 1,000 1,500 2,000 FEET



REFERENCE MAP



NEXTERA ENERGY
 RESOURCES, LLC
 BRADY WIND PROJECT
 STARK COUNTY
 NORTH DAKOTA

FIGURE 2
 SHEET 3
 EXPECTED SHADOW FLICKER
 IMPACT AREAS (SCENARIO A –
 PRIMARY TURBINES ONLY)

JANUARY 2016

Proposed Turbine Array (11/6/2015)

- GE Xle 1.715-103 Turbine
- GE Xle 1.79-100 Turbine

Shadow Flicker (hours per year)

- 0 - 15
- >15 - 30
- >30 - 50
- >50 - 100
- >100 - 200
- >200

□ 30 hours per year limit

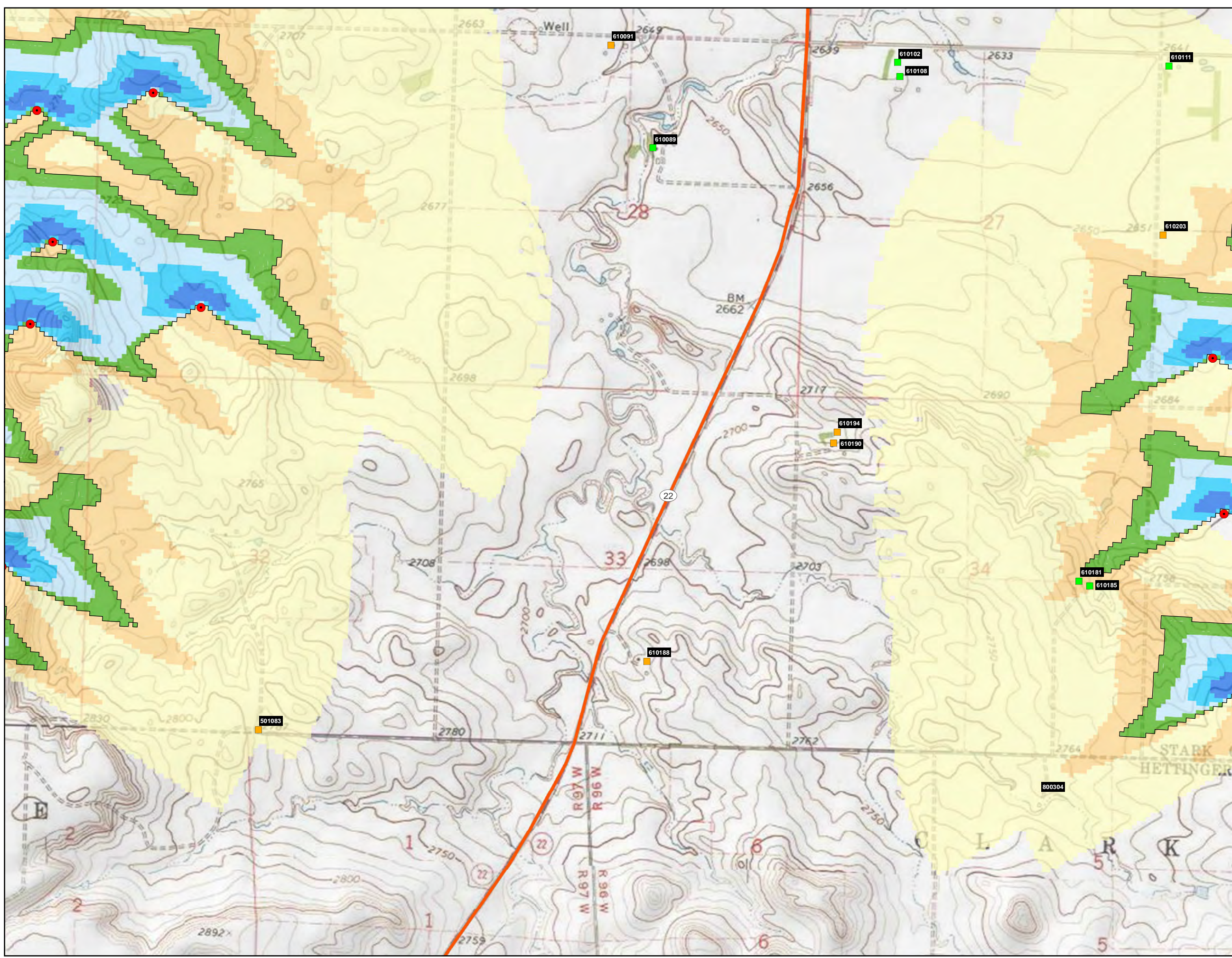
Receptors

- Occupied
- Unoccupied

0 500 1,000 1,500 2,000 FEET



REFERENCE MAP



NEXTERA ENERGY
RESOURCES, LLC
BRADY WIND PROJECT
STARK COUNTY
NORTH DAKOTA

FIGURE 2
SHEET 4
EXPECTED SHADOW FLICKER
IMPACT AREAS (SCENARIO A –
PRIMARY TURBINES ONLY)

JANUARY 2016

Proposed Turbine Array (11/6/2015)

- GE Xle 1.715-103 Turbine
- GE Xle 1.79-100 Turbine

Shadow Flicker (hours per year)

- 0 - 15
- >15 - 30
- >30 - 50
- >50 - 100
- >100 - 200
- >200

□ 30 hours per year limit

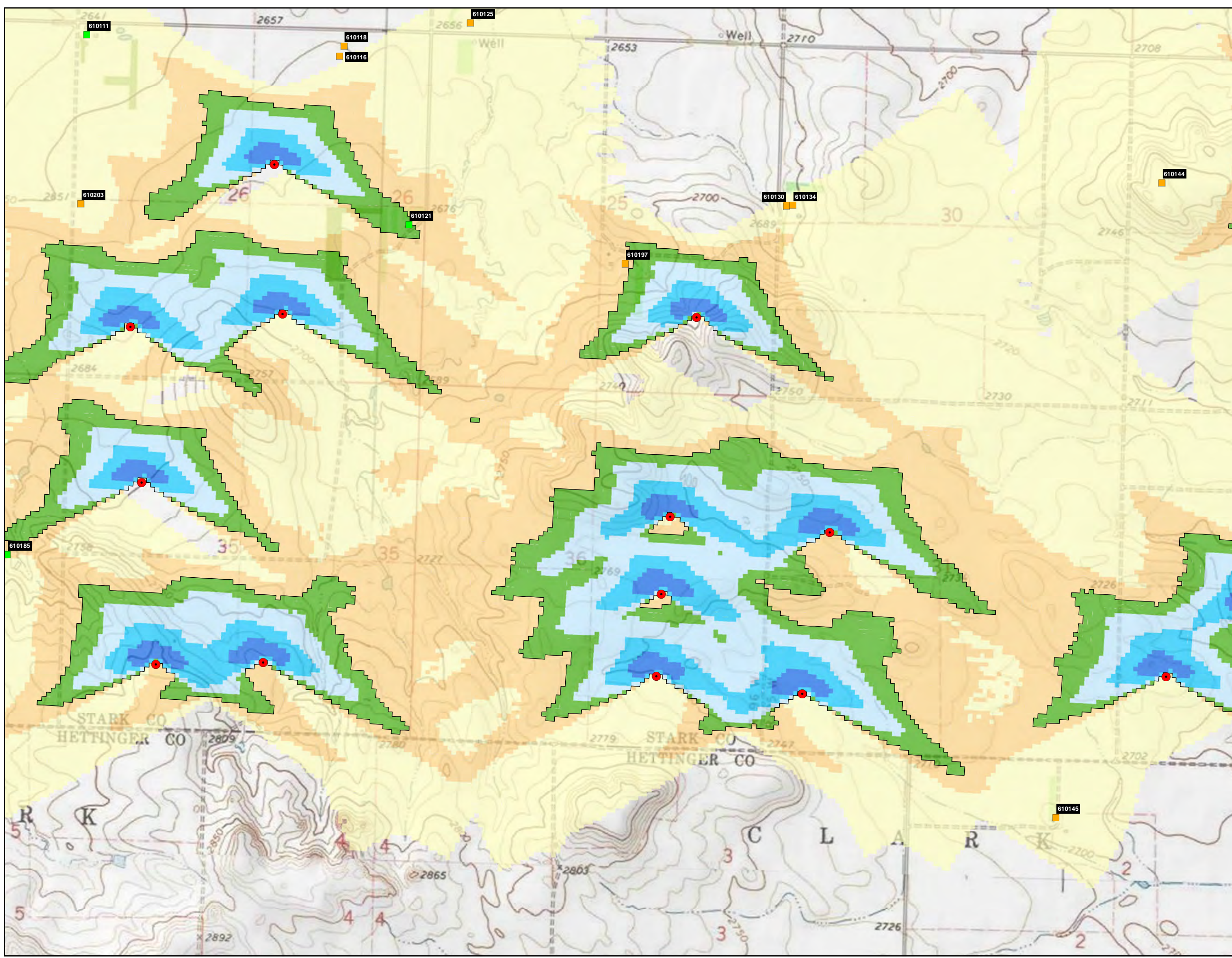
Receptors

- Occupied
- Unoccupied

0 500 1,000 1,500 2,000 FEET

N

REFERENCE MAP



NEXTERA ENERGY
 RESOURCES, LLC
 BRADY WIND PROJECT
 STARK COUNTY
 NORTH DAKOTA

FIGURE 2
 SHEET 5
 EXPECTED SHADOW FLICKER
 IMPACT AREAS (SCENARIO A –
 PRIMARY TURBINES ONLY)

JANUARY 2016

Proposed Turbine Array (11/6/2015)

- GE Xle 1.715-103 Turbine
- GE Xle 1.79-100 Turbine

Shadow Flicker (hours per year)

- 0 - 15
- >15 - 30
- >30 - 50
- >50 - 100
- >100 - 200
- >200

□ 30 hours per year limit

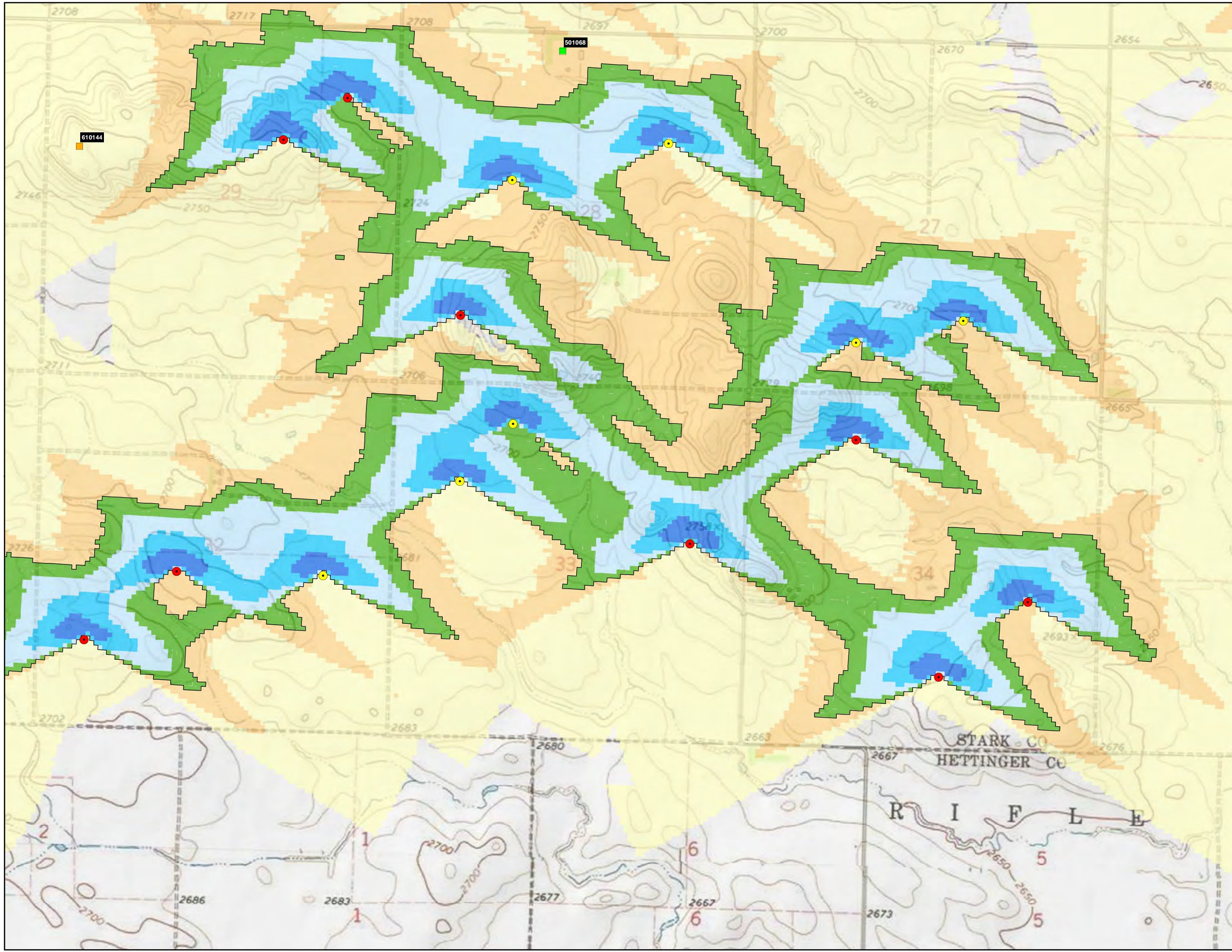
Receptors

- Occupied
- Unoccupied

0 500 1,000 1,500 2,000 FEET

N

REFERENCE MAP



NEXTERA ENERGY
RESOURCES, LLC
BRADY WIND PROJECT
STARK COUNTY
NORTH DAKOTA

FIGURE 2
SHEET 6
EXPECTED SHADOW FLICKER
IMPACT AREAS (SCENARIO A –
PRIMARY TURBINES ONLY)

JANUARY 2016

Proposed Turbine Array (11/6/2015)

- GE Xle 1.715-103 Turbine
- GE Xle 1.79-100 Turbine

Shadow Flicker (hours per year)

- 0 - 15
- >15 - 30
- >30 - 50
- >50 - 100
- >100 - 200
- >200
- 30 hours per year limit

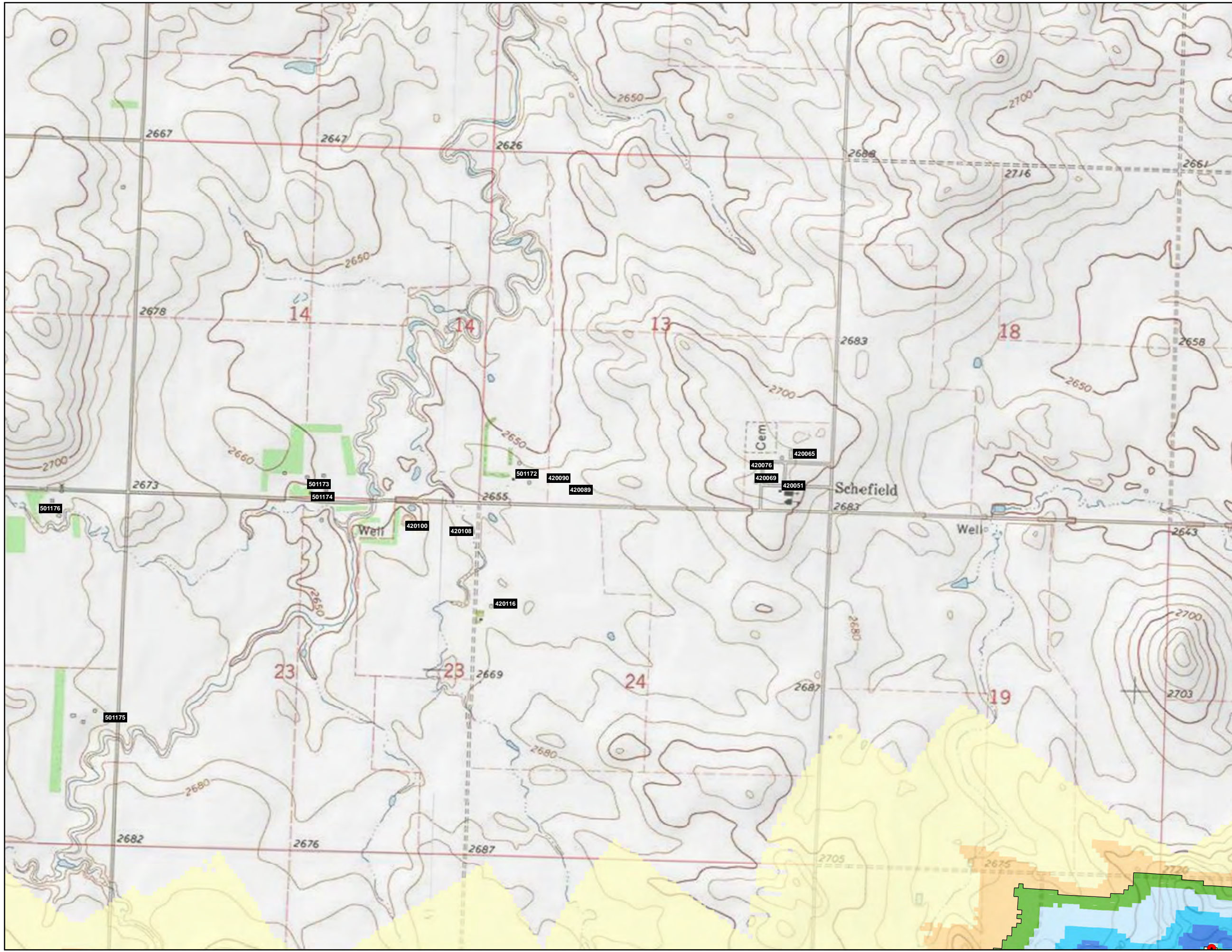
Receptors

- Occupied
- Unoccupied

0 500 1,000 1,500 2,000 FEET

N

REFERENCE MAP



NEXTERA ENERGY
RESOURCES, LLC
BRADY WIND PROJECT
STARK COUNTY
NORTH DAKOTA

FIGURE 2
SHEET 7
EXPECTED SHADOW FLICKER
IMPACT AREAS (SCENARIO A –
PRIMARY TURBINES ONLY)

JANUARY 2016

Proposed Turbine Array (11/6/2015)

- GE Xle 1.715-103 Turbine
- GE Xle 1.79-100 Turbine

Shadow Flicker (hours per year)

- 0 - 15
- >15 - 30
- >30 - 50
- >50 - 100
- >100 - 200
- >200
- 30 hours per year limit

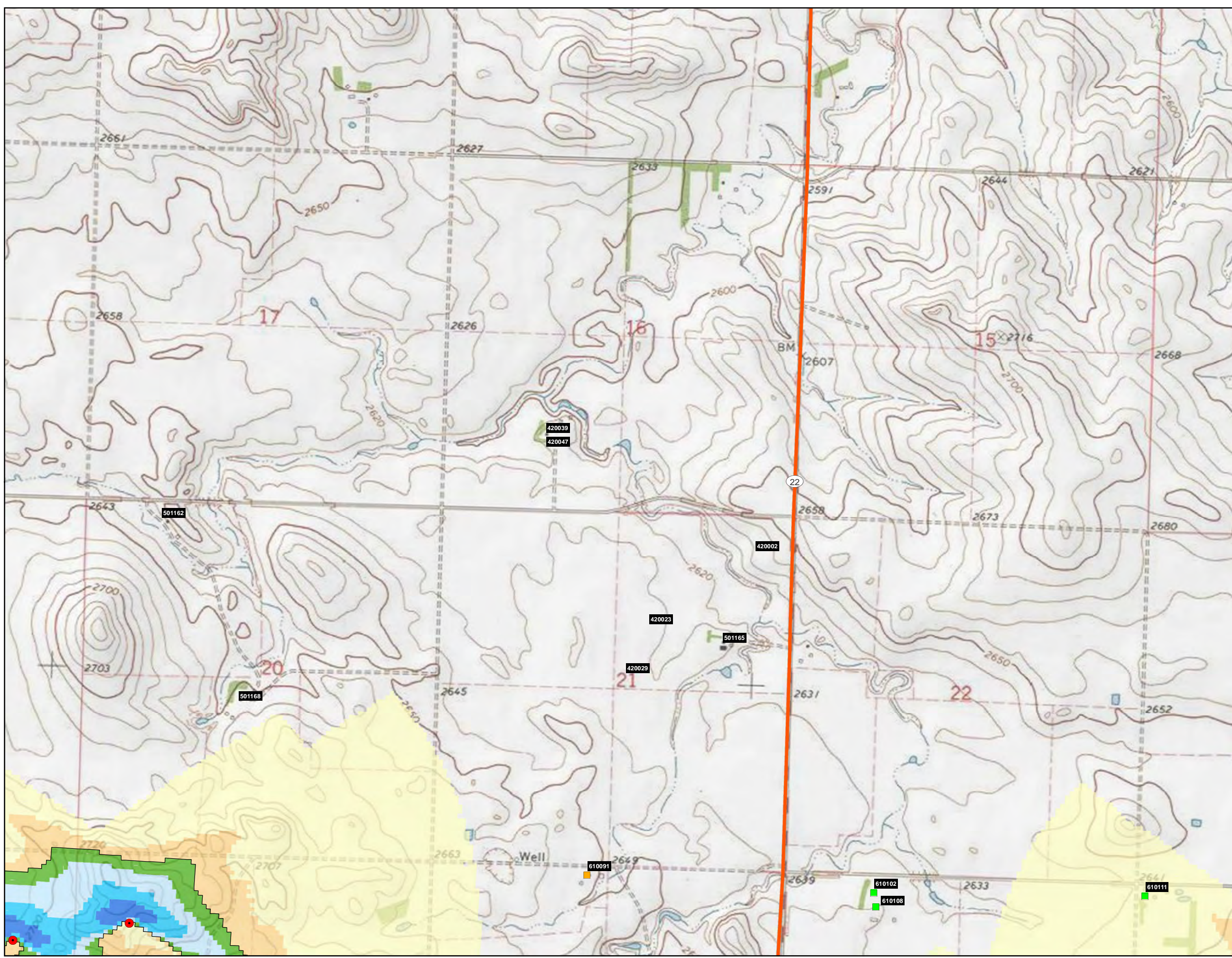
Receptors

- Occupied
- Unoccupied

0 500 1,000 1,500 2,000 FEET

N

REFERENCE MAP



NEXTERA ENERGY
 RESOURCES, LLC
 BRADY WIND PROJECT
 STARK COUNTY
 NORTH DAKOTA

FIGURE 2
 SHEET 8
 EXPECTED SHADOW FLICKER
 IMPACT AREAS (SCENARIO A –
 PRIMARY TURBINES ONLY)

JANUARY 2016

Proposed Turbine Array (11/6/2015)

- GE Xle 1.715-103 Turbine
- GE Xle 1.79-100 Turbine

Shadow Flicker (hours per year)

- 0 - 15
- >15 - 30
- >30 - 50
- >50 - 100
- >100 - 200
- >200
- 30 hours per year limit

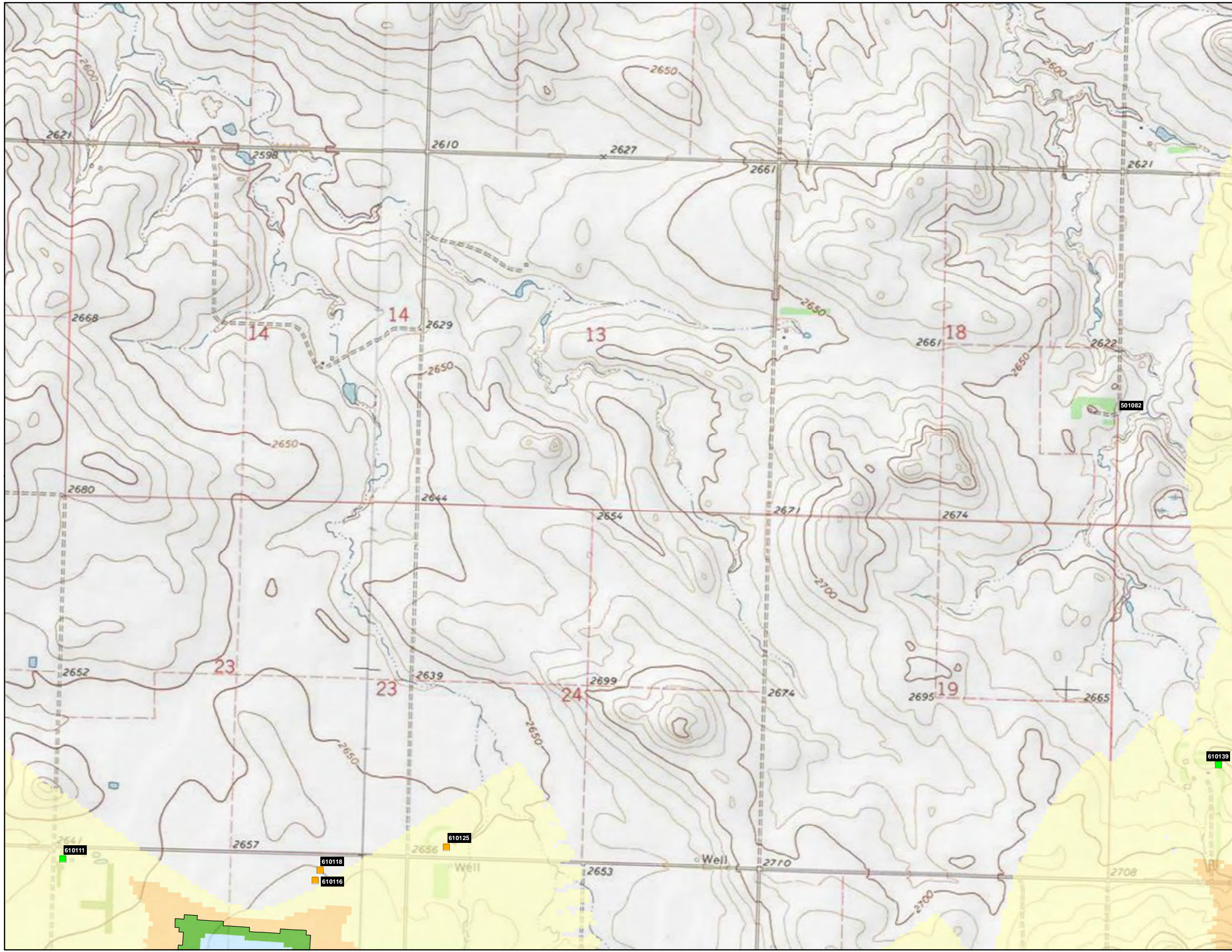
Receptors

- Occupied
- Unoccupied

0 500 1,000 1,500 2,000 FEET

N

REFERENCE MAP



NEXTERA ENERGY
 RESOURCES, LLC
 BRADY WIND PROJECT
 STARK COUNTY
 NORTH DAKOTA

FIGURE 2
 SHEET 9
 EXPECTED SHADOW FLICKER
 IMPACT AREAS (SCENARIO A –
 PRIMARY TURBINES ONLY)

JANUARY 2016

Proposed Turbine Array (11/6/2015)

- GE Xle 1.715-103 Turbine
- GE Xle 1.79-100 Turbine

Shadow Flicker (hours per year)

- 0 - 15
- >15 - 30
- >30 - 50
- >50 - 100
- >100 - 200
- >200

□ 30 hours per year limit

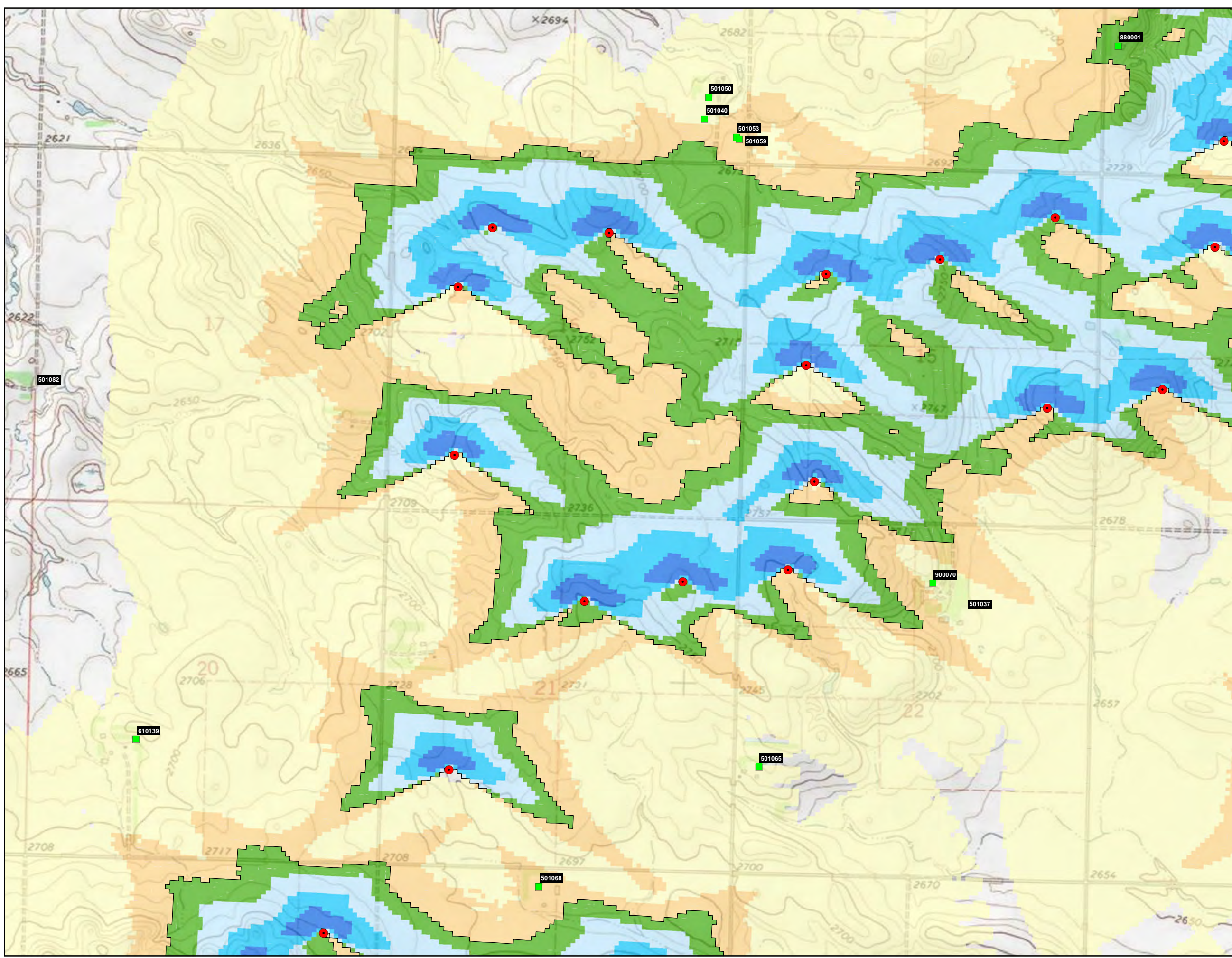
Receptors

- Occupied
- Unoccupied

0 500 1,000 1,500 2,000 FEET



REFERENCE MAP



NEXTERA ENERGY
 RESOURCES, LLC
 BRADY WIND PROJECT
 STARK COUNTY
 NORTH DAKOTA

FIGURE 2
 SHEET 10
 EXPECTED SHADOW FLICKER
 IMPACT AREAS (SCENARIO A –
 PRIMARY TURBINES ONLY)

JANUARY 2016

Proposed Turbine Array (11/6/2015)

- GE Xle 1.715-103 Turbine
- GE Xle 1.79-100 Turbine

Shadow Flicker (hours per year)

- 0 - 15
- >15 - 30
- >30 - 50
- >50 - 100
- >100 - 200
- >200

□ 30 hours per year limit

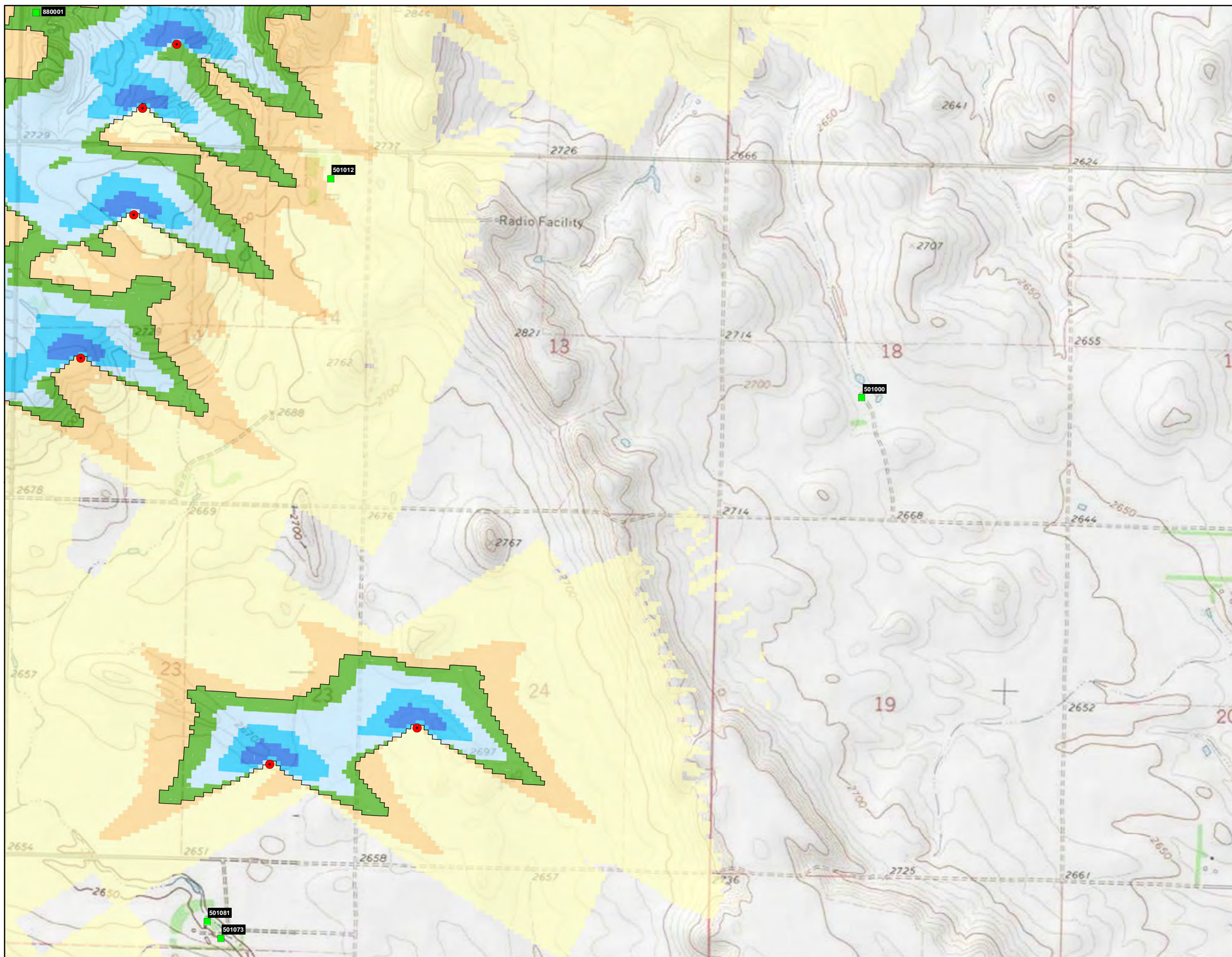
Receptors

- Occupied
- Unoccupied

0 500 1,000 1,500 2,000 FEET



REFERENCE MAP



NEXTERA ENERGY
 RESOURCES, LLC
 BRADY WIND PROJECT
 STARK COUNTY
 NORTH DAKOTA

FIGURE 2
 SHEET 11
 EXPECTED SHADOW FLICKER
 IMPACT AREAS (SCENARIO A –
 PRIMARY TURBINES ONLY)

JANUARY 2016

Proposed Turbine Array (11/6/2015)

- GE Xle 1.715-103 Turbine
- GE Xle 1.79-100 Turbine

Shadow Flicker (hours per year)

- 0 - 15
- >15 - 30
- >30 - 50
- >50 - 100
- >100 - 200
- >200
- 30 hours per year limit

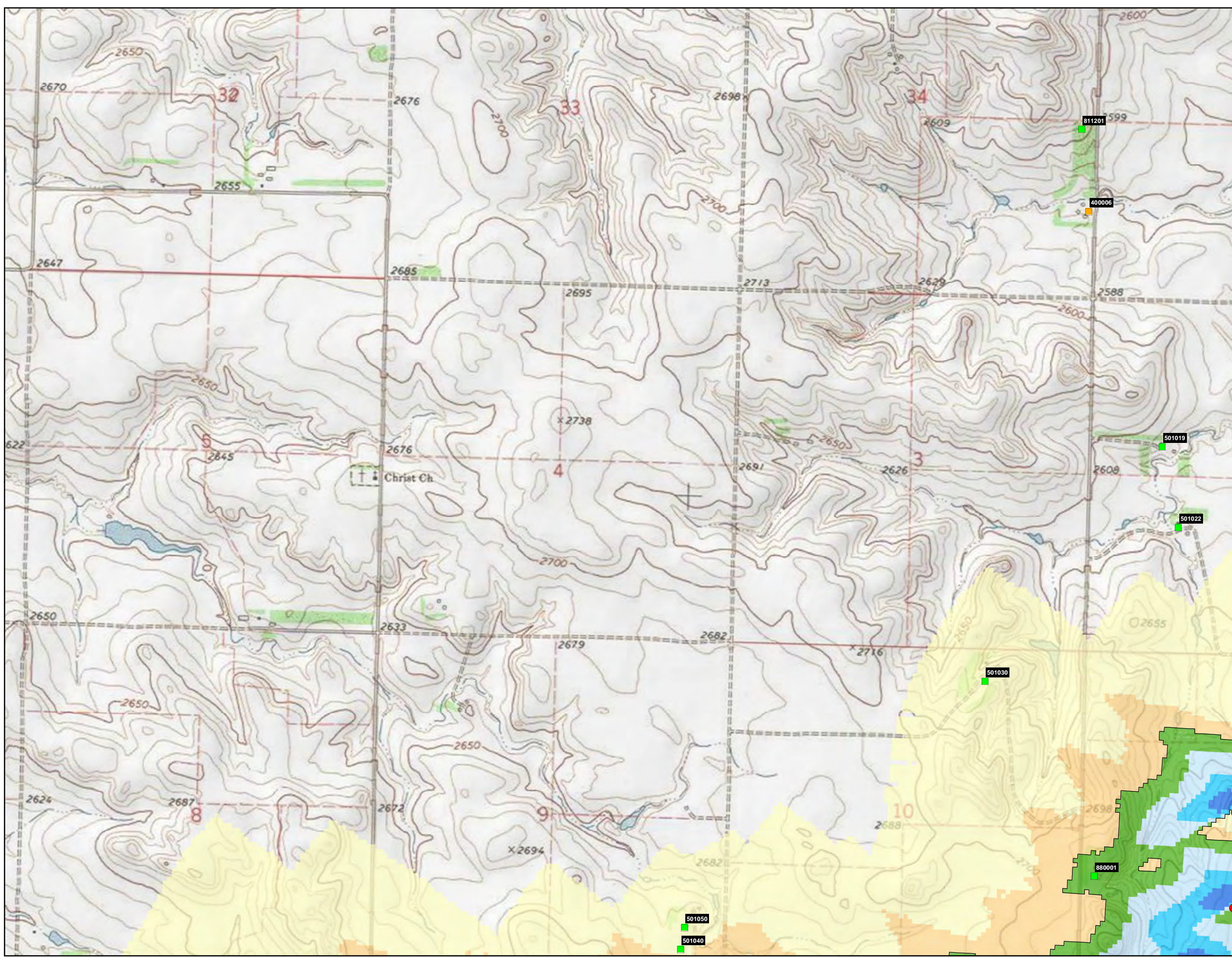
Receptors

- Occupied
- Unoccupied

0 500 1,000 1,500 2,000 FEET



REFERENCE MAP



NEXTERA ENERGY
RESOURCES, LLC
BRADY WIND PROJECT
STARK COUNTY
NORTH DAKOTA

FIGURE 2
SHEET 12
EXPECTED SHADOW FLICKER
IMPACT AREAS (SCENARIO A –
PRIMARY TURBINES ONLY)

JANUARY 2016

Proposed Turbine Array (11/6/2015)

- GE Xle 1.715-103 Turbine
- GE Xle 1.79-100 Turbine

Shadow Flicker (hours per year)

- 0 - 15
- >15 - 30
- >30 - 50
- >50 - 100
- >100 - 200
- >200

□ 30 hours per year limit

Receptors

- Occupied
- Unoccupied

0 500 1,000 1,500 2,000 FEET



REFERENCE MAP

