

NEXTERA ENERGY
RESOURCES, LLC
BRADY WIND PROJECT
STARK COUNTY
NORTH DAKOTA

FIGURE 5
SHEET 1
NO ALTERNATES:
RECEIVED SOUND LEVELS -
WIND TURBINES AT MAXIMUM
ROTATIONAL WIND SPEED

JANUARY 2016

Proposed Turbine Array (11/6/2015)

- GE 1.7 MW Turbine
- GE 1.79 MW Turbine

Receptors

- Occupied
- Unoccupied
- △ Substation

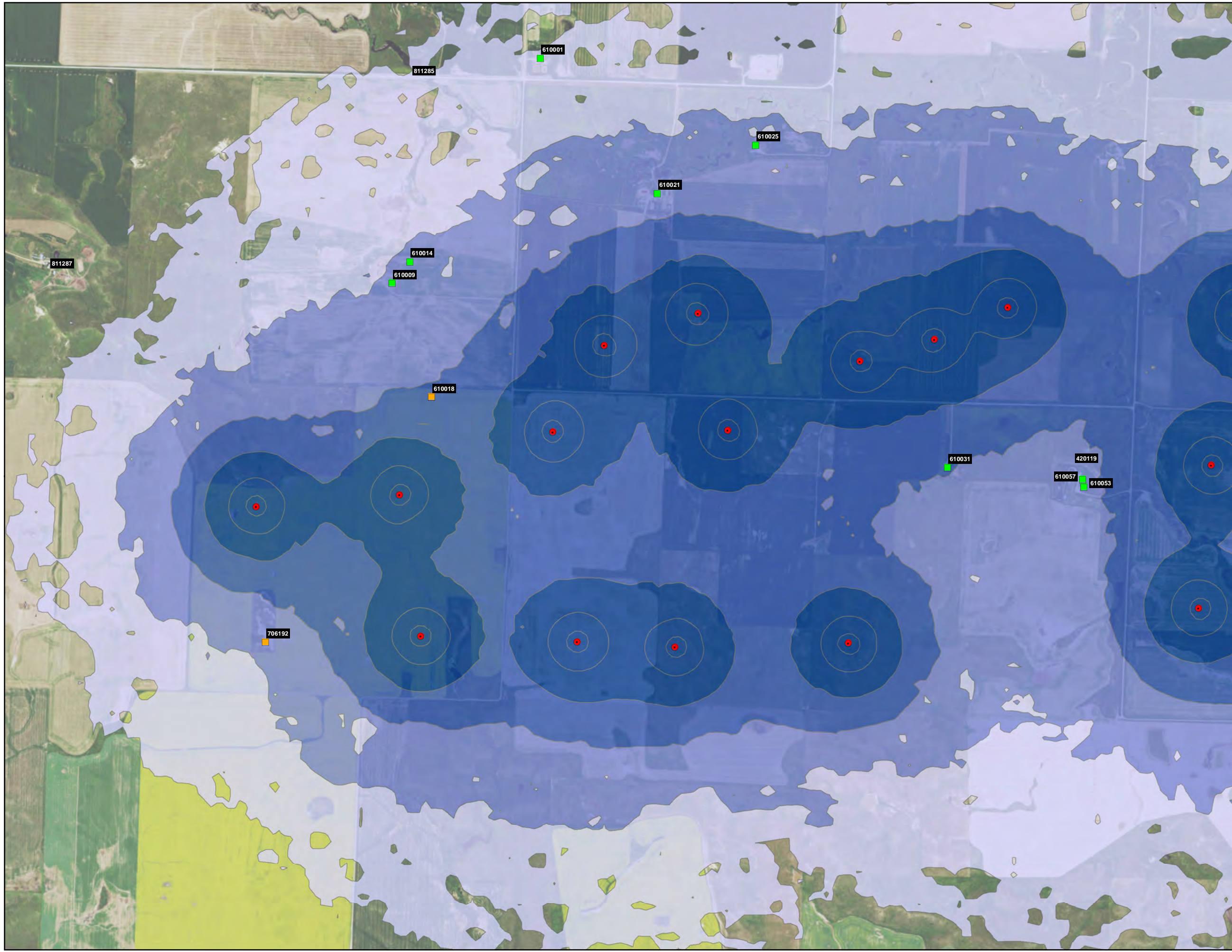
Sound Level Contour Ranges (dBA)

- 35-40
- >40-45
- >45-50
- >50

0 500 1,000 1,500 2,000 FEET

N

REFERENCE MAP



NEXTERA ENERGY
 RESOURCES, LLC
 BRADY WIND PROJECT
 STARK COUNTY
 NORTH DAKOTA

FIGURE 5
 SHEET 2
 NO ALTERNATES:
 RECEIVED SOUND LEVELS -
 WIND TURBINES AT MAXIMUM
 ROTATIONAL WIND SPEED

JANUARY 2016

Proposed Turbine Array (11/6/2015)

- GE 1.7 MW Turbine
- GE 1.79 MW Turbine

Receptors

- Occupied
- Unoccupied
- △ Substation

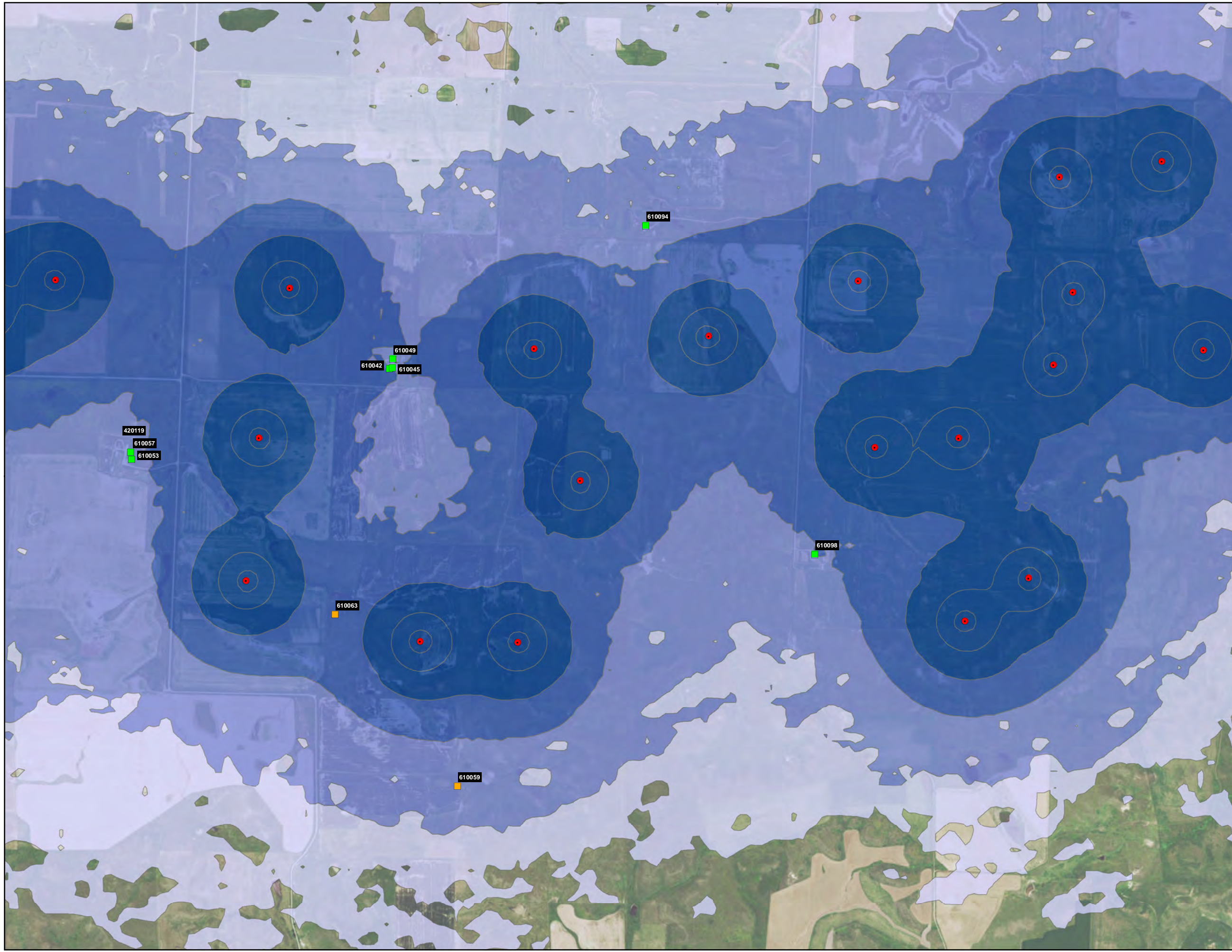
Sound Level Contour Ranges (dBA)

- 35-40
- >40-45
- >45-50
- >50

0 500 1,000 1,500 2,000 FEET



REFERENCE MAP



NEXTERA ENERGY
 RESOURCES, LLC
 BRADY WIND PROJECT
 STARK COUNTY
 NORTH DAKOTA

FIGURE 5
 SHEET 3
 NO ALTERNATES:
 RECEIVED SOUND LEVELS -
 WIND TURBINES AT MAXIMUM
 ROTATIONAL WIND SPEED

JANUARY 2016

Proposed Turbine Array (11/6/2015)

- GE 1.7 MW Turbine
- GE 1.79 MW Turbine

Receptors

- Occupied
- Unoccupied
- △ Substation

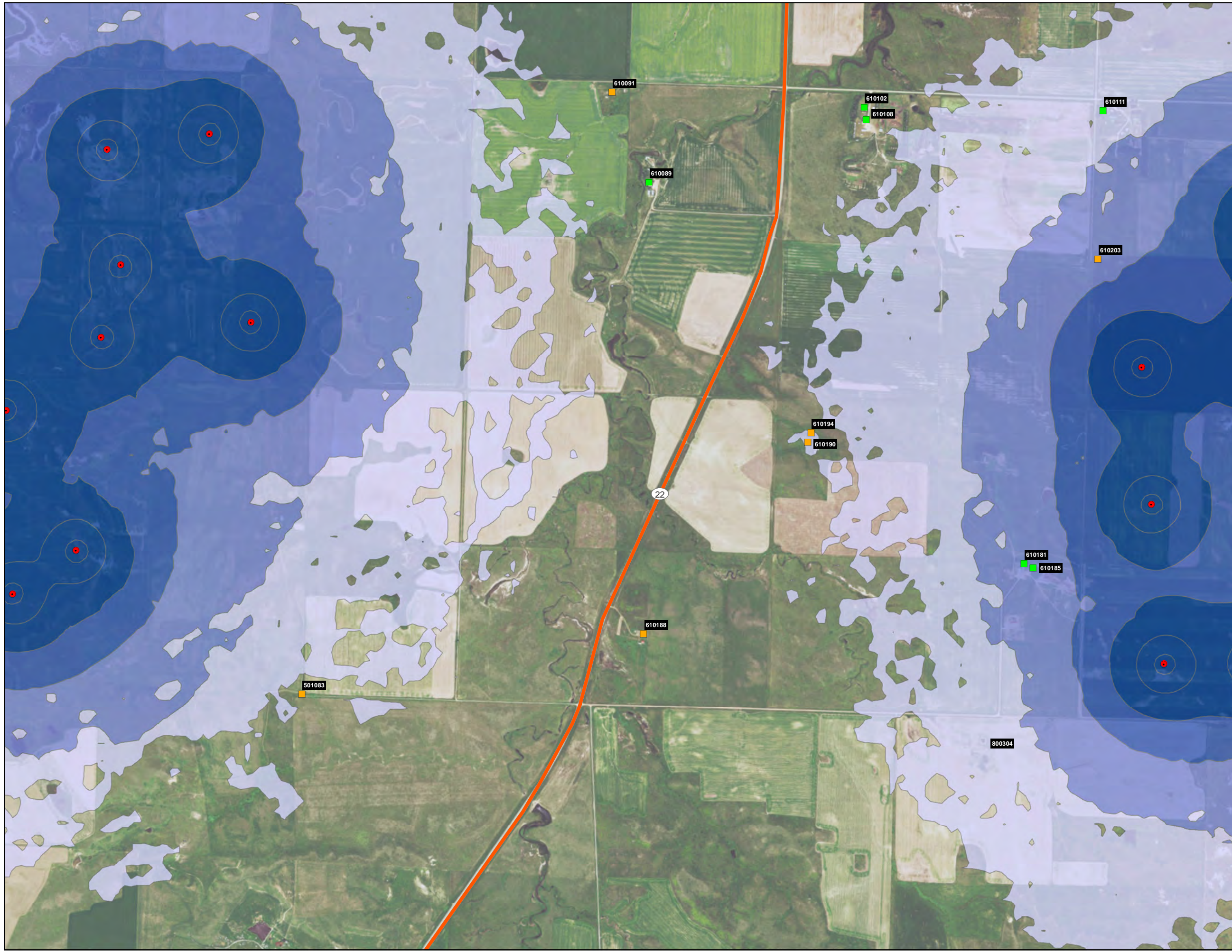
Sound Level Contour Ranges (dBA)

- 35-40
- >40-45
- >45-50
- >50

0 500 1,000 1,500 2,000 FEET



REFERENCE MAP



NEXTERA ENERGY
 RESOURCES, LLC
 BRADY WIND PROJECT
 STARK COUNTY
 NORTH DAKOTA

FIGURE 5
 SHEET 4
 NO ALTERNATES:
 RECEIVED SOUND LEVELS -
 WIND TURBINES AT MAXIMUM
 ROTATIONAL WIND SPEED

JANUARY 2016

Proposed Turbine Array (11/6/2015)

- GE 1.7 MW Turbine
- GE 1.79 MW Turbine

Receptors

- Occupied
- Unoccupied
- △ Substation

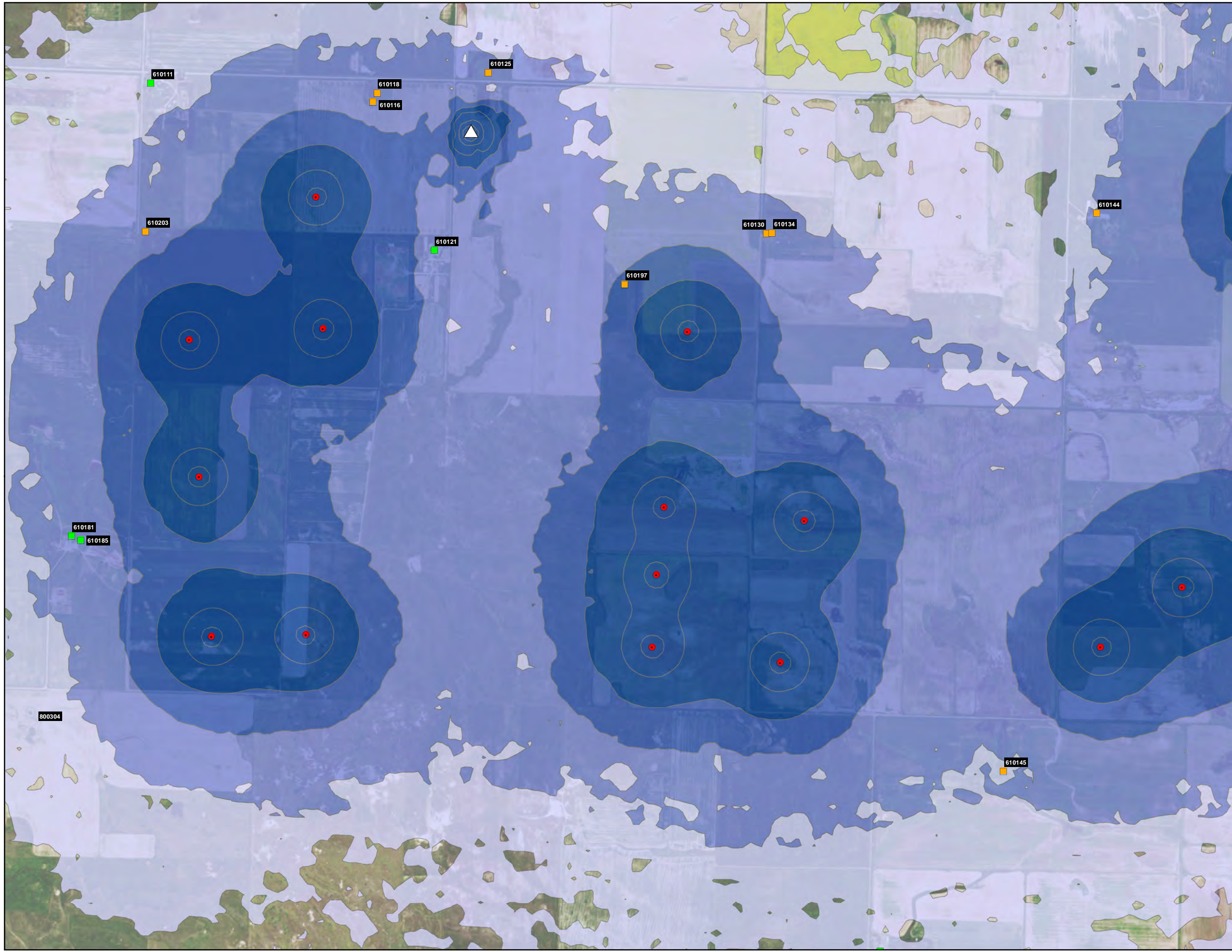
Sound Level Contour Ranges (dBA)

- 35-40
- >40-45
- >45-50
- >50

0 500 1,000 1,500 2,000 FEET



REFERENCE MAP



NEXTERA ENERGY
RESOURCES, LLC
BRADY WIND PROJECT
STARK COUNTY
NORTH DAKOTA

FIGURE 5
SHEET 5
NO ALTERNATES:
RECEIVED SOUND LEVELS -
WIND TURBINES AT MAXIMUM
ROTATIONAL WIND SPEED

JANUARY 2016

Proposed Turbine Array (11/6/2015)

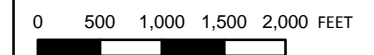
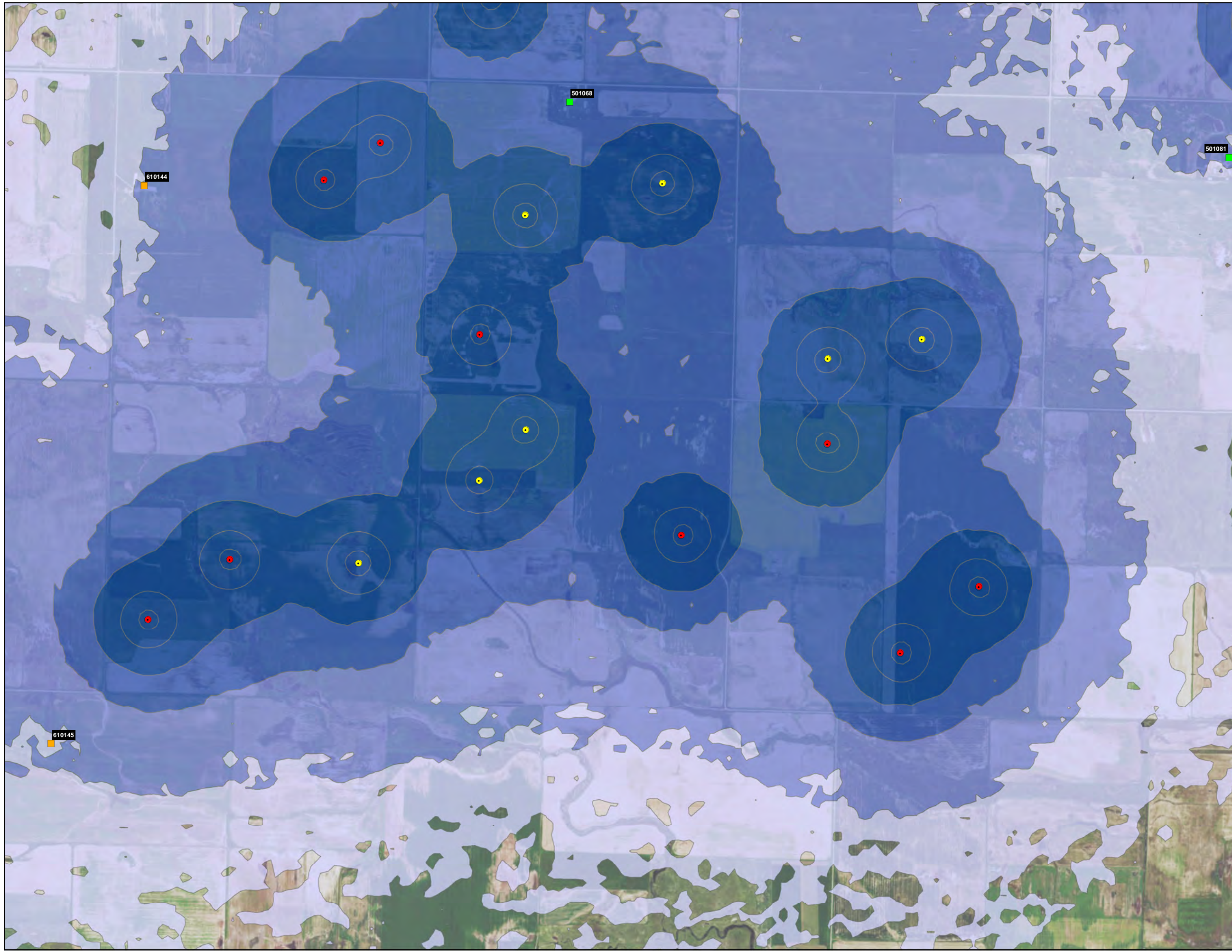
- GE 1.7 MW Turbine
- GE 1.79 MW Turbine

Receptors

- Occupied
- Unoccupied
- △ Substation

Sound Level Contour Ranges (dBA)

- 35-40
- >40-45
- >45-50
- >50



REFERENCE MAP



NEXTERA ENERGY
 RESOURCES, LLC
 BRADY WIND PROJECT
 STARK COUNTY
 NORTH DAKOTA

FIGURE 5
 SHEET 6
 NO ALTERNATES:
 RECEIVED SOUND LEVELS -
 WIND TURBINES AT MAXIMUM
 ROTATIONAL WIND SPEED

JANUARY 2016

Proposed Turbine Array (11/6/2015)

- GE 1.7 MW Turbine
- GE 1.79 MW Turbine

Receptors

- Occupied
- Unoccupied
- △ Substation

Sound Level Contour Ranges (dBA)

- 35-40
- >40-45
- >45-50
- >50

0 500 1,000 1,500 2,000 FEET



REFERENCE MAP



NEXTERA ENERGY
 RESOURCES, LLC
 BRADY WIND PROJECT
 STARK COUNTY
 NORTH DAKOTA

FIGURE 5
 SHEET 7
 NO ALTERNATES:
 RECEIVED SOUND LEVELS -
 WIND TURBINES AT MAXIMUM
 ROTATIONAL WIND SPEED

JANUARY 2016

Proposed Turbine Array (11/6/2015)

- GE 1.7 MW Turbine
- GE 1.79 MW Turbine

Receptors

- Occupied
- Unoccupied
- △ Substation

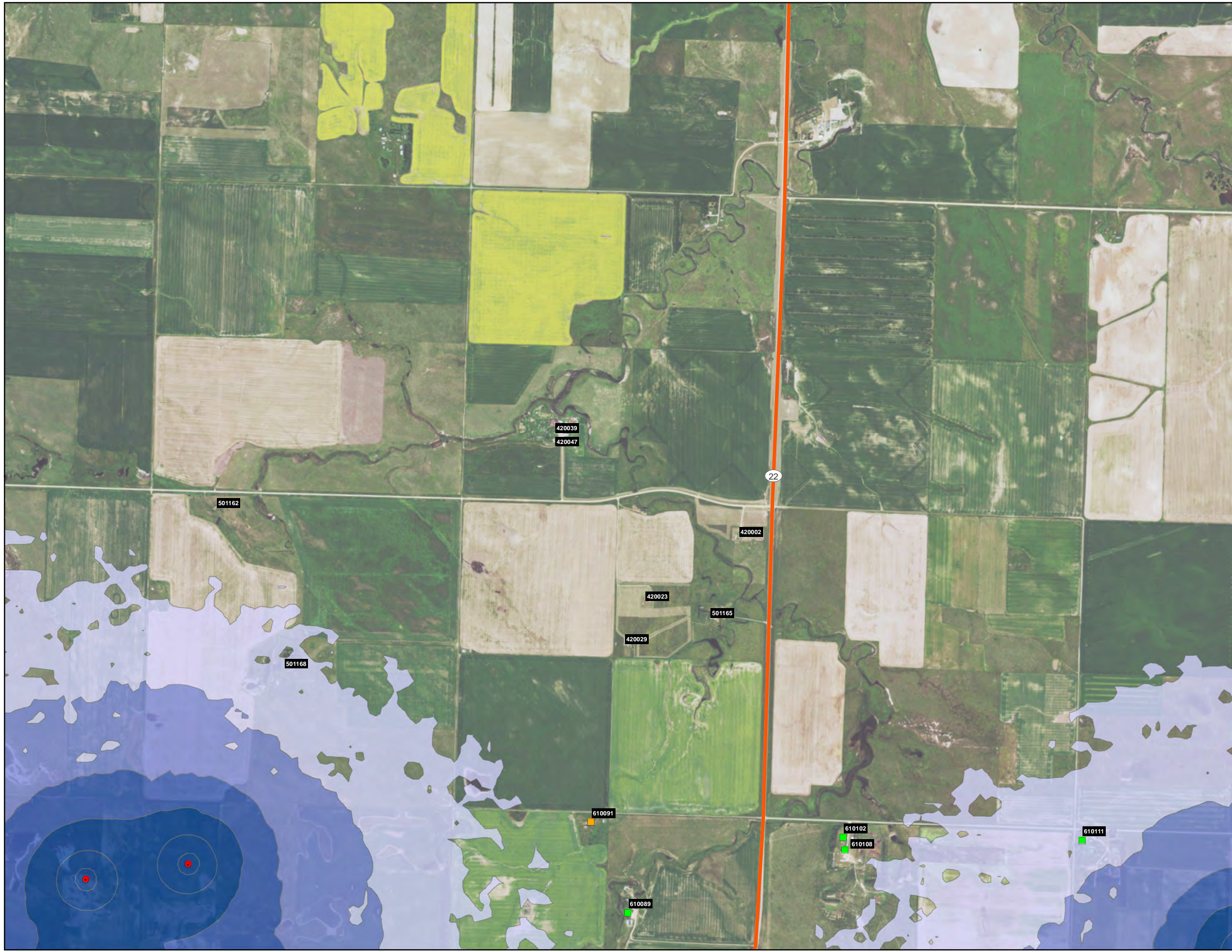
Sound Level Contour Ranges (dBA)

- 35-40
- >40-45
- >45-50
- >50

0 500 1,000 1,500 2,000 FEET



REFERENCE MAP



NEXTERA ENERGY
RESOURCES, LLC
BRADY WIND PROJECT
STARK COUNTY
NORTH DAKOTA

FIGURE 5
SHEET 8
NO ALTERNATES:
RECEIVED SOUND LEVELS -
WIND TURBINES AT MAXIMUM
ROTATIONAL WIND SPEED

JANUARY 2016

Proposed Turbine Array (11/6/2015)

- GE 1.7 MW Turbine
- GE 1.79 MW Turbine

Receptors

- Occupied
- Unoccupied
- △ Substation

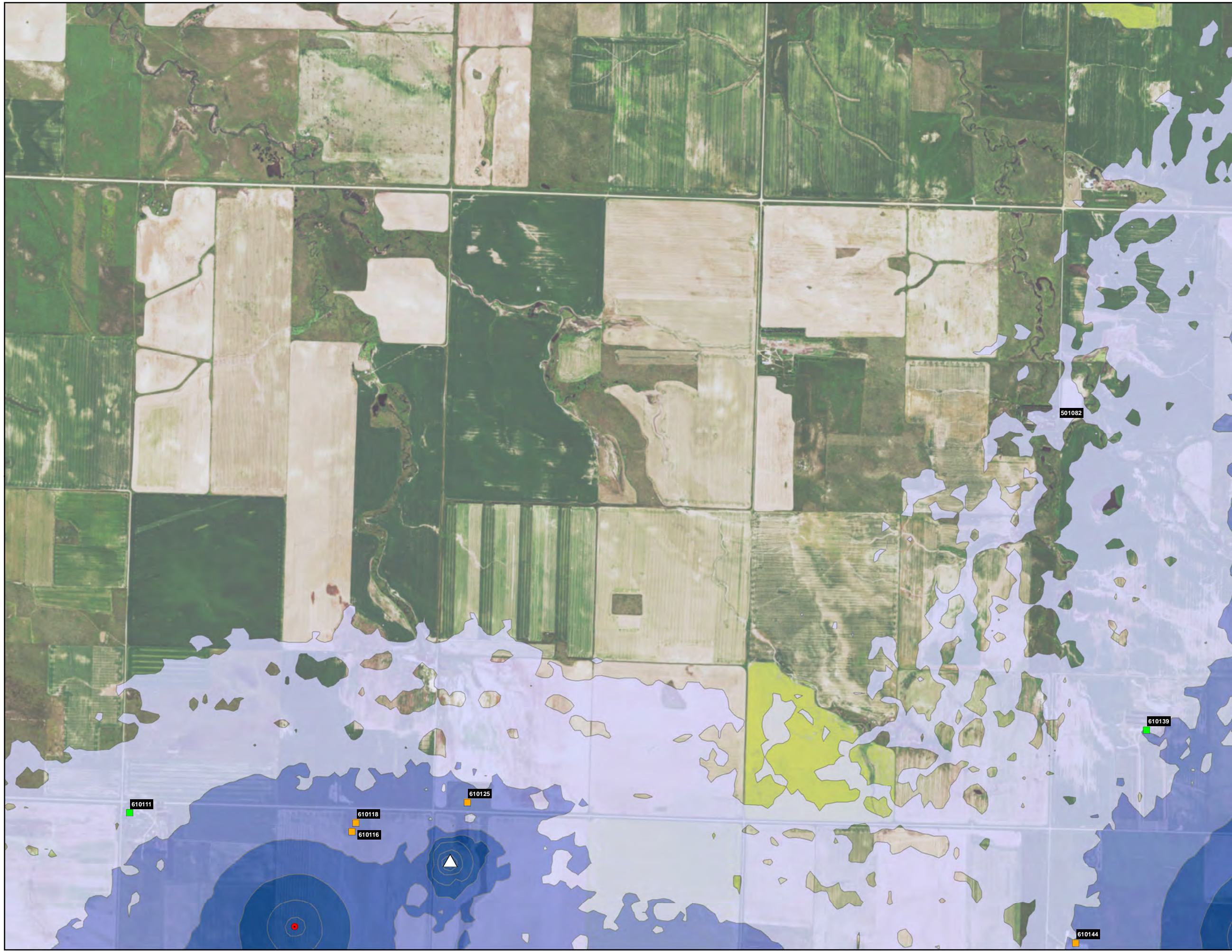
Sound Level Contour Ranges (dBA)

- 35-40
- >40-45
- >45-50
- >50

0 500 1,000 1,500 2,000 FEET

N

REFERENCE MAP



NEXTERA ENERGY
 RESOURCES, LLC
 BRADY WIND PROJECT
 STARK COUNTY
 NORTH DAKOTA

FIGURE 5
 SHEET 9
 NO ALTERNATES:
 RECEIVED SOUND LEVELS -
 WIND TURBINES AT MAXIMUM
 ROTATIONAL WIND SPEED

JANUARY 2016

Proposed Turbine Array (11/6/2015)

- GE 1.7 MW Turbine
- GE 1.79 MW Turbine

Receptors

- Occupied
- Unoccupied
- △ Substation

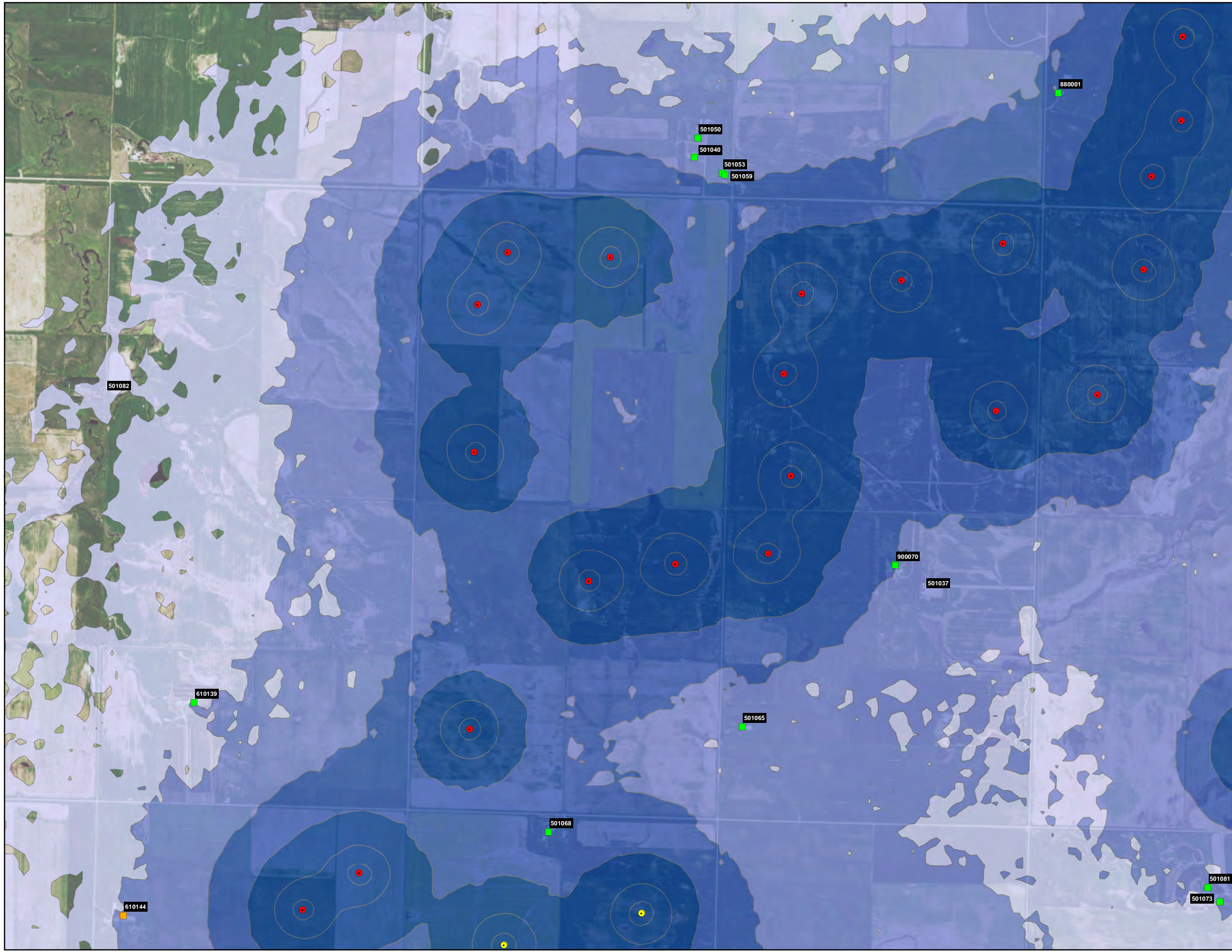
Sound Level Contour Ranges (dBA)

- 35-40
- >40-45
- >45-50
- >50

0 500 1,000 1,500 2,000 FEET

N

REFERENCE MAP



NEXTERA ENERGY
 RESOURCES, LLC
 BRADY WIND PROJECT
 STARK COUNTY
 NORTH DAKOTA

FIGURE 5
 SHEET 10
 NO ALTERNATES:
 RECEIVED SOUND LEVELS -
 WIND TURBINES AT MAXIMUM
 ROTATIONAL WIND SPEED

JANUARY 2016

Proposed Turbine Array (11/6/2015)

- GE 1.7 MW Turbine
- GE 1.79 MW Turbine

Receptors

- Occupied
- Unoccupied
- △ Substation

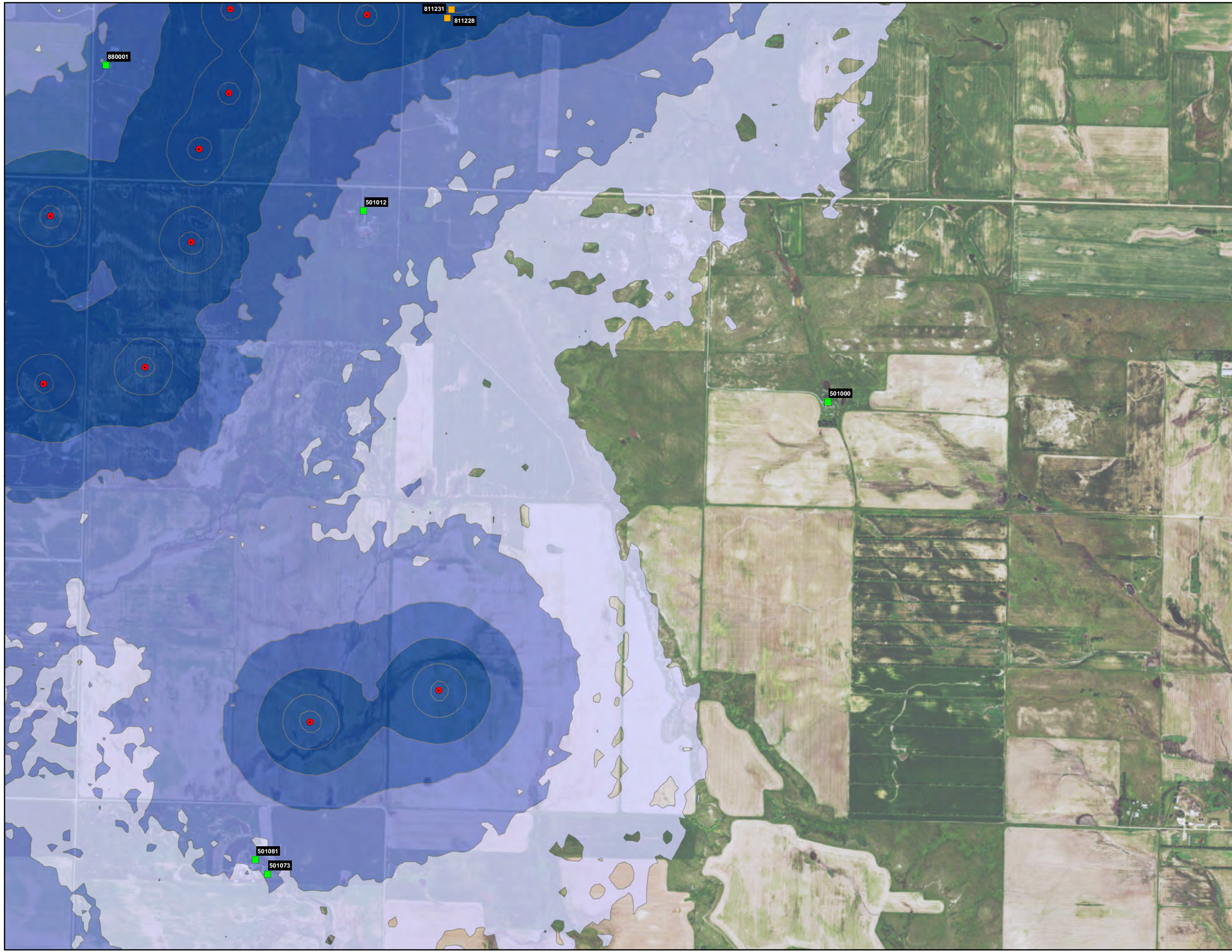
Sound Level Contour Ranges (dBA)

- 35-40
- >40-45
- >45-50
- >50

0 500 1,000 1,500 2,000 FEET



REFERENCE MAP



NEXTERA ENERGY
RESOURCES, LLC
BRADY WIND PROJECT
STARK COUNTY
NORTH DAKOTA

FIGURE 5
SHEET 11
NO ALTERNATES:
RECEIVED SOUND LEVELS -
WIND TURBINES AT MAXIMUM
ROTATIONAL WIND SPEED

JANUARY 2016

Proposed Turbine Array (11/6/2015)

- GE 1.7 MW Turbine
- GE 1.79 MW Turbine

Receptors

- Occupied
- Unoccupied
- △ Substation

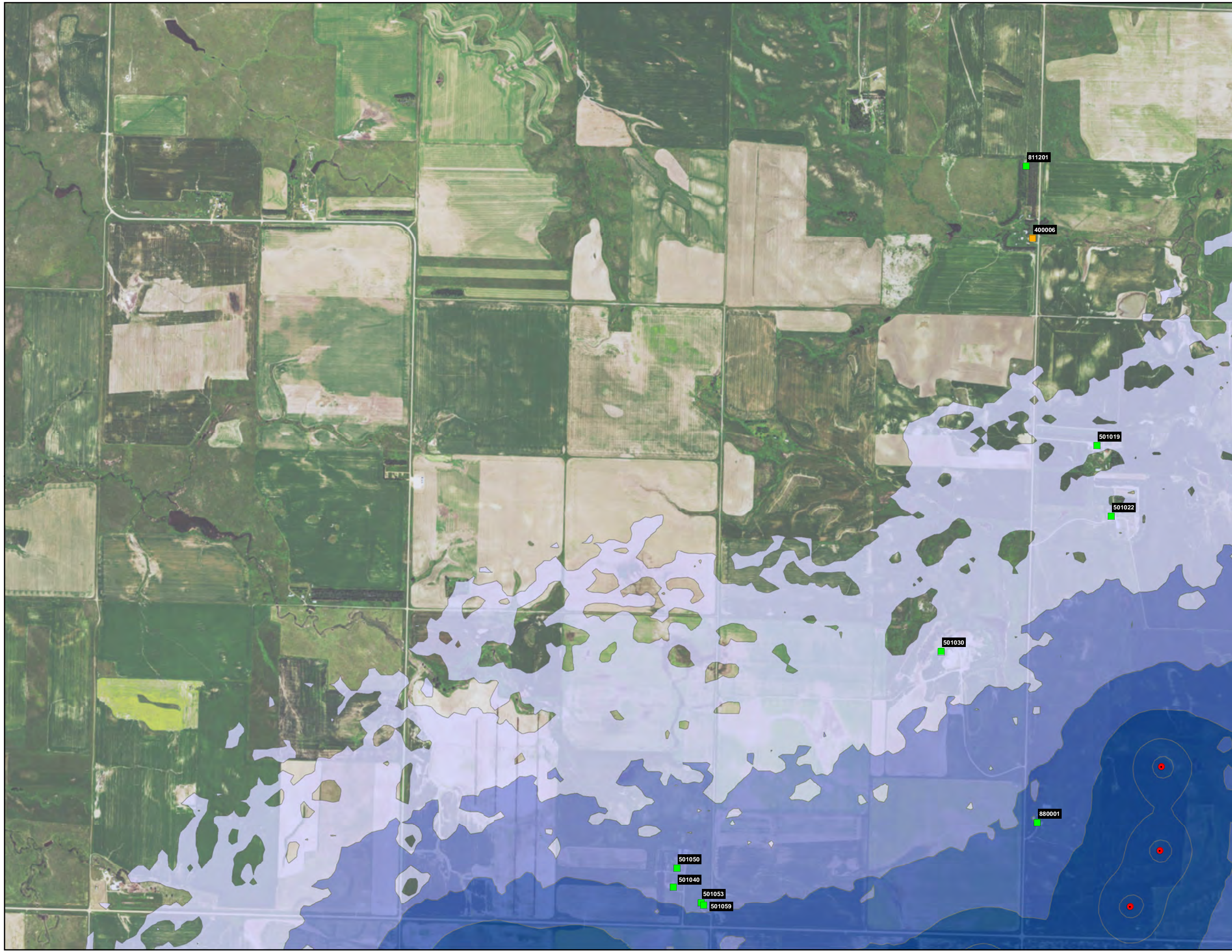
Sound Level Contour Ranges (dBA)

- 35-40
- >40-45
- >45-50
- >50

0 500 1,000 1,500 2,000 FEET



REFERENCE MAP



NEXTERA ENERGY
 RESOURCES, LLC
 BRADY WIND PROJECT
 STARK COUNTY
 NORTH DAKOTA

FIGURE 5
 SHEET 12
 NO ALTERNATES:
 RECEIVED SOUND LEVELS -
 WIND TURBINES AT MAXIMUM
 ROTATIONAL WIND SPEED

JANUARY 2016

Proposed Turbine Array (11/6/2015)

- GE 1.7 MW Turbine
- GE 1.79 MW Turbine

Receptors

- Occupied
- Unoccupied
- △ Substation

Sound Level Contour Ranges (dBA)

- 35-40
- >40-45
- >45-50
- >50

0 500 1,000 1,500 2,000 FEET



REFERENCE MAP

