



Brady Wind Energy Center

Stark County, ND

Legend

Proposed Project Features

- Permanent Met Tower
- Temporary Met Tower
- Proposed Turbine (10/30/15)
- Alternative Turbine (10/30/15)
- Collection System (10/30/15)
- Service Roads (10/30/15)
- Project Boundary (10/21/15)
- Laydown
- Temporary Turbine Storage Area
- O&M Building
- Substation

*USGS Topo

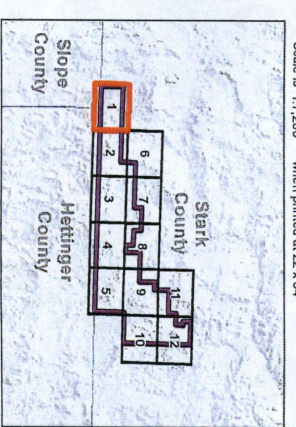
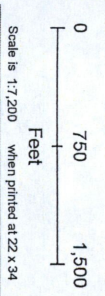
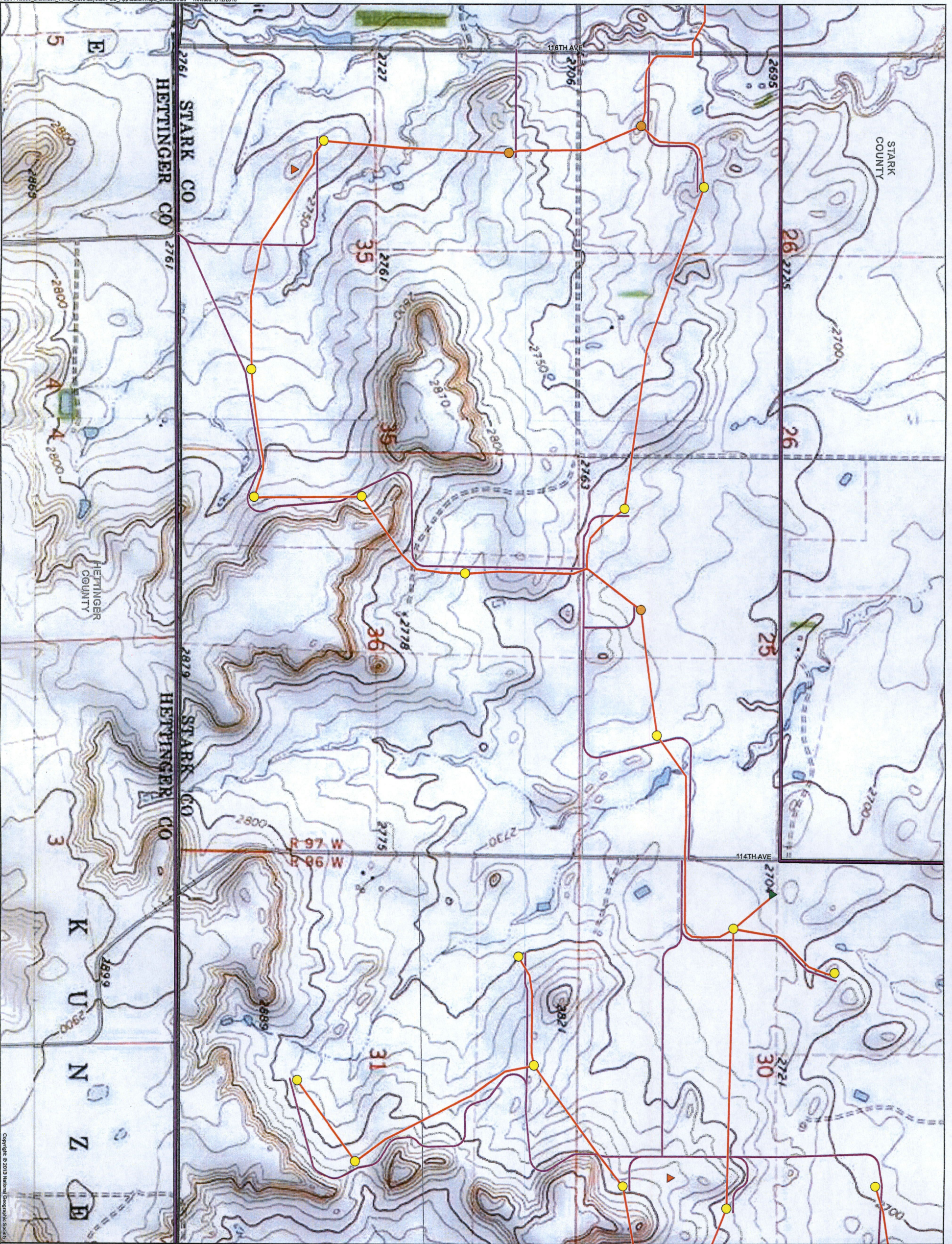


Figure 3: Project Area (Topographical) - Sheet 1



Brady Wind Energy Center

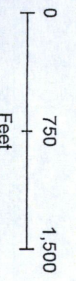
Stark County, ND

Legend

Proposed Project Features

- Permanent Met Tower
- Temporary Met Tower
- Proposed Turbine (10/30/15)
- Alternative Turbine (10/30/15)
- Collection System (10/30/15)
- Service Roads (10/30/15)
- Project Boundary (10/21/15)
- Laydown
- Temporary Turbine Storage Area
- O&M Building
- Substation

*USGS Topo



Scale is 1:7,200 when printed at 22 x 34

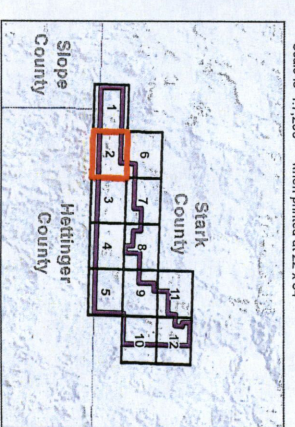
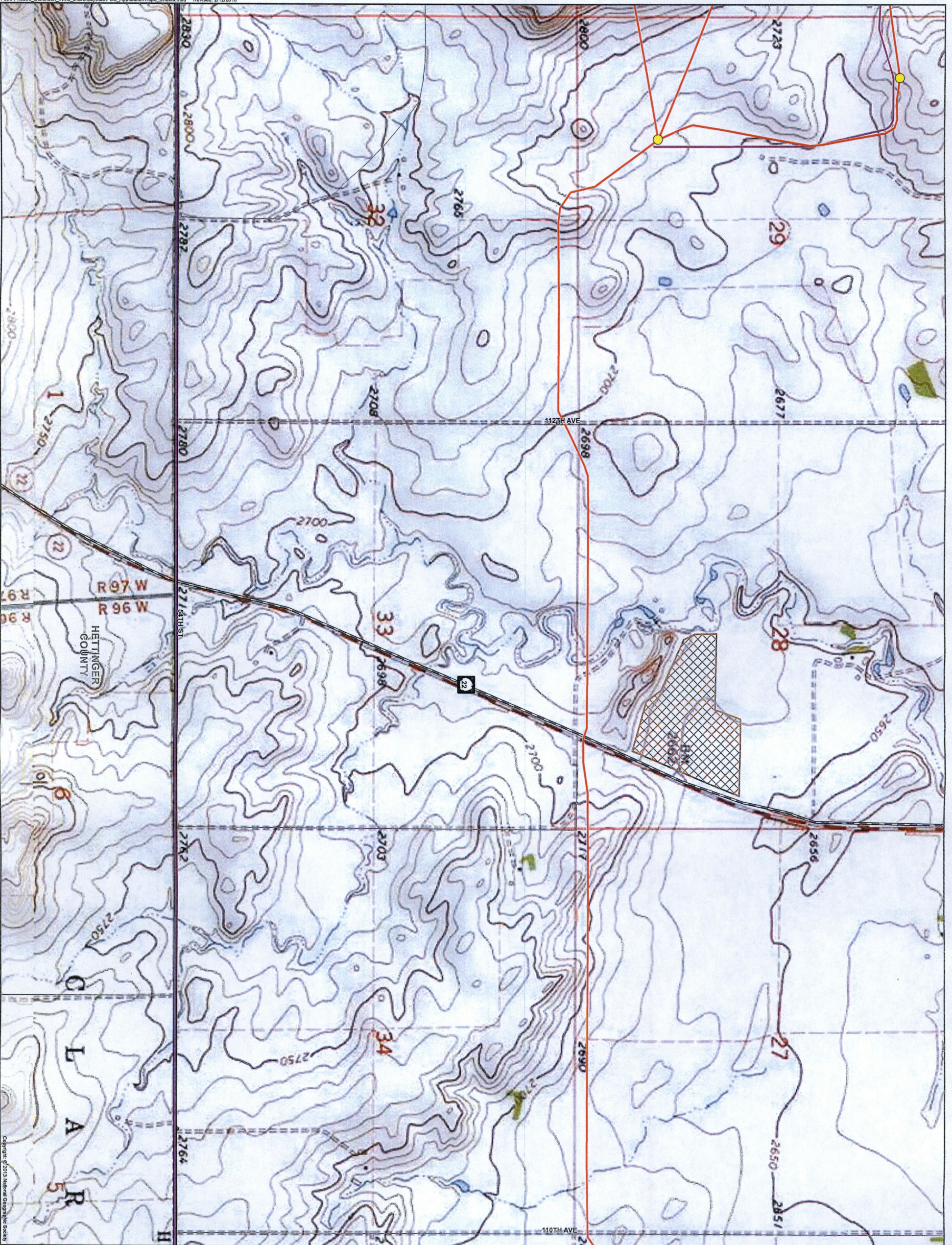


Figure 3: Project Area (Topographical) - Sheet 2



Brady Wind Energy Center

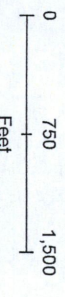
Stark County, ND

Legend

Proposed Project Features

- Permanent Met Tower
- Temporary Met Tower
- Proposed Turbine (10/30/15)
- Alternative Turbine (10/30/15)
- Collection System (10/30/15)
- Service Roads (10/30/15)
- Project Boundary (10/2/115)
- Laydown
- Temporary Turbine Storage Area
- O&M Building
- Substation

*USGS Topo



Scale is 1:7,200 when printed at 22 x 34

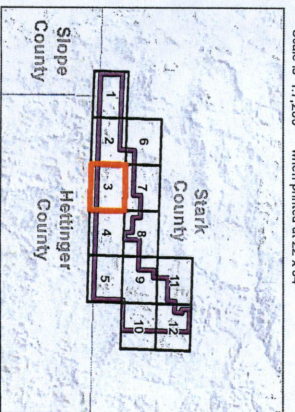
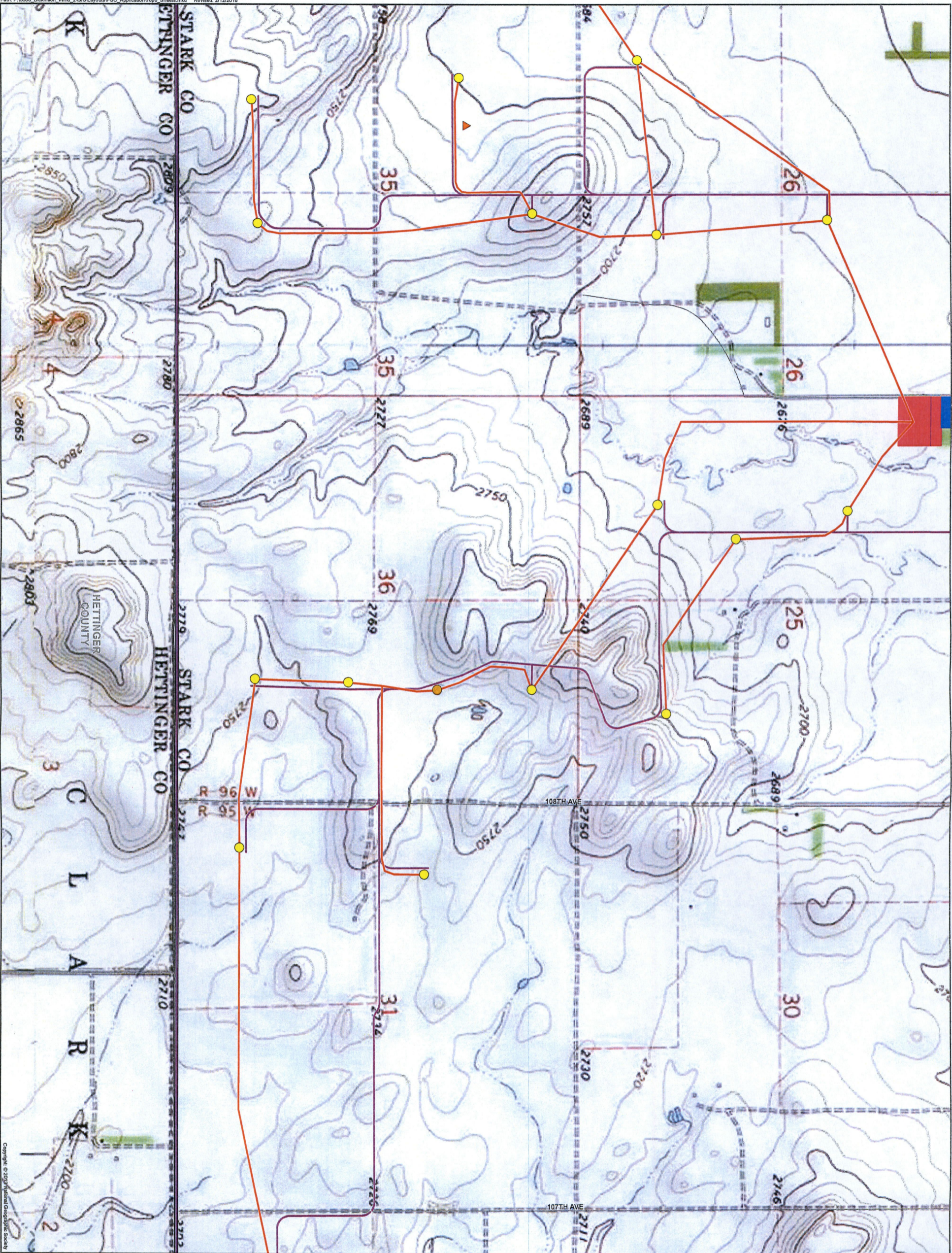


Figure 3: Project Area (Topographical) - Sheet 3



Brady Wind Energy Center

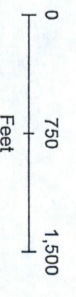
Stark County, ND

Legend

Proposed Project Features

- Permanent Met Tower
- Temporary Met Tower
- Proposed Turbine (10/30/15)
- Alternative Turbine (10/30/15)
- Collection System (10/30/15)
- Service Roads (10/30/15)
- Project Boundary (10/2/1/15)
- Laydown
- Temporary Turbine Storage Area
- O&M Building
- Substation

*USGS Topo



Scale is 1:17,200 when printed at 22 x 34

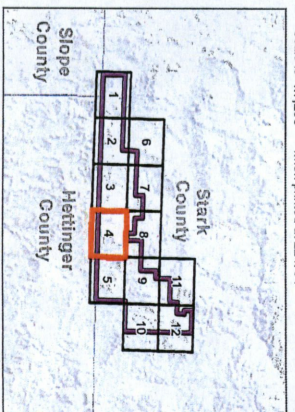
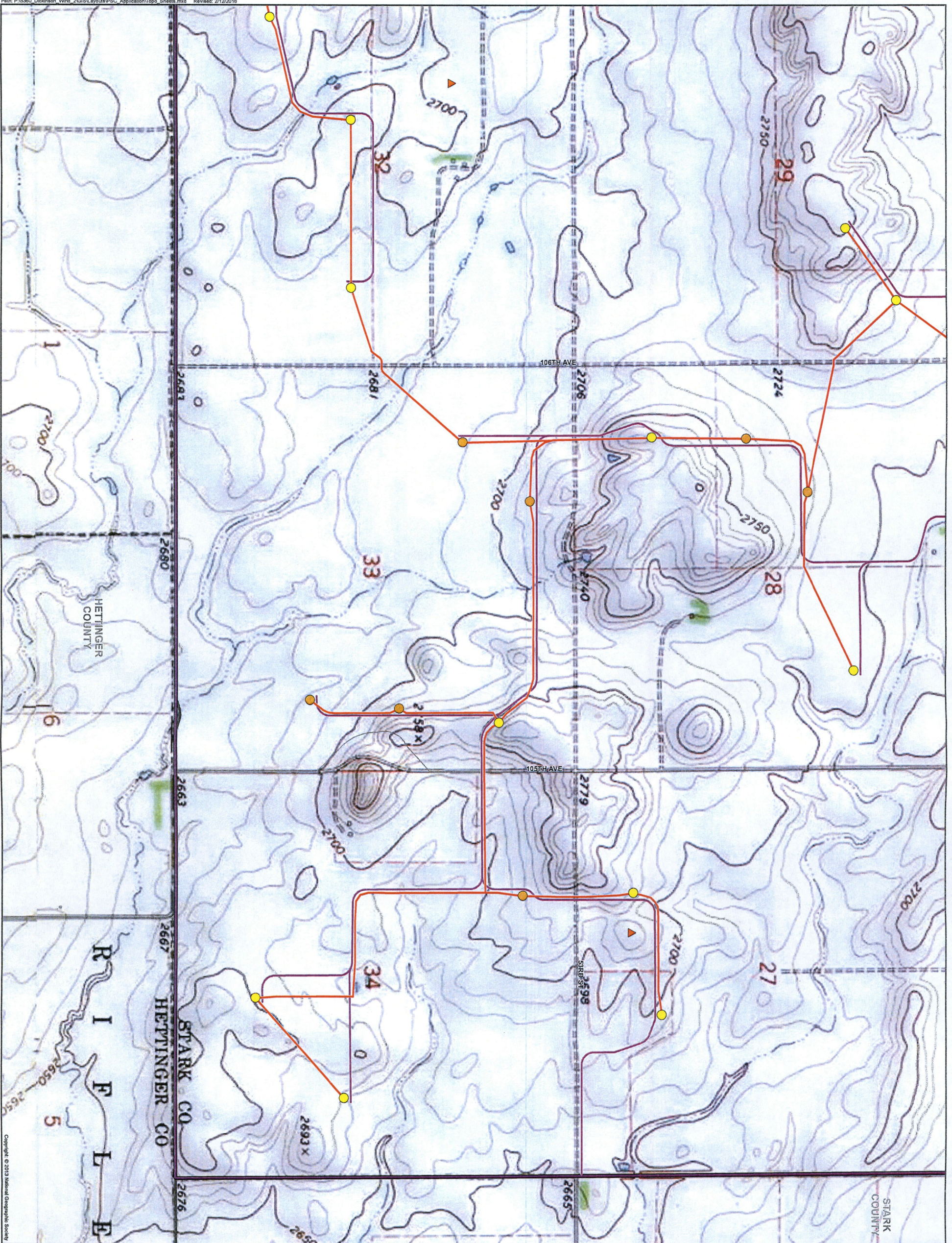


Figure 3: Project Area (Topographical) - Sheet 4



Brady Wind Energy Center

Stark County, ND

Legend

Proposed Project Features

- Permanent Met Tower
- Temporary Met Tower
- Proposed Turbine (10/30/15)
- Alternative Turbine (10/30/15)
- Collection System (10/30/15)
- Service Roads (10/30/15)
- Project Boundary (10/21/15)
- Laydown
- Temporary Turbine Storage Area
- O&M Building
- Substation
- USGS Topo

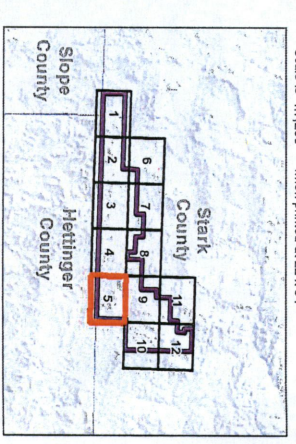
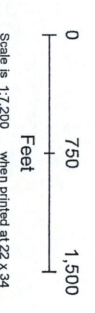
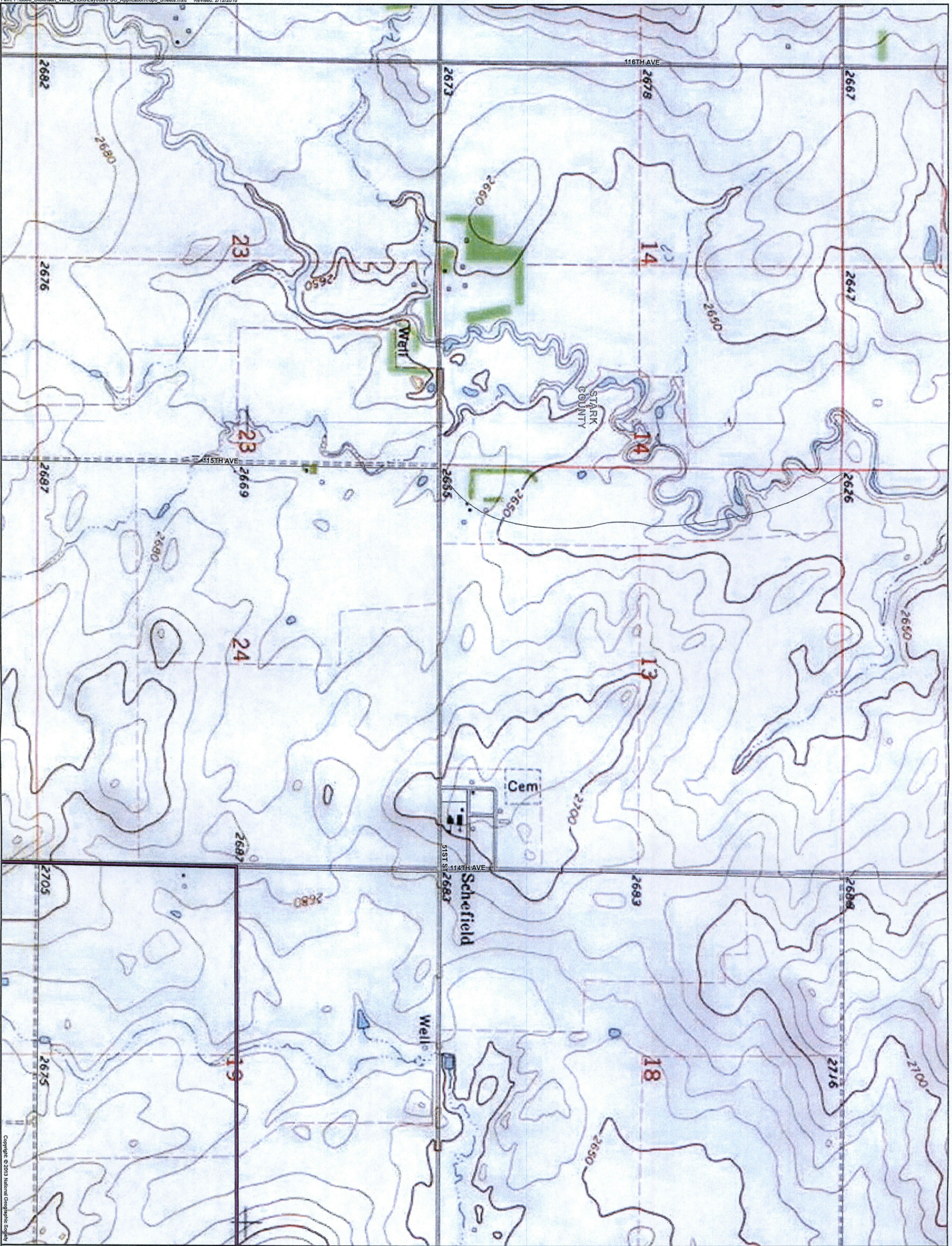


Figure 3: Project Area (Topographical) - Sheet 5



Brady Wind Energy Center

Stark County, ND

Legend

Proposed Project Features

- ▲ Permanent Met Tower
- ▲ Temporary Met Tower
- Proposed Turbine (10/30/15)
- Alternative Turbine (10/30/15)
- Collection System (10/30/15)
- Service Roads (10/30/15)
- Project Boundary (10/21/15)
- ▨ Laydown
- ▨ Temporary Turbine Storage Area
- O&M Building
- Substation

*USGS Topo

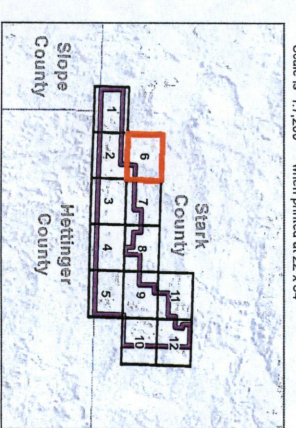
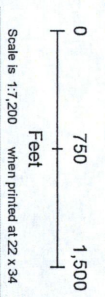
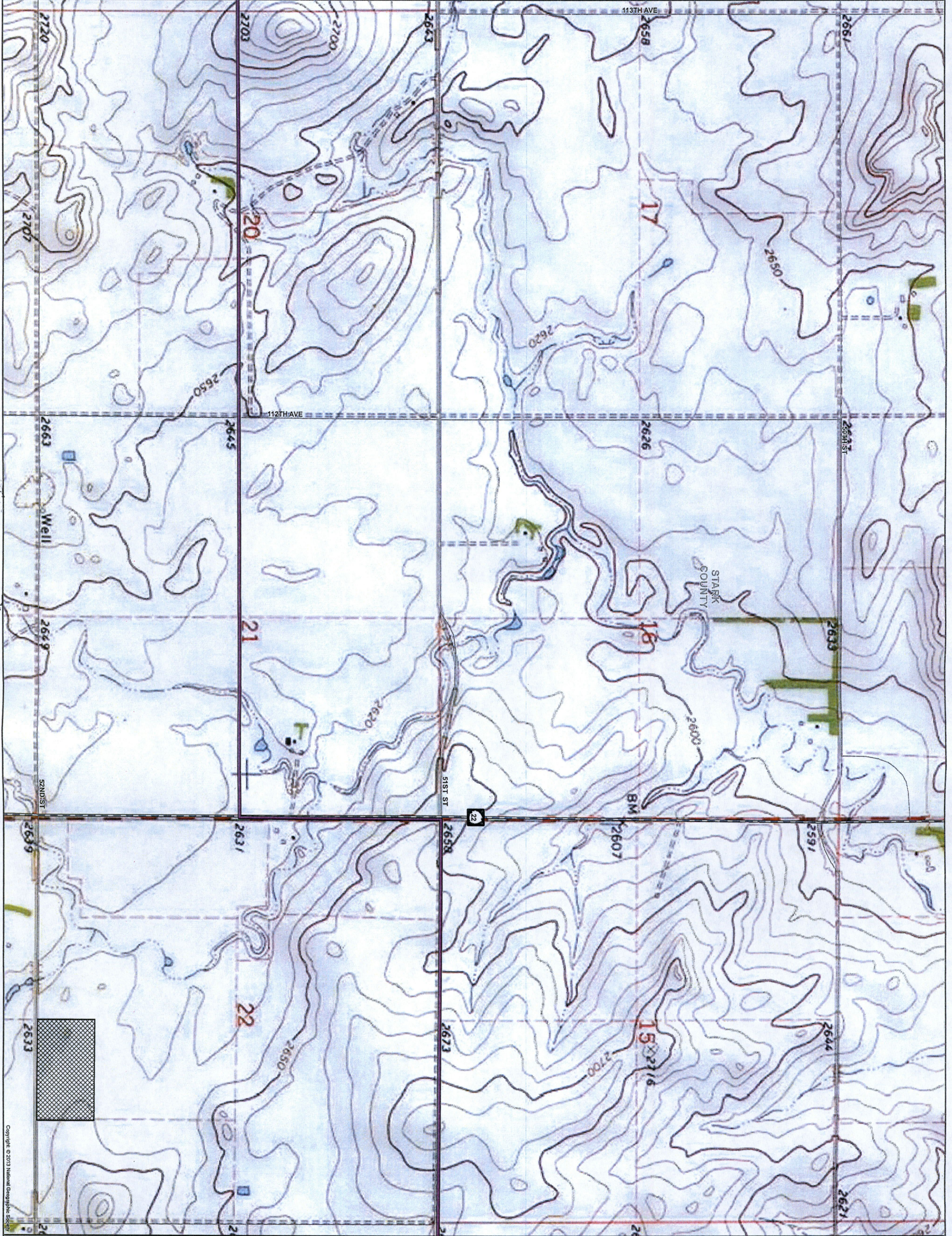


Figure 3: Project Area (Topographical) - Sheet 6



Brady Wind Energy Center

Stark County, ND

Legend

- Proposed Project Features**
- ▲ Permanent Met Tower
 - ▲ Temporary Met Tower
 - Proposed Turbine (10/30/15)
 - Alternative Turbine (10/30/15)
 - Collection System (10/30/15)
 - Service Roads (10/30/15)
 - Project Boundary (10/21/15)
 - ▭ Laydown
 - ▨ Temporary Turbine Storage Area
 - O&M Building
 - Substation
- *USGS Topo

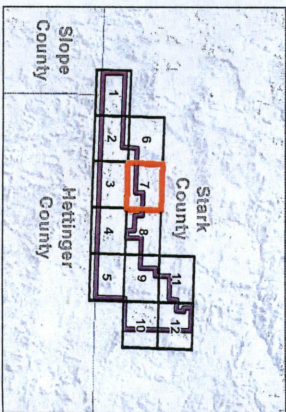
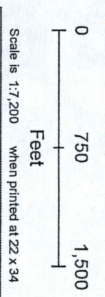
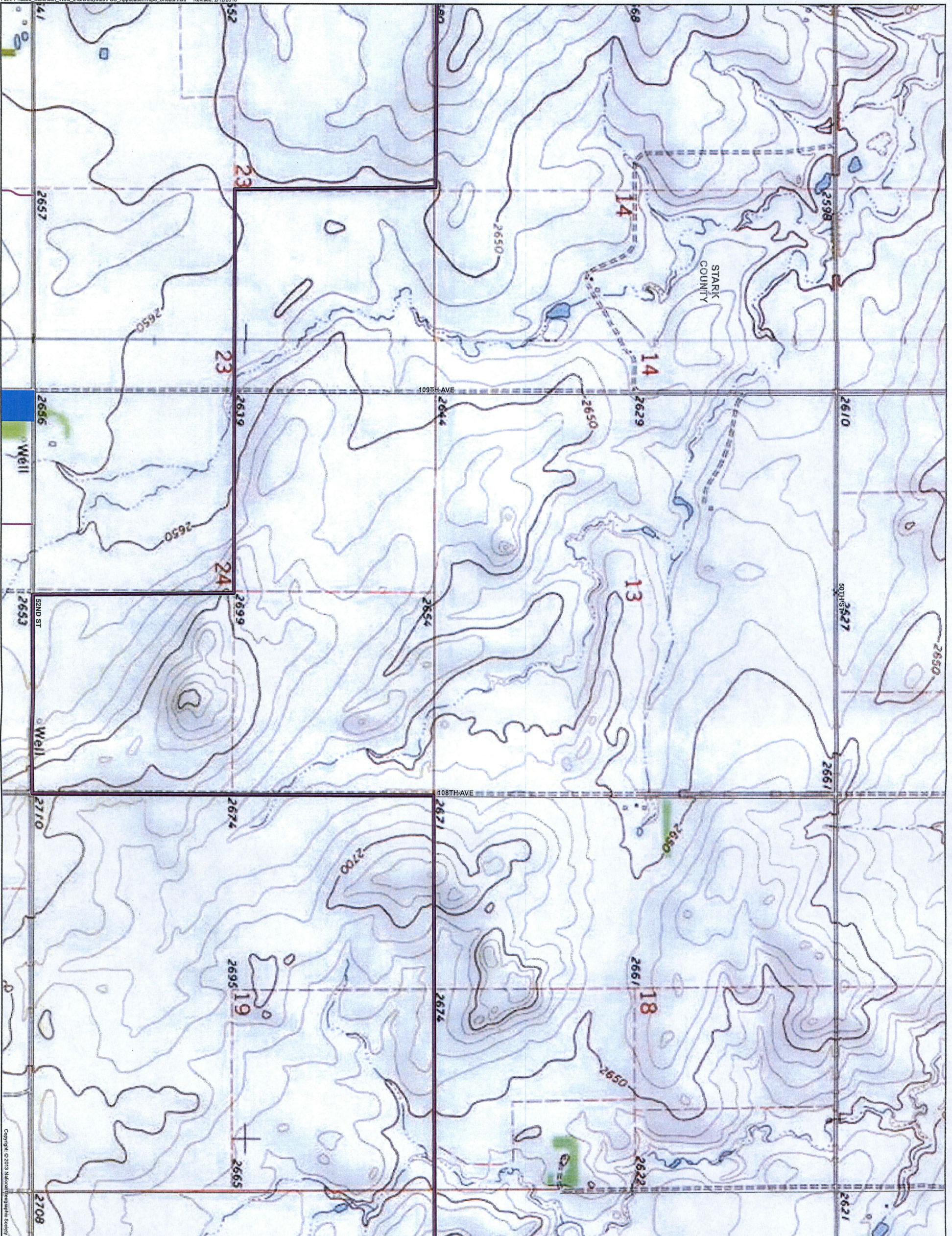


Figure 3: Project Area (Topographical) - Sheet 7



Brady Wind Energy Center

Stark County, ND

Legend

- Proposed Project Features**
- ▲ Permanent Met Tower
 - ▲ Temporary Met Tower
 - Proposed Turbine (10/30/15)
 - Alternative Turbine (10/30/15)
 - Collection System (10/30/15)
 - Service Roads (10/30/15)
 - Project Boundary (10/21/15)
 - ▭ Laydown
 - ▨ Temporary Turbine Storage Area
 - O&M Building
 - Substation
- *USGS Topo

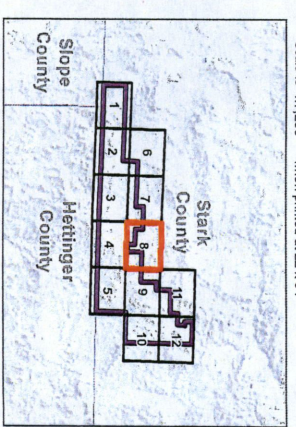
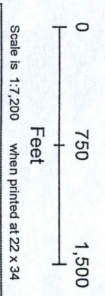
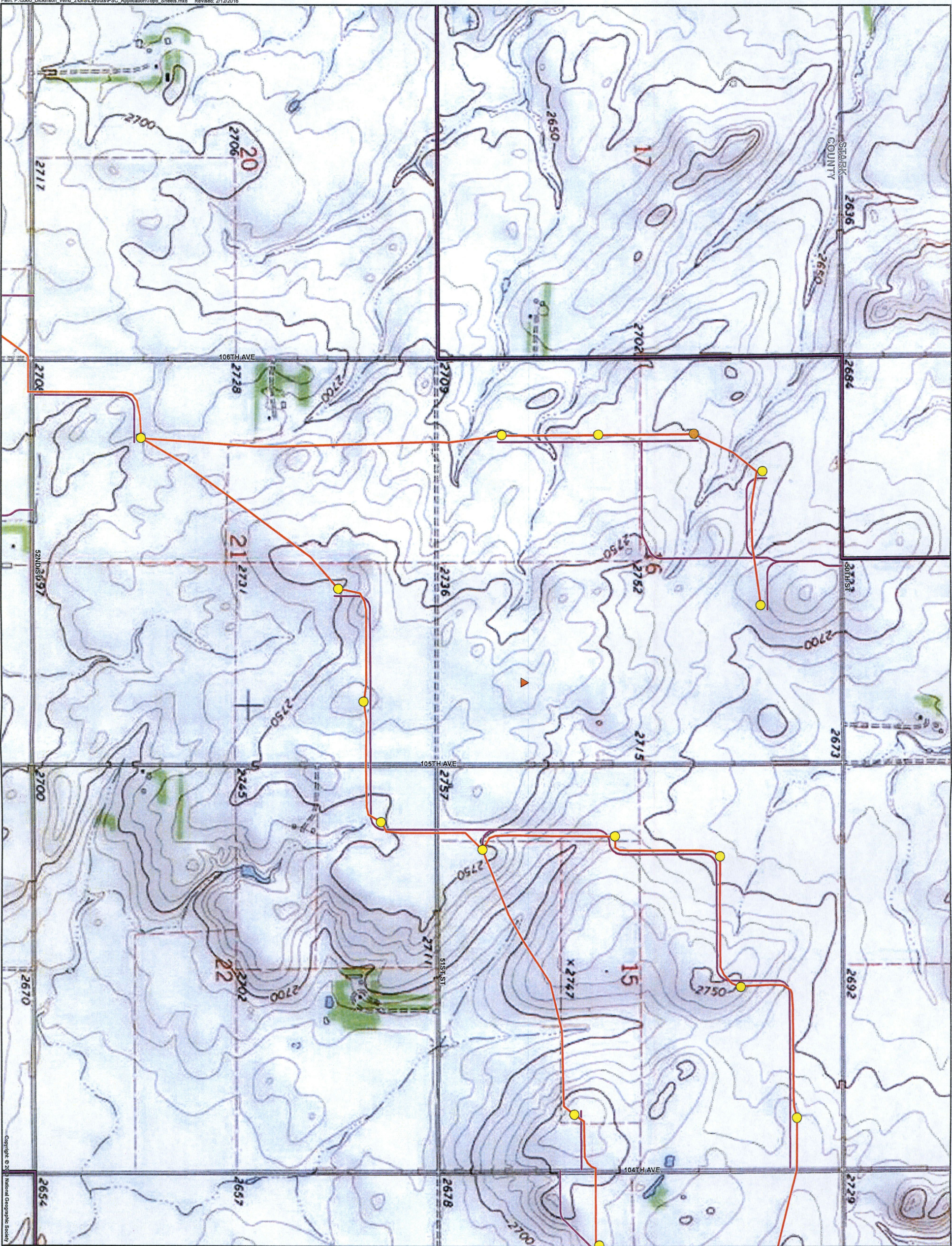


Figure 3: Project Area (Topographical) - Sheet 8



Brady Wind Energy Center

Stark County, ND

Legend

- Proposed Project Features**
- ▲ Permanent Met Tower
 - ▲ Temporary Met Tower
 - Proposed Turbine (10/30/15)
 - Alternative Turbine (10/30/15)
 - Collection System (10/30/15)
 - Service Roads (10/30/15)
 - Project Boundary (10/21/15)
 - ▭ Laydown
 - ▨ Temporary Turbine Storage Area
 - O&M Building
 - Substation
- *USGS Topo

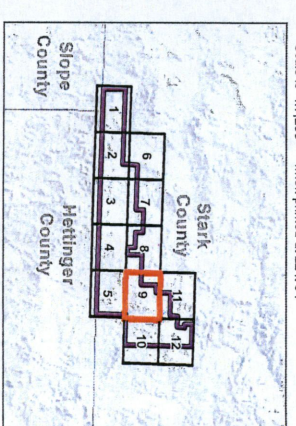
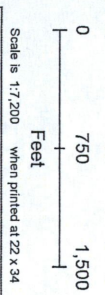
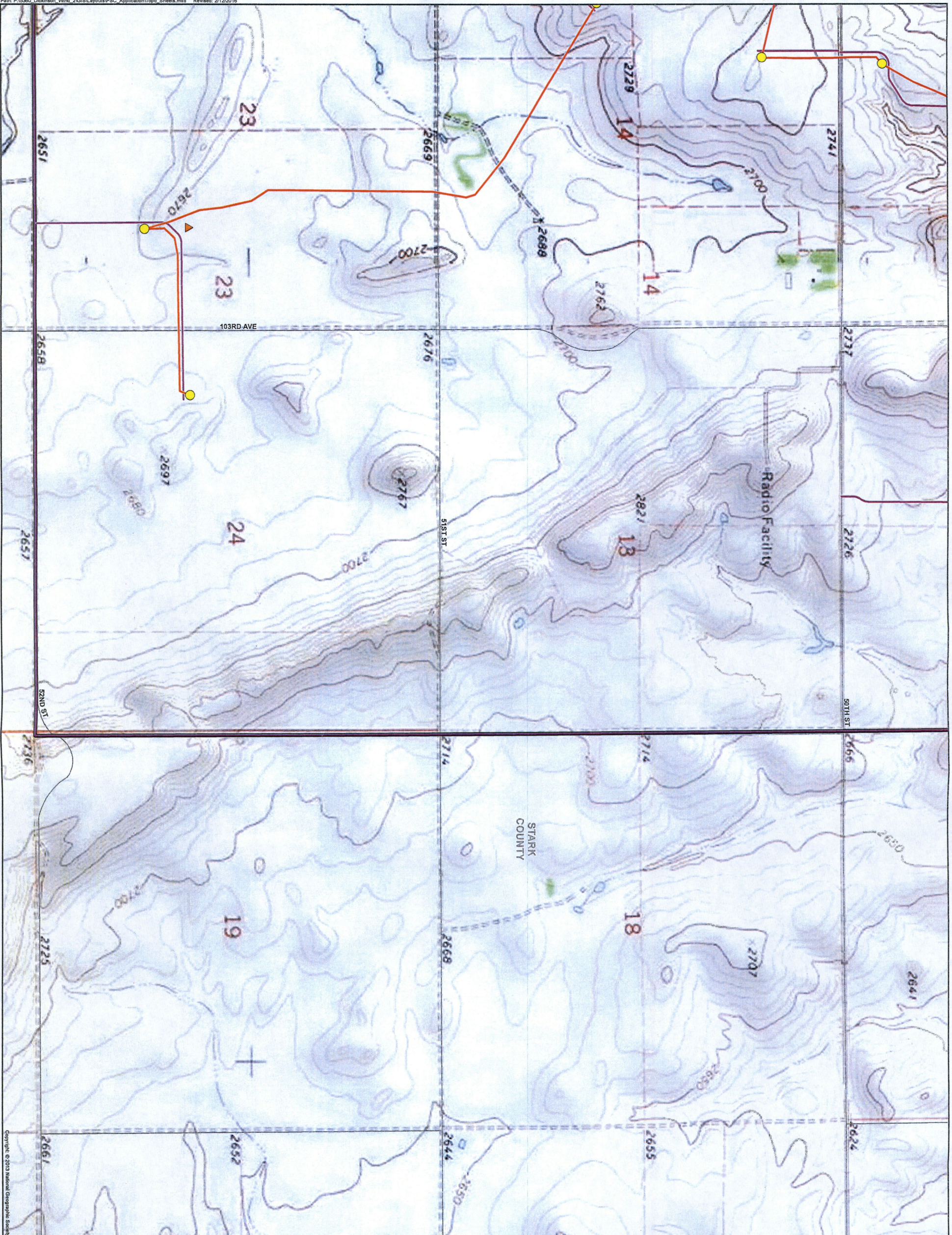


Figure 3: Project Area (Topographical) - Sheet 9



Brady Wind Energy Center

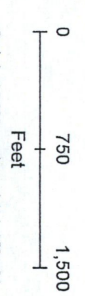
Stark County, ND

Legend

Proposed Project Features

- Permanent Met Tower
- Temporary Met Tower
- Proposed Turbine (10/30/15)
- Alternative Turbine (10/30/15)
- Collection System (10/30/15)
- Services Roads (10/30/15)
- Project Boundary (10/21/15)
- Laydown
- Temporary Turbine Storage Area
- O&M Building
- Substation

*USGS Topo



Scale is 1:7,200 when printed at 22 x 34

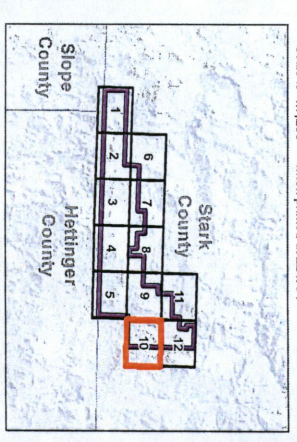
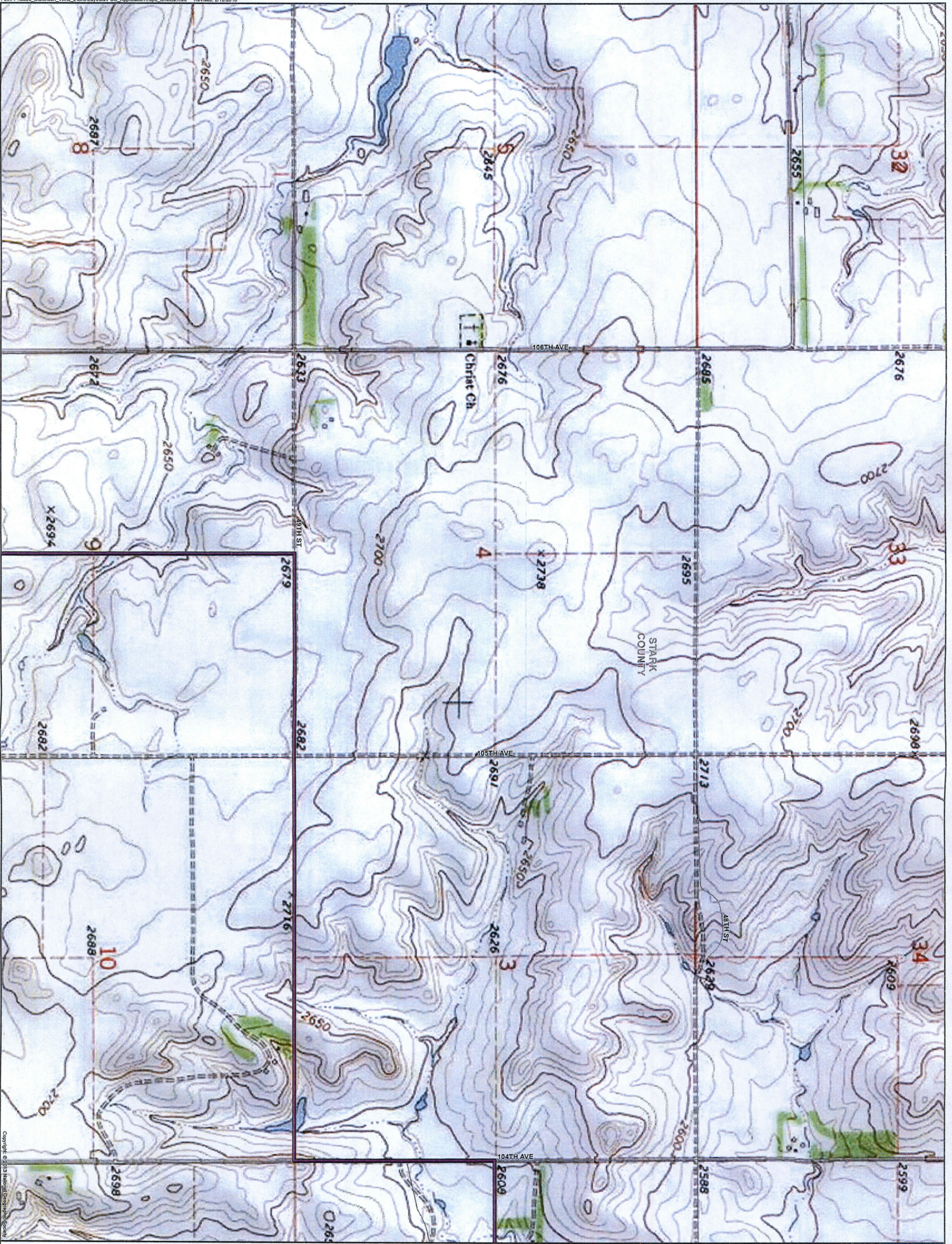


Figure 3: Project Area (Topographical) - Sheet 10



Brady Wind Energy Center

Stark County, ND

Legend

- Proposed Project Features**
- ▲ Permanent Met Tower
 - ▲ Temporary Met Tower
 - Proposed Turbine (10/30/15)
 - Alternative Turbine (10/30/15)
 - Collection System (10/30/15)
 - Service Roads (10/30/15)
 - Project Boundary (10/21/15)
 - ▭ Laydown
 - ▨ Temporary Turbine Storage Area
 - O&M Building
 - Substation
- USGS Topo

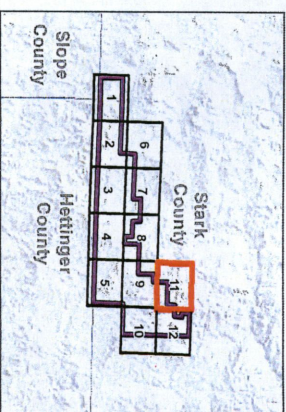
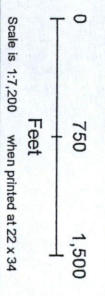
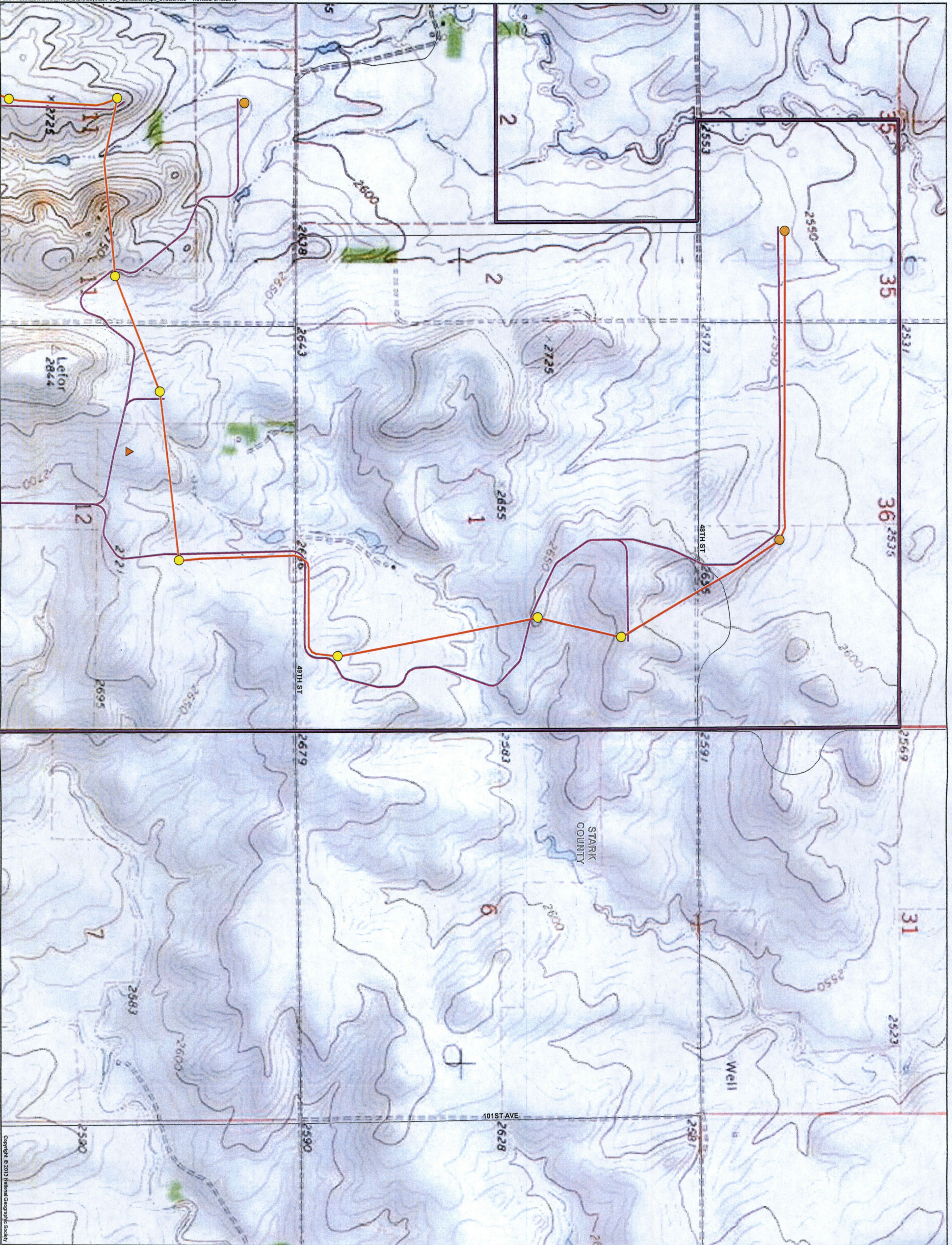


Figure 3: Project Area (Topographical) - Sheet 11



Brady Wind Energy Center

Stark County, ND

Legend

Proposed Project Features

- Permanent Met Tower
- Temporary Met Tower
- Proposed Turbine (10/30/15)
- Alternative Turbine (10/30/15)
- Collection System (10/30/15)
- Service Roads (10/30/15)
- Project Boundary (10/21/15)
- Laydown
- Temporary Turbine Storage Area
- O&M Building
- Substation
- USGS Topo

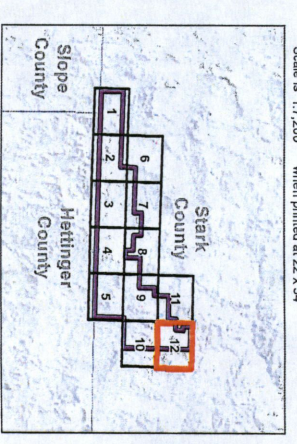
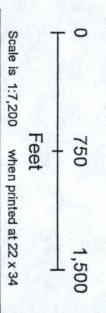


Figure 3: Project Area (Topographical) - Sheet 12