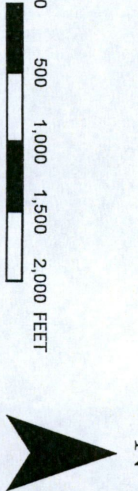


NEXTERA ENERGY
 RESOURCES, LLC
 BRADY WIND PROJECT
 STARK COUNTY
 NORTH DAKOTA
 JANUARY 2016

FIGURE 2
 SHEET 1
 EXPECTED SHADOW FLICKER
 IMPACT AREAS (SCENARIO A --
 PRIMARY TURBINES ONLY)

- Proposed Turbine Array (11/6/2015)
- GE Xie 1.715-103 Turbine
 - GE Xie 1.79-100 Turbine
- Shadow Flicker (hours per year)
- 0 - 15
 - >15 - 30
 - >30 - 50
 - >50 - 100
 - >100 - 200
 - >200
- Receptors
- Occupied
 - Unoccupied
- 30 hours per year limit



NEXTERA ENERGY
 RESOURCES, LLC
 BRADY WIND PROJECT
 STARK COUNTY
 NORTH DAKOTA

FIGURE 2
 SHEET 2
 EXPECTED SHADOW FLICKER
 IMPACT AREAS (SCENARIO A –
 PRIMARY TURBINES ONLY)

JANUARY 2016

Proposed Turbine Array (11/6/2015)

- GE Xie 1.715-103 Turbine
- GE Xie 1.79-100 Turbine

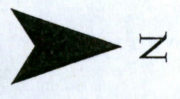
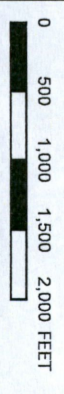
Shadow Flicker (hours per year)

- 0 - 15
- >15 - 30
- >30 - 50
- >50 - 100
- >100 - 200
- >200

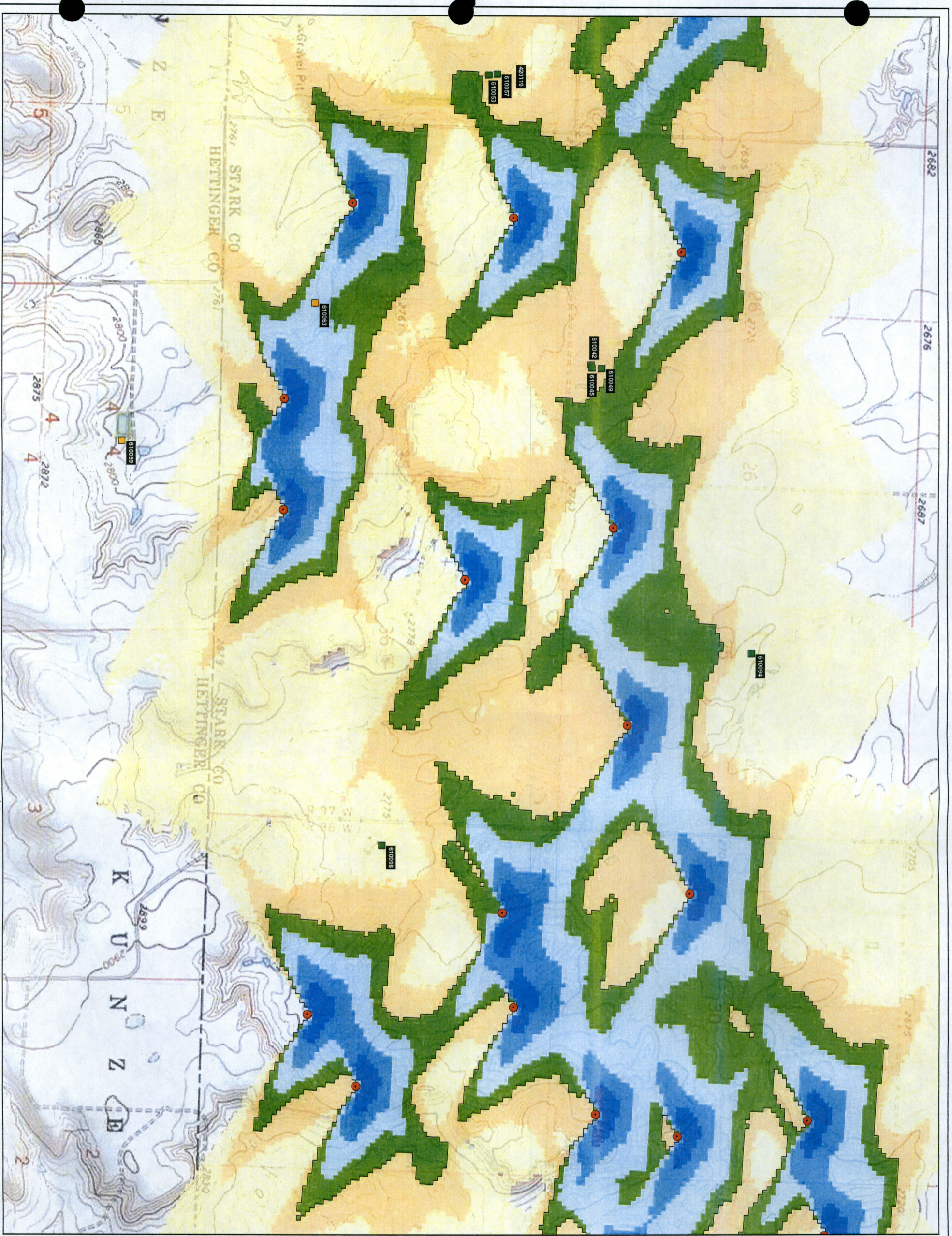
30 hours per year limit

Receptors

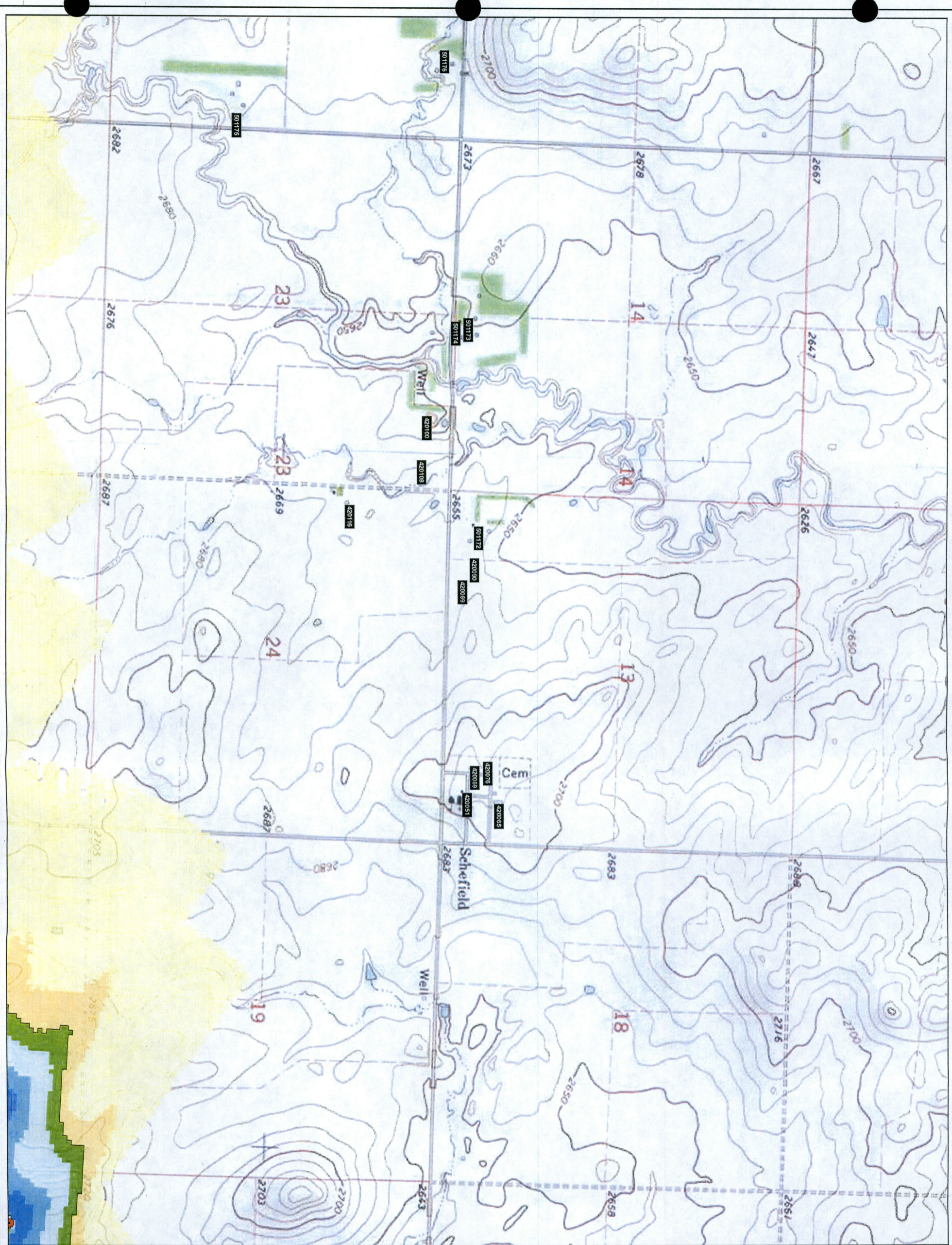
- Occupied
- Unoccupied



REFERENCE MAP



Document: 10001_11/16/15_BradY_Wind_Scenario_A_11/6/2015_Turbine_Location_11/16/2015.dwg



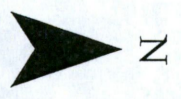
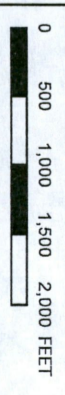
NEXTERA ENERGY
 RESOURCES, LLC
 BRADY WIND PROJECT
 STARK COUNTY
 NORTH DAKOTA
 FIGURE 2
 SHEET 6
 EXPECTED SHADOW FLICKER
 IMPACT AREAS (SCENARIO A –
 PRIMARY TURBINES ONLY)
 JANUARY 2016

Proposed Turbine Array (11/6/2015)

- GE Xie 1.715-103 Turbine
- GE Xie 1.79-100 Turbine

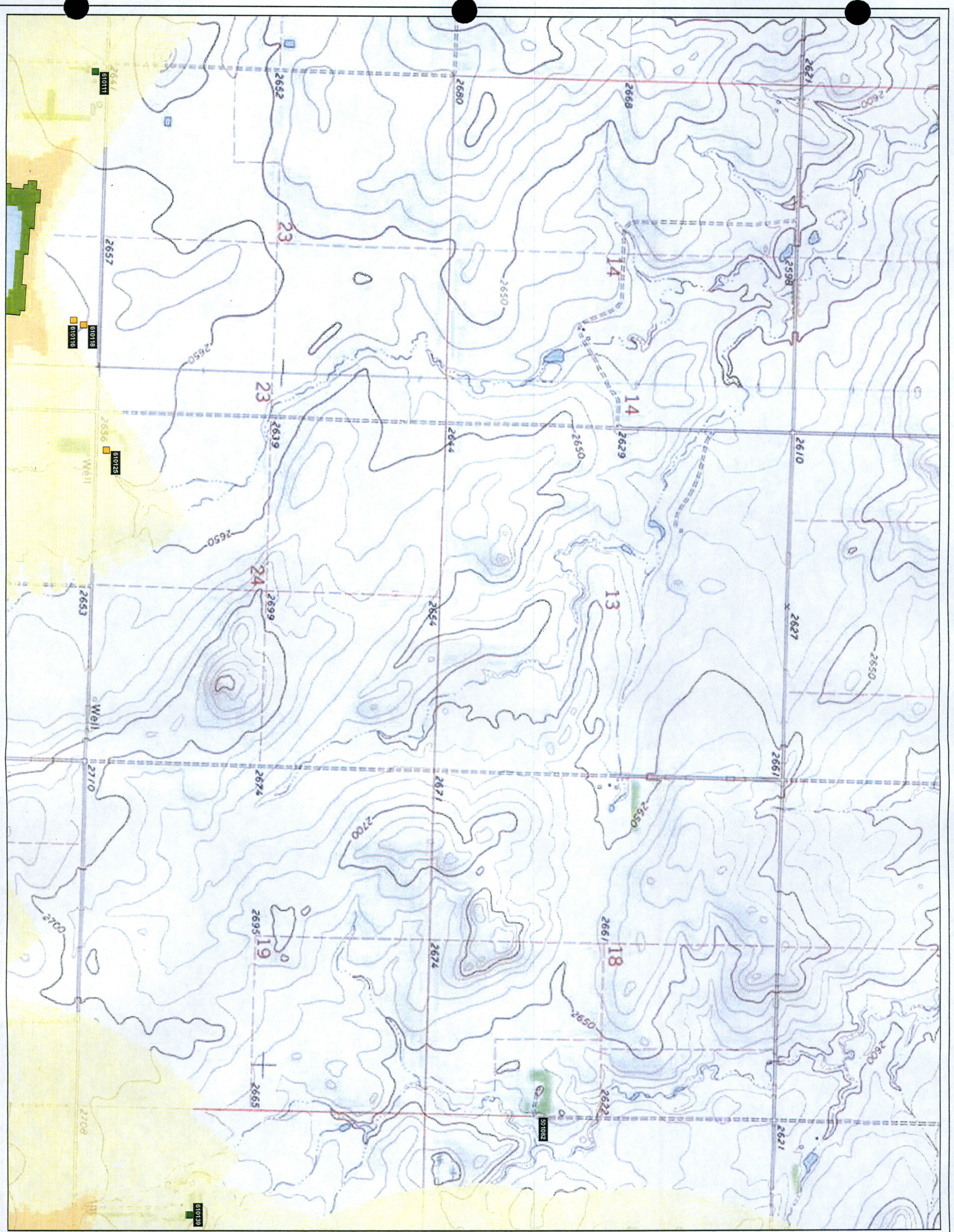
Shadow Flicker (hours per year)

- 0 - 15
 - >15 - 30
 - >30 - 50
 - >50 - 100
 - >100 - 200
 - >200
- 30 hours per year limit
 ■ Occupied
 ■ Unoccupied



REFERENCE MAP





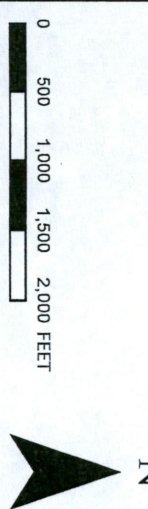
NEXTERA ENERGY
 RESOURCES, LLC
 BRADY WIND PROJECT
 STARK COUNTY
 NORTH DAKOTA

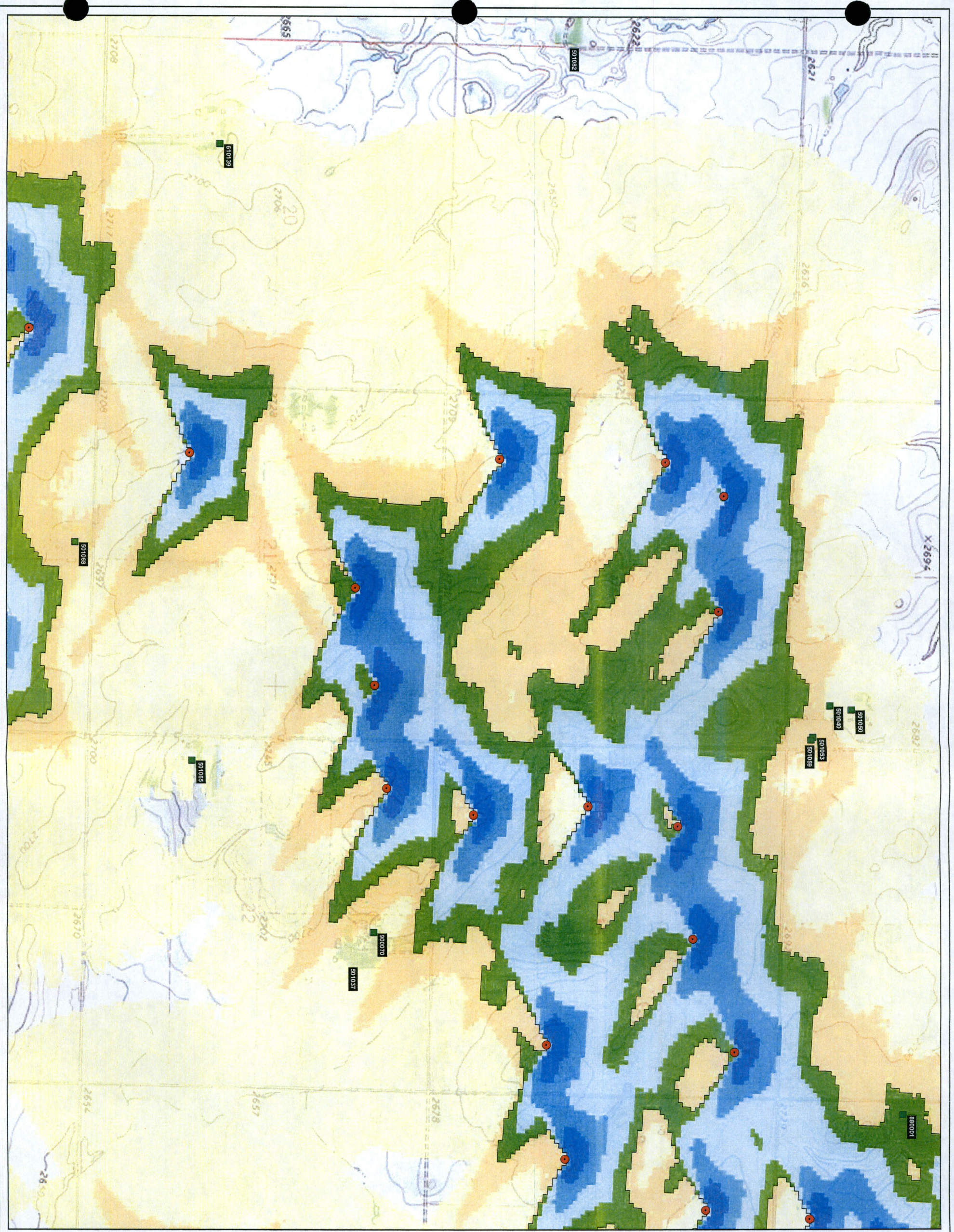
FIGURE 2
 SHEET 8

EXPECTED SHADOW FLICKER
 IMPACT AREAS (SCENARIO A –
 PRIMARY TURBINES ONLY)

JANUARY 2016

- Proposed Turbine Array (11/6/2015)
- GE Xie 1.715-103 Turbine
 - GE Xie 1.79-100 Turbine
- Shadow Flicker (hours per year)
- 0 - 15
 - >15 - 30
 - >30 - 50
 - >50 - 100
 - >100 - 200
 - >200
- 30 hours per year limit
- Receptors
- Occupied
 - Unoccupied





NEXTERA ENERGY
 RESOURCES, LLC
 BRADY WIND PROJECT
 STARK COUNTY
 NORTH DAKOTA

FIGURE 2
 SHEET 9
 EXPECTED SHADOW FLICKER
 IMPACT AREAS (SCENARIO A –
 PRIMARY TURBINES ONLY)
 JANUARY 2016

Proposed Turbine Array (11/6/2015)

- GE Xle 1.715-103 Turbine
- GE Xle 1.79-100 Turbine

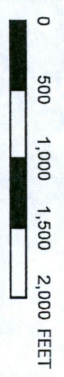
Shadow Flicker (hours per year)

- 0 - 15
- >15 - 30
- >30 - 50
- >50 - 100
- >100 - 200
- >200

30 hours per year limit

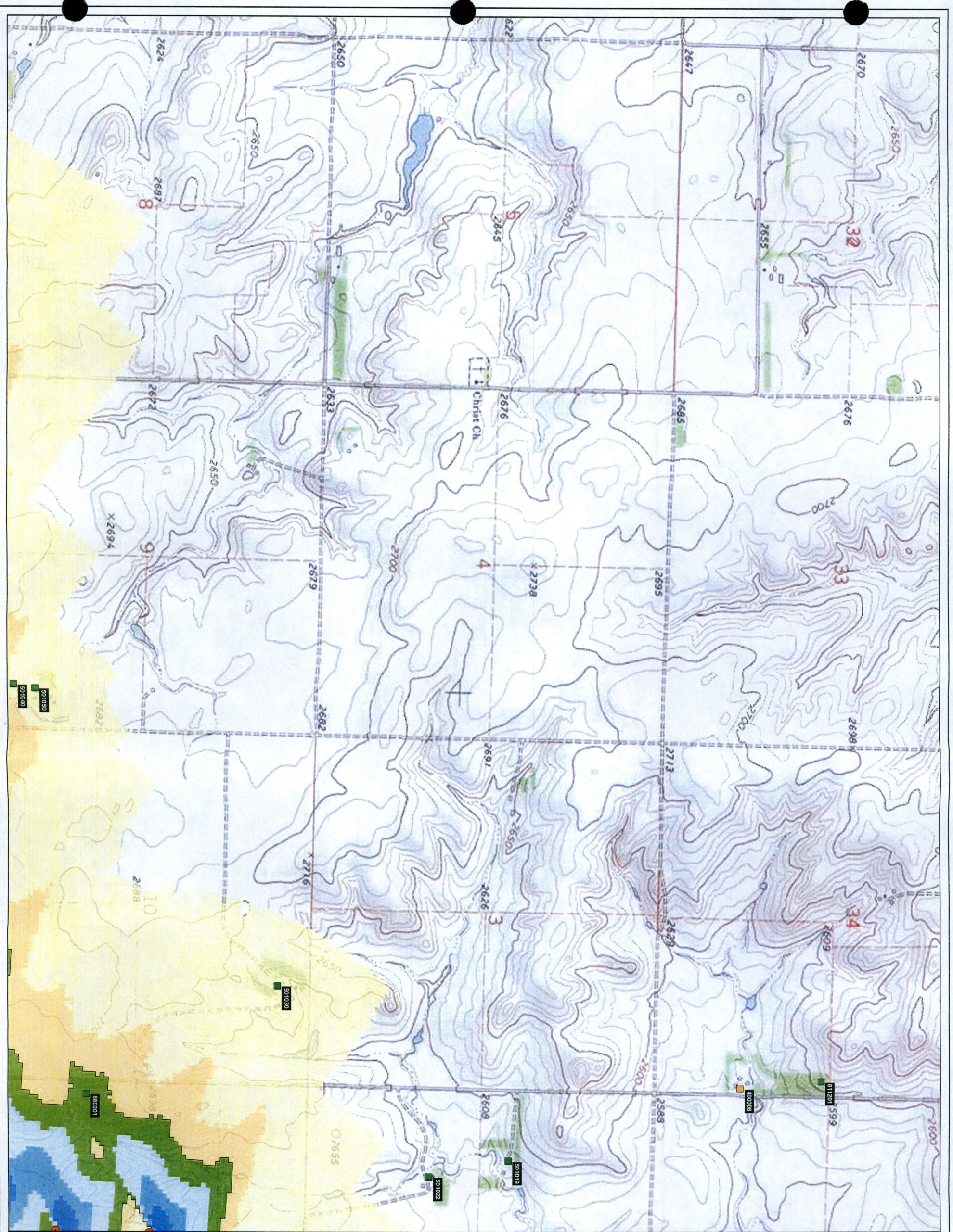
Receptors

- Occupied
- Unoccupied



REFERENCE MAP





NEXTERA ENERGY
 RESOURCES, LLC
 BRADY WIND PROJECT
 STARK COUNTY
 NORTH DAKOTA
 FIGURE 2
 SHEET 11
 EXPECTED SHADOW FLICKER
 IMPACT AREAS (SCENARIO A –
 PRIMARY TURBINES ONLY)
 JANUARY 2016

Proposed Turbine Array (11/6/2015)

- GE Xle 1.715-103 Turbine
- GE Xle 1.79-100 Turbine

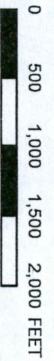
Shadow Flicker (hours per year)

- 0 - 15
- >15 - 30
- >30 - 50
- >50 - 100
- >100 - 200
- >200

30 hours per year limit

Receptors

- Occupied
- Unoccupied



REFERENCE MAP



