

Brady Wind Energy Center

Stark County, ND

Legend

Proposed Project Features

- ▲ Permanent Met Tower
- ▲ Temporary Met Tower
- Proposed Turbine (11/06/15)
- Alternative Turbine (11/06/15)
- Alternative Turbine (11/06/15)
- Alternative Turbine (11/06/15)
- Service Roads (02/17/16)
- Project Boundary (10/21/15)
- Laydown
- Temporary Turbine Storage Area
- O&M Building
- Substation
- USGS Topo



Scale is 1:12,250 when printed at 22 x 34

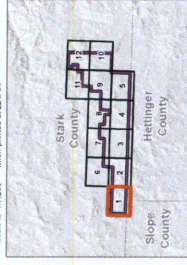


Figure 3: Project Area (Topographical) - Sheet 1

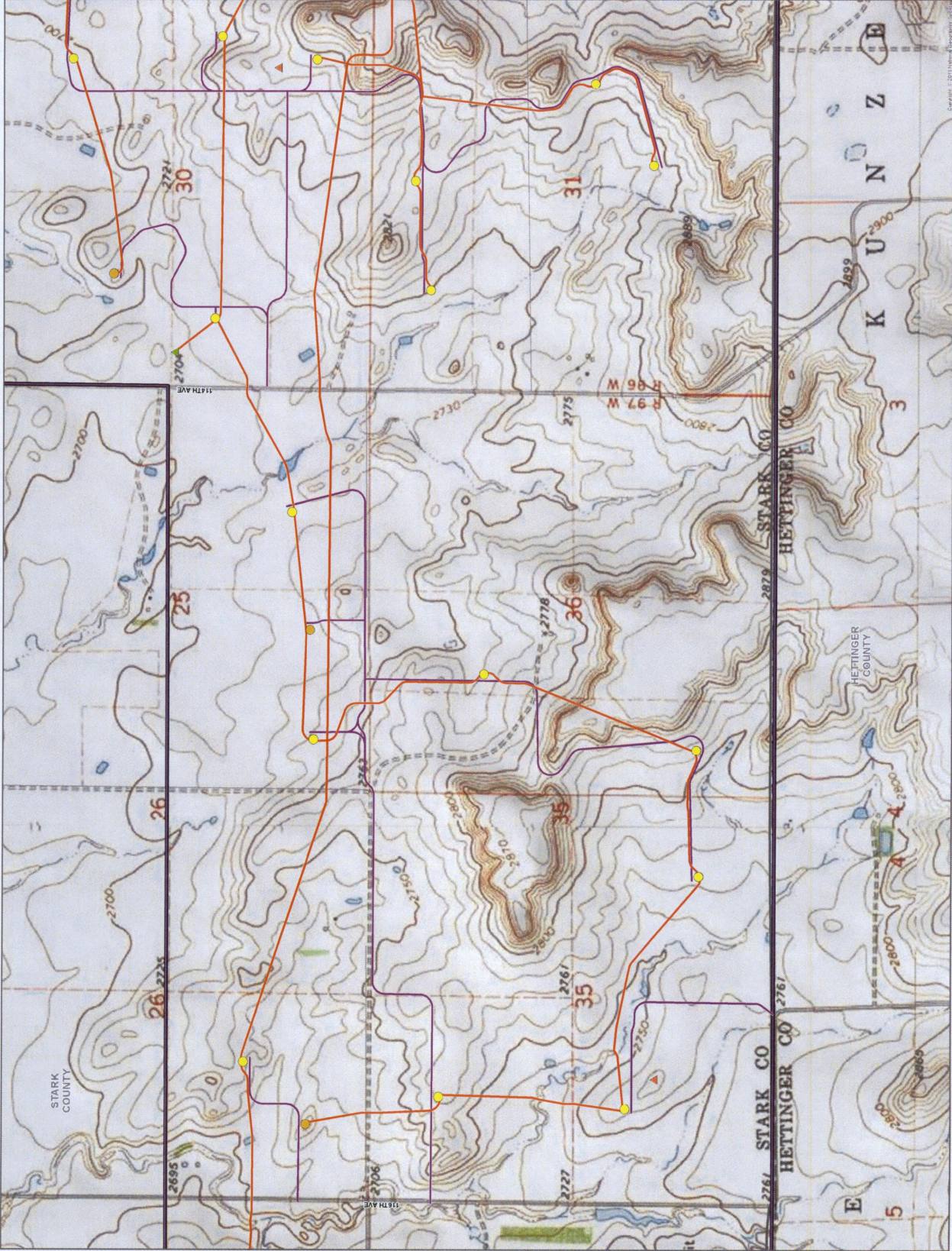
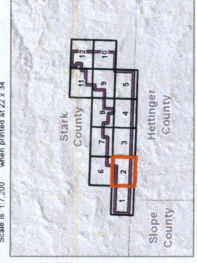
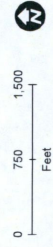
Brady Wind Energy Center

Stark County, ND

Legend

Proposed Project Features

- ▲ Permanent Met Tower
- ▲ Temporary Met Tower
- Proposed Turbine (11/06/15)
- Alternative Turbine (11/06/15)
- Alternative Turbine (02/03/16)
- Collection System (02/03/16)
- Service Roads (02/17/16)
- Project Boundary (10/21/15)
- ▭ Laydown
- ▭ Temporary Turbine Storage Area
- ▭ O&M Building
- ▭ Substation
- USGS Topo



Brady Wind Energy Center

Stark County, ND

Legend

Proposed Project Features

- ▲ Permanent Met Tower
- ▲ Temporary Met Tower
- Proposed Turbine (11/06/15)
- Alternative Turbine (11/06/15)
- Collection System (02/03/16)
- Service Roads (02/17/16)
- ▭ Project Boundary (10/21/15)
- ▨ Laydown
- ▧ Temporary Turbine Storage Area
- O&M Building
- Substation
- USGS Topo



Scale: 1:12,250 (when printed at 22 x 34)

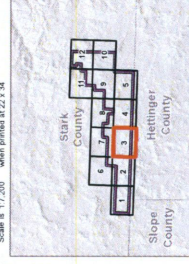


Figure 3: Project Area (Topographical) - Sheet 3

Brady Wind Energy Center

Stark County, ND

Legend

Proposed Project Features

- ▲ Permanent Met Tower
- ▲ Temporary Met Tower
- Proposed Turbine (11/06/15)
- Alternative Turbine (11/06/15)
- Alternative Turbine (02/03/16)
- Service Roads (02/17/16)
- Project Boundary (10/21/15)
- ▭ Laydown
- ▭ Temporary Turbine Storage Area
- ▭ O&M Building
- ▭ Substation
- USGS Topo



Scale is 1:12,250 when printed at 21" x 34"

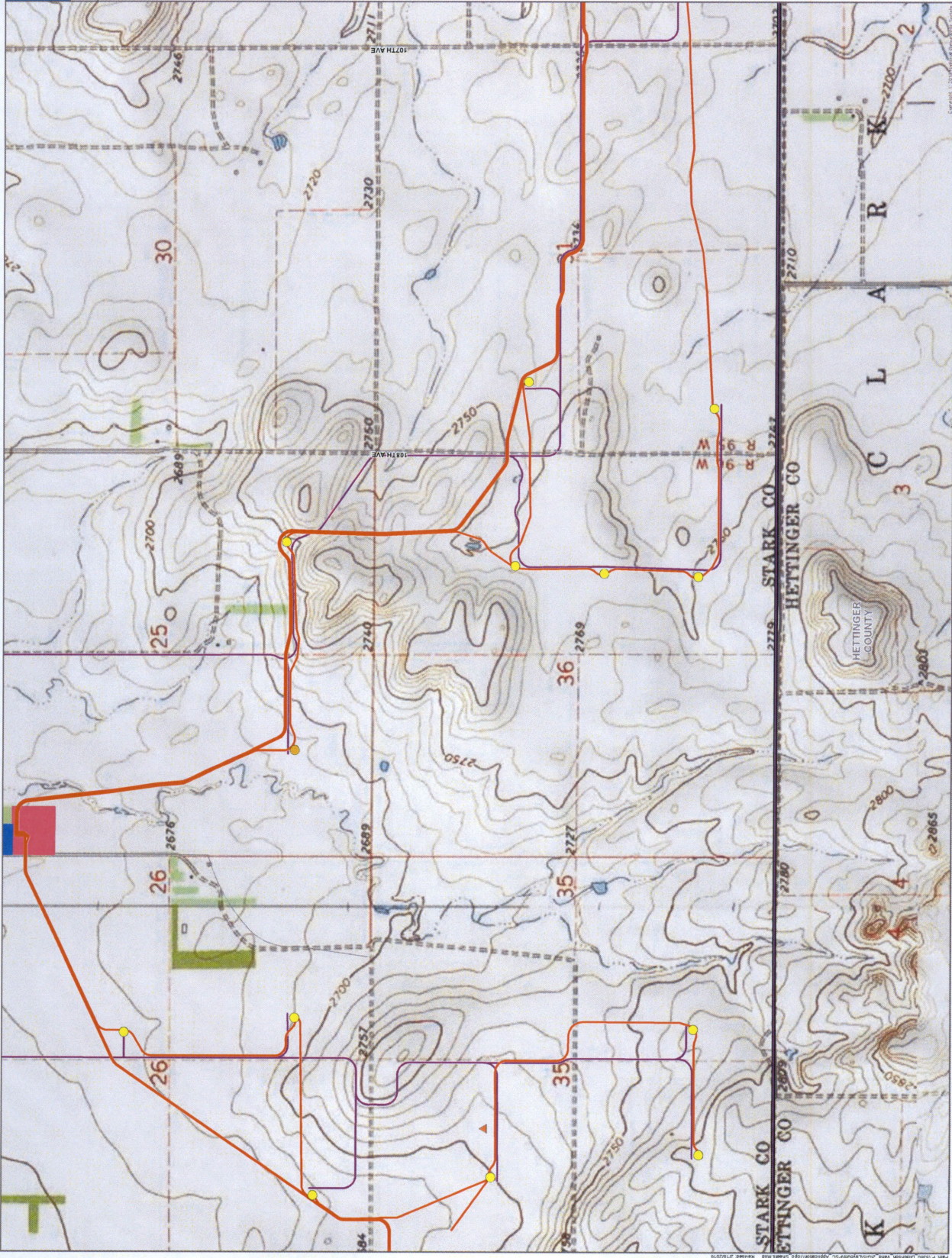
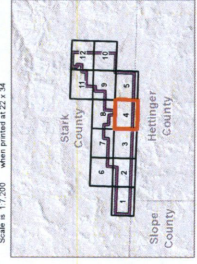


Figure 3: Project Area (Topographical) - Sheet 4

Brady Wind Energy Center

Stark County, ND

Legend

Proposed Project Features

- ▲ Permanent Met Tower
- ▲ Temporary Met Tower
- Proposed Turbine (11/06/15)
- Alternative Turbine (11/06/15)
- Alternative Turbine (02/03/16)
- Service Roads (02/17/16)
- Project Boundary (10/21/15)
- ▭ Laydown
- ▭ Temporary Turbine Storage Area
- ▭ O&M Building
- ▭ Substation
- USGS Topo



Scale is 1:12,250 - Water printed at 22.34

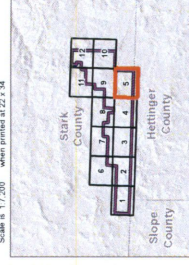


Figure 3: Project Area (Topographical) - Sheet 5

Brady Wind Energy Center

Stark County, ND

Legend

Proposed Project Features

- ▲ Permanent Met Tower
- ▲ Temporary Met Tower
- Proposed Turbine (11/06/15)
- Alternative Turbine (11/06/15)
- Collection System (02/03/16)
- Service Roads (02/17/16)
- ▭ Project Boundary (10/21/15)
- ▨ Laydown
- ▨ Temporary Turbine Storage Area
- ▨ O&M Building
- ▨ Substation
- USGS Topo

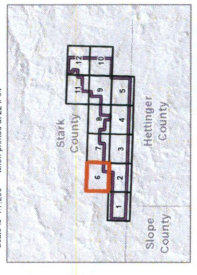
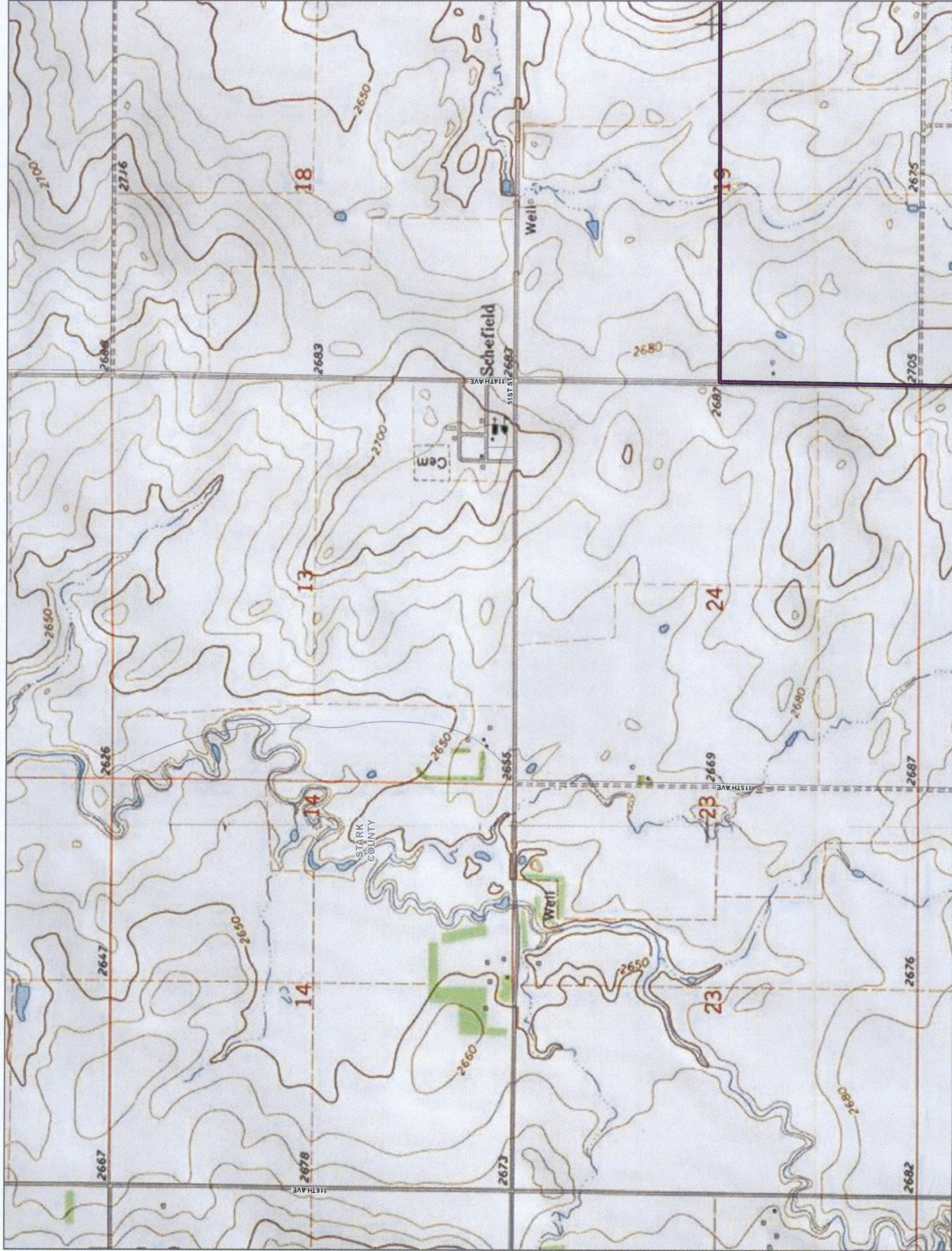


Figure 3: Project Area (Topographical) - Sheet 6

Brady Wind Energy Center

Stark County, ND

Legend

- Proposed Project Features**
- ▲ Permanent Met Tower
 - ▲ Temporary Met Tower
 - Proposed Turbine (11/06/15)
 - Alternative Turbine (11/06/15)
 - Collection System (02/03/16)
 - Service Roads (02/17/16)
 - Project Boundary (10/21/15)
 - ▭ Laydown
 - ▭ Temporary Turbine Storage Area
 - ▭ O&M Building
 - ▭ Substation
- *USGS Topo



Scale is 1:12,000. Date printed is 2/23/14.

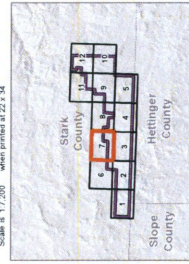


Figure 3: Project Area (Topographical) - Sheet 7

Brady Wind Energy Center

Stark County, ND

Legend

Proposed Project Features

- ▲ Permanent Met Tower
- ▲ Temporary Met Tower
- Proposed Turbine (11/06/15)
- Alternative Turbine (11/06/15)
- Collection System (02/03/16)
- Service Roads (02/17/16)
- ▭ Project Boundary (10/21/15)
- ▨ Laydown
- ▨ Temporary Turbine Storage Area
- ▨ O&M Building
- ▨ Substation
- USGS Topo



Scale is 1:12,200 when printed at 22 x 34

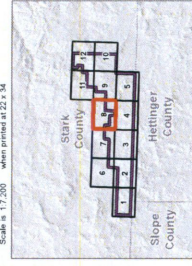


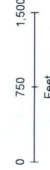
Figure 3: Project Area (Topographical) - Sheet 8

Brady Wind Energy Center

Stark County, ND

Legend

- Proposed Project Features**
- ▲ Permanent Met Tower
 - ▲ Temporary Met Tower
 - Proposed Turbine (1106/15)
 - Alternative Turbine (1106/15)
 - Collection System (02/03/16)
 - Service Roads (02/17/16)
 - ▭ Project Boundary (10/21/15)
 - ▨ Laydown
 - ▨ Temporary Turbine Storage Area
 - ▨ O&M Building
 - ▨ Substation
 - USGS Topo



Scale is 1:7,200 when printed at 22 x 34"

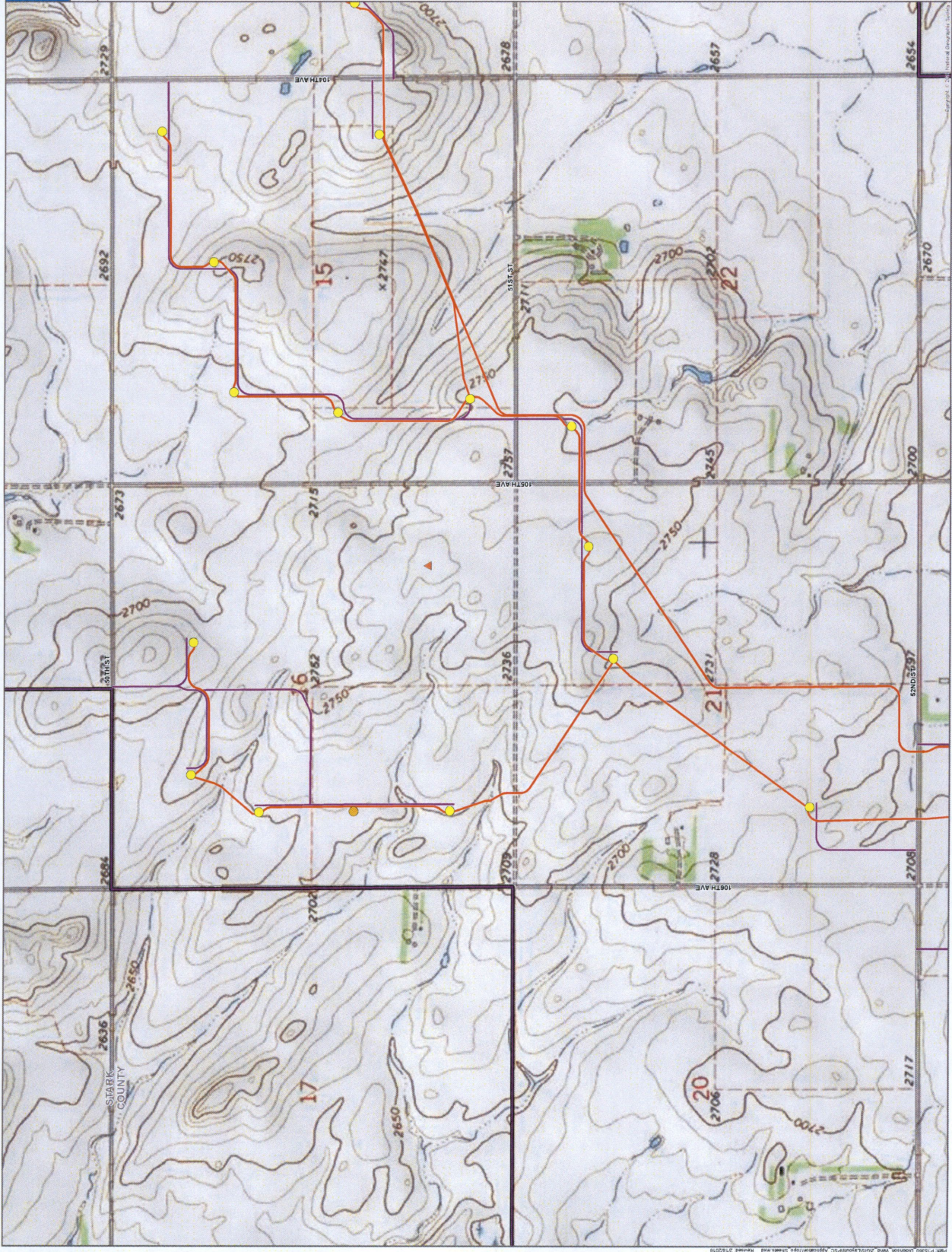
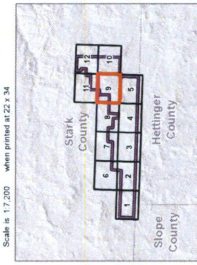


Figure 3: Project Area (Topographical) - Sheet 9

Brady Wind Energy Center

Stark County, ND

Legend

Proposed Project Features

- ▲ Permanent Met Tower
- ▲ Temporary Met Tower
- Proposed Turbine (11/06/15)
- Alternative Turbine (11/06/15)
- Collection System (02/03/16)
- Service Roads (02/17/16)
- ▭ Project Boundary (10/21/15)
- ▨ Laydown
- ▨ Temporary Turbine Storage Area
- ▨ O&M Building
- ▨ Substation
- USGS Topo

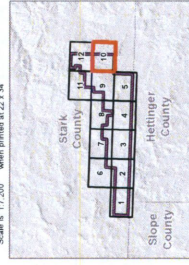


Figure 3: Project Area (Topographical) - Sheet 10

Brady Wind Energy Center

Stark County, ND

Legend

- Proposed Project Features**
- ▲ Permanent Met Tower
 - ▲ Temporary Met Tower
 - Proposed Turbine (11/06/15)
 - Alternative Turbine (11/06/15)
 - Collection System (02/03/16)
 - Service Roads (02/17/16)
 - Project Boundary (10/21/15)
 - ▭ Laydown
 - ▭ Temporary Turbine Storage Area
 - ▭ O&M Building
 - ▭ Substation
- USGS Topo



Scale is 1:12,200. North printed at 22 x 34.

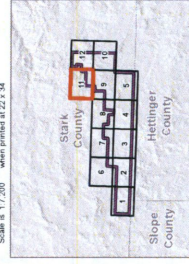


Figure 3: Project Area (Topographical) - Sheet 11

Brady Wind Energy Center

Stark County, ND

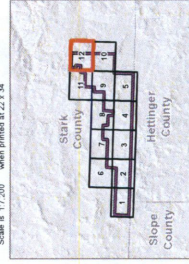
Legend

Proposed Project Features

- ▲ Permanent Met Tower
- ▲ Temporary Met Tower
- Proposed Turbine (1106/15)
- Alternative Turbine (1106/15)
- Collection System (02/03/15)
- Service Roads (02/17/15)
- ▭ Project Boundary (10/27/15)
- ▨ Laydown
- ▨ Temporary Turbine Storage Area
- ▨ O&M Building
- ▨ Substation
- USGS Topo



Scale is 1:17,200 when printed at 22 x 34



Copyright © 2011 National Geographic Society

Figure 3: Project Area (Topographical) - Sheet 12