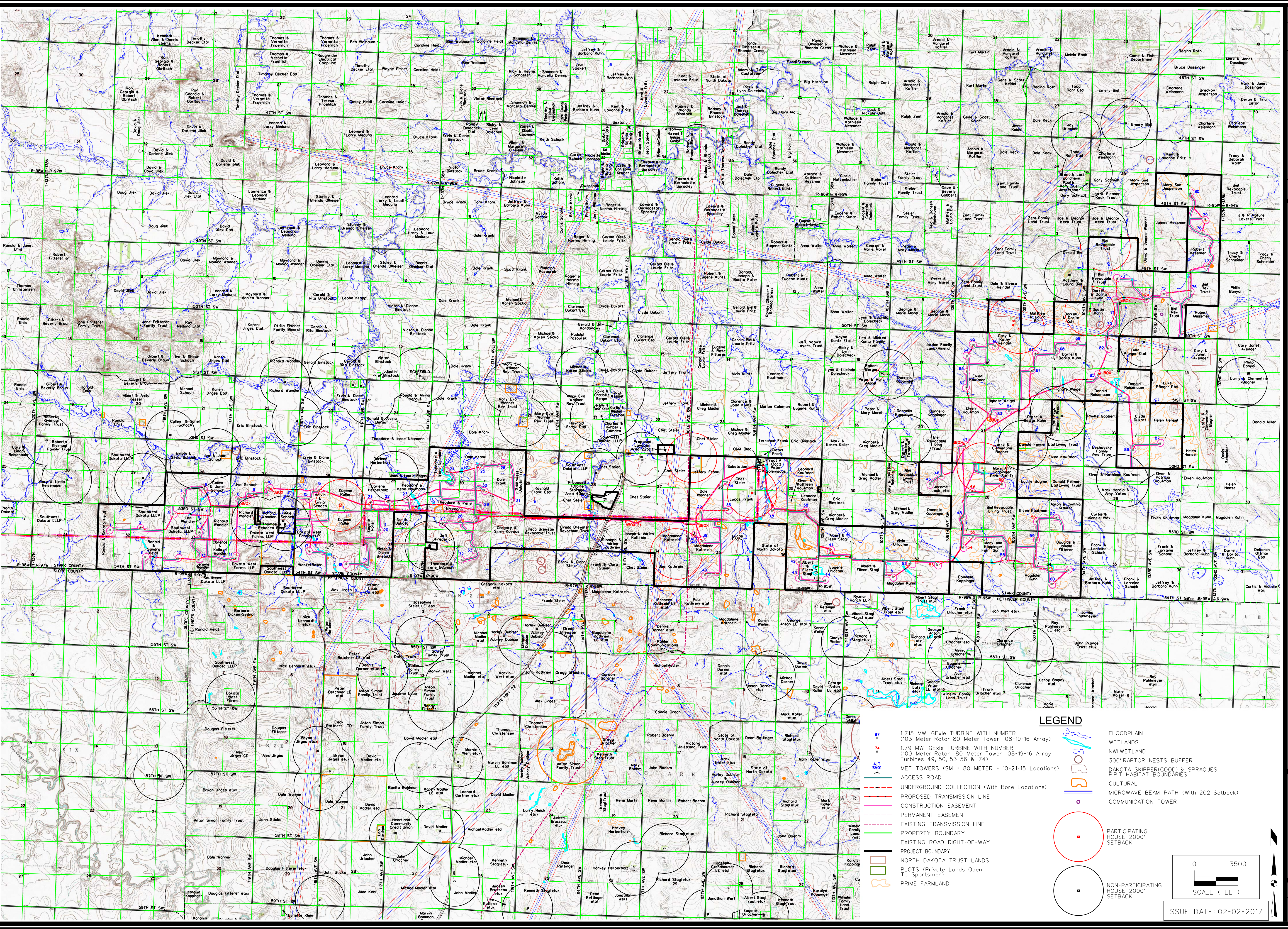


C:\USA_CADD_VB\Wind\Drivers\Color\ColorFiles\AsBuiltPlan110895.dwg
2/22/2017 5:22:04 AM
SNYDER 1:5000
D:\110895\Cadd\110895 - BRADY WIND AS-BUILT TURBINE SITE PLAN.dgn



LEGEND

- 87 1.715 MW GE G1e TURBINE WITH NUMBER (103 Meter Rotor 80 Meter Tower 08-19-16 Array)
- 74 1.78 MW GE G1e TURBINE WITH NUMBER (100 Meter Rotor 80 Meter Tower 08-19-16 Array Turbines 49, 50, 53-56 & 74)
- 80 300' RAPTOR NESTS BUFFER
- 81 MET TOWERS (SM = 80 METER - 10-21-15 Locations)
- 82 ACCESS ROAD
- 83 UNDERGROUND COLLECTION (With Bore Locations)
- 84 PROPOSED TRANSMISSION LINE
- 85 CONSTRUCTION EASEMENT
- 86 PERMANENT EASEMENT
- 87 EXISTING TRANSMISSION LINE
- 88 PROPERTY BOUNDARY
- 89 EXISTING ROAD RIGHT-OF-WAY
- 90 PROJECT BOUNDARY
- 91 NORTH DAKOTA TRUST LANDS
- 92 PLOTS (Private Lands Open To Sportsmen)
- 93 PRIME FARMLAND
- 94 FLOODPLAIN
- 95 WETLANDS
- 96 NW WETLAND
- 97 300' RAPTOR NESTS BUFFER
- 98 DAKOTA SKIPPER(COOD) & SPRAGUES PIPIT HABITAT BOUNDARIES
- 99 CULTURAL
- 100 MICROWAVE BEAM PATH (With 202' Setback)
- 101 COMMUNICATION TOWER
- 102 PARTICIPATING HOUSE 2000' SETBACK
- 103 NON-PARTICIPATING HOUSE 2000' SETBACK

0 3500
SCALE (FEET)

ISSUE DATE: 02-02-2017

NEXTERA ENERGY - BRADY WIND, LLC

AS-BUILT TURBINE SITE PLAN

SNYDER & ASSOCIATES, INC.

1751 MADISON AVENUE
COUNCIL BLUFFS, IA 51503
712-322-3202 | www.snyder-associates.com

Project No: 1140895
Sheet 1 of 1

MARK	REVISION	DATE	BY
Engineer: SCH	Checked By: MGG	Scale: 1" = 3500'	
Technician: DW	Date: 07-07-15	Field Bk:	

Project No: 1140895
Sheet 1 of 1