



**ONEOK
PARTNERS**

**ONEOK BAKKEN PIPELINE, L.L.C.
Garden Creek to Riverview NGL Pipeline**

Docket No. PU-11-66

North Dakota Public Service Commission

Request for Amendment to Certificate No. 122 and Permit No. 131

November 2015

Prepared by:



TABLE OF CONTENTS

ACRONYMS AND ABBREVIATIONS	iii
LIST OF EXHIBITS	iv
INTRODUCTION.....	1
1.0 DESCRIPTION OF FACILITY IMPROVEMENTS	2
1.1 PREFERRED LOCATION OF FACILITY	2
1.2 DESCRIPTION OF SITE PREPARATION, CONSTRUCTION, AND RECLAMATION PROCEDURES.....	2
1.3 LANDOWNER NOTIFICATION, LAND ACQUISITION, AND COMPENSATION	2
2.0 ALTERNATIVES	3
2.1 ALTERNATIVES TO THE PROPOSED FACILITY	3
2.1.1 No Action Alternative.....	3
2.1.2 Truck Transportation Alternative.....	4
2.1.3 Rail Transportation Alternative.....	4
2.2 PUMP STATION SITE ALTERNATIVES.....	5
3.0 ENVIRONMENTAL STUDIES.....	6
3.1 CULTURAL RESOURCE INVENTORY	6
3.2 NATURAL RESOURCE INVENTORY.....	6
3.2.1 Migratory Bird Treaty Act.....	7
3.2.2 Bald and Golden Eagle Protection Act	7
3.3 TREE/SAPLING/SHRUB INVENTORY	8
3.4 NOXIOUS WEEDS INVENTORY.....	8
4.0 AGENCY NOTIFICATIONS and PERMITTING	9
5.0 CRITERIA.....	10
5.1 EXCLUSION AREAS.....	10
5.2 AVOIDANCE AREAS	11
5.3 SELECTION CRITERIA	11
5.4 POLICY CRITERIA	12
6.0 MITIGATION MEASURES	13
7.0 QUALIFICATIONS OF PREPARERS	14

TABLES

Table 5.1-1	Exclusion Areas.....	10
Table 5.2-1	Avoidance Areas.....	11
Table 7.3-1	Selection Criteria	11

FIGURES

Figure 2.1.1-1	North Dakota NGL Production Forecast	3
----------------	--	---

ACRONYMS AND ABBREVIATIONS

BCC	Birds of Conservation Concern
BCR	Bird Conservation Regions
BGEPA	Bald and Golden Eagle Protection Act
bpd	barrels per day
DOT	U.S. Department of Transportation
FWS	U.S. Fish and Wildlife Service
HDD	horizontal directional drilling
ICBM	intercontinental ballistic missile
MBTA	Migratory Bird Treaty Act
MMb/d	million barrels per day
MMcf/d	million cubic feet per day
NDDA	North Dakota Department of Agriculture
NDGF	North Dakota Game and Fish Department
NDPSC	North Dakota Public Service Commission
NHI	Natural Heritage Inventory
OBPL	ONEOK Bakken Pipeline, L.L.C.
ORM	ONEOK Rockies Midstream, L.L.C.
Project	Spring Creek Pump Station
USNPS	U.S. National Park Service

LIST OF EXHIBITS

- Exhibit A: Engineering Documents
- Exhibit B: Project Maps
 - B.1 Project Overview Map
 - B.2 Avoidance and Exclusion Map
 - B.3 Selection Criteria (Other) Map
- Exhibit C: Environmental Survey Reports
 - C.1 Cultural Resources Report
 - C.2 Natural Resources Report

INTRODUCTION

ONEOK Bakken Pipeline, L.L.C. (OBPL), a wholly owned subsidiary of ONEOK Partners, L.P., owns and operates natural gas liquids (NGLs) assets in North Dakota. OBPL is proposing to construct the Spring Creek Pump Station (Project), a transmission facility improvement to their existing Garden Creek to Riverview NGL Pipeline. The Garden Creek to Riverview NGL Pipeline originates at the ONEOK Rockies Midstream, LLC (ORM) Garden Creek Gas Plants near Watford City and proceeds generally west and south through McKenzie County. The pipeline crosses the state line into Montana where it can deliver NGLs into the ORM Riverview Rail Facility near Sidney, Montana or continue southward on the pipeline. The Project will connect to the existing Garden Creek to Riverview NGL Pipeline in McKenzie County, North Dakota.

On September 7, 2011, the North Dakota Public Service Commission issued Findings of Fact, Conclusions of Law and Order granting Certificate of Corridor No. 122 and Route Permit No. 131 for the Garden Creek to Riverview NGL Pipeline project (PU-11-66). On December 2, 2011, the First Amended Certificate of Corridor Compatibility No. 122 and First Amended Route Permit No. 131 were issued; due to the Company's name change, the First Amended Certificate of Corridor No. 122 and First Amended Route Permit No. 131 were reissued to ORM on December 9, 2011 (Case No. PU-11-658). On August 12, 2013, ORM and OBPL submitted a joint application to transfer the First Reissued First Amended Certificate of Corridor Compatibility No. 122 and First Reissued First Amended Route Permit No. 131 to OBPL. On December 4, 2013, the Second Reissued First Amended Certificate of Corridor Compatibility No. 122 and Second Reissued First Amended Route Permit No. 131 were issued under Case No. PU-13-738 executing this transfer.

Since issuance of the Order, OBPL has determined, in accordance with OBPL's 10-year plan, a need for additional transportation capacity of products. OBPL hereby submits to the North Dakota Public Service Commission (NDPSC) documentation, in accordance with North Dakota Administrative Code § 69-06-05-02(3) and North Dakota Century Code § 49-22-03, requesting approval of OBPL's transmission facility improvements along the Garden Creek to Riverview NGL Pipeline to meet this need. As per OBPL's Certification Relating to Order Provisions, item #31, OBPL understands that written approval from the NDPSC is required prior to any modifications to the transmission facility.

Upon receipt of necessary approvals, OBPL will begin construction, which is anticipated to take approximately 4 to 6 months. Completion of the Project is desired by second quarter of 2016.

1.0 DESCRIPTION OF FACILITY IMPROVEMENTS

OBPL is proposing to modify their Garden Creek to Riverview NGL Pipeline by adding a pump station facility which will provide 25,000 barrels per day (bpd) additional capacity. The pump station will consist of three (3) 1500HP electrically driven pumps contained within a building (refer to Exhibit A for site plan). The fenceline of the property will encompass approximately 1.8 acres while the leased property is less than 5 acres. The pump station will not alter the maximum allowable operating pressure (MAOP) of the pipeline. OBPL will invest approximately \$8 million in North Dakota to develop this project.

1.1 PREFERRED LOCATION OF FACILITY

The proposed Project is located in the SW ¼ of Section 03, Township 148 North, Range 102 West, approximately 14.5 miles southwest of the City of Arnegard in McKenzie County, North Dakota (refer to Exhibit B.1). The pump station site boundary extends approximately 135 feet outside the Certificated Corridor No. 122, and is positioned within an approximately 5-acre parcel leased by OBPL.

1.2 DESCRIPTION OF SITE PREPARATION, CONSTRUCTION, AND RECLAMATION PROCEDURES

Construction techniques will be employed that minimize the area of ground disturbance, off-site deposition of sediments, and long-term impacts to agricultural production. OBPL will develop a series of plans as described in Section 6.0 to provide procedures to be followed during construction and through final stabilization of the pump station site. Additionally, OBPL will comply with applicable permit conditions and environmental, civil, or landowner agreements.

1.3 LANDOWNER NOTIFICATION, LAND ACQUISITION, AND COMPENSATION

Prior to conducting field surveys, OBPL reviewed courthouse records for the purpose of identifying current landowners of potential pump station sites. OBPL contacted landowners to introduce the Project and to obtain permission to conduct surveys. OBPL has negotiated a lease agreement with the affected landowner to give the company the right to construct, operate, and maintain the pump station within a specified portion of the landowner's property in return for monetary compensation. OBPL, at all times, negotiates in good faith, and the necessary lease conditions and restrictions are presented to the landowner and discussed.

2.0 ALTERNATIVES

2.1 ALTERNATIVES TO THE PROPOSED FACILITY

Construction of the proposed Project will provide firm, reliable service for an additional capacity of 25,000 bpd of NGLs on the existing OBPL Garden Creek to Riverview NGL Pipeline. The products will be delivered to the ORM Riverview Rail Facility near Sidney, Montana, or continue southward on the pipeline. OBPL identified and evaluated several Project alternatives; however, none of these alternatives effectively satisfied the Project objective. These alternatives included the No-Action Alternative, the Trucking Alternative, and the Rail Alternative.

2.1.1 No Action Alternative

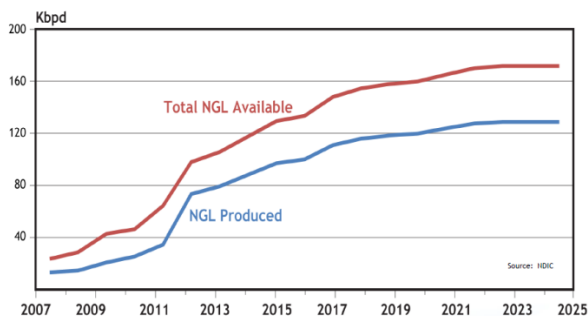
The primary objectives of the Project are to provide additional, new, firm transportation capacity to an existing natural gas liquids transmission system and to place the proposed facility into service by second quarter 2016. Under the No-Action Alternative, the Project would not be built, and the environmental impacts associated with construction and operation of the proposed Project would not occur.

A No-Action Alternative would leave the region constrained by limited transport capacity for safe and reliable transmission of NGL products to markets. Added NGL volumes from ORM’s Lonesome Creek Plant, Garden Creek Plants, and other plant connections will exceed the capacity of the existing Garden Creek to Riverview NGL Pipeline. Without adequate infrastructure to transport this influx of NGLs, the plants would have to flare off this additional product or operate the plants at a reduced capacity.

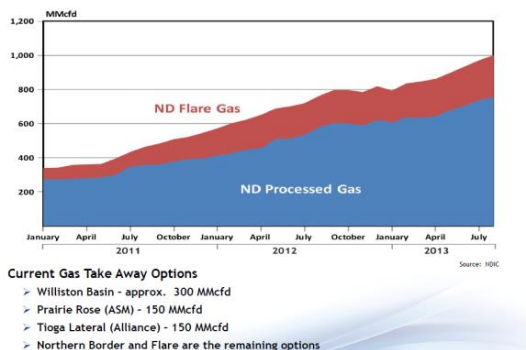
Within the region, NGL production from the Bakken has increased from 20 million barrels per day (MMb/d) in 2011 to almost 90 MMb/d today and is projected by the North Dakota Industrial Commission to continue to increase through 2025 (see Figure 4.1.1-1). Thus, development of solutions for gas gathering, processing, and takeaway infrastructure is needed. Historically, gathering, processing, and pipeline constraints have held back production growth in the Bakken region.

Figure 2.1.1-1 North Dakota NGL Production Forecast

North Dakota NGL Production Forecast



North Dakota Gas Production



Source: NDIC¹

¹ North Dakota Industrial Commission. 2015. North Dakota Drilling and Production Statistics. Available online at <https://www.dmr.nd.gov/oilgas/stats/statisticsvw.asp>.

The No-Action Alternative would constrain the local and regional economic benefits that will be provided by the proposed Project and would deny OBPL’s customers the firm transportation service they have requested. Both of these effects of the No-Action Alternative could cause other natural gas transmission companies to propose similar, new facilities to meet the demand for the contracted volumes of gas to supply OBPL’s customers. These actions would likely result in environmental impacts similar to or greater than those associated with the proposed Project and might not meet the Project’s objectives in the proposed timeframe. Alternatively, the regional demand for NGLs could continue to be met through importation from foreign and other domestic sources. However, continuing to meet regional demand for NGLs through importation—of both foreign and domestic sources—would leave North Dakota and other regional customers subject to global supply chain challenges. As a result, the No-Action Alternative provides no significant advantage over the proposed Project. For these reasons, OBPL rejected a No-Action Alternative.

2.1.2 Truck Transportation Alternative

A Trucking Alternative was reviewed and eliminated due to the volumes of NGLs to be transported. The maximum daily additional capacity provided by the proposed Project would be equal to an estimated 25,000 barrels or 1.05 million gallons of NGLs. The average load for an NGL truck is approximately 10,000 gallons per truck. Thus, it will require 105 trucks per day to be loaded at various Plant locations in the region, an average of 4-5 trucks every hour for 24 hours a day. Similarly, it would require these 105 trucks per day to be unloaded (i.e., transloaded) at the railcar facility terminal. This level of truck activity is not logistically feasible; as it would cause significant amounts of heavy vehicle traffic for the area’s residents, as well as additional wear and tear on infrastructure. Further, any disruption in the trucking capacity due to seasonal load restrictions on roads, inclement weather, or road repairs would result in a plant shutdown and flaring of gas production.

Additionally, the U.S. Department of Transportation (DOT) statistics show that pipelines are the safest, most efficient way to transport these products, particularly across long distances. A sharp increase in traffic on North Dakota roads as a result of the rapid expansion in the number of commercial trucks linked to the oil industry speaks to the issues associated with road safety. The Federal Motor Carrier Safety Administration reports a traffic fatality rate in North Dakota of 0.48 per million vehicle miles traveled in 2012 with 48 deaths involving a bus or large truck, far surpassing any other state.² With an average of only 13 annual deaths involving commercial trucks in the pre-boom years of 2001 to 2005, and the economic cost of severe truck crashes more than doubling between 2008 to 2012, much of the increase in the fatality rate can be attributed to the energy production boom, along with the fact that much of the infrastructure is still single-lane, rural, and unpaved roads.³ Harsh winter weather and seasonal road restrictions compromise the reliability of truck transportation even further. This alternative is not desirable; therefore, OBPL rejected a Trucking Alternative.

2.1.3 Rail Transportation Alternative

A Rail Alternative was also evaluated as a surface transportation alternative; however, the lack of active railroad service within reasonable proximity to the plant’s locations limited the viability of this alternative.

² DOT. 2014. Pocket Guide to Large Truck and Bus Statistics. Federal Motor Carrier Safety Administration.

<http://www.fmcsa.dot.gov/sites/fmcsa.dot.gov/files/docs/FMCSA%20Pocket%20Guide%20to%20Large%20Truck%20and%20Bus%20Statistics%20-%202014%20-%20508C.pdf>.

³ Bachman, J. 2014. North Dakota’s Downside to the Oil Boom: Traffic Deaths. Businessweek.

<http://www.businessweek.com/articles/2014-06-09/north-dakotas-downside-to-the-oil-boom-traffic-deaths>.

Upon further analysis, this alternative was determined not feasible due to the associated environmental impacts and financial, logistic, and time constraints necessary to acquire land and construct the requisite rail infrastructure. This alternative would also require a third-party rail operator.

Additionally, to ship NGLs via rail, they must be combined with crude oil, which increases the flammability of the crude oil and creates a more hazardous product to ship. From a safety standpoint, railroad transport consistently reports a substantially higher number of transportation accidents than pipelines.⁴ A series of major rail accidents taking place in 2013 to 2014 in Canada and the United States has heightened concern about the risks involved in shipping crude by rail.⁵

Reliance on rail as a transportation method for crude oil in the Williston Basin has drastically increased in recent years, carrying a negligible percentage of the overall market share as recently as 2010 to nearly 60 percent of the overall market share by mid-2014.⁶ The rise in the use of rail as a primary transportation method has been driven in large part by the rapid increase in production coupled with a lack of pipeline capacity to account for additional supplies.

The downside of the growth in popularity of rail as a method of long-distance transportation has included delays that have had negative impacts on the agricultural sector, has led to reductions in coal-fired power plant inventories, and has been responsible for production issues in the food production industry, among others. Reports filed with the federal government in August 2014 indicate that the Burlington Northern Santa Fe Railway had a backlog of 1,336 rail cars waiting to ship grain and other products while Canadian Pacific Railway had a backlog of nearly 1,000 cars.⁷ For industries such as those listed in which the use of pipelines is not an option, the only viable alternative would be increased reliance on trucking, which would exacerbate some of the issues listed previously.

A rail transportation alternative would require the design and construction of rail car loading and offloading facilities, lateral service lines, and ancillary facilities necessary to support the requisite volumes of NGLs, requiring land acquisition and permanent conversion of agricultural land to industrial. Use of rail would require a completely different project design than that currently proposed for the Project.

While rail tanker cars are a vital part of the short-haul distribution network for NGLs, pipelines are a more reliable, safer, and more economical alternative for the large volumes transported and long distances covered by the Project. As such, the Rail Transportation Alternative is not considered a viable alternative.

2.2 PUMP STATION SITE ALTERNATIVES

OBPL considered several factors in choosing the preferred Project site location. The preferred site took into consideration landowner acceptance, exclusion and avoidance area criteria, and environmental factors. Additionally, the preferred location meets the required engineering factors, such as hydraulic balance of the pipeline, and proximity to roads and other existing facilities (i.e., pipeline valves).

⁴ DOT. Transportation Accidents By Mode. Office of the Assistant Secretary For Research and Technology. http://www.rita.dot.gov/bts/sites/rita.dot.gov/bts/files/publications/national_transportation_statistics/html/table_02_03.html.

⁵ Fritelli, J. 2014. U.S. Rail Transportation of Crude Oil: Background and Issues for Congress. Congressional Research Service. <http://fas.org/sgp/crs/misc/R43390.pdf>.

⁶ Kringstad, J. 2014. Energy Development and Transmission Committee. North Dakota Pipeline Authority. <https://ndpipelines.files.wordpress.com/2012/04/kringstad-edt-7-8-2014.pdf>.

⁷ Nixon, R. 2014. Grain Piles Up, Waiting For A Ride, As Trains Move North Dakota Oil. New York Times. <http://www.nytimes.com/2014/08/26/us/grain-piles-up-waiting-for-a-ride-as-trains-move-north-dakota-oil.html>.

3.0 ENVIRONMENTAL STUDIES

Findings of Fact, Conclusions of Law and Order were issued for the Garden Creek to Riverview NGL Pipeline on September 7, 2011. These findings concluded that the location, construction, and operation of the proposed transmission facility will produce only minimal adverse effects on the environment and are compatible with environmental preservation and the efficient use of resources. OBPL will comply with the Commission's Order, the conditions and criteria of the certificate and the applicable statutes, rules, regulations, standards, and permits of state or federal agencies for the development of the pump station.

The pump station addition falls within the 1-mile wide study area analyzed in the Garden Creek to Riverview NGL Pipeline application. OBPL has also conducted environmental field surveys in 2015 for other projects in the area for which survey areas encompass a portion of the proposed pump station. A map showing the previously surveyed portion of the proposed pump station is provided in Exhibit C. The portions of the pump station site that fall outside the previously surveyed corridor, included that of the Garden Creek to Riverview NGL Pipeline project, were analyzed using available desktop data and supportive field review of the Project site. The results of the analysis and field studies are attached in Exhibit C and are summarized below.

3.1 CULTURAL RESOURCE INVENTORY

On behalf of OBPL, Merjent, Inc. completed a Class III cultural resources inventory of a 7.9-acre study area for the Project on October 27, 2015 (refer to Exhibit C.1). Prior to the field investigations, a literature review was conducted that focused on a 1-mile-wide area centered on the study area. There are no previously reported archaeological sites located within the 1-mile-wide study area. Field investigations did not identify any previously reported or new archaeological sites.

3.2 NATURAL RESOURCE INVENTORY

OBPL commissioned recent protected species habitat as well as wetland and waterbody delineation field surveys in the Project area between June 29, 2015 and August 27, 2015 (refer to map in Exhibit C.2). While not commissioned specifically for the Project, the southern portion of the Project site was covered by these surveys. No federally protected threatened or endangered species or their habitat were found during these surveys. No wetlands or waterbodies were found during these surveys.

A desktop review of natural resources for the remaining, northern portion of the site using available data was completed on October 29, 2015. Natural resources were reviewed for the following:

- Wetlands;
- Waterbodies;
- Threatened and endangered species protected by the Endangered Species Act; and
- Plant and animal species of concern and other significant ecological communities tracked in North Dakota's Natural Heritage Inventory (NHI) database.

No indication of the natural resources listed above was found during review of desktop data; therefore, formal field surveys were not conducted to delineate wetlands or waterbodies, or to survey for species and their habitat. A field review for natural resource indicators was photographed and documented concurrent with the cultural resource field survey effort. The field review confirmed the findings of the desktop natural resources review (refer to Exhibit C.2).

3.2.1 Migratory Bird Treaty Act

Although the Migratory Bird Treaty Act (MBTA) provides protection for all migratory birds, the U.S. Fish and Wildlife Service (FWS) developed lists of Birds of Conservation Concern (BCC) to foster proactive conservation actions by federal and state agencies and private parties by focusing first on species of concern.⁸ In addition, the United States is divided into Bird Conservation Regions (BCR), each of which has a list of birds present or possibly present within the region that are considered BCCs. The Project is located within BCR 17 or Badlands and Prairies.⁹

The Project is most likely to impact migratory birds if construction and operation activities occur during the nesting season. Within the Project area, birds generally nest from late March to early August, with the peak nesting season for migratory birds taking place between April 15 and July 30. Vegetative clearing during the nesting season would increase the potential for the Project to result in the take of a migratory bird. Typically, take from pipeline facility construction is not of adult birds or juveniles that have fledged from the nest because they are mobile and avoid Project-related activities; instead, take is typically of eggs and nestlings due to nest destruction and loss of young.

OBPL intends to begin construction and complete clearing efforts prior to the migratory bird nesting season. Should construction be delayed resulting in clearing during the nesting season, OBPL will develop a Migratory Bird Conservation and Compliance Plan to outline measures it will implement to avoid, minimize, and reduce possible impacts on migratory birds.

3.2.2 Bald and Golden Eagle Protection Act

Bald and golden eagles are protected by both the MBTA and the Bald and Golden Eagle Protection Act (BGEPA). The BGEPA prohibits the take of a bald or golden eagle adults, juveniles, or chicks including their parts, nests, or eggs without a permit. Take is defined by BGEPA as to pursue, shoot, shoot at, poison, wound, kill, capture, trap, collect, molest, or disturb. BGEPA also addresses impacts resulting from human-induced alterations occurring around previously used nesting sites.

A raptor survey was conducted for the Project October 27, 2015 using a 0.5-mile line-of-sight methodology (see Exhibit C.2). No primary or secondary signs of bald or golden eagles or active nests were observed. Additionally, OBPL has conducted consultation with the North Dakota Game and Fish Department (NDGF) in 2015 for other projects that include the area of the pump station to determine known locations of bald and golden eagle nest sites. Based on these consultations, there are no known bald or golden eagle nests within the area of the pump station.

FWS consultation conducted for the Garden Creek to Riverview NGL Pipeline included review for impacts to bald and golden eagles. OBPL will comply with the FWS recommendations and implement practicable measures to avoid impacts to wildlife. The Commission's Conclusions determined that the location, construction, and operation of the proposed transmission facility will produce only minimal adverse

⁸ FWS. 2008. Birds of Conservation Concern 2008. FWS, Division of Migratory Bird Management. Available online at <http://www.fws.gov/migratorybirds/pdf/grants/BirdsofConservationConcern2008.pdf>.

⁹ U.S. NABCI Committee, 2000 Rufa Red Knot Ecology and Abundance. Supplement to Endangered and Threatened Wildlife and Plants; Proposed Threatened Status for the Rufa Red Knot (*Calidris canutus rufa*). Docket No. FWS-R5-ES-2013-0097; RIN 1018-AY17. http://www.fws.gov/northeast/redknot/pdf/20130923_REKN_PL_Supplement02_Ecology%20Abundance_Final.pdf.

effects on the environment and are compatible with environmental preservation and the efficient use of resources. Per Order Provision Paragraph 10, OBPL will report to the Commission any bald or golden eagles or their nests sighted during construction.

3.3 TREE/SAPLING/SHRUB INVENTORY

The field site review conducted on October 27, 2015 confirmed that no trees, saplings or shrubs are present within the proposed pump station location. OBPL will comply with the tree and shrub mitigation specifications required by the Commissions' Order issued for the Garden Creek to Riverview NGL Pipeline Project.

3.4 NOXIOUS WEEDS INVENTORY

The Federal Noxious Weed Act of 1974 established a federal program to control the spread of noxious weeds. The U.S. Secretary of Agriculture was given the authority to declare plants "Noxious Weeds" and limit the interstate spread of such plants without a permit. Two federally listed noxious weeds (*Cuscuta L.* and *Orobancha ludoviciana*) occur in North Dakota.

North Dakota law (North Dakota Century Code § 4.1-47-02) requires every person to do all things necessary and proper to control the spread of noxious weeds and makes it illegal for any person to distribute, sell, or offer for sale within this state a noxious weed. The North Dakota Department of Agriculture (NDDA) lists 11 species of noxious weed and invasive species.

In addition to the NDDA noxious weed and invasive species list, localized weed boards within each county manage noxious weeds and invasive species, and may develop a list of additional weeds for enforcement within their jurisdiction. McKenzie County has designated five species of noxious weeds.

It is OBPL's intent to minimize the potential introduction and/or spread of undesirable species (i.e., invasive species and noxious weeds) within the Project site during construction activities. However, it is not practicable for OBPL to eradicate undesirable species that are outside the leased site boundary. OBPL will comply with a Weed Management Plan as submitted to McKenzie County per Conditional Use Permit requirements, and with landowner agreements regarding noxious weeds.

4.0 AGENCY NOTIFICATIONS AND PERMITTING

As part of general company planning and project development, OBPL maintains relationships with and has been in recent contact with federal, state, and local agencies and organizations that have an interest in the area surrounding the Project site. OBPL has obtained a lease from the landowner, confirming the absence of federal easements with the landowner. OBPL will comply with all permit requirements set forth by federal, state, and local agencies, as applicable.

5.0 CRITERIA

In accordance with North Dakota Administrative Code § 69-06-08-02, OBPL evaluated the location of the site in relation to the Commission’s Exclusion Area, Avoidance Area, and Selection Criteria with regard to the pump station addition. No exclusion or avoidance areas are located within the pump station site. As discussed above, no cultural or natural resources will be impacted, and the analysis with respect to the remaining selection criteria remains largely consistent with the information set forth in Section 3.4 of the Application for a Route Permit, except as it relates to the conversion of approximately 1.8 acres of agricultural land to industrial use. Further, OBPL has concluded that the proposed adjustments do not alter the conclusion that the Project will produce minimal adverse impact will result from the location, construction, and operation of the Project at the adjusted locations, as set forth in Conclusions of Law Paragraph No. 7 of the Commission's Order.

5.1 EXCLUSION AREAS

Table 5.1-1 Exclusion Areas			
Exclusion Area	Located within the Study Area	Located within the Project Site	Administering Agency
National Parks	No	No	National Park Service (USNPS)
National Memorial Parks	No	No	USNPS
National Historic Sites and Landmarks	No	No	USNPS
National Natural Landmarks	No	No	USNPS
National Wilderness Areas	No	No	USNPS and U.S. Forest Service (USFS)
National Monuments	No	No	USNPS and State Historical Society
State Parks	No	No	State Park Service
State Historic Sites	No	No	State Historical Board
State Monuments	No	No	State Historical Board
State Historical Markers	No	No	State Historical Society
State Archaeological Sites	No	No	State Historical Board
State Nature Preserves	No	No	State Park Service
County Parks and Recreation Areas, Municipal Parks, and Parks under Other Governmental Jurisdiction	No	No	Various
Areas Critical to the Life Stages of Threatened or Endangered Animal or Plant Species	No	No	FWS
Areas Where Animal or Plant Species Unique or Rare to the State Would be Irreversibly Damaged	No	No	Various
Areas within 1,200 feet of an ICBM facility	No	No	Department of Defense
Areas within 30 feet of direct line of ICBM launch facility	No	No	Department of Defense

5.2 AVOIDANCE AREAS

Table 5.2-1 Avoidance Areas			
Avoidance Area	Located within the Study Area	Located within the Project Site	Administering Agency
National Historic Districts	No	No	State Historic Society
National Wildlife Areas	No	No	FWS
National Wild, Scenic, or Recreational Rivers	No	No	Heritage Conservation Recreation Service, State
National Wildlife Refuges	No	No	FWS
National Grasslands	No	No	USFS
State Wild, Scenic or Recreational Rivers	No	No	State of North Dakota Legislative Assembly
State Game Refuges	No	No	NDGF
State Game Management and Management Areas	No	No	NDGF
State Forests	No	No	State Forest Service
State Forest Management Lands	No	No	State Forest Service
State Grasslands	No	No	State Park Service
Historical Resources which are not specifically designated as Exclusion or Avoidance Areas	No	No	State and County Historical Society
Areas which are Geologically Unstable	No	No	State Geological Survey
Within 500 Feet of a Residences, School, or Place of Business	NA	No	Landowner
Reservoirs	No	No	U.S. Army Corps of Engineers and State Water Commission
Municipal Water Supplies	No	No	State Water Commission
Water Sources for Organized Rural Water Districts	No	No	State Water Commission
Irrigated Land	No	No	State Water Commission
Areas of Recreational Significance but not designated exclusion areas	No	No	Various

5.3 SELECTION CRITERIA

Table 7.3-1 Selection Criteria	
Selection Criteria	Discussion
Impacts on Agriculture	
Agricultural production	The property is being acquired through a lease agreement negotiated by OBPL and the landowner. Approximately 1.8 acres will be converted from farmland to an industrial use.
Family farms and ranches	The property is being acquired through a lease agreement negotiated by OBPL and the landowner. The Site will be converted from a family farm to an industrial use. The Site is more than a ¼ mile from the nearest farm related structures. No other impacts to family farms or ranches are anticipated.
Land which the owner demonstrates has soil, topography, drainage, and an available water supply that cause the land to be economically suitable for irrigation	OBPL's investigation found no evidence of irrigation within the Study Area or Site.

ONEOK Bakken Pipeline, L.L.C. – Garden Creek to Riverview NGL Pipeline Project
North Dakota Public Service Commission Amendment

Table 7.3-1 Selection Criteria	
Selection Criteria	Discussion
Surface drainage patterns and ground water flow patterns	OBPL has studied the site with respect to stormwater run-off management and has determined that the most effective means of controlling stormwater flows over the long-term will be to implement engineered structural control measures to manage run-off from the Site in combination with a passive system that utilizes the natural drainage of the undeveloped portions of the lease area. This adjacent, undeveloped area will provide natural filtration of sediments and will reduce the volume and velocity of stormwater runoff.
Impacts on Other Resources	
Sound-sensitive land uses	There are no noise-sensitive resources located within 500 feet of the Site. OBPL did not identify any dwellings within the proposed Site. The Project has been sited in a rural setting, effectively isolating the Project from the majority of sensitive receptors. Local residents may experience additional motor vehicle volumes on area roadways, but the noise associated with vehicles will be similar to existing background levels and occur largely during normal business hours.
The visual effect on the adjacent area	No designated Scenic Byways or Backways; or federal, state or local recreation areas are present within the study area. Oil and gas development is common in the area.
Extractive and storage resources	Four types of actively extractive resources are common in the area: oil and gas; sand, gravel, and scoria; lignite; and uranium. Impacts on future extractive development would not constitute a substantial loss of resource availability because of the nature of the pump station foot print relative to the expanse of areas with resource potential.
Wetlands, woodlands, and wooded areas	No wetlands, woodlands or wooded areas impacted.
Radio and television reception, and other communication or electronic control facilities	Based on review of publicly available information, no radio and TV reception and other communication or electronic facilities are located within the study area. No impacts on television or radio reception or communication or electronic control facilities are anticipated to occur as a result of the Project.
Human health and safety	OBPL promotes a safe and healthy workplace during construction and operations of all its assets. A corporate policy that meets or exceeds federal and state laws, rules and regulations is enforced and adhered to by all employees and contractors. OBPL governs operations and construction activities with various safe work procedures designed to protect property and personnel and maintain regulatory compliance.
Animal health and safety	The wildlife currently inhabiting the Site are common and are generally mobile. The local wildlife inhabitants will be displaced by the Project without a measurable impact to the viability of these populations. No species of special concern are anticipated to experience direct impacts due to construction or operation of the station.
Plant life	The Project will result in the loss of negligible amount of agricultural land, when measured on a county- or state-wide basis. No species of special concern will be impacted by the Project.

5.4 POLICY CRITERIA

In accordance with North Dakota Administrative Code § 69-06-08-02(4), OBPL has analyzed the Project site and has concluded that the proposed site will not alter any of OBPL’s commitments with respect to Policy Criteria as set forth in the Findings of Fact Paragraph No. 19 of the Commission’s Order.

6.0 MITIGATION MEASURES

OBPL has developed or is in the process of developing several Project control documents that will be utilized during construction activities to minimize and mitigate impacts to environmental resources. These plans will be incorporated into contract documents and enforced by OBPL:

- MBTA Plan
 - Protection of federally protected migratory birds and eagles/raptors.
- Stormwater Pollution Prevention Plan
 - Construction stormwater management and erosion/sediment control.
- Spill Prevention, Containment, and Countermeasure Plan
 - Spill prevention and best management practices, with details on spill response and notification procedures in the event of a spill.
- Unanticipated Discoveries Plan
 - Response measures to be followed in the event of a discovery of cultural resources or human remains.
- Noxious Weed Plan
 - Measures to control the spread of invasive and noxious weeds.
- Dust Control Plan
 - Control of fugitive dust caused by construction activities/soil exposure.

To further ensure compliance with permits, plans, obligations, and commitments, OBPL will employ one or more Environmental Inspectors (EI) during the Project. The EI(s) will be responsible for monitoring construction activities and will provide reports to OBPL staff.

7.0 QUALIFICATIONS OF PREPARERS

Brett Fuller

Operations Engineer
ONEOK Partners 100 West 5th Street, Tulsa, OK 74103

Degree(s): B.S Mechanical Engineering – Southern Methodist University

Mr. Fuller is an Operations Engineer with 3 years of facility construction experience. As an Operations Engineer, Mr. Fuller has managed several facility projects for ONEOK Partners Large Projects group. He also serves as project manager for the proposed pump station project.

Todd Kelvington, CEP

Environmental Project Manager
ONEOK Partners

Degree(s): M.S. Environmental Policy and Management, American Military University; and B.S. Biology, Norwich University

Mr. Kelvington is an environmental specialist with 17 years of environmental planning experience in a wide range of development projects. He has both performed and managed the assessment, siting, permitting, and construction of a wide range of federal, state, and municipal infrastructure projects throughout the mid-west and east coast regions. He is a Certified Environmental Professional with the Academy of Board Certified Environmental Professionals.

Madeline Steffenson, CPPM, EIT

Senior Environmental Analyst
Merjent, Inc.

Degree(s): M.B.A, North Dakota State University, B.S. Civil Engineering, North Dakota State University

Ms. Steffenson is a Senior Analyst with Merjent, Inc. and has excelled in her 4 years of experience in the water resources and environmental regulation fields. Her experience in the environmental field includes project management, interpretation and analysis of project related data/maps to evaluate permit needs and form strategies during the project planning stages, coordinating environmental field surveys, conducting environmental training, performing compliance inspections and inspector coordination. Ms. Steffenson has permitting experience including preparation of federal, state, and local permit applications, including NDPSC Siting Authorizations, National Pollutant Discharge Elimination System applications and project SWPPPs, preparation of third-party Environmental Assessments, and coordination with local, state, and federal units of government.

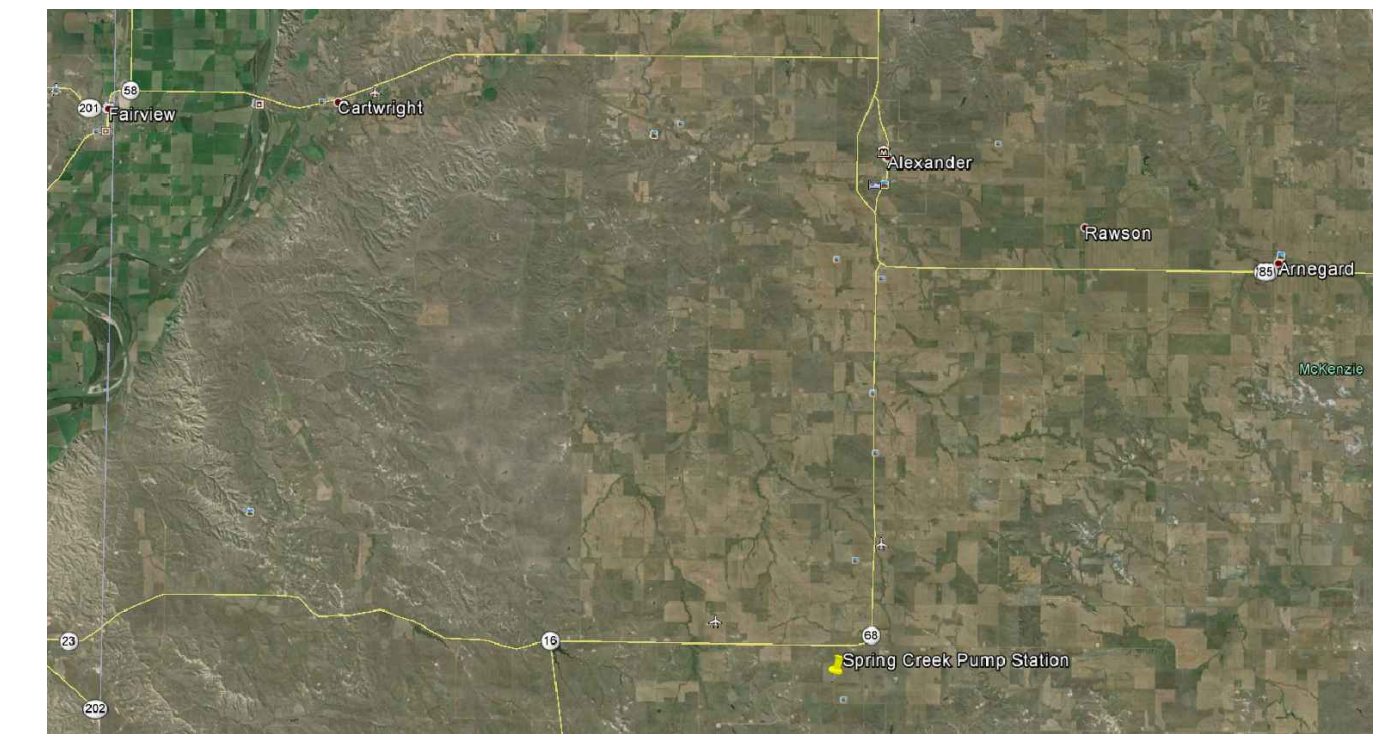
Jennifer Kamm

Senior Environmental Analyst
Merjent, Inc.

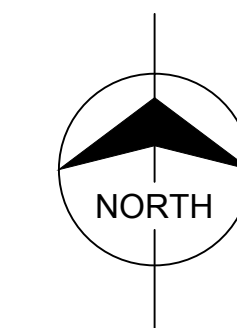
Degree(s): B.S. Natural Resources and Environmental Studies (minor in Forestry), University of Minnesota-Twin Cities

Ms. Kamm is a Senior Analyst with Merjent, Inc. with over 10 years of environmental consulting experience including natural gas and oil pipeline construction, wind energy development, electrical transmission, transportation, and land development projects for both private clients and government agencies. Ms. Kamm has assisted in the development of Federal Energy Regulatory Commission Environmental Impact Studies, NDPSA Siting Authorizations, Environmental Assessments, Environmental Resource Permitting, Land Use Plans, Wildlife and Endangered Species Assessments, Mitigation Plans, Environmental Construction and Restoration Plans, Wetland Delineations, COE permit applications, COE jurisdictional determinations, pipeline route evaluations, noxious weed and aquatic nuisance species management plans, unanticipated findings documents, spill prevention containment and control plans, SWPPPs, federal and state public lands crossing permits, and floodplain crossing permits

EXHIBIT A

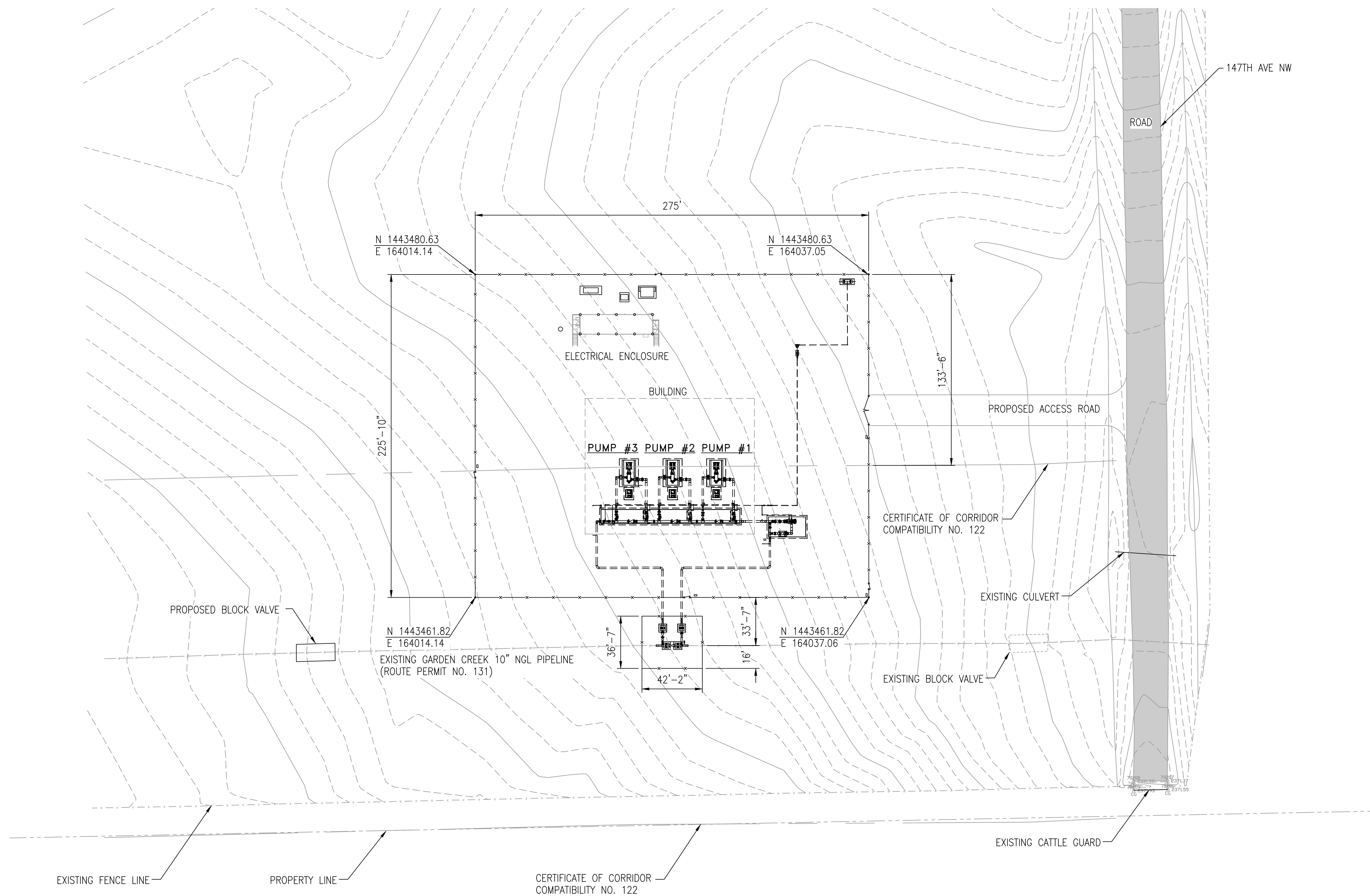


NOT TO SCALE

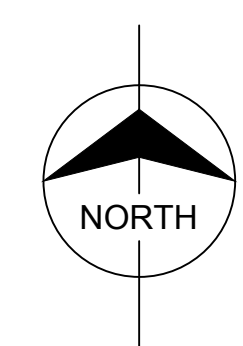
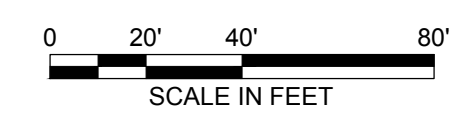


TOWNSHIP 148 NORTH RANGE 102 WEST, 5TH P.M.
SECTION 3: SW/4SW/4
MCKENZIE COUNTY, NORTH DAKOTA

MILTON TIM MADISON A/K/A MILTON T. MADISON AND
CLARICE MARCELLA MADISON A/K/A CLARICE MADISON,
HUSBAND AND WIFE



PLOT PLAN



PRELIMINARY - NOT FOR CONSTRUCTION

MK	DATE	REVISIONS	BY	AP.	MK	DATE	REVISIONS	BY	AP.
A	10/30/15	ISSUED FOR PERMIT REVIEW	JMS	TWD					

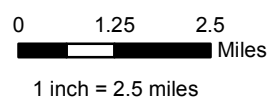
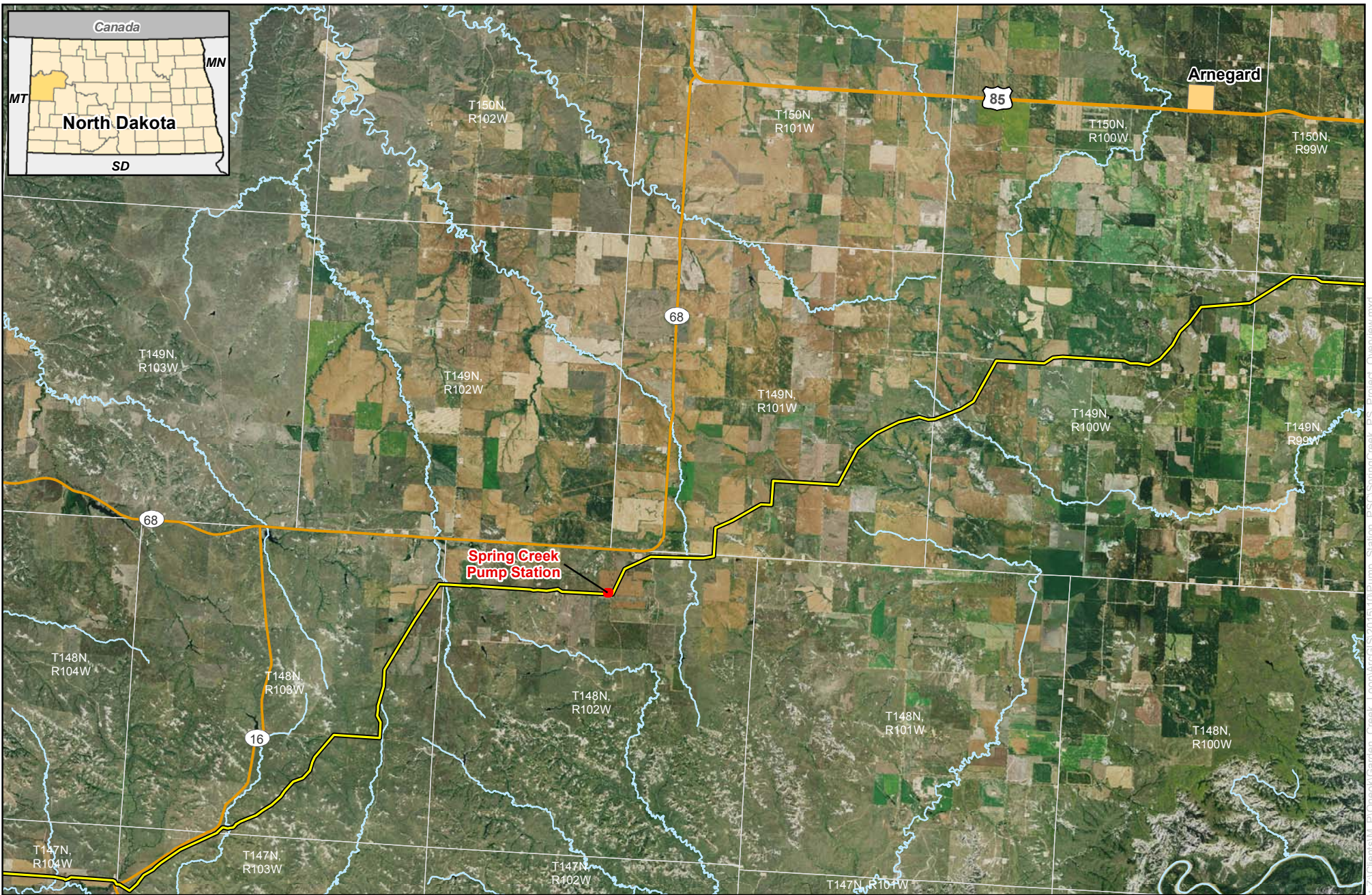
NOTICE
This drawing has not been published and is the property of ONEOK PARTNERS LP, 100 W. FIFTH ST., TULSA, OKLA., and is loaned to the borrower for his confidential use only; and in consideration of the loan of this drawing the borrower promises and agrees that it shall not be reproduced, copied, loaned, or otherwise disposed of directly or indirectly, nor used for any purpose other than for which it is specifically furnished.

DWG. NO.	REFERENCE DRAWINGS






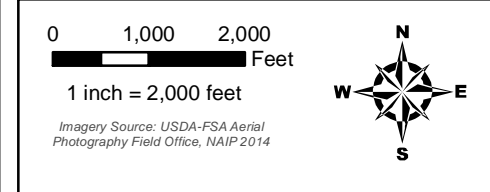
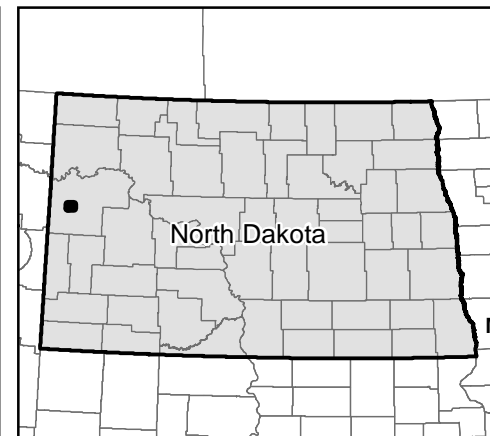
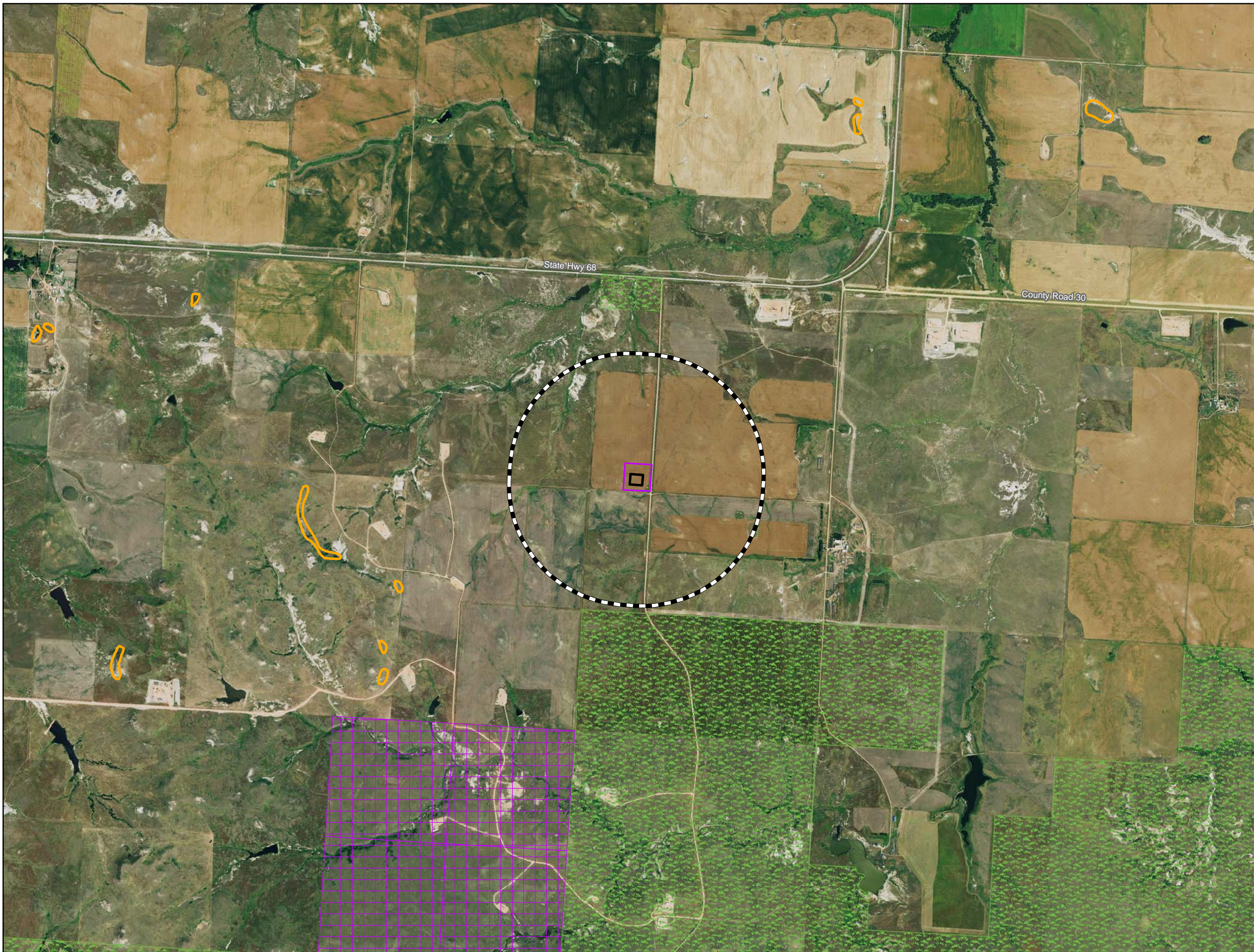
BAKKEN PIPELINE SPRING CREEK BOOSTER STATION PLOT PLAN			
DES.: TWD	AFE#:	DATE: 10/30/15	REV.
DR.: JMS	REFIN. JOB#:	DWG. NO.:	A
CH.:	SCALE: AS SHOWN	SK-01	
AP.:	CAD#: SK-01		

EXHIBIT B



**ONEOK Bakken Pipeline
Spring Creek Pump Station
EXHIBIT B.1 Project Location Map
McKenzie County, ND**

-  Existing Garden Creek to Riverview NGL Pipeline
-  Pump Station
-  Township Boundary



Imagery Source: USDA-FSA Aerial Photography Field Office, NAIP 2014







-  Project Review Area
-  Pump Station Boundary
-  1-mile Study Area
- Avoidance Areas**
-  National Grassland
-  Landslide Deposits
-  NDDTL - School Trust Land

EXHIBIT B.2

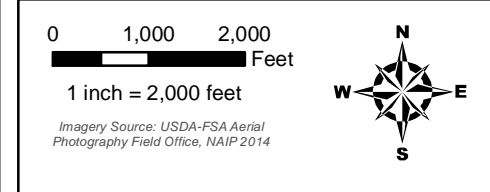
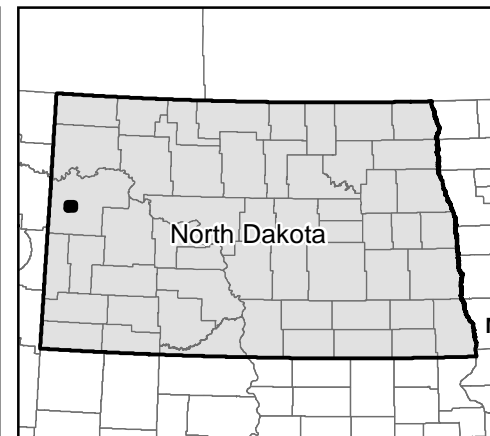
ONEOK Bakken Pipeline Spring Creek Pump Station Project

Avoidance and Exclusion Areas

Page 1 of 1
McKenzie County



Date: (11/5/2015) Source: Z:\Clients\M_P\Oneok\Garden_Creek_Loop\ArcGIS\2015\10\Pump_Station_PSC\SC_PumpStation_Avoidance_Exclusion_Area.mxd



- Project Review Area
- Pump Station Boundary
- 1-mile Study Area
- + Oil and Gas Well
- NDDTL - Mineral Trust Land
- NWI Wetland
- USGS Streams**
- Intermittent Stream
- Perennial Stream

EXHIBIT B.3

**ONEOK Bakken Pipeline
Spring Creek Pump
Station Project**

Other Criteria Considered

Page 1 of 1
McKenzie County

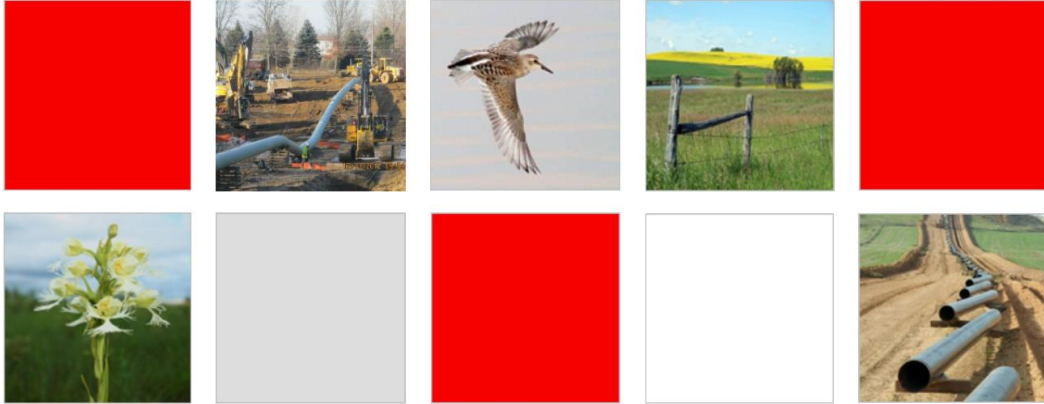
merjent

For Environmental Review Purposes Only 11/5/2015

Date: (11/5/2015) Source: Z:\Clients\W_P\Oneok\Garden_Creek_Loop\ArcGIS\2015\10\Pump_Station_PSC\SC_PumpStation_Other_Criteria.mxd

EXHIBIT C

EXHIBIT C.1



Class III Cultural Resources Inventory Spring Creek Pump Station McKenzie County, North Dakota

PREPARED BY

Merjent, Inc.
800 Washington Avenue North, Suite 315
Minneapolis, Minnesota 55401

Scott B. Meyer

Scott B. Meyer, M.S., Principal Investigator

FOR
ONEOK Bakken Pipeline, L.L.C.

November 5, 2015

EXECUTIVE SUMMARY

On October 27, 2015, Merjent, Inc. (Merjent) completed a Class III cultural resources inventory of the project footprint for the Spring Creek Pump Station Project (Project) located in McKenzie County, North Dakota. Merjent surveyed 7.9 acres (3.2 hectares) through surface collection. Merjent's field investigations did not result in the documentation of any archaeological sites.

TABLE OF CONTENTS

EXECUTIVE SUMMARY	i
1.0 INTRODUCTION	1
1.1 ENVIRONMENTAL SURVEY AREA DESCRIPTION	1
1.2 REPORT CONTENTS	1
2.0 ARCHAEOLOGICAL LITERATURE AND RECORDS REVIEW	4
2.1 PREVIOUSLY RECORDED ARCHAEOLOGICAL SITES AND ISOLATED FINDS.....	4
2.2 PREVIOUS ARCHAEOLOGICAL SURVEYS.....	4
3.0 FIELD METHODS	6
3.1 EVALUATION CRITERIA.....	6
4.0 RESULTS	6
5.0 SUMMARY	8
6.0 REFERENCES CITED	8

TABLES

Table 2.2-1	Summary of Cultural Resource Reports Associated within 2-mile-wide Study Area	4
-------------	--	---

FIGURES

Figure 1.0-1	Topographic Overview Project and Survey Area	2
Figure 1.0-2	Aerial View of Class III Survey Coverage Map	3
Figure 2.2-1	Previous Surveys Map.....	5
Figure 4.0-1	Overview to South	7
Figure 4.0-2	Overview to West	7

APPENDICES

Appendix A	2015 SHSND Cultural Resource Investigation Permit	
------------	---	--

1.0 INTRODUCTION

On October 27, 2015, Merjent, Inc. (Merjent) conducted a Class III archaeological inventory of the 7.9 acre (ac)(3.2 hectare [ha]) environmental survey area for the Spring Creek Pump Station Project (Project) located in McKenzie County, North Dakota. This report presents the results of this study. Prior to the field investigations, Merjent conducted a literature review that focused on a 1-mile-wide (1.6-kilometer-wide) area centered on the Project environmental survey area.

Merjent Principal Investigator Scott B. Meyer is permitted by the State Historical Society of North Dakota (SHSND) to conduct cultural resource investigations in North Dakota.

1.1 ENVIRONMENTAL SURVEY AREA DESCRIPTION

The proposed pump station is approximately 1.8 ac (0.73 ha) located in McKenzie County, North Dakota (Figure 1.0-1, 1.0-2). The environmental survey area is approximately 7.9 ac (3.2 ha) and was surveyed to accommodate any engineering or site design changes that may occur to the pump station in the future. The current land use is an agricultural field with a mixture of crops that had not reached maturity.

1.2 REPORT CONTENTS

Merjent prepared this report in accordance with the *Secretary of the Interior's Standards and Guidelines for Archaeology and Historic Preservation* (48 Code of Federal Regulations [CFR] 44716) and the *North Dakota SHPO Guidelines Manual for Cultural Resource Inventory Projects* (SHSND, 2015).

Following this introductory section, the pre-field archaeological literature and records review is presented in Section 2.0. Field and analytic methods and National Register of Historic Places (NRHP) criteria for evaluation (36 CFR 60.4) are presented in Section 3.0. The results of the field investigations are detailed in Section 4.0. A summary of the field effort is presented in Section 5.0 and references are listed in Section 6.0.

Appendix A contains the 2015 Cultural Resource Investigation Permit that is required to conduct archaeological investigations in the state of North Dakota.

ONEOK BAKKEN PIPELINE, L.L.C.
 SPRING CREEK PUMP STATION
 2015 NORTH DAKOTA CLASS III CULTURAL RESOURCES INVENTORY

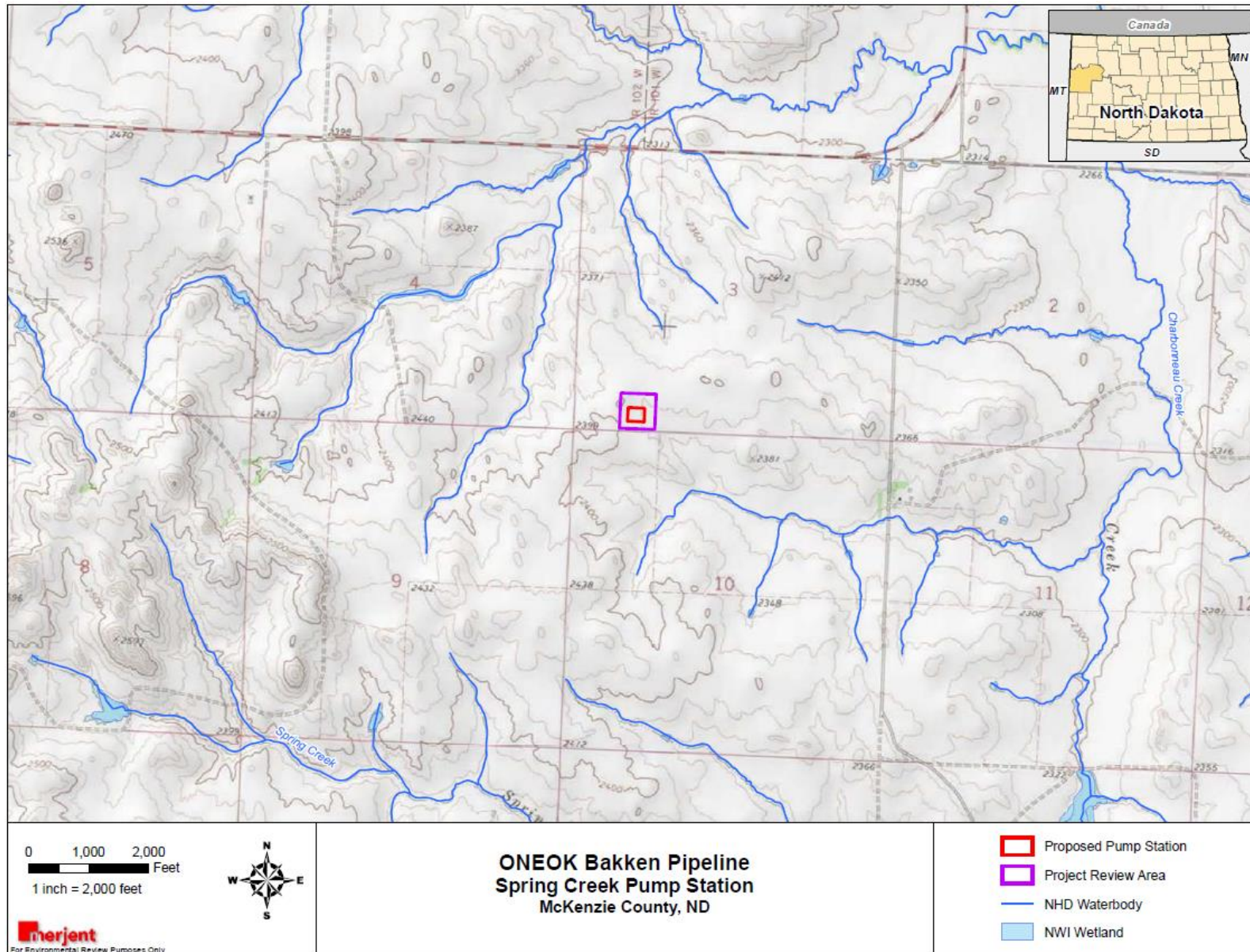


Figure 1.0-1 Topographic Overview Project and Survey Area

ONEOK BAKKEN PIPELINE, L.L.C.
SPRING CREEK PUMP STATION
2015 NORTH DAKOTA CLASS III CULTURAL RESOURCES INVENTORY

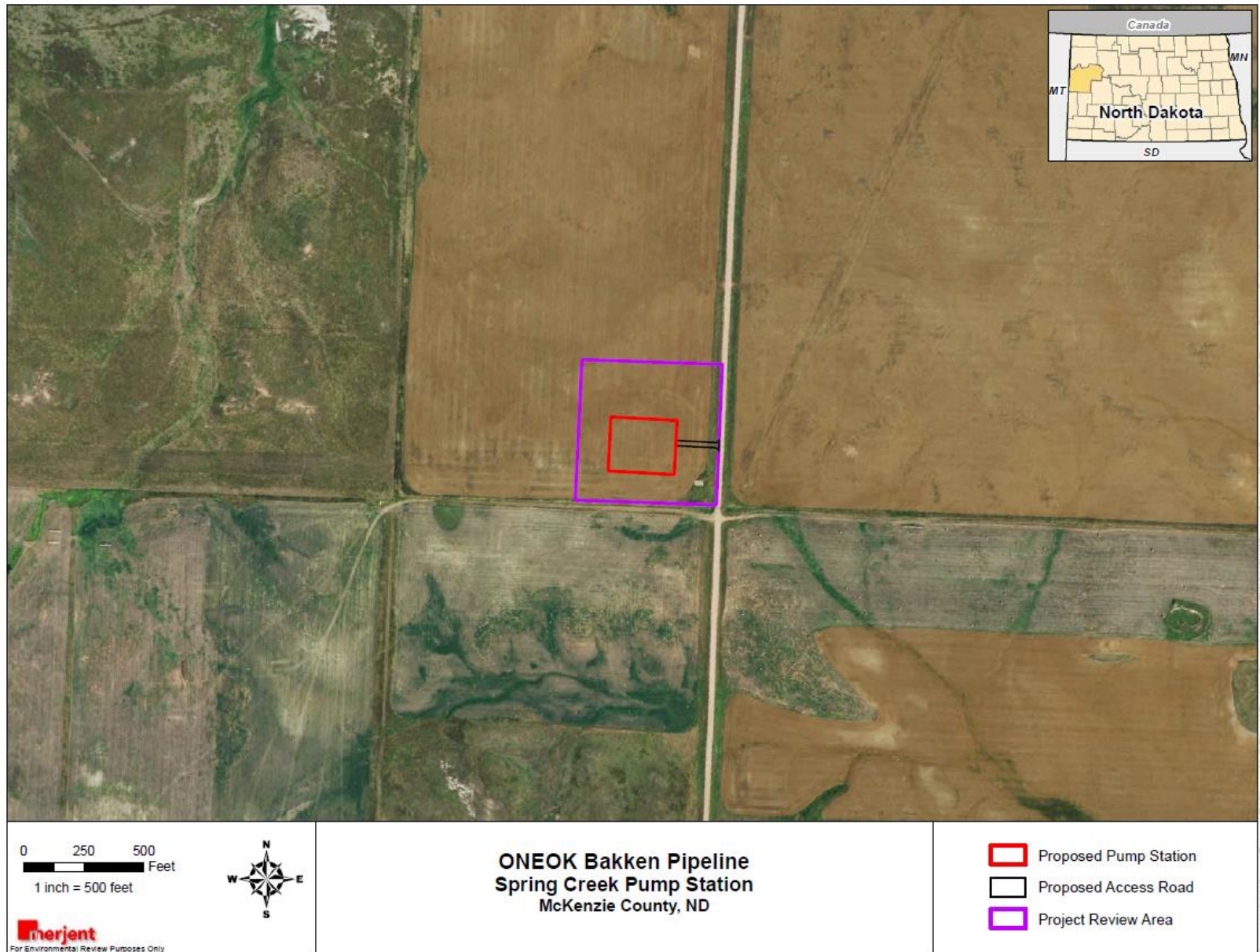


Figure 1.0-2 Aerial View of Class III Survey Coverage Map

2.0 ARCHAEOLOGICAL LITERATURE AND RECORDS REVIEW

Prior to completing the in-field Class III inventory, Merjent conducted a literature and archival review of the Project environmental survey area. Archaeological site locations within a 1-mile-wide study area centered on the Project environmental survey area were obtained from the SHSND in Bismarck, North Dakota.

2.1 PREVIOUSLY RECORDED ARCHAEOLOGICAL SITES AND ISOLATED FINDS

There are no previously reported archaeological sites located within the 1-mile-wide study area.

2.2 PREVIOUS ARCHAEOLOGICAL SURVEYS

A total of 6 previous archaeological surveys have been conducted within the 1-mile-wide study area between 1992 and 2015 (Table 2.2-1). Refer to Figure 2.2-1 for a map of previous surveys within the 1-mile-wide study area.

Table 2.2-1 Summary of Cultural Resource Reports Associated within 2-mile-wide Study Area			
Manuscript Number	Year	Author	Title
005759	1992	Floodman, M.	McKenzie County Road Project: Madison Reroute McKenzie District, Little Missouri National Grasslands Section 10 and 15, T148N, R102W. McKenzie County, North Dakota.
005891	1992	Floodman, M.	McKenzie County Road Project: Madison Road Realignment McKenzie District, Little Missouri National Grasslands Section 10 and 15, T148N, R102W. McKenzie County, North Dakota.
010247	2007	Burns, W.	Belle Fourche Pipeline Project: A Class III Cultural Resource Inventory, McKenzie Co., ND
012263	2011	Riordan, C.	A Class I and Class III Cultural Resources Inventory of the Bear Paw Energy Natural Gas Liquids Garden Creek Pipeline, Private Lands, McKenzie County, North Dakota
013350	2012	Mosteck, S.	A Class III Cultural Resource Survey of the Hunt Oil Company Bowline 1-3-10H Oil Well in McKenzie County, North Dakota
Pending	2015	Harding, W.	A Class I and III Cultural Resource Inventory of Garden Creek Loop NGL Pipeline Project, McKenzie County, North Dakota

ONEOK BAKKEN PIPELINE, L.L.C.
 SPRING CREEK PUMP STATION
 2015 NORTH DAKOTA CLASS III CULTURAL RESOURCES INVENTORY

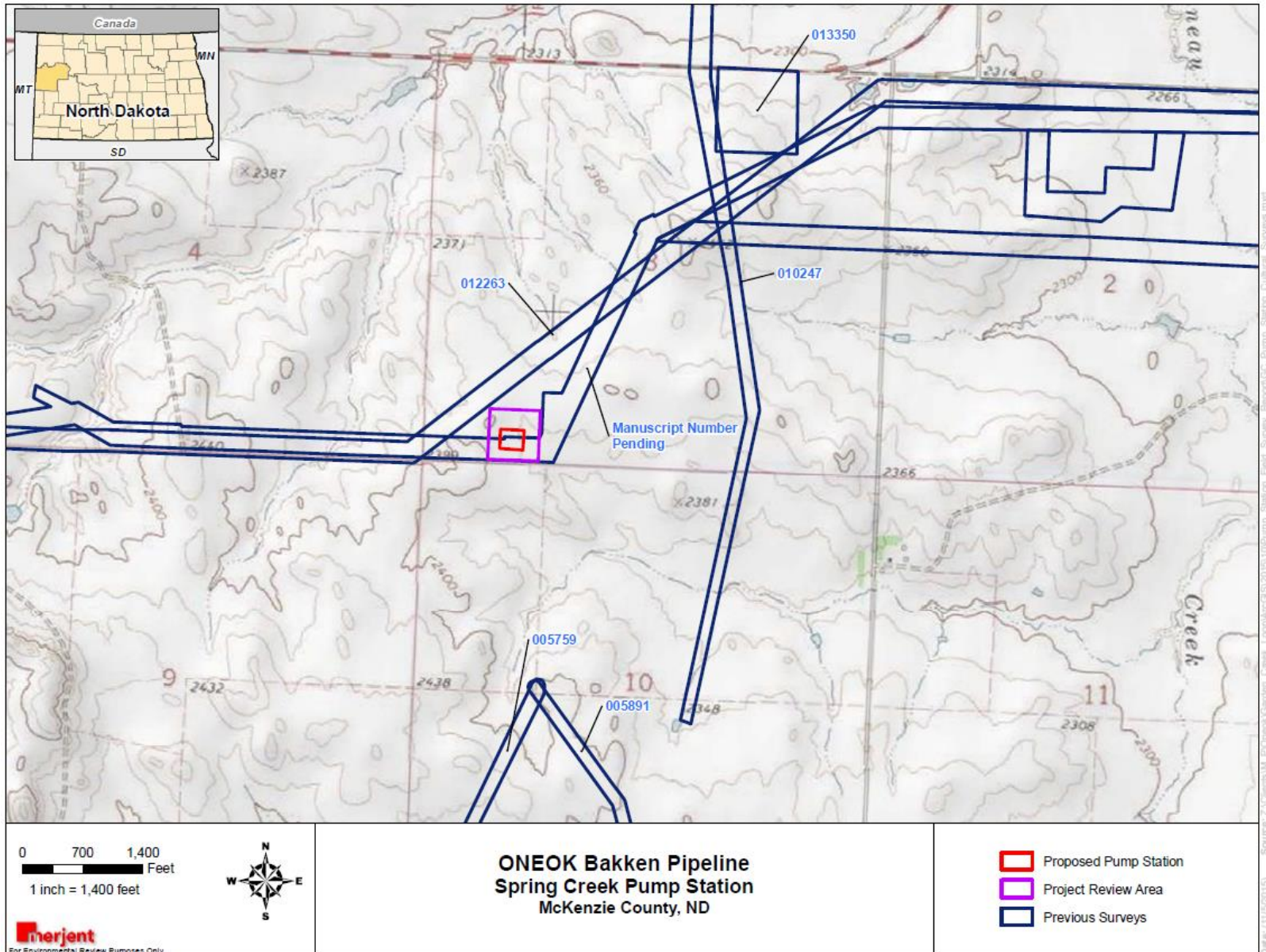


Figure 2.2-1 Previous Surveys

3.0 FIELD METHODS

Merjent conducted this 2015 Class III cultural resources inventory in accordance with the *North Dakota SHPO Guidelines Manual for Cultural Resource Inventory Projects* (SHSND, 2015).

The location of the environmental survey corridor was identified utilizing aerial maps depicting the Project area. Merjent employed systematic survey using surface collection. Surface collection was conducted in areas with surface visibility greater than 10 percent at 50-foot (15-meter) interval transects.

3.1 EVALUATION CRITERIA

The purpose of Merjent's 2015 Class III cultural resources inventory was to identify and record previously undocumented cultural resources located within the Project environmental survey area and to assess site eligibility for inclusion on the NRHP. Such sites and properties are those that meet the required eligibility criteria as established by the Secretary of the Interior and detailed in 36 CFR 60.4:

The quality of significance in American history, architecture, archaeology, engineering, and culture is present in districts, sites, buildings, structures, and objects *that possess integrity of location, design, setting, materials, workmanship, feeling, and association* [emphasis added], and

- A. that are associated with events that have made a significant contribution to the broad patterns of our history; or
- B. that are associated with the lives of persons significant in our past; or
- C. that embody the distinctive characteristics of a type, period, or method of construction, or that represent the work of a master, or that possess high artistic values, or that represent a significant and distinguishable entity whose components may lack individual distinction; or
- D. that have yielded, or may be likely to yield, information important in history or prehistory.

4.0 RESULTS

Merjent identified no previously reported or new archaeological sites within the Project environmental survey corridor in 2015 (see Figure 1.0-2). The Project area consists of an agricultural field which had an assortment of crops including corn, wheat, and sunflowers. Crops were not mature and were only 2 to 3 feet above the ground surface. Ground visibility was good and ranged from 60 to 40 percent (Figures 4.0-1, 4.0-2).



Figure 4.0-1 Overview to South



Figure 4.0-2 Overview to West

5.0 SUMMARY

On September 15, 2015, Merjent completed a Class III cultural resources inventory of a Project area located in McKenzie County, North Dakota. Merjent surveyed 7.9 acres (3.2 hectares) through surface collection utilizing 15 meter transects. Merjent's field investigations did not result in the documentation of any archaeological sites; therefore, Merjent recommends no further work in the Project environmental survey corridor.

6.0 REFERENCES CITED

State Historical Society of North Dakota (SHSND). 2012. North Dakota SHPO Guidelines Manual for Cultural Resource Inventory Projects. Electronic Document, <http://www.history.nd.gov/hp/PDFinfo/NDSHPO-Guidelines-2013.pdf>. Accessed April 2014.

Appendix A

2015 SHSND Cultural Resource Investigation Permit



**STATE
HISTORICAL
SOCIETY
OF NORTH DAKOTA**

Jack Dalrymple
Governor of North Dakota

North Dakota
State Historical Board

Calvin Grinnell
New Town - President

A. Ruric Todd III
Jamestown - Vice President

Margaret Puetz
Bismarck - Secretary

Albert I. Berger
Grand Forks

Gereld Gerntholz
Valley City

Diane K. Larson
Bismarck

Chester E Nelson, Jr.
Bismarck

Sara Otte Coleman
*Director
Tourism Division*

Kelly Schmidt
State Treasurer

Alvin A. Jaeger
Secretary of State

Mark Zimmerman
*Director
Parks and Recreation
Department*

Grant Levi
*Director
Department of Transportation*

Claudia J. Berg
Director

*Accredited by the
American Alliance
of Museums since 1986*

March 23, 2015
Principal Investigator Michael Madson
Merjent, Inc.
800 Washington Ave N STE 315
Minneapolis, MN 55401-1156

RE: 2015 North Dakota Permit

Dear Principal Investigator Madson,

Congratulations for receiving a 2015 permit to conduct cultural resources investigations in North Dakota. The following people are all qualified in their respective fields: Peggy J. Boden, Michael Madson, Scott B. Meyer, Allison M. Lange Mueller, Daniel J. Born, and Dean Sather, are qualified as principal investigators in archaeology. Michael C. Whitehead and Matthew C. Terry are qualified as Crew Chiefs. Michael Madson also is qualified as principal investigator in history.

Please remember to include a \$50.00 filing fee for each report your firm produces in North Dakota in compliance with Section 106 of the National Historic Preservation Act. Multiple copies of one original report are considered one report in terms of filing fees.

Also, please follow guidelines relayed as **"Important New Information on NDSHPO Log In System"** and prior information regarding electronic filing of cultural resource reports that are a condition of your 2015 permit.

If you have any questions regarding this permit, please feel free to contact me directly at (701)328-3574, or in writing.

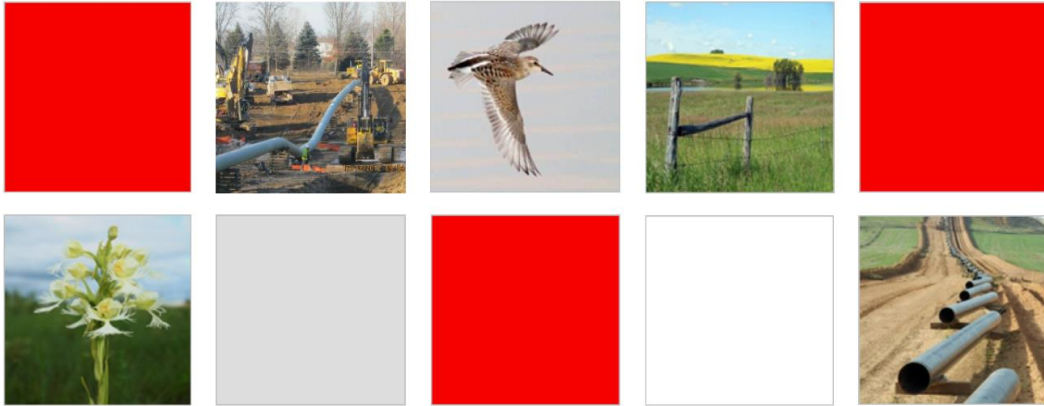
Please be formally notified that we will not be reviewing any report to this office without documentation that the manuscript filing fee was submitted per the permit requirements found in North Dakota Century Code 55-03-01 and North Dakota Administrative Code 40-02-02. Non-payment of manuscript filing fees will result in the permit being revoked.

Sincerely,

Paul R. Picha
Chief Archaeologist

Enclosure (1)

EXHIBIT C.2



Natural Resources and Wetland and Waterbody Report Spring Creek Pump Station McKenzie County, North Dakota

PREPARED BY

Merjent, Inc.
800 Washington Avenue North, Suite 315
Minneapolis, Minnesota 55401

FOR
ONEOK Bakken Pipeline, L.L.C.

November 5, 2015

EXECUTIVE SUMMARY

On October 27, 2015, Merjent, Inc. (Merjent) on behalf of ONEOK Bakken Pipeline, L.L.C. (OBPL), completed a natural resources and wetland and waterbody review for the Spring Creek Pump Station (Project) located in McKenzie County, North Dakota.

Merjent reviewed a 7.9-acre environmental review area for the Project, referred to as the review area. The review effort included a general land use assessment to identify unique or high-quality biological communities, threatened and endangered species, wetlands and waterbodies, identification of raptor nests (0.5-mile survey radius) and presence woody vegetation. Merjent conducted a desktop review of the area for presence of mapped wetlands and waterbodies, soils, land cover, and potential for federally listed species and designated critical habitat.

OBPL has conducted environmental review and field surveys in 2015 for other projects in the area for which the survey areas encompass a portion of the proposed pump station. A map showing the previously surveyed portion of the proposed pump station is provided in Figure 1. The portions of the pump station site that fall outside the previously surveyed corridor were analyzed using available desktop data and supportive field review of the Project site.

TABLE OF CONTENTS

EXECUTIVE SUMMARY	i
1.0 INTRODUCTION.....	1
1.1 REGULATORY BACKGROUND.....	1
Clean Water Act, Section 404	1
Endangered Species Act.....	3
Migratory Bird Treaty Act	3
Bald and Golden Eagle Protection Act	4
2.0 METHODS	4
2.1 DESKTOP ANALYSIS	4
2.2 FIELD SURVEY	4
Wetlands.....	5
Waterbodies.....	5
Land Use and Land Cover	5
3.0 RESULTS	5
3.1 WETLANDS AND WATERBODIES	5
3.2 FEDERALLY PROTECTED SPECIES.....	9
Interior Least Tern (<i>Sterna antillarum</i>): Endangered	9
Whooping Crane (<i>Grus americana</i>): Endangered	10
Pallid Sturgeon (<i>Scaphirhynchus albus</i>): Endangered	10
Gray Wolf (<i>Canis lupus</i>): Endangered.....	10
Piping Plover (<i>Charadrius melodus</i>): Threatened.....	10
Piping Plover Critical Habitat.....	10
Dakota Skipper (<i>Hesperia dacotae</i>): Threatened	11
Rufa Red Knot (<i>Calidris canutus rufa</i>): Threatened.....	11
Northern Long-eared Bat (<i>Myotis septentrionalis</i>): Threatened with Interim 4(d) rule	11
Sprague’s Pipit (<i>Anthus spragueii</i>): Candidate	12
Black-footed Ferret (<i>Mustela nigripes</i>): Experimental Population	12
3.3 LAND USE.....	12
3.4 RAPTOR SURVEY	12
3.5 TREES AND SHRUBS.....	12
4.0 SUMMARY.....	13
5.0 REFERENCES CITED	14

FIGURES

Figure 1	Aerial map with previously surveyed corridor	2
Figure 2	Topographic Map with NWI and NHD Data	7
Figure 3	SSURGO Hydric Soil Map	8

TABLES

Table 3-1	Federally Listed Endangered Species in McKenzie County, ND	9
-----------	--	---

SITE PHOTOS

Photo 1	View of Environmental Review Area looking west
Photo 2	View of Environmental Review Area looking north

1.0 INTRODUCTION

ONEOK Bakken Pipeline, L.L.C. (OBPL) is proposing the Spring Creek Pump Station (Project). For this project, OBPL is planning to develop approximately 1.8 acres of cultivated crop land (see Figure 1).

OBPL has conducted environmental review and field surveys in 2015 for other projects in the area for which the survey areas encompass a portion of the proposed pump station. A map showing the previously surveyed portion of the proposed pump station is provided in Figure 1. The portions of the pump station site that fall outside the previously surveyed corridor were analyzed using available desktop data and supportive field review of the Project site.

On October 27, 2015, Merjent, Inc. (Merjent), on behalf of OBPL, completed a desktop analysis and field review of a 7.9 acre environmental review area for the Project. The field review confirmed the findings of a desktop review performed for the Project for presence of mapped wetlands and waterbodies, soils, land cover, potential for federally listed species and designated critical habitat, identification of raptor nests (0.5-mile survey radius), and trees and woody vegetation.

1.1 REGULATORY BACKGROUND

The natural resource and wetland and waterbody review was conducted, in part, to diagnosis regulations applicable to the Project. Some of the regulations considered during the environmental review are discussed in this section of the report.

Clean Water Act, Section 404

Section 404 of the Clean Water Act prohibits the discharge of dredged or fill material into waters of the United States (WOUS) without a permit from the U.S. Army Corps of Engineers (USACE).

USACE Nationwide Permit 12

The USACE Nationwide Permit 12 authorizes the construction of utility lines and associated facilities in WOUS, provided the activity does not result in the permanent loss of greater than 0.5 acre of WOUS, including wetlands.

Nationwide Permit 12 requires that the permittee submit a pre-construction notification prior to commencing construction if any of the following criteria are met:

- The activity involves mechanized land clearing in a forested wetland;
- A Section 10 permit is required to cross a navigable waterbody (Rivers and Harbors Act)(33 United States Code 403);
- The utility line exceeds 500 feet in length through any single WOUS crossing;
- The utility line is placed within a jurisdictional area (i.e., WOUS) and runs parallel to a streambed that is within that jurisdictional area;
- Discharges result in the permanent loss of greater than 0.1 acre of WOUS;
- Permanent access roads are constructed above grade in WOUS for a distance of more than 500 feet; or
- Permanent access roads are constructed in WOUS with impervious materials.

ONEOK BAKKEN PIPELINE, L.L.C.
SPRING CREEK PUMP STATION
NATURAL RESOURCES AND WETLAND AND WATERBODY REPORT

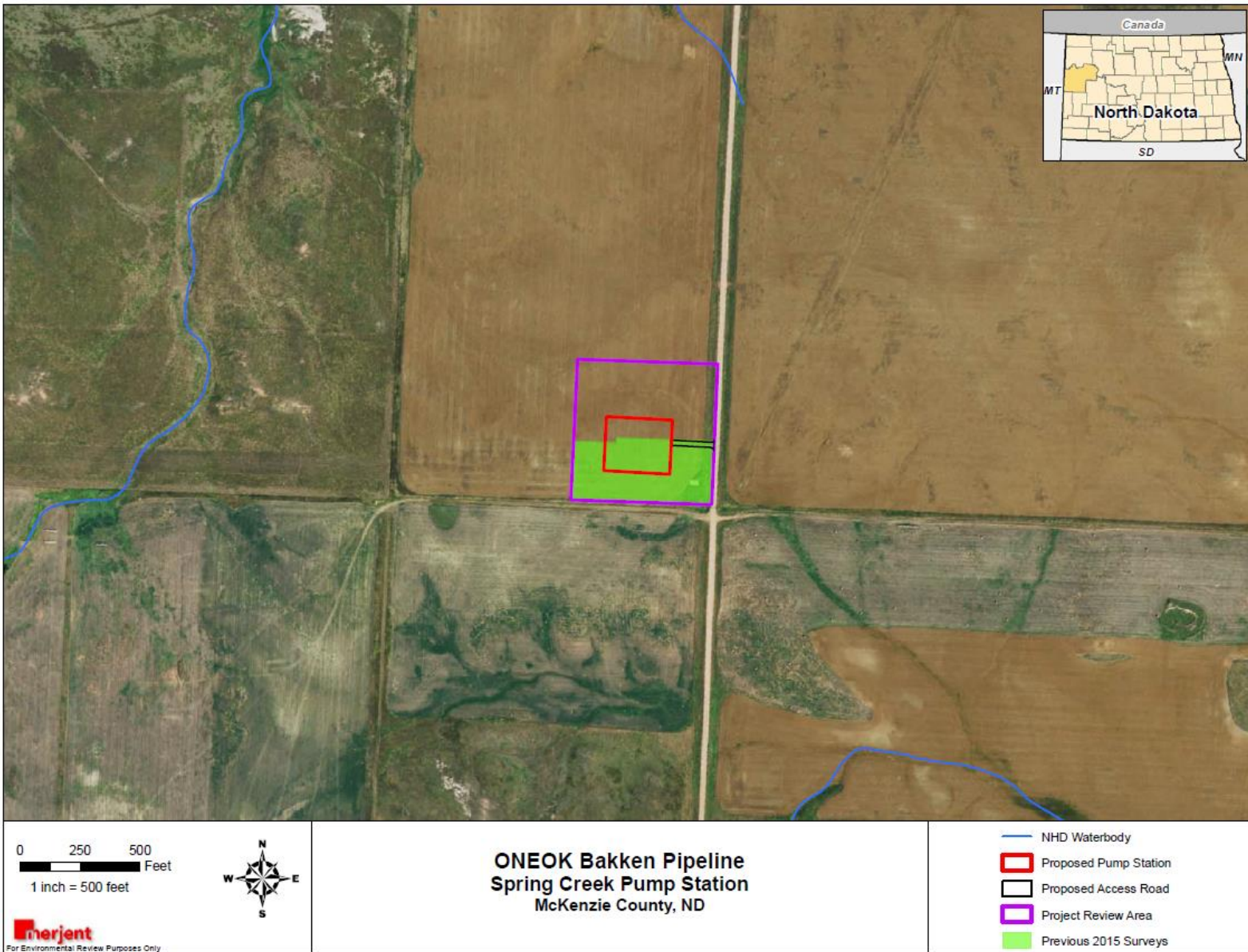


Figure 1: Aerial map and previously surveyed corridor

USACE Regional Conditions

The USACE has published several regional conditions for projects operating under nationwide permits in North Dakota. The regional conditions apply to wetlands classified as “fens,” waters adjacent to natural springs, the Missouri River, historic properties, and fish-spawning areas. None of these types of wetlands or waterbodies are present within the environmental review area.

Endangered Species Act

Section 7(a)(2) of the Endangered Species Act (ESA) states that each federal agency shall, in consultation with the Secretary of the U.S. Fish and Wildlife Service (FWS), ensure that any action they authorize, fund, or carry out is not likely to jeopardize the continued existence of a listed species or result in the destruction or adverse modification of designated critical habitat (50 CFR § 402). Issuance of a USACE permit is considered a federal action that triggers compliance with this provision of the ESA. Because no wetlands or waterbodies are present within the environmental review area, no permit from the USACE is required. Therefore, there is no trigger for Section 7(a)(2) of the ESA.

Under Section 10 of the ESA, an incidental take permit is required when non-federal activities will result in “take” of threatened or endangered wildlife. In accordance with this provision, an assessment was conducted to determine if suitable habitat is present for federally protected species within the Project area. A detailed analysis is provided in Section 3.2 of this report.

Migratory Bird Treaty Act

Migratory birds are federally protected by the Migratory Bird Treaty Act (MBTA), which prohibits the taking, killing, possession, and transportation of migratory birds, their eggs, parts, and nests, except when specifically permitted by regulations. In North Dakota, both native prairie and non-native grasslands provide breeding, nesting, foraging, brood-rearing, and dispersal habitat for many species of migratory birds. The primary breeding season for migratory birds in North Dakota is from February 1 to July 15.

Although the MBTA provides protection for all migratory birds, the FWS developed lists of Birds of Conservation Concern to foster proactive conservation actions by federal and state agencies and private parties by focusing first on species of concern (FWS, 2008). In addition, the United States is divided into Bird Conservation Regions; each region has a list of birds present or possibly present that are considered Birds of Conservation Concern. The Project is located within Region 17 – Badlands and Prairies (U.S. NABCI Committee, 2000).

Within the general Project area, birds generally nest from late March to early August, with the peak nesting season for migratory birds taking place between April 15 and July 30. Vegetative clearing during the nesting season would increase the potential for the Project to result in the take of a migratory bird. Typically, take from pipeline facility related construction is not of adult birds or juveniles that have fledged from the nest because they are mobile and avoid project-related activities; instead, take is typically of eggs and nestlings due to nest destruction and loss of young.

If work is to be conducted during the primary breeding season, a qualified biologist should conduct a bird/nest survey no more than 5-10 working days prior to starting work. If active nests are identified, construction should cease and a minimum buffer of 25 feet around active nests should be maintained to avoid take. For raptor nests, spatial buffers and seasonal timing restrictions

should be placed around active nests depending upon the species. A qualified biologist may adjust the buffered distance in coordination with the FWS. The buffer should be maintained as construction resumes until the nests are no longer active.

Bald and Golden Eagle Protection Act

Bald and golden eagles are protected by both the MBTA and the Bald and Golden Eagle Protection Act (BGEPA). The BGEPA prohibits the take of bald or golden eagle adults, juveniles, or chicks including their parts, nests, or eggs without a permit. Take is defined by the BGEPA as to pursue, shoot, shoot at, poison, wound, kill, capture, trap, collect, molest, or disturb. The BGEPA also addresses impacts resulting from human-induced alterations occurring around previously used nesting sites.

No bald or golden eagles or their nests were observed during field surveys. However, if construction is planned to commence during the primary nesting season, aerial surveys should be conducted prior to construction (between March 1 and May 15, before leaf-out) to identify raptor nests within approximately 1 mile of the Project.

Spatial buffers and seasonal timing restrictions should be placed around active nests. For bald eagles, a buffer of 0.5 mile and a seasonal timing restriction of February 1 to July 15 should be maintained. For golden eagles, a buffer of 0.5 mile and a seasonal timing restriction of January 15 to July 31 should be maintained. No eagle nest may be destroyed by Project activities without a permit from the FWS, regardless of whether the nest is active or inactive, per the BGEPA.

2.0 METHODS

2.1 DESKTOP ANALYSIS

Merjent reviewed U.S. Geological Survey (USGS) 7.5 minute topographic quadrangle maps; National Wetlands Inventory (NWI) maps; National Hydrography Data (NHD); and current and historical aerial photographs of the Project area using Google Earth. The U.S. Department of Agriculture's (USDA) Natural Resources Conservation Service (NRCS) web soil survey was also reviewed.

A review of the FWS Endangered Species Information, Planning, and Conservation System (IPaC) website and the FWS North Dakota Field Office website was conducted on October 29, 2015, to determine the potential for listed species and critical habitat that may be present in McKenzie County, North Dakota (see Section 3.2).

2.2 FIELD SURVEY

A field visit to supplement and confirm the findings of the desktop analysis was conducted on October 27, 2015. This visit covered the environmental review area, but was especially focused on the northern portion of the site which falls outside the area previously surveyed in 2015.

For the portion of the site surveyed by previous field surveys in 2015 (refer to Figure 1), field surveys were conducted as discussed below.

Wetlands

The presence/absence of wetlands was identified in the field using routine on-site delineation methods in accordance with the USACE *Wetlands Delineation Manual* (USACE, 1987) and the *Regional Supplement to the Corps of Engineers Wetland Delineation Manual: Great Plains Region (Version 2.0)* (USACE, 2010). These criteria include characterization of vegetation, hydrology, and soils at the site. Wetlands are defined by the USACE as “areas that are inundated or saturated by surface or groundwater at a frequency and duration sufficient to support, and under normal circumstances do support, a prevalence of vegetation typically adapted for life in saturated soil conditions.” For an area to be delineated as a regulated wetland, the vegetative, hydrologic, and soil characteristics must be consistent with federal classification criteria. More than 50 percent of the vegetative cover must consist of obligate and facultative wetland species. There must be evidence of periodic or permanent ground inundation, and the soils must exhibit hydric characteristics. The USACE *National Wetlands Plant List* was used to describe the taxonomy of wetland plants surveyed and their wetland indicator status. Determination of wetland type was based on the classification system developed by Cowardin et al. (1979).

Waterbodies

Delineation of ordinary high water marks (OHWM) was conducted in accordance with the *Ordinary High Water Mark Delineation Manual for Section 404 Waters* (Harris County Flood Control Board, 2005). Delineation of the OHWM in both riverine and lake settings includes assessment of vegetation, soils, hydrology, and physical indicators. The USACE defines OHWM as: “That line on the shore established by the fluctuations of water and indicated by physical characteristics such as a clear, natural line impressed on the bank, shelving, changes in the character of soil, destruction of terrestrial vegetation, the presence of litter and debris, or other appropriate means that consider the characteristics of the surrounding areas.”

Land Use and Land Cover

Field surveys included an assessment for the presence of suitable habitat for federally listed species, an assessment of current land use and cover, and presence of woodland and shrubland. A raptor survey was conducted for the Project using a 0.5-mile line-of-sight methodology.

3.0 RESULTS

3.1 WETLANDS AND WATERBODIES

Review of NWI mapping and NHD mapping indicated that no mapped wetlands or waterbodies are present within the Project environmental review area (see Figure 2). Review of USDA NRCS Web Soil Survey data shows that all soils within the environmental review area are 100 percent non-hydric (see Figure 3).

The wetland and waterbody field review conducted by Merjent verified that no wetlands or waterbodies are present within the environmental review area. Other previous 2015 wetland and waterbody surveys verified that no wetlands or waterbodies are present within the previously surveyed area shown on Figure 1. Wetland hydrology was not evident by any primary or secondary indicators including soil saturation within 12 inches of the surface, drainage patterns within the wetlands, geomorphic position, or water stained leaves. All plant communities identified

ONEOK BAKKEN PIPELINE, L.L.C.
SPRING CREEK PUMP STATION
NATURAL RESOURCES AND WETLAND AND WATERBODY REPORT

by the field survey were upland communities and either failed to display hydric soil indicators, or meet wetland hydrology or vegetation criteria, as defined by the USACE (2010).

No OHWMs indicating presence of ephemeral, intermittent, or perennial waterbodies were identified during the field survey. No features such as a clear, natural line impressed on the bank, shelving, changes in the character of soil, destruction of terrestrial vegetation, presence of litter and debris, or other such characteristics were identified that would indicate water level fluctuations.

ONEOK BAKKEN PIPELINE, L.L.C.
 SPRING CREEK PUMP STATION
 NATURAL RESOURCES AND WETLAND AND WATERBODY REPORT

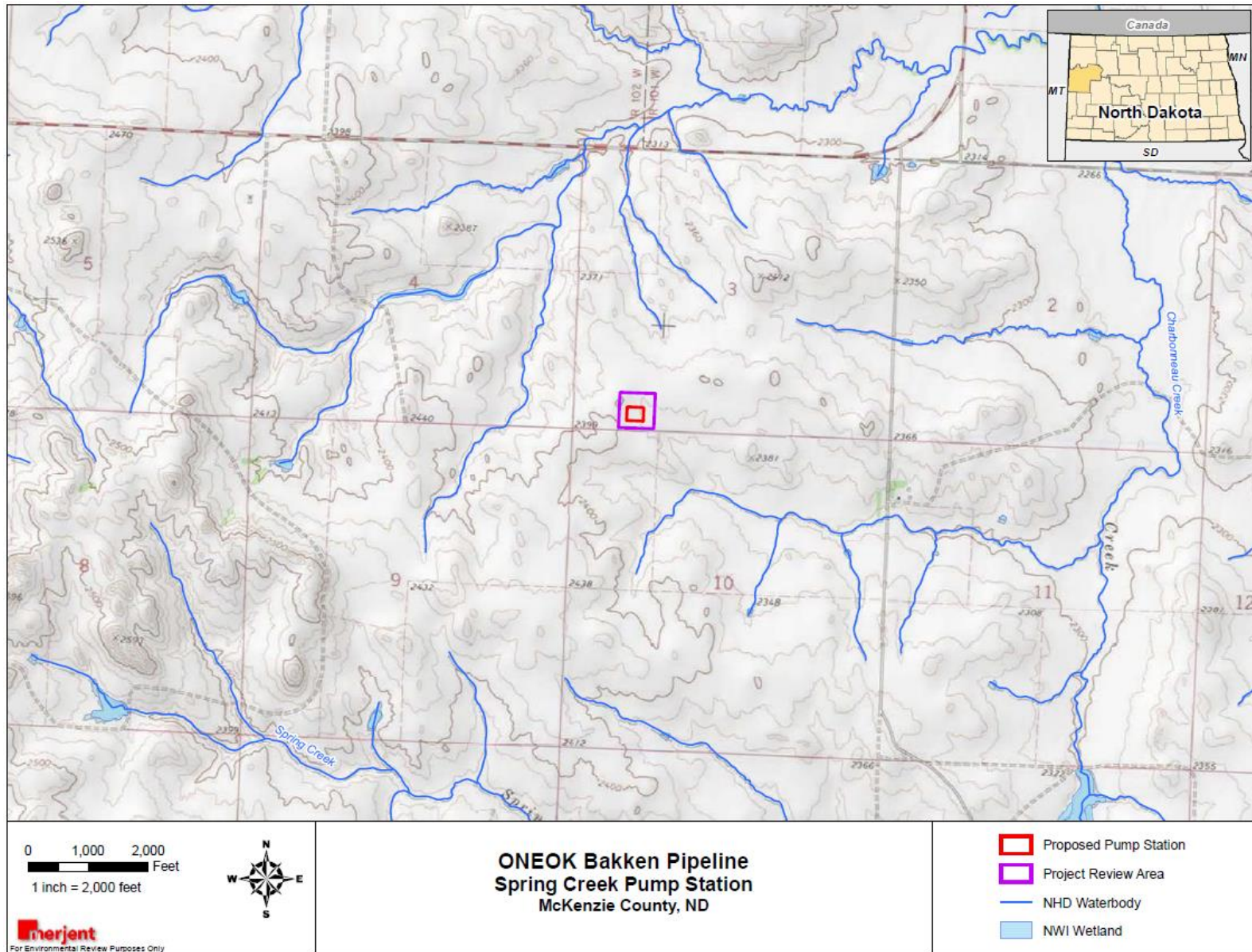


Figure 2: Topographic Map with NWI and NHD Data

ONEOK BAKKEN PIPELINE, L.L.C.
 SPRING CREEK PUMP STATION
 NATURAL RESOURCES AND WETLAND AND WATERBODY REPORT

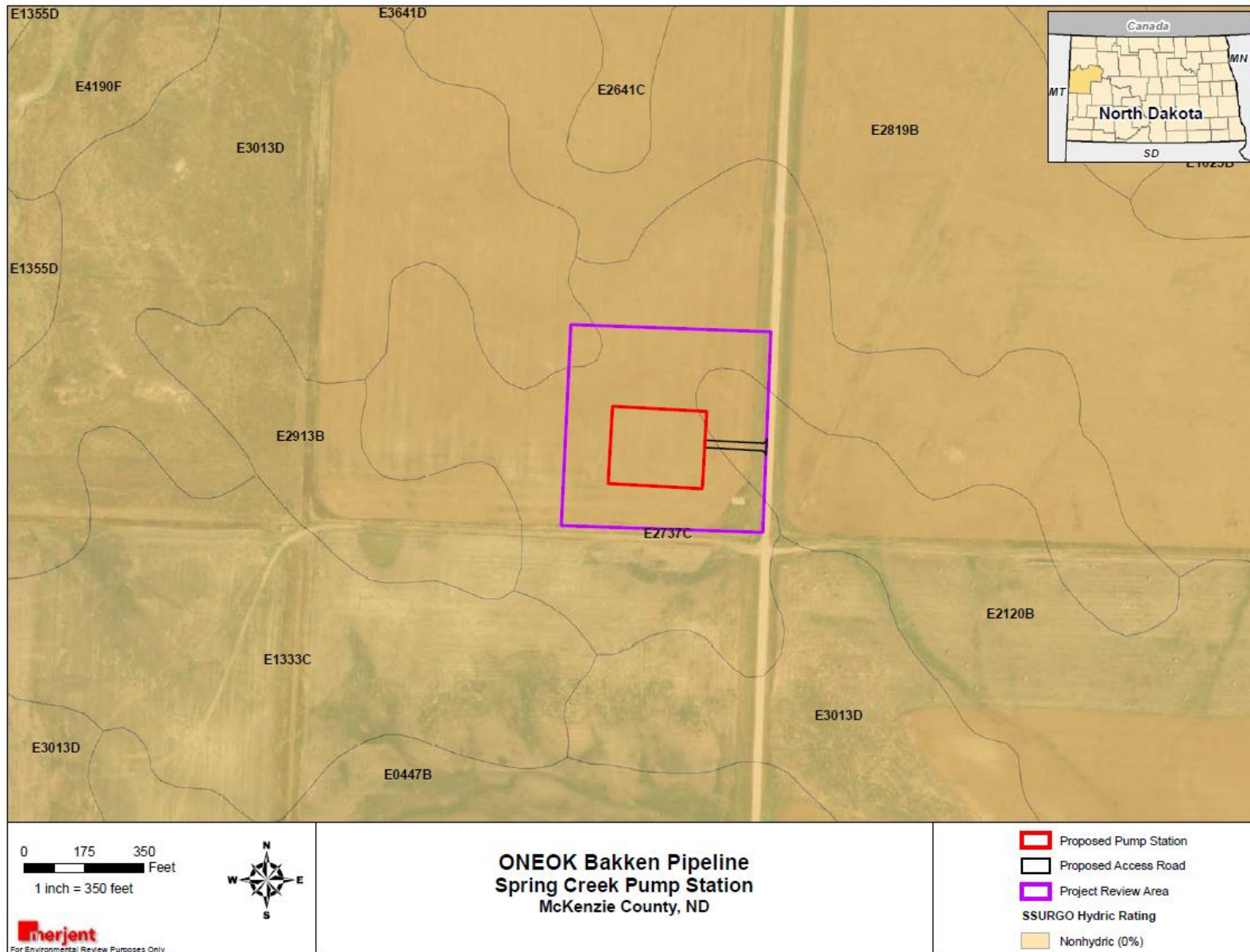


Figure 3: SSURGO Hydric Soil Map

3.2 FEDERALLY PROTECTED SPECIES

A review of the FWS IPaC website and the FWS North Dakota Field Office website was conducted on October 29, 2015, to determine the potential for listed species and critical habitat that may be present in McKenzie County.

A field review was conducted within the environmental review area to identify the presence or absence of suitable habitat for listed species and rare or unique plant communities. No suitable habitat was observed at the time of the on-site assessment. Detailed descriptions of land use and land cover within the environmental review area are provided in Section 3.3 of this report.

Table 3.2-1 provides a summary of protected species in McKenzie County. A brief description of each species and their preferred habitat is also provided below.

Table 3.2-1 Federally Listed Endangered Species in McKenzie County, ND	
Common Name	Status
Interior Least Tern	Endangered
Whooping Crane	Endangered
Pallid Sturgeon	Endangered
Gray Wolf	Endangered
Piping Plover (Northern Great Plains Population)	Threatened
Dakota Skipper	Threatened
Rufa Red Knot	Threatened
Northern Long-eared Bat ¹	Threatened
Sprague's Pipit	Candidate
Black-footed ferret	Experimental Population
Piping Plover Critical Habitat	Nearest designated critical habitat is approximately 17.4 miles north and east of the Project area along the Missouri River
¹ The northern long-eared bat (NLEB) was listed as threatened (with Interim 4(d) Rule) on April 2, 2015. Based on Merjent's initial review of this new listing, the NLEB will not have any specific protection outside of areas within 150 miles of a documented White Nose Syndrome case. As of this writing, the entire state of North Dakota falls outside of this range.	

Interior Least Tern (*Sterna antillarum*): Endangered

The interior least tern is known to nest on midstream sandbars along the Yellowstone and Missouri River systems in North Dakota. The species constructs bowl-shaped depression nests on sparsely vegetated sandbars and sandy beaches during the nesting period, which occurs between mid-May and mid-August. Nesting adults have been documented to travel 7.5 miles or more from their nest sites to forage in wetlands or riverine habitat. The Project is located approximately 23 miles from the Missouri River. No potential habitat was observed within the Project area during the on-site field survey.

Whooping Crane (*Grus americana*): Endangered

The whooping crane's preferred habitat includes large marshy wetlands where whooping cranes would be likely to roost and croplands where cranes may feed. The whooping crane has spring (late-April through mid-June) and fall (mid-September through mid-November) migration periods in North Dakota. Because Project activities will occur in the vicinity of suitable whooping crane stopover habitat (croplands), OBPL proposes to do one of the following to avoid or minimize impacts on the whooping crane:

1. Conduct Project activities outside the whooping cranes spring and fall migration periods; or
2. As part of pre-construction activities, OBPL will conduct environmental training with the contractor and construction crews and provide details on this species. Should a whooping crane be sighted within 1 mile of the Project area, OBPL will suspend construction at that location and contact the FWS immediately.

Pallid Sturgeon (*Scaphirhynchus albus*): Endangered

Pallid sturgeon are found in the Missouri River and parts of the Yellowstone River in North Dakota. They are adapted to living close to the bottom of silty river systems, typically in turbid, fast-moving water. Weighing up to 85 pounds, pallid sturgeons are long lived, with individuals possibly reaching 50 years of age. The Project does not include any suitable pallid sturgeon habitat and is located over 23 miles from the Missouri River.

Gray Wolf (*Canis lupus*): Endangered

Likely habitat for the gray wolf is forested areas in north-central and northeast North Dakota. Most wolf experts agree that wolves spotted in North Dakota are probably lone individuals in search of a new home. These individuals are highly mobile and would likely avoid the Project area if present. In addition, the Project activities do not occur in or near any forested areas.

Piping Plover (*Charadrius melodus*): Threatened

Suitable nesting habitat for piping plovers in the Missouri River system is characterized as sparsely vegetated channel sandbars, sand and gravel beaches on islands, temporary pools on sandbars and islands, and island margins that interface with the river channel, all protected from disturbance. The Project is located over 23 miles from the Missouri River system.

Piping Plover Critical Habitat

Critical habitat for the northern Great Plains piping plover has been designated on alkali lakes and wetlands, the Yellowstone River, and Missouri River in North Dakota. The physical and biological features that are essential to the conservation of the species, referred to as the primary constituent elements, require special consideration for protection. In riverine habitat, these elements include sparsely vegetated channel sandbars, sand and gravel beaches on islands, temporary pools on sandbars and islands, and island margins that interface with the river channel, all protected from disturbance. The nearest designated piping plover critical habitat (associated with the Missouri River) is over 23 miles from the Project.

Dakota Skipper (*Hesperia dacotae*): Threatened

Dakota skippers require untilled, high-quality prairie. Habitat preferred by the skipper is wet-mesic prairie with little topographic relief on near-shore glacial lake deposits and in rolling native-prairie terrain over gravelly glacial moraine deposits. Larvae feed on grasses, favoring little bluestem (*Schizachyrium scoparium*). Adults commonly feed on nectar of flowering native forbs such as harebell (*Campanula rotundifolia*), wood lily (*Lilium philadelphicum*), and purple coneflower (*Echinacea angustifolia*). This species is not known to disperse widely and has low mobility, dispersing a maximum of 0.6 mile. The species is threatened by conversion of native prairie to cultivated agriculture or shrublands, over-grazing, invasive species, gravel mining, and inbreeding.

The proposed Project site is cultivated cropland and has been managed as such for more than 20 years. Review of aerial photos and soil survey data indicate that untilled, high-quality prairie dominated by native grasses that contain a high diversity of native forbs are not present within the Project site or within 0.5 mile of the site. Desktop analysis supported with field studies have concluded that no suitable habitat is present within the Project area; therefore, impacts on the Dakota skipper are not anticipated.

Rufa Red Knot (*Calidris canutus rufa*): Threatened

The red knot is protected as threatened under the ESA, effective January 12, 2015. When migrating through interior North America, red knots largely rely on exposed substrate at wetland edges for stopover habitat. The suitability of a wetland for red knots depends on water levels and may vary annually. In addition, red knots have been reported to forage in cultivated fields when migrating through the interior.

Because Project activities will occur in the vicinity of suitable stopover habitat (i.e., croplands), OBPL proposes to do one of the following to avoid or minimize impacts on the red knot:

1. Conduct Project activities outside the red knots spring and fall migration periods, which are May 15 to June 15 (spring migration) and July 15 to September 15 (fall migration) in North Dakota; or
2. As part of pre-construction activities, OBPL will conduct environmental training with the contractor and construction crews and provide details on this species. Should a red knot be sighted within 1 mile of the Project area, OBPL will suspend construction at that location and contact the FWS immediately.

Northern Long-eared Bat (*Myotis septentrionalis*): Threatened with Interim 4(d) rule

The northern long-eared bat (NLEB) ranges across much of the eastern and central United States. During summer, the NLEB roosts singly or in colonies underneath bark, in cavities, or in crevices of both live and dead trees. Males and non-reproductive females may also roost in cooler places, such as caves and mines. This bat seems opportunistic in selecting roosts using tree species based on suitability to retain bark or provide cavities or crevices. It has also been found, rarely, roosting in structures like barns and sheds. NLEB spends winter hibernating in caves and mines.

NLEB was officially listed as threatened (with Interim 4[d] Rule) on April 1, 2015. Based on initial review of this new listing, the NLEB will not have any specific protection outside of areas within 150 miles of a documented White Nose Syndrome case. As of this writing, the entire state of North Dakota falls outside of this range.

Sprague's Pipit (*Anthus spragueii*): Candidate

The Sprague's pipit is a candidate species, endemic to the northern Great Plains native short-to-mixed grass prairie, and sensitive to fragmentation and conversion of grassland habitat. Sprague's pipits prefer relatively large prairie patches of at least approximately 72 acres, with larger patches of at least 360 acres preferred. Sprague's pipits arrive on the breeding grounds from the third week of April to mid-May. Project activities do not occur in an area of suitable habitat for this species.

Black-footed Ferret (*Mustela nigripes*): Experimental Population

Black-footed ferrets inhabit the extensive prairie dog complexes of the Great Plains, typically composed of several smaller colonies close to one another that provide a sustainable prey base. The *Black-footed Ferret Survey Guidelines for Compliance with the Endangered Species Act* published by the FWS (1989) states that ferrets require black-tailed prairie dog (*Cynomys ludovicianus*) towns or complexes greater than 80 acres in size, and a town of this dimension may be important for ferret recovery efforts. This species has not been observed in the wild for more than 20 years and is not anticipated to be impacted by the proposed Project.

Additionally, the North Dakota Parks and Recreation Department Natural Heritage biological conservation database was recently reviewed in September 2015 to determine if any plant or animal species of concern or other significant ecological communities are known to occur near another OBPL project which encompasses the environmental review area for the Spring Creek Pump Station. It was found that no plant or animal species of concern or other significant ecological communities are known to occur within the Spring Creek Pump Station site.

3.3 LAND USE

Land use within the environmental review area was assessed by field surveys to identify whether unique or high-quality biological communities or habitat for federally listed species was present. This assessment determined that the environmental review area was comprised entirely of cultivated cropland and was planted in wheat (*Triticum aestivum*), corn (*Zea mays*), and sunflower (*Helianthus spp.*). No woody vegetation was present within the environmental review area.

3.4 RAPTOR SURVEY

No primary or secondary signs of raptors including bald or golden eagles or active or inactive nests were observed during field surveys within a 0.5-mile radius of the environmental survey corridor.

3.5 TREES AND SHRUBS

As stated in Section 3.3 of this report, no trees, shrubs or woody vegetation were present within the environmental review area.

4.0 SUMMARY

On October 27, 2015, Merjent, on behalf of OBPL, completed a desktop analysis and field review the environmental review area for the Spring Creek Pump Station Project located in McKenzie County, North Dakota.

Merjent reviewed a 7.9-acre environmental review area for the Project. The field effort included a general land use assessment to identify unique or high-quality biological communities, habitat available for threatened and endangered species, wetlands and waterbodies, identification of raptor nests (0.5-mile survey radius), and presence of trees and woody vegetation.

Desktop analysis and field surveys conducted for the Project identified the following:

1. No wetlands or waterbodies are present within the environmental review area.
2. No primary or secondary signs of raptors, including bald or golden eagles, were identified.
3. No active or inactive raptor nests were identified.
4. No unique or high-quality natural communities or habitat suitable for listed species were present.
5. The vegetation within the environmental review area consisted entirely of cultivated cropland.
6. No trees, shrubs or woody vegetation were present within the environmental review area.

5.0 REFERENCES CITED

- Bryce, S., J.M. Omernik, D.E. Pater, M. Ulmer, J. Schaar, J. Freeouf, R. Johnson, P. Kuck, and S.H. Azevedo. 1998. Ecoregions of North Dakota and South Dakota. Northern Prairie Wildlife Research Center Online. Available at: <http://www.npwrc.usgs.gov/resource/habitat/ndsdeco/index.htm> (Version 30NOV1998). Accessed September 23, 2015.
- Environmental Laboratory. 1987. *Corps of Engineers Wetland Delineation Manual*. Technical Report Y-87-1. Vicksburg, Mississippi: U.S. Army Engineer Waterways Experiment Station.
- Hagen, S.K., P.T. Isakson, and S.R. Dyke. 2005. *North Dakota Comprehensive Wildlife Conservation Strategy*. Bismarck: North Dakota Game and Fish Department.
- Natural Resources Conservation Service (NRCS). 2014. Web Soil Survey. Soil Survey Staff, Natural Resources Conservation Service, U.S. Department of Agriculture. Available at: <http://websoilsurvey.nrcs.usda.gov>. Accessed September 23, 2015.
- Omernik, J., & Griffith, G. 2012. Ecoregions of the United States-Level III (EPA). Available at: <http://eearth.org/view/article/152242>. Accessed September 23, 2015.
- . 2008. Ecoregions of North Dakota and South Dakota (EPA). Available at: <http://www.eearth.org/view/article/152149>. Accessed September 23, 2015.
- U.S. Army Corps of Engineers (USACE). 2010. *Regional Supplement to the Corps of Engineers Wetland Delineation Manual: Great Plains Region Version 2.0*. Edited by J.S. Wakeley, R.W. Lichvar, and C.V. Noble. ERDC/EL TR-08-12. Vicksburg, Mississippi: U.S. Army Engineer Research and Development Center.
- U.S. Fish and Wildlife Service (FWS). 1978. Reclassification of the gray wolf in the United States and Mexico, with determination of critical habitat in Michigan and Minnesota. *Federal Register* 43(47):9607–9615.
- . 1985. Endangered and threatened wildlife and plants: determination of endangered and threatened status for the piping plover. *Federal Register* 50(238):50726–50734.
- . 1985. Interior population of the least tern. *Federal Register* 50 FR 21784–21792. May 28, 1985.
- . 1988. *Great Lakes and Northern Great Plains Piping Plover Recovery Plan*. Twin Cities, Minnesota: U.S. Fish and Wildlife Service.
- . 1990. *Interior Population of the Least Tern Recovery Plan*. Twin Cities, Minnesota: U.S. Fish and Wildlife Service.
- . 1990. Endangered and threatened wildlife and plants; Determination of endangered status for the pallid sturgeon. *Federal Register* 55(173):36641–36647.

ONEOK BAKKEN PIPELINE, L.L.C.
SPRING CREEK PUMP STATION
NATURAL RESOURCES AND WETLAND AND WATERBODY REPORT

- . 2002. Designation of critical habitat for the northern Great Plains breeding population of the piping plover; final rule. Federal Register 67(176):57637–57717.
- . 2007. *Pallid Sturgeon (Scaphirhynchus albus) 5-year Review Summary and Evaluation*. Billings, Montana: U.S. Fish and Wildlife Service, Pallid Sturgeon Recovery Coordinator.
- . 2012. National Wetlands Inventory: Wetlands Online Mapper. Available at: <http://wetlandsfew.er.usgs.gov/wtlnds/launch.html>. Accessed September 23, 2015.
- . 2012. Piping plover. Available at: <http://www.fws.gov/mountainprairie/species/birds/pipingplover>. Accessed September 23, 2015.
- . 2013. Gray wolf. Available at: <http://ecos.fws.gov/speciesProfile/profile/speciesProfile.action?spcode=A00D>. Accessed September 23, 2015.
- . 2013. Whooping crane. Available at: <http://ecos.fws.gov/speciesProfile/profile/speciesProfile.action?spcode=B003>. Accessed September 23, 2015.
- . 2013. Least tern (interior population). Available at: <http://www.fws.gov/southwest/es/oklahoma/lestern.htm>. Accessed September 23, 2015.
- . 2013. Northern Long-eared Bat Fact Sheet. Midwest Endangered Species. Available at: <http://www.fws.gov/midwest/endangered/mammals/nlba/nlbaFactSheet.html>. Accessed September 23, 2015.
- . 2013. Endangered and Threatened Wildlife and Plants; Proposed Threatened Status for the Rufa Red Knot (*Calidris canutus rufa*). Federal Register 78(189):60024–60098.
- . Rufa Red Knot Ecology and Abundance. Supplement to Endangered and Threatened Wildlife and Plants; Proposed Threatened Status for the Rufa Red Knot (*Calidris canutus rufa*). Docket No. FWS–R5–ES–2013–0097; RIN 1018–AY17. Accessed at http://www.fws.gov/northeast/redknot/pdf/20130923_REKN_PL_Supplement02_Ecology%20Abundance_Final.pdf.
- . 2015. Northern Long-eared Bat Interim 4(d) Rule. White-Nose Syndrome Buffer Zone Around WNS/Pd Positive Counties/Districts. Available at <http://www.fws.gov/midwest/nleb/documents/WNSBufferZone.pdf>. Accessed April, 2015.
- . 2015. Information for Planning and Conservation, Environmental Conservation Online System. Available at: <http://ecos.fws.gov/ipac/wizard/chooseLocation!prepare.action>. Accessed September 23, 2015.
- . 2015. County occurrence of endangered, threatened, and candidate species and designated critical habitat in North Dakota. Available at: http://www.fws.gov/northdakotafieldoffice/county_list.htm. Accessed September 23, 2015.

SITE PHOTOS

ONEOK BAKKEN PIPELINE, L.L.C.
SPRING CREEK PUMP STATION
NATURAL RESOURCES AND WETLAND AND WATERBODY REPORT



Photo 1: View of Environmental Review Area looking west



Photo 2: View of Environmental Review Area looking north