

**OASIS MIDSTREAM SERVICES, LLC
WILD BASIN TO JOHNSONS CORNER PIPELINE CONSTRUCTION INSPECTION REPORT**

GENERAL INFORMATION

Inspector Name: Dave Hennen, ProSource Technologies	Inspection Date: 6-14-16 and 6-15-16	Report Number: PU-15-733
Weather: Sunny, 70 degrees F	Precipitation: 0.00	

CONSTRUCTION INSPECTION

Executive Summary

ProSource Technologies, LLC (ProSource) conducted a construction inspection on behalf of the North Dakota Public Service Commission for the Oasis Midstream Services LLC (Oasis) Wild Basin to Johnson's Corner Pipeline Project (Project) on June 14, 2016 and June 15, 2016. The Project involves the construction of approximately 19 miles of 10.75-inch outside diameter pipeline and associated facilities for the transmission of crude oil. Construction of the project commenced on April 11, 2016. ProSource conducted the topsoil removal inspection on April 12, 2016. According to the Oasis Monthly Progress Report dated June 9, 2016, construction of the Project was approximately 65% complete. The majority of the concerns identified during the construction inspections on June 14, 2016 and June 15, 2016 related to erosion control devices and repairs to exclusion fencing. General recommendations were communicated regarding these concerns and the need for additional erosion control in sloped areas adjacent to wetlands.

Inspection Observations

Mr. Dave Hennen, ProSource Technologies' Director of Environmental Services, met with Mr. Denny Hooper, Chief Inspector, on June 14, 2016 and with Mr. Alex Sletto, Oasis Inspector, on June 15, 2016 for the construction inspections. During the morning of June 14, 2016, the construction contractor decided to suspend construction activities for the day because of wet conditions resulting from a storm the previous night. The construction inspection was initiated on June 14, 2016 at Station 0+00 and continued to approximate Station 930+00. At the time that Mr. Hennen and Mr. Hooper began the inspection of the right of way, most areas along the Project were accessible without causing impacts to wet areas. The following day, Mr. Hennen and Mr. Sletto continued the inspection from approximate Station 930+00 to the end of the Project and along areas that were not accessible the previous day.

The condition of right of way from Station 0+00 to approximate Station 203+00 (approximately 4 miles) was considered rough grade, as the trench was backfilled and the topsoil was restored, awaiting final grading (Photos 1 and 2). A general observation was made and discussed with Mr. Hooper regarding the lack of erosion control in areas of the rough grade. The survey right of way stakes and most of the erosion control devices had been removed from the areas that had undergone rough grade, making it difficult to determine if restoration activities were within the approved work areas (Photos 3 and 4). In the areas where stakes were in place, Mr. Hennen observed that construction activities were occurring within the approved work areas (Photos 5 and 6). Mr. Hennen made recommendations to Mr. Hooper regarding the placement of erosion control devices in sloped areas adjacent to wetlands (Photos 7 and 8). Mr. Hooper said he would communicate this to the contractor.

In several areas, silt fence and straw waddle erosion control devices were in need of repair (Photos 9, 10, 11, 12). Also in need of repair at most locations was the orange exclusion fencing installed around open excavations (Photos 13, 14, 15, 16). Mixing of topsoil and subsoil piles was observed at approximate Stations 223+92 and 630+00 (Photos 17 and 18). Mr. Hennen also observed areas with correct spacing between topsoil and subsoil piles (Photos 19). In addition, erosion control was recommended for the area adjacent to Wetland 27 at approximate Station 708+00 (Photo 20).

53 **PU-15-733** Filed: 6/27/2016 Pages: 13
Construction Inspection Report

ProSource Technologies, Inc.

Dave Hennen

SIGNATURE

Inspector Name: Dave Hennen	Signature: <i>Dave Hennen</i>	Date: 6-24-16
-----------------------------	-------------------------------	---------------

OASIS MIDSTREAM SERVICES, LLC
WILD BASIN TO JOHNSONS CORNER PIPELINE CONSTRUCTION INSPECTION REPORT

DAILY CONSTRUCTION ACTIVITIES

Concerns and Corrective Actions

- Lack of erosion control devices in rough grade areas
 - Install erosion control devices after final cleanup and maintain until final restoration (70% revegetation) is complete.

- Silt fence and straw waddle repair
 - Regularly monitor erosion control and repair or replace if necessary.

- Exclusion fence repair
 - Regularly monitor exclusion fence and repair or replace if necessary.

- Mixing of topsoil and subsoil piles
 - Allow for space between topsoil and subsoil piles to avoid mixing.

- Erosion control adjacent to Wetland 27
 - Install erosion control to minimize soil and silt from entering the wetland.

SIGNATURE

Inspector Name: Dave Hennen	Signature: <i>Dave Hennen</i>	Date: 6-24-16
-----------------------------	-------------------------------	---------------

OASIS MIDSTREAM SERVICES, LLC
WILD BASIN TO JOHNSONS CORNER PIPELINE

CONSTRUCTION INSPECTION REPORT

PHOTOGRAPHS



Photo 1 – Approx. Station 33+00. View of rough grade along the first 4 miles.



Photo 2 – Approx. Station 70+00. View of rough grade along the first 4 miles.

PHOTOGRAPHS



Photo 3 – Approx. Station 79+00. View of rough grade area with removed right of way stakes.



Photo 4 – Approx. Station 80+00. View of rough grade area with removed right of way stakes.

PHOTOGRAPHS



Photo 5 – Approx. Station 274+00. View of construction activities within the approved right of way.



Photo 6 – Approx. Station 910+00. View of construction activities within the approved right of way.

PHOTOGRAPHS



Photo 7 – Approx. Station 93+00. View of slope and wetland; inspector recommended erosion control.



Photo 8 – Approx. Station 93+00. View of slope and wetland; inspector recommended erosion control.

PHOTOGRAPHS



Photo 9 – Approx. Station 300+00. View of erosion control requiring repair.



Photo 10 – Approx. Station 328+00. View of erosion control requiring repair.

PHOTOGRAPHS



Photo 11 – Approx. Station 604+00. View of erosion control requiring repair.



Photo 12 – Approx. Station 612+00. View of erosion control requiring repair.

OASIS MIDSTREAM SERVICES, LLC
WILD BASIN TO JOHNSONS CORNER PIPELINE

CONSTRUCTION INSPECTION REPORT



Photo 13 – Approx. Station 212+57. View of exclusion fence requiring repair.



Photo 14 – Approx. Station 342+00. View of exclusion fence requiring repair.

OASIS MIDSTREAM SERVICES, LLC
WILD BASIN TO JOHNSONS CORNER PIPELINE

CONSTRUCTION INSPECTION REPORT



Photo 15 – Approx. Station 571+56. View of exclusion fence requiring repair.



Photo 16 – Approx. Station 630+00. View of exclusion fence requiring repair.



Photo 17 – Approx. Station 223+92. View of mixing topsoil and subsoil piles.



Photo 18 – Approx. Station 630+00. View of mixing topsoil and subsoil piles.

OASIS MIDSTREAM SERVICES, LLC
WILD BASIN TO JOHNSONS CORNER PIPELINE

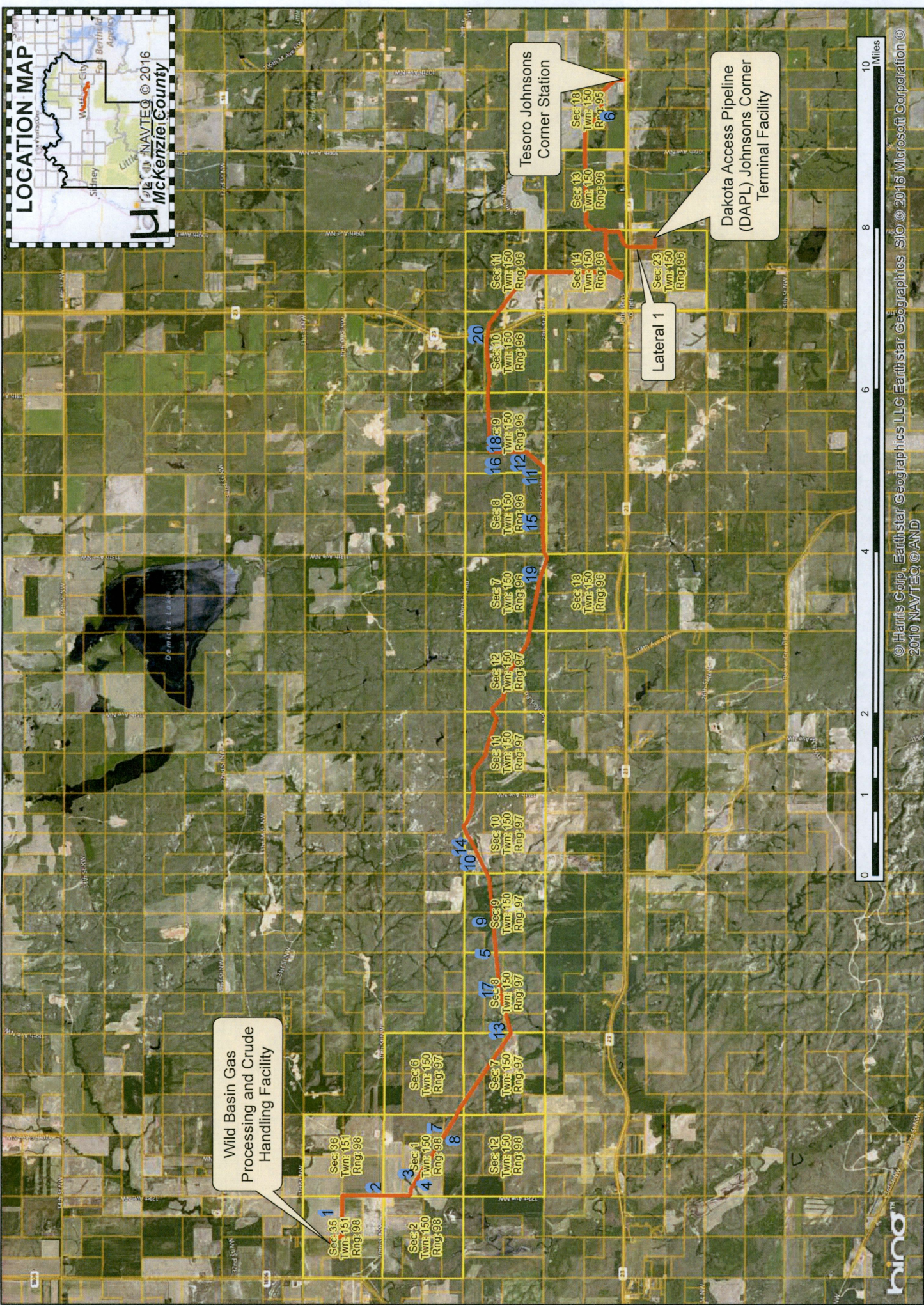
CONSTRUCTION INSPECTION REPORT



Photo 19 – Approx. Station 526+76. View of separated topsoil and subsoil piles.



Photo 20 – Approx. Station 708+00. View of recommended erosion control adjacent to wetland.



Wild Basin Gas Processing and Crude Handling Facility

Tesoro Johnsons Corner Station

Lateral 1

Dakota Access Pipeline (DAPL) Johnsons Corner Terminal Facility



© Harris Corp, Earthstar Geographics LLC, Earthstar Geographics, SIB © 2016 Microsoft Corporation © 2010 NAVTEQ © AND

- LEGEND**
- Oasis Pipeline
 - Photo Location
 - Parcel Boundary
 - PLS



North Dakota Public Service Commission Construction Inspection Photo Map

