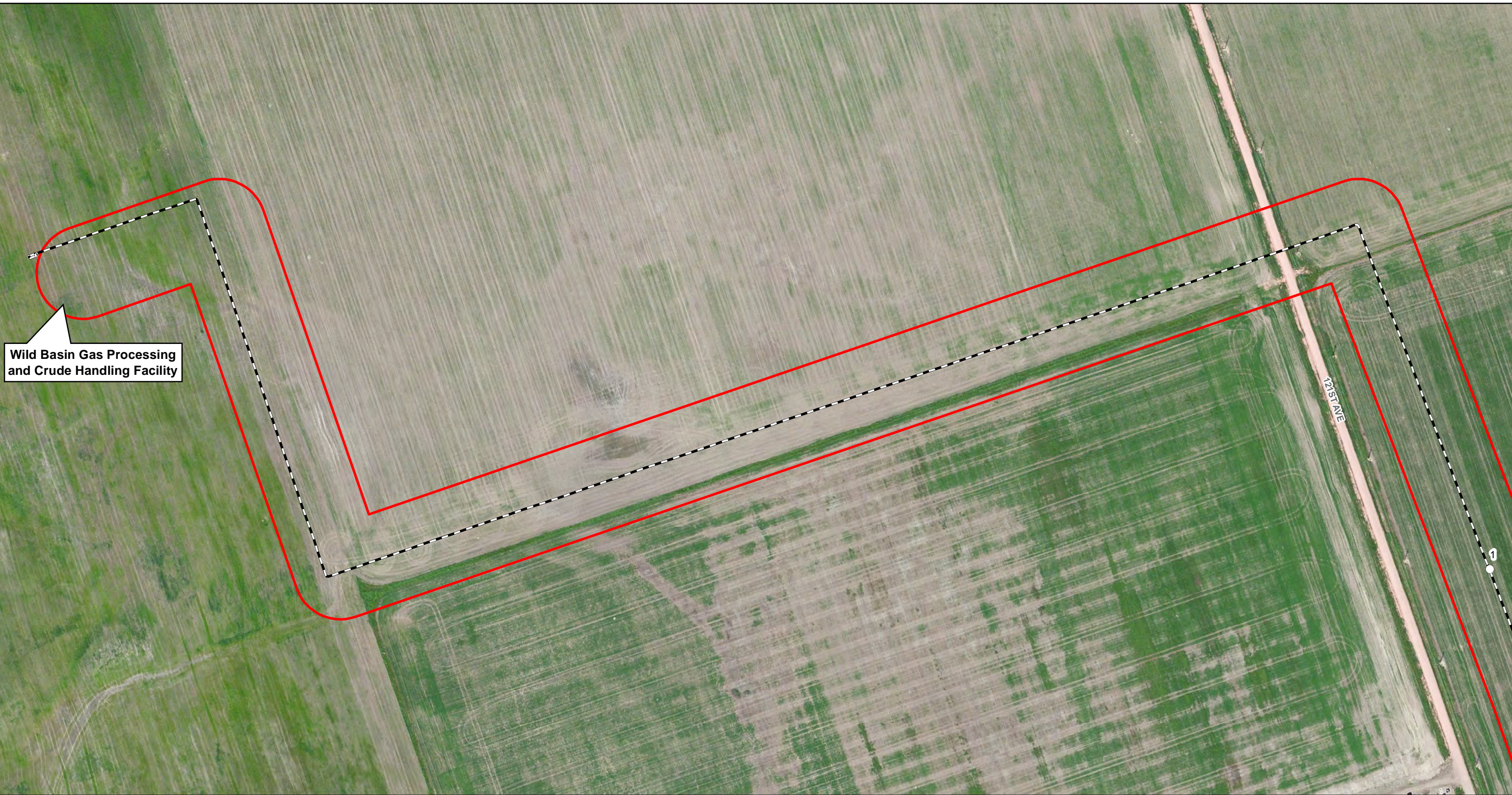
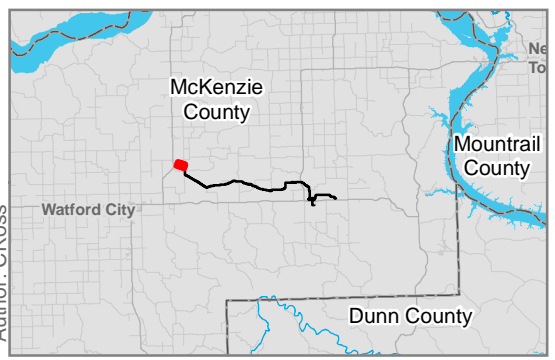


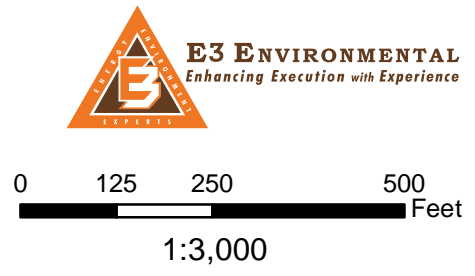
Document Path: P:\Oasis\Johnsons_Corner\WXDs\PSC_Maps\2016\1129_Post Construction Filings\JC_11x17_NaturalResource_aerial_Strip.mxd
Date: 11/29/2016
Author: C.Ross



**Wild Basin Gas Processing
and Crude Handling Facility**



- Milepost
- As-Built Centerline
- Certified Corridor



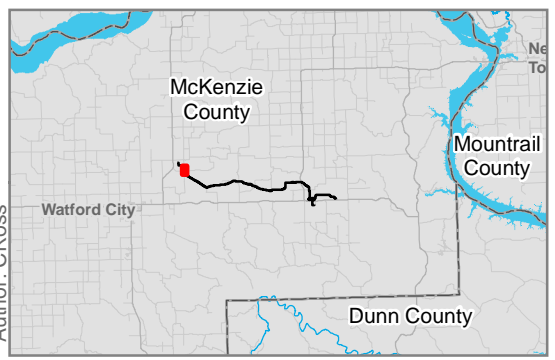
Oasis Midstream Services, LLC
As-Built Alignment and
Certificated Corridor



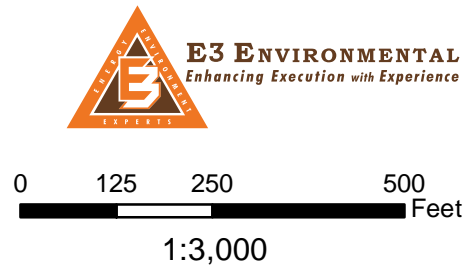
Document Path: P:\Oasis\Johnsons_Corner\MXDs\PSC_Maps\20161129_Post Construction_Filing\JC_11x17_NaturalResource_aerial_Strip.mxd

Date: 11/29/2016

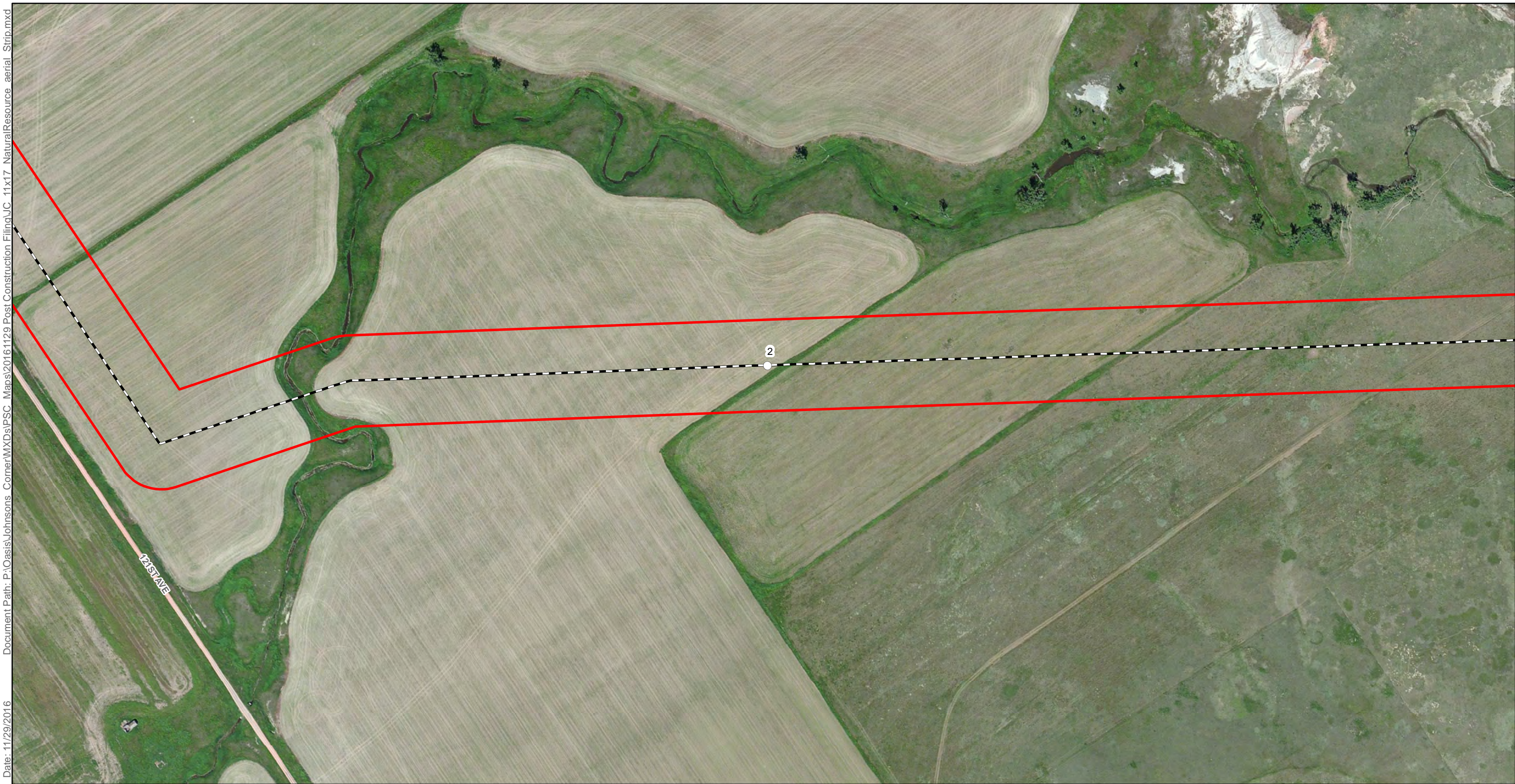
Author: C.Ross



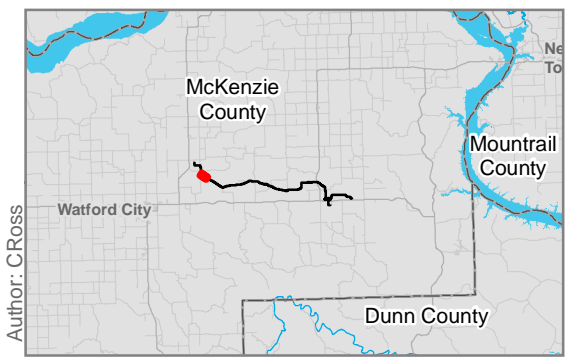
- Milepost
- As-Built Centerline
- Certificated Corridor



Oasis Midstream Services, LLC
 As-Built Alignment and
 Certificated Corridor



Date: 11/29/2016 Document Path: P:\Oasis\Johnsons_Corner\WXDs\PSC_Maps\20161129_Post Construction Filing\VC_11x17_NaturalResource_aerial_Strip.mxd

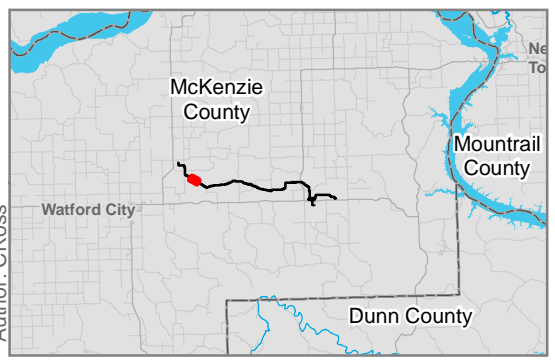


Author: C.Ross

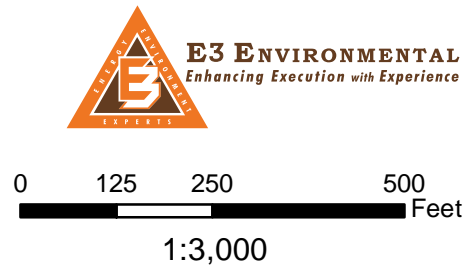
<ul style="list-style-type: none"> ○ Milepost — As-Built Centerline □ Certified Corridor 		
	<p>0 125 250 500 Feet</p> <p>1:3,000</p>	

Oasis Midstream Services, LLC
 As-Built Alignment and
 Certificated Corridor

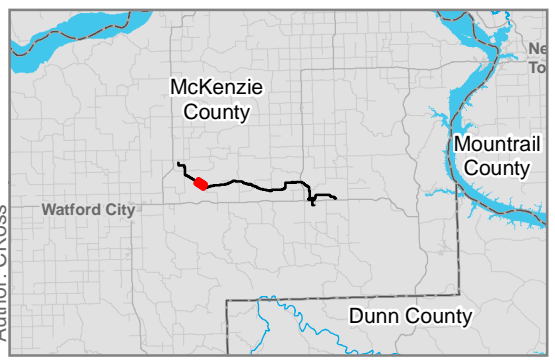
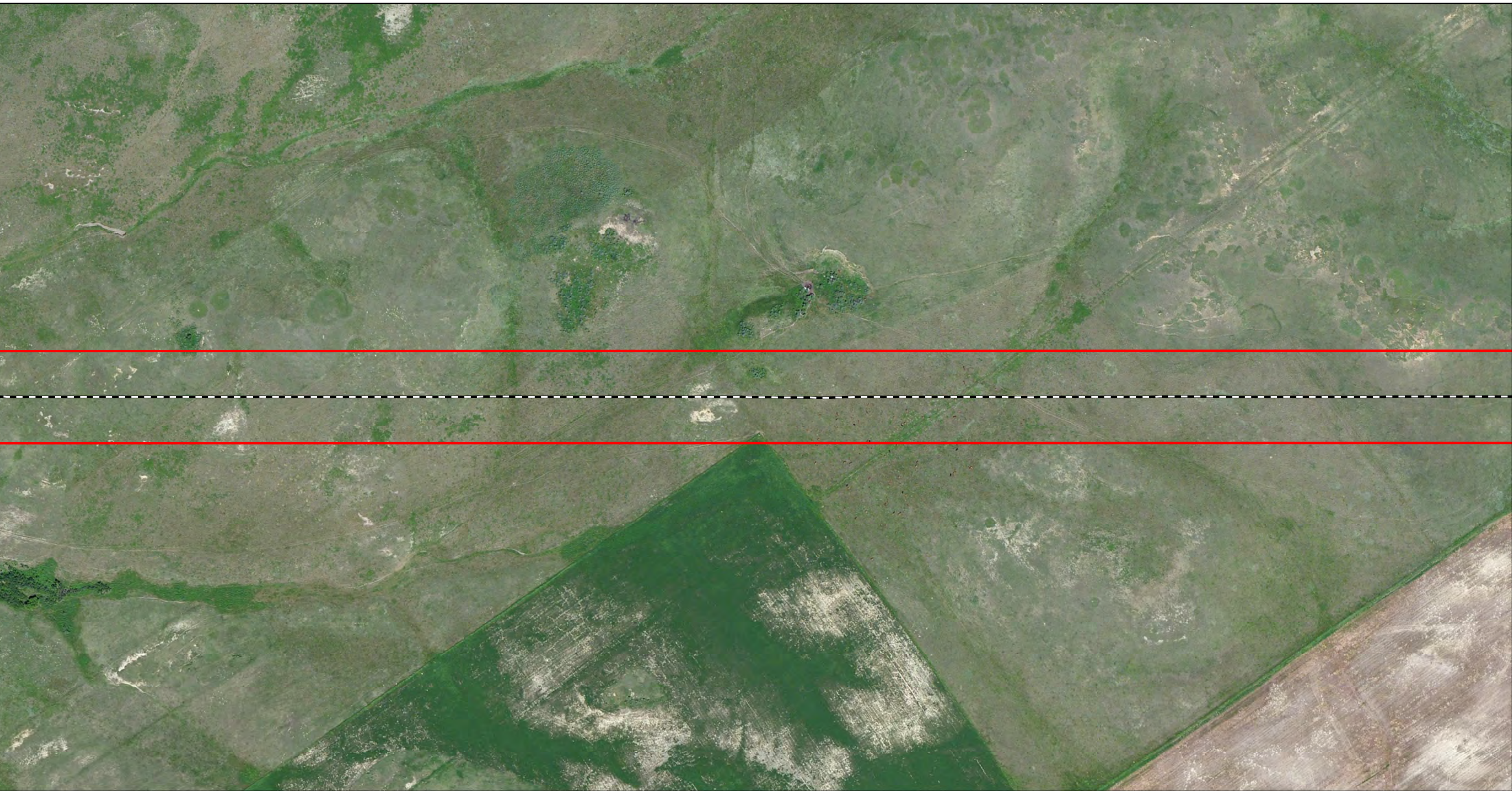
Page 3 of 26
 McKenzie County, North Dakota



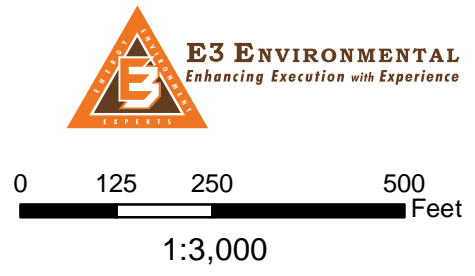
- Milepost
- As-Built Centerline
- Certificated Corridor



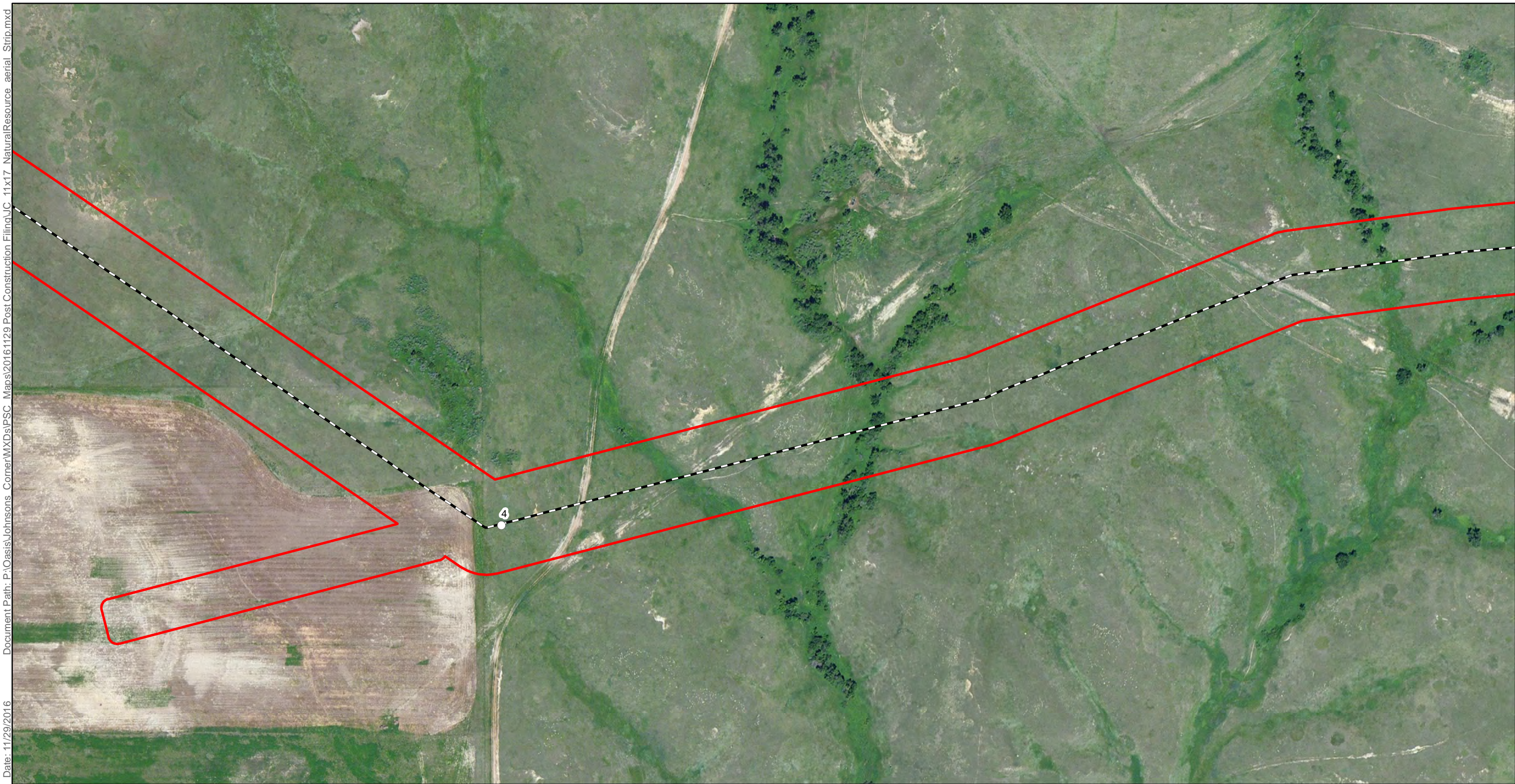
Oasis Midstream Services, LLC
As-Built Alignment and
Certificated Corridor



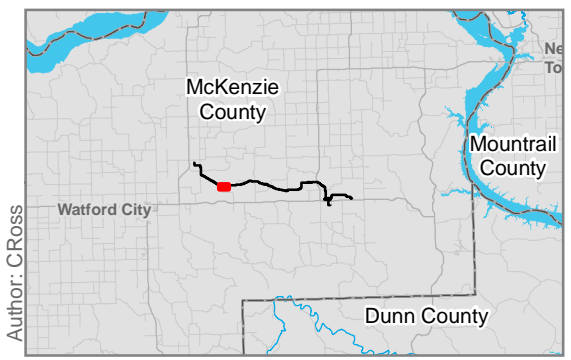
- Milepost
- As-Built Centerline
- Certificated Corridor



Oasis Midstream Services, LLC
 As-Built Alignment and
 Certificated Corridor



Date: 11/29/2016 Document Path: P:\Oasis\Johnsons_Corner\WXDs\PSC_Maps\20161129_Post Construction Filings\JC_11x17_NaturalResource_aerial_Strip.mxd

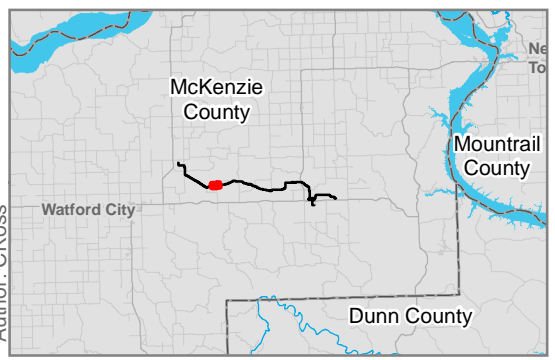
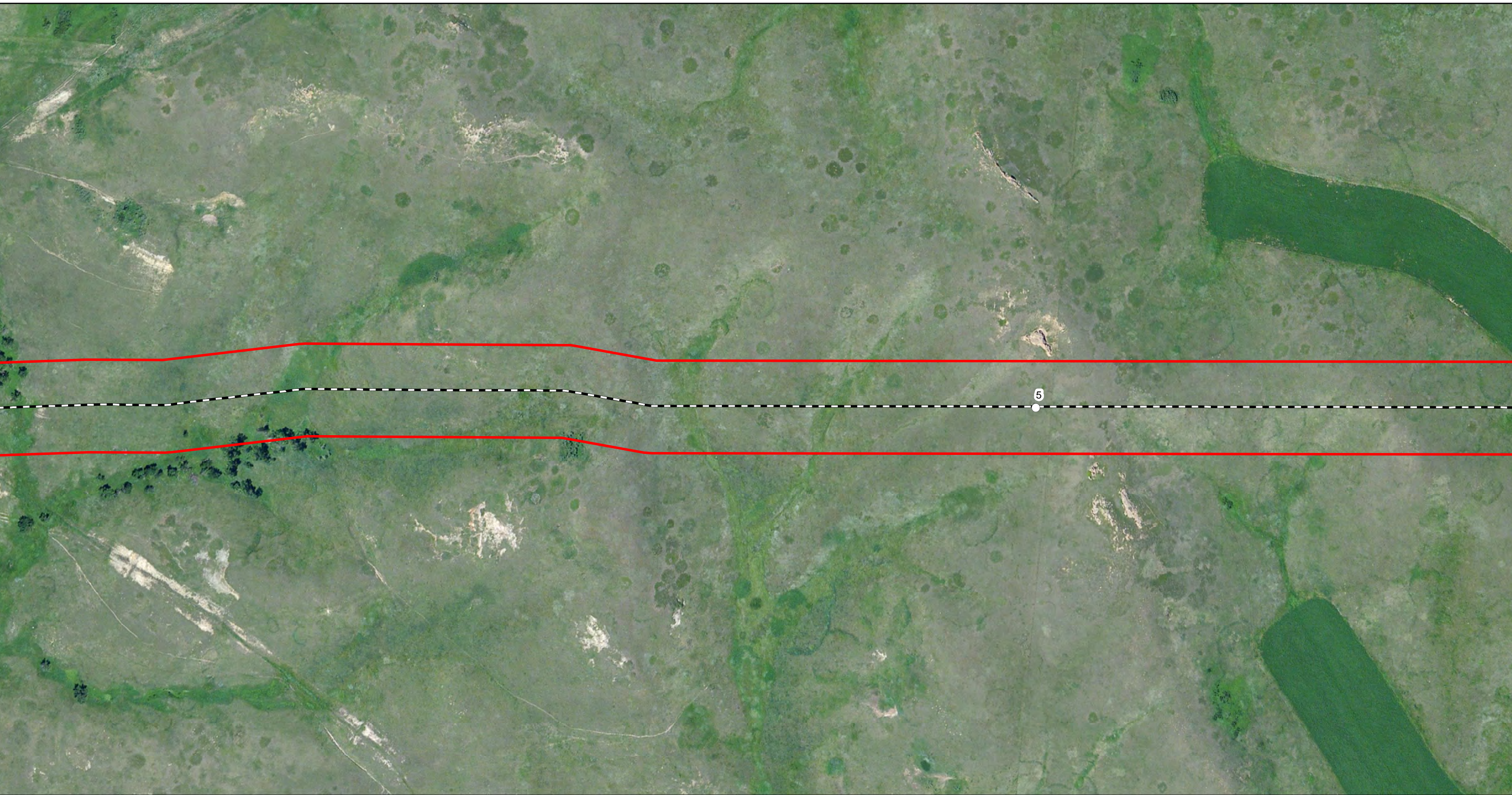


Author: C.Ross

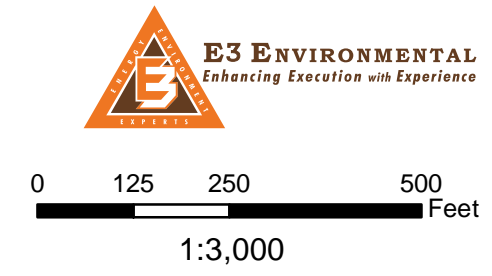
<ul style="list-style-type: none"> ○ Milepost — As-Built Centerline □ Certificated Corridor 		<p>E3 ENVIRONMENTAL <i>Enhancing Execution with Experience</i></p>
<p>0 125 250 500 Feet</p> <p>1:3,000</p>		

Oasis Midstream Services, LLC
As-Built Alignment and
Certificated Corridor

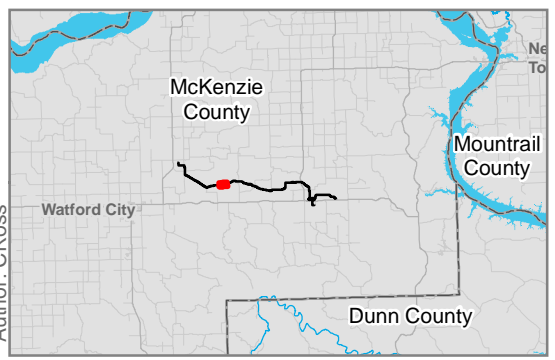
Page 6 of 26
McKenzie County, North Dakota



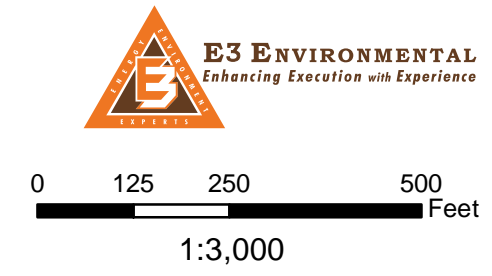
- Milepost
- As-Built Centerline
- Certificated Corridor



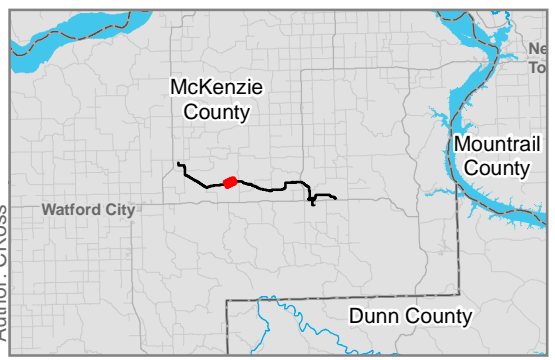
Oasis Midstream Services, LLC
 As-Built Alignment and
 Certificated Corridor



- Milepost
- As-Built Centerline
- Certificated Corridor



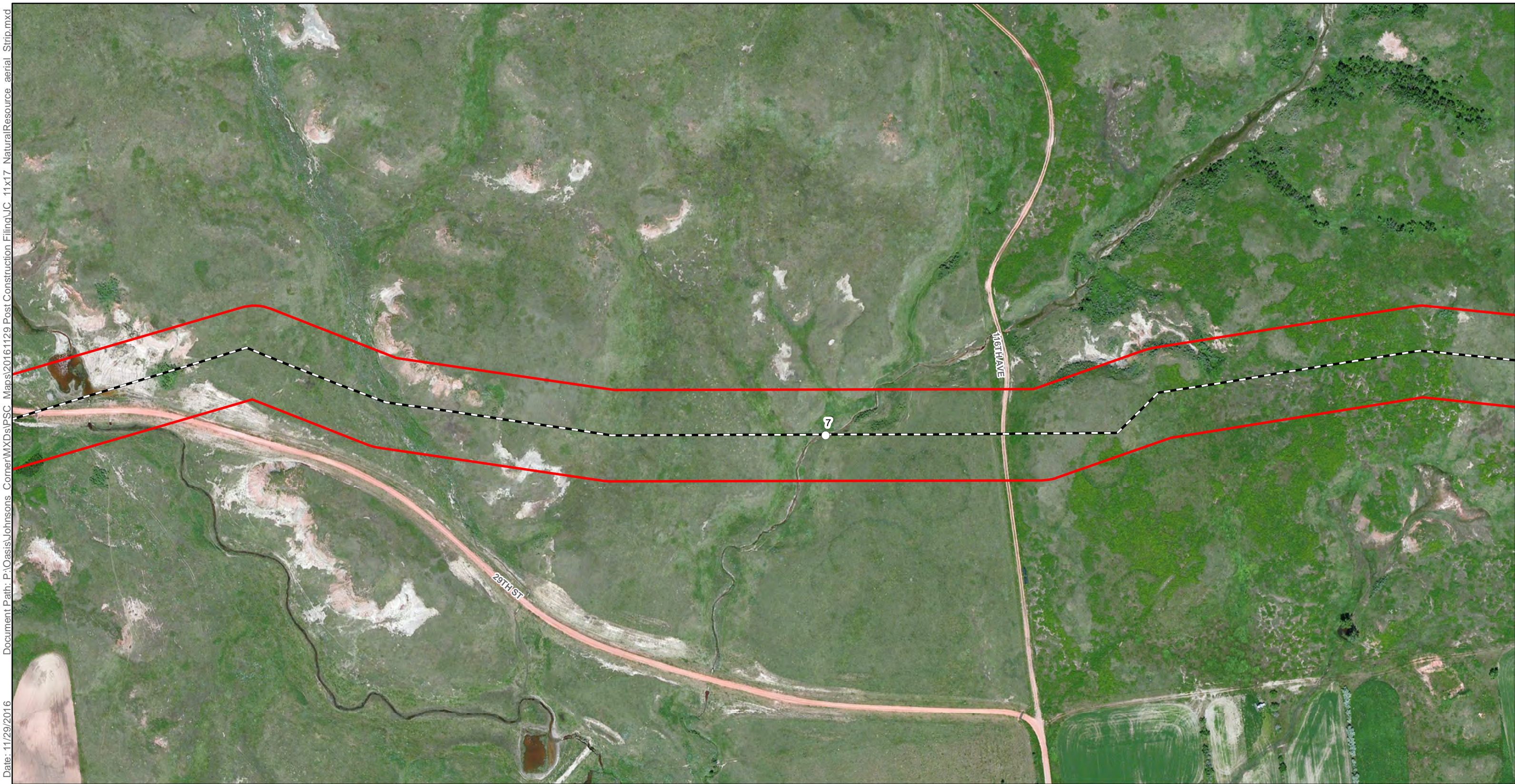
Oasis Midstream Services, LLC
 As-Built Alignment and
 Certificated Corridor



○ Milepost
--- As-Built Centerline
□ Certificated Corridor

Oasis Midstream Services, LLC
As-Built Alignment and
Certificated Corridor

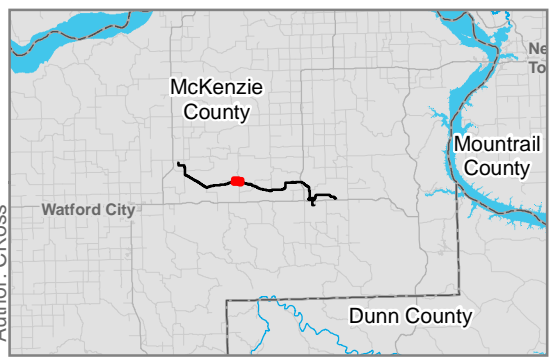
Page 9 of 26
McKenzie County, North Dakota



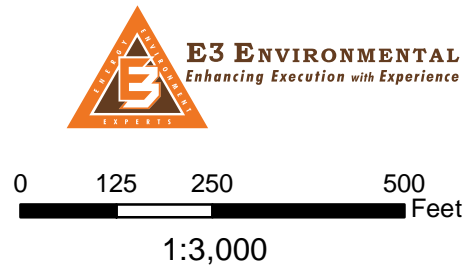
Document Path: P:\Oasis\Johnsons_Corner\WXDs\PSC_Maps\20161129_Post Construction_Filing\JC_11x17_NaturalResource_aerial_Strip.mxd

Date: 11/29/2016

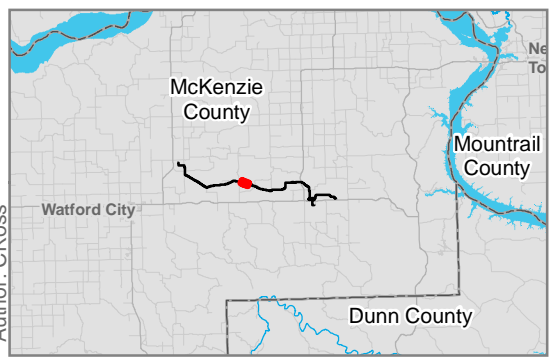
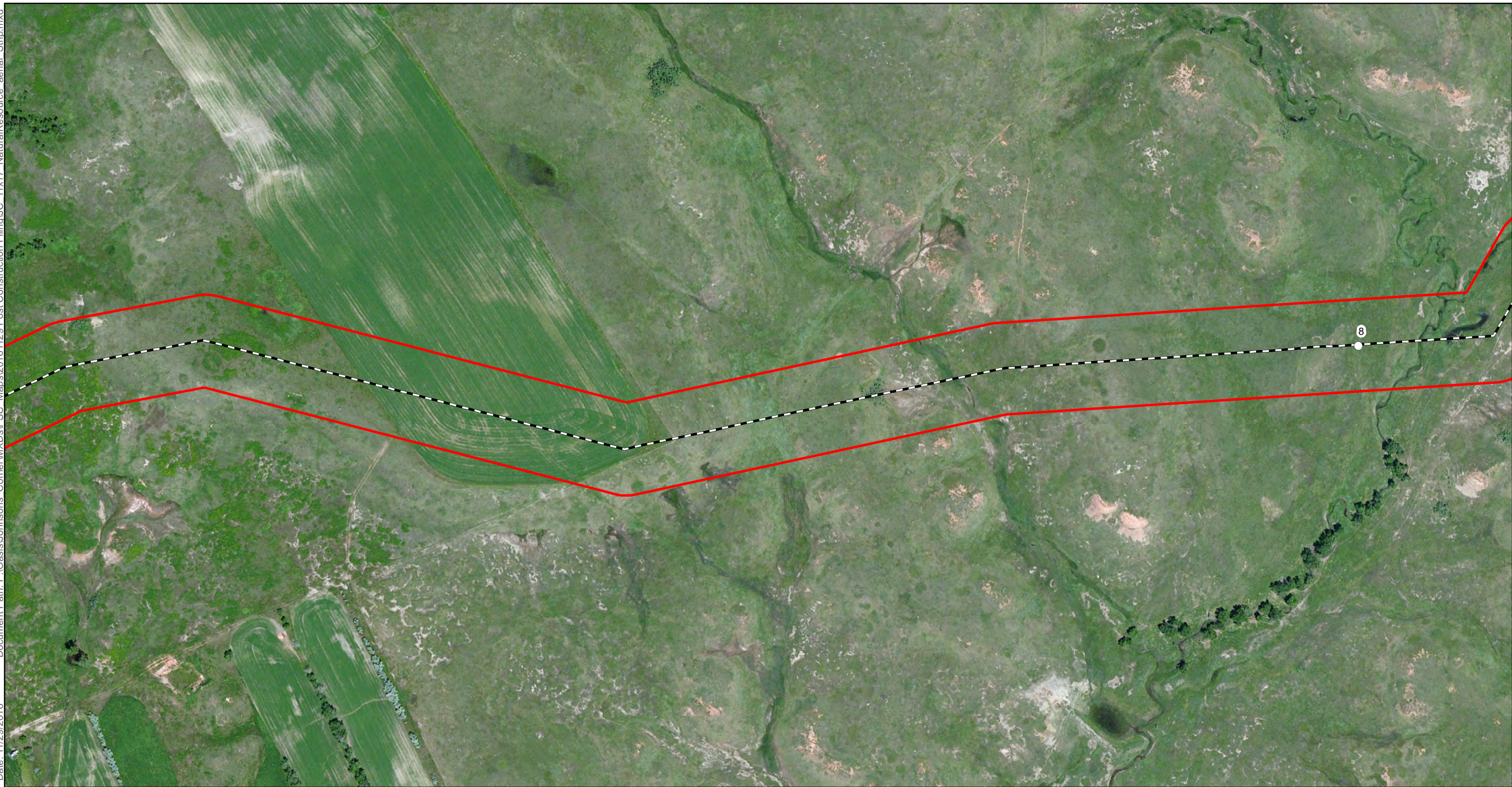
Author: C.Ross



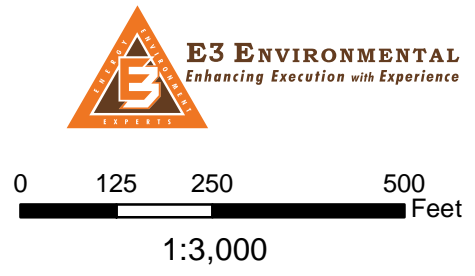
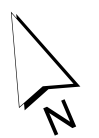
- Milepost
- As-Built Centerline
- Certificated Corridor



Oasis Midstream Services, LLC
 As-Built Alignment and
 Certificated Corridor

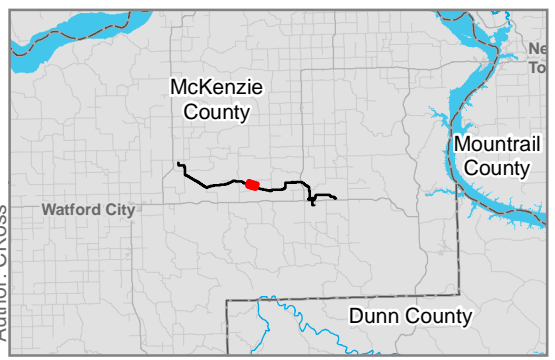
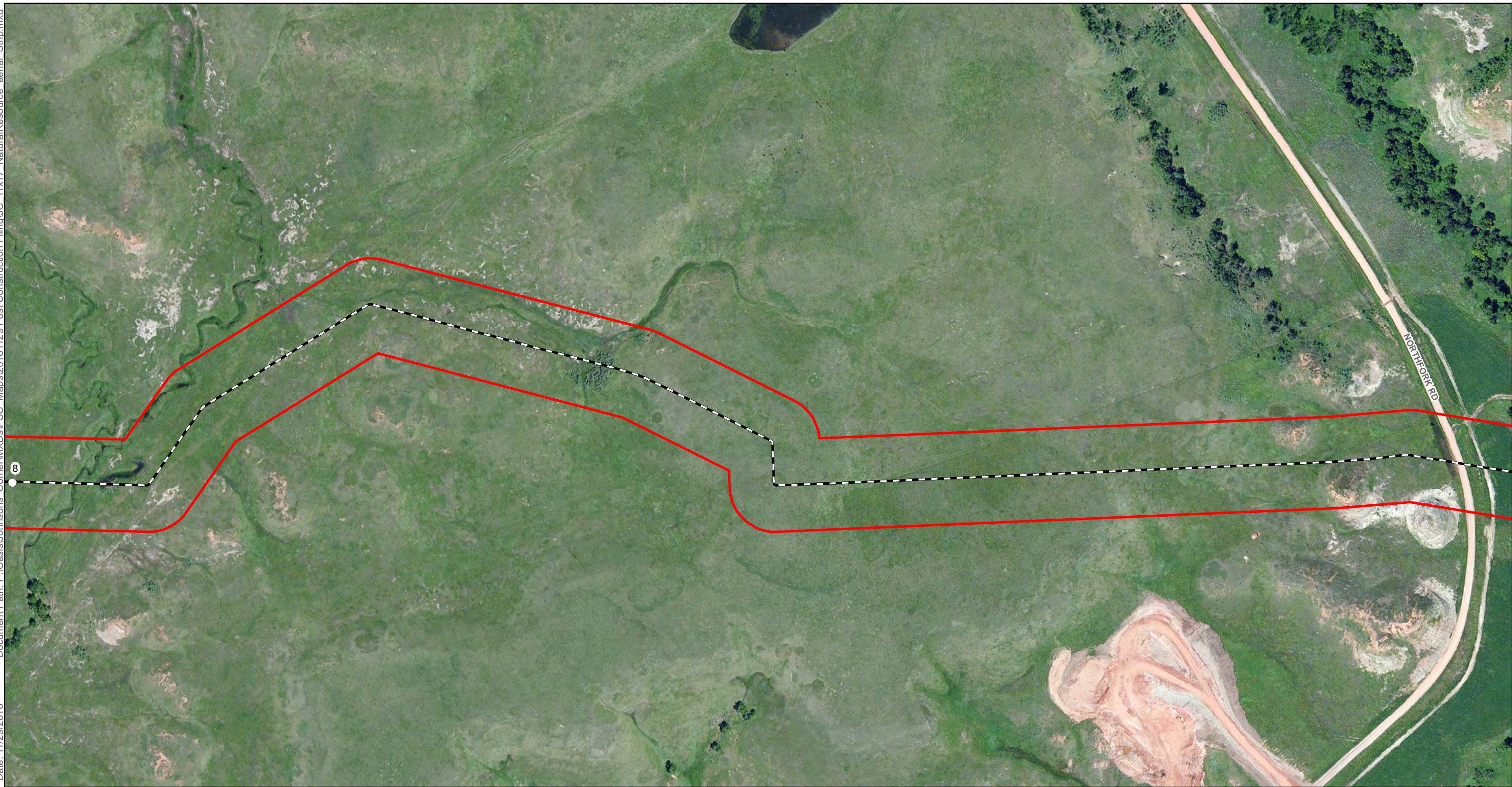


- Milepost
- As-Built Centerline
- Certificated Corridor

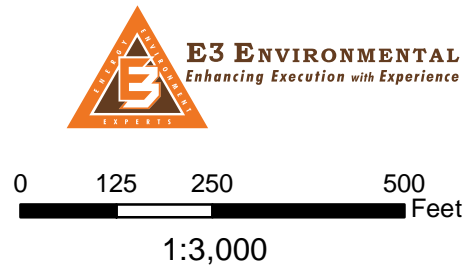


Oasis Midstream Services, LLC
 As-Built Alignment and
 Certificated Corridor

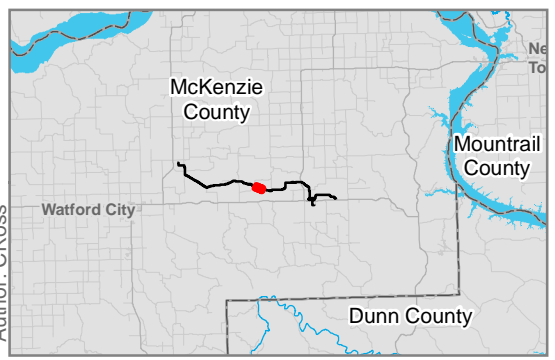
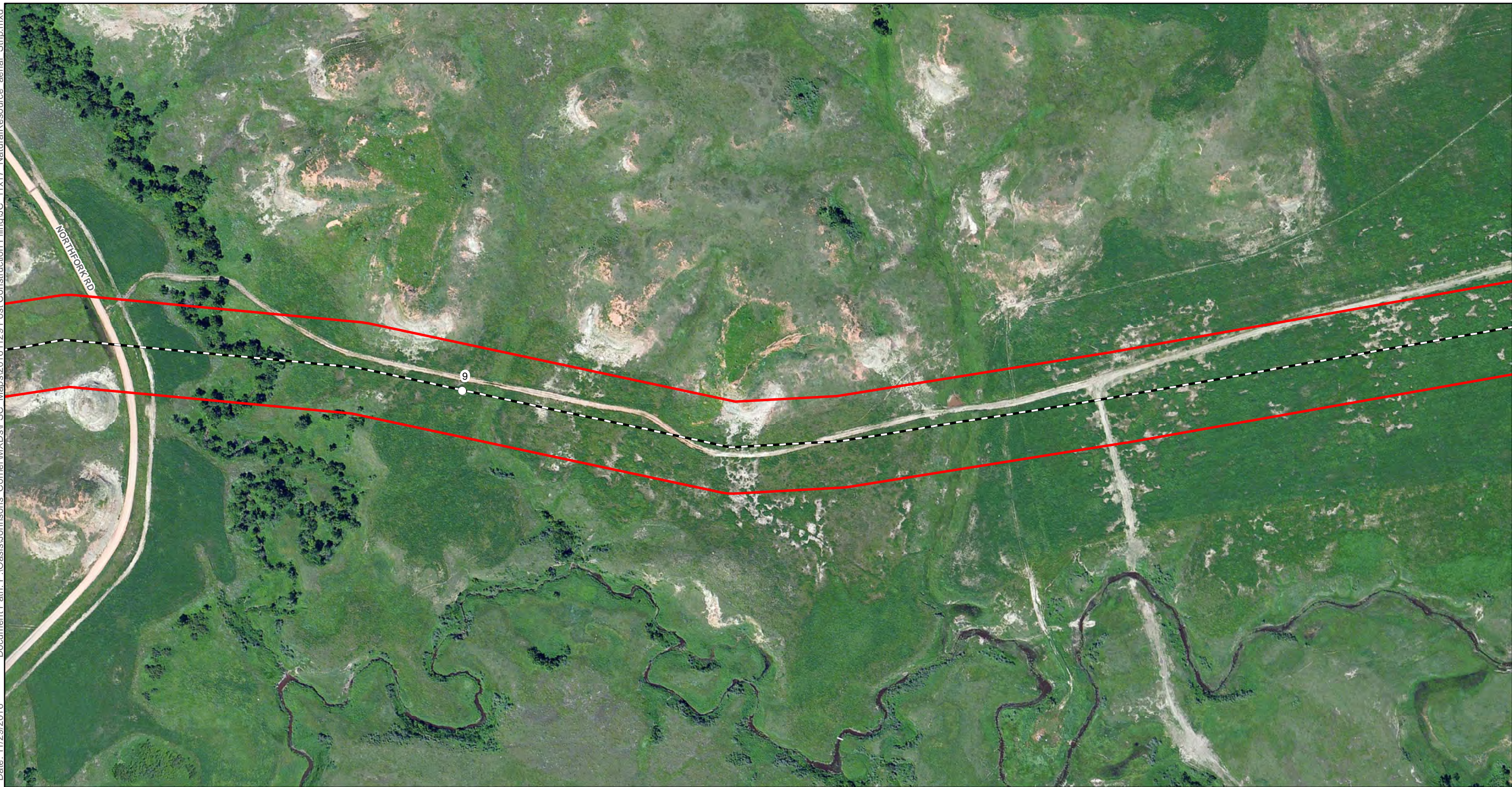
Date: 11/29/2016
Author: C.Ross
Document Path: P:\Oasis\Johnsons_Corner\WXDs\PSC_Maps\20161129_Post Construction Filing\JC_11x17_NaturalResource_aerial_Strip.mxd



- Milepost
- As-Built Centerline
- Certified Corridor



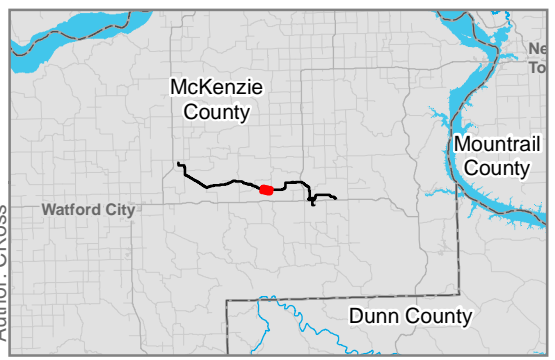
Oasis Midstream Services, LLC
As-Built Alignment and
Certificated Corridor



○ Milepost		
--- As-Built Centerline		
□ Certificated Corridor		
		<p>0 125 250 500 Feet</p> <p>1:3,000</p>

Oasis Midstream Services, LLC
 As-Built Alignment and
 Certificated Corridor

Page 13 of 26
 McKenzie County, North Dakota

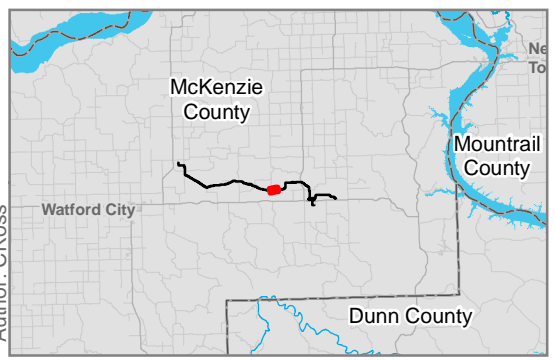
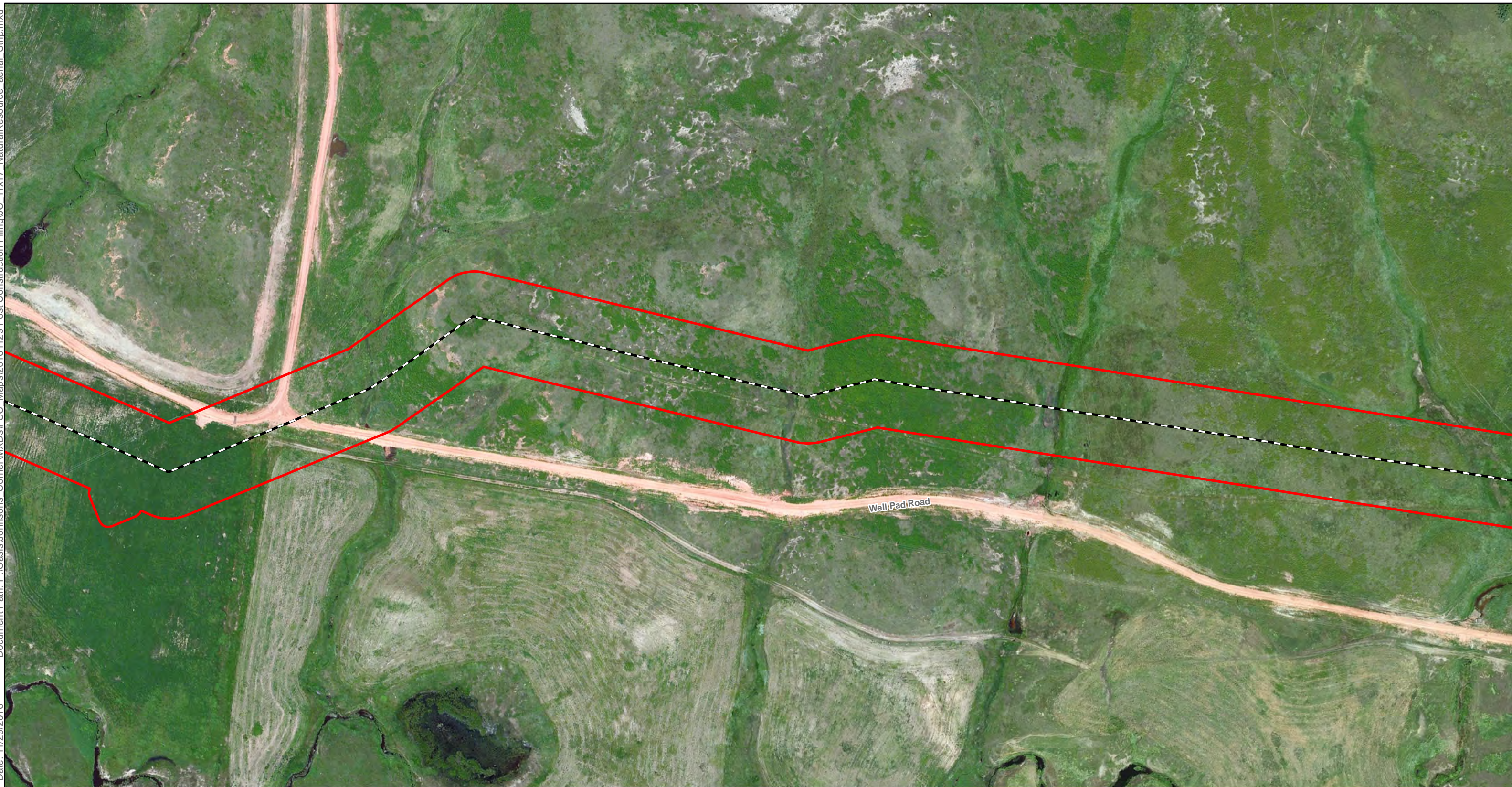


- Milepost
- As-Built Centerline
- Certificated Corridor

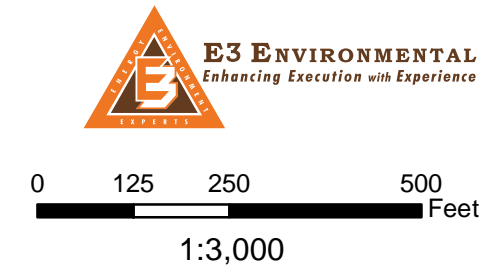
1:3,000

Oasis Midstream Services, LLC
 As-Built Alignment and
 Certificated Corridor

Page 14 of 26
 McKenzie County, North Dakota

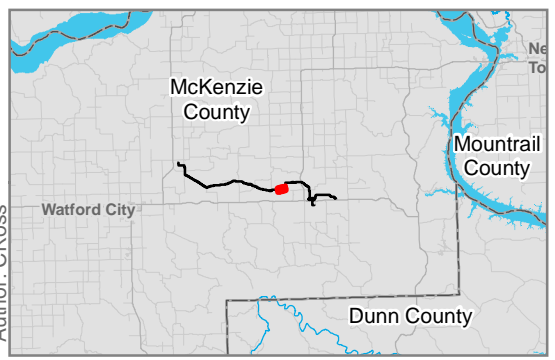
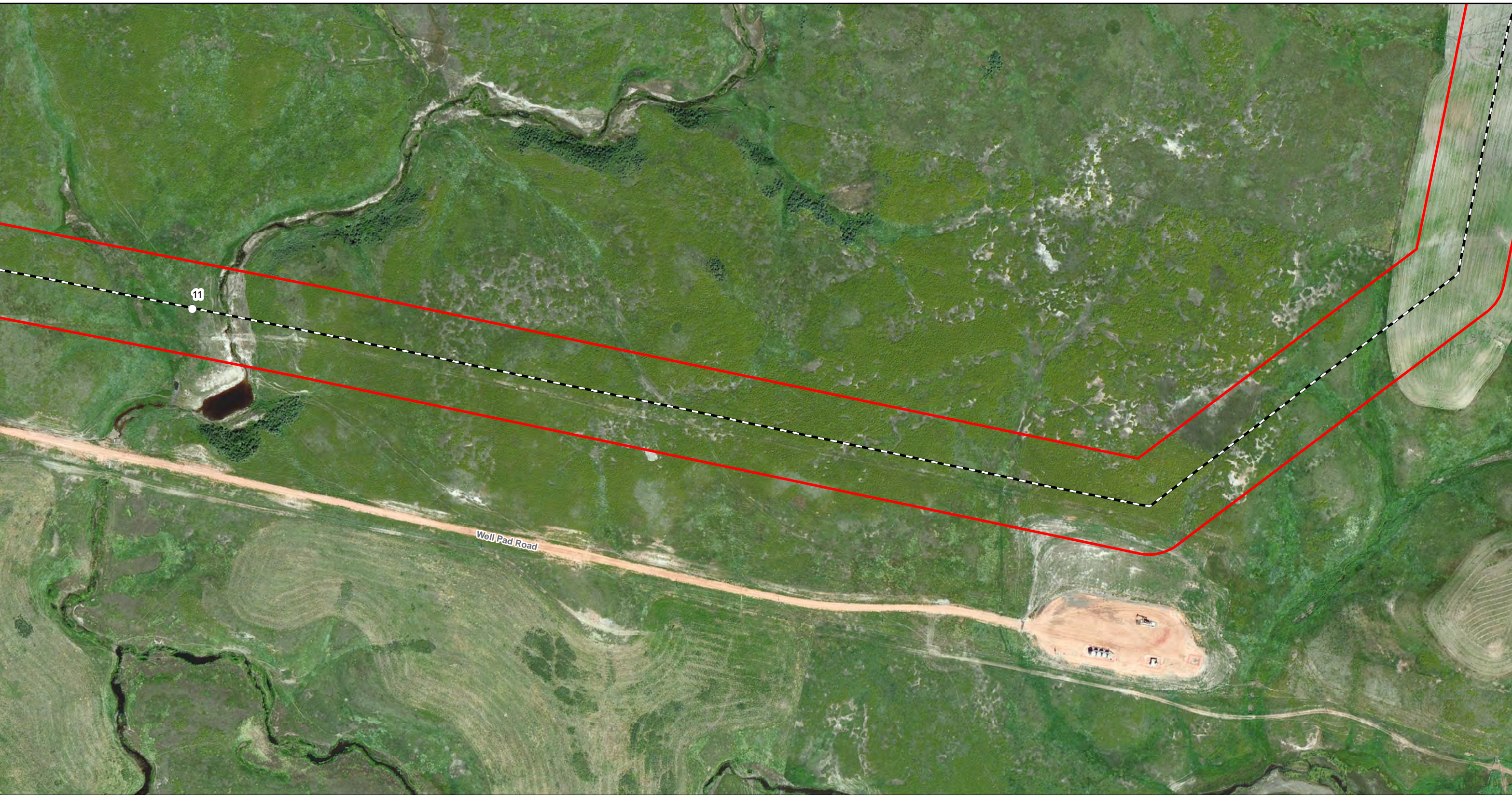


- Milepost
- As-Built Centerline
- Certificated Corridor

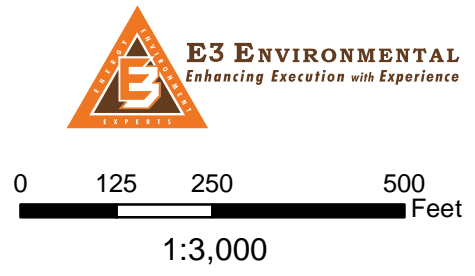


Oasis Midstream Services, LLC
 As-Built Alignment and
 Certificated Corridor

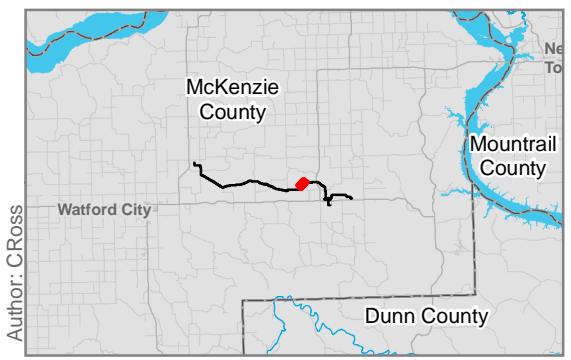
Document Path: P:\Oasis\Johnsons_Corner\WXDs\PSC_Maps\20161129_Post Construction Filing\JC_11x17_NaturalResource_aerial_Strip.mxd
Date: 11/29/2016
Author: C.Ross



- Milepost
- As-Built Centerline
- Certificated Corridor



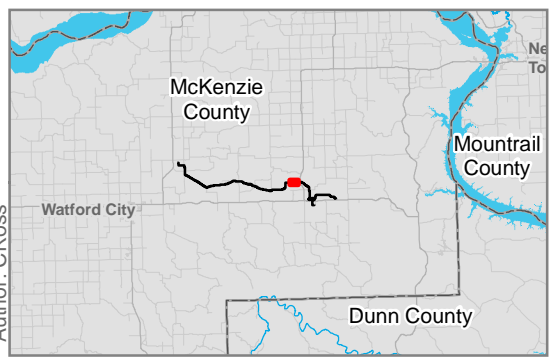
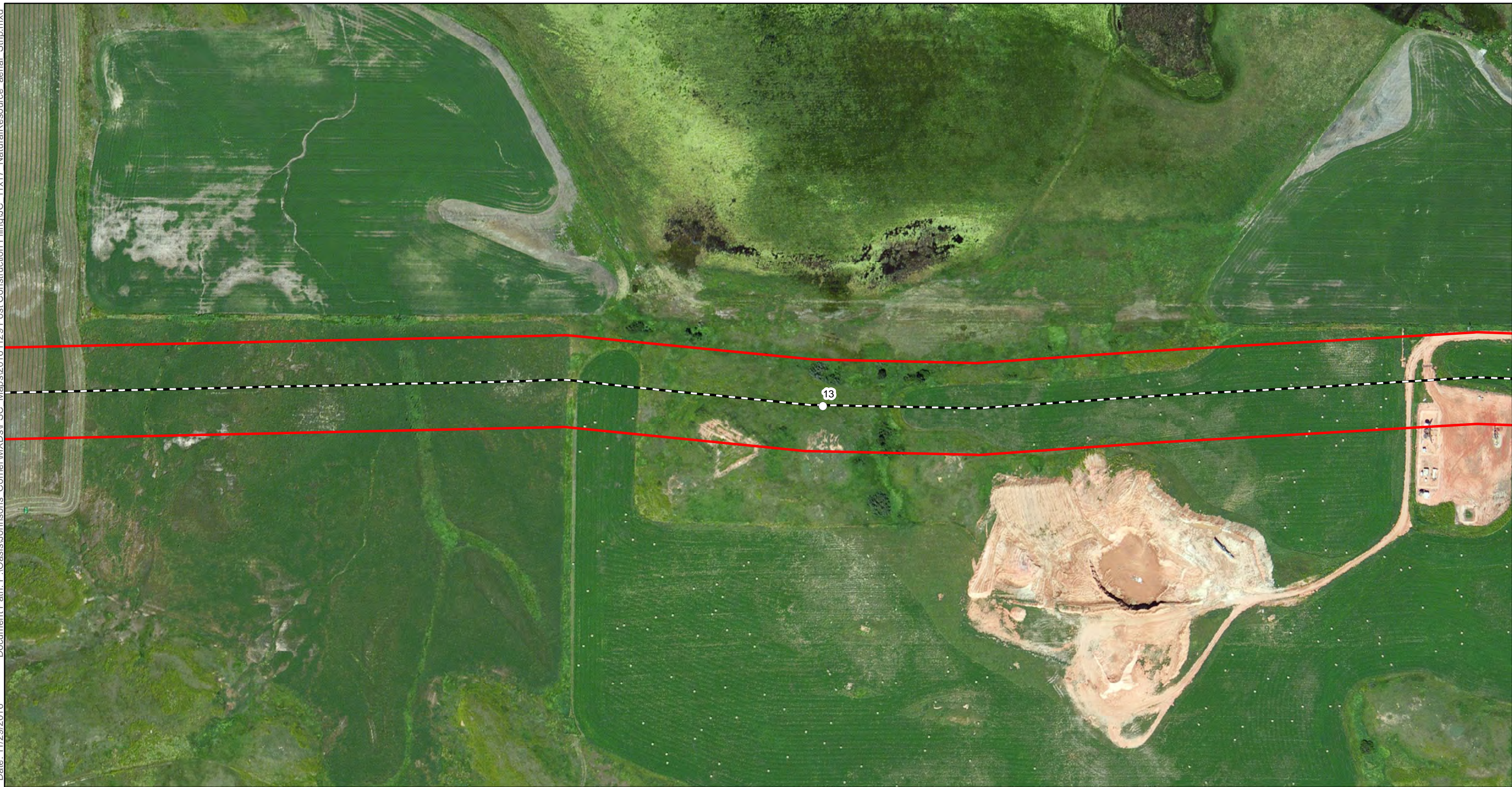
Oasis Midstream Services, LLC
As-Built Alignment and
Certificated Corridor



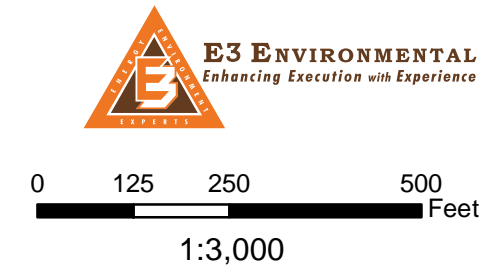
- Milepost
- As-Built Centerline
- Certificated Corridor

Oasis Midstream Services, LLC
 As-Built Alignment and
 Certificated Corridor

Page 17 of 26
 McKenzie County, North Dakota



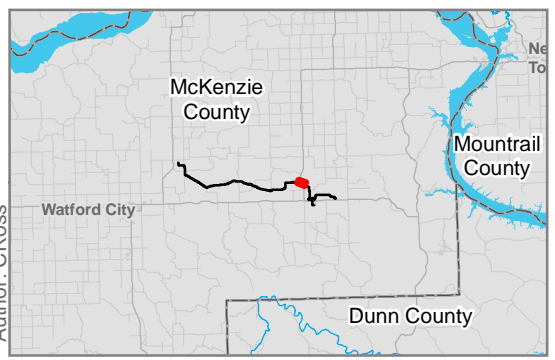
- Milepost
- As-Built Centerline
- Certificated Corridor



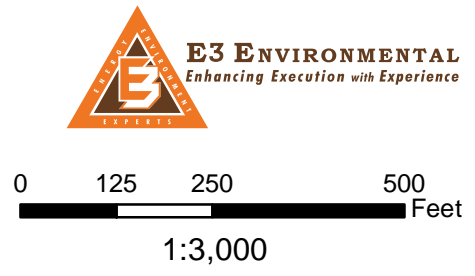
Oasis Midstream Services, LLC
As-Built Alignment and
Certificated Corridor

Document Path: P:\Oasis\Johnsons_Corner\WXDs\PSC_Maps\20161129_Post Construction Filings\JC_11x17_NaturalResource_aerial_Strip.mxd

Date: 11/29/2016
Author: C.Ross



- Milepost
- As-Built Centerline
- Certificated Corridor

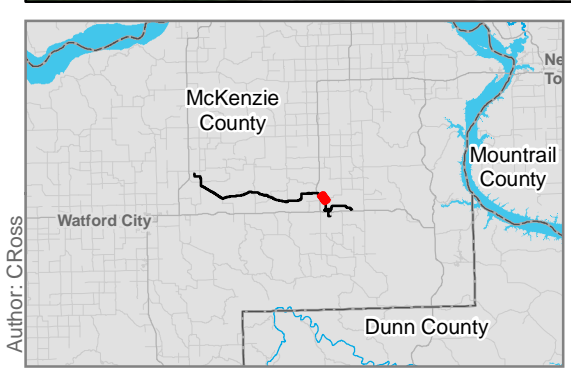


Oasis Midstream Services, LLC
As-Built Alignment and
Certificated Corridor



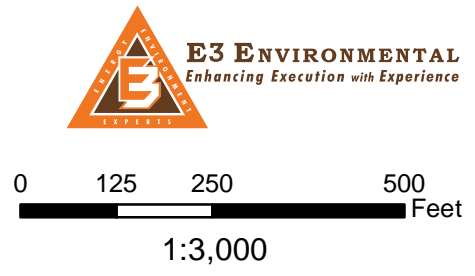
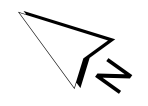
Document Path: P:\Oasis\Johnsons_Corner\WXDs\PSC_Maps\20161129_Post Construction Filing\JC_11x17_NaturalResource_aerial_Strip.mxd

Date: 11/29/2016



Author: C.Ross

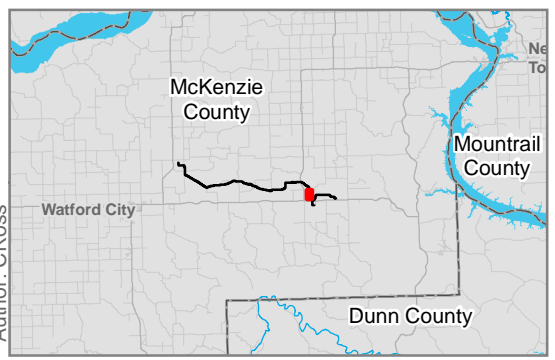
- Milepost
- As-Built Centerline
- Certificated Corridor



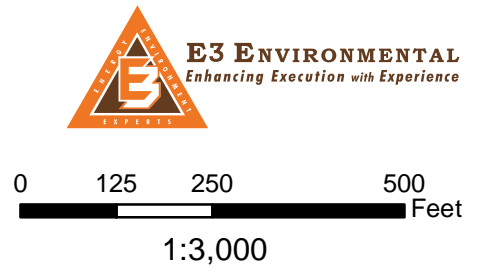
Oasis Midstream Services, LLC
 As-Built Alignment and
 Certificated Corridor



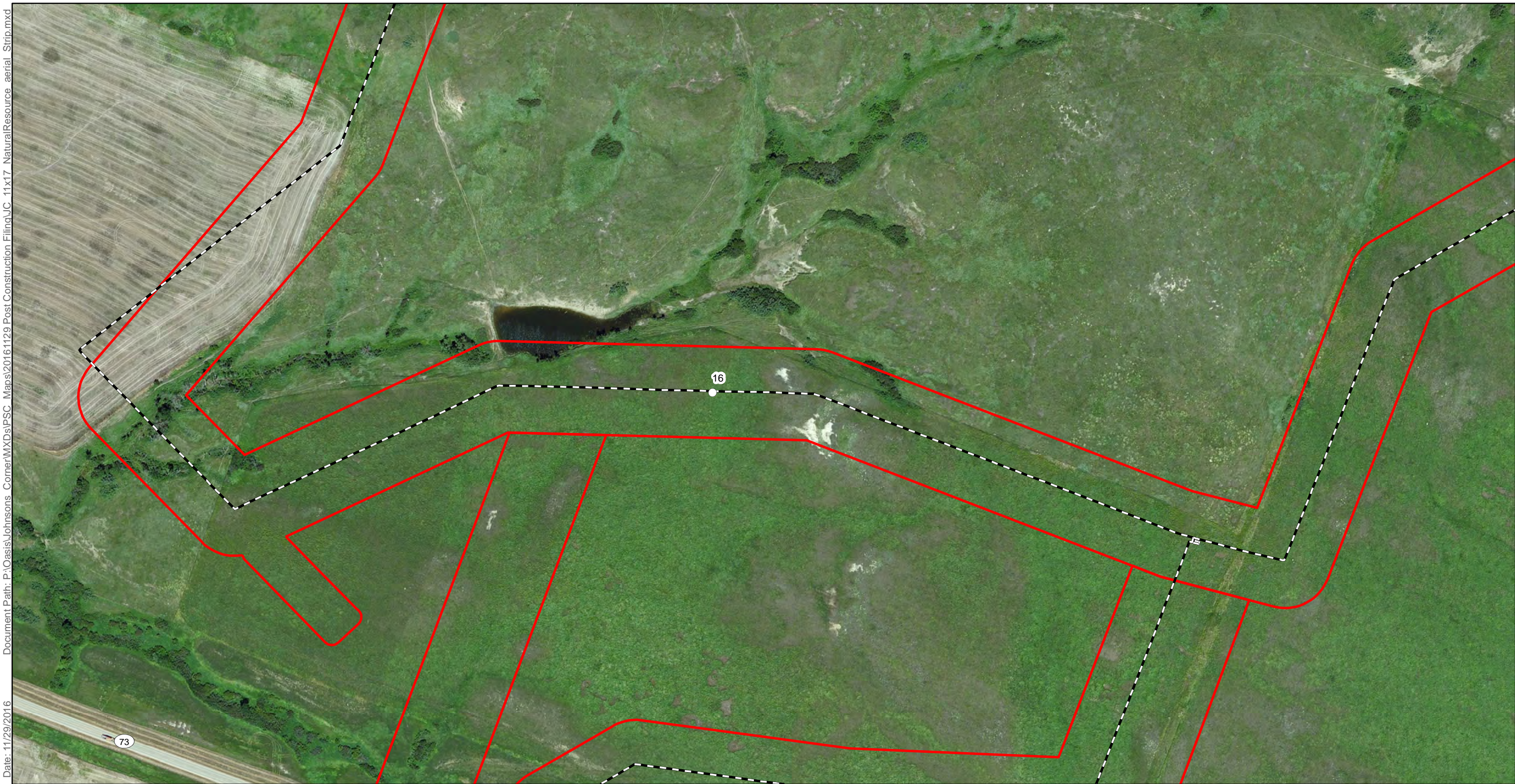
Date: 11/29/2016
 Author: C.Ross
 Document Path: P:\Oasis\Johnsons_Corner\MXDs\PSC_Maps\20161129_Post Construction Filing\JC_11x17_NaturalResource_aerial_Strip.mxd



- Milepost
- As-Built Centerline
- Certificated Corridor



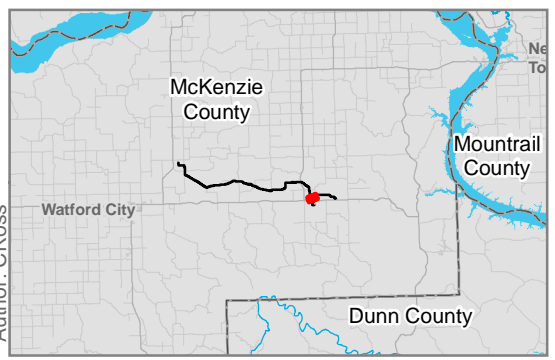
Oasis Midstream Services, LLC
 As-Built Alignment and
 Certificated Corridor



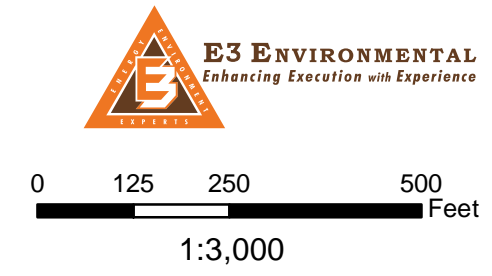
Document Path: P:\Oasis\Johnsons_Corner\WXDs\PSC_Maps\20161129_Post Construction Filing\JC_11x17_NaturalResource_aerial_Strip.mxd

Date: 11/29/2016

Author: C.Ross



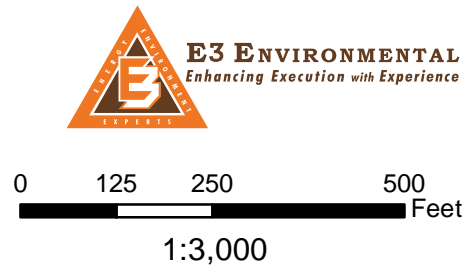
- Milepost
- As-Built Centerline
- Certified Corridor



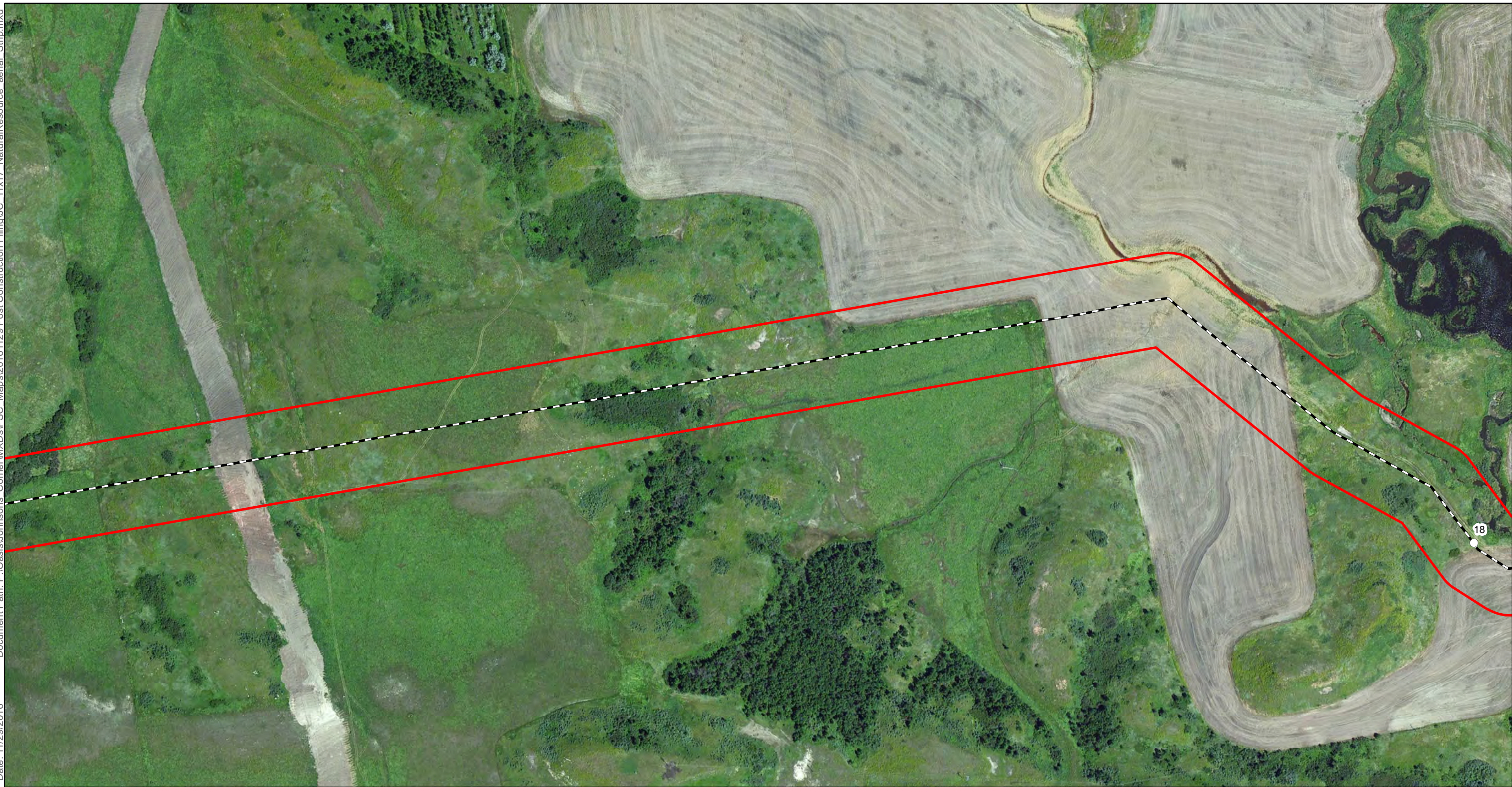
Oasis Midstream Services, LLC
 As-Built Alignment and
 Certificated Corridor



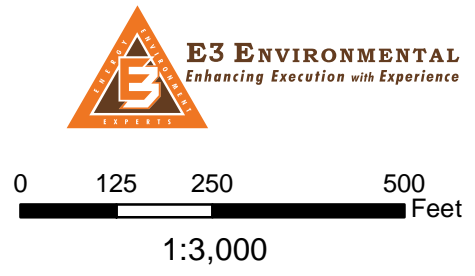
- Milepost
- As-Built Centerline
- Certificated Corridor



Oasis Midstream Services, LLC
 As-Built Alignment and
 Certificated Corridor



- Milepost
- As-Built Centerline
- Certified Corridor



Oasis Midstream Services, LLC
 As-Built Alignment and
 Certificated Corridor



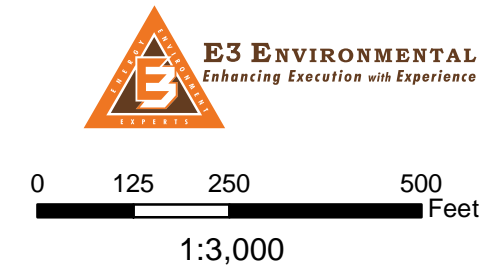
Document Path: P:\Oasis\Johnsons Corner\WXDs\PSC_Maps\20161129_Post Construction Filings\JC_11x17_NaturalResource_aerial_Strip.mxd

Date: 11/29/2016

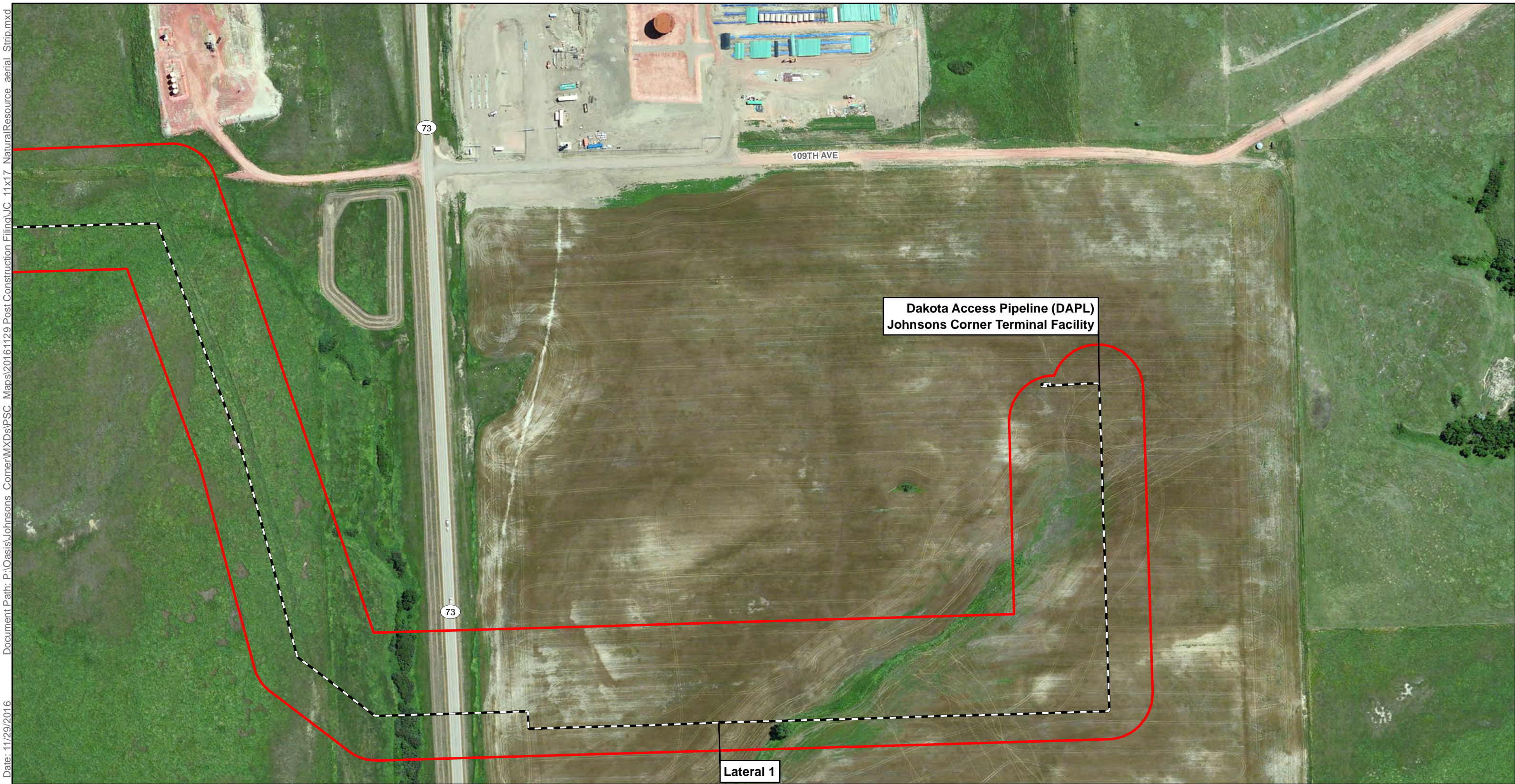
Author: C.Ross



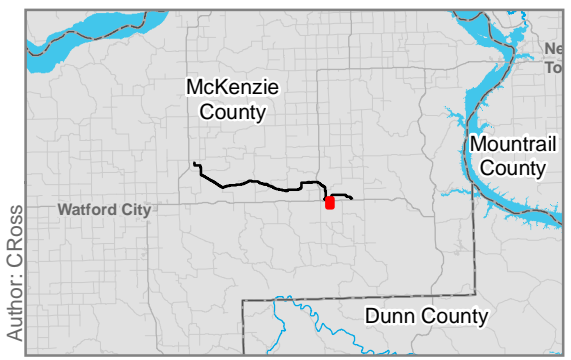
- Milepost
- As-Built Centerline
- Certified Corridor



Oasis Midstream Services, LLC
 As-Built Alignment and
 Certificated Corridor

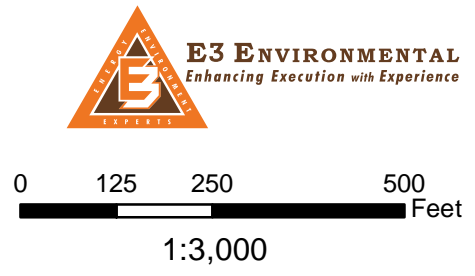


Date: 11/29/2016 Document Path: P:\Oasis\Johnsons Corner\WXDs\PSC_Maps\20161129_Post Construction Filing\JC_11x17_NaturalResource_aerial_Strip.mxd



Author: C.Ross

- Milepost
- As-Built Centerline
- Certificated Corridor



**Dakota Access Pipeline (DAPL)
Johnsons Corner Terminal Facility**

Lateral 1

Oasis Midstream Services, LLC
As-Built Alignment and
Certificated Corridor