

Bauske, Shelly A.

From: Haugen, Mark <Mark.Haugen@magellanlp.com>
Sent: Monday, February 02, 2015 2:56 PM
To: Bauske, Shelly A.
Subject: RE: ND Public Service Commission Request
Attachments: Magellan Fargo Prover 1.jpg; Magellan Fargo Prover 2.jpg; Magellan Fargo Prover 3.jpg; Magellan Grand Forks Prover 1.jpg; Magellan Grand Forks Prover 2.jpg; Magellan Grand Forks Prover 3.jpg

Shelly, see attached photos.

Mark Haugen
Magellan Midstream Partners, L.P.
709 3rd Ave West
Alexandria, MN 56308
Ph: 320-762-1193 Ext. 21
Cl: 320-808-6352
mark.haugen@magellanlp.com

From: Bauske, Shelly A. [<mailto:sbauske@nd.gov>]
Sent: Friday, January 30, 2015 4:38 PM
To: Haugen, Mark
Subject: ND Public Service Commission Request

Good Afternoon Mark

Per our conversation, please email me pictures of your provers and the set up you have at both the West Fargo and Grand Forks locations.

If you have any questions, please let me know.

Thank you.

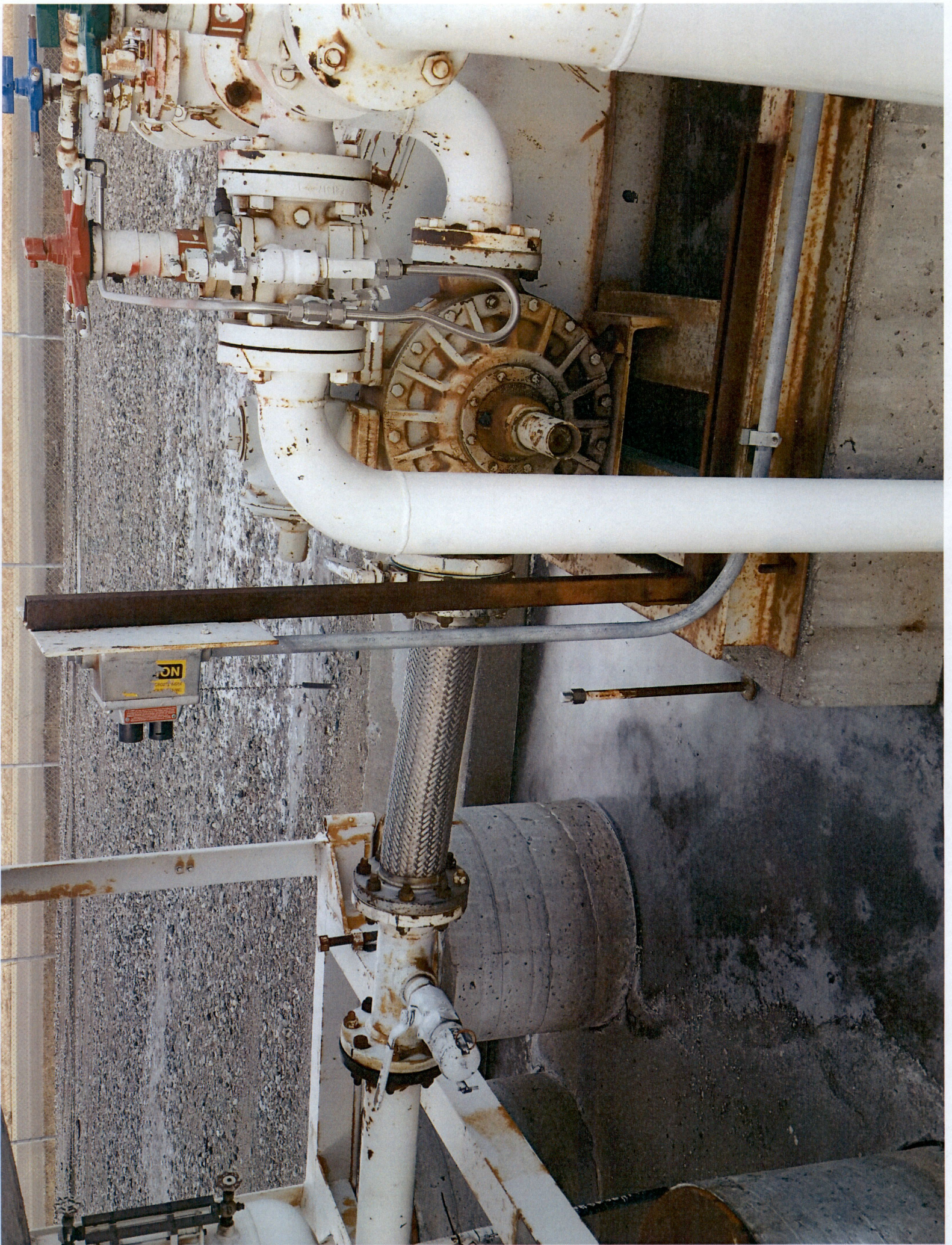
Shelly Bauske
Public Service Commission
600 E Boulevard Ave Dept 408
Bismarck ND 58505-0480
701-328-4070
701-328-2410 (fax)
sbauske@nd.gov

3 WM-15-782 Filed: 2/2/2015 Pages: 7
Prover pictures

Magellan Midstream Partners, L.P.









DRIVERS NOTICE
TURN OFF ENGINE, LIGHTS, HEATER,
RADIOS, CELLULAR PHONES,
DO NOT OPEN HOODS, CLEAN OR
WORK ON TRANSPORT UNIT.
REMAIN WITH YOUR UNIT.
NO SMOKING

X
F
D
Y

ENGINE HOOD
EMERGENCY ONLY



