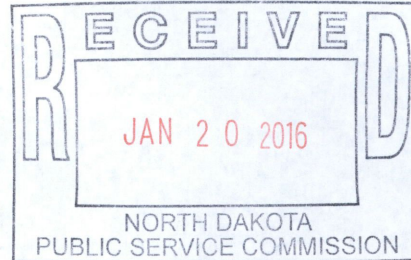




**DAKOTA
GASIFICATION
COMPANY**
A BASIN ELECTRIC POWER
COOPERATIVE SUBSIDIARY

January 19, 2016

North Dakota Public Service Commission
State Capitol Building
Department 408
600 East Boulevard Avenue
Bismarck, ND 58505-0480



Re: Case No. 10,268

Dear Ladies & Gentlemen:

As previously communicated to the North Dakota Public Service Commission (the **Commission**), Dakota Gasification Company (**DGC**) wishes to replace an approximately 1.1-mile length of its synthetic natural gas pipeline located in the SW1/4 of Section 30, Township 145 North, Range 87 West and the N1/2 and SE1/4 of Section 25, Township 145 North, Range 88 West in Mercer County, North Dakota.

Enclosed please find the Affidavit required by NDCC Section 49-22-03.

Very truly yours,

Mark D. Foss
Sr. Vice President & General Counsel

mdf/mw

Attachments: Exhibit 1, Map of Replacement Line
Exhibit 2, DGC Reroute: A Class III Cultural
Resource Inventory Mercer County, North Dakota Report

2 PU-16-18 Filed 01/20/2016 Pages: 46
Affidavit required by NDCC Section 49-22-03 with supporting documentation
Dakota Gasification Company
Mark Foss, Sr. VP & General Counsel



Source: Esri, DigitalGlobe, GeoEye, Earthstar Geographics, CNES/Airbus DS, USDA, USGS, AEX, Getmapping, Aerogrid, IGN, IGP, swisstopo, and the GIS User Community

- Legend**
- Burlington Northern Santa Fe
 - Designated Corridor (1982)
 - Existing Pipeline Route
 - Portion of Existing Pipeline Being Replaced
 - Meter Station
 - PLSS Sections

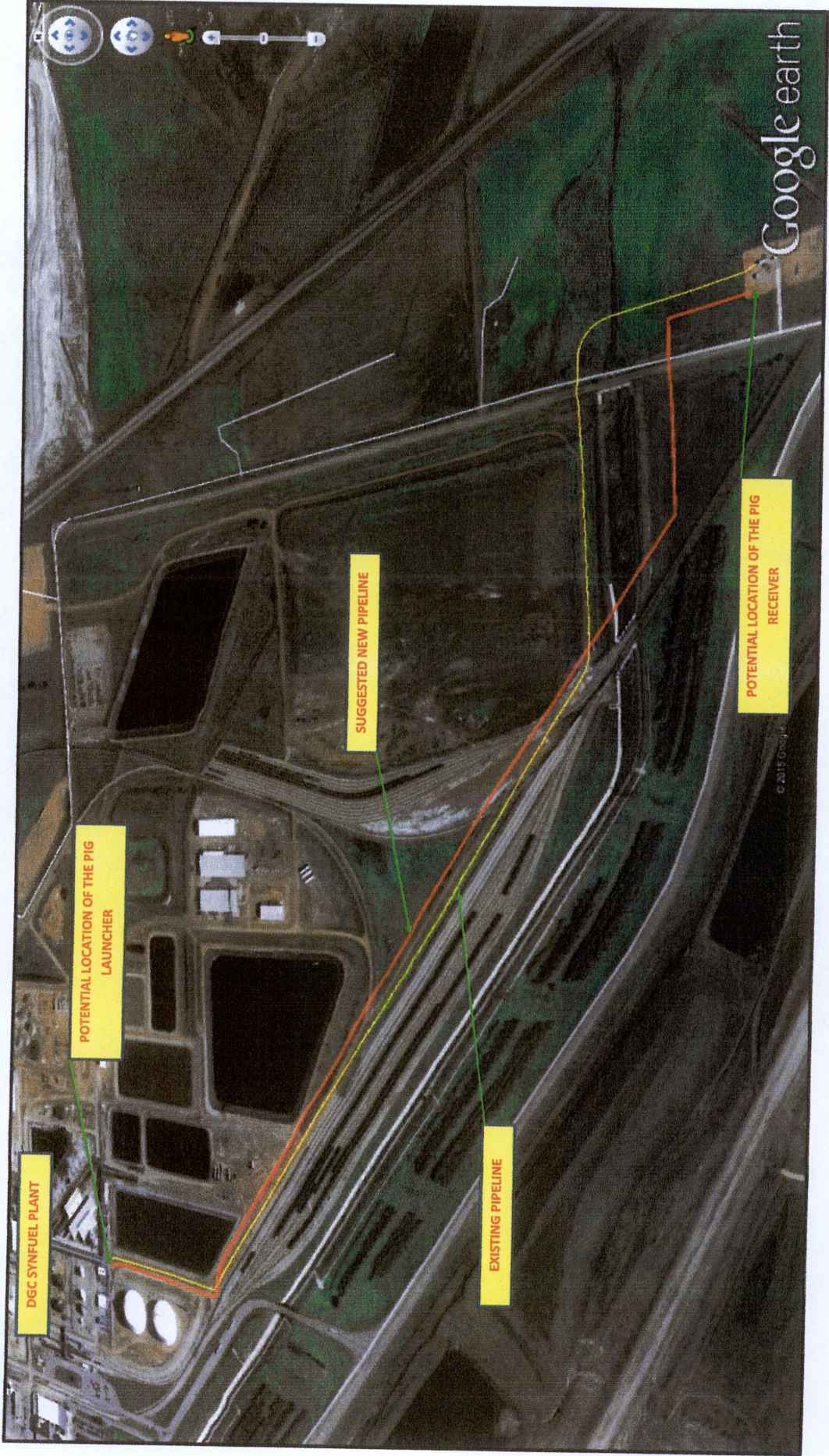
0 0.35 0.7 1.4 Miles

November 2015

USGS 7.5' Quadrangle: Beulah Township 145N, Range(s) 87 & 88W



Figure 1
Designated Corridor (Case Number 10268, 1982);
Proposed Partial Pipeline
 Dakota Gasification Company: Pipeline Replacement Project



DGC SYN FUEL PLANT

POTENTIAL LOCATION OF THE PIG LAUNCHER

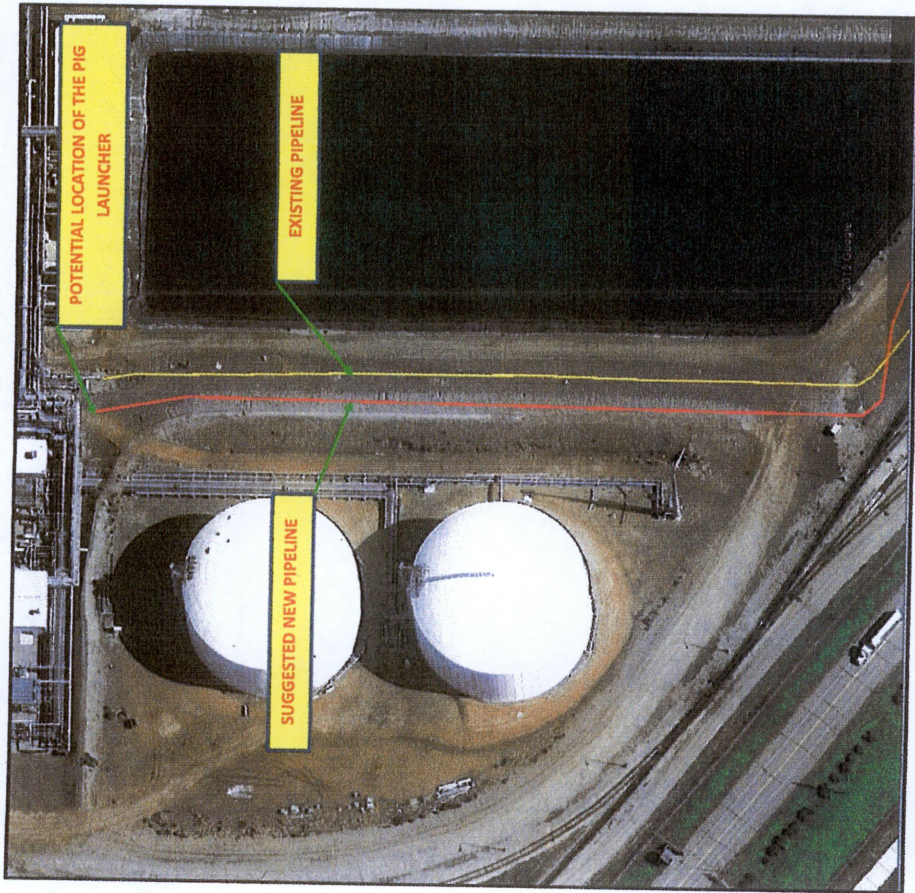
SUGGESTED NEW PIPELINE

EXISTING PIPELINE

POTENTIAL LOCATION OF THE PIG RECEIVER

Google earth

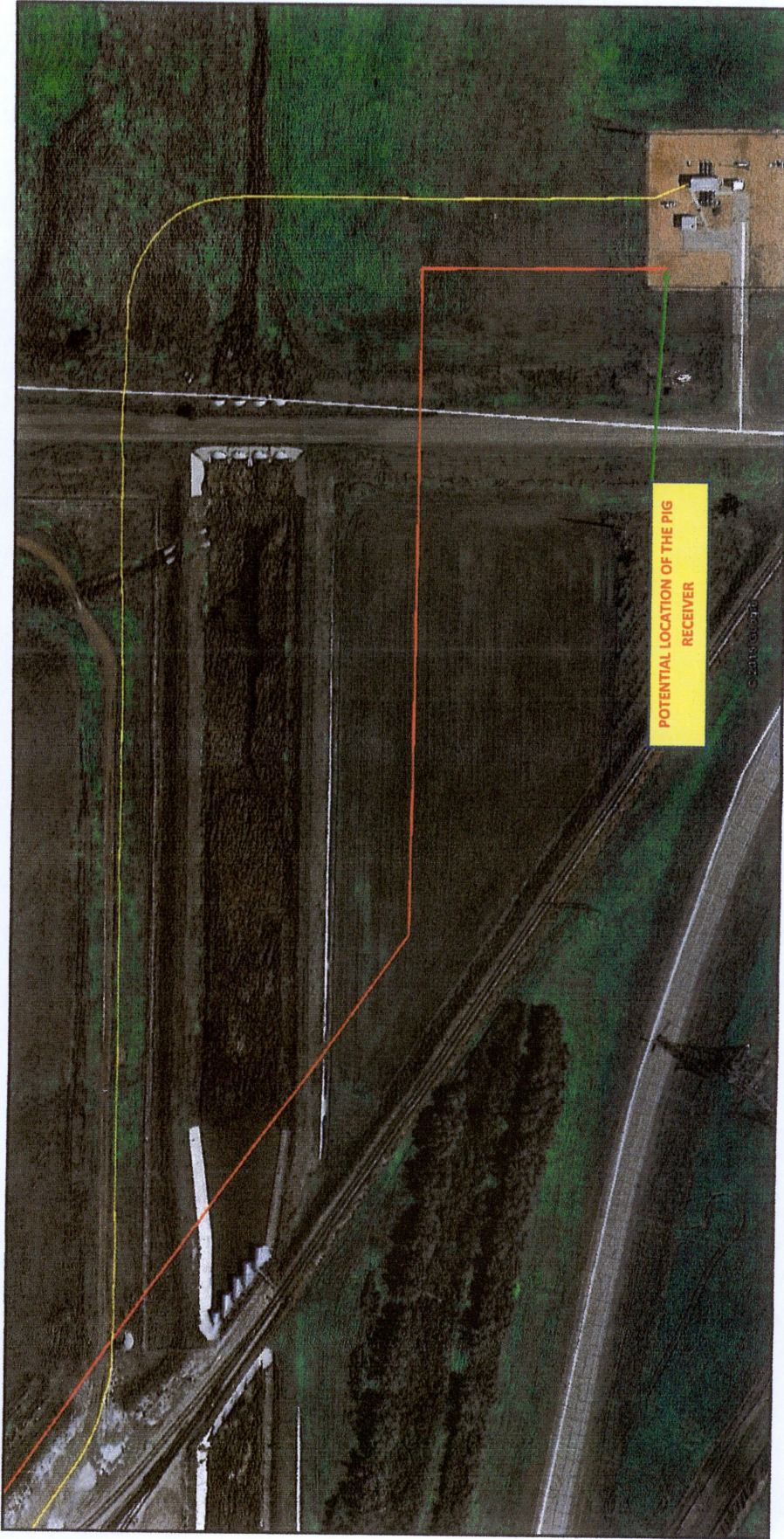
© 2015 Google



POTENTIAL LOCATION OF THE PIG LAUNCHER

EXISTING PIPELINE

SUGGESTED NEW PIPELINE



POTENTIAL LOCATION OF THE PIG RECEIVER