

Brady II Wind Energy Center

Hettinger County, ND
(Ancillary Facilities in Stark County)

Sheet Map: 1

Legend

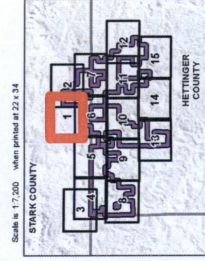
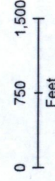
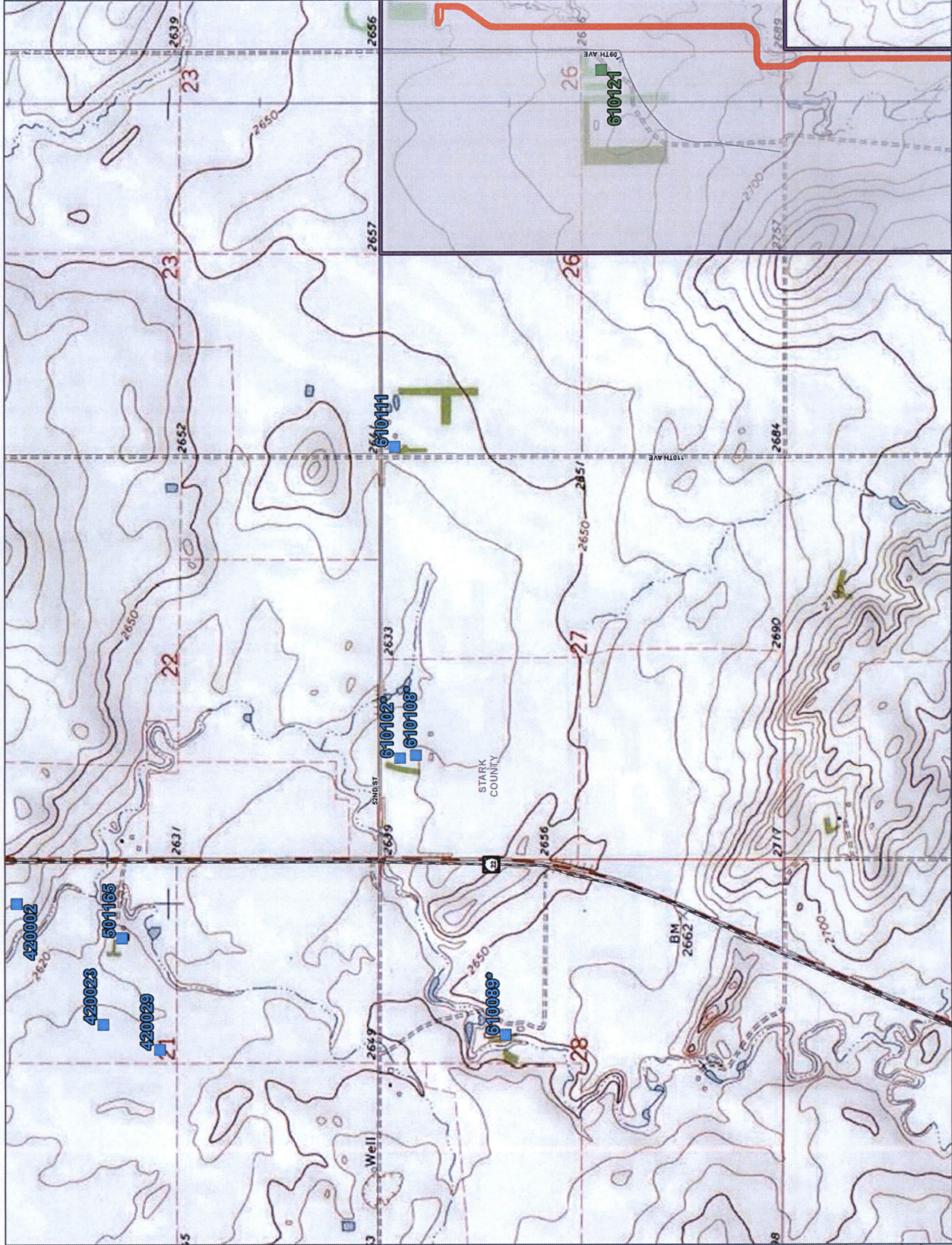
Proposed Project Features

- ▲ Permanent Met Tower
- ▲ Temporary Met Tower
- Proposed Turbine (04/22/16)
- Alternative Turbine (04/22/16)
- Collection System (04/28/16)
- Service Road (05/02/16)
- ▭ Proposed Project Area (04/12/16)

Occupied Receptors

- Participating (receptor on land signed with project)
- Non-Participating (receptor on land that is not signed with project)

* Devices receptors categorized as Non-participating because the receptor is located on land that is not covered by an easement. However, the landowners of these receptors are participants of the Project on property located elsewhere in the Project Area.



Brady II Wind Energy Center

Hettinger County, ND
(Ancillary Facilities in Stark County)

Sheet Map: 2

Legend

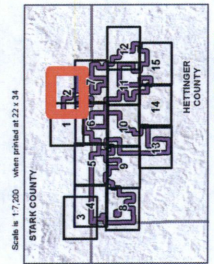
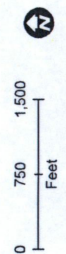
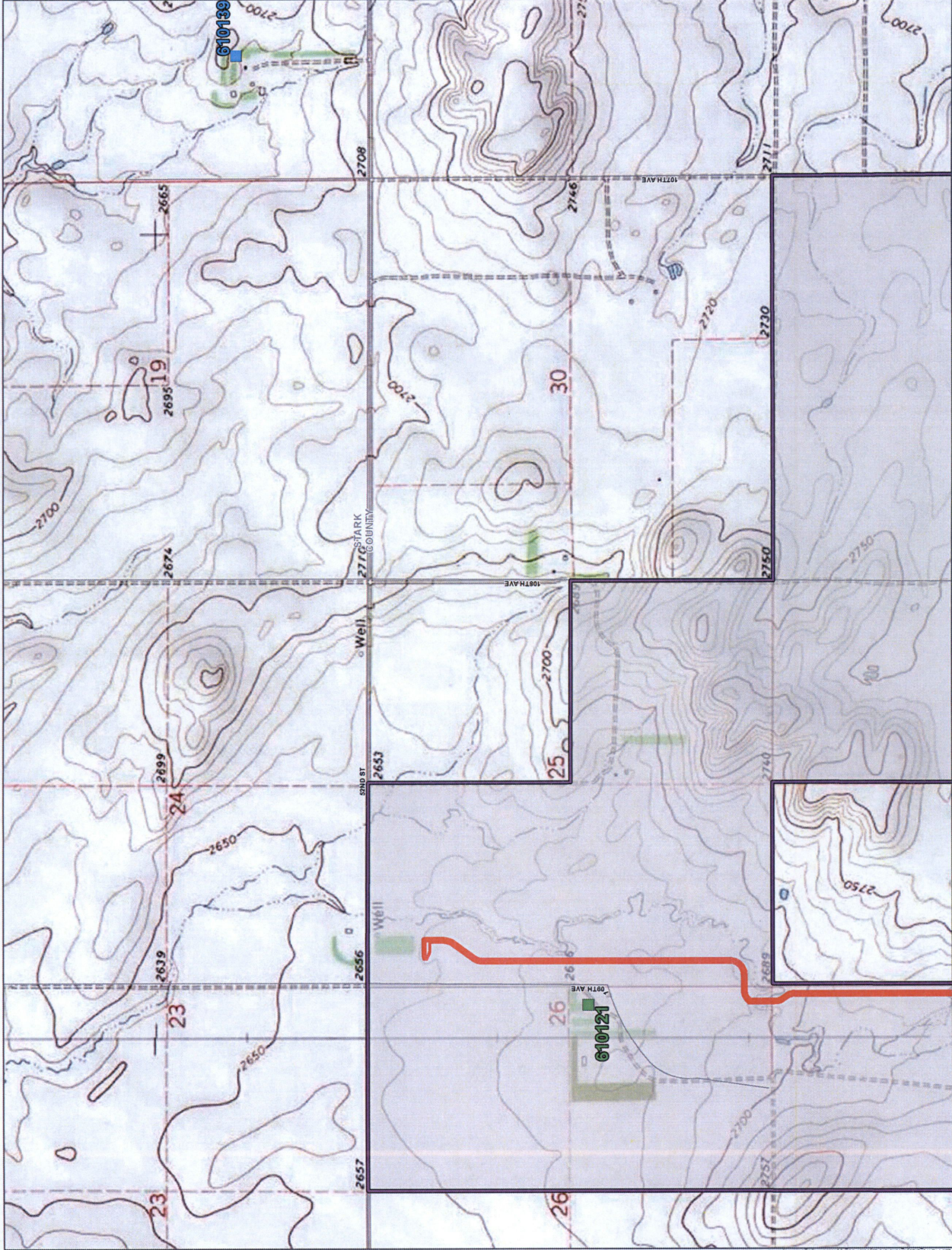
Proposed Project Features

- ▲ Permanent Met Tower
- ▲ Temporary Met Tower
- Proposed Turbine (04/22/16)
- Alternative Turbine (04/22/16)
- Collection System (04/28/16)
- Service Road (05/02/16)
- ▭ Proposed Project Area (04/12/16)

Occupied Receptors

- Participating (receptor on land signed with project)
- Non-Participating (receptor on land that is not signed with project)

* Denotes receptors categorized as Non-participating because the receptor is located on land that is not covered by an easement. However, the landowners of these receptors are participants of the Project on property located elsewhere in the Project Area.



Brady II Wind Energy Center

Hettinger County, ND
(Ancillary Facilities in Stark County)

Sheet Map: 3

Legend

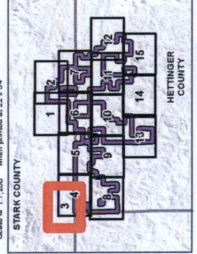
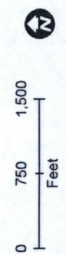
Proposed Project Features

- ▲ Permanent Met Tower
- ▲ Temporary Met Tower
- Proposed Turbine (0422/16)
- Alternative Turbine (0422/16)
- Collection System (0428/16)
- Service Road (0502/16)
- ▭ Proposed Project Area (0412/16)

Occupied Receptors

- Participating
(receptor on land signed with project)
- Non-Participating
(receptor on land that is not signed with project)

* Denotes receptors categorized as Non-participating because the receptor is located on land that is not covered by an easement. However, the landowners of these receptors are participants of the Project on property located elsewhere in the Project Area.



Brady II Wind Energy Center

Hettinger County, ND
(Ancillary Facilities in Stark County)

Sheet Map: 5

Legend

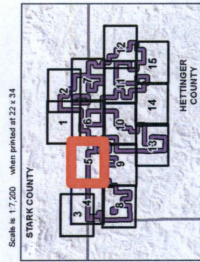
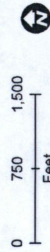
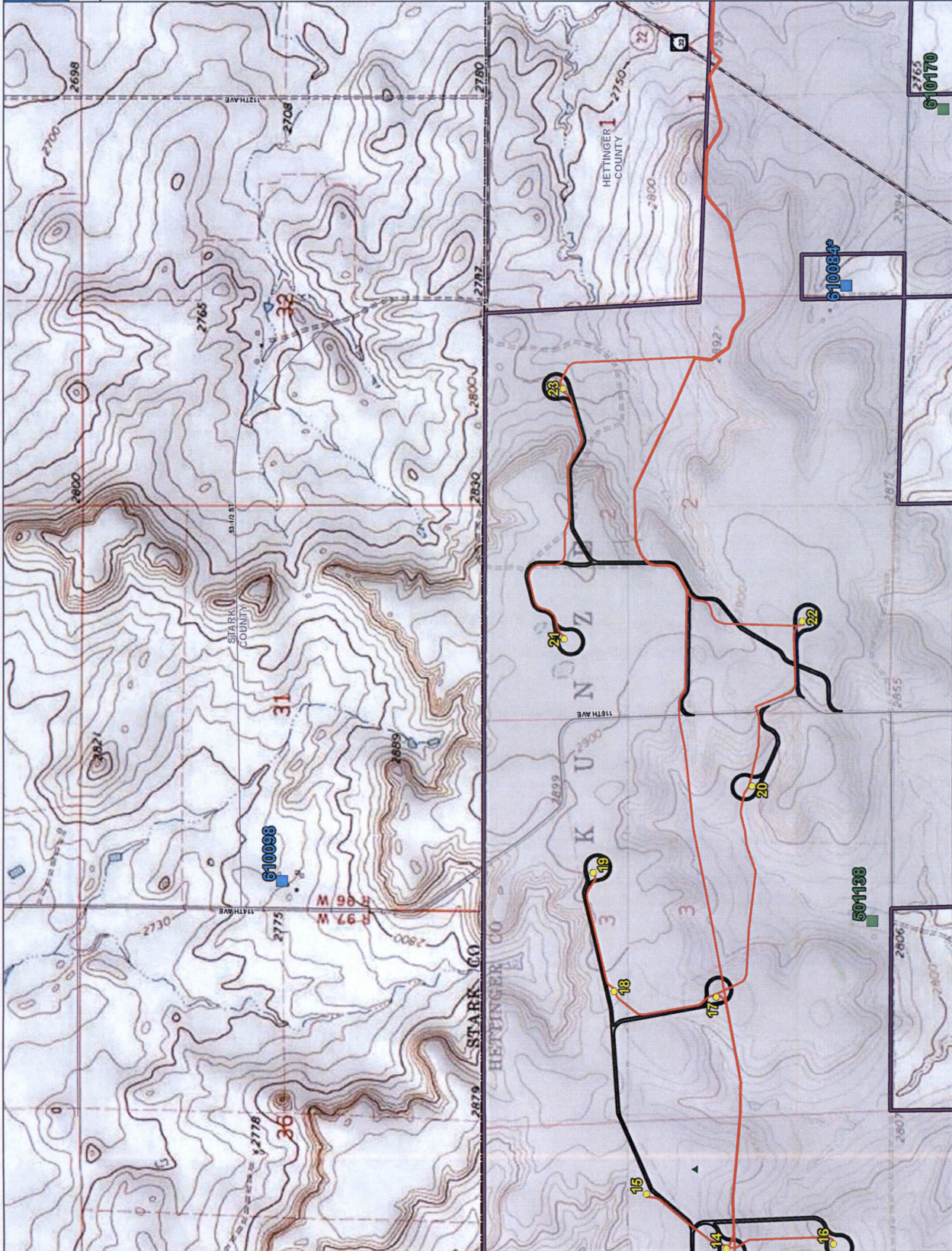
Proposed Project Features

- ▲ Permanent Met Tower
- ▲ Temporary Met Tower
- Proposed Turbine (04/22/16)
- Alternative Turbine (04/22/16)
- Collector System (04/28/16)
- Service Road (05/02/16)
- ▭ Proposed Project Area (04/12/16)

Occupied Receptors

- Participating (receptor on land signed with project)
- Non-Participating (receptor on land that is not signed with project)

*Denotes receptors categorized as Non-participating because the receptor is located on land that is not covered by an easement. However, the landowners at these receptors are participants of the Project on property located elsewhere in the Project Area.



Brady II Wind Energy Center

Hettinger County, ND
(Ancillary Facilities in Stark County)

Sheet Map: 6

Legend

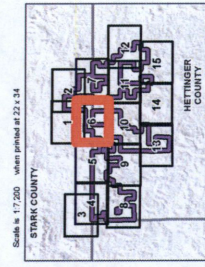
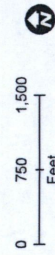
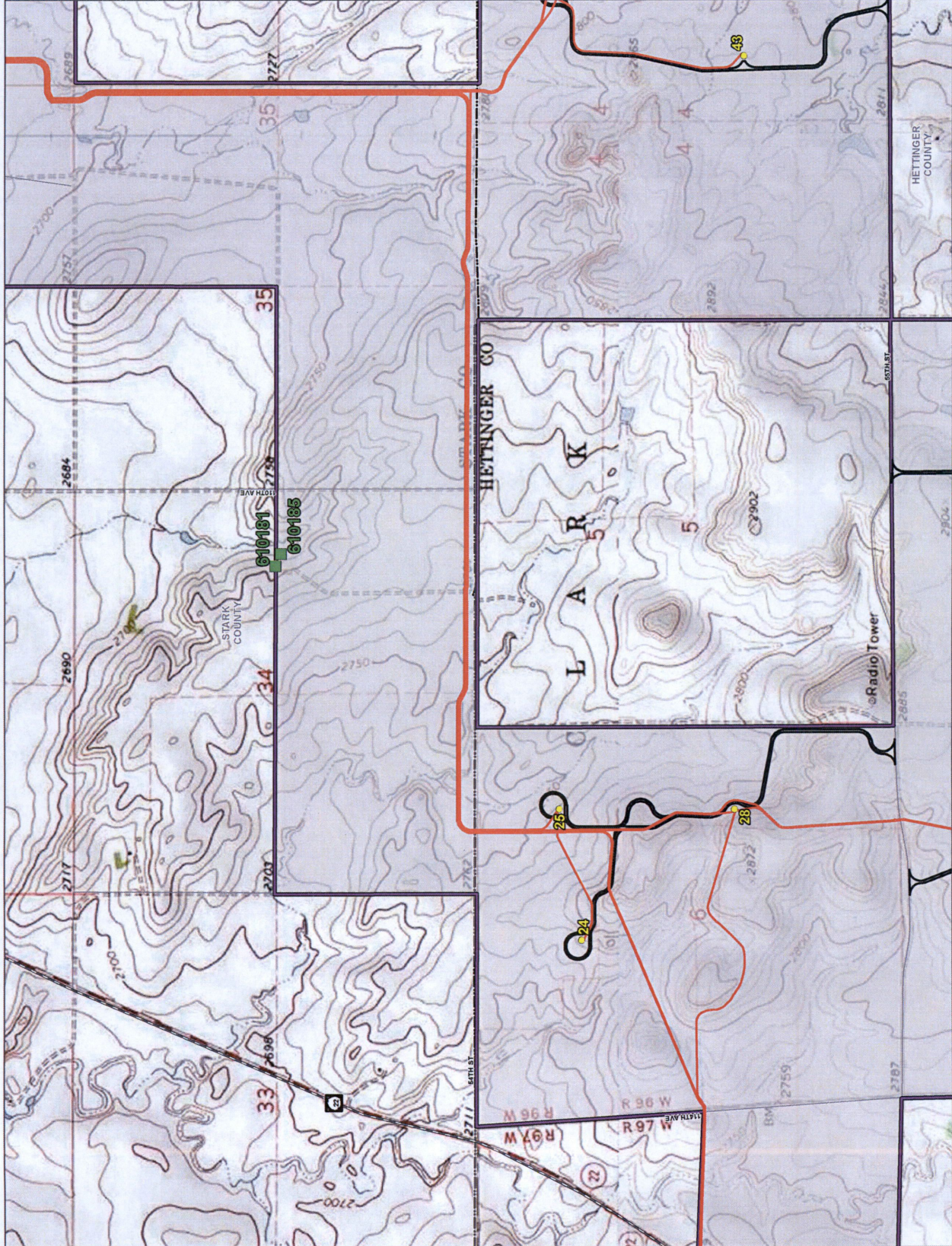
Proposed Project Features

- ▲ Permanent Met Tower
- ▲ Temporary Met Tower
- Proposed Turbine (04/22/16)
- Alternative Turbine (04/22/16)
- Collection System (04/28/16)
- Service Road (05/02/16)
- ▭ Proposed Project Area (04/12/16)

Occupied Receptors

- Participating (receptor on land signed with project)
- Non-Participating (receptor on land that is not signed with project)

*Dimeter receptors categorized as Non-participating because the receptor is located on land that is not covered by an easement. However, the landowners at these receptors are participants of the Project on property located elsewhere in the Project Area.



HETTINGER COUNTY

L A R K

Radio Tower

HETTINGER CO

STARK COUNTY

10TH AVE

5TH ST

R 96 W R 97 W R 98 W

33 34 35

2771 2772 2773 2774 2775 2776 2777 2778 2779 2780 2781 2782 2783 2784 2785 2786 2787 2788 2789 2790 2791 2792 2793 2794 2795 2796 2797 2798 2799 2800 2801 2802 2803 2804 2805 2806 2807 2808 2809 2810 2811 2812 2813 2814 2815 2816 2817 2818 2819 2820 2821 2822 2823 2824 2825 2826 2827 2828 2829 2830 2831 2832 2833 2834 2835 2836 2837 2838 2839 2840 2841 2842 2843 2844 2845 2846 2847 2848 2849 2850 2851 2852 2853 2854 2855 2856 2857 2858 2859 2860 2861 2862 2863 2864 2865 2866 2867 2868 2869 2870 2871 2872 2873 2874 2875 2876 2877 2878 2879 2880 2881 2882 2883 2884 2885 2886 2887 2888 2889 2890 2891 2892 2893 2894 2895 2896 2897 2898 2899 2900 2901 2902 2903 2904 2905 2906 2907 2908 2909 2910 2911 2912 2913 2914 2915 2916 2917 2918 2919 2920 2921 2922 2923 2924 2925 2926 2927 2928 2929 2930 2931 2932 2933 2934 2935 2936 2937 2938 2939 2940 2941 2942 2943 2944 2945 2946 2947 2948 2949 2950 2951 2952 2953 2954 2955 2956 2957 2958 2959 2960 2961 2962 2963 2964 2965 2966 2967 2968 2969 2970 2971 2972 2973 2974 2975 2976 2977 2978 2979 2980 2981 2982 2983 2984 2985 2986 2987 2988 2989 2990 2991 2992 2993 2994 2995 2996 2997 2998 2999 3000

Brady II Wind Energy Center

Hettinger County, ND
(Ancillary Facilities in Stark County)

Sheet Map: 7

Legend

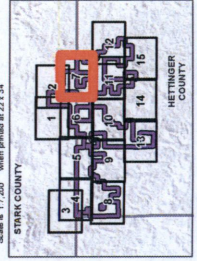
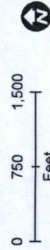
Proposed Project Features

- ▲ Permanent Met Tower
- ▲ Temporary Met Tower
- Proposed Turbine (04/22/16)
- Alternative Turbine (04/22/16)
- Collector System (04/28/16)
- Service Road (05/02/16)
- ▭ Proposed Project Area (04/12/16)

Occupied Receptors

- Participating (receptor on land signed with project)
- Non-Participating (receptor on land that is not signed with project)

*Denotes receptors categorized as Non-participating because the receptor is located on land that is not covered by an easement. However, the landowners at these receptors are participants of the Project on property located elsewhere in the Project Area.



Brady II Wind Energy Center

Hettinger County, ND
(Ancillary Facilities in Stark County)

Sheet Map: 8

Legend

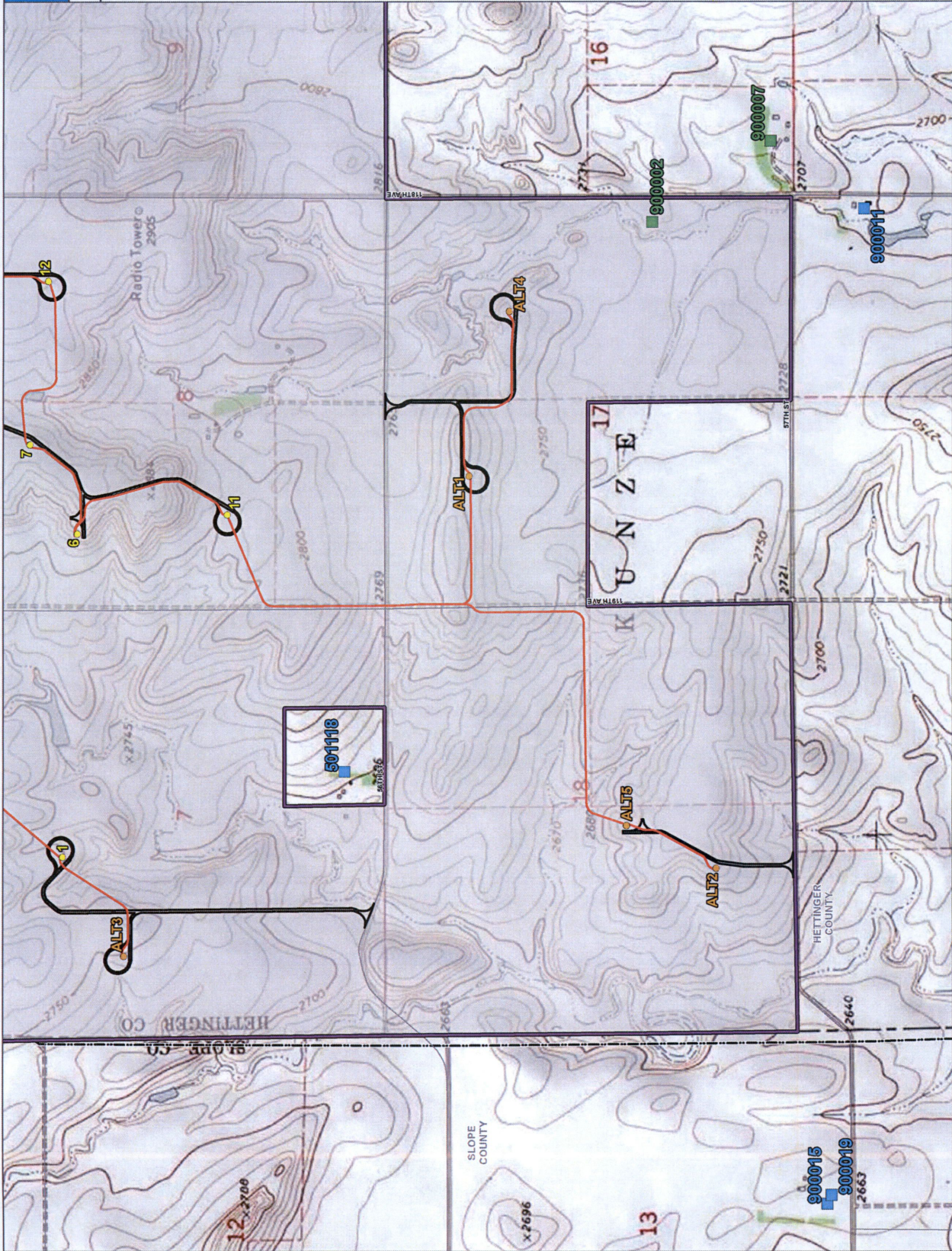
Proposed Project Features

- ▲ Permanent Met Tower
- ▲ Temporary Met Tower
- Proposed Turbine (04/22/16)
- Alternative Turbine (04/22/16)
- Collection System (04/28/16)
- Service Road (05/02/16)
- ▭ Proposed Project Area (04/12/16)

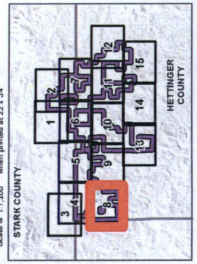
Occupied Receptors

- Participating (receptor on land signed with project)
- Non-Participating (receptor on land that is not signed with project)

* Denotes receptors categorized as Non-participating because the receptor is located on land that is not covered by an easement. However, the landowners at these receptors are participants of the Project or property located elsewhere in the Project Area.



Scale: 1" = 1,200' (value printed at 23 x 34)



Brady II Wind Energy Center

Hettinger County, ND
(Ancillary Facilities in Stark County)

Sheet Map: 10

Legend

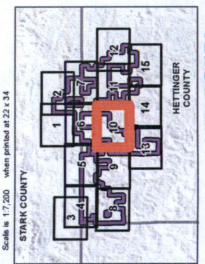
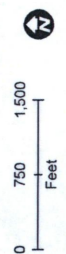
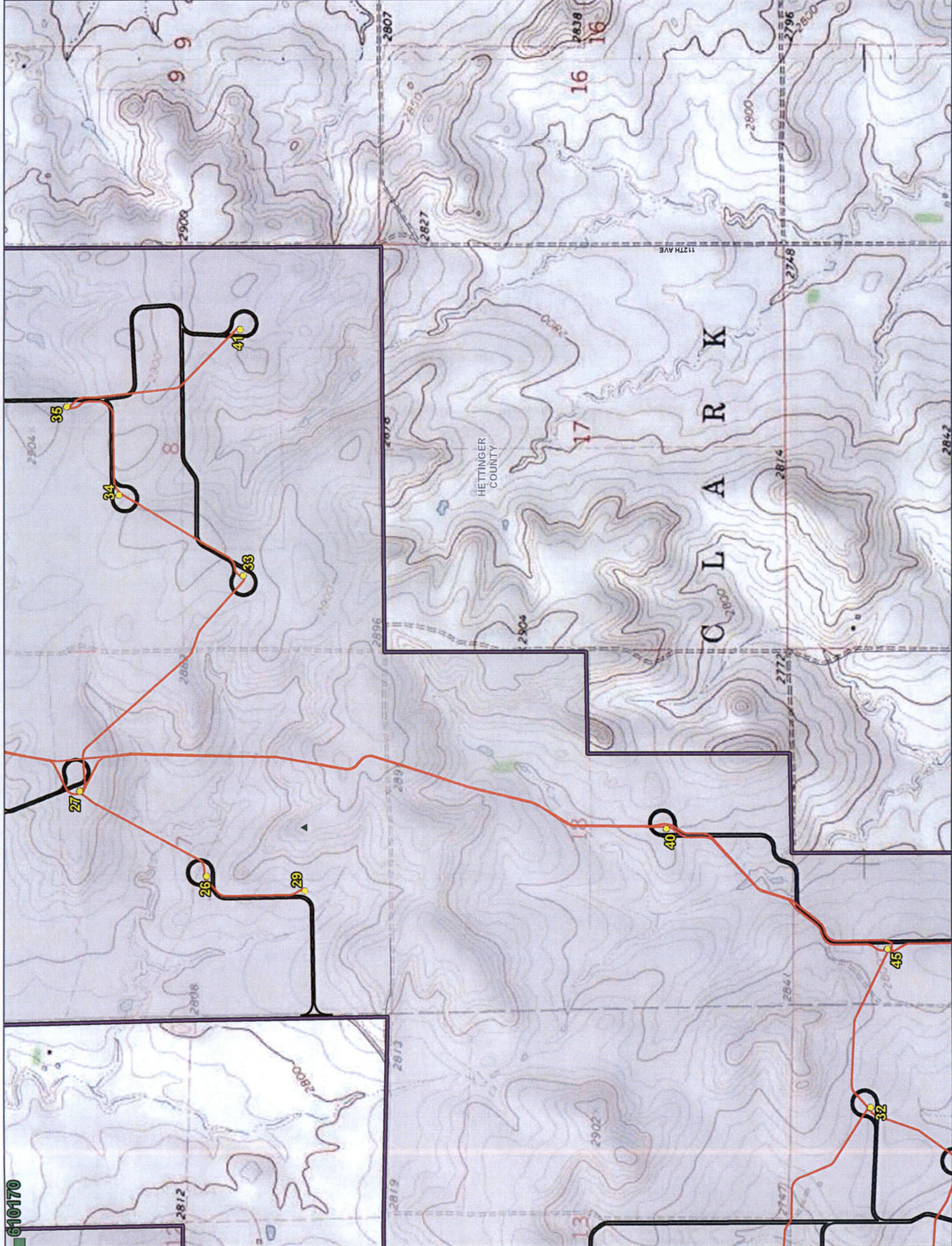
Proposed Project Features

- ▲ Permanent Met Tower
- ▲ Temporary Met Tower
- Proposed Turbine (04/22/16)
- Alternative Turbine (04/22/16)
- Collection System (04/28/16)
- Service Road (05/02/16)
- ▭ Proposed Project Area (04/12/16)

Occupied Receptors

- Participating (receptor on land signed with project)
- Non-Participating (receptor on land that is not signed with project)

* Denotes receptors categorized as Non-participating because the receptor is located on land that is not covered by an easement. However, the landowners of these receptors are participants of the Project on property located elsewhere in the Project Area.



TETRA TECH
NEXTera ENERGY RESOURCES

Brady II Wind Energy Center

Hettinger County, ND
(Ancillary Facilities in Stark County)

Sheet Map: 11

Legend

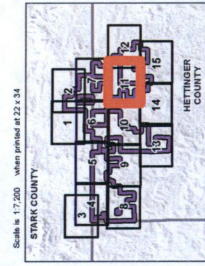
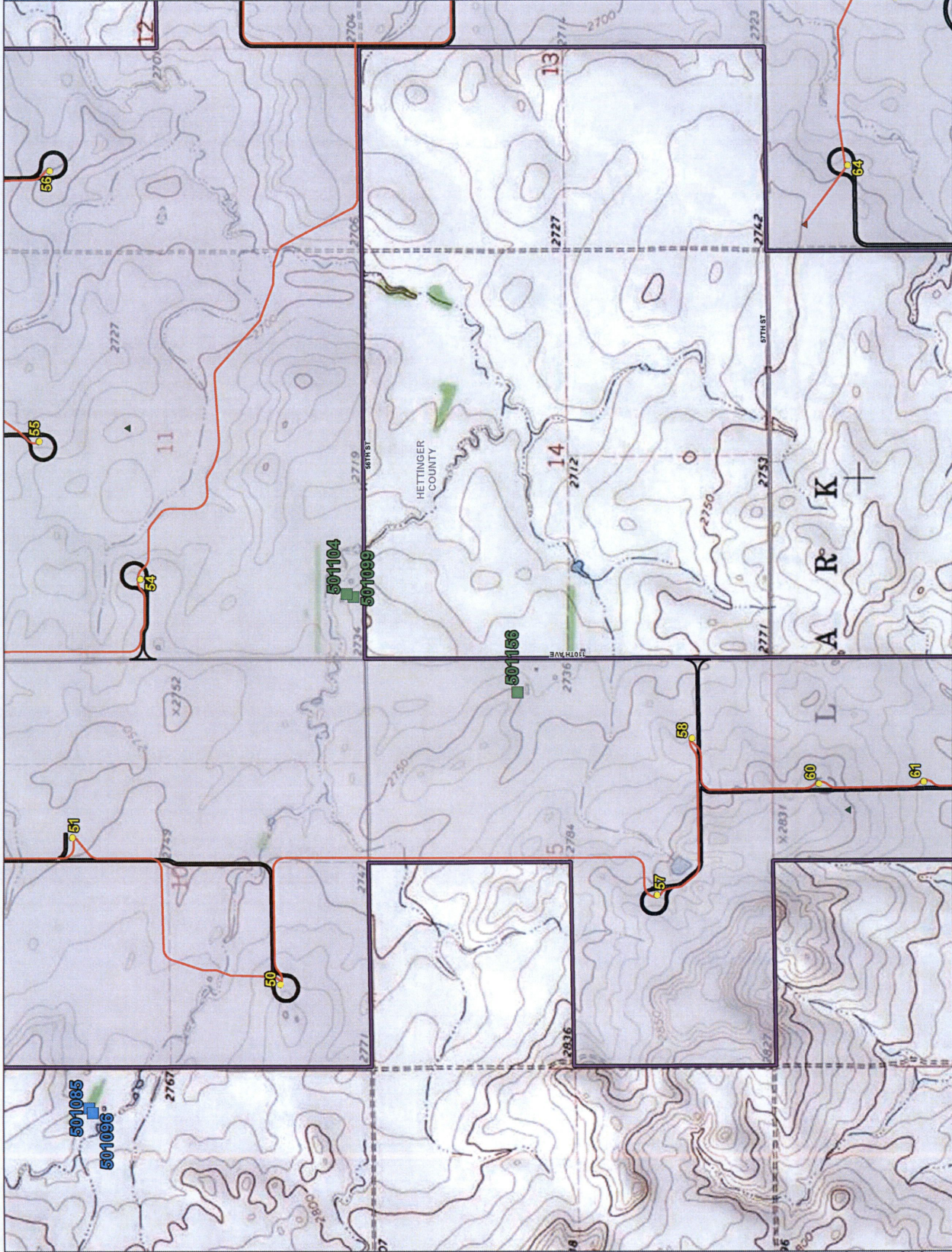
Proposed Project Features

- ▲ Permanent Met Tower
- ▲ Temporary Met Tower
- Proposed Turbine (04/22/16)
- Alternative Turbine (04/22/16)
- Collection System (04/28/16)
- Service Road (05/02/16)
- ▭ Proposed Project Area (04/12/16)

Occupied Receptors

- Participating (receptor on land signed with project)
- Non-Participating (receptor on land that is not signed with project)

* Denotes receptors categorized as Non-participating because the receptor is located on land that is not covered by an easement. However, the landowners at these receptors are participants of the Project on property located elsewhere in the Project Area.



Brady II Wind Energy Center

Hettinger County, ND
(Ancillary Facilities in Stark County)

Sheet Map: 13

Legend

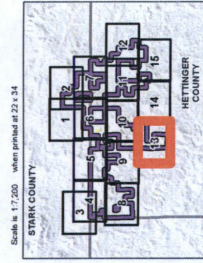
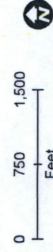
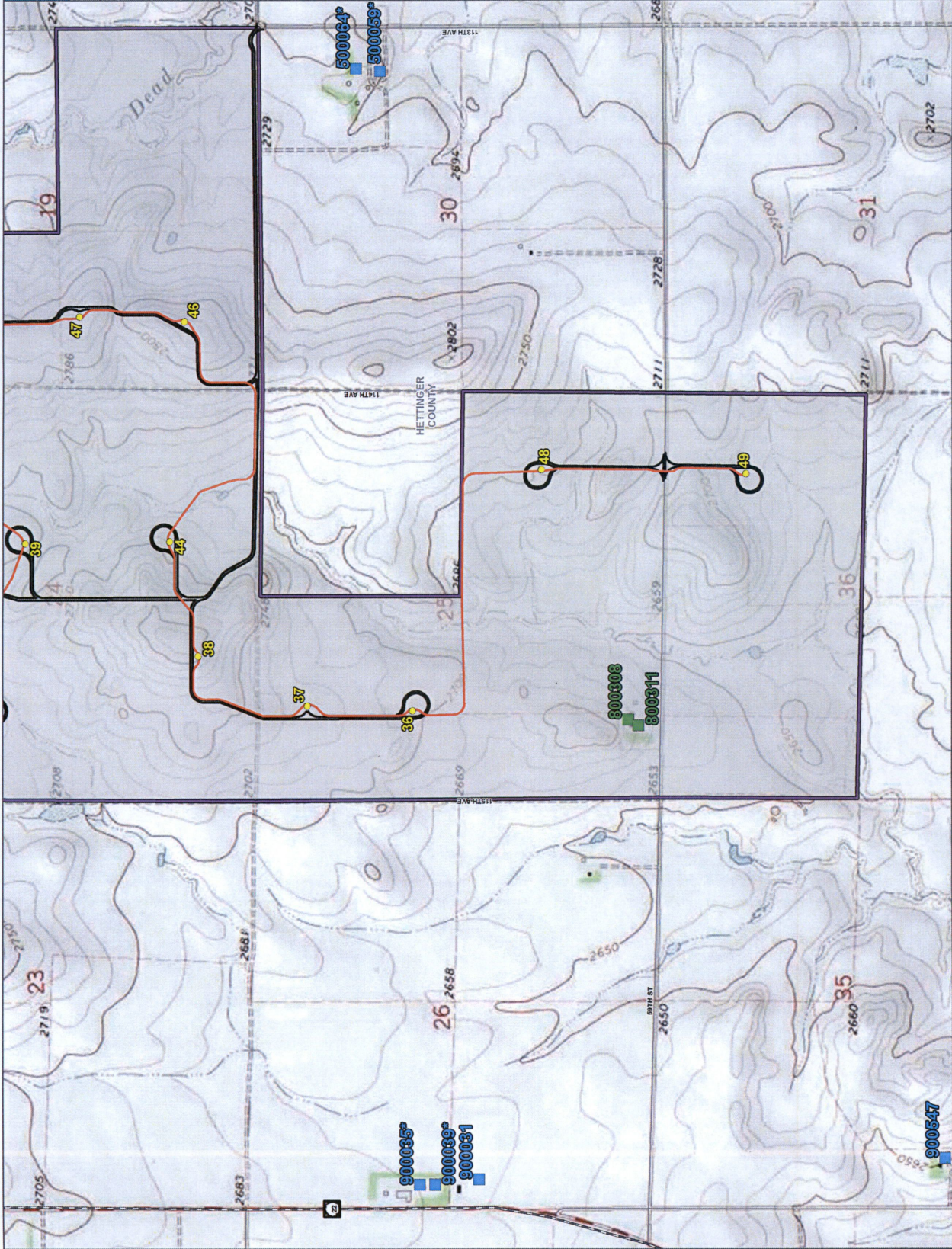
Proposed Project Features

- ▲ Permanent Met Tower
- ▲ Temporary Met Tower
- Proposed Turbine (04/22/16)
- Alternative Turbine (04/22/16)
- Collection System (04/28/16)
- Service Road (05/02/16)
- ▭ Proposed Project Area (04/12/16)

Occupied Receptors

- Participating (receptor on land signed with project)
- Non-Participating (receptor on land that is not signed with project)

*Denotes receptors categorized as Non-participating because the receptor is located on land that is not covered by an easement. However, the landowners at these receptors are participants of the Project on property located elsewhere in the Project Area.



Brady II Wind Energy Center

Hettinger County, ND
(Ancillary Facilities in Stark County)

Sheet Map: 14

Legend

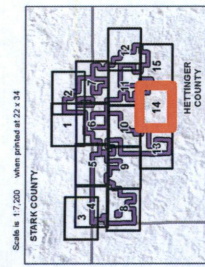
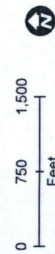
Proposed Project Features

- ▲ Permanent Met Tower
- ▲ Temporary Met Tower
- Proposed Turbine (04/22/16)
- Alternative Turbine (04/22/16)
- Collection System (04/28/16)
- Service Road (05/02/16)
- ▭ Proposed Project Area (04/12/16)

Occupied Receptors

- Participating (receptor on land signed with project)
- Non-Participating (receptor on land that is not signed with project)

* Denotes receptors categorized as Non-participating because the receptor is located on land that is not covered by an easement. However, the landowners of these receptors are participants of the Project on property located elsewhere in the Project Area.



Brady II Wind Energy Center

Hettinger County, ND
(Ancillary Facilities in Stark County)

Sheet Map: 15

Legend

Proposed Project Features

- ▲ Permanent Met Tower
- Temporary Met Tower
- Proposed Turbine (04/22/16)
- Alternative Turbine (04/22/16)
- Collection System (04/28/16)
- Service Road (05/02/16)
- ▭ Proposed Project Area (04/12/16)

Occupied Receptors

- Participating (receptor on land signed with project)
- Non-Participating (receptor on land that is not signed with project)

* Devices receptors categorized as Non-participating because the receptor is located on land that is not covered by an easement. However, the landowners of these receptors are participants of the Project on property located elsewhere in the Project Area.

