

# Brady II Wind Energy Center

Hettinger County, ND  
(Ancillary Facilities in Stark County)

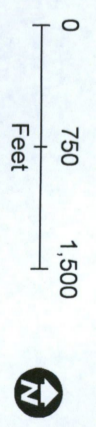
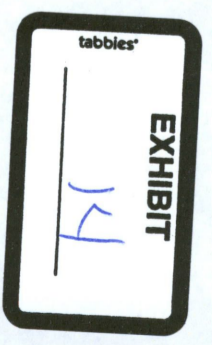
## Sheet Map: 1

### Legend

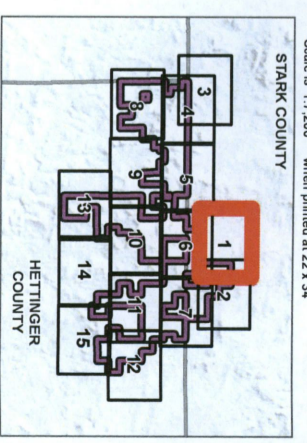
- Proposed Project Features**
- ▲ Permanent Met Tower
  - ▼ Temporary Met Tower
  - Proposed Turbine (04/22/16)
  - Alternative Turbine (04/22/16)
  - Collection System (04/28/16)
  - Service Road (05/02/16)
  - ▭ Proposed Project Area (04/12/16)

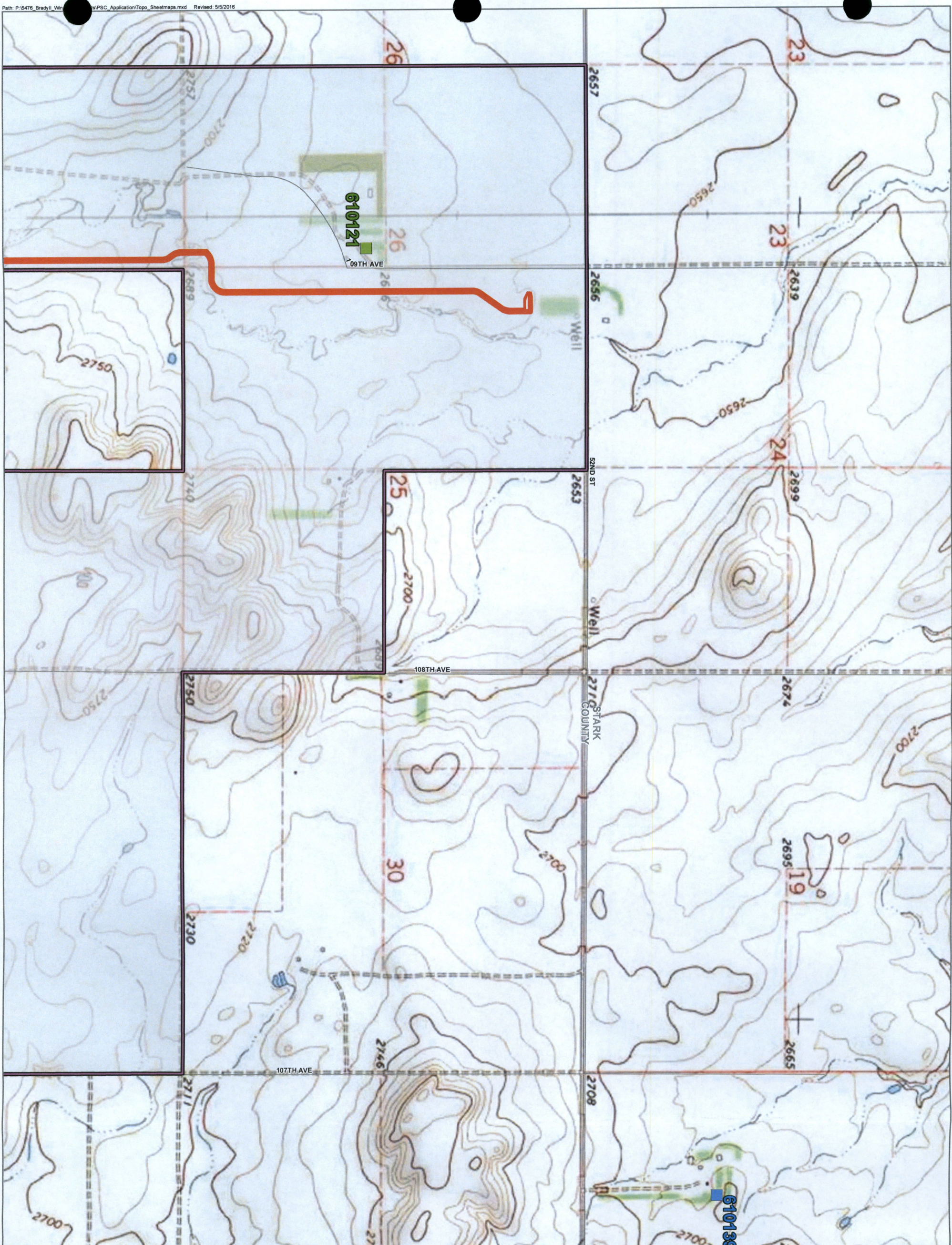
- Occupied Receptors**
- Participating (receptor on land signed with project)
  - Non-Participating (receptor on land that is not signed with project)

\* Denotes receptors categorized as Non-Participating because the receptor is located on land that is not covered by an easement. However, the landowners at these receptors are participants of the Project on property located elsewhere in the Project Area.



Scale is 1:7,200 when printed at 22 x 34





# Brady II Wind Energy Center

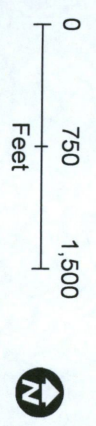
Hettinger County, ND  
(Ancillary Facilities in Stark County)

## Sheet Map: 2

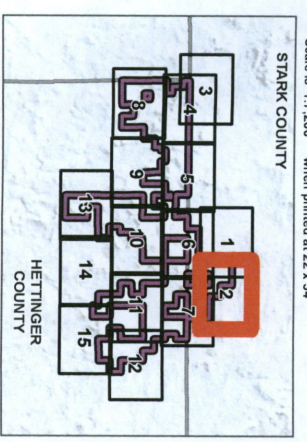
### Legend

- Proposed Project Features**
- ▲ Permanent Met Tower
  - ▼ Temporary Met Tower
  - Proposed Turbine (04/22/16)
  - Alternative Turbine (04/22/16)
  - Collection System (04/28/16)
  - Service Road (05/02/16)
  - ▭ Proposed Project Area (04/12/16)
- Occupied Receptors**
- Participating (receptor on land signed with project)
  - Non-Participating (receptor on land that is not signed with project)

\* Denotes receptors categorized as Non-Participating because the receptor is located on land that is not covered by an easement. However, the landowners at these receptors are participants of the Project on property located elsewhere in the Project Area.



Scale is 1:7,200 when printed at 22 x 34  
STARK COUNTY  
HETTINGER COUNTY





# Brady II Wind Energy Center

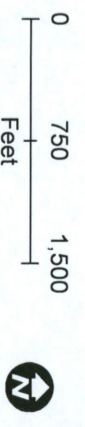
Hettinger County, ND  
(Ancillary Facilities in Stark County)

## Sheet Map: 3

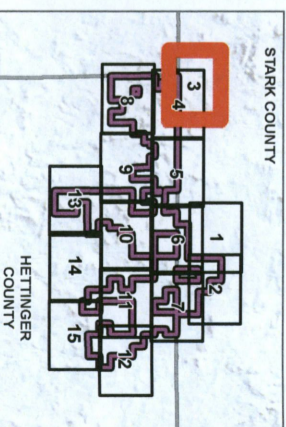
### Legend

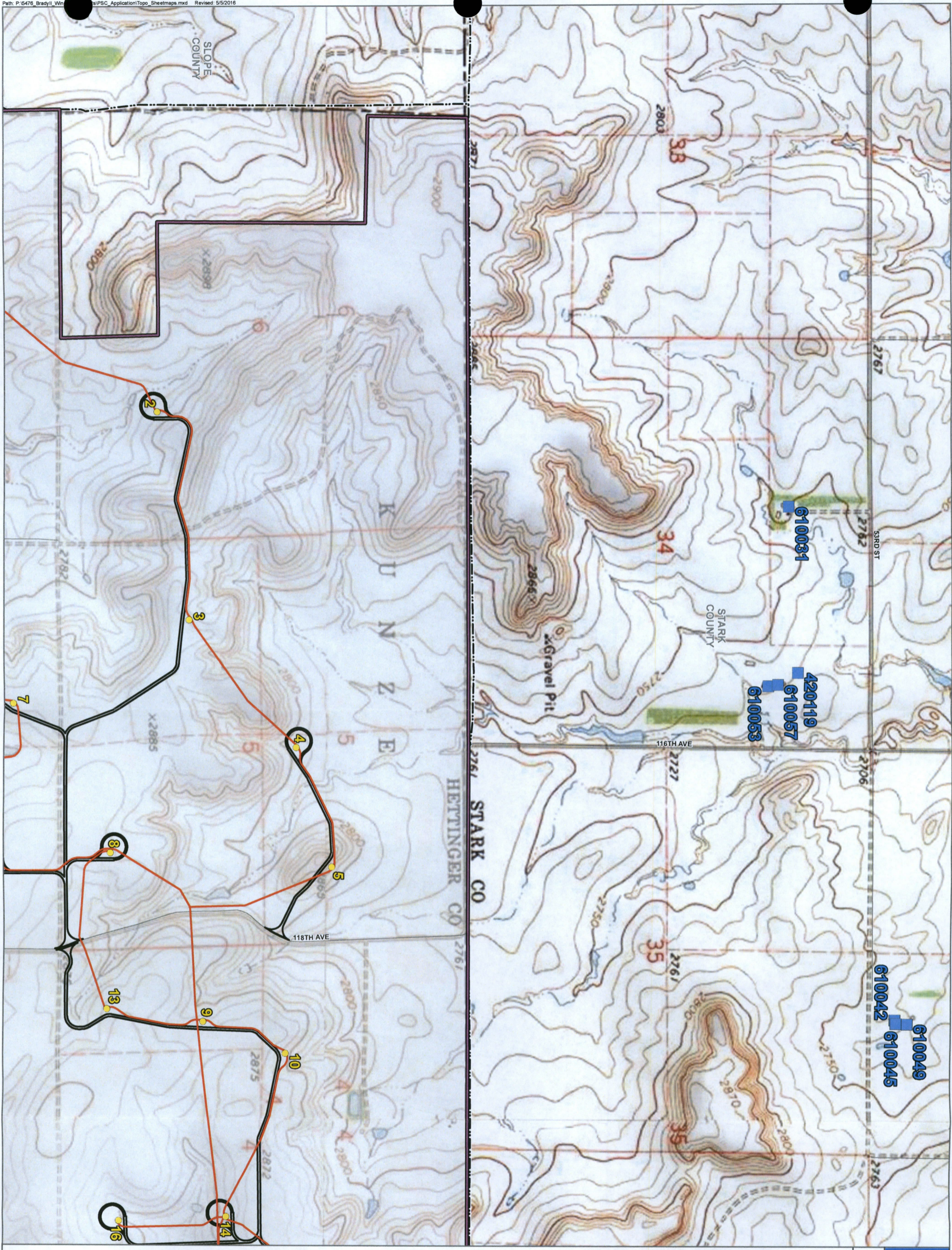
- Proposed Project Features**
- ▲ Permanent Met Tower
  - ▲ Temporary Met Tower
  - Proposed Turbine (04/22/16)
  - Alternative Turbine (04/22/16)
  - Collection System (04/28/16)
  - Service Road (05/02/16)
  - ▭ Proposed Project Area (04/12/16)
- Occupied Receptors**
- Participating (receptor on land signed with project)
  - Non-Participating (receptor on land that is not signed with project)

\* Denotes receptors categorized as Non-participating because the receptor is located on land that is not covered by an easement. However, the landowners at these receptors are participants of the Project on property located elsewhere in the Project Area.



Scale is 1:7,200 when printed at 22 x 34





# Brady II Wind Energy Center

Hettinger County, ND  
(Ancillary Facilities in Stark County)

## Sheet Map: 4

### Legend

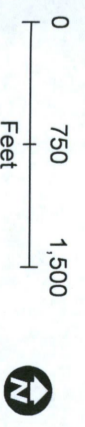
#### Proposed Project Features

- ▲ Permanent Met Tower
- ▲ Temporary Met Tower
- Proposed Turbine (04/22/16)
- Alternative Turbine (04/22/16)
- Collection System (04/28/16)
- Service Road (05/02/16)
- ▭ Proposed Project Area (04/12/16)

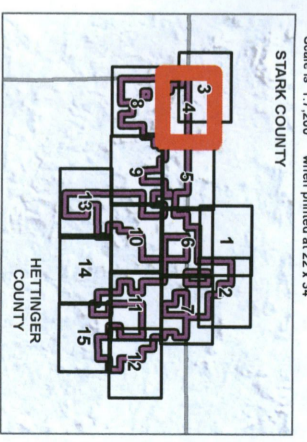
#### Occupied Receptors

- Participating (receptor on land signed with project)
- Non-Participating (receptor on land that is not signed with project)

\* Denotes receptors categorized as Non-Participating because the receptor is located on land that is not covered by an easement. However, the landowners at these receptors are participants of the Project on property located elsewhere in the Project Area.



Scale is 1:7,200 when printed at 22 x 34  
STARK COUNTY  
HETTINGER COUNTY



# Brady II Wind Energy Center

Hettinger County, ND  
(Ancillary Facilities in Stark County)

## Sheet Map: 5

### Legend

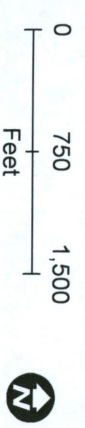
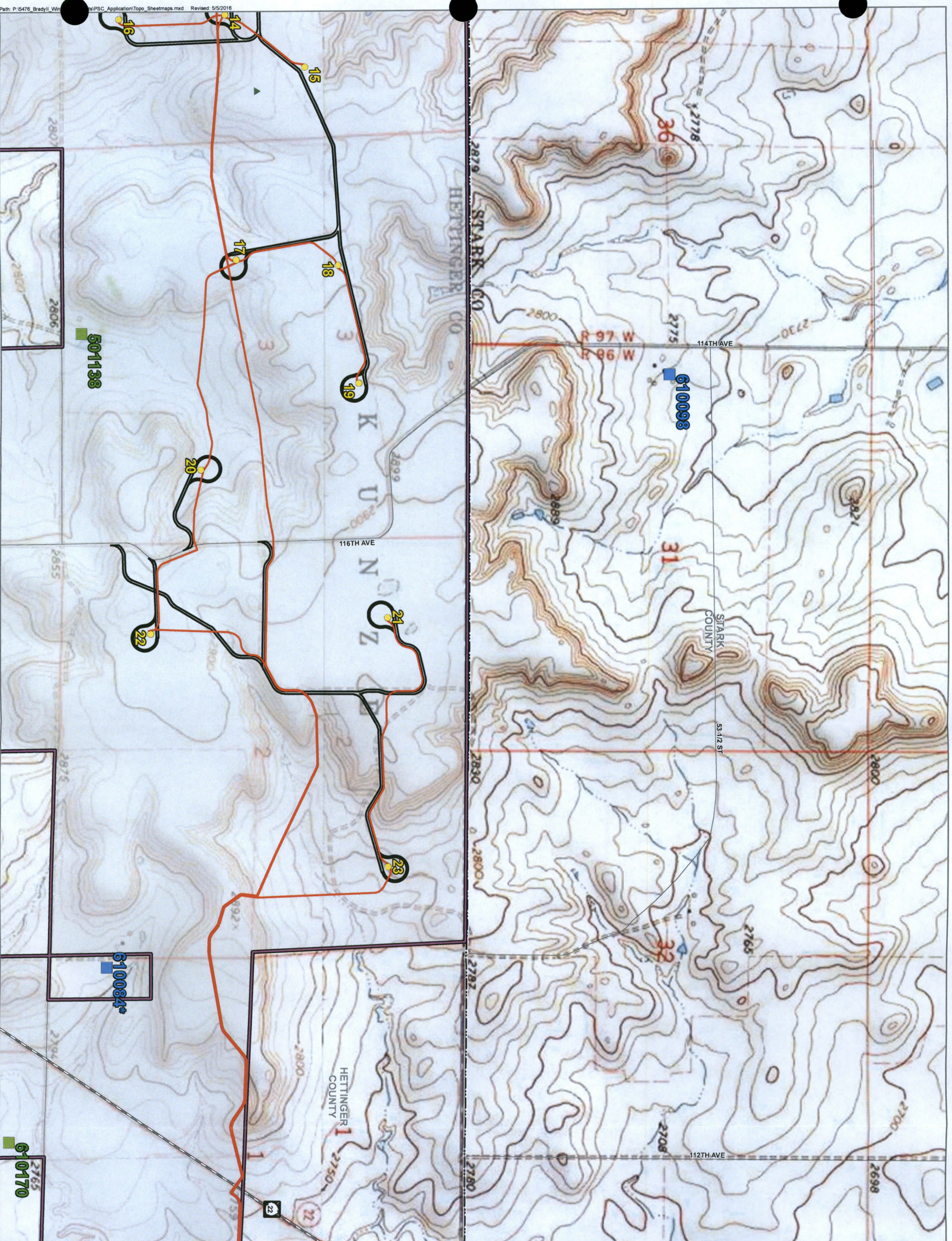
#### Proposed Project Features

- ▲ Permanent Met Tower
- ▲ Temporary Met Tower
- Proposed Turbine (04/22/16)
- Alternative Turbine (04/22/16)
- Collection System (04/28/16)
- Service Road (05/02/16)
- ▭ Proposed Project Area (04/12/16)

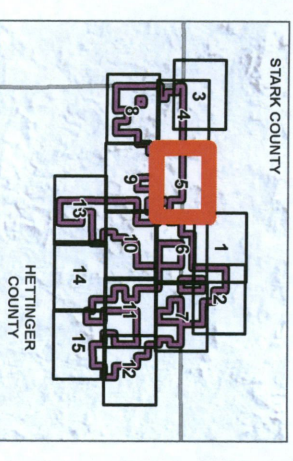
#### Occupied Receptors

- Participating (receptor on land signed with project)
- Non-Participating (receptor on land that is not signed with project)

\* Denotes receptors categorized as Non-participating because the receptor is located on land that is not covered by an easement. However, the landowners at these receptors are participants of the Project on property located elsewhere in the Project Area.



Scale is 1:7,200 when printed at 22 x 34







# Brady II Wind Energy Center

Hettinger County, ND  
(Ancillary Facilities in Stark County)

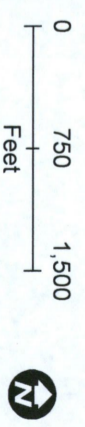
## Sheet Map: 7

### Legend

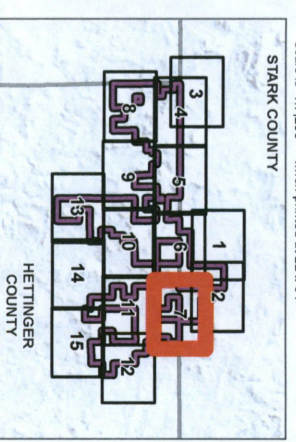
- Proposed Project Features**
- ▲ Permanent Met Tower
  - ▲ Temporary Met Tower
  - Proposed Turbine (04/22/16)
  - Alternative Turbine (04/22/16)
  - Collection System (04/28/16)
  - Service Road (05/02/16)
  - ▭ Proposed Project Area (04/12/16)

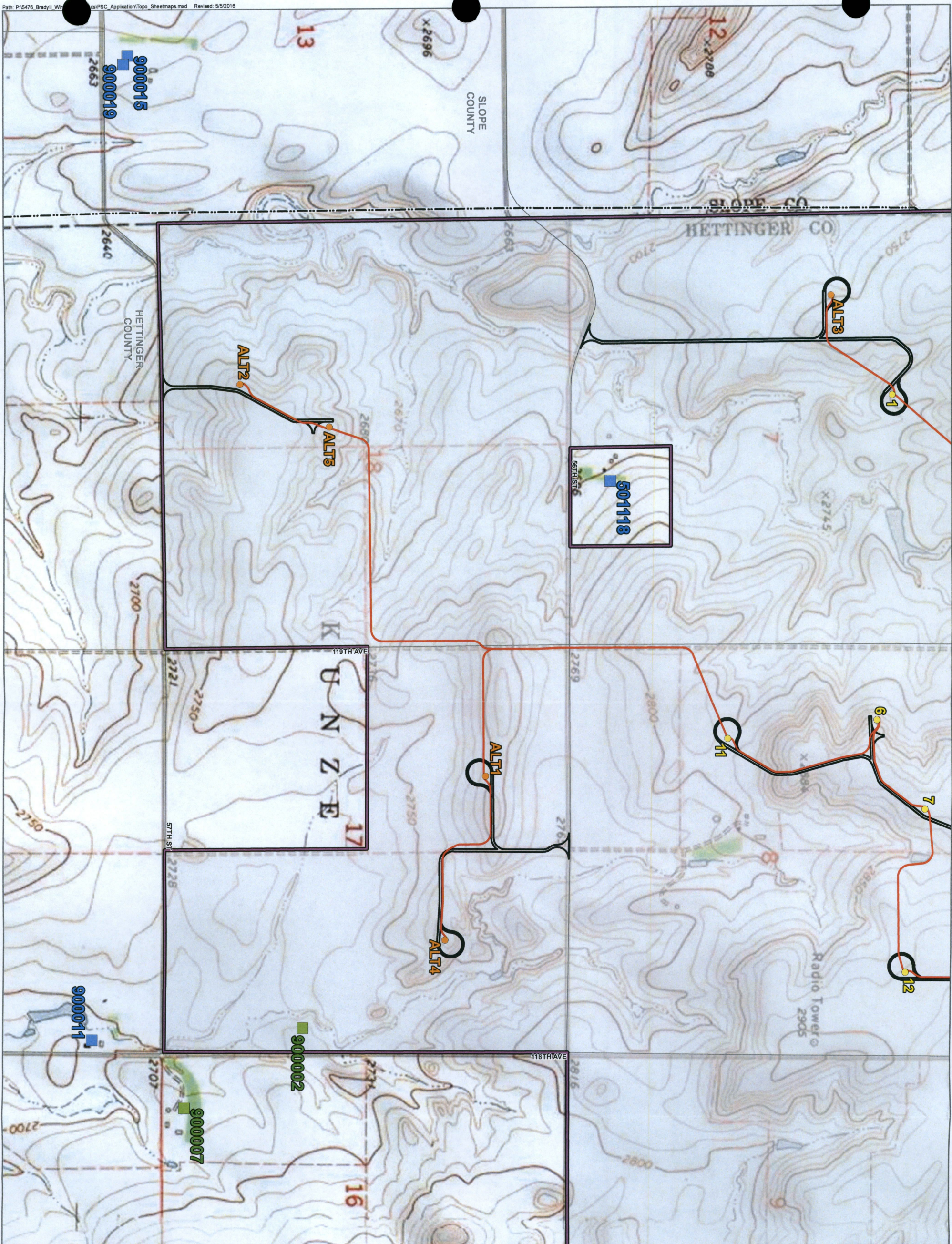
- Occupied Receptors**
- Participating (receptor on land signed with project)
  - Non-Participating (receptor on land that is not signed with project)

\* Denotes receptors categorized as Non-participating because the receptor is located on land that is not covered by an easement. However, the landowners at these receptors are participants of the Project on property located elsewhere in the Project Area.



Scale is 1:7,200 when printed at 22 x 34





# Brady II Wind Energy Center

Hettinger County, ND  
(Ancillary Facilities in Stark County)

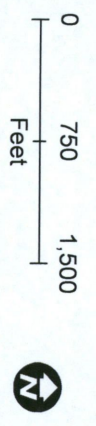
## Sheet Map: 8

### Legend

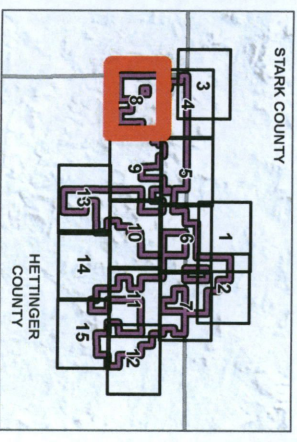
- Proposed Project Features**
- ▲ Permanent Met Tower
  - ▲ Temporary Met Tower
  - Proposed Turbine (04/22/16)
  - Alternative Turbine (04/22/16)
  - Collection System (04/28/16)
  - Service Road (05/02/16)
  - ▭ Proposed Project Area (04/12/16)

- Occupied Receptors**
- Participating (receptor on land signed with project)
  - Non-Participating (receptor on land that is not signed with project)

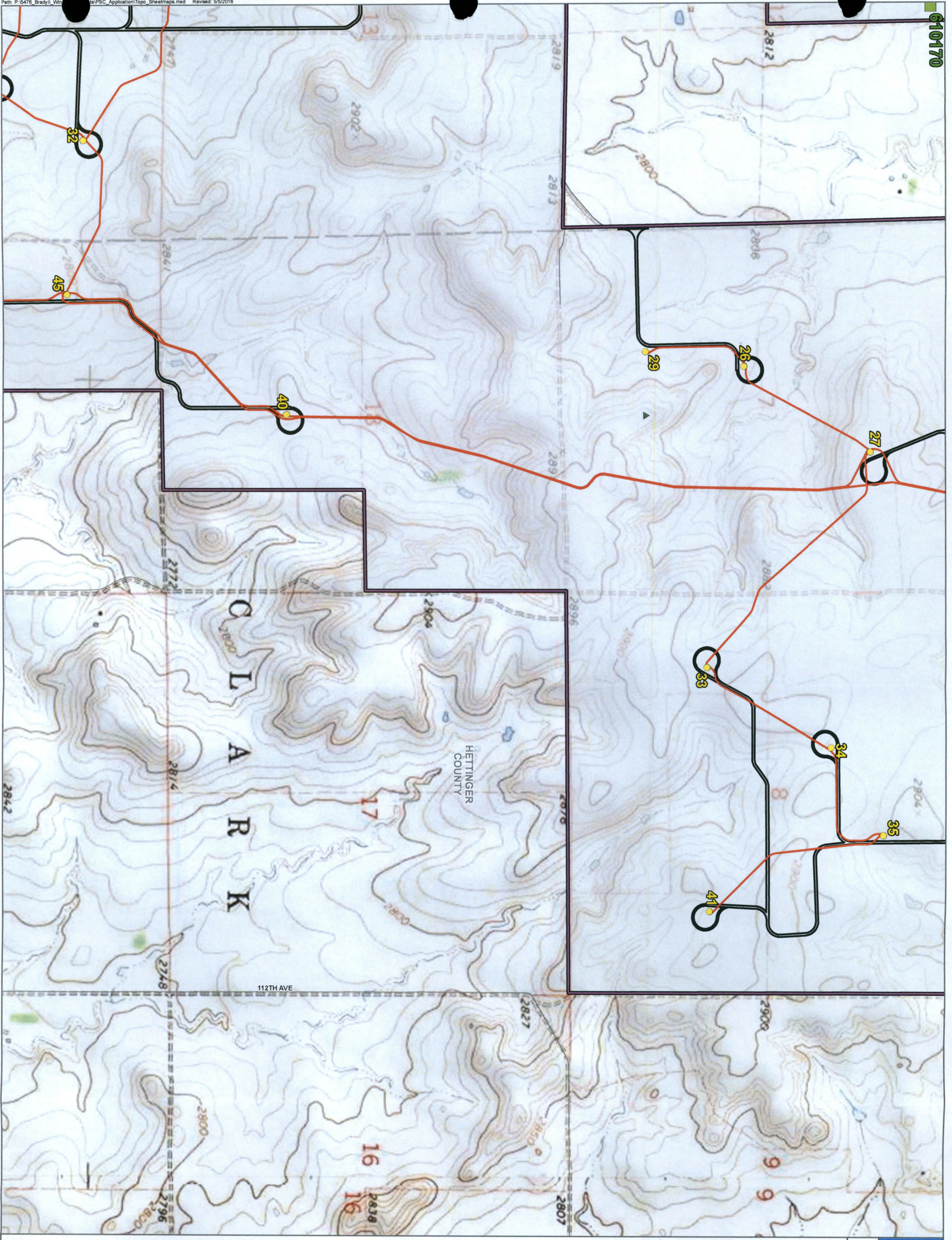
\* Denotes receptors categorized as Non-participating because the receptor is located on land that is not covered by an easement. However, the landowners at these receptors are participants of the Project on property located elsewhere in the Project Area.



Scale is 1:7,200 when printed at 22 x 34  
STARK COUNTY







# Brady II Wind Energy Center

Hettinger County, ND  
(Ancillary Facilities in Stark County)

## Sheet Map: 10

### Legend

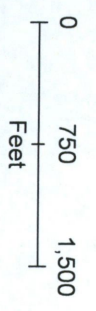
#### Proposed Project Features

- ▲ Permanent Met Tower
- ▲ Temporary Met Tower
- Proposed Turbine (04/22/16)
- Alternative Turbine (04/22/16)
- Collection System (04/28/16)
- Service Road (05/02/16)
- ▭ Proposed Project Area (04/12/16)

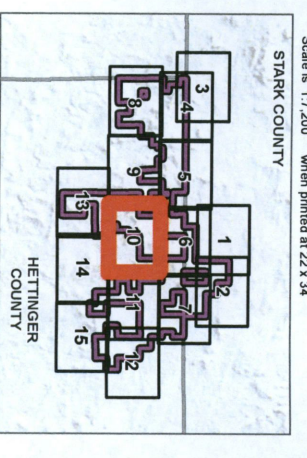
#### Occupied Receptors

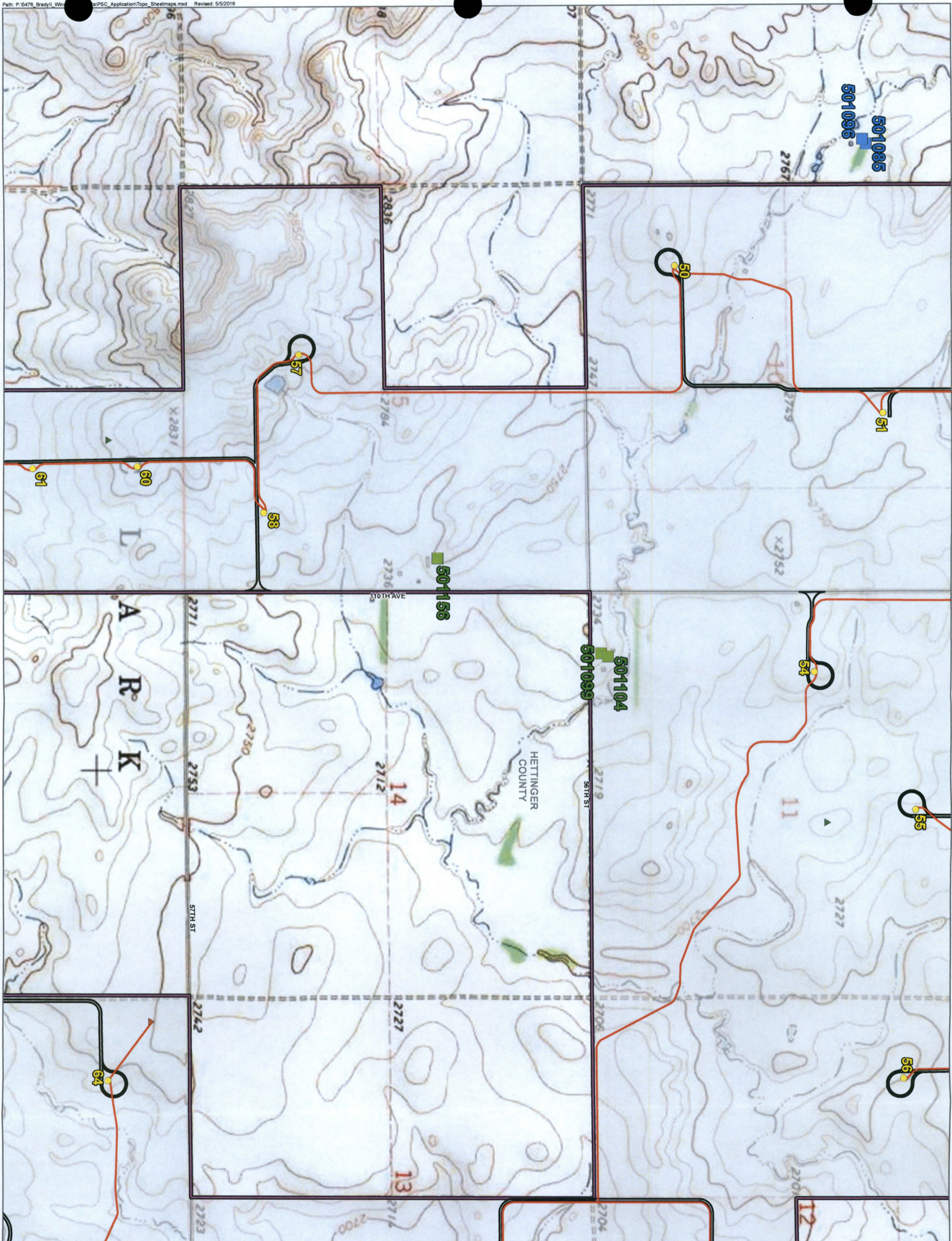
- Participating (receptor on land signed with project)
- Non-Participating (receptor on land that is not signed with project)

\* Denotes receptors categorized as Non-participating because the receptor is located on land that is not covered by an easement. However, the landowners at these receptors are participants of the Project on property located elsewhere in the Project Area.



Scale is 1:7,200 when printed at 22 x 34  
STARK COUNTY





# Brady II Wind Energy Center

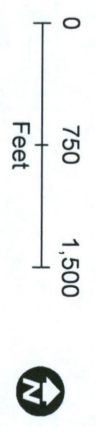
Hettinger County, ND  
(Ancillary Facilities in Stark County)

## Sheet Map: 11

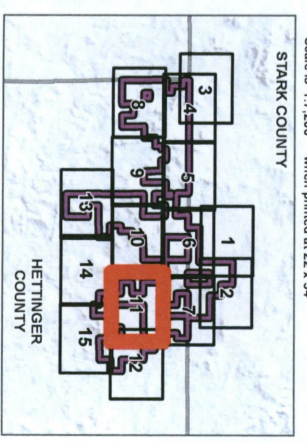
### Legend

- Proposed Project Features**
- ▲ Permanent Met Tower
  - ▼ Temporary Met Tower
  - Proposed Turbine (04/22/16)
  - Alternative Turbine (04/22/16)
  - Collection System (04/28/16)
  - Service Road (05/02/16)
  - ▭ Proposed Project Area (04/12/16)
- Occupied Receptors**
- Participating (receptor on land signed with project)
  - Non-Participating (receptor on land that is not signed with project)

\* Denotes receptors categorized as Non-participating because the receptor is located on land that is not covered by an easement. However, the landowners at these receptors are participants of the Project on property located elsewhere in the Project Area.



Scale is 1:1,200 when printed at 22 x 34  
STARK COUNTY



56

12

59

62

64

66

67

69

2707

2681

Pleasant View Cem

107TH AVE

270

18

HETTINGER COUNTY

2714 ST

2689

R I F L E

20

2683

8

2672

50TH ST

2654

2642

106TH AVE

404\*

401\*

2664

# Brady II Wind Energy Center

Hettinger County, ND  
(Ancillary Facilities in Stark County)

## Sheet Map: 12

### Legend

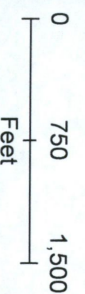
#### Proposed Project Features

- ▲ Permanent Met Tower
- ▲ Temporary Met Tower
- Proposed Turbine (04/22/16)
- Alternative Turbine (04/22/16)
- Collection System (04/28/16)
- Service Road (05/02/16)
- ▭ Proposed Project Area (04/12/16)

#### Occupied Receptors

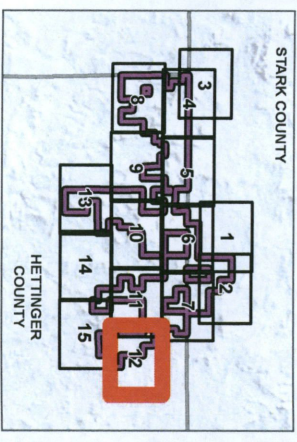
- Participating (receptor on land signed with project)
- Non-Participating (receptor on land that is not signed with project)

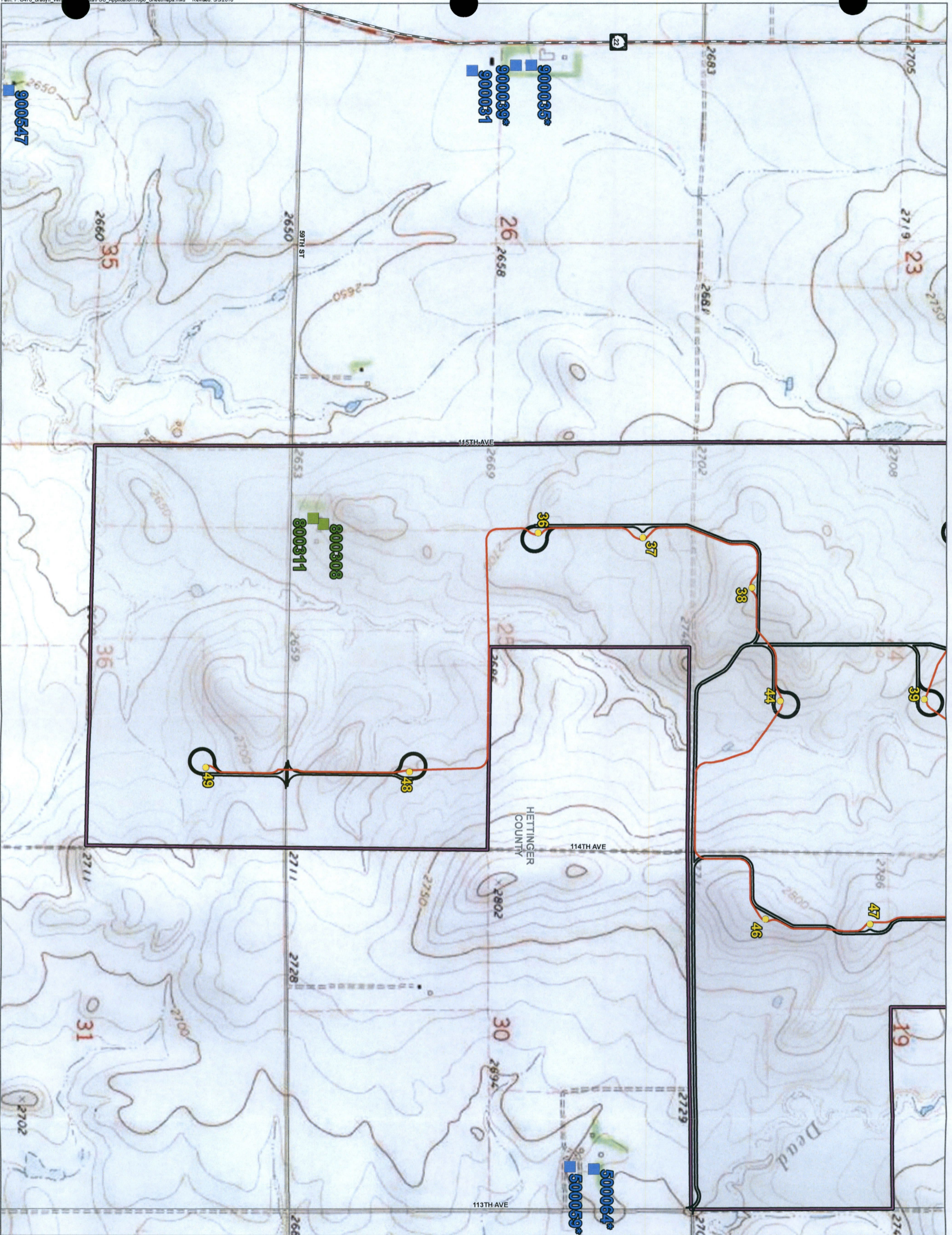
\* Denotes receptors categorized as Non-participating because the receptor is located on land that is not covered by an easement. However, the landowners at these receptors are participants of the Project on property located elsewhere in the Project Area.



Scale is 1:7,200 when printed at 22 x 34

STARK COUNTY





# Brady II Wind Energy Center

Hettinger County, ND  
(Ancillary Facilities in Stark County)

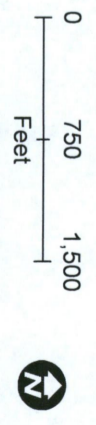
## Sheet Map: 13

### Legend

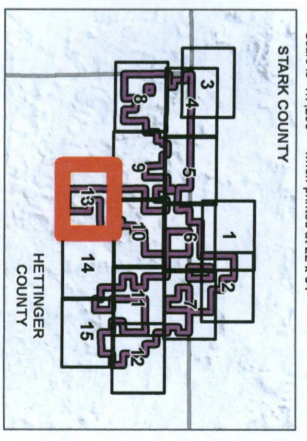
- Proposed Project Features**
- ▲ Permanent Met Tower
  - ▲ Temporary Met Tower
  - Proposed Turbine (04/22/16)
  - Alternative Turbine (04/22/16)
  - Collection System (04/28/16)
  - Service Road (05/02/16)
  - ▭ Proposed Project Area (04/1/16)

- Occupied Receptors**
- Participating (receptor on land signed with project)
  - Non-Participating (receptor on land that is not signed with project)

\* Denotes receptors categorized as Non-participating because the receptor is located on land that is not covered by an easement. However, the landowners at these receptors are participants of the Project on property located elsewhere in the Project Area.



Scale is 1:7,200 when printed at 22 x 34  
STARK COUNTY





# Brady II Wind Energy Center

Hettinger County, ND  
(Ancillary Facilities in Stark County)

## Sheet Map: 14

### Legend

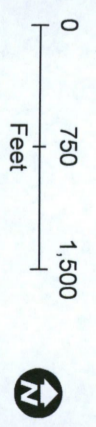
#### Proposed Project Features

- ▲ Permanent Met Tower
- ▲ Temporary Met Tower
- Proposed Turbine (04/22/16)
- Alternative Turbine (04/22/16)
- Collection System (04/28/16)
- Service Road (05/02/16)
- ▭ Proposed Project Area (04/12/16)

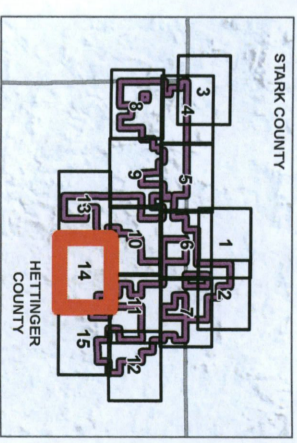
#### Occupied Receptors

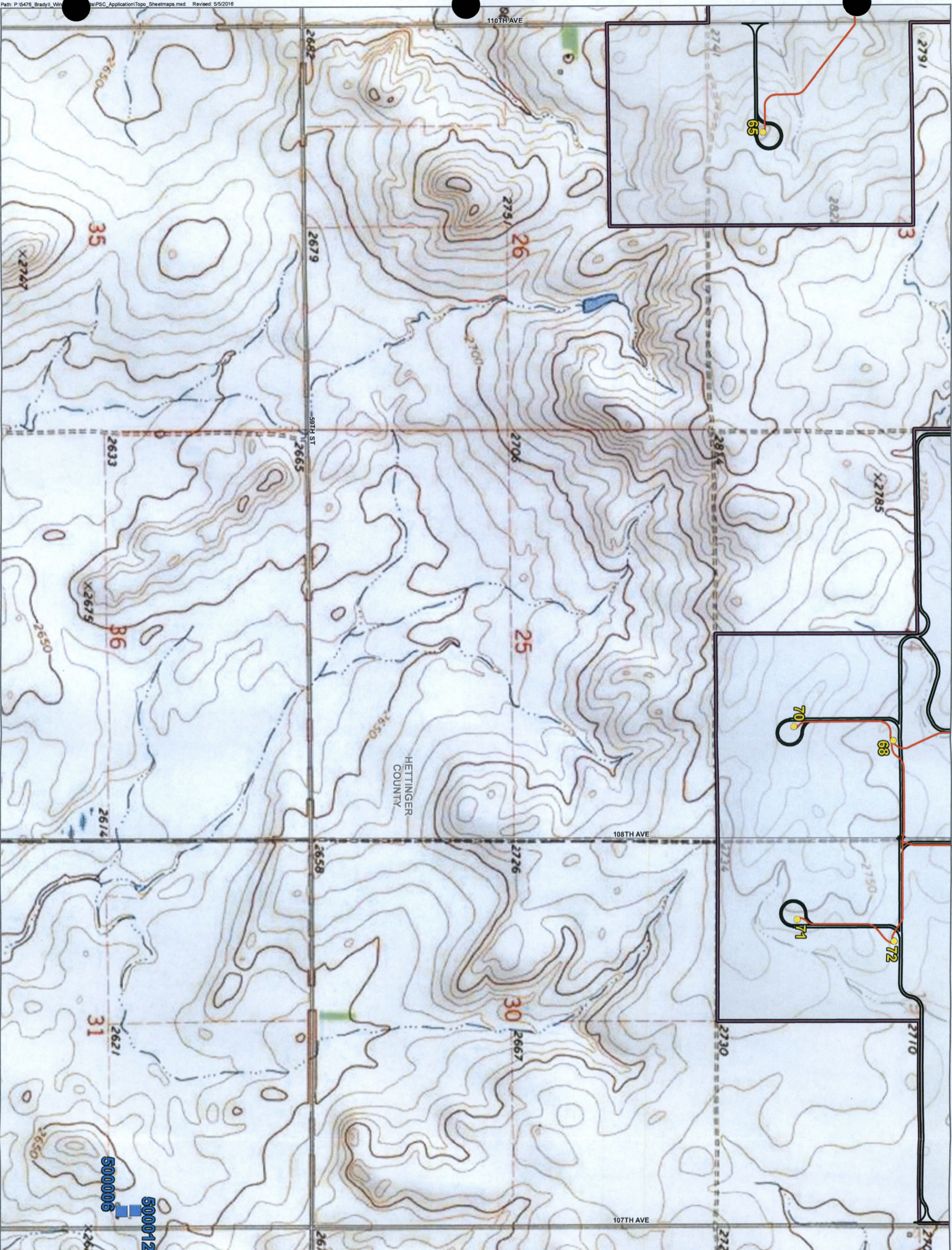
- Participating (receptor on land signed with project)
- Non-Participating (receptor on land that is not signed with project)

\* Denotes receptors categorized as Non-participating because the receptor is located on land that is not covered by an easement. However, the landowners at these receptors are participants of the Project on property located elsewhere in the Project Area.



Scale is 1:7,200 when printed at 22 x 34  
STARK COUNTY  
HETTINGER COUNTY





# Brady II Wind Energy Center

Hettinger County, ND  
(Ancillary Facilities in Stark County)

## Sheet Map: 15

### Legend

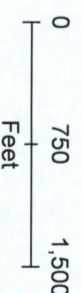
#### Proposed Project Features

- ▲ Permanent Met Tower
- ▲ Temporary Met Tower
- Proposed Turbine (04/22/16)
- Alternative Turbine (04/22/16)
- Collection System (04/28/16)
- Service Road (05/02/16)
- ▭ Proposed Project Area (04/12/16)

#### Occupied Receptors

- Participating (receptor on land signed with project)
- Non-Participating (receptor on land that is not signed with project)

\* Denotes receptors categorized as Non-participating because the receptor is located on land that is not covered by an easement. However, the landowners at these receptors are participants of the Project on property located elsewhere in the Project Area.



Scale is 1:7,200 when printed at 22 x 34

STARK COUNTY

