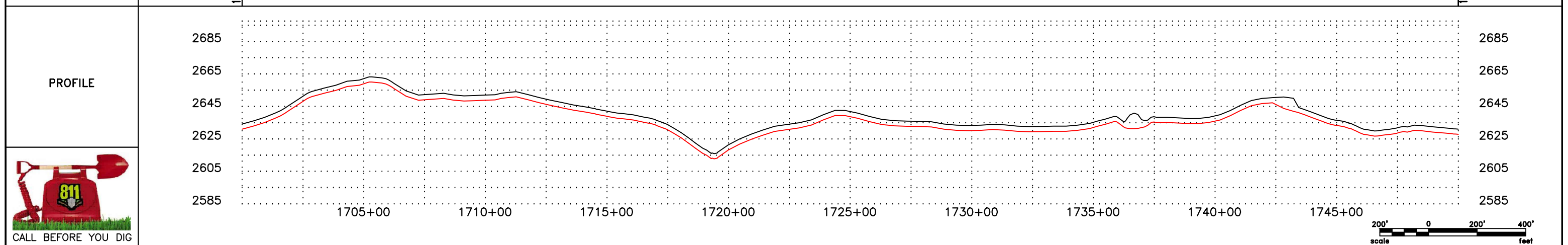
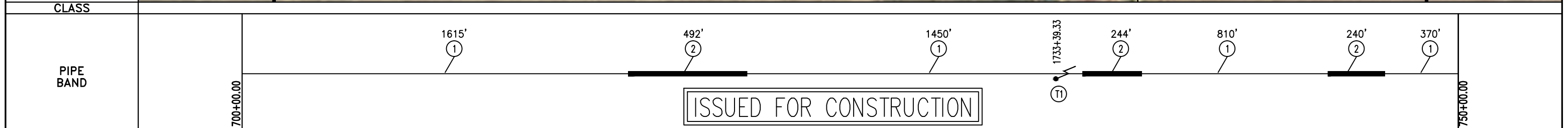
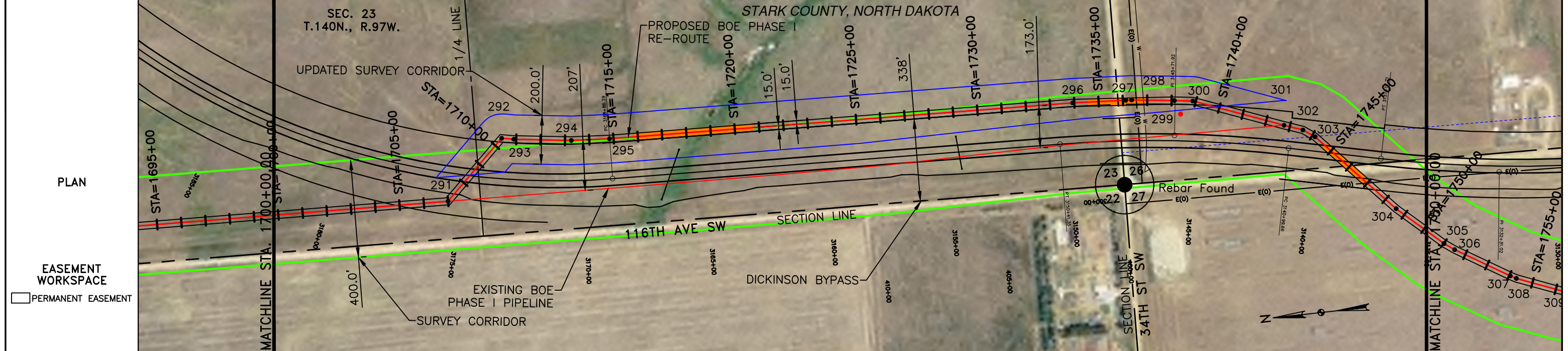


OWNERSHIP: STATE OF NORTH DAKOTA (NW1/4, SW1/4 & SE1/4, 3579.86 FEET, 216.96 RODS); ARTHUR S RIDL, ETAL (NW1/4, 1012.71 FEET, 61.38 RODS); ARTHUR S RIDL, ETAL (NE1/4, 407.43 FEET, 24.69 RODS)

STATIONING: 1700+00.00 to 1750+00.00. Key points include 1707+00.00 P.I. - 4459'56" L.I., 1708+88.13 1/4 LINE, 1709+37.32 EXISTING FENCE, 1710+39.62 P.I. - 5404'50" RT., 1710+89.93 P.I. - 3212'25" L.I., 1713+26.16 P.I. - 338'22" L.I., 1714+83.78 P.I. - 157'04" L.I., 1715+87.29 BEGIN BORE, 1716+44.38 EXISTING FENCE, 1720+76.14 END BORE, 1733+93.41 P.I. - 306'19" RT., 1734+55.62 BEGIN BORE, 1735+38.79 EXISTING FENCE, 1735+79.86 SECTION LINE, 1736+11.81 P.I. - 0'0" RT., 1736+36.03 P.I. - 336'34" RT., 1736+53.83 OVERHEAD POWER LINES, 1736+60.89 EXISTING FENCE, 1736+84.44 EXISTING UNDERGROUND WATERLINE, 1736+98.95 END BORE, 1738+11.27 P.I. - 243'15" RT., 1738+87.55 P.I. - 1328'15" RT., 1738+92.87 EXISTING PIPELINE, 1742+75.10 P.I. - 0'56'55" L.I., 1743+55.17 P.I. - 1533'54" RT., 1744+10.43 EXISTING NORTHWESTERN BELL TELEPHONE LINE, 1744+12.34 P.I. - 1203'77" RT., 1744+64.21 BEGIN BORE, 1745+30.43 EXISTING FENCE, 1745+92.57 SECTION LINE, 1746+98.52 END BORE & OVERHEAD POWER LINES, 1748+57.76 P.I. - 532'55" L.I.



LEGEND

—	PROPERTY LINE	—	BARBED WIRE FENCE	—	EROSION/SEDIMENT CONTROL BMP
- - -	SECTION LINE	—	FIBER OPTIC COM. LINE	—	AVOIDANCE AREA
- - -	EASEMENT LINE	—	RAILROAD	—	WETLAND EASEMENT
- - -	PIPELINE CENTERLINE	—	OVERHEAD ELECTRIC	—	TEST LEAD
—	WATER LINE	—	UTILITY POLE	—	VALVE SETTING
—	FOREIGN PIPELINE	—	PROPOSED BORE		
—	EXISTING ROAD	—	MARKER POST		
—	UNDERGROUND COM. LINE				

MATERIAL SUMMARY

MK. NO.	QTY.	DESCRIPTION
1	4245'	16" OD, 0.281" W.T. API 5L X70, 13-15 MIL FBE
2	976'	16" OD, 0.344" W.T. API 5L X70, 14-16 MIL FBE, 30-35 MIL ARO
T1	1	TYPE-1

REFERENCE DRAWINGS

DWG. NO.	DESCRIPTION	NO.	DATE

REVISIONS

NO.	DATE	DESCRIPTION

SCALE: 1" = 400'

DRAWN BY: A. ROMANN
DATE: 11/12/2015
CHECKED BY: D. DIONNE
APPROVED BY: S. BESMER
KLJ JOB NUMBER: 1715137
REVISION: SHEET: 41

BOE (Bakken Oil Express) | **BAKKEN OIL EXPRESS PIPELINE**

KLJ (Keller & Keller)

BOE PIPELINE PHASE I
SECTIONS 23, 26 & 27, T140N, R97W
STARK COUNTY, NORTH DAKOTA

4585 Coleman Street
Bismarck, ND 58503
© KLJ 2015