

REV.	DATE	ISSUED FOR CONSTRUCTION	NJT	JDJ	KVP	S&L
0	06/22/16	ISSUED FOR CONSTRUCTION				
		REVISIONS AND RECORD OF ISSUE	DRWN	REV'D	APPR	COMP

CABLE DATA:

- CONDUCTOR: 795 KCMIL ACSR "DRAKE" DISPLAYED: 212' "FINAL" CONDITION DESIGN TENSION PER CONDUCTOR: SEE STRINGING SAGS AND TENSIONS CHARTS
- SHIELD WIRE: SFPOC/SFSJ-J-4388R2 OPGW DISPLAYED: 60' "FINAL" CONDITION DESIGN TENSION PER SHIELD WIRE: SEE STRINGING SAGS AND TENSIONS CHARTS
- SHIELD WIRE: 3/8 7-STRAND EHS DISPLAYED: 60' "FINAL" CONDITION DESIGN TENSION PER SHIELD WIRE: SEE STRINGING SAGS AND TENSIONS CHARTS

LEGEND:

- ANCHOR
- UTILITY LINES
- ENVIRONMENTAL AREA
- EASEMENT/PROPERTY SURVEYED LINES
- WIRE DIST/ TRANS. CROSSING

NOTES:

- COORDINATES IN STRUCTURE LABEL ARE X (EASTING) AND Y (NORTHING) PER STATE PLANE NAD83 NORTH DAKOTA SOUTH (3302) U.S. SURVEY FEET
- GROUND CLEARANCE UNDER 212' MAINTAINED IS 25.7 FT. PER NESC REQUIREMENT AT 230KV + 3 FT. BUFFER
- FOR CONDUCTOR DAMPER AND OPGW DAMPER/DIVERTER DETAILS SEE DRAWINGS 13139-028-T1-0301 THROUGH 0303
- CONTRACTOR/INSTALLER SHALL TAKE ALL APPROPRIATE PRECAUTIONS TO ENSURE THE SAFETY OF ALL PEOPLE LOCATED ON THE WORK SITE, INCLUDING CONTRACTOR'S/INSTALLER'S PERSONNEL (OR THAT OF ITS SUB-CONTRACTOR(S)) PERFORMING THE WORK
- TREE REMOVAL AND CLEARING SHALL BE PERFORMED PER PROJECT CONSTRUCTION SPECIFICATION
- CONTRACTOR SHALL PERFORM WORK WITHIN OWNER PROVIDED EASEMENT.

REGISTERED PROFESSIONAL ENGINEER
KUNHAL VINAY PARIKH
PE-10449
DATE 6.23.16

Sargent & Lundy
55 EAST MONROE ST., CHICAGO, IL

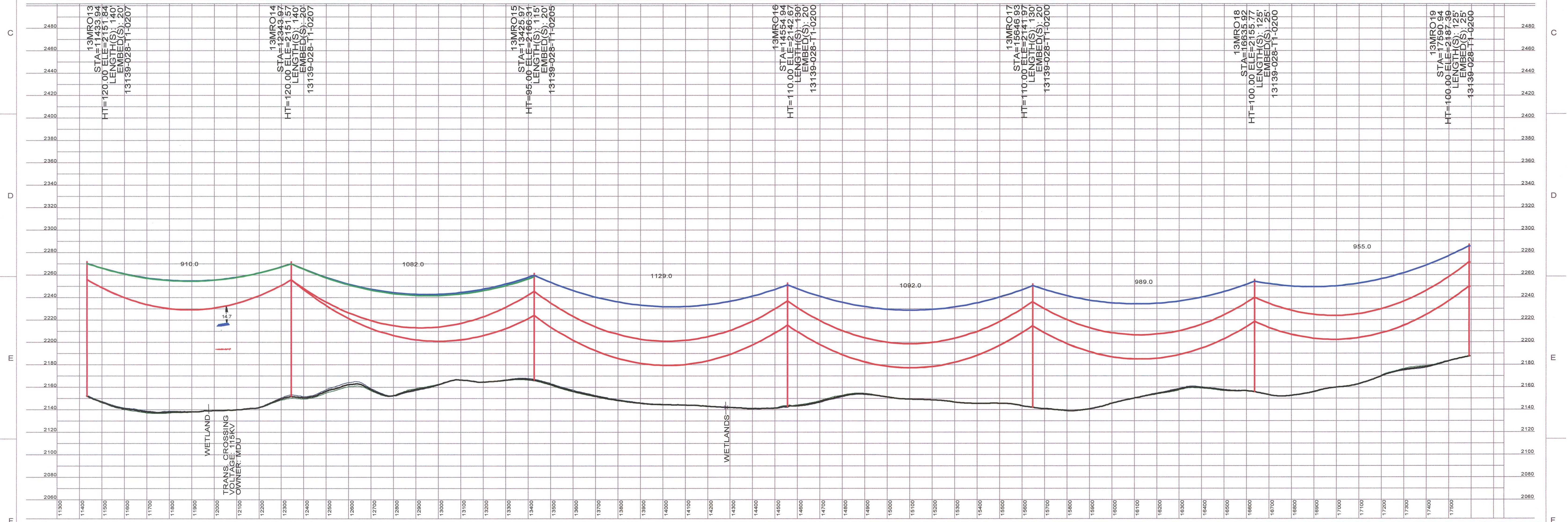
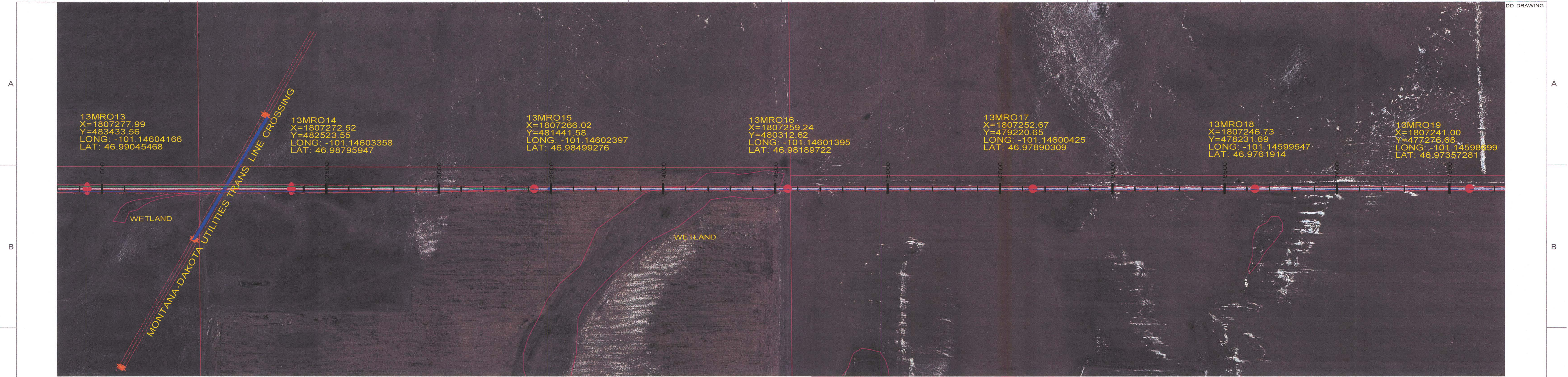
ANY MODIFICATION OR ADDITION TO THIS DRAWING BY ANY ORGANIZATION OTHER THAN SARGENT & LUNDY IS NOT THE RESPONSIBILITY OF SARGENT & LUNDY

PREP: NJT CHKD: JDJ
APPD: KVP DATE: S&L

NEXTERA ENERGY RESOURCES

NEXTERA ENERGY RESOURCES, LLC
OLIVER WIND III, LLC
PLAN & PROFILES

13139-028-T1-0101



REV	DATE	REVISIONS AND RECORD OF ISSUE	DRWN	REV'D	APPR	COMP
0	06/22/16	ISSUED FOR CONSTRUCTION	NJT	JDJ	KVP	S&L

CABLE DATA:

- CONDUCTOR: 795 KCMIL ACSR "DRAKE" DISPLAYED: 212' "FINAL" CONDITION DESIGN TENSION PER CONDUCTOR: SEE STRINGING SAGS AND TENSIONS CHARTS
- SHIELD WIRE: SFPOC/SFSJ-J-4388R2 OPGW DISPLAYED: 60' "FINAL" CONDITION DESIGN TENSION PER CONDUCTOR: SEE STRINGING SAGS AND TENSIONS CHARTS
- SHIELD WIRE: 3/8 7-STRAND EHS DISPLAYED: 60' "FINAL" CONDITION DESIGN TENSION PER SHIELD WIRE: SEE STRINGING SAGS AND TENSIONS CHARTS

LEGEND:

- ANCHOR
- UTILITY LINES
- ENVIRONMENTAL AREA
- EASEMENT/ PROPERTY SURVEYED LINES
- WIRE DIST/ TRANS. CROSSING

NOTES:

- COORDINATES IN STRUCTURE LABEL ARE X (EASTING) AND Y (NORTHING) PER STATE PLANE NAD83 NORTH DAKOTA SOUTH (3302) U.S. SURVEY FEET
- GROUND CLEARANCE UNDER 212' F MAINTAINED IS 25.7 FT. PER NESC REQUIREMENT AT 230KV + 3 FT. BUFFER
- FOR CONDUCTOR DAMPER AND OPGW DAMPER/DIVERTER DETAILS SEE DRAWINGS 13139-028-T1-0301 THROUGH 0303.
- CONTRACTOR/INSTALLER SHALL TAKE ALL APPROPRIATE PRECAUTIONS TO ENSURE THE SAFETY OF ALL PEOPLE LOCATED ON THE WORK SITE, INCLUDING CONTRACTOR'S/INSTALLER'S PERSONNEL (OR THAT OF ITS SUB-CONTRACTOR(S)) PERFORMING THE WORK
- TREE REMOVAL AND CLEARING SHALL BE PERFORMED PER PROJECT CONSTRUCTION SPECIFICATION
- CONTRACTOR SHALL PERFORM WORK WITHIN OWNER PROVIDED EASEMENT.

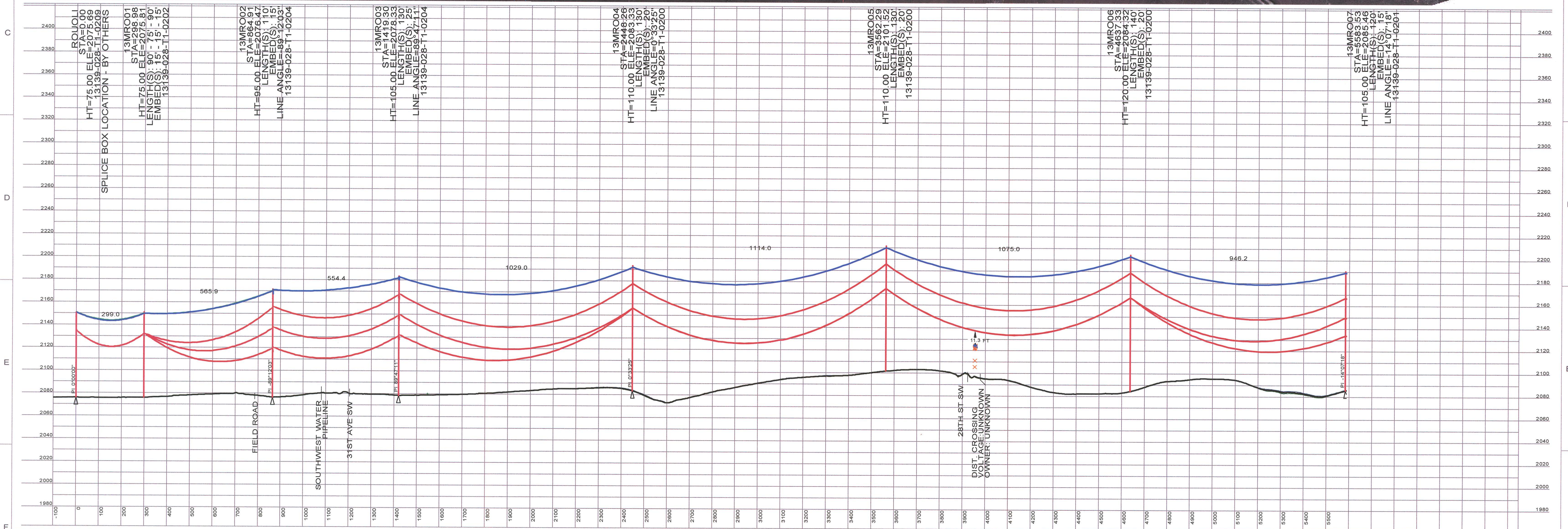
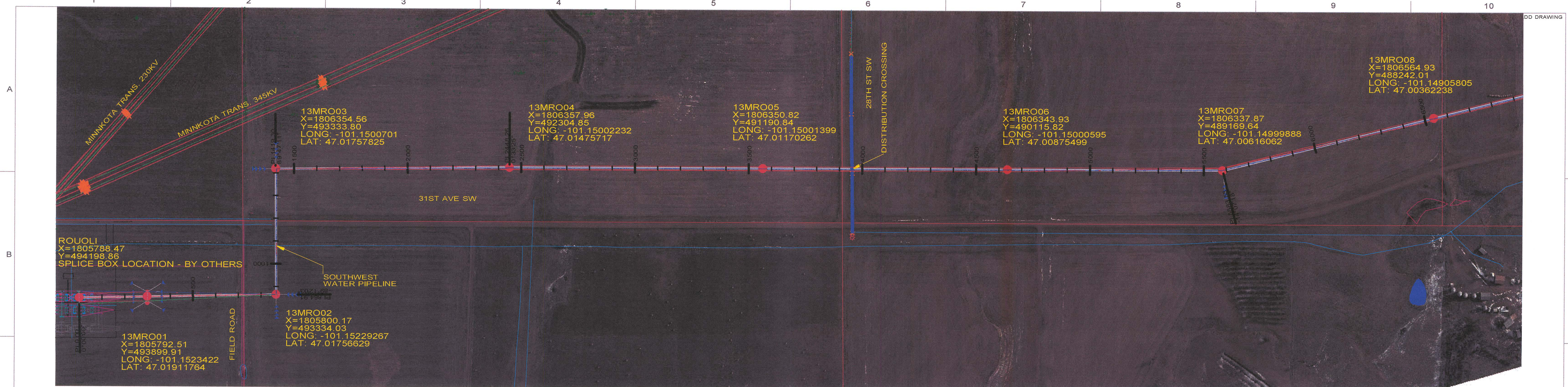
REGISTERED PROFESSIONAL ENGINEER
 KUNHAL VINAY PARIKH
 PE-10449
 DATE 6.23.16

Sargent & Lundy
 55 EAST MONROE ST., CHICAGO, IL

NEXTERA ENERGY RESOURCES

NEXTERA ENERGY RESOURCES, LLC
OLIVER WIND III, LLC
PLAN & PROFILES
 13139-028-T1-0102

PREP: NJT	CHKD: JDJ
APPD: KVP	DATE: S&L



REV.	DATE	ISSUED FOR CONSTRUCTION	DRWN	REV'D	APPR	COMP
0	06/22/16	ISSUED FOR CONSTRUCTION	NJT	JDJ	KVP	S&L

CABLE DATA:

- CONDUCTOR: 795 KCMIL ACSR "DRAKE" DISPLAYED: 212' "FINAL" CONDITION DESIGN TENSION PER CONDUCTOR. SEE STRINGING SAGS AND TENSIONS CHARTS
- SHIELD WIRE: SFOC/SFSJ-J-4388R2 OPGW DISPLAYED: 60' "FINAL" CONDITION DESIGN TENSION PER SHIELD WIRE. SEE STRINGING SAGS AND TENSIONS CHARTS
- SHIELD WIRE: 3/8 7-STRAND EHS DISPLAYED: 60' "FINAL" CONDITION DESIGN TENSION PER SHIELD WIRE. SEE STRINGING SAGS AND TENSIONS CHARTS

LEGEND:

- ANCHOR
- UTILITY LINES
- ENVIRONMENTAL AREA
- EASEMENT/ PROPERTY SURVEYED LINES
- WIRE DIST/ TRANS. CROSSING

NOTES:

- COORDINATES IN STRUCTURE LABEL ARE X (EASTING) AND Y (NORTHING) PER STATE PLANE NAD83 NORTH DAKOTA SOUTH (3502) U.S. SURVEY FEET
- GROUND CLEARANCE UNDER 212' MAINTAINED IS 25' FT. PER NESC REQUIREMENT AT 230KV + 3 FT. BUFFER
- FOR CONDUCTOR DAMPER AND OPGW DAMPER/DIVERTER DETAILS SEE DRAWINGS 13139-028-T1-0301 THROUGH 0303.
- CONTRACTOR/INSTALLER SHALL TAKE ALL APPROPRIATE PRECAUTIONS TO ENSURE THE SAFETY OF ALL PEOPLE LOCATED ON THE WORK SITE INCLUDING CONTRACTOR'S/INSTALLER'S PERSONNEL (OR THAT OF ITS SUB-CONTRACTOR(S)) PERFORMING THE WORK
- TREE REMOVAL AND CLEARING SHALL BE PERFORMED PER PROJECT CONSTRUCTION SPECIFICATION
- CONTRACTOR SHALL PERFORM WORK WITHIN OWNER PROVIDED EASEMENT.

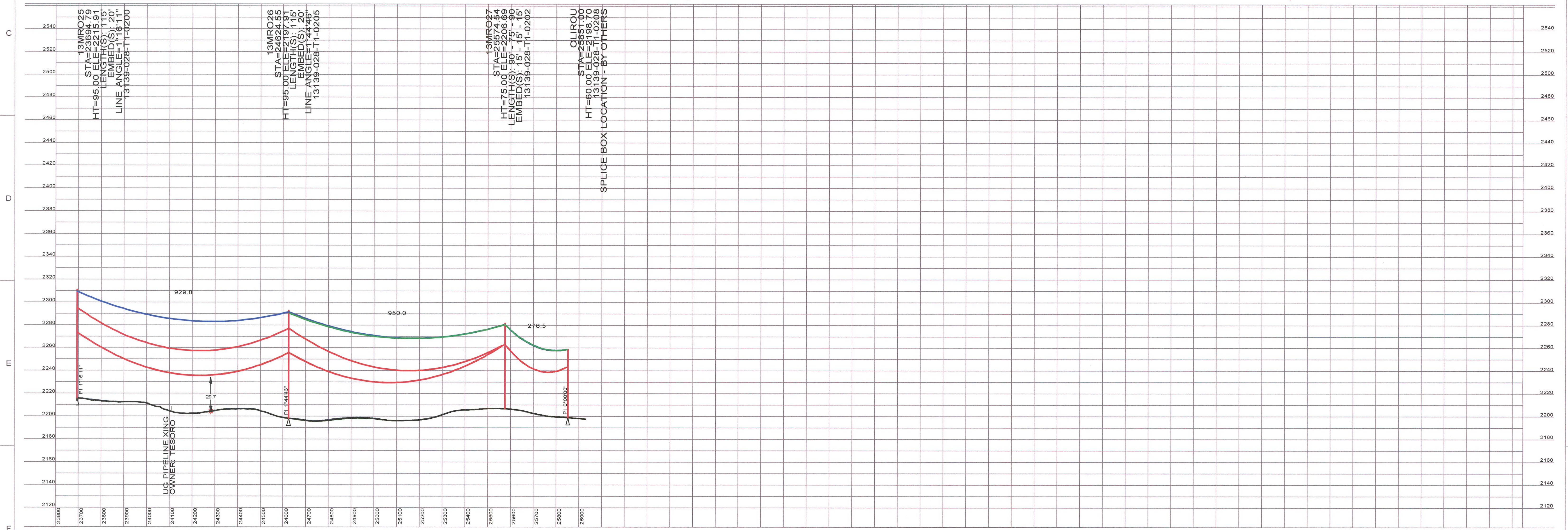
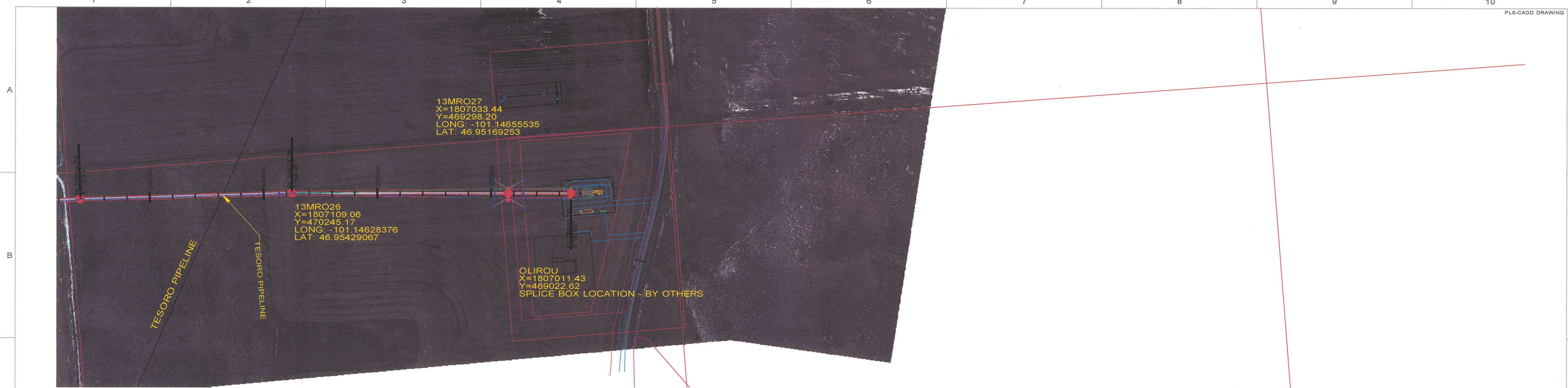
Sargent & Lundy
55 EAST MONROE ST., CHICAGO, IL

ANY MODIFICATION OR ADDITION TO THIS DRAWING BY ANY ORGANIZATION OTHER THAN SARGENT & LUNDY IS NOT THE RESPONSIBILITY OF SARGENT & LUNDY

PREP: NJT CHKD: JDJ
APPD: KVP DATE: S&L

NEXTERA ENERGY RESOURCES

NEXTERA ENERGY RESOURCES, LLC
OLIVER WIND III, LLC
PLAN & PROFILES
13139-028-T1-0100



0	06/22/16	ISSUED FOR CONSTRUCTION	NJT	JDJ	KVP	S&L
REV.	DATE	REVISIONS AND RECORD OF ISSUE	DRWN/REV'D	APPR	COMP	

CABLE DATA:

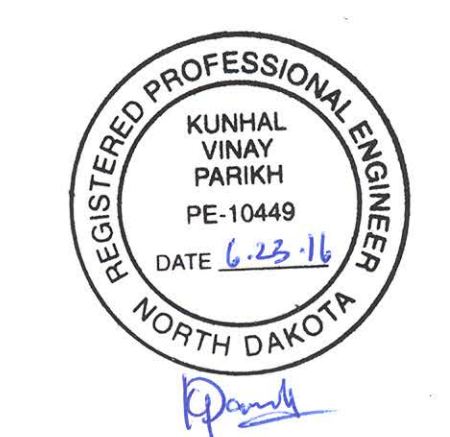
- CONDUCTOR: 795 KCMIL ACSR "DRAKE" DISPLAYED: 212' "FINAL" CONDITION DESIGN TENSION PER CONDUCTOR: SEE STRINGING SAGS AND TENSIONS CHARTS
- SHIELD WIRE: SFPOC/SFSJ-J-4388R2 OPGW DISPLAYED: 60' "FINAL" CONDITION DESIGN TENSION PER CONDUCTOR: SEE STRINGING SAGS AND TENSIONS CHARTS
- SHIELD WIRE: 3/8 7-STRAND EHS DISPLAYED: 80' "FINAL" CONDITION DESIGN TENSION PER CONDUCTOR: SEE STRINGING SAGS AND TENSIONS CHARTS

LEGEND:

- ANCHOR
- UTILITY LINES
- ENVIRONMENTAL AREA
- EASEMENT/ PROPERTY SURVEYED LINES
- WIRE DIST/ TRANS. CROSSING

NOTES:

- COORDINATES IN STRUCTURE LABEL ARE X (EASTING) AND Y (NORTHING) PER STATE PLANE NAD83 NORTH DAKOTA SOUTH (3300) U.S. SURVEY FEET
- GROUND CLEARANCE UNDER 212' MAINTAINED IS 25.7 FT. PER NESC REQUIREMENT AT 230KV + 3 FT. BUFFER
- FOR CONDUCTOR DAMPER AND OPGW DAMPER/DIVERTER DETAILS SEE DRAWINGS 13139-028-T1-0301 THROUGH 0303.
- CONTRACTOR/INSTALLER SHALL TAKE ALL APPROPRIATE PRECAUTIONS TO ENSURE THE SAFETY OF ALL PEOPLE LOCATED ON THE WORK SITE, INCLUDING CONTRACTOR'S/INSTALLER'S PERSONNEL (OR THAT OF ITS SUB-CONTRACTOR(S)) PERFORMING THE WORK.
- TREE REMOVAL AND CLEARING SHALL BE PERFORMED PER PROJECT CONSTRUCTION SPECIFICATION.
- CONTRACTOR SHALL PERFORM WORK WITHIN OWNER PROVIDED EASEMENT.



Sargent & Lundy
55 EAST MONROE ST., CHICAGO, IL

ANY MODIFICATION OR ADDITION TO THIS DRAWING BY ANY ORGANIZATION OTHER THAN SARGENT & LUNDY IS NOT THE RESPONSIBILITY OF SARGENT & LUNDY

PREP: NJT CHKD: JDJ
APPD: KVP DATE: S&L

NEXTERA ENERGY RESOURCES

**NEXTERA ENERGY RESOURCES, LLC
OLIVER WIND III, LLC
PLAN & PROFILES**

13139-028-T1-0104