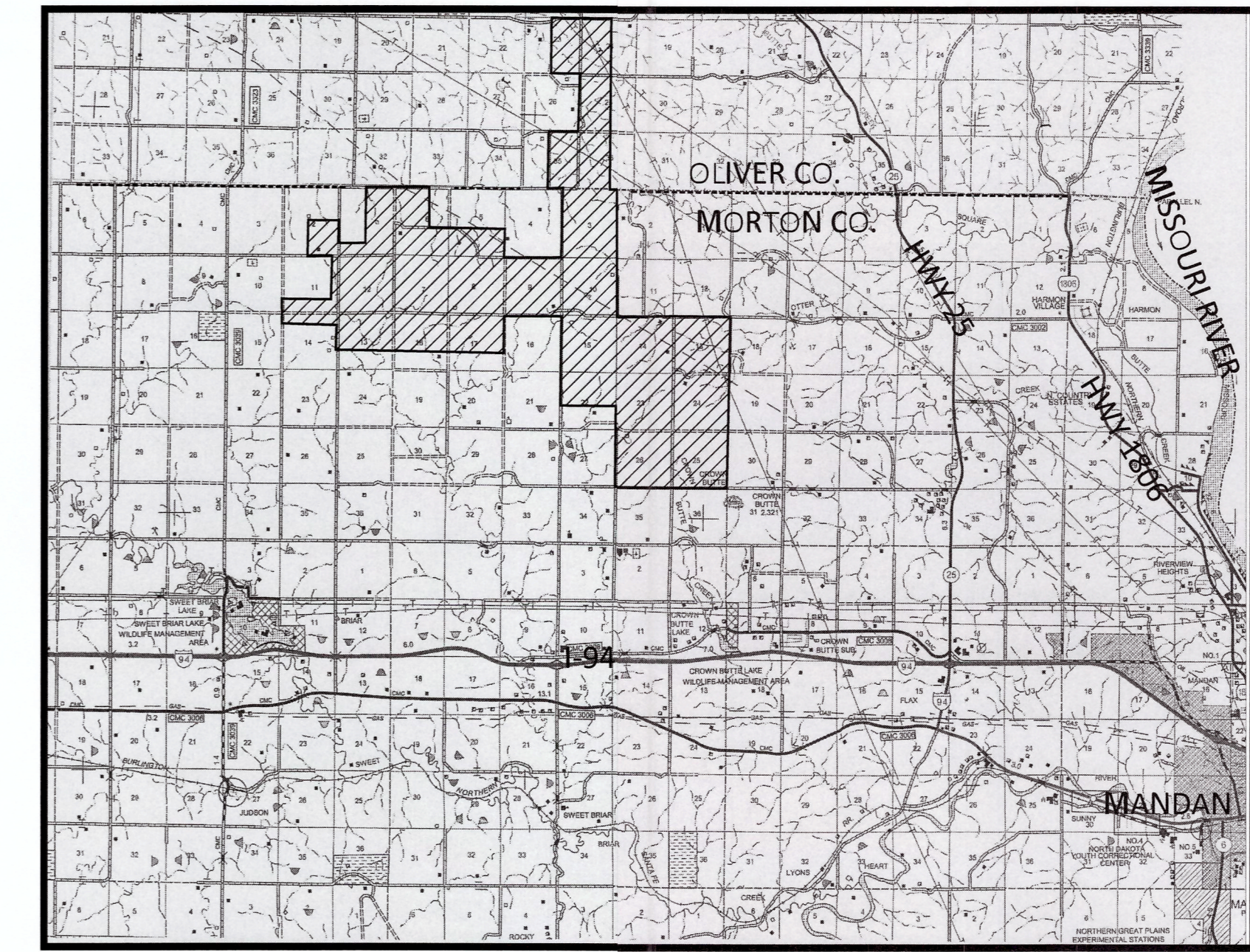
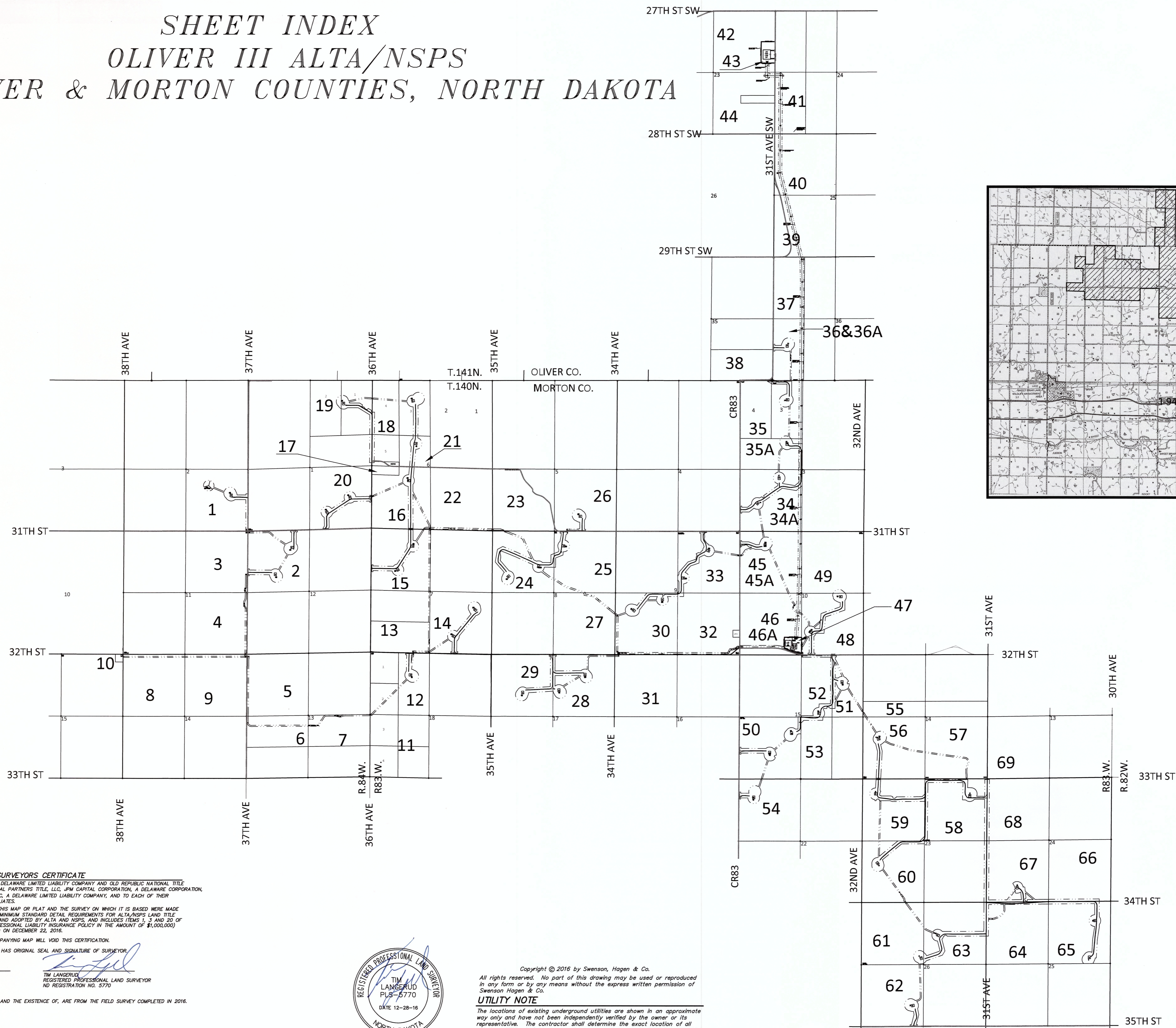


SHEET INDEX

OLIVER III ALTA/NSPS

OLIVER & MORTON COUNTIES, NORTH DAKOTA



DECEMBER 28, 2016
DATE OF FIELD SURVEY DECEMBER 22, 2016

DATUM:
NORTH DAKOTA STATE PLANE
SOUTH ZONE (3302)
NAD 83 (ADJ 98)
INTERNATIONAL FEET
GRID DISTANCE
NAVD 88
THE SURVEY DATA IS ON FILE AT THE
OFFICES OF SWENSON, HAGEN & CO.

SWENSON, HAGEN & COMPANY P.C.
 509 Basin Avenue
 Bismarck, North Dakota 58504
 shagen@swensonhagen.com
 Phone (701) 233-2600
 Fax (701) 233-2606

SURVEYORS CERTIFICATE
 TO OLIVER WIND III, LLC, A DELAWARE LIMITED LIABILITY COMPANY AND OLD REPUBLIC NATIONAL TITLE INSURANCE COMPANY, COMMERCIAL PARTNERS TITLE, LLC, JPM CAPITAL CORPORATION, A DELAWARE CORPORATION, WELLS FARGO WIND HOLDINGS LLC, A DELAWARE LIMITED LIABILITY COMPANY, AND TO EACH OF THEIR SUCCESSORS, ASSIGNS AND AFFILIATES.

THIS IS TO CERTIFY THAT THIS MAP OR PLAT AND THE SURVEY ON WHICH IT IS BASED WERE MADE IN ACCORDANCE WITH THE 2016 MINIMUM STANDARD DETAIL REQUIREMENTS FOR ALTA/NSPS LAND TITLE SURVEYS, JOINTLY ESTABLISHED AND ADOPTED BY ALTA AND NSPS, AND INCLUDES ITEMS 1, 3 AND 20 OF TABLE A THEREOF. WITH A PROFESSIONAL LIABILITY INSURANCE POLICY IN THE AMOUNT OF \$1,000,000 THE FIELD WORK WAS COMPLETED ON DECEMBER 22, 2016.

ANY ALTERATION OF THE ACCOMPANYING MAP WILL VOID THIS CERTIFICATION.
 SURVEY IS VALID ONLY IF PRINT HAS ORIGINAL SEAL AND SIGNATURE OF SURVEYOR.

DATE: DECEMBER 28, 2016

Tim Langerud
 TIM LANGERUD
 REGISTERED PROFESSIONAL LAND SURVEYOR
 ND REGISTRATION NO. 3770



Copyright © 2016 by Swenson, Hagen & Co.
 All rights reserved. No part of this drawing may be used or reproduced in any form or by any means without the express written permission of Swenson Hagen & Co.

UTILITY NOTE
 The locations of existing underground utilities are shown in an approximate way only and have not been independently verified by the owner or its representative. The contractor shall determine the exact location of all existing utilities before commencing work, and agree to be fully responsible for any and all damages which might be occasioned by the contractor's failure to exactly locate and preserve any and all underground utilities.

THE MONUMENTS, THE LOCATION AND THE EXISTENCE OF, ARE FROM THE FIELD SURVEY COMPLETED IN 2016.
 PROJECT ID: 2537-10