

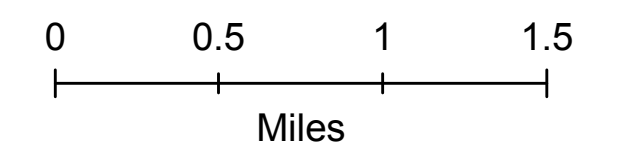
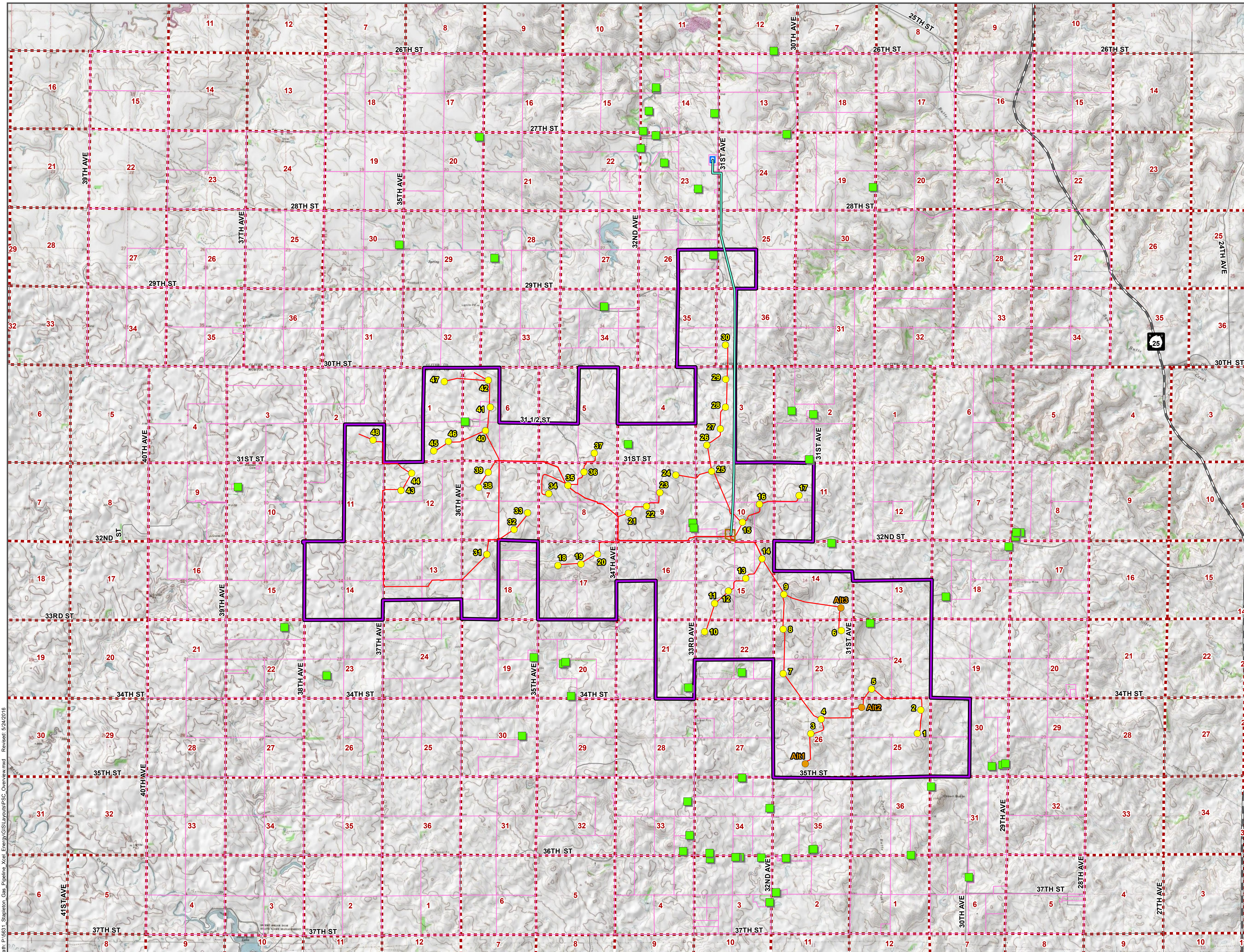
Oliver III Wind Energy Center

Oliver and Morton Counties, ND

Legend

Proposed Project Features

- Proposed Turbine (02/04/16)
- Alternative Turbine (02/04/16)
- Occupied Receptor (04/19/16)
- Transmission Line (02/24/16)
- Collection Line (04/21/16)
- Property Line
- Section Boundary
- Substation
- Proposed Switchyard
- Proposed Project Area (04/21/16)



Scale is 1:37,131 when printed at 22 x 34



Path: P:\651_Station Use Pipeline_Xcel_Energy\GIS\LAYOUTS\PSC_Overview.mxd Revised: 5/24/2016