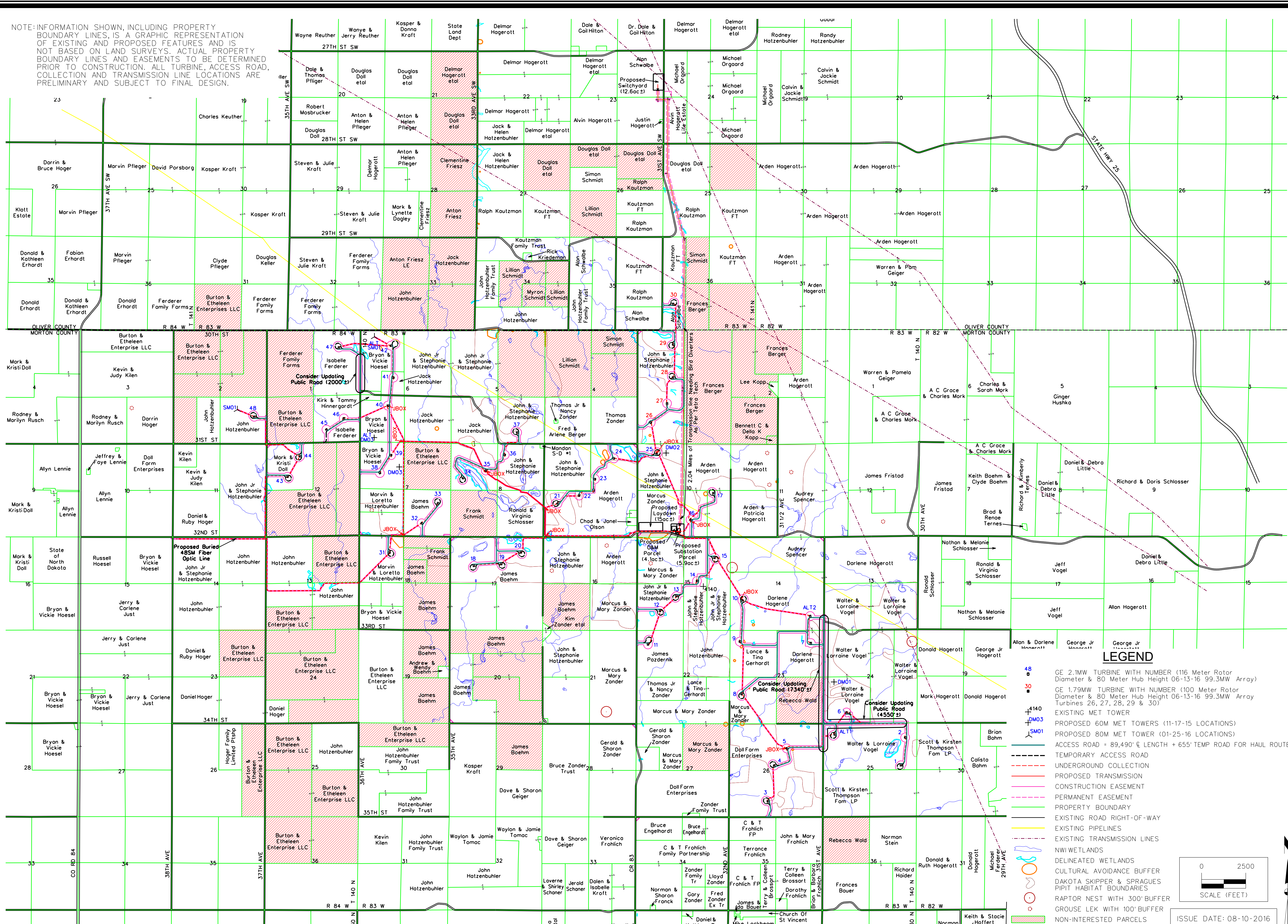


NOTE: INFORMATION SHOWN, INCLUDING PROPERTY BOUNDARY LINES, IS A GRAPHIC REPRESENTATION OF EXISTING AND PROPOSED FEATURES AND IS NOT BASED ON LAND SURVEYS. ACTUAL PROPERTY BOUNDARY LINES AND EASEMENTS TO BE DETERMINED PRIOR TO CONSTRUCTION. ALL TURBINE, ACCESS ROAD, COLLECTION AND TRANSMISSION LINE LOCATIONS ARE PRELIMINARY AND SUBJECT TO FINAL DESIGN.



**LEGEND**

- 48 ○ GE 2.1MW TURBINE WITH NUMBER (116 Meter Rotor Diameter & 80 Meter Hub Height 06-13-16 99.3MW Array)
- 30 ○ GE 1.79MW TURBINE WITH NUMBER (100 Meter Rotor Diameter & 80 Meter Hub Height 06-13-16 99.3MW Array Turbines 26, 27, 28, 29 & 30)
- +140 ○ EXISTING MET TOWER
- DM03 ○ PROPOSED 60M MET TOWERS (11-17-15 LOCATIONS)
- SM01 ○ PROPOSED 80M MET TOWER (01-25-16 LOCATIONS)
- ACCESS ROAD = 89,490' & LENGTH + 655' TEMP ROAD FOR HAUL ROUTE
- TEMPORARY ACCESS ROAD
- UNDERGROUND COLLECTION
- PROPOSED TRANSMISSION
- CONSTRUCTION EASEMENT
- PERMANENT EASEMENT
- PROPERTY BOUNDARY
- EXISTING ROAD RIGHT-OF-WAY
- EXISTING PIPELINES
- EXISTING TRANSMISSION LINES
- NWI WETLANDS
- DELINEATED WETLANDS
- CULTURAL AVOIDANCE BUFFER
- DAKOTA SKIPPER & SPRAGUES PIPIT HABITAT BOUNDARIES
- RAPTOR NEST WITH 300' BUFFER
- GROUSE LEK WITH 100' BUFFER
- NON-INTERESTED PARCELS

0 2500  
SCALE (FEET)

ISSUE DATE: 08-10-2016

**NEXTERA ENERGY - OLIVER WIND III**

**OVERALL SITE PLAN**

**MORTON & OLIVER COUNTIES, NORTH DAKOTA**

**SNYDER & ASSOCIATES**

1751 MADISON AVENUE  
COUNCIL BLUFFS, IOWA 51503  
712-322-3202

1100127

Sheet 1 of 1

1100127

Field Bk: Pg: 03-19-10

Engineer: SCH DW Date: 10/12/16

Checked By: MCG Scale: 1"=2500'

REVISION DATE BY

42 UPDATED ROAD EAST OF T. UPDATED CONSTRUCTION EASEMENTS 8/10/16 DW

41 UPDATED COLLECTION AND UNDERGROUND COLLECTION WITH PROPOSED TRANSMISSION LINES 7/12/16 DW

40 UPDATED COLLECTION WITH PILES 6/27/16 DESIGN THAT WOULD BE ABOVE AT W/06 7/12/16 DW

39 UPDATED 1-LINE WITH SARGENT & LUNDY'S 6/21/16 P.C. DESIGN 8/27/16 DW

MARK REVISION DATE BY

Engineer: SCH DW Date: 10/12/16

Checked By: MCG Scale: 1"=2500'

REVISION DATE BY

42 UPDATED ROAD EAST OF T. UPDATED CONSTRUCTION EASEMENTS 8/10/16 DW

41 UPDATED COLLECTION AND UNDERGROUND COLLECTION WITH PROPOSED TRANSMISSION LINES 7/12/16 DW

40 UPDATED COLLECTION WITH PILES 6/27/16 DESIGN THAT WOULD BE ABOVE AT W/06 7/12/16 DW

39 UPDATED 1-LINE WITH SARGENT & LUNDY'S 6/21/16 P.C. DESIGN 8/27/16 DW

MARK REVISION DATE BY

Engineer: SCH DW Date: 10/12/16

Checked By: MCG Scale: 1"=2500'

REVISION DATE BY