
Plains Terminal North Dakota LLC
Johnsons Corner to Dakota Access Pipeline Project
PU-16-140
Tree and Shrub Mitigation Plan
April 2018
Amended July 2018



E3 ENVIRONMENTAL™
Enhancing Execution with Experience®



PLAINS
ALL AMERICAN
PIPELINE, L.P.

Plains Terminals North Dakota LLC
Tree and Shrub Mitigation Plan
Johnsons Corner to Dakota Access Pipeline, PU-16-140
April 17, 2018
Amended July 19, 2018



TABLE OF CONTENTS

INTRODUCTION 2
TREE AND SHRUB REMOVAL INVENTORY 2
REPLACEMENT PLAN 3

ATTACHMENTS:

- Project Map
- Photo Log of Tree Removal

INTRODUCTION

Plains Terminals North Dakota LLC (Plains) has completed construction of the Johnsons Corner to Dakota Access Pipeline Project (Project). The Project is a crude oil transmission pipeline approximately 3.5 miles in length that transports crude oil from the Plains Johnsons Corner Terminal to the Dakota Access Pipeline Johnsons Corner Terminal Facility. The Project is located on private land in McKenzie County, North Dakota.

The North Dakota Public Service Commission (PSC) issued their Order on Recommended Findings of Fact, Conclusions of Law and Order (Case No. PU-16-140), a Certificate of Corridor Compatibility (Number 191) and a Route Permit (Number 203) on August 17, 2016 for the Project. Included was the PSC's Tree and Shrub Mitigation Specifications. The PSC's Tree and Shrub Mitigation Specifications requires the project proponent to:

1. Provide an inventory of the type, location and number of trees/shrubs removed during construction;
2. Replace removed trees/shrubs at a minimum 2:1 ratio;
3. Inspect (in September) and report annually on tree/shrub survival for a minimum of 3-years after planting; and
4. Achieve a minimum survival rate of 75% after 3-years. If a 75% survival rate is not achieved additional plantings are required with subsequent annual monitoring and reporting for 3-years after planting.

This Tree and Shrub Mitigation Plan (Plan) has been prepared to identify the type, location and number of trees/shrubs removed during construction and to outline Plains' approach for replacement plantings and subsequent monitoring and reporting.

TREE AND SHRUB REMOVAL INVENTORY

E3 Environmental, LLC (E3) completed natural resource survey of the Project and this effort included a tree and shrub inventory of the 250-foot survey corridor. The survey encompassed approximately 100 acres and recorded 88 locations where woody vegetation (i.e., woodlands, shelterbelts, ornamentals or shrub communities) was present. These results were detailed in the Natural Resource Report, which was included as Appendix D of the PSC Consolidated Corridor and Route Application. Plains worked to minimize the removal of woody vegetation during construction and maintained an inventory documenting the location, type and number of trees/shrubs removed that would require replacement per the PSC's Tree and Shrub Mitigation Plan. These results are summarized in Table 1 and the location is depicted on the map

in Appendix A. Photos of the area prior and post-tree removal are also contained in Appendix A.

Table 1 Tree and Shrub Inventory

Tree/Shrub Type	Number Removed	Replacement Quantity*
Chokecherry	12	24

*Utilizes a 2:1 replacement ration.

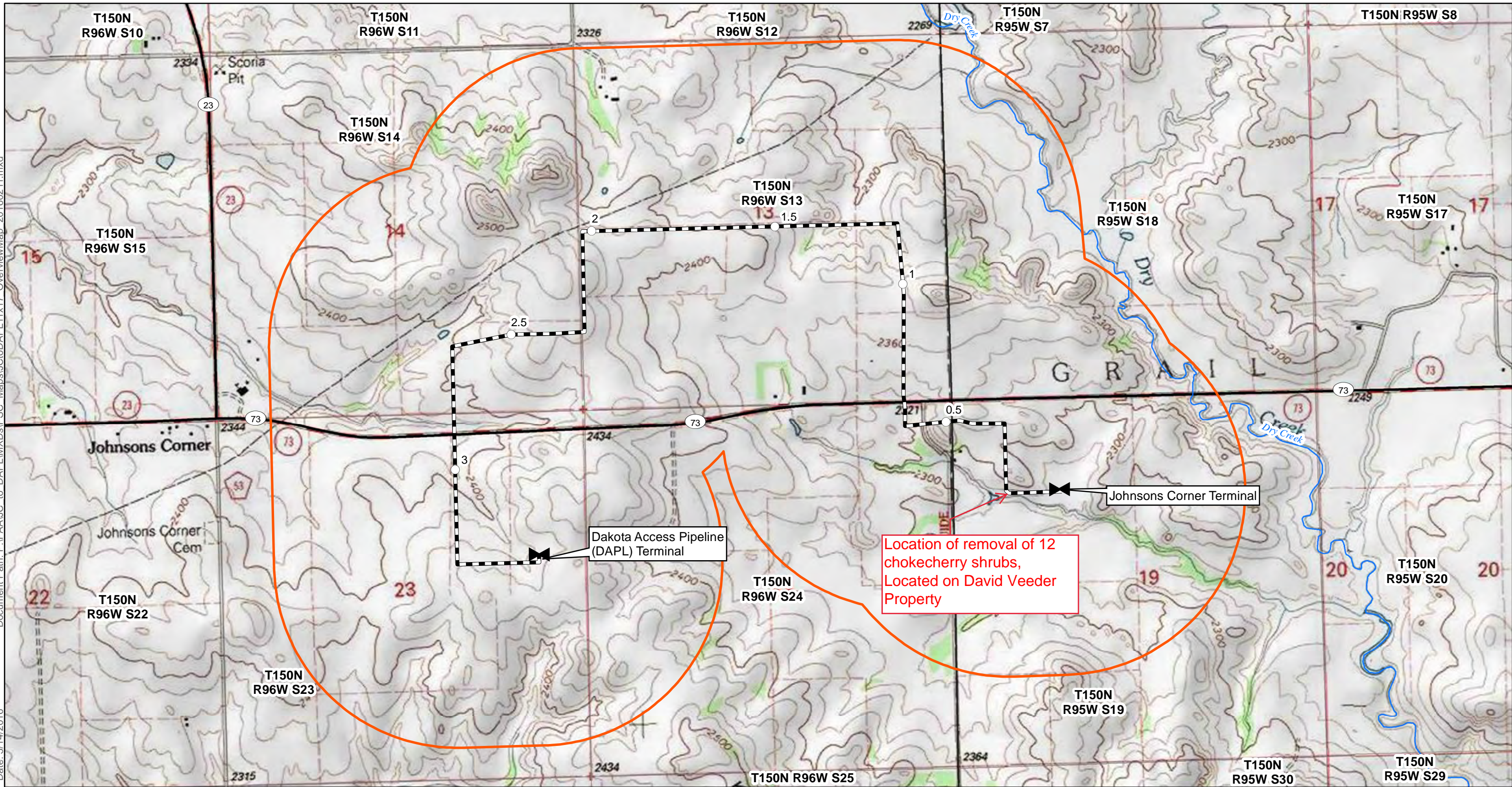
All twelve (12) Chokecherry shrubs removed were from one property.

REPLACEMENT PLAN

A review of the Project was conducted to identify the location(s) where woody vegetation was removed during construction and to quantify, by species, the impacted trees/shrubs. Trees and shrubs were removed from private property. Plains will coordinate with the affected landowner(s) regarding the replacement of tree/shrubs. Following landowner coordination, replacement plantings are anticipated to occur in the summer of 2018. In accordance with the PSC's Tree and Shrub Mitigation Specifications, Plains will record, document and file a record of these efforts with the PSC as stipulated by the Tree and Shrub Mitigation Specifications.

The landowner has accepted the replacement shrubs. The landowner has requested that Plains plant June Berry trees in replace of the Chokeberry shrubs. The replacement plants will be planted in 1 general area near where the chokecherry shrubs were removed.

Document Path: P:\PAAUC to DAP\MapDocs\PSC_Maps\JCToDAPL_11x17_OverviewMap_20160211.mxd
Date: 3/14/2016
Author: LDanielson



- Milepost
- Valves
- Proposed Alignment
- Corridor (1 mile)
- NHD Flowline
- NHD Waterbody

Map not to scale, for environmental review purposes only.

1:15,840

**Plains Terminals
North Dakota LLC**

Johnsons Corner to
Dakota Access Pipeline

Overview Map

McKenzie County, North Dakota

Row of chokecherry bushes in pipeline Right of Way. A dozen meet the criteria for “trees” and qualify for replacement. The elms were already dead, and do not qualify for replacement.



Reclamation of area where the trees were removed.

