

March 15, 2022

Via Hand Delivery & Electronic Mail

Mr. Patrick Fahn
Public Utilities Director
North Dakota Public Service Commission
600 East Boulevard, Dept. 408
Bismarck, ND 58505-0480
pfahn@nd.gov
ndpsc@nd.gov

**In re: Eighty-Eight Terminals North Dakota LLC (f/k/a/ Plains Terminals
North Dakota, LLC)
Response to Notice of Noncompliance
Case Nos. PU-16-140 & PU-20-405
Our File No. 030210-000006**

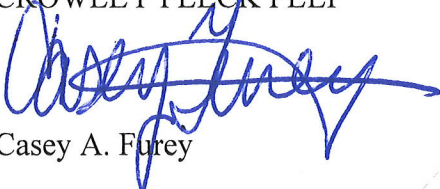
Dear Mr. Fahn:

I am writing on behalf of my client Eighty-Eight Terminals North Dakota LLC, formerly known as Plains Terminals North Dakota, LLC, in response to your March 3, 2022, Notice of Noncompliance filed in Case No. PU-16-140 as Docket No. 82. Enclosed for filing in the above-referenced matter are five hard copies of the requested as-built documents and a USB drive containing GIS of the project.

Please do not hesitate to contact me with any additional questions.

Sincerely,

CROWLEY FLECK PLLP



Casey A. Furey

CAF/lh
Enc.

cc: Wade C. Mann (via email)
Kevin Cook (via email)

83 PU-16-140 Filed 03/15/2022 Pages: 9
Response to 3 March 2022 Notice of Noncompliance
Eighty-Eight Terminals North Dakota LLC
Casey Furey, Crowley Fleck, PLLP

File Name: 19045-D-PP-001

OWNER: FT.MCKENZIE COUNTY, NORTH DAKOTA

STATIONING

0+00 - BEGIN PIPE ROUTE
 0+08 - PI. 20'20" LT.
 0+15 - PI. 23'54" LT.
 0+31 - PI. 23'32" RT.
 0+37 - PI. 40'02" RT.
 1+31 - 0.5' BURIED TELEPHONE LINE XING
 1+45 - PI. 05'11"32" LT.
 1+52 - PI. 34'52" RT.
 1+53 - PI. 25'38" RT.

9+34 - PI. 21'01" RT.
 9+37 - PI. 25'24" RT.
 9+40 - PI. 25'24" RT.

19+45 - PI. 05'26" LT.
 19+48 - PI. 45'20" LT.
 19+51 - PI. 25'01"38" LT.

24+15 - PI. 11'05" RT.
 24+23 - 4" BURIED WATER LINE XING, (CLR. 33.8)

26+07 - PI. 05'29" LT.
 26+35 - OH POWER LINE, (CLR. 25.2)
 26+47 - OH POWER LINE, (CLR. 25.2)
 26+49 - 4" OH POWER LINE, (CLR. 25.2)

27+74 - 2" BURIED WATER LINE XING, (CLR. 38)

30+82 - EDGE OF CALICHE ROAD
 30+83 - CENTER OF CALICHE ROAD
 31+04 - EDGE OF CALICHE ROAD

33+57 - PI. 08'47" RT.
 33+57 - PI. 08'30" RT.
 33+58 - PI. 09'06" LT.
 33+67 - PI. 41'27" RT.
 33+70 - PI. 21'02"34" RT.
 34+25 - BURIED WATER LINE XING
 34+32 - KINDER MORGAN BURIED GAS PIPELINE XING

LEGEND:

- CHECK VALVE
- VALVE
- VALVE FUNCTION
- FLANGE
- TEE
- TAP
- CASING
- HDD/BORE
- RIVER WEIGHT
- SLEEVE
- COMPOSITE SLEEVE
- POINT OF INFLECTION
- AERIAL MARKER
- LINE MARKER
- AGM MARKER
- MILE POST MARKER
- RECTIFIER
- BOND STATION
- CP TEST POINT
- STA. EQUATION
- FOCUS PIPELINE
- GROUND PROFILE
- PIPE PROFILE
- COUNTY BOUNDARY
- TOWNSHIP & RANGE
- SECTION

PLAINS PIPELINES

- ACTIVE DOT
- REG GATHERING
- REG LOW STRESS CAT 1
- REG LOW STRESS CAT 3
- ACTIVE NON-JURIS
- IDLED
- INACTIVE
- RETIRED
- ABANDONED

PLAINS FACILITIES

- PIPE
- TRUCK
- LPG
- NATURAL GAS



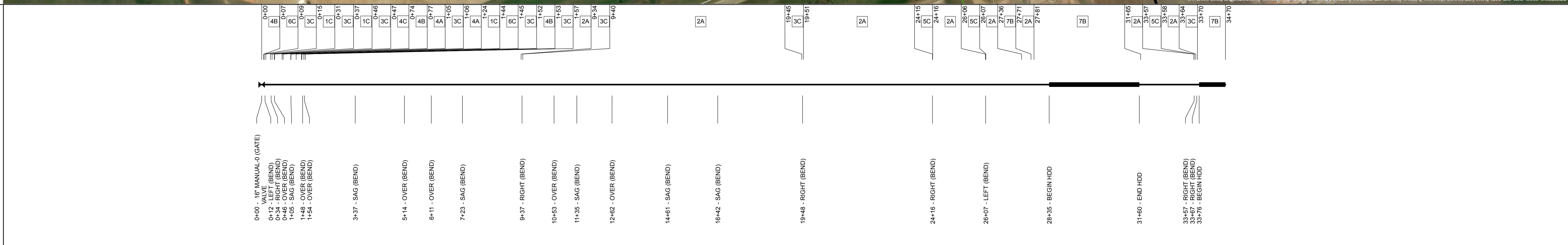
GENERAL NOTES:

- THIS DRAWING HAS BEEN PREPARED FROM SOURCES CONSIDERED TO BE RELIABLE. FIELD VERIFICATION OF THE PIPELINE ASSETS SHOWN HEREON SHOULD BE PERFORMED PRIOR TO STARTING EXCAVATION OR ANY OTHER WORK ON OR AROUND THE PIPELINE.
- PROFILE BASED ON U.S.G.S. DIGITAL ELEVATION MODEL, 10 METER GRID RESOLUTION, UNLESS OTHERWISE SPECIFIED.
- DISTANCES AND DIMENSIONS SHOWN HEREON ARE GRID IN U.S. SURVEY FEET, BASED ON: NAD 1983 UTM Zone 15N FootUS

REFERENCE DRAWINGS:

MATERIAL LIST:

TYPE	DESCRIPTION	QTY
BEND	OVER	7
BEND	LEFT	2
BEND	SAG	6
BEND	RIGHT	6
BORE		1
CP TEST STATION	CAD	1
FLANGE	RFNECK	3
HDD		1
TAP	THREAD-O-LET	2
TEE	EXTRUDED	1
VALVE	GATE	1



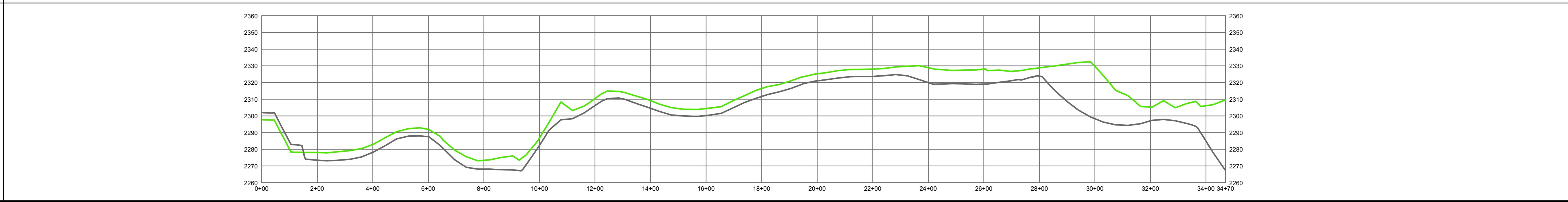
INDEXED PIPE DATA:

INDEX	O.D.	W.T.	SEAM	GRADE	INSTALL	LENGTH
1	16	0.25	ERW - HF	X-52	11/1/2017	44.2
2	16	0.312	ERW - HF	X-60	11/1/2017	2,773.5
3	16	0.312	SMLS	Y-52	11/1/2017	45.0
4	16	0.375	ERW - HF	X-52	11/1/2017	83.8
5	16	0.375	SMLS	Y-52	11/1/2017	2.7
6	16	0.5	ERW - HF	F-52	11/1/2017	2.4
7	16	0.5	ERW - HF	X-52	11/1/2017	518.4

INDEX	TYPE	APPLIED	LENGTH
A	FBE		2,819.2
B	FBE/ARO		529.8
C	PAINT		121.0

REVISION

NO.	DATE	BY	REVISION
0	11/14/2018	LQT	ISSUED FOR OPERATIONS



PLAINS ALL AMERICAN PIPELINE, L.P.

DIVISION: **ROCKY MOUNTAIN PL DIVISION**

BELFIELD PL DISTRICT, ND

LINE NAME: **JOHNSONS CORNER TO DAPL 16"**
0+00 TO 34+70

OPERATING STATUS: **AC** REG AGENCY: **DOT** COMMODITY: **CRUDE OIL**

STATIONING REFERENCE: **SURVEY** GRAPHIC SCALE: **1 in = 200 ft** HORIZONTAL SCALE: **STATIC**

ROUTE ID: **17922** SHEET NUM: **001**

OWNER
STATIONING
ALIGNMENT
PIPE DATA
PROFILE

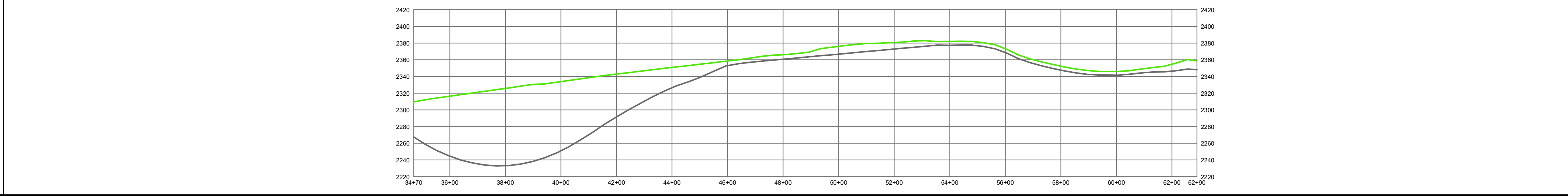
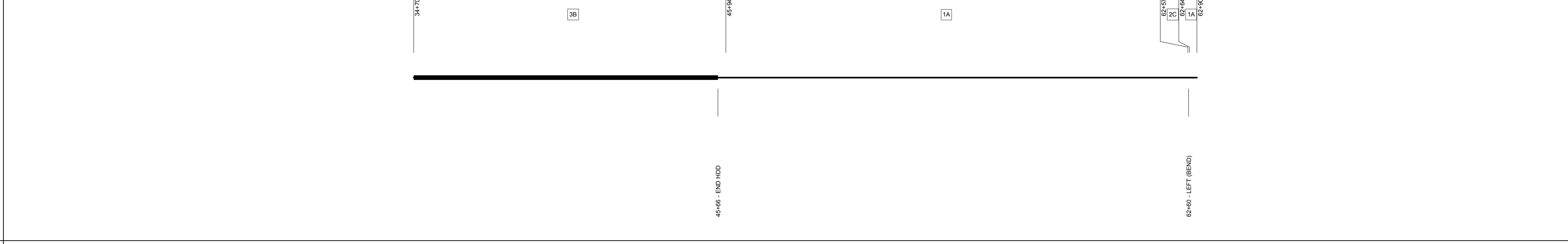
34+70 34+70 34+70

FT.MCKENZIE COUNTY, NORTH DAKOTA

34+88 - TARGA BURIED GAS PIPELINE XING
35+10 - TARGA BURIED GAS PIPELINE XING
35+62 - BURIED ELECTRIC LINE XING
36+06 - BURIED ELECTRIC LINE XING
36+90 - EDGE OF ASPHALT ROAD
37+03 - CENTER OF ASPHALT ROAD
37+17 - EDGE OF ASPHALT ROAD
37+98 - 0.5' BURIED TELEPHONE LINE XING
38+27 - PIPELINE XING
38+42 - PIPELINE XING

56+87 - BEGIN ROCK SHIELD
57+15 - END ROCK SHIELD
57+17 - BEGIN ROCK SHIELD

61+32 - TARGA 10" BURIED GAS PIPELINE XING, (CLR. 79.2)
62+01 - PHILLIPS 66 15" BURIED GAS PIPELINE XING,
62+34 - HESS 15" BURIED GAS PIPELINE XING, (CLR. 28.8)
62+34 - HESS 4" BURIED FIBER OPTIC LINE XING, (CLR. 64)
62+57 - PI. 17"X432 LT.
62+60 - PI. 47"X641 LT.
62+64 - PI. 28"X346 LT.



LEGEND:

- CHECK VALVE
- VALVE
- VALVE FUNCTION
- FLANGE
- TEE
- TAP
- CASING
- HDD/BORE
- RIVER WEIGHT
- SLEEVE
- COMPOSITE SLEEVE
- POINT OF INFLECTION
- AERIAL MARKER
- LINE MARKER
- AGM MARKER
- MILE POST MARKER
- RECTIFIER
- BOND STATION
- CP TEST POINT
- STA. EQUATION
- FOCUS PIPELINE
- GROUND PROFILE
- PIPE PROFILE
- COUNTY BOUNDARY
- TOWNSHIP & RANGE
- SECTION

PLAINS PIPELINES

- ACTIVE DOT
- REG GATHERING
- REG LOW STRESS CAT 1
- REG LOW STRESS CAT 3
- ACTIVE NON-JURIS
- IDLED
- INACTIVE
- RETIRED
- ABANDONED

PLAINS FACILITIES

- PIPE
- TRUCK
- LPG
- NATURAL GAS

GENERAL NOTES:

- THIS DRAWING HAS BEEN PREPARED FROM SOURCES CONSIDERED TO BE RELIABLE. FIELD VERIFICATION OF THE PIPELINE ASSETS SHOWN HEREON SHOULD BE PERFORMED PRIOR TO STARTING EXCAVATION OR ANY OTHER WORK ON OR AROUND THE PIPELINE.
- PROFILE BASED ON U.S.G.S. DIGITAL ELEVATION MODEL, 10 METER GRID RESOLUTION, UNLESS OTHERWISE SPECIFIED.
- DISTANCES AND DIMENSIONS SHOWN HEREON ARE GRID IN U.S. SURVEY FEET, BASED ON: NAD 1983 UTM Zone 15N FootUS

REFERENCE DRAWINGS:

SEE SHEET 19045-D-PP-001
SEE SHEET 19045-D-PP-003

MATERIAL LIST:

MATERIAL LIST		
TYPE	DESCRIPTION	QTY
BEND	LEFT	1
CP TEST STATION	CAD	1
HDD		1

INDEXED PIPE DATA:

INDEX	PIPE				
	O.D.	W.T.	SEAM	GRADE	INSTALL
1	16	0.312	ERW - HF	X-60	11/1/2017
2	16	0.312	SMLS	Y-52	11/1/2017
3	16	0.5	ERW - HF	X-52	11/1/2017

INDEX	COATING		
	TYPE	APPLIED	LENGTH
A	FBE		1,689.8
B	FBE/ARO		1,124.1
C	PAINT		6.1

NO.	DATE	BY	REVISION
0	11/14/2018	LQT	ISSUED FOR OPERATIONS

PLAINS ALL AMERICAN PIPELINE, L.P.

DIVISION: **ROCKY MOUNTAIN PL DIVISION**

BELFIELD PL DISTRICT, ND

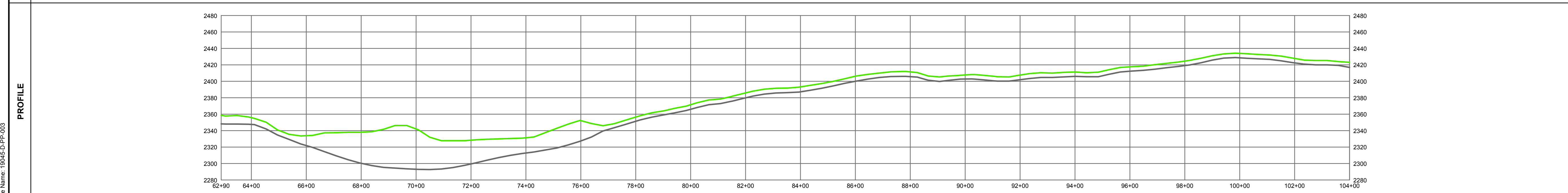
LINE NAME: **JOHNSONS CORNER TO DAPL 16" 34+70 TO 62+90**

OPERATING STATUS: AC	REG AGENCY: DOT	COMMODITY: CRUDE OIL
STATIONING REFERENCE: SURVEY	GRAPHIC SCALE: 1 in = 200 ft	HORIZONTAL SCALE: STATIC
ROUTE ID: 17922	SHEET NUM: 002	

OWNER	PARCEL FT.MCKENZIE COUNTY, NORTH DAKOTA	
STATIONING	62+90	104+00



PIPE DATA	STATIONING	DESCRIPTION
	64+31	OVER (BEND)
	65+42	BEGIN HDD
	76+80	END HDD
	80+66	OVER (BEND)
	81+15	SAG (BEND)
	83+71	SAG (BEND)
	88+82	SAG (BEND)
	91+47	SAG (BEND)
	92+84	OVER (BEND)
	94+75	SAG (BEND)
	95+83	SAG (BEND)
	98+71	SAG (BEND)
	99+66	OVER (BEND)



LEGEND:	
	CHECK VALVE
	VALVE FUNCTION
	FLANGE
	TEE
	TAP
	CASING
	HDD/BORE
	RIVER WEIGHT
	SLEEVE
	COMPOSITE SLEEVE
	POINT OF INFLECTION
	AERIAL MARKER
	LINE MARKER
	AGM MARKER
	MILE POST MARKER
	RECTIFIER
	BOND STATION
	CP TEST POINT
	STA. EQUATION
	FOCUS PIPELINE
	GROUND PROFILE
	PIPE PROFILE
	COUNTY BOUNDARY
	TOWNSHIP & RANGE
	SECTION
PLAINS PIPELINES	
	ACTIVE DOT
	REG GATHERING
	REG LOW STRESS CAT 1
	REG LOW STRESS CAT 3
	ACTIVE NON-JURIS
	IDLED
	INACTIVE
	RETIRED
	ABANDONED
PLAINS FACILITIES	
	PIPE
	TRUCK
	LPG
	NATURAL GAS

GENERAL NOTES:

- THIS DRAWING HAS BEEN PREPARED FROM SOURCES CONSIDERED TO BE RELIABLE. FIELD VERIFICATION OF THE PIPELINE ASSETS SHOWN HEREON SHOULD BE PERFORMED PRIOR TO STARTING EXCAVATION OR ANY OTHER WORK ON OR AROUND THE PIPELINE.
- PROFILE BASED ON U.S.G.S. DIGITAL ELEVATION MODEL, 10 METER GRID RESOLUTION, UNLESS OTHERWISE SPECIFIED.
- DISTANCES AND DIMENSIONS SHOWN HEREON ARE GRID IN U.S. SURVEY FEET, BASED ON: NAD 1983 UTM Zone 15N FootUS

REFERENCE DRAWINGS:

MATERIAL LIST:		
TYPE	DESCRIPTION	QTY
BEND	OVER	4
BEND	SAG	7
HDD		1

INDEXED PIPE DATA:						
INDEX	O.D.	W.T.	SEAM	PIPE GRADE	INSTALL	LENGTH
1	16	0.312	ERW - HF	X-60	11/1/2017	2,889.2
2	16	0.5	ERW - HF	X-52	11/1/2017	1,220.9

COATING			
INDEX	TYPE	APPLIED	LENGTH
A	FBE		2,889.2
B	FBE/ARO		1,220.9

NO.	DATE	BY	REVISION
0	11/14/2018	LQT	ISSUED FOR OPERATIONS

PLAINS ALL AMERICAN PIPELINE, L.P.

DIVISION: **ROCKY MOUNTAIN PL DIVISION**

BELFIELD PL DISTRICT, ND

LINE NAME: **JOHNSONS CORNER TO DAPL 16"**
62+90 TO 104+00

OPERATING STATUS: AC	REG AGENCY: DOT	COMMODITY: CRUDE OIL
STATIONING REFERENCE: SURVEY	GRAPHIC SCALE: 1 in = 200 ft	HORIZONTAL SCALE: STATIC
ROUTE ID: 17922	SHEET/NUM: 003	

OWNER
FT.MCKENZIE COUNTY, NORTH DAKOTA

STATIONING
104+00
104+36
104+01
109+25
109+28
109+32
104+00
104+36
104+01
109+25
109+28
109+32
112+00
113+49
116+17
117+83
120+76
122+04
123+37
123+41
123+44
124+52
125+34
125+44
125+46
134+04
135+11
136+78
141+80

105+00 - OASIS PIPELINE 8" BURIED GAS PIPELINE XING
105+82 - HESS 6" BURIED GAS PIPELINE XING

109+25 - PL. 20'29.46 LT.
109+28 - PL. 45'00.99 RT.
109+32 - PL. 26'19.26 LT.

123+37 - PL. 23'14.18 RT.
123+41 - PL. 45'00.99 RT.
123+44 - PL. 23'14.18 RT.
123+46 - BURIED ELECTRIC LINE XING

124+77 - BURIED GAS PIPELINE XING
125+19 - OASIS PIPELINE 10" BURIED GAS PIPELINE XING

134+04 - PL. 09'43.29 LT.

LEGEND:

- CHECK VALVE
- VALVE
- VALVE FUNCTION
- FLANGE
- TEE
- TAP
- CASING
- HDD/BORE
- RIVER WEIGHT
- SLEEVE
- COMPOSITE SLEEVE
- POINT OF INFLECTION
- AERIAL MARKER
- LINE MARKER
- AGM MARKER
- MILE POST MARKER
- RECTIFIER
- BOND STATION
- CP TEST POINT
- STA. EQUATION
- FOCUS PIPELINE
- GROUND PROFILE
- PIPE PROFILE
- COUNTY BOUNDARY
- TOWNSHIP & RANGE SECTION
- PLAINS PIPELINES**
 - ACTIVE DOT
 - REG GATHERING
 - REG LOW STRESS CAT 1
 - REG LOW STRESS CAT 3
 - ACTIVE NON-JURIS
 - IDLED
 - INACTIVE
 - RETIRED
 - ABANDONED
- PLAINS FACILITIES**
 - PIPE
 - TRUCK
 - LPG
 - NATURAL GAS



GENERAL NOTES:

- THIS DRAWING HAS BEEN PREPARED FROM SOURCES CONSIDERED TO BE RELIABLE. FIELD VERIFICATION OF THE PIPELINE ASSETS SHOWN HEREON SHOULD BE PERFORMED PRIOR TO STARTING EXCAVATION OR ANY OTHER WORK ON OR AROUND THE PIPELINE.
- PROFILE BASED ON U.S.G.S. DIGITAL ELEVATION MODEL, 10 METER GRID RESOLUTION, UNLESS OTHERWISE SPECIFIED.
- DISTANCES AND DIMENSIONS SHOWN HEREON ARE GRID IN U.S. SURVEY FEET, BASED ON: NAD 1983 UTM Zone 15N FootUS

REFERENCE DRAWINGS:

MATERIAL LIST:

MATERIAL LIST		
TYPE	DESCRIPTION	QTY
BEND	OVER	6
BEND	LEFT	2
BEND	SAG	5
BEND	RIGHT	1
BORE		2
CP TEST STATION	CAD	1

PIPE DATA

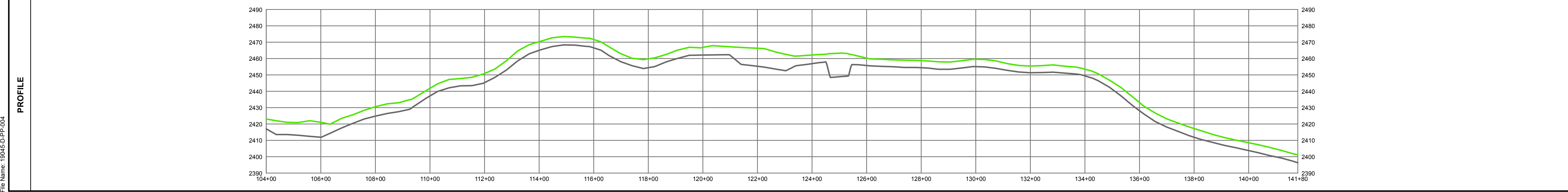
STATION	DESCRIPTION
104+61	BEGIN HDD
106+37	END HDD
109+28	LEFT (BEND)
110+38	OVER (BEND)
112+04	SAG (BEND)
113+49	OVER (BEND)
116+17	OVER (BEND)
117+83	SAG (BEND)
120+76	BEGIN HDD
122+04	END HDD
123+41	RIGHT (BEND)
124+52	OVER (BEND)
124+56	SAG (BEND)
125+34	SAG (BEND)
125+44	OVER (BEND)
134+04	LEFT (BEND)
135+11	OVER (BEND)
136+78	SAG (BEND)

INDEXED PIPE DATA:

INDEX	PIPE					
	O.D.	W.T.	SEAM	GRADE	INSTALL	LENGTH
1	16	0.312	ERW - HF	X-60	11/1/2017	3,372.1
2	16	0.312	SMLS	Y-52	11/1/2017	12.1
3	16	0.375	SMLS	Y-52	11/1/2017	3.6
4	16	0.5	ERW - HF	X-52	11/1/2017	392.2

INDEX	COATING		
	TYPE	APPLIED	LENGTH
A	FBE		3,372.1
B	FBE/ARO		392.2
C	PAINT		15.8

NO.	DATE	BY	REVISION
0	11/14/2018	LQT	ISSUED FOR OPERATIONS



PLAINS ALL AMERICAN PIPELINE, L.P.

DIVISION: **ROCKY MOUNTAIN PL DIVISION**

BELFIELD PL DISTRICT, ND

LINE NAME: **JOHNSONS CORNER TO DAPL 16" 104+00 TO 141+80**

OPERATING STATUS: AC	REG AGENCY: DOT	COMMODITY: CRUDE OIL
STATIONING REFERENCE: SURVEY	GRAPHIC SCALE: 1 in = 200 ft	HORIZONTAL SCALE: STATIC
ROUTE ID: 17922	SHEET NUMBER: 004	

OWNER
STATIONING
ALIGNMENT
PIPE DATA
PROFILE

141+80
142+66 - PI. 18" 11322 LT.
142+68 - PI. 27" 5078 LT.
142+71 - PI. 27" 5078 LT.
142+88 - 10" BURIED GAS PIPELINE XING. (CLR. 27.6)

151+26 - 0.5" BURIED TELEPHONE LINE XING. (CLR. 40.6)
152+00 - BURIED FIBER OPTIC LINE XING

153+79 - ONEK BURIED GAS PIPELINE XING
154+26 - BURIED FIBER OPTIC LINE XING

155+35 - EDGE OF ASPHALT ROAD
155+48 - CENTER OF ASPHALT ROAD
155+60 - EDGE OF ASPHALT ROAD
156+35 - BURIED FIBER OPTIC LINE XING

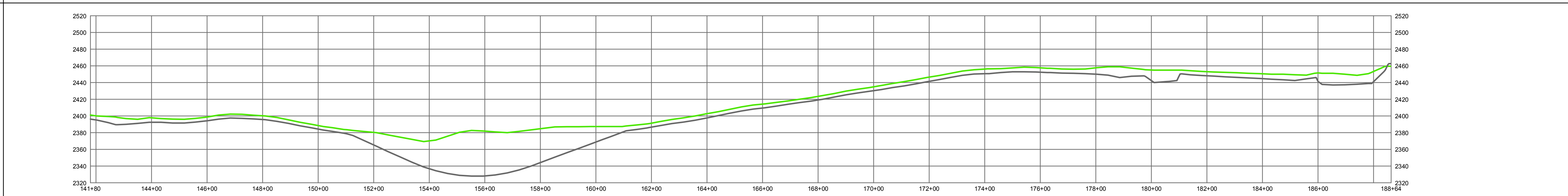
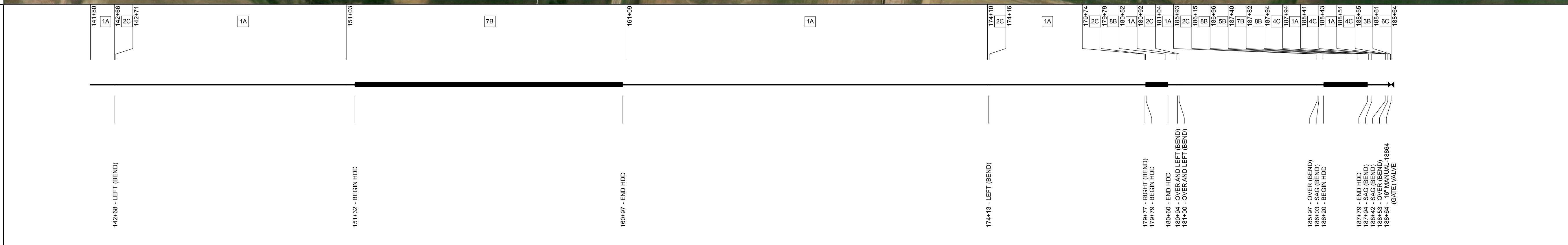
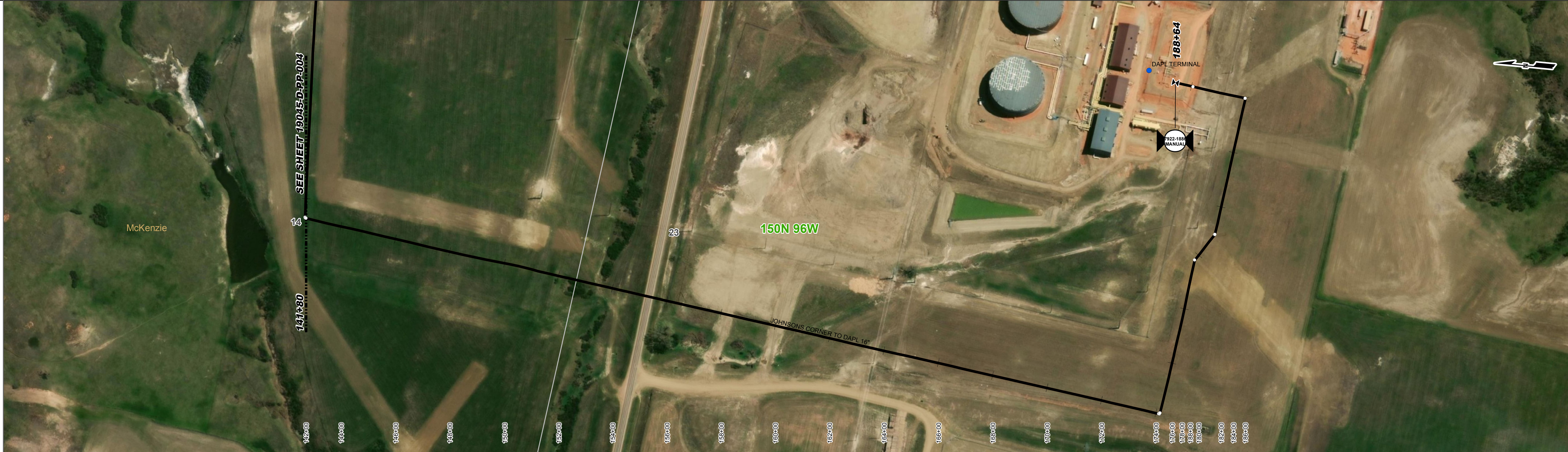
174+10 - PI. 23" 2650 LT.
174+13 - CONCRETE
174+16 - PI. 22" 1707 LT.

179+77 - PI. 25" 5200 RT.
180+91 - CONCRETE
180+93 - CONCRETE
180+97 - PI. 10" 2813 LT.
180+97 - PI. 10" 2813 LT.

185+97 - PI. 32" 1206 LT.
186+00 - PI. 44" 5927 LT.
186+04 - CONCRETE
186+08 - CONCRETE

187+79 - PIPELINE XING
187+84 - PI. 13" 1803 RT.
187+84 - PI. 13" 1803 RT.
188+64 - END PIPE ROUTE

PARCEL
FT.MCKENZIE COUNTY, NORTH
DAKOTA



LEGEND:

- CHECK VALVE
- VALVE
- VALVE FUNCTION
- FLANGE
- TEE
- TAP
- CASING
- HDD/BORE
- RIVER WEIGHT
- SLEEVE
- COMPOSITE SLEEVE
- POINT OF INFLECTION
- AERIAL MARKER
- LINE MARKER
- AGM MARKER
- MILE POST MARKER
- RECTIFIER
- BOND STATION
- CP TEST POINT
- STA. EQUATION
- FOCUS PIPELINE
- GROUND PROFILE
- PIPE PROFILE
- COUNTY BOUNDARY
- TOWNSHIP & RANGE
- SECTION

PLAINS PIPELINES

- ACTIVE DOT
- REG GATHERING
- REG LOW STRESS CAT 1
- REG LOW STRESS CAT 3
- ACTIVE NON-JURIS
- IDLED
- INACTIVE
- RETIRED
- ABANDONED

PLAINS FACILITIES

- PIPE
- TRUCK
- LPG
- NATURAL GAS

GENERAL NOTES:

- THIS DRAWING HAS BEEN PREPARED FROM SOURCES CONSIDERED TO BE RELIABLE. FIELD VERIFICATION OF THE PIPELINE ASSETS SHOWN HEREON SHOULD BE PERFORMED PRIOR TO STARTING EXCAVATION OR ANY OTHER WORK ON OR AROUND THE PIPELINE.
- PROFILE BASED ON U.S.G.S. DIGITAL ELEVATION MODEL, 10 METER GRID RESOLUTION, UNLESS OTHERWISE SPECIFIED.
- DISTANCES AND DIMENSIONS SHOWN HEREON ARE GRID IN U.S. SURVEY FEET, BASED ON: NAD 1983 UTM Zone 15N FootUS

REFERENCE DRAWINGS:

MATERIAL LIST:

TYPE	DESCRIPTION	QTY
BEND	OVER	2
BEND	OVER AND LEFT	2
BEND	LEFT	2
BEND	SAG	3
BEND	RIGHT	1
BORE		2
CP TEST STATION	CAD	1
FLANGE	RFNECK	1
HDD		1
TEE	EXTRUDED	1
VALVE	GATE	1

INDEXED PIPE DATA:

INDEX	O.D.	W.T.	SEAM	PIPE	GRADE	INSTALL	LENGTH
1	16	0.312	ERW - HF	X-60		11/1/2017	3,362.1
2	16	0.312	SMLS	Y-52		11/1/2017	49.2
3	16	0.375	ERW - HF	X-52		11/1/2017	6.3
4	16	0.375	SMLS	Y-52		11/1/2017	6.1
5	16	0.408	SMLS	X-60		11/1/2017	44.0
6	16	0.5	ERW - HF	F-52		11/1/2017	2.3
7	16	0.5	ERW - HF	X-52		11/1/2017	1,047.1
8	16	0.5	ERW - HF	X-60		11/1/2017	166.7

INDEX	TYPE	APPLIED	LENGTH
A	FBE		3,362.1
B	FBE/ARO		1,284.1
C	PAINT		57.5

NO.	DATE	BY	REVISION
0	11/14/2018	LQT	ISSUED FOR OPERATIONS

PLAINS ALL AMERICAN PIPELINE, L.P.

DIVISION: **ROCKY MOUNTAIN PL DIVISION**

BELFIELD PL DISTRICT, ND

LINE NAME: **JOHNSONS CORNER TO DAPL 16"**
141+80 TO 188+64

OPERATING STATUS: AC	REG AGENCY: DOT	COMMODITY: CRUDE OIL
STATIONING REFERENCE: SURVEY	GRAPHIC SCALE: 1 in = 200 ft	HORIZONTAL SCALE: STATIC
ROUTE ID: 17922	SHEET NUM: 005	

OWNER
STATIONING
ALIGNMENT
PIPE DATA
PROFILE

PARCEL
FT.MCKENZIE COUNTY, NORTH
DAKOTA

0+00 0+30 12+81

0+00 - BEGIN PIPE ROUTE
0+00 - IC LAUNCHER
0+12 - PI. 48' 4" 159 LT.
0+14 - PI. 19' 50" 21 LT.
0+15 - PI. 19' 50" 21 RT.
0+43 - PI. 44' 10" 0 RT.
0+45 - PI. 28' 50" 18 RT.

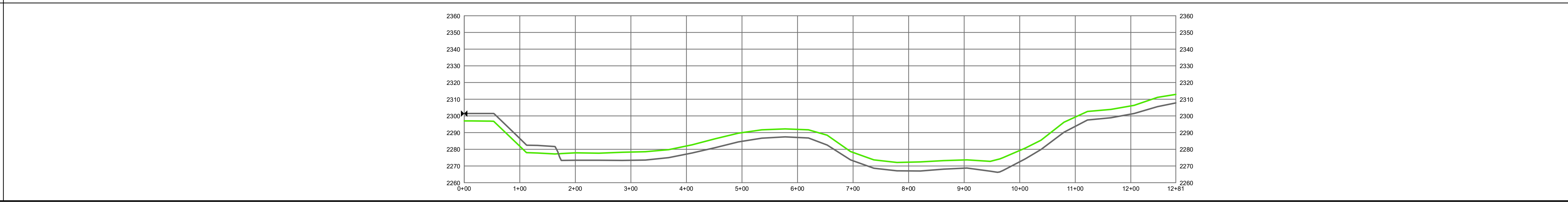
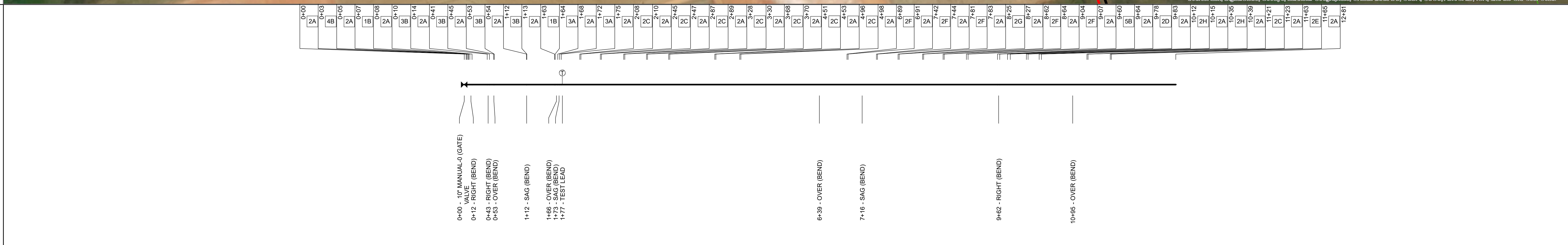
1+66 - PI. 66' 51" 10 RT.

2+08 - BEGIN REPAIR, 2018 DIG 1 RECOAT
2+10 - END REPAIR, 2018 DIG 1 RECOAT
2+45 - BEGIN REPAIR, 2018 DIG 2 RECOAT
2+47 - END REPAIR, 2018 DIG 2 RECOAT
2+87 - BEGIN REPAIR, 2018 DIG 3 RECOAT
2+89 - END REPAIR, 2018 DIG 3 RECOAT
3+28 - BEGIN REPAIR, 2018 DIG 4 RECOAT
3+30 - END REPAIR, 2018 DIG 4 RECOAT
3+68 - BEGIN REPAIR, 2018 DIG 5 RECOAT
3+70 - END REPAIR, 2018 DIG 5 RECOAT

4+51 - BEGIN REPAIR, 2018 DIG 6 RECOAT
4+53 - END REPAIR, 2018 DIG 6 RECOAT
4+98 - BEGIN REPAIR, 2018 DIG 7 RECOAT
4+98 - END REPAIR, 2018 DIG 7 RECOAT

6+89 - BEGIN REPAIR, 2018 DIG 8 RECOAT
6+91 - END REPAIR, 2018 DIG 8 RECOAT
7+42 - BEGIN REPAIR, 2018 DIG 9 RECOAT
7+44 - END REPAIR, 2018 DIG 9 RECOAT
7+81 - BEGIN REPAIR, 2018 DIG 10 RECOAT
7+83 - END REPAIR, 2018 DIG 10 RECOAT
8+25 - BEGIN REPAIR, 2018 DIG 11 RECOAT
8+27 - END REPAIR, 2018 DIG 11 RECOAT
8+69 - BEGIN REPAIR, 2018 DIG 12 RECOAT
8+71 - END REPAIR, 2018 DIG 12 RECOAT
9+04 - BEGIN REPAIR, 2018 DIG 13 RECOAT
9+07 - END REPAIR, 2018 DIG 13 RECOAT
9+60 - PI. 24' 23" 09 RT.
9+62 - PI. 43' 42" 21 RT.
9+64 - PI. 43' 42" 21 RT.
9+75 - BEGIN REPAIR, 2018 DIG 14 RECOAT
9+77 - END REPAIR, 2018 DIG 14 RECOAT
10+12 - BEGIN REPAIR, 2018 DIG 15 RECOAT
10+15 - END REPAIR, 2018 DIG 15 RECOAT
10+39 - BEGIN REPAIR, 2018 DIG 16 RECOAT
10+39 - END REPAIR, 2018 DIG 16 RECOAT
10+50 - DIRT RD

11+21 - BEGIN REPAIR, 2018 DIG 17 RECOAT
11+23 - END REPAIR, 2018 DIG 17 RECOAT
11+63 - BEGIN REPAIR, 2018 DIG 17.5 RECOAT
11+65 - END REPAIR, 2018 DIG 17.5 RECOAT



LEGEND:

- CHECK VALVE
- VALVE
- VALVE FUNCTION
- FLANGE
- TEE
- TAP
- CASING
- HDD/BORE
- RIVER WEIGHT
- SLEEVE
- COMPOSITE SLEEVE
- POINT OF INFLECTION
- AERIAL MARKER
- LINE MARKER
- AGM MARKER
- MILE POST MARKER
- RECTIFIER
- BOND STATION
- CP TEST POINT
- STA. EQUATION
- FOCUS PIPELINE
- GROUND PROFILE
- PIPE PROFILE
- COUNTY BOUNDARY
- TOWNSHIP & RANGE SECTION
- PLAINS PIPELINES
 - ACTIVE DOT
 - REG GATHERING
 - REG LOW STRESS CAT 1
 - REG LOW STRESS CAT 3
 - ACTIVE NON-JURIS
 - IDLED
 - INACTIVE
 - RETIRED
 - ABANDONED
- PLAINS FACILITIES
 - PIPE
 - TRUCK
 - LPG
 - NATURAL GAS

GENERAL NOTES:

- THIS DRAWING HAS BEEN PREPARED FROM SOURCES CONSIDERED TO BE RELIABLE. FIELD VERIFICATION OF THE PIPELINE ASSETS SHOWN HEREON SHOULD BE PERFORMED PRIOR TO STARTING EXCAVATION OR ANY OTHER WORK ON OR AROUND THE PIPELINE.
- PROFILE BASED ON U.S.G.S. DIGITAL ELEVATION MODEL, 10 METER GRID RESOLUTION, UNLESS OTHERWISE SPECIFIED.
- DISTANCES AND DIMENSIONS SHOWN HEREON ARE GRID IN U.S. SURVEY FEET, BASED ON: NAD 1983 UTM Zone 15N FootUS

REFERENCE DRAWINGS:

MATERIAL LIST:

TYPE	DESCRIPTION	QTY
BEND	OVER	4
BEND	RIGHT	3
BEND	SAG	3
CP TEST STATION	TEST STA	1
FLANGE	RFNECK	6
TAP	THREAD-O-LET	1
TEE	EXTRUDED	1
VALVE	GATE	1

INDEXED PIPE DATA:

INDEX	O.D.	W.T.	SEAM	GRADE	INSTALL	LENGTH
1	10	0.25	ERW - HF	F-52	12/14/2017	2.2
2	10	0.25	ERW - HF	X-52	12/14/2017	1,256.6
3	10	0.25	ERW - HF	Y-52	12/14/2017	17.0
4	10	0.25	SMLS	X-52	12/14/2017	1.4
5	10	0.312	SMLS	Y-52	12/14/2017	3.8

COATING

INDEX	TYPE	APPLIED	LENGTH
A	FBE		1,221.2
B	PAINT		16.8
C	LIQ ZEPOXY	9/17/2018	16.0
D	LIQ ZEPOXY	9/28/2018	5.0
E	LIQ ZEPOXY	9/28/2018	2.0
F	LIQ ZEPOXY	10/12/2018	11.0
G	LIQ ZEPOXY	10/15/2018	2.0
H	LIQ ZEPOXY	10/16/2018	7.0

PLAINS ALL AMERICAN PIPELINE, L.P.

DIVISION: **ROCKY MOUNTAIN PL DIVISION**

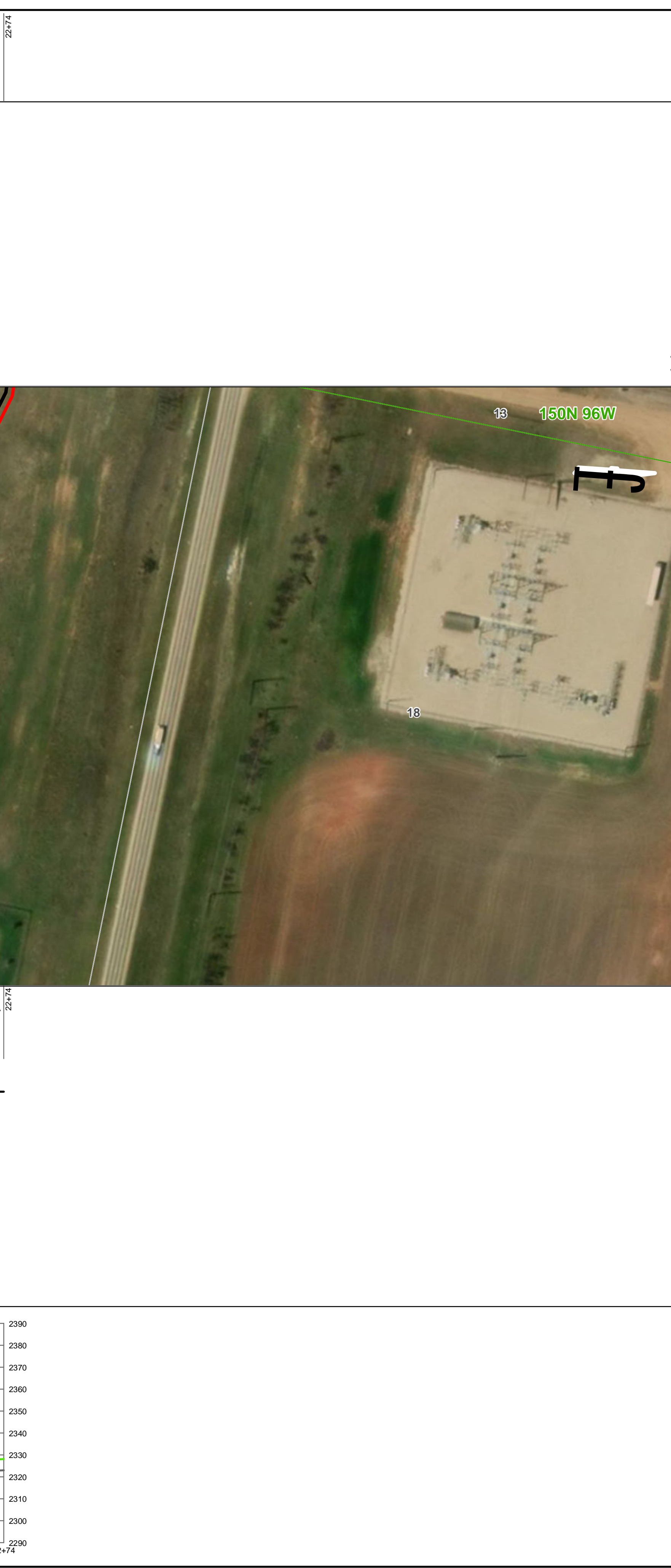
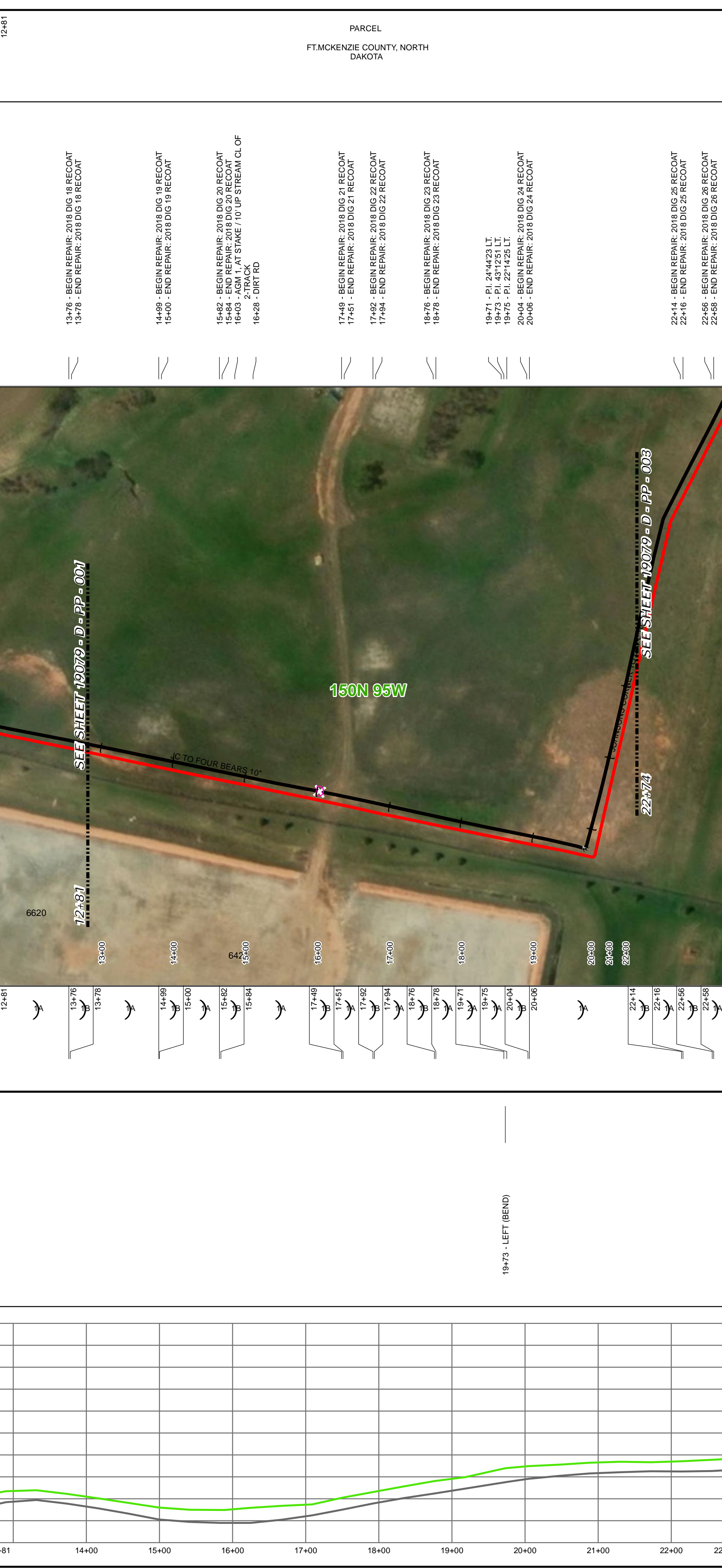
BELFIELD PL DISTRICT, ND

LINE NAME: **JC TO FOUR BEARS 10" 0+00 TO 12+81**

OPERATING STATUS: AC	REG AGENCY: DOT	COMMODITY: CRUDE OIL
STATIONING REFERENCE: SURVEY	GRAPHIC SCALE: 1 in = 100 ft	HORIZONTAL SCALE: STATIC
ROUTE ID: 17923	SHEETNUM: 001	

OWNER
STATIONING
ALIGNMENT
PIPE DATA
PROFILE

12+81
12+81
13+76
13+76
14+98
14+98
15+00
15+00
15+82
15+82
16+03
16+03
16+28
16+28
17+49
17+49
17+51
17+51
17+82
17+82
17+94
17+94
18+76
18+76
19+71
19+71
19+75
19+75
20+04
20+04
20+06
20+06
22+14
22+14
22+16
22+16
22+56
22+56
22+58
22+58
22+74
22+74



LEGEND:

- A CHECK VALVE
- C VALVE
- ⊕ VALVE FUNCTION
- FLANGE
- TEE
- TAP
- CASING
- HDD/BORE
- RIVER WEIGHT
- SLEEVE
- ⊗ COMPOSITE SLEEVE
- ⊘ POINT OF INFLECTION
- AERIAL MARKER
- 2 LINE MARKER
- D AGM MARKER
- ⊙ MILE POST MARKER
- ⊘ RECTIFIER
- 3/4 BOND STATION
- ⊙ CP TEST POINT
- ⊙ STA. EQUATION
- FOCUS PIPELINE
- GROUND PROFILE
- PIPE PROFILE
- COUNTY BOUNDARY
- TOWNSHIP & RANGE
- SECTION

PLAINS PIPELINES

- ACTIVE DOT
- REG GATHERING
- REG LOW STRESS CAT 1
- REG LOW STRESS CAT 3
- ACTIVE NON-JURIS
- IDLED
- INACTIVE
- RETIRED
- ABANDONED

PLAINS FACILITIES

- PIPE
- TRUCK
- LPG
- NATURAL GAS

GENERAL NOTES:

- THIS DRAWING HAS BEEN PREPARED FROM SOURCES CONSIDERED TO BE RELIABLE. FIELD VERIFICATION OF THE PIPELINE ASSETS SHOWN HEREON SHOULD BE PERFORMED PRIOR TO STARTING EXCAVATION OR ANY OTHER WORK ON OR AROUND THE PIPELINE.
- PROFILE BASED ON U.S.G.S. DIGITAL ELEVATION MODEL, 10 METER GRID RESOLUTION, UNLESS OTHERWISE SPECIFIED.
- DISTANCES AND DIMENSIONS SHOWN HEREON ARE GRID IN U.S. SURVEY FEET, BASED ON: NAD 1983 UTM Zone 15N FootUS

REFERENCE DRAWINGS:

MATERIAL LIST:

MATERIAL LIST		
TYPE	DESCRIPTION	QTY
BEND	LEFT	1
PIPELINE MARKER	MKR_CIS	1
PIPELINE MARKER	AGM	1

INDEXED PIPE DATA:

INDEX	O.D.	W.T.	PIPE		INSTALL	LENGTH
			SEAM	GRADE		
1	10	0.25	ERW - HF	X-52	12/14/2017	989.2
2	10	0.25	ERW - HF	Y-52	12/14/2017	3.8

INDEX	COATING		APPLIED	LENGTH
	TYPE	DESCRIPTION		
A	FBE		9/17/2018	976.0
B	LIQ ZEPOXY		9/17/2018	17.0

NO.	DATE	BY	REVISION
0	11/01/2019	LQT	ISSUED FOR OPERATIONS

DIVISION: **ROCKY MOUNTAIN PL DIVISION**

BELFIELD PL DISTRICT, ND

LINE NAME: **JC TO FOUR BEARS 10" 12+81 TO 22+74**

OPERATING STATUS: AC	REG AGENCY: DOT	COMMODITY: CRUDE OIL
STATIONING REFERENCE: SURVEY	GRAPHIC SCALE: 1 in = 100 ft	HORIZONTAL SCALE: STATIC
ROUTE ID: 17923	SHEETNUM: 002	

OWNER
STATIONING
ALIGNMENT
PIPE DATA
PROFILE

22+74 22+74

PARCEL
FT. MCKENZIE COUNTY, NORTH
DAKOTA

37+49 37+49

24+23 - BEGIN REPAIR, 2018 DIG 27 RECOAT
24+25 - END REPAIR, 2018 DIG 27 RECOAT
24+34 - PL 0.75" 10' WATER LINE XING, (CLR. 33.8)
24+34 - PL 1.5" 17.48 RT.
24+93 - BEGIN REPAIR, 2018 DIG 28 RECOAT
24+95 - END REPAIR, 2018 DIG 28 RECOAT

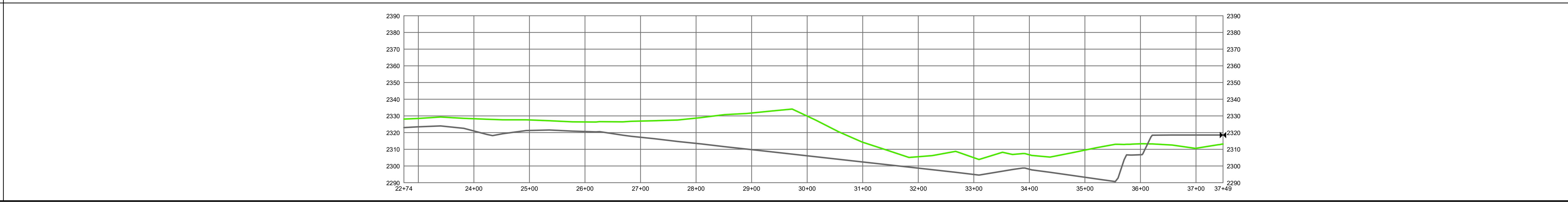
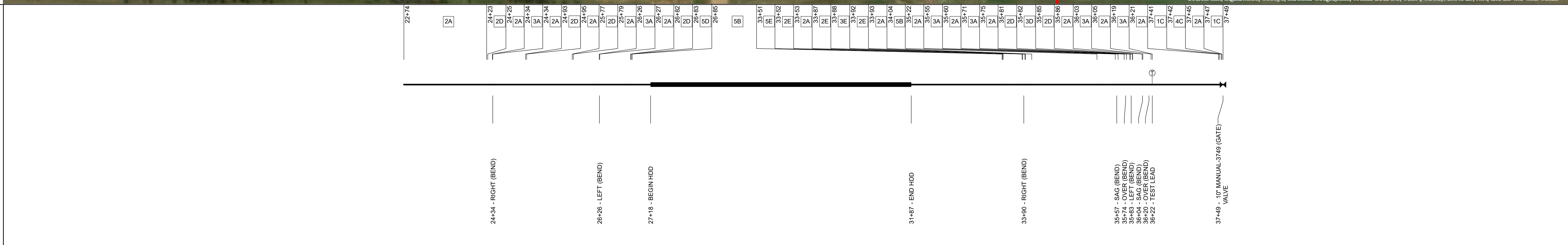
25+77 - BEGIN REPAIR, 2018 DIG 29 RECOAT
25+79 - END REPAIR, 2018 DIG 29 RECOAT

26+26 - PL 0.8" 18.53 LT.
26+26 - PL 0.8" 18.53 LT.
26+50 - MCKENZIE OH POWER LINE
26+66 - MCKENZIE 4" OH POWER LINE, (CLR. 25.2)
26+82 - BEGIN REPAIR, 2018 DIG 30 RECOAT
26+85 - END REPAIR, 2018 DIG 30 RECOAT

31+13 - 108TH AVE NW
31+58 - FIBER OPTIC XING

33+51 - BEGIN REPAIR, 2018 DIG 31 RECOAT
33+53 - END REPAIR, 2018 DIG 31 RECOAT
33+54 - BEGIN REPAIR, 2018 DIG 31 RECOAT
33+56 - END REPAIR, 2018 DIG 31 RECOAT
33+80 - PL 4.4" 12.45 RT.
33+82 - PL 2.3" 20.03 RT.
33+85 - END REPAIR, 2018 DIG 32 RECOAT

34+49 - PARADIGM 12" CRD PL XING
34+50 - PARADIGM 12" CRD PL XING
35+01 - TARGA GAS PL XING
35+02 - TARGA GAS PL XING
35+03 - TARGA GAS PL XING
35+04 - TARGA GAS PL XING
35+05 - TARGA GAS PL XING
35+06 - TARGA GAS PL XING
35+07 - TARGA GAS PL XING
35+08 - TARGA GAS PL XING
35+09 - TARGA GAS PL XING
35+10 - TARGA GAS PL XING
35+11 - TARGA GAS PL XING
35+12 - TARGA GAS PL XING
35+13 - TARGA GAS PL XING
35+14 - TARGA GAS PL XING
35+15 - TARGA GAS PL XING
35+16 - TARGA GAS PL XING
35+17 - TARGA GAS PL XING
35+18 - TARGA GAS PL XING
35+19 - TARGA GAS PL XING
35+20 - TARGA GAS PL XING
35+21 - TARGA GAS PL XING
35+22 - TARGA GAS PL XING
35+23 - TARGA GAS PL XING
35+24 - TARGA GAS PL XING
35+25 - TARGA GAS PL XING
35+26 - TARGA GAS PL XING
35+27 - TARGA GAS PL XING
35+28 - TARGA GAS PL XING
35+29 - TARGA GAS PL XING
35+30 - TARGA GAS PL XING
35+31 - TARGA GAS PL XING
35+32 - TARGA GAS PL XING
35+33 - TARGA GAS PL XING
35+34 - TARGA GAS PL XING
35+35 - TARGA GAS PL XING
35+36 - TARGA GAS PL XING
35+37 - TARGA GAS PL XING
35+38 - TARGA GAS PL XING
35+39 - TARGA GAS PL XING
35+40 - TARGA GAS PL XING
35+41 - TARGA GAS PL XING
35+42 - TARGA GAS PL XING
35+43 - TARGA GAS PL XING
35+44 - TARGA GAS PL XING
35+45 - TARGA GAS PL XING
35+46 - TARGA GAS PL XING
35+47 - TARGA GAS PL XING
35+48 - TARGA GAS PL XING
35+49 - TARGA GAS PL XING
35+50 - TARGA GAS PL XING
35+51 - TARGA GAS PL XING
35+52 - TARGA GAS PL XING
35+53 - TARGA GAS PL XING
35+54 - TARGA GAS PL XING
35+55 - TARGA GAS PL XING
35+56 - TARGA GAS PL XING
35+57 - TARGA GAS PL XING
35+58 - TARGA GAS PL XING
35+59 - TARGA GAS PL XING
35+60 - TARGA GAS PL XING
35+61 - TARGA GAS PL XING
35+62 - TARGA GAS PL XING
35+63 - TARGA GAS PL XING
35+64 - TARGA GAS PL XING
35+65 - TARGA GAS PL XING
35+66 - TARGA GAS PL XING
35+67 - TARGA GAS PL XING
35+68 - TARGA GAS PL XING
35+69 - TARGA GAS PL XING
35+70 - TARGA GAS PL XING
35+71 - TARGA GAS PL XING
35+72 - TARGA GAS PL XING
35+73 - TARGA GAS PL XING
35+74 - TARGA GAS PL XING
35+75 - TARGA GAS PL XING
35+76 - TARGA GAS PL XING
35+77 - TARGA GAS PL XING
35+78 - TARGA GAS PL XING
35+79 - TARGA GAS PL XING
35+80 - TARGA GAS PL XING
35+81 - TARGA GAS PL XING
35+82 - TARGA GAS PL XING
35+83 - TARGA GAS PL XING
35+84 - TARGA GAS PL XING
35+85 - TARGA GAS PL XING
35+86 - TARGA GAS PL XING
35+87 - TARGA GAS PL XING
35+88 - TARGA GAS PL XING
35+89 - TARGA GAS PL XING
35+90 - TARGA GAS PL XING
35+91 - TARGA GAS PL XING
35+92 - TARGA GAS PL XING
35+93 - TARGA GAS PL XING
35+94 - TARGA GAS PL XING
35+95 - TARGA GAS PL XING
35+96 - TARGA GAS PL XING
35+97 - TARGA GAS PL XING
35+98 - TARGA GAS PL XING
35+99 - TARGA GAS PL XING
36+00 - TARGA GAS PL XING
36+01 - TARGA GAS PL XING
36+02 - TARGA GAS PL XING
36+03 - TARGA GAS PL XING
36+04 - TARGA GAS PL XING
36+05 - TARGA GAS PL XING
36+06 - TARGA GAS PL XING
36+07 - TARGA GAS PL XING
36+08 - TARGA GAS PL XING
36+09 - TARGA GAS PL XING
36+10 - TARGA GAS PL XING
36+11 - TARGA GAS PL XING
36+12 - TARGA GAS PL XING
36+13 - TARGA GAS PL XING
36+14 - TARGA GAS PL XING
36+15 - TARGA GAS PL XING
36+16 - TARGA GAS PL XING
36+17 - TARGA GAS PL XING
36+18 - TARGA GAS PL XING
36+19 - TARGA GAS PL XING
36+20 - TARGA GAS PL XING
36+21 - TARGA GAS PL XING
36+22 - TARGA GAS PL XING
36+23 - TARGA GAS PL XING
36+24 - TARGA GAS PL XING
36+25 - TARGA GAS PL XING
36+26 - TARGA GAS PL XING
36+27 - TARGA GAS PL XING
36+28 - TARGA GAS PL XING
36+29 - TARGA GAS PL XING
36+30 - TARGA GAS PL XING
36+31 - TARGA GAS PL XING
36+32 - TARGA GAS PL XING
36+33 - TARGA GAS PL XING
36+34 - TARGA GAS PL XING
36+35 - TARGA GAS PL XING
36+36 - TARGA GAS PL XING
36+37 - TARGA GAS PL XING
36+38 - TARGA GAS PL XING
36+39 - TARGA GAS PL XING
36+40 - TARGA GAS PL XING
36+41 - TARGA GAS PL XING
36+42 - TARGA GAS PL XING
36+43 - TARGA GAS PL XING
36+44 - TARGA GAS PL XING
36+45 - TARGA GAS PL XING
36+46 - TARGA GAS PL XING
36+47 - TARGA GAS PL XING
36+48 - TARGA GAS PL XING
36+49 - TARGA GAS PL XING



LEGEND:

- CHECK VALVE
- VALVE
- VALVE FUNCTION
- FLANGE
- TEE
- TAP
- CASING
- HDD/BORE
- RIVER WEIGHT
- SLEEVE
- COMPOSITE SLEEVE
- POINT OF INFLECTION
- AERIAL MARKER
- LINE MARKER
- AGM MARKER
- MILE POST MARKER
- RECTIFIER
- BOND STATION
- CP TEST POINT
- STA. EQUATION
- FOCUS PIPELINE
- GROUND PROFILE
- PIPE PROFILE
- COUNTY BOUNDARY
- TOWNSHIP & RANGE
- SECTION

PLAINS PIPELINES

- ACTIVE DOT
- REG GATHERING
- REG LOW STRESS CAT 1
- REG LOW STRESS CAT 3
- ACTIVE NON-JURIS
- IDLED
- INACTIVE
- RETIRED
- ABANDONED

PLAINS FACILITIES

- PIPE
- TRUCK
- LPG
- NATURAL GAS

GENERAL NOTES:

- THIS DRAWING HAS BEEN PREPARED FROM SOURCES CONSIDERED TO BE RELIABLE. FIELD VERIFICATION OF THE PIPELINE ASSETS SHOWN HEREON SHOULD BE PERFORMED PRIOR TO STARTING EXCAVATION OR ANY OTHER WORK ON OR AROUND THE PIPELINE.
- PROFILE BASED ON U.S.G.S. DIGITAL ELEVATION MODEL, 10 METER GRID RESOLUTION, UNLESS OTHERWISE SPECIFIED.
- DISTANCES AND DIMENSIONS SHOWN HEREON ARE GRID IN U.S. SURVEY FEET, BASED ON: NAD 1983 UTM Zone 15N FootUS

REFERENCE DRAWINGS:

MATERIAL LIST:

TYPE	DESCRIPTION	QTY
BEND	LEFT	2
BEND	OVER	2
BEND	RIGHT	2
BEND	SAG	2
BORE		1
CP TEST STATION	TESTSTA	1
FLANGE	RFNECK	4
PIPELINE MARKER	MKR_CIS	2
TEE	EXTRUDED	1
VALVE	GATE	1

INDEXED PIPE DATA:

INDEX	O.D.	W.T.	SEAM	GRADE	INSTALL	LENGTH
1	10	0.25	ERW - HF	F-52	12/14/2017	2.9
2	10	0.25	ERW - HF	X-52	12/14/2017	660.3
3	10	0.25	ERW - HF	Y-52	12/14/2017	22.4
4	10	0.25	SMLS	X-52	12/14/2017	3.4
5	10	0.365	ERW - HF	X-52	12/14/2017	785.6

COATING

INDEX	TYPE	APPLIED	LENGTH
A	FBE		662.9
B	FBE/ARO		783.3
C	PAINT		6.3
D	LIQ ZEPOXY	9/19/2018	14.0
E	LIQ ZEPOXY	9/26/2018	8.0

REVISION

NO.	DATE	BY	REVISION
0	11/01/2019	LQT	ISSUED FOR OPERATIONS

PLAINS ALL AMERICAN PIPELINE, L.P.

DIVISION: **ROCKY MOUNTAIN PL DIVISION**

BELFIELD PL DISTRICT, ND

LINE NAME: **JC TO FOUR BEARS 10" 22+74 TO 37+49**

OPERATING STATUS: **AC** REG AGENCY: **DOT** COMMODITY: **CRUDE OIL**

STATIONING REFERENCE: **SURVEY** GRAPHIC SCALE: **1 in = 100 ft** HORIZONTAL SCALE: **STATIC**

ROUTE ID: **17923** SHEETNUM: **003**