

EMERGENCY RESPONSE PLAN (ERP)



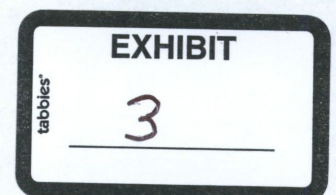
ERP for North and South of the River

ND Groups Included in This Plan Are:

- Base Production
- Construction
- Completions
- Drilling Operations

Hess North Dakota Emergency Notification
Tioga Office Control Room 1-800-406-1697

Revised June 22, 2016.



	<u>Page</u>
Table of Contents	ii
Revision Record and Distribution List	iii
1.0 INTRODUCTION	
1.1 Introduction	1
1.2 Plan Maintenance	1
1.3 Asset Description	2-3
Figure 1.1 Escalation Matrix	4
Figure 1.2 Incident Notification Procedure	5
2.0 RESPONSE ACTIONS	
2.1 Overview of Response Actions	6
2.2 Emergency Response Team Activities	7
2.3 Emergency Shut Down System (ESD)	8-9
Figure 2.1 Fatality Response Checklist	10
Figure 2.2 Medical Evacuation (MEDEVAC) Response Checklist	11
2.4 Medical Evacuation – Setting up a Helicopter Landing Zone (LZ)	12-14
Figure 2.3 Fire / Explosion Response Checklist	15
Figure 2.4 Severe Weather Response Checklist	16-17
Figure 2.5 Flood Response Checklist	18
Figure 2.6 Hydrogen Sulfide (H ₂ S) Response Checklist	19
Figure 2.7 Injury / Illness Response Checklist	20
Figure 2.8 Oil / Chemical Spill Response Checklist	21
Figure 2.9 Security – Bomb Threat Response Checklists	22-23
Figure 2.10 Acrolein – Beaver Lodge Response Checklist	24-25
Figure 2.11 Production Tactical Response Plan – SOR SC-4WX	26-27
Figure 2.12 Well Control Blowout Response Checklist	28-30
3.0 NOTIFICATIONS	
3.1 Internal Notifications	31
Figure 3.1 Base Production Legacy Internal Notifications	31
Figure 3.2 Base Production NOR Internal Notifications	32
Figure 3.3 Base Production SOR Internal Notifications	33
Figure 3.4 .F Construction Internal Notifications	34
Figure 3.5 Completions Internal Notifications	35
Figure 3.6 Drilling Operations Internal Notifications	36
3.2 External Notifications	37
Figure 3.7 Agency Notification Matrix	38
Figure 3.8 External Notification References & Resources	38-45
APPENDIX A – MAPs	46
APPENDIX B – Hess Emergency Response Trailers	47-50

NOTE: It is the Plan Holder's responsibility to:

- Ensure that all changes and updates are made;
- Remove and discard obsolete pages; and
- Replace obsolete pages with the updated pages.

REVISION RECORD			
CHANGE DATE	REMOVE	INSERT	DESCRIPTION OF CHANGE(S)
	PAGE NUMBER(S)		
May 11, 24, 30 2012	None.	Changes to p. 3-2 and 3-3.	Add missing names and contact information. Update names and contact information.
June 10, 2014			Annual review and update.
June 18, 2014	Removed Tornado Response Checklist	Added Serve Weather Response Checklist	Update – includes Tornado Info
Sept 4, 2014		Added Internal Contact Lists for Construction, Completions and Drilling	Construction, Completions and Drilling groups added to the NOR/SOR ERP. Revised Escalation Matrix and Incident Notification Procedure.
Feb 12, 2015			Annual review and update
Aug 3, 2015			Update to Spill Trailer Inventory
May 18, 2016			Contacts/numbers
DISTRIBUTION LIST			
PLAN HOLDERS			
<i>Managers</i>			
<i>Superintendents</i>			
<i>EHS Specialists</i>			
<i>EHS Managers</i>			
<i>Facilities Engineer</i>			

1.1 INTRODUCTION

The purpose of this Emergency Response Plan (ERP) is to provide Hess personnel and their contractors with a quick reference to emergency procedures and guidelines to assist with courses of action in the event of a non-standard event.

This Emergency Response Plan (ERP):

- Implements Company policy;
- Provides guidelines for personnel responding to releases from Hess Corporation's North Dakota Operations Function;
- Helps on-scene personnel prepare for releases;
- Ensures an effective, comprehensive response;
- Reduces chances of injury or damage to responders, the public, and the environment;
- Defines alert and notification procedures to be followed when a release occurs;
- Outlines response procedures and techniques for combating the release; and
- Is realistic, practical, and easy to use.

The sole purpose of this document is to aid local Hess personnel and their contractors in the event of any number of emergencies identified in Section 2.0.

1.2 PLAN MAINTENANCE

This ERP should undergo an annual review and update by the EHS Specialist with input as appropriate from Hess Management and the ER supervisor. Lessons learned from training, exercises and drills or event critiques shall be taken into consideration in the review process and as such provide input in the review process. Emergency contact numbers should also be called annually to ensure accuracy.

The following are examples of changes in operating conditions that are considered to cause a significant change to the ERP.

- Change in the type of hydrocarbons handled;
- Change in the type of potential incident that may occur;
- Change in the primary contractors;
- Change in location or availability of medical facilities or resources;
- Post incident evaluation results that identify a significant deficiency in response capability;
- Change in emergency response procedures; or
- Any additional information relating to circumstances that may affect full implementation of the ERP.

Upon making revisions to the document, the dates noted on the footers should be changed and the record of revision located in the Foreword should be utilized accordingly. Updates to the plans shall then be distributed to each of the plan holders listed on the distribution list, which is also located in the Foreword.

1.3 ASSET DESCRIPTION

This plan covers emergency procedures and resources related to the following facilities:

FACILITY LOCATIONS

Facility Name: Base Production, Construction, Completions and Drilling Operations Business Function

As of March 2015 there are over 1450 oil/gas wells in the Hess ND production field. The field is broadly broken up in to two parts, Legacy and Bakken.

The Legacy field is typically made up of a series of wells feeding a central battery with a number of central batteries feeding a larger central facility. The well sites will usually (but not always) contain a pumping unit and line heater. The central battery will contain a combination of test and production vessel (separator and/or treater), possible line heater, gas knockout, chemical and fresh water injection systems, relief tank and in some cases an additional two phase separator. The central facilities contain multiple separators (including in some cases freewater knockouts) and treaters, storage tanks, chemical and fresh water injection systems, piping and an electrical building. The well sites, central batteries and central facilities are largely interconnected with pipelines including, oil, water, emulsion and gas. In addition to oil wells, the legacy field includes a number of injection wells and salt water disposal facilities that are used to re-inject produced water into various deep underground formations.

The Bakken field is made up of both stand-alone facilities, multi-well stand-alone facilities and gathered facilities both north and south of Lake Sakakawea. A typical vertical facility will contain a two phase separator, vertical treater, high and low pressure flare and flare knockout, storage tanks, piping, an electrical building, chemical and possibly freshwater injection systems. A typical multi-well horizontal facility will include a Portable Production Unit (PPU), Portable Production Facility (PPF), piping and an electrical building, chemical and possibly freshwater injection systems. However either type of facility may contain fewer or additional types/pieces of equipment.

In addition to the production field, Hess also maintains a gas plant, train loading facility for crude oil, propane, butane and natural gasoline, a truck offload facility and multiple gathering lines for oil and gas both north and south of Lake Sakakawea.

- 1. NOR-West Production Operations Supt. - Caleb Eide –701-664-6208/ c701-641-0759 NOR Operations Manager – Sean Werner – 701-664-6230, c432-209-1089***
- 2. NOR-Central Production Operations Supt. - Thomas Dransfield –701-4207059/ c832-205-4760 NOR Operations Manager – Sean Werner – 701-664-6230, c432-209-1089***
- 3. NOR-East Production Operations Supt. - Jeremy Daugherty NOR Operations Manager – Sean Werner – 701-664-6230, c432-209-1089***
- 4. NOR-Legacy Area Lead - Jim Wilson –701-420-6993/ c701-509-5033***

- 5. MR&I Subsurface – Workover Lead – Logan Stoner – 701-664-6275/ c701-641-8858; Lance Roness- 701-420-6919/ c701-648-9511; Sean Knutson – 701-509-6046**
- 6. SOR South Production Operations Supt. - Killdeer: Cody Dukart – 701-764-8411/ c701-339-9000 SOR Operations Manager – Stacey Nachbaur – 701-420-6989/ c701-580-1658**
- 7. SOR Legacy Lead – Fryburg – Jim Wilson - 701-420-6993/ c701-509-5033**
- 8. SOR North Production Operations Supt. - Keene: Joey Kitchens – 701-664-6214/ c701-641-0138 SOR Operations Manager – Stacey Nachbaur – c701-580-1658**
- 9. Construction / . F Manager – Eric Rolli – 701-420-6925/ c701-578-5919**
- 10. Drilling & Completions Director – Houston: Ryan Lamothe – 713-496-5253/ c281-781-9243 Completions Supt. Rotators: Marvin Romkee – 701-420-6943/ c701-641-0777; Bill Sem – 701-420-6943/ c701-570-1389; Drilling Operations Supt. Rotators: Tony Piercey – ; Mike Roberts– 713-253-6073; Jim Stover – 701-509-2042; Will Slagle – 701-641-6578**

Tioga Office (701) 664-3381
10384 68th Street NW
Tioga, North Dakota, 58852

Keene Office (701) 675-2258
10892 Hwy 23
Keene, North Dakota, 58847

Killdeer Office (701) 764-8411
417 109th Ave SW
Killdeer, North Dakota, 58640

Belfield Office (701) 575-4226
905 Hwy 10 East
Belfield, North Dakota, 58622

Minot Office (701) 420-6900
3015 16th Street SW Suite 20
Minot, North Dakota, 58701

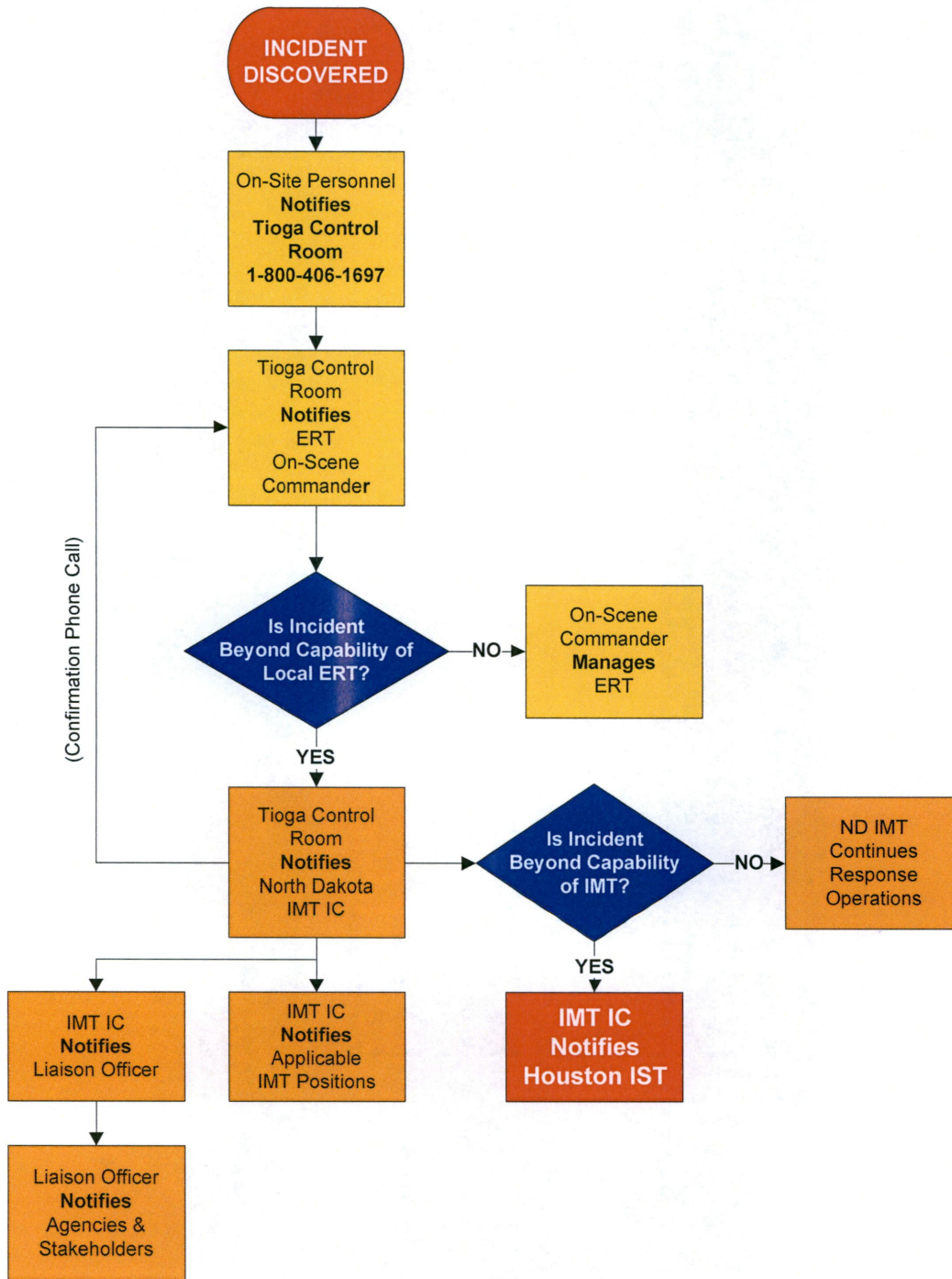
**Figure 1.1
Escalation Matrix**

	People	Environment	Asset	Reputation	Action
3 Incident Support Team	<ul style="list-style-type: none"> Major injury/illness or fatality Permanent partial disability or lost time injury (>4 days) Person missing >6 hrs Local civil unrest 	<ul style="list-style-type: none"> Local effect or greater Significant scale (> 1 sq mile) Major term impact (months) 	<ul style="list-style-type: none"> Damage to asset's greater than 1 million USD 	<ul style="list-style-type: none"> Minor impact Short-term local concern Some impact on asset level non-production activities National and local media inquiries/coverage Follow-up questions & articles Small/Single social media campaign 	ExCom Notified IST Activated IMT Activated ERT Activated
2 Incident Management Team	<ul style="list-style-type: none"> Major injury/illness Permanent partial disability or lost time injury (>4 days) Persons missing (0-6 hrs) Threat of local civil unrest 	<ul style="list-style-type: none"> Minor effect Localized scale (<1 sq mile) Medium term impact (weeks) 	<ul style="list-style-type: none"> Reasonable threat of a loss of the asset 	<ul style="list-style-type: none"> Slight impact Local mention only Quickly forgotten Freedom to operate unaffected Local media inquiries/mention only No follow up questions/articles Factual social media only 	
1 Emergency Response Team	<ul style="list-style-type: none"> First aid or medical treatment case Restricted duties or lost time injury (<4 days) 	<ul style="list-style-type: none"> Slight effect Localized scale (immediate area) Temporary impact (days) 	<ul style="list-style-type: none"> Activated by incident 	<ul style="list-style-type: none"> N/A 	

Response Escalation Categories

Categories 2 and 3 incidents listed above in the Escalation Matrix require immediate notification to the Tioga Office Control Room (CALL CENTER) at 1-800-406-1697.

Figure 1.2
Incident Notification Procedure



2.1 OVERVIEW OF RESPONSE ACTIONS

Initial response actions (Fig. 2.1) are those taken by operations personnel immediately upon becoming aware of a discharge or emergency incident, before the Emergency Response Team (ERT) is formed and functioning. Timely implementation of these initial steps is of the utmost importance because they can greatly affect the overall response operation.

The pages that follow discuss initial response actions. These emergencies are discussed in the order listed below:

- Fatality;
- Medical Evacuation (MEDEVAC);
- Fire/Explosion;
- Severe Weather;
- Flood;
- Hydrogen Sulfide (H₂S);
- Injury / Illness;
- Oil / Chemical Spill;
- Security
- Acrolein Release – Beaver Lodge
- Production Tactical Response Plan - SOR SC-4WX
- Well Control Blowout

It is important to note that **these actions are intended only as guidelines**. The appropriate response to a particular incident may vary greatly depending on the nature and severity of the incident and on other factors that are not readily addressed. Note that, **without exception, personnel and public safety is always the first priority**.

The first Company person on scene will function as the person-in-charge until relieved by an authorized person who will assume the position of the On-scene Incident Commander (IC). Transfer of command will take place as more senior management respond to the incident.

The person functioning as **On-scene Incident Commander** during the initial response period **has the authority to take the steps necessary to control the situation and should not be constrained by these general guidelines**.

2.2 EMERGENCY RESPONSE TEAM ACTIVITIES

Establish Site Control

- Identify Person-In-Charge (PIC) – “On Scene Commander”
- Isolate & Secure Area
- Evacuate Non-Responders
- Establish Personnel Accountability System
- Establish Isolation Zone(s)
- Identify Staging Areas & Check-In System

Establish Site Management

- Assess Incident (Including Incident Potential)
- Notify Control Room
- Implement Appropriate Contingency Plan
- Establish Operational Objectives
- Identify Tactics
- Assign Resources (Personnel/Equipment)
- Monitor Operations

Establish Site Safety

- Identify Chemical/Physical Hazards & Hazard Locations
- Define Hazard Control Zones
- Establish PPE Requirements
- Establish First Aid Station(s)
- Establish Decon Area prior to entering the Exclusion (Hot) Zone
- Conduct Pre-Entry Briefings
- Continuously Monitor Site for Hazard Changes

Establish Communications

- Establish Communications Linking PIC/On Scene Commander to Tactical Responders
- Establish Communications Linking PIC/On Scene Commander to Staging Area(s)
- Establish Communications linking Staging Area to Logistics Support
- Establish Communications linking PIC/On Scene Commander to ER Support Team

2.3 EMERGENCY SHUT DOWN SYSTEM (ESD)

The Emergency Shutdown System (ESD) is designed to minimize the consequences of emergency situations, escape of hydrocarbons, or outbreak of fire in hydrocarbon carrying areas or areas which may otherwise be hazardous.

The oil gathering booster pump stations have three automated features to assist with shutdowns as well as a relief valve installed. Each pump will automatically shut down in a no flow condition and under high pressure. Relief valves are also installed should the high pressure fail to work to allow for the excess pressure to be vented into a sump below the floor of the building. The final automated system available is an Emergency Shutdown available through ICONICS.

There are single unit ESD's that specifically shutdown an individual piece of equipment and or building (i.e. Compressors, Dehydration units, Vapor Recovery Units etc.). Also there are complete station shutdown ESD's that once pushed/pulled will isolate the entire station.

The emergency shutdown system for a process control system includes an emergency shutdown (ESD) valve and an associated valve actuator. An emergency shutdown (ESD) controller provides output signals to the ESD valve in the event of a failure in the process control system. A solenoid valve responds to the ESD controller to vent the actuator to a fail state. A digital valve controller (DVC) test strokes the ESD valve. An impedance booster device enables the dc (direct current) powering of the solenoid valve and the DVC over a two wire line while still permitting digital communication over the same two wire line.

A shut down valve (also referred to as SDV or Emergency shutdown valve, ESV, ESD, or ESDV) is part of the SIS (Safety Integrated System) it's an actuated valve designed to stop the flow of a hazardous fluid or external hydrocarbons (gases) upon the detection of a dangerous event.

Actuators are designed to fail open or closed depending on its location and involvement in the process. This provides protection against possible harm to people, equipment or the environment. Shutdown valves form part of a instrumented safety system. The process of providing automated safety protection upon the detection of a hazardous event is called functional safety.

STATION ESD LOCATED AT ENTRANCE TO WELL SITE



PUMPING WELL ESD VALVE ACTUATOR LOCATED ON FLOW LINE



STATION ESD LOCATED OUTSIDE OF PPU BUILDING



**FIGURE 2.1
RESPONSE CHECKLIST – FATALITY**

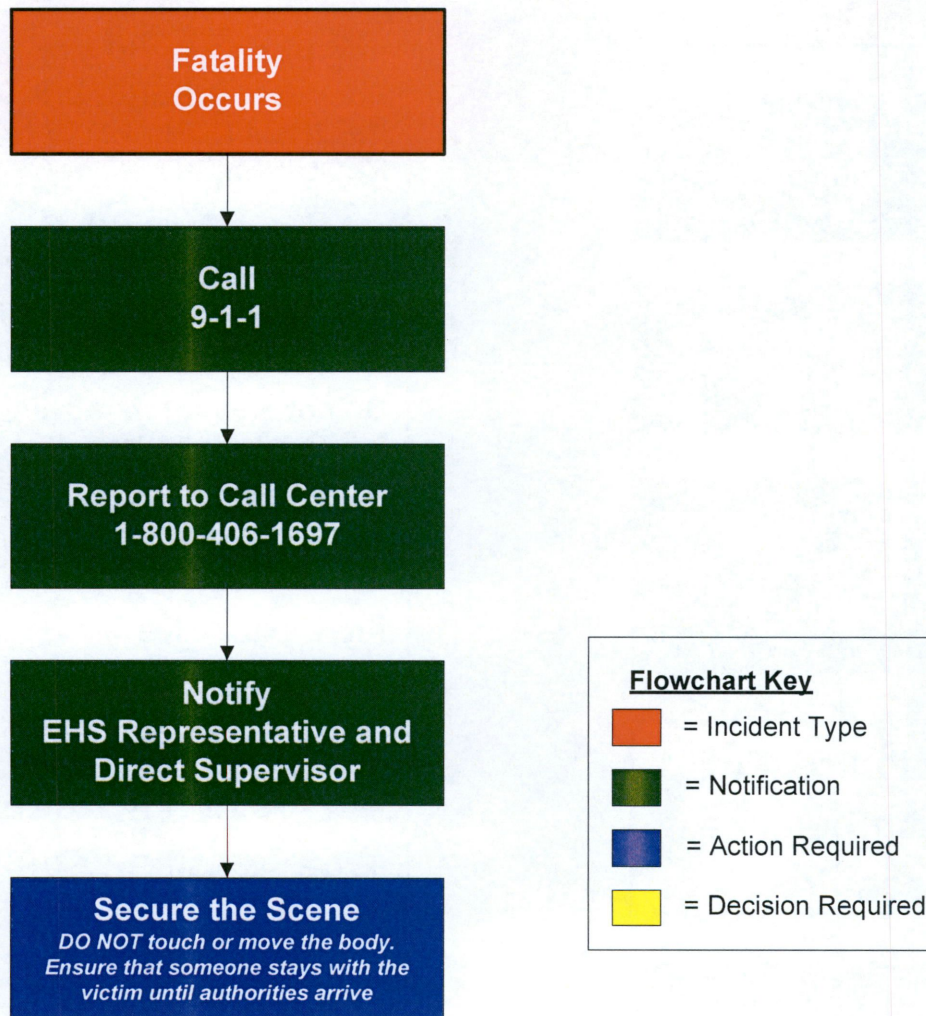
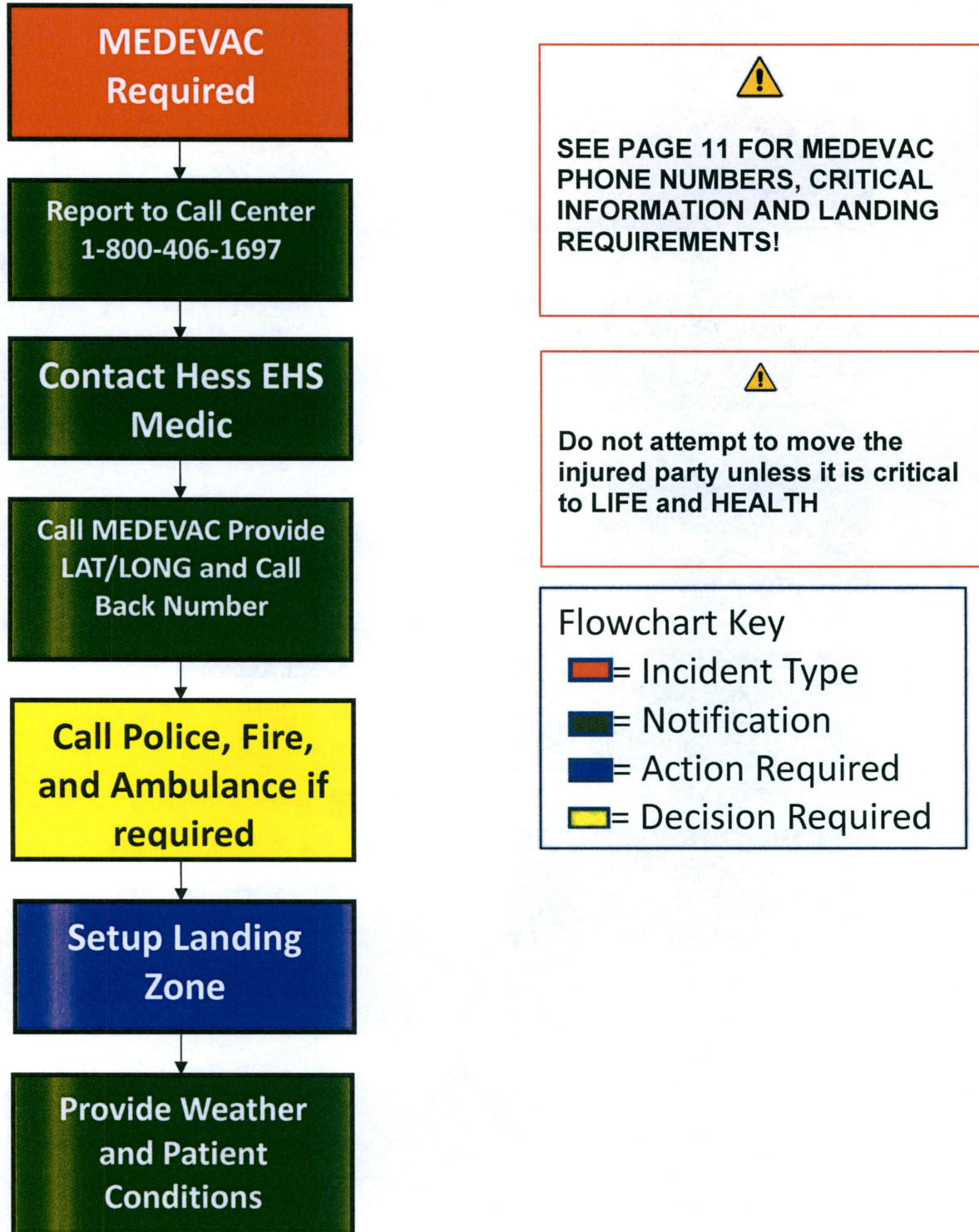


Figure 2.2

RESPONSE CHECKLIST- MEDICAL EVACUATION (MEDEVAC)

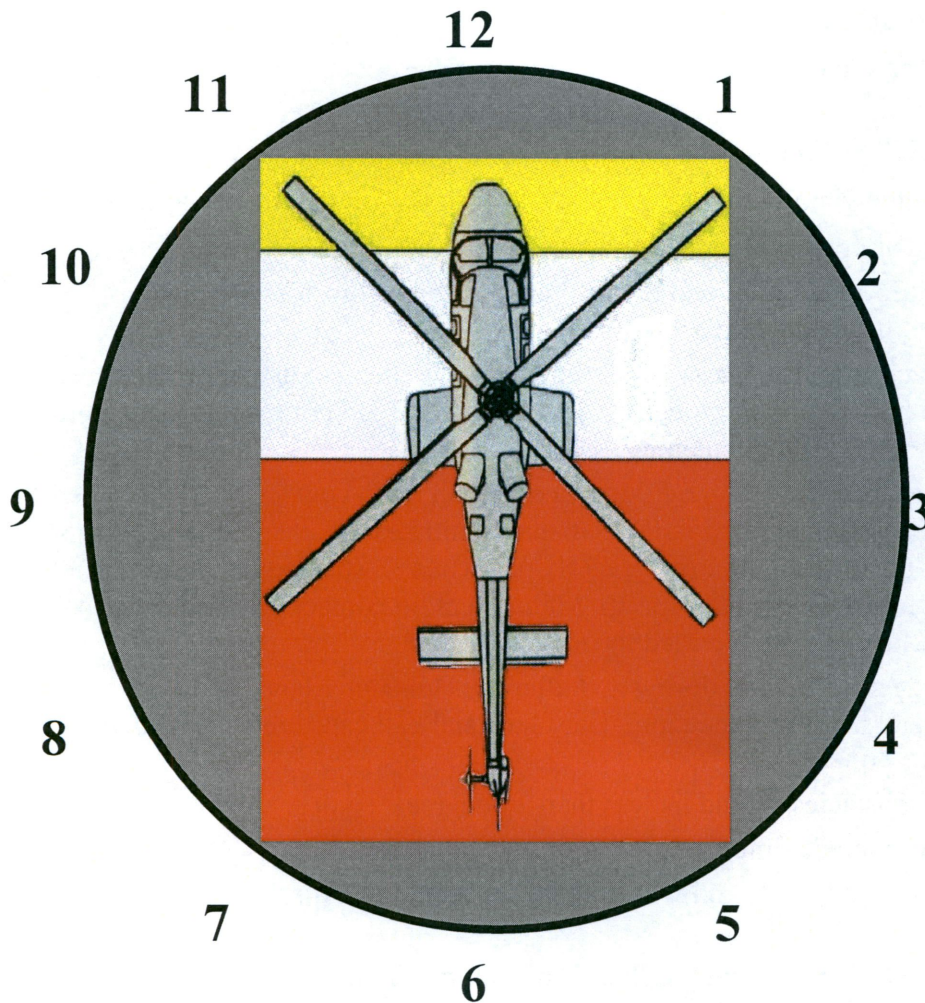


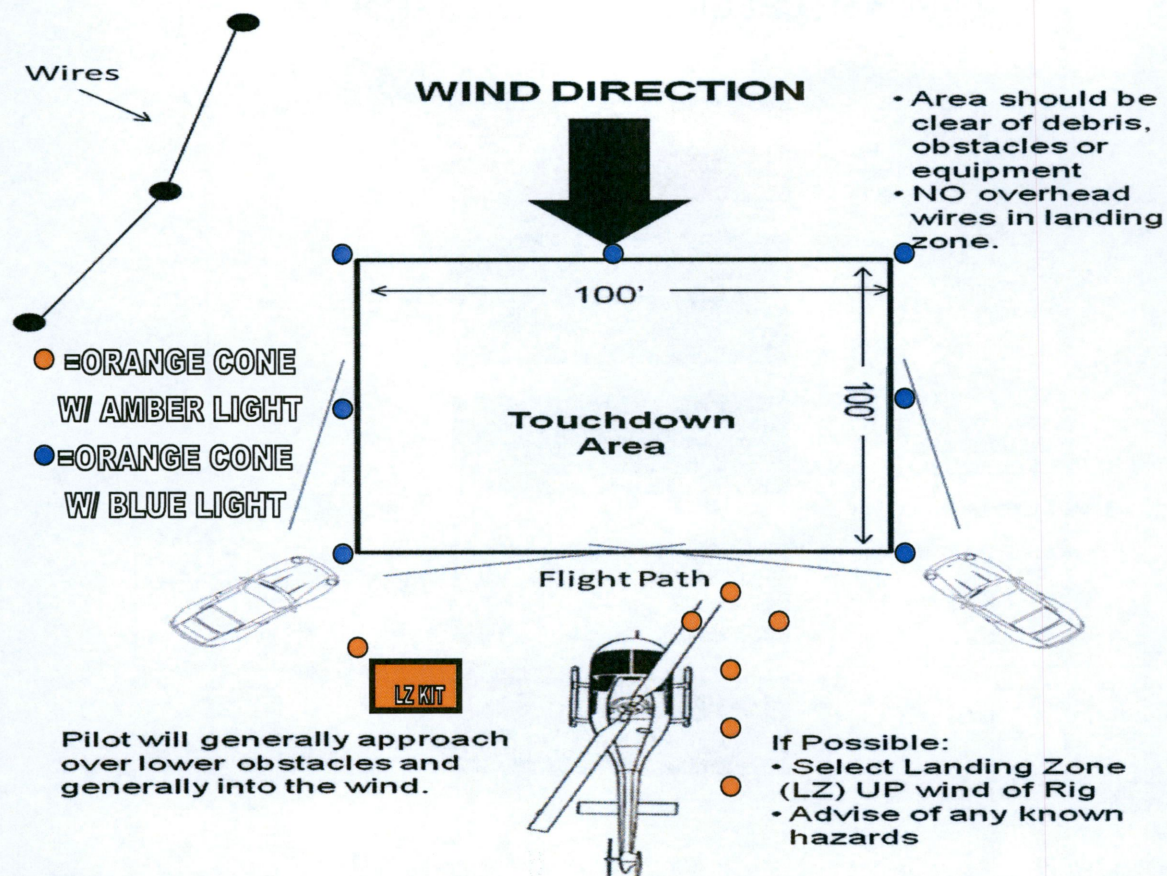
2.4 MEDICAL EVACUATION (MEDEVAC)

Setting up a Helicopter Landing Zone (LZ):

1. The Preferred Landing Zone (LZ) is:
 - 100 feet by 100 feet.
 - Level as possible (minimal slope - less than 8 degrees).
 - Hard surface, grassy area or hard packed snow. Avoid loose dirt, dust, or snow. (The pilot will blow loose dust and snow from the area prior to landing if needed). If available and asphalt road in the near vicinity may be used.
 - Free of overhead obstructions (wires, antennas, poles).
 - Area is clear of debris, large rocks, posts, stumps, vehicles, people, animals and other hazards.
 - Plan for alternate LZ's (Pilot may determine LZ to be unsafe upon arrival).
 - LZ can NOT be in the vicinity to the rigs flare stack, or the Geronimo line anchor.
 - The wind sock and aircraft approach will be deployed upon calling for a medevac.
2. HAZ-MAT- Always inform the pilot and medical crew if the victim was exposed to hazardous material and needs to be decontaminated.
3. Patient must be removed from the hot or dangerous zones. Patients must be decontaminated PRIOR to flight. Patient will not be brought to Landing Zone. Do not move patient until told to do so by EMS, unless life threatening.
4. When the Helicopter is approaching, the Pilot will establish radio contact on the assigned frequency 123.025 with LZ Command/EHS at 30 and 5 minutes out. Describe LZ location, lighting, hazards, and the location of any OVERHEAD wires, obstructions, slope, surface condition, wind direction and estimated speed. Maintain radio contact at all times until helicopter has landed, loaded, and departed the area.
5. Everyone in the landing zone before, during and after the Helicopter lands and departs MUST wear goggles and hearing protection. Hard hats and ball caps are NOT allowed in the vicinity of the Landing Zone.
6. Approach angles over obstacles should be less than 20 degrees.
7. Night LZ's REQUIRE good communications, lighting and alertness.
8. Set up night LZ with secured lights and windsock to show pilot the direction the wind is coming from.
9. Blue perimeter lights shall be constantly lighted while amber flight path lighting shall be strobes.
10. If no other portable lights are available, cross vehicle headlights on low beams, into the wind shining at the center of the LZ. Never shine a light at the helicopter or the pilot
11. Always keep LZ clear of people and other potential hazards upon approach and departure of Helo.
12. Approach the Helicopter from the 2 and 10 O'clock positions only!
13. Always avoid TAIL ROTOR area.
14. Flag off or alert the Pilot via radio of any hazards that may arise upon the helicopter approaching the LZ.

- **Red** and **Yellow** show DANGER zones - DO NOT APPROACH THE HELICOPTER IN THESE AREAS.
- You MUST establish visual contact with the pilot upon approaching the Helicopter.
- Only approach Helicopter from the 10 and 2 o'clock positions once visual contact has been made with the pilot.





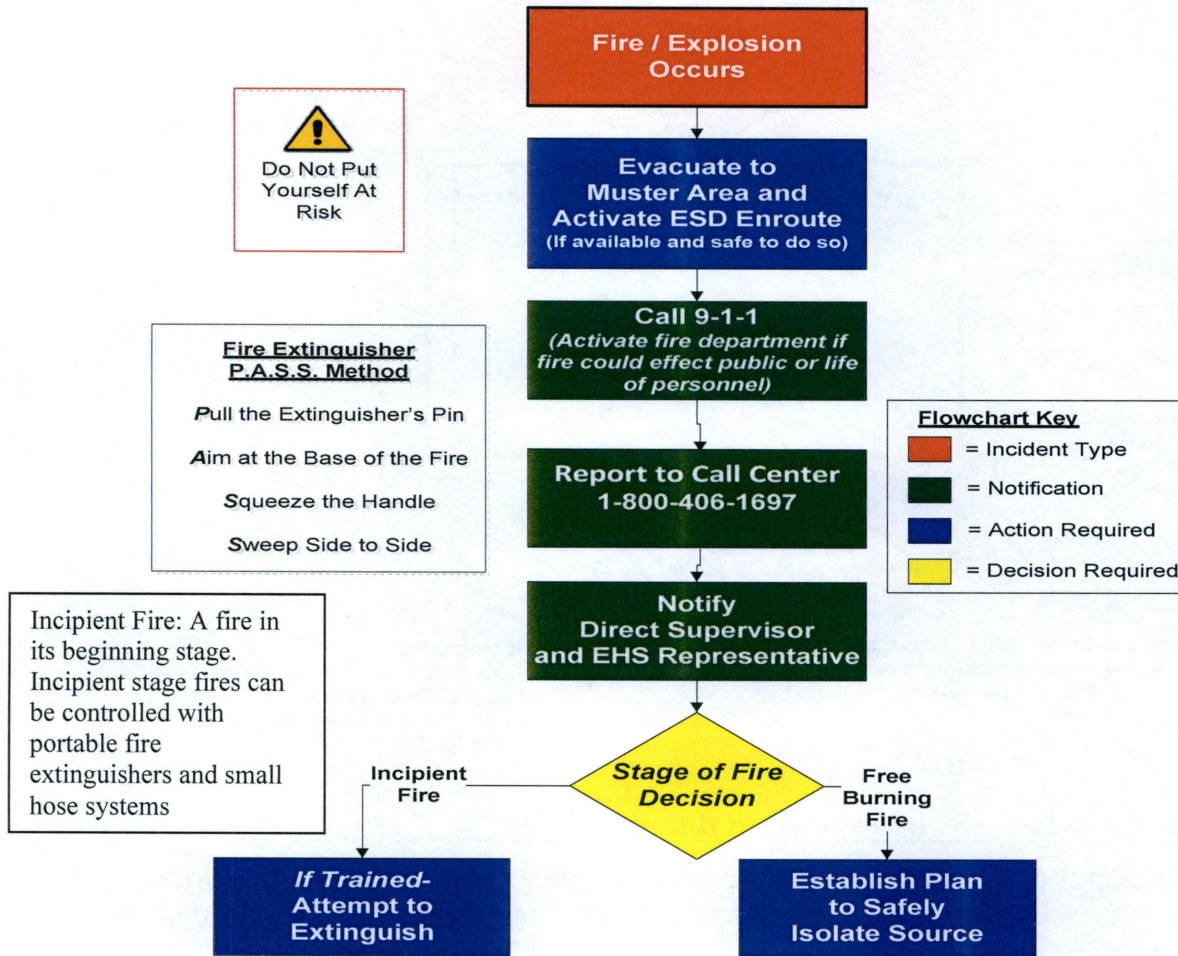
Helicopter Services may be requested directly via 911 by Hess Medics or EMS.

On-Scene Commanders may call Helicopter Services directly using the following numbers: (Only in the event that a Hess Medic is not available or local EMS cannot reach the scene)

- (Minot) North Star Criticair 1-701-857-3000
- (Williston/Dickinson) Valley Med Flight 1-800-828-0168
- (Bismarck & Fargo) Sanford Air Medical 1-800-437-6886

1. Provide your name, agency and call back number.
2. Provide nature of the incident and # of patients (age and approx. weight).
3. Provide GPS Coordinates (Degrees: Minutes: Seconds).
4. Provide Local Weather Conditions.
5. Provide Radio Frequency or Channel for Air to Ground Coms and Name of the On-Scene LZ Coordinator.

**FIGURE 2.3
RESPONSE CHECKLIST – FIRE/EXPLOSION**



- Class A Fire – Wood, Paper, Cloth, Trash
- Class B Fire – Flammable Liquids, Oil, Gas, Grease
- Class C Fire – Energized Wires, Electrical Equipment
- Class D Fire – Combustible Metals

Water Extinguisher

Use On Class A Fires

- Pressurized Water; and
- A Pressure Gauge Is Present.

CO₂ Extinguisher

Use On Class B and Class C Fires

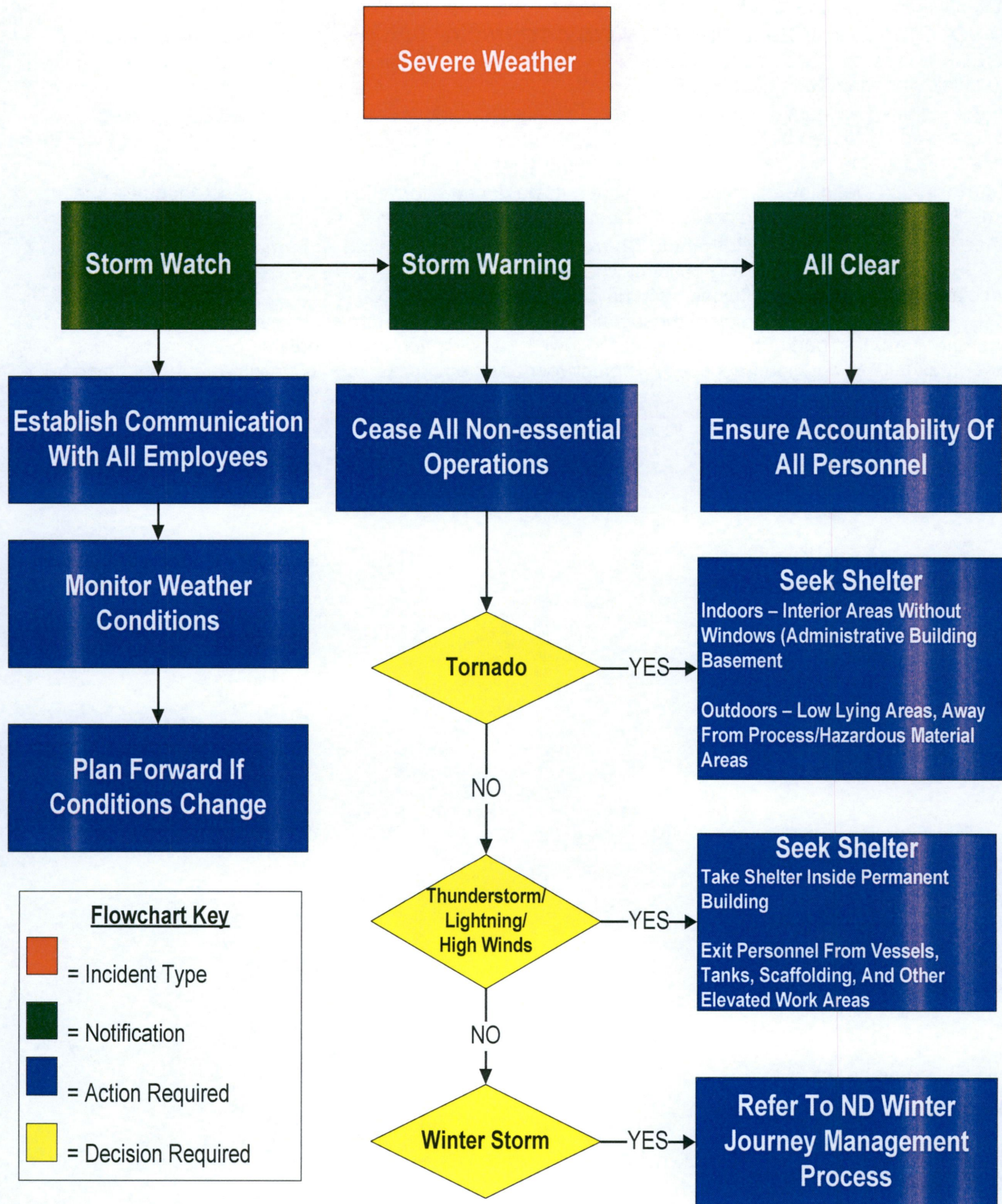
- Has Large, Hard Plastic Nozzle; and
- No Pressure Gauge.

ABC Extinguisher

Use On Class A, Class B, and Class C Fires

- Fine Powder Under Pressure; and
- A Pressure Gauge Is Present.

**FIGURE 2.4
RESPONSE CHECKLIST – SEVERE WEATHER**



Take Shelter!

At Home - Pick a place in the home where family can gather. One basic rule - *AVOID WINDOWS*. The safest place in the home is the interior part of a basement. If there is no basement, go to an inside room, without windows, on the lowest floor (center hallway, bathroom, or closet).

DO NOT STAY IN A MOBILE HOME DURING A TORNADO. Plan ahead and go to a nearby building, preferably one with a basement. If there is no shelter nearby, lie flat in the nearest ditch, ravine, or culvert and shield your head with your hands.

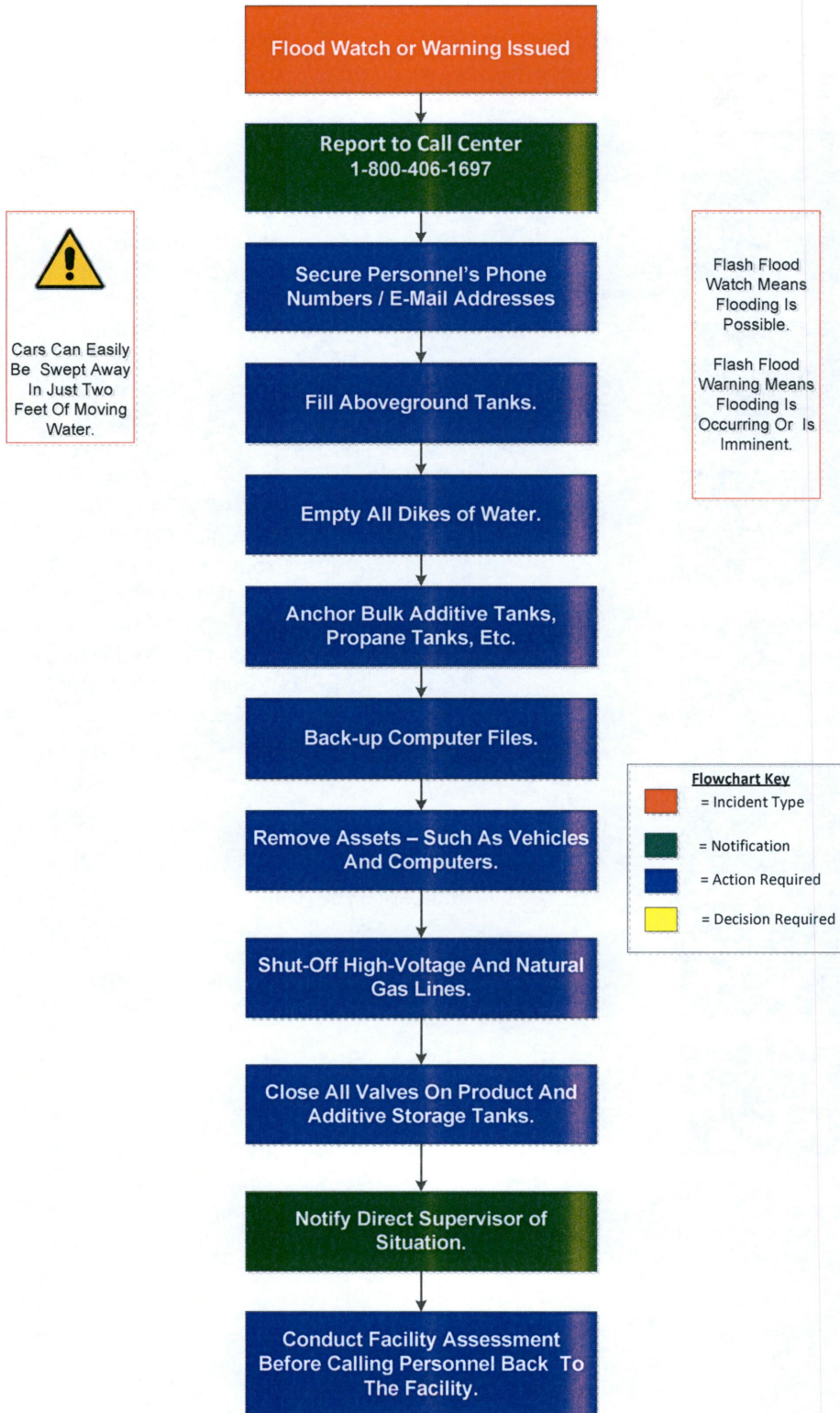
On the Road - The least desirable place to be during a tornado is in a motor vehicle. Cars, buses, and trucks are easily tossed by tornado winds. *DO NOT TRY TO OUTFRAN A TORNADO IN YOUR CAR.* If you see a tornado, stop your vehicle. Do not get under your vehicle.

Outdoors - Do the following if you are caught outside during a tornado and there is no adequate shelter immediately available: - Avoid areas with many trees. - Protect your head with an object or with your arms.

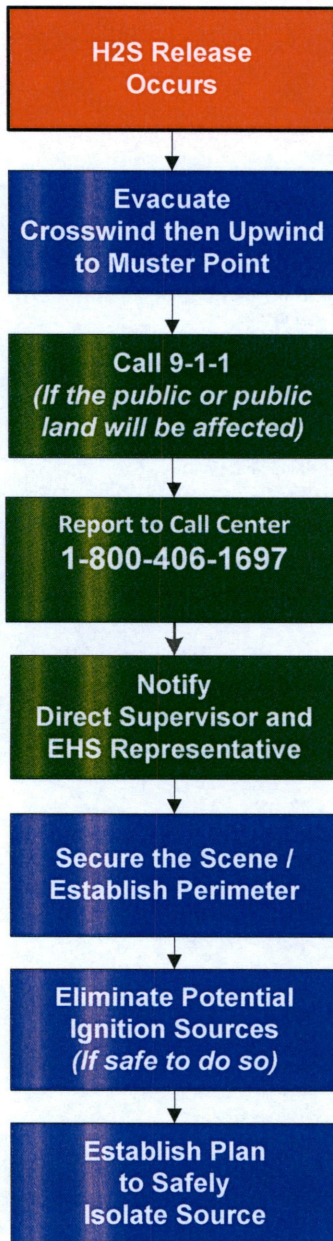
Office Buildings, Schools, Hospitals, Churches, and Other Public Buildings - Extra care is required in offices, schools, hospitals, or any building where a large group of people is concentrated in a small area. The exterior walls of such buildings often have large windows.


Do the following if you are in any of these buildings: 1) Move away from windows and glass doorways. 2) Go to the innermost part of the building on the lowest possible floor. 3) Do not use elevators because the power may fail, leaving you trapped. 4) Protect your head and make yourself as small a target as possible by crouching down.

**FIGURE 2.5
RESPONSE CHECKLIST – FLOOD**



**FIGURE 2.6
RESPONSE CHECKLIST – HYDROGEN SULFIDE (H₂S)**





H₂S Is Extremely Flammable and Toxic.

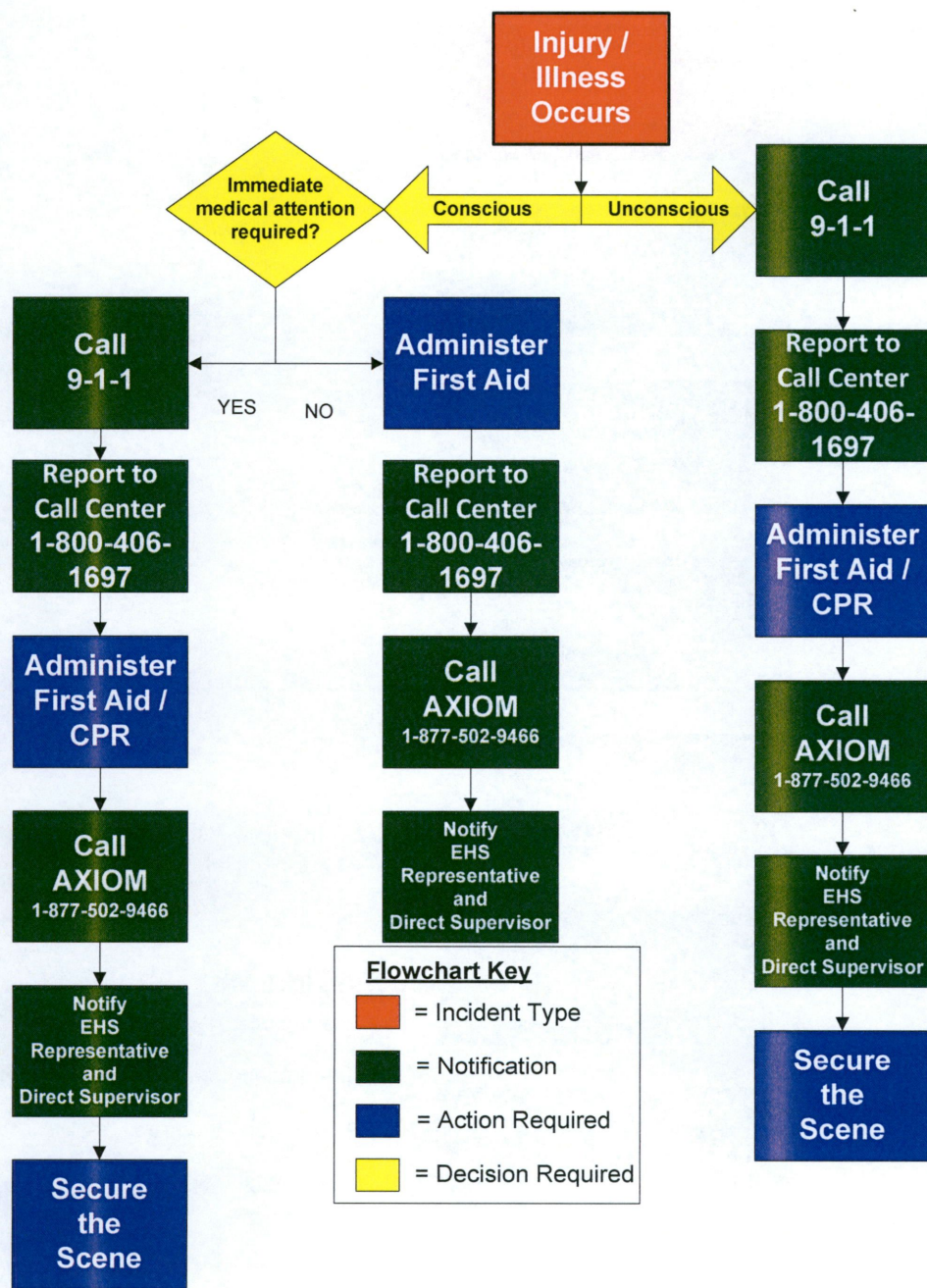
Do Not Use The Mouth-To-Mouth Method If A Victim Ingested or Inhaled H₂S; Give Artificial Respiration With The Aid Of A Pocket Mask Equipped With A One-Way Valve Or Other Proper Respiratory Medical Device.

All Equipment Used When Handling H₂S Must Be Grounded.

Flowchart Key

- = Incident Type
- = Notification
- = Action Required
- = Decision Required

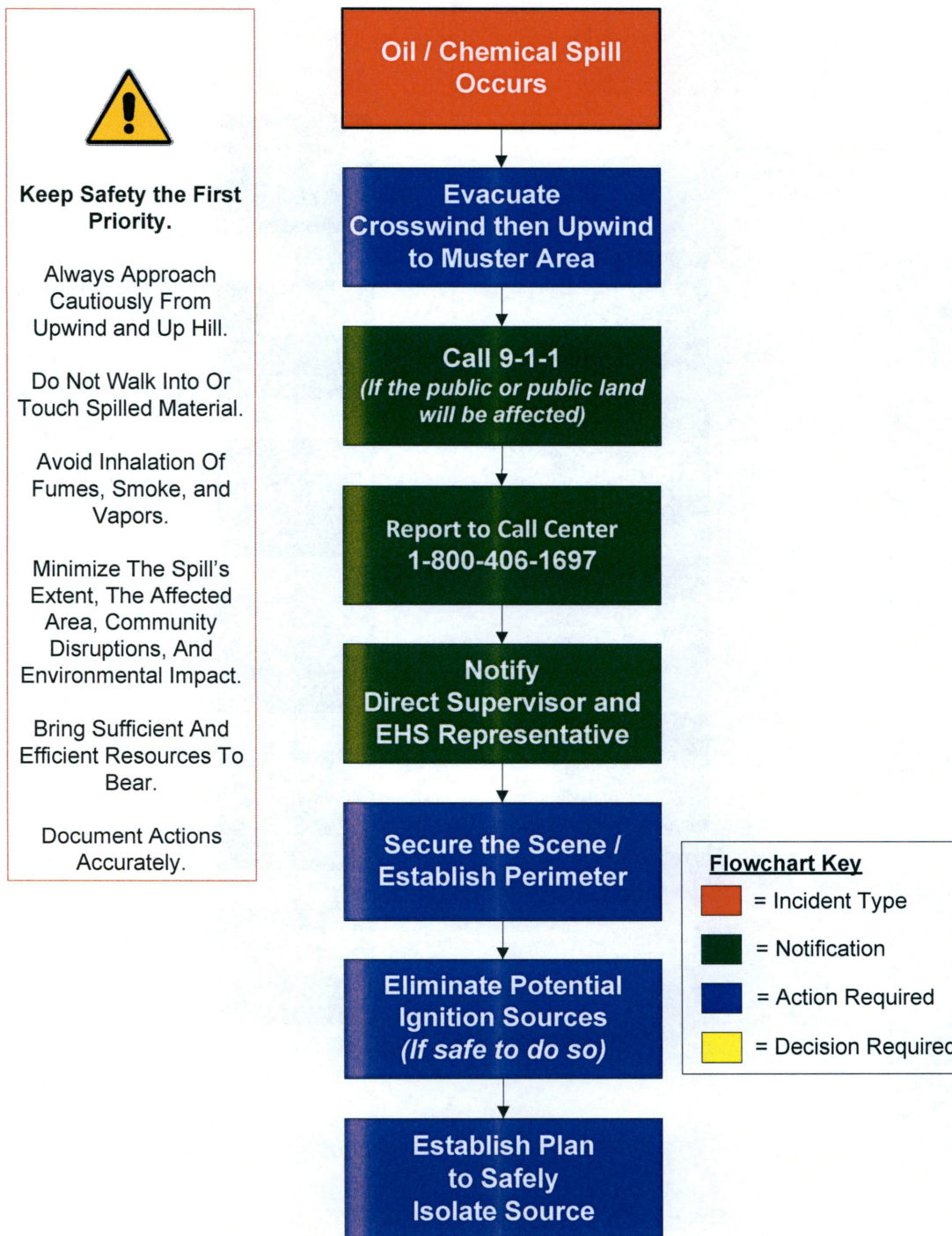
**FIGURE 2.7
RESPONSE CHECKLIST – INJURY / ILLNESS**



IF THE INJURY IS SERIOUS:

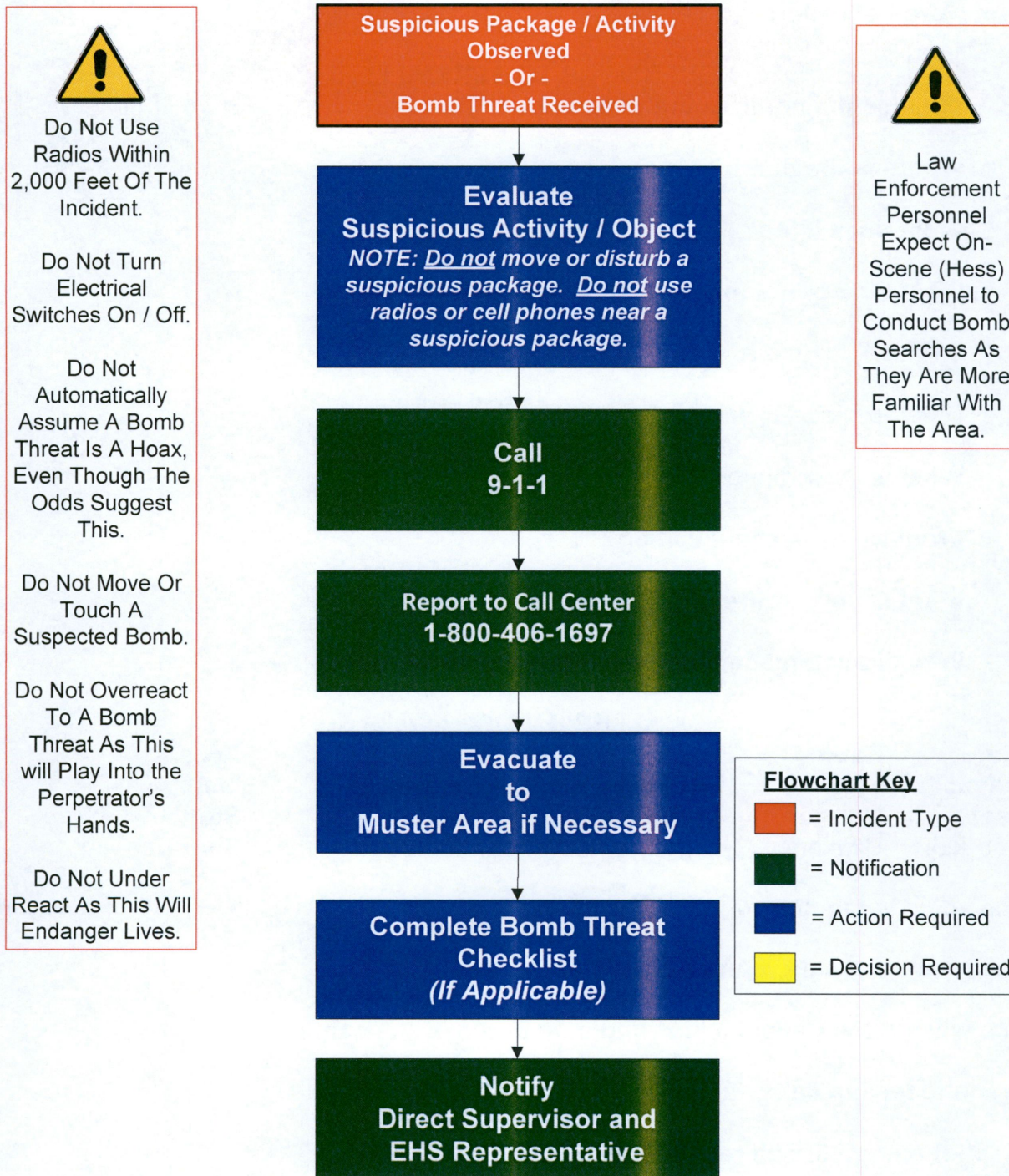
- DO NOT Move Victim Unless Surrounding Conditions are Life Threatening;
- CONTROL Bleeding;
- ENSURE Adequate Breathing;
- KEEP Injured Person Lying Down;
- GIVE NOTHING BY MOUTH;
- PREVENT Loss of Body Heat; and
- PRIORITIES ARE:
 - [1] RESCUE,
 - [2] STABILIZE, and
 - [3] TRANSPORT to Medical Facility.

**FIGURE 2.8
RESPONSE CHECKLIST – OIL / CHEMICAL SPILL**



For spill incidents involving Hess ND jurisdictionally regulated (PHMSA) pipeline systems/segments reference the Hess ND Operations & Maintenance Manual for Hazardous Liquid Pipelines found at: <http://hessconnect.ihess.com/sites/unconventionals/ubuehs/DOT%20Documents/Forms/AllItems.aspx?RootFolder=%2Fsites%2Funconventionals%2Fubuehs%2FDOT%20Documents%2F11%20Documents%20and%20Data%20Control%2FSWP%2F01%20HESS%20%2D%20OM%20Books%20in%20PDF%2FHAZ%20LIQ%20PL%2FO%5FM%20Manual&InitialTabId=Ribbon%2EDocument&VisibilityContext=WSSTabPersistence>

**FIGURE 2.9
RESPONSE CHECKLIST – SECURITY**



BOMB THREAT CHECKLIST

Exact date & time of the call:

Time call ended:

Exact words of caller:

QUESTIONS TO ASK CALLER:

1. When is the bomb going to explode?
2. Where is the bomb?
3. What does it look like?
4. What kind of bomb is it?
5. What will cause it to explode?
6. Did you place the bomb?
7. What is your name?
8. From where are you calling?
9. What is your address?
10. Why did you place the bomb?

CALLER'S VOICE (circle)

Calm	Rapid	Deep	Angry	Accent
Excited	Slow	Squeaky	Sincere	Lisp
Nasal	Normal	Crying	Loud	Stutter
Stressed	Broken	Giggling	Disguised	Slurred

If the voice is familiar, whom did it sound like?

Was there any background noise?

What was on the Caller ID (may indicate origin of the call)?

Person receiving call:

Telephone number call received at:

Was the call recorded?

Reported call immediately to supervision/management:

FIGURE 2.10
RESPONSE CHECKLIST – ACROLEIN – BLDU Central Facility

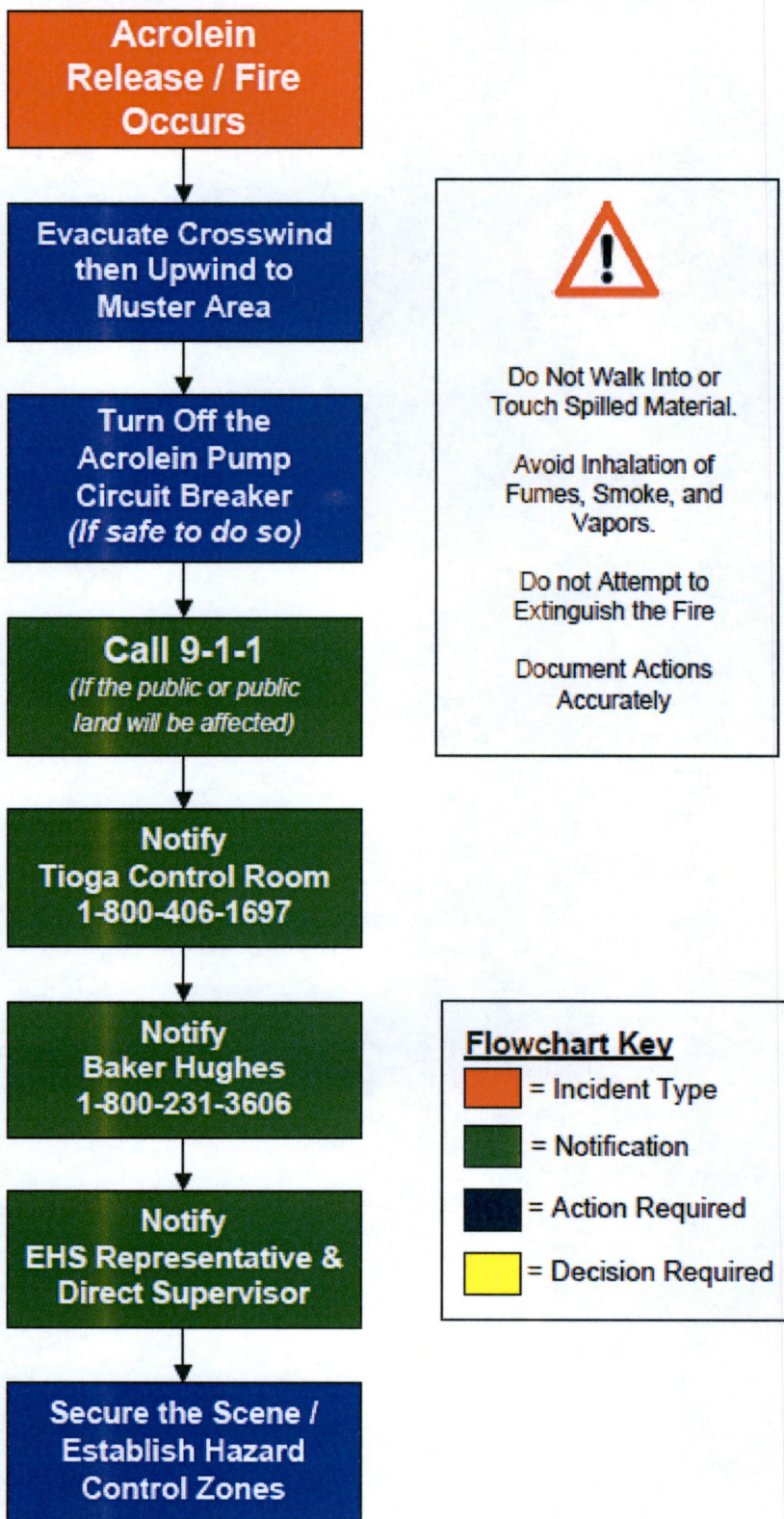


FIGURE 2.10 CONTINUED
BLDU Central Facility SITE LAYOUT

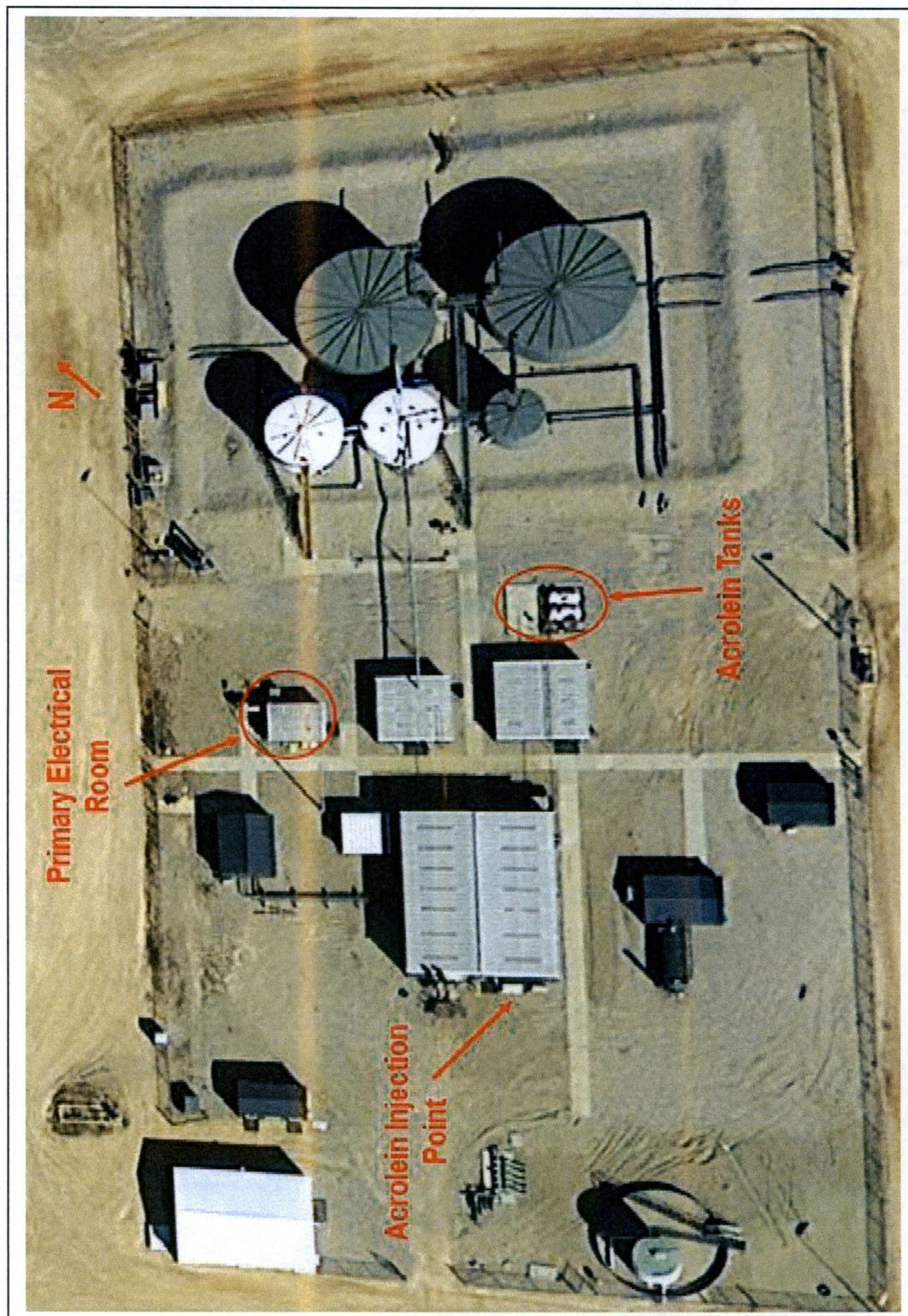
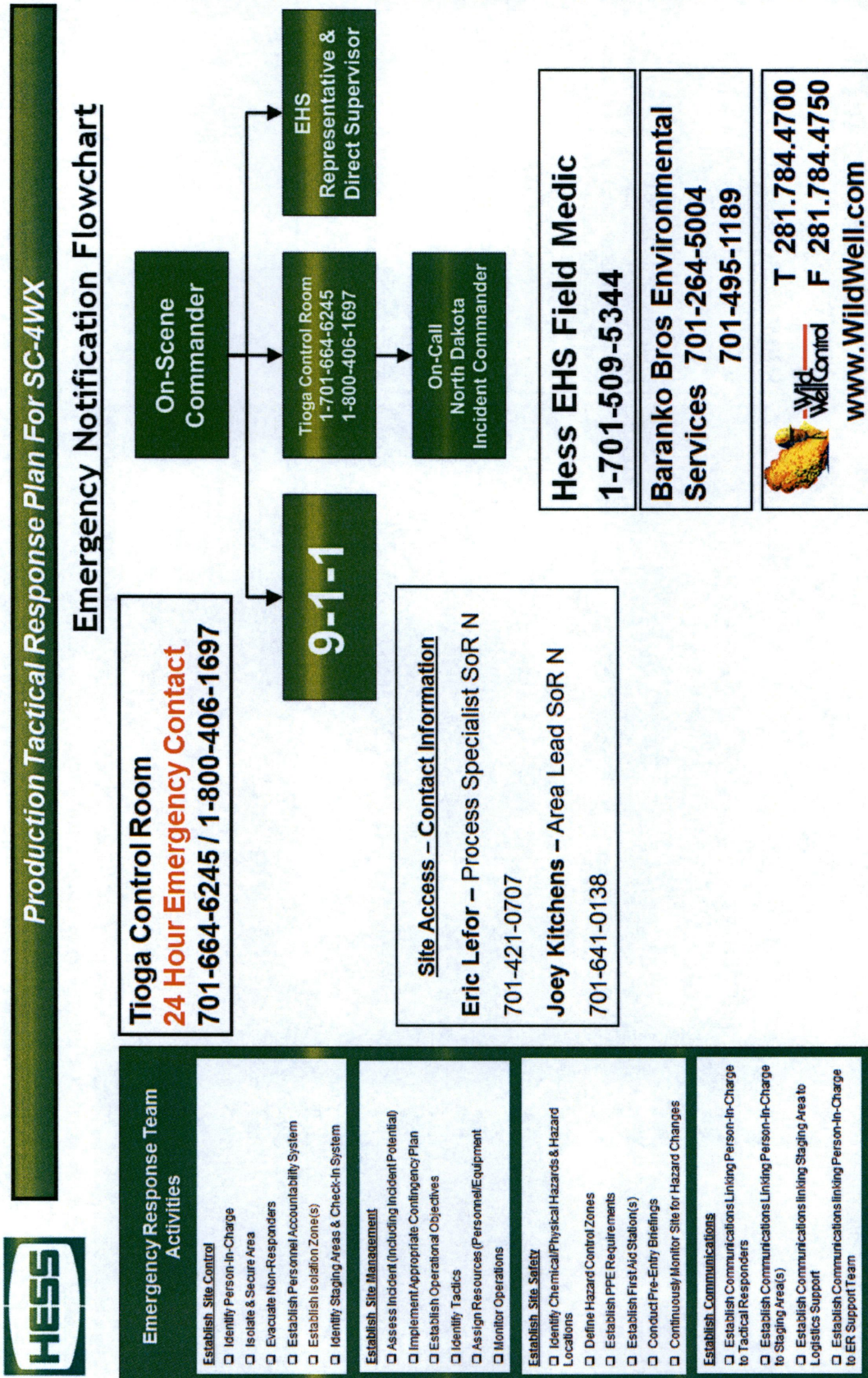


FIGURE 2.11
PRODUCTION TACTICAL RESPONSE PLAN – SOR SC-4WX



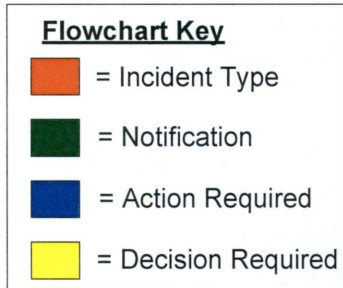
FIGURE 2.11 CONTINUED
 PRODUCTION TACTICAL RESPONSE PLAN – SOR SC-4WX



**FIGURE 2.12
RESPONSE CHECKLIST – WELL CONTROL BLOWOUT**



REFERENCE HESS ND REGIONAL WELL CONTAINMENT PLAN
http://ehs.hcportal.ihess.com/systems/emergency/layouts/15/WopiFrame.aspx?sourcedoc=/systems/emergency/Plans/Onshore/North%20Dakota/Emergency%20Response%20Plans/HESS-North_Dakota_WCERP_Rev-0_2013-090_20140109.pdf&action=default



WELL KILL DATA SHEET

Kill Plan Worksheet	
Rig Name:	
Activity Prior to Blowout	
Well Type Weather Conditions	
Location Information	
Current Well Condition	
Well site Debris	
Location Description	
Fryburg Area Details	
Terrain Description	
Population Impact	
Location Hazards	
Water Supply	
Affected Operations	
Environmental Concerns	
B.O.P. - Production Tree - Wellhead Information	
Exit Point	
Flow/Fire Details	
Wellhead Size Pressure Rating	
Wellhead Status/Configuration	
Production Tree Size Pressure Rating	
Tree Description	
BOP Bore Size Pressure Rating	
BOP Status/Configuration	

WELL KILL DATA SHEET (Cont'd)

Kill Plan Worksheet (Cont'd)	
Tubular Data / Wellbore Geometry	
Casing (Schematic or Description)	
Drillstring / Workstring (Schematic or Description)	
Open Hole	
OD MD TVD Angle DLS	
Lithology/Zones	
Shoe / Liner Top Tests	
Bit information	
Bit Depth (MD) No. of Jets	
Bit Type Size of Jets (32nd)	
Downhole Tool / BHA Information	
Reservoir Data	
Reservoir Depth	
Bottom Hole Pressure	
Bottom Hole Temperature	
Reservoir Thickness	
Estimated Flow	
GOR	
GWR	
Personnel Requested	
Equipment / Materials Requested	

3.1 INTERNAL NOTIFICATIONS

The following internal notifications should be made for each emergency incident to the extent that the incident demands (telephone reference is provided in Figure 3.1 – 3.6). In no event shall notification be delayed because the immediate supervisor is inaccessible. Authorization is given to bypass management levels if necessary to provide timely notification to appropriate management. The typical internal notification responsibilities for each person potentially involved in the initial response are shown in the diagram below.

More detail on the process for escalating events can be found in the North Dakota Incident Management Plan (IMP)

<http://houshare.ihess.com/sites/emergencycontacts/Plans/Forms/AllItems.aspx?RootFolder=%2Fsites%2Femergencycontacts%2FPlans%2FUnconventionals%2FNorth%20Dakota>

FIGURE 3.1

Base Production Legacy Internal Notifications

POSITION/TITLE	NAME	OFFICE	CELL
Tioga Office Complex Control Room		1-800-406-1697	
Tioga Gas Plant Control Room		701-664-6530	
AXIOM Medical Consulting		1-877-502-9466	
Hess Field Medic		701-509-5344	
Legacy Area Lead	Jim Wilson	701-420-6993	701-509-5033
Sr Process Spec	Mark Haag	701-420-6986	701-389-7153
Logisitics Spec	Jamie Jorstad	701-664-6318	701-648-9710
Sr I&E Tech	Daniel Rios		701-334-2957
Ground Disturbance Process Spec	Benji Schmidt	701-664-6518	701-421-2184
EHS	Emily McKinney	701-664-6278	701-240-8563
EHS	Phil Blackaby		701-509-2802
EHS	Scott Plavney		832-205-4924
EHS	Courtney Wilhelm	701-664-6400	701-334-0176

FIGURE 3.2
Base Production North of the River (NOR) Internal Notifications

POSITION/TITLE	NAME	OFFICE	CELL
Tioga Office Complex Control Room		1-800-406-1697	
Tioga Gas Plant Control Room		701-664-6530	
AXIOM Medical Consulting		1-877-502-9466	
Hess Field Medic		701-509-5344	
NOR Ops Manager	Sean Werner	701-664-6230	432-209-1089
NOR Ops Process Specialist	Douglas Perdue	701-664-6319	701-641-0085
NOR West Area Lead	Caleb Eide	701-664-6208	701-641-0759
West Process Spec	Mark Donnelly	701-664-6317	701-339-7475
West Logistics Spec	Kyle Weyrauch	701-664-6334	701-641-3072
West Sr I&E Tech	Casey Brunner		701-421-6817
NOR East Area Lead	Jeremy Daugherty		
East Process Spec	Ryan Enget	701-664-6327	701-641-0198
East Logistics Spec			
East Sr I&E Tech	Ryan Derheim		701-339-6941
NOR Central Area Lead	Thomas Dransfield	701-420-7059	832-205-4760
Central Process Spec	Jubal Jarmin	701-664-6321	701-648-9766
Central Logistics Spec	Charles Junas	701-664-6470	701-339-9641
Central Sr I&E Tech	William Charles		701-339-8324
Ground Disturbance Process Spec	Benji Schmidt	701-664-6518	701-421-2184
EHS	Emily McKinney	701-664-6278	701-240-8563
EHS	Phil Blackaby		701-509-2802
EHS	Scott Plavney		832-205-4924
EHS	Courtney Wilhelm	701-664-6400	701-334-0176

Reference the North Dakota Incident Management Plan (IMP) for an up-to-date listing of Incident Management Team (IMT) and Emergency Response Team (ERT) members.

FIGURE 3.3
Base Production South of the River (SOR) Internal Notifications

POSITION/TITLE	NAME	OFFICE	CELL
Tioga Office Complex Control Room		1-800-406-1697	
Tioga Gas Plant Control Room		701-664-6530	
AXIOM Medical Consulting		1-877-502-9466	
Hess Field Medic		701-509-5344	
SOR Ops Manager	Stacey Nachbaur	701-420-6989	701-580-1658
SOR Ops Process Specialist	Curtis Fuchs	701-675-2258	701-290-8232
SOR South Area Lead	Cody Dukart	701-764-8411	701-339-9000
South Process Spec	JoAnn Davis	701-664-6284	701-648-9992
South Logistics Spec	Dustin Otto	701-764-8411	701-641-0659
Sr I&E Tech	Parker Paul		701-339-9587
SOR North Area Lead	Joey Kitchens	701-664-6214	701-641-0138
North Process Spec	Eric Lefor	701-675-2258	701-421-0707
North Logistics Spec	Mark Deaver		701-339-1340
Sr I&E Tech	John Weaver		701-389-2362
Ground Disturbance Process Spec	Benji Schmidt	701-664-6518	701-421-2184
EHS	Jason Dalen		701-339-2732
EHS	Andy Larsen		701-240-6877
EHS	James Barsness		701-339-8607
EHS	Dan Usher	701-664-6273	701-389-2666

Reference the North Dakota Incident Management Plan (IMP) for an up-to-date listing of Incident Management Team (IMT) and Emergency Response Team (ERT) members.

**FIGURE 3.4
.F Construction Internal Notifications**

POSITION/TITLE	NAME	OFFICE	CELL
Tioga Office Complex Control Room		1-800-406-1697	
Tioga Gas Plant Control Room		701-664-6530	
AXIOM Medical Consulting		1-877-502-9466	
Hess Field Medic		701-509-5344	
.F Manager	Eric Rolli	701-420-6925	701-578-5919
Construction Supt	Russell Gifford	701-420-7041	701-340-1287
Construction Lead	Jeff Sims	701-675-8122	701-240-8095
Construction Lead	Jeff Herrington	701-675-8122	701-421-8012
Ground Disturbance Process Spec	Benji Schmidt	701-664-6518	701-421-2184
EHS	Rob Bates	701-420-7091	701-421-1692
EHS	Matt Woehl		701-389-7038
EHS	Paul Hebert		701-389-2666

Reference the North Dakota Incident Management Plan (IMP) for an up-to-date listing of Incident Management Team (IMT) and Emergency Response Team (ERT) members.

FIGURE 3.5
Completions Internal Notifications

POSITION/TITLE	NAME	OFFICE	CELL
Tioga Office Complex Control Room		1-800-406-1697	
Tioga Gas Plant Control Room		701-664-6530	
AXIOM Medical Consulting		1-877-502-9466	
Hess Field Medic		701-509-5344	
D&C Director	Ryan Lamothe	713-496-5253	281-781-9243
D&C Manager	Willie Thompson	713-496-4159	281-216-8244
Frac Supt	Marvin Romkee	701-420-6943	701-641-0777
Frac Supt	Bill Sem	701-420-6943	701-570-1389
Flowback Supervisor	Kirk Schaub	701-420-7115	701-509-7434
Flowback Supervisor	Louis Muschalek	701-420-7115	832-726-4767
Water Management	Greg Forseth	701-420-7107	701-389-8180
Water Management	Gilbert Krane	701-420-7107	701-389-8108
EHS	Josh Blackaby	701-420-6995	701-340-8993
EHS	Jeremy Wilson		701-509-5010
EHS	Ron Depetro		701-509-5010

Reference the North Dakota Incident Management Plan (IMP) for an up-to-date listing of Incident Management Team (IMT) and Emergency Response Team (ERT) members.

FIGURE 3.6
Drilling Operations Internal Notifications

POSITION/TITLE	NAME	OFFICE	CELL
Tioga Office Complex Control Room		1-800-406-1697	
Tioga Gas Plant Control Room		701-664-6530	
AXIOM Medical Consulting		1-877-502-9466	
Hess Field Medic		701-509-5344	
D&C Director	Ryan Lamothe	713-496-5253	281-781-9243
D&C Manager	Willie Thompson	713-496-4159	281-216-8244
Drilling Supt.	Tony Piercey		713-299-7381
Drilling Supt.	Mike Roberts		713-438-5157
Drilling Supt.	Jim Stover	701-420-6923	701-509-2042
Drilling Supervisor	Will Slagle		701-641-6578
EHS	Josh Blackaby	701-420-6995	701-340-8993
EHS Field Lead – Rotator	Eddie Beckham		701-580-1718
EHS Field Lead - Rotator	James Pethtel		701-580-1718

Reference the North Dakota Incident Management Plan (IMP) for an up-to-date listing of Incident Management Team (IMT) and Emergency Response Team (ERT) members.

3.2 EXTERNAL NOTIFICATIONS

The following external notification section outlines the requirements for contacting agencies and parties outside of Hess. Also included in this section are the phone numbers for each contact. The appropriate tables for each of the respective categories are as follows:

- Hess Agency Notification Matrix Figure 3.7
- Notifications (Federal/State/Local) Figure 3.8
- External Resources (Contractors) Figure 3.9

Those reporting a release to regulatory agencies should observe the following guidelines:

GENERAL GUIDELINES WHEN CONTACTING AGENCIES


- Do Not include information that has not been verified;
- Do Not speculate as to cause of the incident or make any acknowledgment of liability;
- Document persons / agencies / date / time notified and the content of the items discussed;
- It is not necessary to gather all the information before making the initial notification to the regulatory agencies;
- Provide as much verified information as possible; and
- Provide periodic follow-up notifications to authorities on status or response actions taken, the release's location if it has changed, and (if applicable) advice on health risks.

FIGURE 3.7
AGENCY NOTIFICATION MATRIX

North Dakota: Drilling, Completions, and Operations Regulatory Required Notifications

Environmental Incident Conditions Requiring Regulatory Notification	Regulatory Limits / Reportable Quantity (IES)	National Response Center (CERCLA)	Bureau of Land Management	LEPC/SERC (EPCRA)	NDDOH Department of Health	NDIC Industrial Commission	County Sheriff	ND Highway Patrol	Land Owner	AHC Contact
Upsets / Malfunctions										
(1) Venting (Non-Flare Gas Releases)	(1a) Hydrogen Sulfide From Venting Produced Gas	No	No	Yes If > 100 Lbs	Yes If > 100 Lbs	Yes If > 100 Lbs	Notes 2 ft 3	Note 4	No	*
	(1b) Hydrogen Sulfide From Venting Other Process Sources	Yes If > 100 Lbs	No	Yes If > 100 Lbs	Yes If > 100 Lbs	Yes If > 100 Lbs	Notes 2 ft 3	Note 4	No	*
	(1c) Venting Produced Gas	No	Note 5	No	Note 2	Note 2	Notes 2 ft 3	Note 4	No	*
	(1d) BETX (Benzene) From Venting Produced Gas	No	No	Yes If > 10 Lbs	Yes If > 10 Lbs	Yes If > 10 Lbs	Notes 2 ft 3	Note 4	No	*
(2) Emergency Flare	(1e) BETX (Benzene) From Venting Process Sources	Yes If > 10 Lbs	No	Yes If > 10 Lbs	Yes If > 10 Lbs	Yes If > 10 Lbs	Notes 2 ft 3	Note 4	No	*
	(2a) 60% Opacity for 6 min./hr. > 20% Opacity after 6 min.	No	No	No	Yes	No	No	No	No	*
(2) Emergency Flare	(2b) Sulfur Dioxide Emissions	No	No	Yes If > 500 Lbs	Yes If > 500 Lbs	Note 1	Notes 2 ft 3	Note 4	No	*
	Maintenance / Scheduled - Unscheduled Activities									
(1) Planned Maintenance of Pollution Control	(1a) Twenty-four (24) hours prior telephone notice	No	Yes	No	Yes	Yes	No	No	No	No
Spills / Releases										
(1) Triethylene	(1a) Any quantity on site	No	Note 5	No	**	Yes	Note 2	No	No	*
	(1b) Any quantity on site	No	Note 5	No	**	Yes	Note 2	Note 4	Note 6	*
(2) Methanol	(2a) > 5000 lbs. on site	Yes	Note 5	Yes	**	Yes	Note 2	No	No	*
	(2b) > 5000 lbs. off site	Yes	Note 5	Yes	**	Yes	Note 2	Note 4	Note 6	*
(3) Crude Oil/Petroleum	(3a) Any quantity in water	Yes	Note 5	Yes	Yes	Yes	Note 2	No	No	*
	(3b) 1 BBL or more, OR any off site	No	Note 5	No	**	Yes	Note 2	Note 4	Note 6	*
(4) Produced/Salt Water	(4a) Any quantity in water.	No	Note 5	No	Yes	Yes	Note 2	No	No	*
	(4b) 1 BBL or more, OR any off site	No	Note 5	No	**	Yes	Note 2	Note 4	Note 6	*
(5) Miscellaneous Production Chemicals	Miscellaneous production and other proprietary chemicals that are stored at sites, whether in drums or in bulk, may require Regulatory Agency notification if accidentally spilled / released. Consult each chemical's MSDS for reportable quantities of CERCLA or SARA substances, and contact the Environmental Department for assistance in determining if a Regulatory Agency should be notified.									
<p>NOTES:</p> <ul style="list-style-type: none"> 1) If flaring for an extended period of time. 2) Immediate telephonic notice of any release that may be hazardous to the public. 3) Sheriff will contact local fire department if necessary. 4) Notify if release may require control of state highway. 5) If on BLM lands (BLM is surface management agency) <ul style="list-style-type: none"> a. As soon as practical within 24 hours for > 100 bbls. Of oil, saltwater, or toxic liquid, or any combination, and venting > 500 MCF gas. <p>6) Notify landowner if spill/release migrates off-site *) Notification to E & P Environmental Department Required as soon as possible after incident discovery. **) No notification required unless spill/release has or is "likely" to impact waters (ground and surface) of the state. NDAC 33-16-02.1-11.</p>										

**FIGURE 3.8
EXTERNAL NOTIFICATION REFERENCES**

REQUIRED NOTIFICATIONS	
NATIONAL RESPONSE CENTER	
c/o United States Coast Guard (CG-3RPF-2) 2100 2 nd Street Southwest - Room 2111-B Washington, D.C. 20593-0001	800-424-8802 (24 Hrs) 202-267-2675 (24 Hrs) 202-267-1322 (Fax)
<p>REPORTING REQUIREMENTS TYPE: All spills that impact or threaten navigable water OR for spills or releases of hazardous substances that meet or exceed their RQ. VERBAL: Immediate notification required. WRITTEN: As requested</p>	
OCCUPATIONAL SAFETY AND HEALTH ADMINISTRATION (OSHA)	
200 Constitution Avenue Washington, D.C. 20210	800-321-6742
<p>REPORTING REQUIREMENTS TYPE: Fatality from a work related incident or the inpatient hospitalization of three or more employees as a result of a work related incident. VERBAL: Immediately. WRITTEN: As requested</p>	
	
Department of Transportation / NRC	800-424-8802
<p><i>The Office of Pipeline Safety ("OPS") requires an accident report for each failure in a pipeline system in which there is a release of a hazardous liquid, including oil, which results in <u>any</u> of the following:</i></p> <ul style="list-style-type: none"> (a) Explosion or fire not intentionally set by the operator. (b) Release of 5 gallons or more of hazardous liquid, except that no report is required for a release of less than 5 barrels resulting from a pipeline maintenance activity if the release is: <ul style="list-style-type: none"> (1) Not otherwise reportable under Part 195.50 (i.e. a release resulting in an explosion or fire, death of a person, personal injury necessitating hospitalization or estimated property damage in excess of \$50,000); (2) Not a release resulting in pollution of any stream, river, lake, reservoir, or other similar body of water that violated applicable water quality standards, caused a discoloration of the surface of the water or adjoining shoreline, or deposited a sludge or emulsion beneath the surface of the water or upon adjoining shorelines; (3) Confined to company property or pipeline right-of-way; and (4) Cleaned up promptly. (c) Death of any person. (d) Personal injury necessitating hospitalization. (e) Estimated property damage, including cost of clean-up and recovery, value of lost product, and damage to the property of the operator or others, or both, exceeding \$50,000. See 49 C.F.R. § 195.50. <p>For spill incidents involving Hess ND jurisdictionally regulated (PHMSA) pipeline systems/segments reference the Hess ND Operations & Maintenance Manual for Hazardous Liquid Pipelines found at: http://hessconnect.ihess.com/sites/unconventionals/ubuehs/DOT%20Documents/Forms/AllItems.aspx?RootFolder=%2Fsites%2Funconventionals%2Fubuehs%2FDOT%20Documents%2F11%20Documents%20and%20Data%20Control%2FSWP%2F01%20HESS%20%2D%20OM%20Books%20in%20PDF%2FHAZ%20LIQ%20PL%2FO%25FM%20Manual&InitialTabId=Ribbon%2EDocument&VisibilityContext=WSSTabPersistence</p>	

FEDERAL

**FIGURE 3.8 (Cont'd)
EXTERNAL NOTIFICATION REFERENCES**

FEDERAL AGENCY CONTACTS			
Agency / Entity	Phone	Alternate	F
National Response Center (USCG) c/o United States Coast Guard (CG-5335) - Stop Washington, DC 20593	800-424-8802	202-267-2675	202-267-1322
US Environmental Protection Agency EPA Region VIII Denver, CO	800-227-8914	303-312-6312	
OSHA Region VIII Area Office Bismarck, ND	701-250-4521		701-250-4520
Department of Transportation, Region VIII Bismarck, ND 58501	701-250-4324	701-250-4389	
US Forest Service Dickinson, ND	701-225-5151		
US Army Corps of Engineers Williston, ND	701-572-6494		
Bureau of Land Management Dickinson, ND	701-225-9148		

FEDERAL

ND STATE AGENCY CONTACTS			
Agency / Entity	Phone	Alterna	Fax
North Dakota Division of Emergency Management Bismarck	701-328-8100		701-328-8181
ND Department of Transportation Bismarck	General Information 701-328-	1-855-637-6237	
ND DOT District Offices Dickinson Minot Williston	Operational Issues 701-227-6500 701-857-6925 701-774-2700	District Addresses and Map	
North Dakota Fish and Game Bismarck	701-328-6300		
North Dakota Industrial Commission Bismarck	701-328-8020		701-328-8022
North Dakota State Dept. of Health- Water Quality Bismarck	701-328-5210		
North Dakota Highway Patrol Bismarck	701-328-2455		701-328-1717

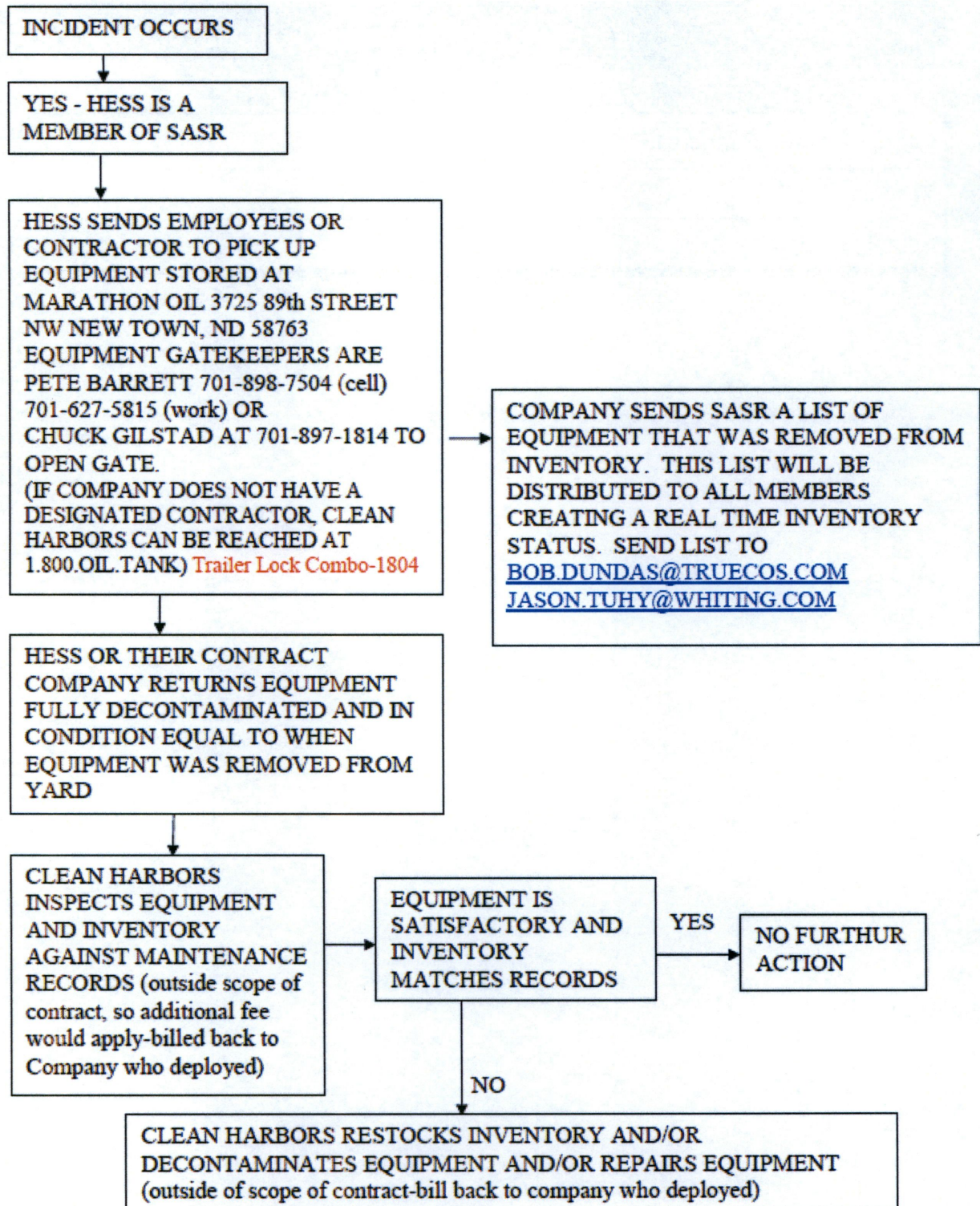
**FIGURE 3.9
OTHER RESOURCES**

HAZMAT INFORMATION RESOURCES			
COMPANY	SERVICE	LOCATION	TELEPHONE
CHEMTREC	Hazmat Guidance	USA	(800) 424-9300
WELL CONTROL RESOURCES			
COMPANY	SERVICE	LOCATION	TELEPHONE
Boots & Coots Services	Well Control	Houston, TX	(281) 931-8884 (800) 256-9688
Wild Well Control, Inc.	Well Control	Houston, TX	(281) 784-4700
OIL SPILL RESPONSE ORGANIZATIONS			
Contractor/Vendor	Phone/Fax	Emergency/24hr	
Clean Harbors 2541 132 nd C Ave Arnegard, ND 58835 www.cleanharbors.com	970-433-5711	Primary 800-645-8265	
Baranko Bros – Environmental Services	Office: 701-483-5868 Cell: 701-495-1189	Primary 701-264-5004	
EarthMovers/Strata	701-852-4560	800-373-5259	
SWAT Consulting Inc – ND	269-986-5499	866-610-7928	
Power Fuels / NUVERRA	701-842-3610	701-842-3618	
Power Fuels	701-420-2841	701-420-2841	
Power Fuels	701-577-1001	701-577-1001	
Power Fuels	701-628-5151	701-628-5151	
Braun Trucking	701-641-0161	701-641-0161	
SASR Mutual Aid	701-456-7520	701-260-4279	

**FIGURE 3.9 (cont'd)
OTHER RESOURCES**

EXTERNAL PRIVATE STAKEHOLDER		
Contractor/Vendor	Phone/Fax	Emergency/24hr
Energy Transfer Partners LP		1-888-844-8134 1-800-392-1965
Tesoro		1-866-283-7676
Enbridge Pipelines		1888-838-4545

Sakakawea Area Spill Response (SASR) Equipment Call Out Matrix



**FIGURE 3.10
OTHER RESOURCES Cont'd)**

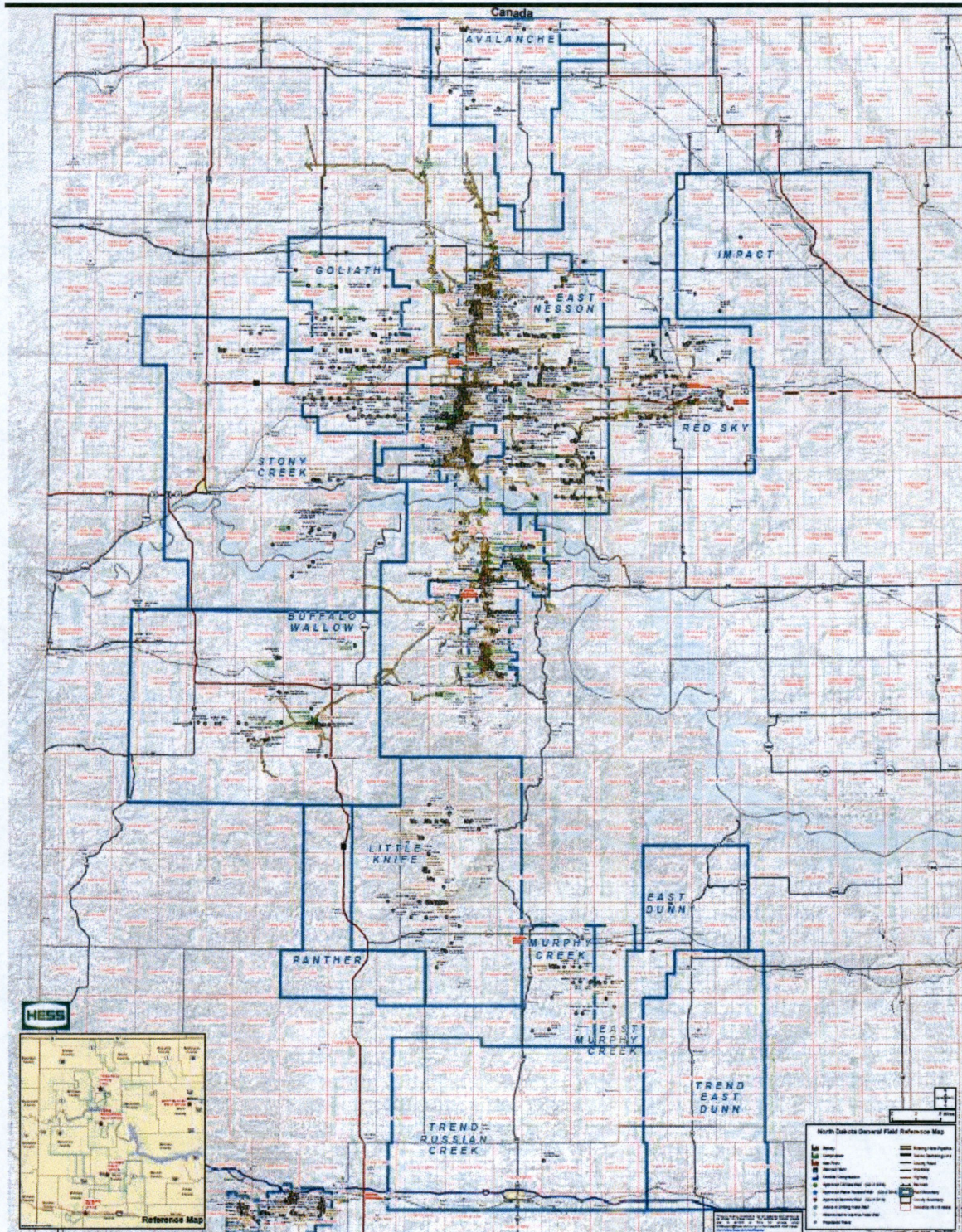
MEDICAL TRANSPORT RESOURCES			
COMPANY	SERVICE	LOCATION	TELEPHONE
911	Ambulance	North Dakota	911

Hospital/Emergency		
Entity	Phone	Fax
Crosby Clinic 112 1st Street Northwest Crosby, ND 58730	701-965-6349	
Kenmare Community Hospital 317 1st Avenue Northwest Kenmare, ND 58746	701-385-4296	
McKenzie County Hospital 516 N Main St, Watford City, ND 58854	701-774-7400	
Mercy Medical Center 1301 15th Avenue West Williston, ND 58801-3896	701-774-7400	
Mountrail Co. Medical 615 6th Street Southeast Stanley, ND 58784-4444	701-628-2424	
St. Andrews Hospital 316 Ohmer Street Bottineau, ND 58318	701-228-9300	701-228-9384
St. Joseph's Hospital 30 West Seventh Street Dickinson, ND 58601	701-456-4000	
St. Luke's Hospital) 702 1st Street South West Crosby, ND 58730	701-965-6384	
Tioga Medical Center 810 Welo Street Tioga, ND 58852	701-664-3305	701-664-2240
Trinity Community Clinic (604 1st Street North New Town, ND 58763	701-627-2990	
Trinity Medical Center 1 Burdick Expressway West Minot, ND 58701	Ask for IC or Administrator On-Call: 701-857-5000	

**FIGURE 3.10
OTHER RESOURCES Cont'd)**

Contractors		
Entity	Type of Business	Phone
Almers	General Pipeline Services - Construction	701-664-3429
Baranko	Blading & Excavating Services	701-290-0082
Borsheim Crane	Crane Services	701-572-6301
Braun Intertec Corp	NDE Services/Radiological Services	701-255-7180
C&J Xray	X-RAY Inspection & Stress Relieving	701-258-3881
Cascade	Tank Rental – Transportation	970-361-1447
Central Trenching Inc	Daylighting & Hydrovac	701-837-8378
Chippewa	Safety Inspection Services	701-509-7685
Clean Harbors	Spill Response / Disposal	800-645-8265
D&L Paraffin	Hot Oil Service – Production	701-664-2771
Darby's Welding	Welding	701-483-5896
Earthmovers	Spill Response	701-852-4560
Earth Systems	Environmental Remediation & Project Management	701-751-4868
KSI	Production Maint	701-664-8684
Indian Hills Electric	Electric	701-770-2275
J&L	Pit Liners	406-798-3655
MBI Energy Services	Trucking, Oil Field Support	701-575-8242
MK Weedon	Construction	406-366-3726
Rink	Roustabout Services	701-675-2458
RMR	Pit Reclaim, Fly Ash	701-570-9254
Roustabout Service	Insulation Services	701-641-3132
Stallion	Oil Field Services	307-851-0308
TechCorr	MOT Inspection Services	605-490-2427
The Response Group	Incident Management	281-880-5000
Total Safety	H2S Testing & Breathing Air Services	701-770-1955
Wood Group (PAC)	Contractor Services	701-818-0036
Wyoming Casing	Casing Services	701-225-8521

APPENDIX A - MAPS



Use HESS ND GIS MAPPING FOR SPECIFIC LOCATIONS -

<http://maps.ihess.com/northdakota/>

and/or Bakken Maps located at:

<\\minssfs001\data\TBNHD00\Bakken\Maps\FieldMaps>

Emergency Response Trailers

Hess North Dakota has 4 Emergency Response Trailers and 1 Boom Trailer containing the items listed in the table below. The code for the trailer locks is 1804. The locations of the Boom and Emergency Response Trailers are as follows:

1. Tioga Office Complex 10384 68th St NW Tioga, ND 58852
2. Keene Office 10892 Hwy 23 Keene, ND 58763
3. Tioga Rail Terminal 10515 67th Street NW Tioga, ND 58852 ER Trailer
4. Tioga Rail Terminal 10515 67th Street NW Tioga, ND 58852 Boom Trailer
5. Keene SC-4WX Well Site - Spill Material Trailer

Emergency Spill Response Trailer(s) Tioga, TRT & Keene Yard		
Item	Product Description	QtyPer Trailer
1	55 Gal. Drum Vacuum Unit - Nortech N551DC-NED	1
2	55 Gal Wet/Dry Vac Drum Top	1
3	Water Transfer Pump - Electric 120V	2
4	Air Compressor Ingersoll Rand IRTP1.5IU-A9 Elect 120V	1
5	Air Hose 25' ¼"	2
6	Generator Honda Gas (3-5k Watt) EB6500 w/ wheels	1
7	Manta Ray Skimmer	1
8	Drum Skimmer -Elastec TDS118 -	1
9	Floating Alpha Skimmer	1
10	Self-Priming Gas Driven Pump 3.5 HP Monarch - Honda	1
11	Heavy Duty Trash Pump Honda WT30XK3A - 319 GPM (3")	1
12	Double Diaphragm 1" pneumatic pump E-1	1
13	Iron Submersible Pump OTS 2" GR Grey	1
14	Pump Hoses 3" (Suction) with floats	3
15	Pump Hoses 2 1/2" (Suction) with floats	2
16	Pressure Washer Gas w/wheels (3000 PSI)	1
17	Drum Dolley (Bottom Fitting)	1
18	Steel Drum Dolly (Standing)	1
19	Electrical Extension Cords (50' x 12 gauge)	5
20	Flood Lights - Try-Pod w/ Stand (3 lights)	1
21	Work Lights	2
22	Portable Gas Pump - 14 Gallon Gravity fed	1
23	2 ½ Gallon Gas Can	1
24	Gasoline Siphon kit (hose/hand pump)	1
25	Chest Waders - plain toe -one each size 10, 11, 12	3
26	Traffic Cones 28" with reflective collars	6
27	Hi-Visibility Traffic Vest - FR - Adjustable to 5X	5
28	Life Floatation Vest - Type V Dipped, Mustang	4
29	Barricade Tape, Red "Danger Hazardous Area 1,000'	2
Emergency Spill Response Trailer(s) Tioga, TRT & Keene Yard Continued		

Item	Product Description	QtyPer Trailer
30	Barricade Tape, Yellow "Danger Do Not Enter" 1,000'	2
31	Flashlights, Super Sabrelite with batteries	4
32	Radio, 2 Way, hand held MD200TPR with batteries	4
33	Roll/Sheet of Poly (4 mil)	1
34	Trash Bags / Drum Liners Roll or Box of 3 mil	1
35	Bales (40') of 5" Sorbent Boom = 200 Feet	5
36	Bags of loose Absorbents (Oil Gator)	4
37	Brick Anchors w 10' Ropes	20
38	Pad Absorbents - Bag	4
39	Tyvek Suits - various sizes box	1
40	Nitrile Inner Gloves, box	1
41	Chicken Boots	20
42	Chemical Gloves - Outers	6
43	Rain Suits - box	1
44	Spade Shovels	2
45	Flat Shovels	2
46	Pitch Fork	2
47	Rake	2
48	Squeegees	2
49	Push Brooms	2
50	Duct Tape	2
51	Hammer - Dead Blow 2 lbs. - orange	1
52	Wood Slats/Stakes - bundle	1
53	Paper Towels	4
54	Disinfectant Wipes	1
55	Plywood Board 2'X2' (Culvert Cover)	1
56	Plywood Board 3'X3' (Culvert Cover)	1
57	Garden Hose 100'	2
57	Air Hose w Chicago fittings 100'	2
59	Bird Cannon	1
60	Propane Tank - 20 lbs for bird cannon	1
61	36" Pipe Wrenches	2
62	Tool Set & Teflon Tape	1
63	Sand Bags	25
64	Small Pool - Decon	1
65	Safety Glasses - box	1
66	Plastic Bucket for priming pumps	1
67	Hearing Protection - box	1
68	Eye Wash - check expiration date	2
69	Sea Foam - can of carburetor cleaner	1
70	Starter Fluid - can	1

Emergency Spill Response Trailer(s) Tioga, TRT & Keene Yard Continued		
Item	Product Description	QtyPer Trailer
71	Pump Saver - can - for pressure washer	1
72	Fuel Stabilizer - bottle	1
73	Decon - box - for Mice	4
74	Insect Repellant - Deet 40	2
75	Bird Cannon and 20 lbs propane tank	1
76	Trailer Hitch with 2 5/16 th inch ball & Hitch Pin	1
77	Spare Tire	1

TRT Boom Trailer (This Equipment Should Not Leave the Tioga Rail Terminal)		
Item	Product Description	QtyPer Trailer
1	1800' of 18" Containment Boom	1
2	Manta Ray Skimmer	1
3	Trailer Hitch w 2-5/16 th Inch Ball	1
4	Chest Waders - plain toe -one each size 10, 11, 12	3
5	Life Floatation Vest, Type V Dipped, Mustang	4
6	Hi-Visibility Traffic Vest - FR - Adjustable to 5X	5

SC 4WX Well Site Emergency Spill Material Trailer		
Item	Product Description	QtyPer Trailer
1	Spill Kits (small barrel)	2
2	55 gal Steel Drum	1
3	Poly Drum	1
4	Chest Waders - plain toe -one each size 10, 11, 12	3
5	Traffic Cones 28" with reflective collars	6
6	Hi-Visibility Traffic Vest - FR - Adjustable to 5X	5
7	Life Floatation Vest - Type V Dipped, Mustang	4
8	Barricade Tape, Red "Danger Hazardous Area 1,000'	2
9	Barricade Tape, Yellow "Danger Do Not Enter" 1,000'	2
10	Flashlights, Super Sabrelite with batteries	4
11	Radio, 2 Way, hand held MD200TPR with batteries	4
12	Roll/Sheet of Poly (4 mil)	1
13	Trash Bags / Drum Liners Roll or Box of 3 mil	1
14	Bales (40') of 5" Sorbent Boom = 400 Feet	10
15	Bags of loose Absorbents (Oil Gator)	4
16	Brick Anchors w 10' Ropes	40

SC 4WX Well Site Emergency Spill Material Trailer Continued		
Item	Product Description	QtyPer Trailer
17	Pad Absorbents - Bag	4
18	Tyvek Suits - various sizes box	1
19	Nitrile Inner Gloves, box	1
20	Chicken Boots	20
21	Chemical Gloves - Outers	6
22	Rain Suits - box	1
23	Spade Shovels	2
24	Flat Shovels	2
25	Pitch Fork	2
26	Rake	2
27	Squeegees	2
28	Push Brooms	2
29	Duct Tape	2
30	Hammer - Dead Blow 2 lbs. - orange	1
31	Wood Slats/Stakes - bundle	1
32	Paper Towels	4
33	Disinfectant Wipes	1
34	Plywood Board 2'X2' (Culvert Cover)	1
35	Plywood Board 3'X3' (Culvert Cover)	1
36	Sand Bags	25
37	Small Pool - Decon	1
38	Safety Glasses - box	1
39	Eye Wash - check expiration date	2
40	Decon - box - for Mice	4
41	Insect Repellant - Deet 40	2
42	Bird Cannon and 20 lbs propane tank	1
43	Trailer Hitch with 2 5/16 th inch ball & Hitch Pin	1
44	Spare Tire	1