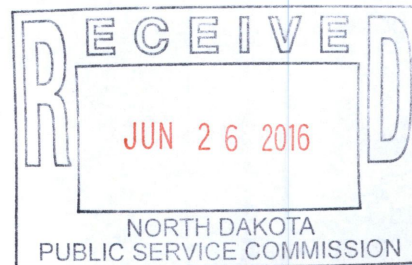


September 26, 2016

Julie Prescott
North Dakota Public Service Commission
600 East Boulevard Avenue, Dept. 408
Bismarck, ND 58505-0480



Dear Ms. Prescott:

Carlson McCain, Inc. (CMI) conducted a topsoil removal inspection at the Hess ETP Pipeline – Williams County (Case No. PU-16-189) on September 15, 2016, on behalf of the North Dakota Public Service Commission (PSC). The project consists of installing a 12-inch diameter, 1.1-mile crude oil pipeline.

CMI Inspector Chad Tucker met with Mr. Jesse Villasenor, Project Coordinator for Bergaila Company, at the south end of the construction corridor of the project. Mr. Villasenor stated that topsoil removal had begun the day before (September 14th) and was currently 85-90% complete. The topsoil removal was expected to be complete by September 16th.

Mr. Villasenor and Mr. Tucker proceeded to the right-of-way (ROW) to view construction practices and topsoil removal. Inspection notes and photos taken along the ROW are attached to this letter.

Field Review

Weather conditions at the time of the field visit were overcast/rain, 60 degrees, with 5 mph west winds. The inspection started at the south end of the corridor. Overhead lines were flagged and pipeline corridor markers were in place. Topsoil had been stripped to a depth of 8-10 inches on average. Upland drains had topsoil as deep as 20 inches. Topsoil was stored on west/north side of the pipeline corridor in a row approximately 3-5 feet high. The topsoil stripping, segregation, and storage was consistent with regulations set forth by the North Dakota PSC.

Potholes were dug to locate and mark existing underground lines and the holes were marked with orange snow fence. Matting was installed in low areas of the pipeline corridor to allow vehicle passage. Straw waddles were being installed for erosion control at the time of the inspection. Soil observation points and photo locations are documented on Figure 1.

43 **PU-16-189** Filed: 9/26/2016 Pages: 7
Topsoil Removal Inspection Report

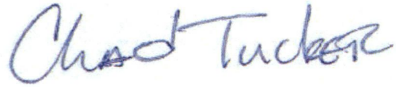
Carlson McCain, Inc.

Chad Tucker, Wildlife Biologist

Topsoil Removal Inspection
PSC Case No. PU-16-189

Please contact me at 701-595-7007 if you have any questions or comments.

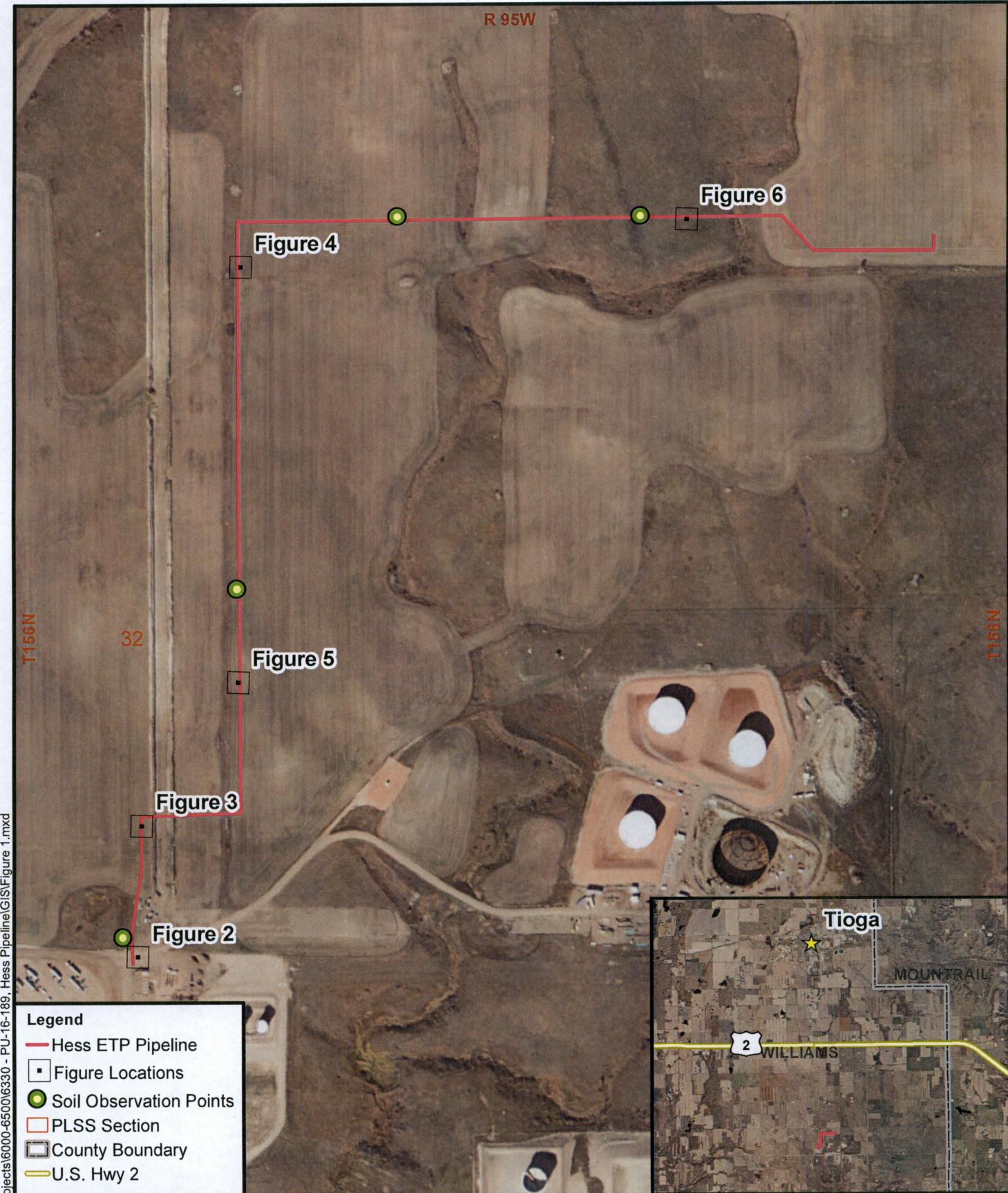
Respectfully submitted,

A handwritten signature in blue ink that reads "Chad Tucker". The signature is written in a cursive, slightly slanted style.

Chad Tucker
Wildlife Biologist

cc: Mr. Suwat Suwansathit – Project Lead, Hess Corporation.

Attachments: notes, figure, and field photographs



September 2016 R:\projects\6000-6500\6330 - PU-16-189, Hess Pipeline\GIS\Figure 1.mxd

Legend

- Hess ETP Pipeline
- Figure Locations
- Soil Observation Points
- PLSS Section
- County Boundary
- U.S. Hwy 2

1:6,000

0 250 500 Feet

Basemap: NAIP\North_Dakota_2015_1m

**Carlson
McCain**

ENVIRONMENTAL • ENGINEERING • LAND SURVEYING
600 South 2nd Street, Suite 105, Bismarck, North Dakota 58504
www.carlsonmccain.com



Figure 1
PSC Topsoil Inspection
 ETP Pipeline
 Hess Corporation



Figure 2. Photo taken facing north at the south end of the pipeline corridor. Overhead powerlines were marked.



Figure 3. Photo taken looking north/northeast. Matting is in place and potholes are dug and marked with orange snow fence.



Figure 4. A portion of the pipeline runs parallel with the Dakota Access Pipeline (reclaimed area).



Figure 5. View looking east down the pipeline corridor.



Figure 6. Photo showing the end of topsoil stripping on the north/east end of corridor.

Project HESS ETP Pipeline

Project No. PU-16-189

Signature Chad Tucker

Date 9/15/16

* JESSE VILLASENOR (Beegula Camp)

* 1:30 pm. Cloudy (RAIN 60°). 5 mph W wind

* Topsoil depth 8-10" AVE.

* 85-90% topsoil removal complete

* App. 1 day remaining to complete topsoil removal.

* WADLE installation to be complete by 9/16

* Potholes dug

* Corridor started

* Topsoil piled on N/W side of corridor app. 3-5'

* Small portion of line ~~not~~ not striped on N/E ^{EXIT} ~~side~~ of route due to DAPL.