



September 22, 2016

Public Service Commission
600 East Boulevard Ave., Dept. 408
Bismarck, ND 58505-0480

Re: Case No. PU-16-420
Caliber Bear Den Interconnect, LLC
12.75-inch Crude Oil Pipeline Project
McKenzie County



Dear Commissioners:

This department has reviewed the information concerning the above-referenced project submitted under date of September 7, 2016, with respect to possible environmental impacts.

This department believes that environmental impacts from the proposed construction will be minor and can be controlled by proper construction methods. With respect to construction, we have the following comments:

1. All necessary measures must be taken to minimize fugitive dust emissions created during construction activities. Any complaints that may arise are to be dealt with in an efficient and effective manner.
2. Aggregate to be used for road construction should not contain any erionite. Aggregate sources should be tested for erionite following guidelines found at www.ndhealth.gov/EHS/Erionite. For questions regarding erionite testing, please call Scott Radig at 701-328-5166.
3. Care is to be taken during construction activity near any water of the state to minimize adverse effects on a water body. This includes minimal disturbance of stream beds and banks to prevent excess siltation, and the replacement and revegetation of any disturbed area as soon as possible after work has been completed. Caution must also be taken to prevent spills of oil and grease that may reach the receiving water from equipment maintenance, and/or the handling of fuels on the site. Guidelines for minimizing degradation to waterways during construction are attached.
4. Oil and gas projects disturbing one or more acres are required to obtain a permit to discharge storm water if runoff from the project will carry eroded material to a water of the state. A permit is not required for oil and gas projects if runoff from the project will not carry eroded

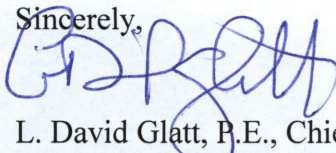
material to a water of the state. Further information on the storm water permit may be obtained from the Department's website or by calling the Division of Water Quality (701-328-5210). In addition, cities or counties may impose additional requirements and/or specific best management practices for construction affecting their storm drainage system. Check with the local officials to be sure any local storm water management considerations are addressed.

5. The construction project overlies the Tobacco Garden aquifer. The proposed route is also near several wellhead protection areas and private water supply wells (map attached). Care should be taken to avoid spills of any materials that may have an adverse effect on groundwater quality. All spills must be immediately reported to this Department and appropriate remedial actions performed.
6. Noise from construction activities may have adverse effects on persons who live near the construction area. Noise levels can be minimized by ensuring that construction equipment is equipped with a recommended muffler in good working order. Noise effects can also be minimized by ensuring that construction activities are not conducted during early morning or late evening hours.
7. Projects that involve construction of pipelines should select locations that minimize the potential for impacts to human health and the environment during and after construction by avoiding, when possible, source water protection areas and sensitive surface and groundwater environments. Additionally, when possible, pipeline routes should select areas with natural barriers to both surface and ground waters. Human health and the environment should be further protected by developing a spill response plan that emphasizes rapid deployment of prepositioned assets necessary to contain spills and subsequent cleanup. Proper surveillance and monitoring for early detection of leaks should be required.

The department owns no land in or adjacent to the proposed improvements, nor does it have any projects scheduled in the area. In addition, we believe the proposed activities are consistent with the State Implementation Plan for the Control of Air Pollution for the State of North Dakota.

If you have any questions regarding our comments, please feel free to contact this office.

Sincerely,



L. David Glatt, P.E., Chief
Environmental Health Section

LDG:cc

Attach.

c: Scott Radig, Director, Division of Waste Management



Construction and Environmental Disturbance Requirements

These represent the minimum requirements of the North Dakota Department of Health. They ensure that minimal environmental degradation occurs as a result of construction or related work which has the potential to affect the waters of the State of North Dakota. All projects will be designed and implemented to restrict the losses or disturbances of soil, vegetative cover, and pollutants (chemical or biological) from a site.

Soils

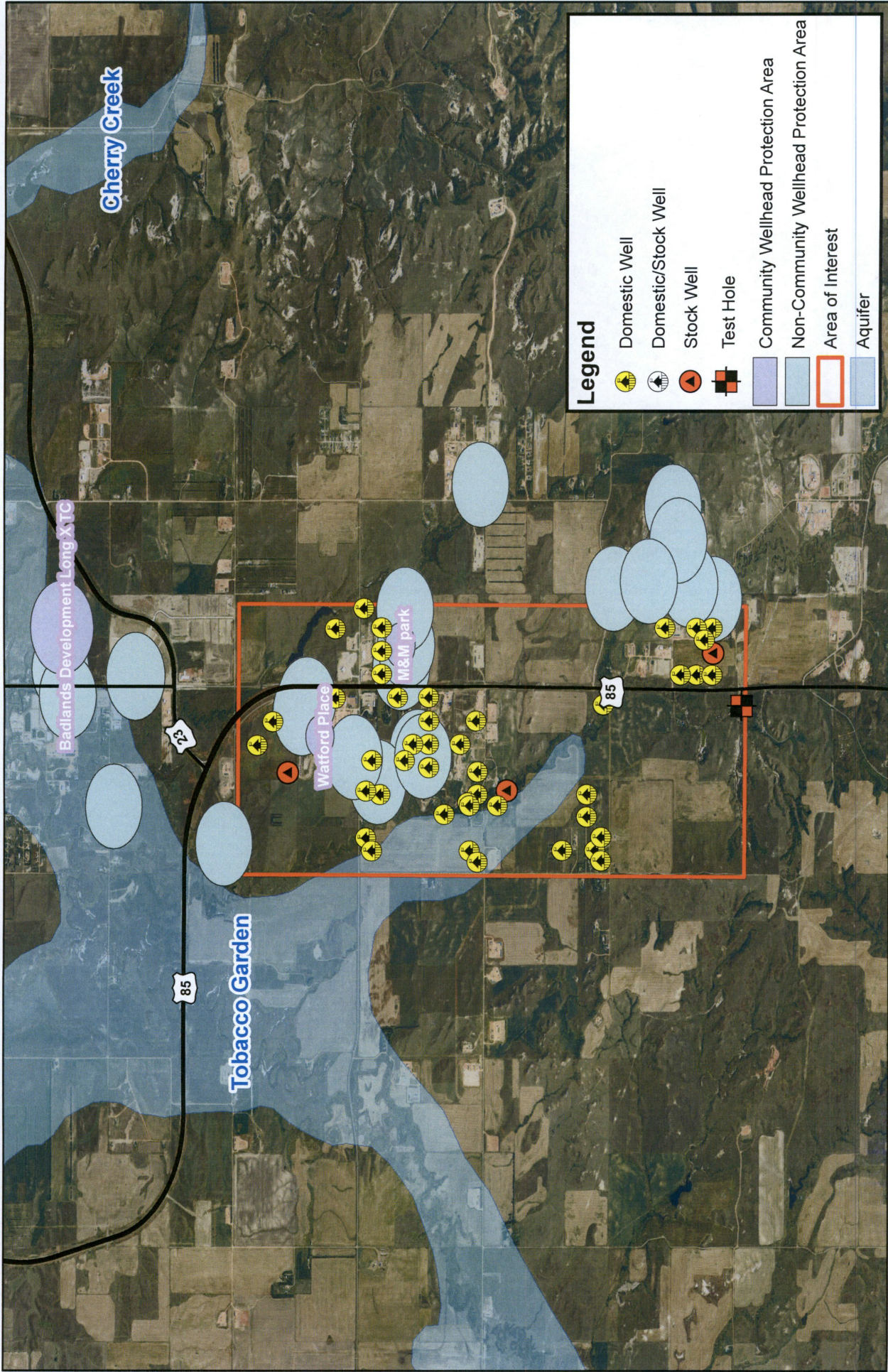
Prevent the erosion of exposed soil surfaces and trapping sediments being transported. Examples include, but are not restricted to, sediment dams or berms, diversion dikes, hay bales as erosion checks, riprap, mesh or burlap blankets to hold soil during construction, and immediately establishing vegetative cover on disturbed areas after construction is completed. Fragile and sensitive areas such as wetlands, riparian zones, delicate flora, or land resources will be protected against compaction, vegetation loss, and unnecessary damage.

Surface Waters

All construction which directly or indirectly impacts aquatic systems will be managed to minimize impacts. All attempts will be made to prevent the contamination of water at construction sites from fuel spillage, lubricants, and chemicals, by following safe storage and handling procedures. Stream bank and stream bed disturbances will be controlled to minimize and/or prevent silt movement, nutrient upsurges, plant dislocation, and any physical, chemical, or biological disruption. The use of pesticides or herbicides in or near these systems is forbidden without approval from this Department.

Fill Material

Any fill material placed below the high water mark must be free of top soils, decomposable materials, and persistent synthetic organic compounds (in toxic concentrations). This includes, but is not limited to, asphalt, tires, treated lumber, and construction debris. The Department may require testing of fill materials. All temporary fills must be removed. Debris and solid wastes will be removed from the site and the impacted areas restored as nearly as possible to the original condition.



Caliber Bear Den Interconnect, LLC
 12.75" Crude Oil Pipeline
 PSC Case No. PU-16-420

09/13/2016
 DPK