

Glacier Ridge Wind Farm

Barnes County, North Dakota

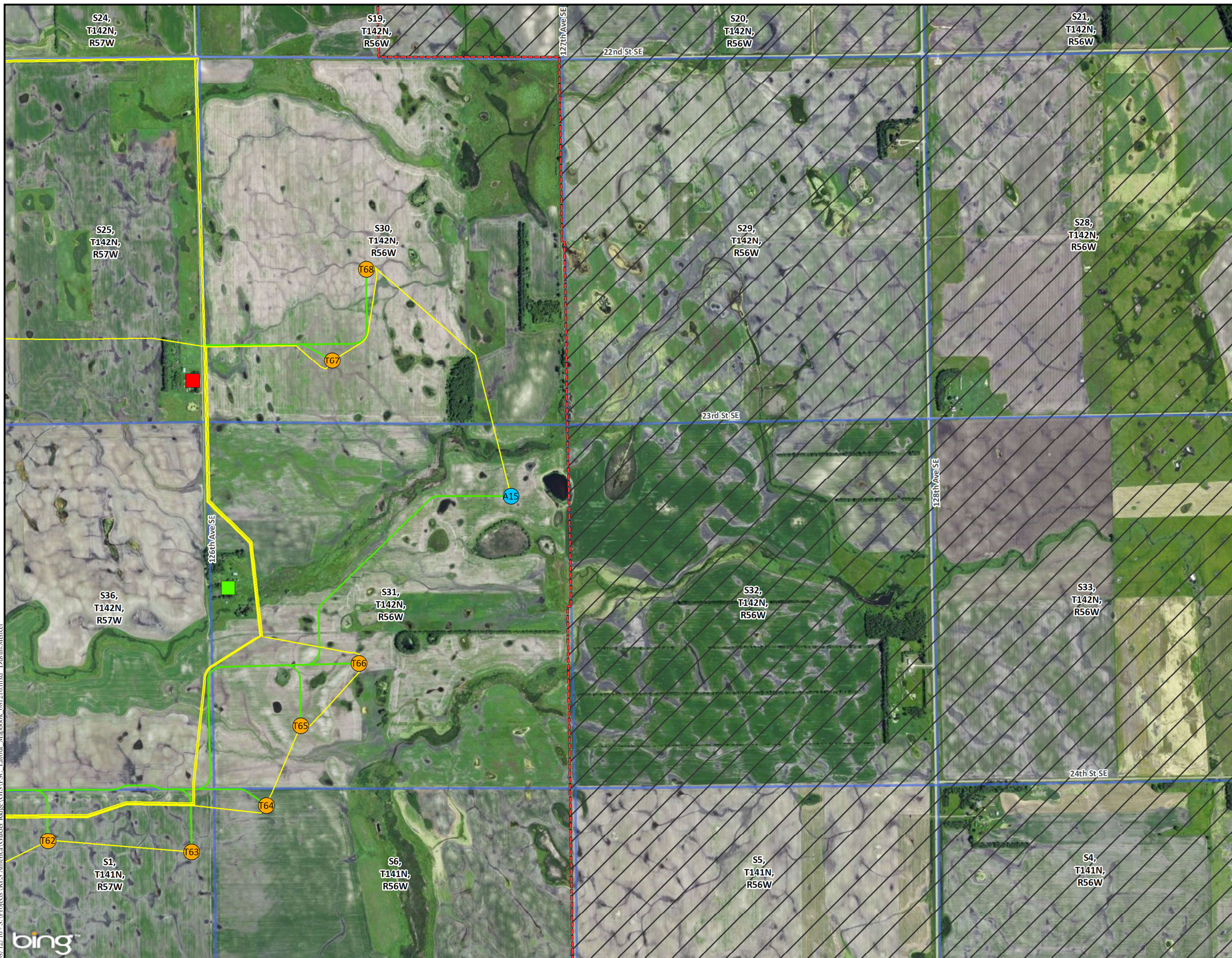
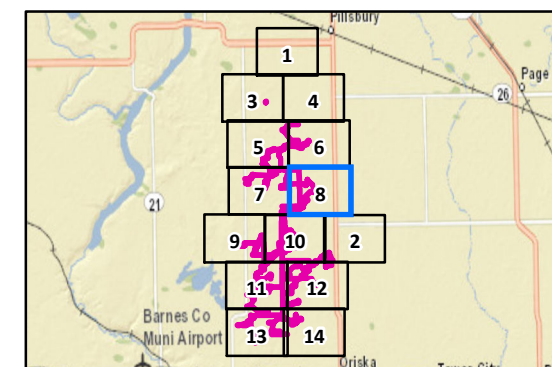
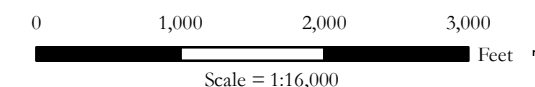
Map Page - 8

Proposed Project Facilities

- Proposed Turbine (8/11/16)
- Alternate Turbine (8/11/16)
- Proposed Collection Line (8/11/16)
- Proposed Service Road (8/11/16)
- * Proposed Met Tower (6/13/16)
- Proposed O&M Building (7/6/16)
- Proposed Project Area (7/1/16)
- Outside Project Area
- PLSS Boundary

Farmstead Points

- Not Participating (8/5/16)
- Participating (8/5/16)



08/12/16 - S:\Projects\RES-Americas\Glacier Ridge\GIS\PSC_Layout_Mapbook_081216.mxd - Dustin Menece



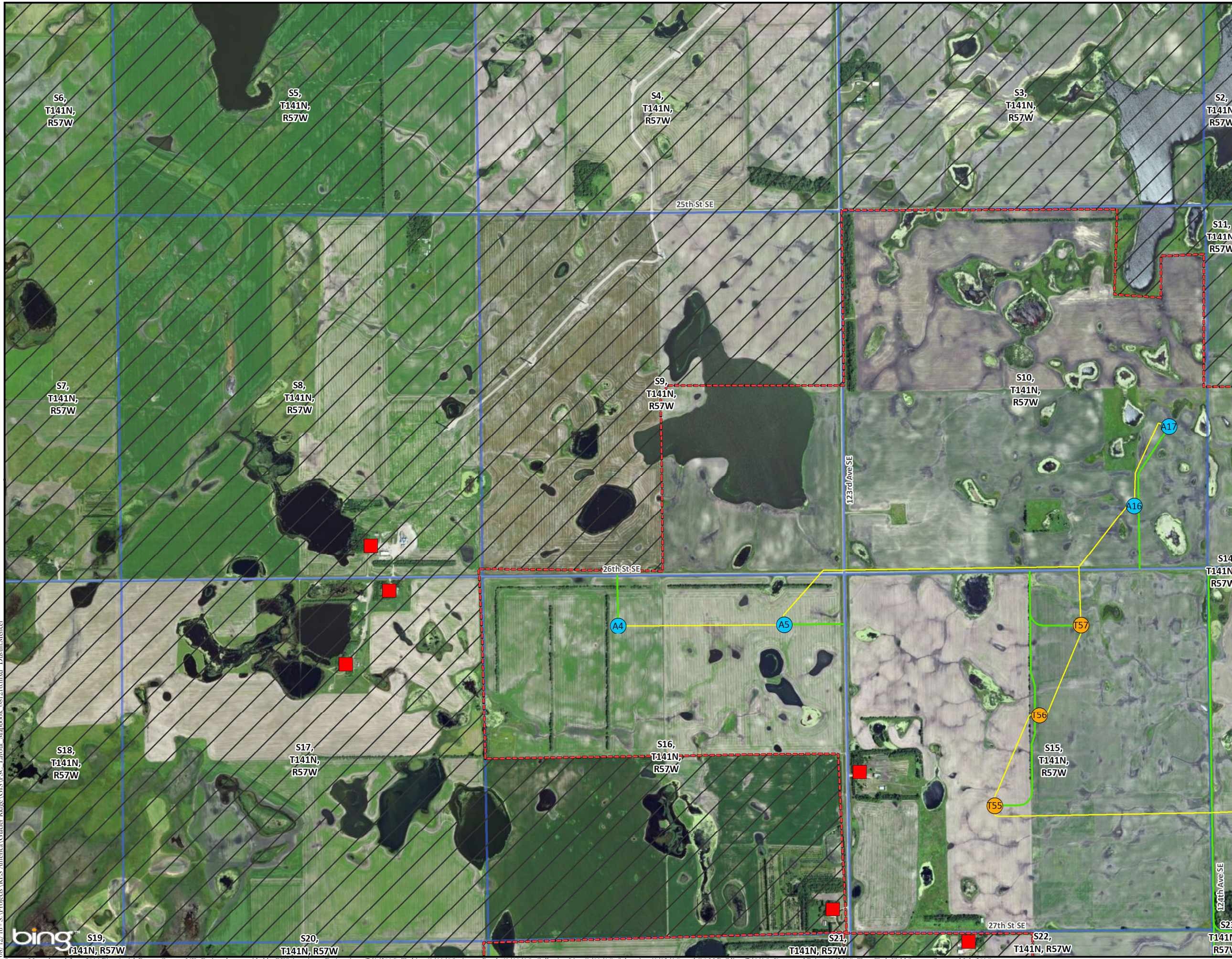
Source: Map adapted from 2016 Bing Aerial, Barnes County, ND; Project data provided by RES Americas - Project Area (7/1/2016), Turbine (8/11/16), Access Roads (8/11/16), Collection Line (8/11/16), Substation (6/13/16), and O&M Building (7/6/16), Farmstead Points (8/5/16); Tetra Tech Field Surveys (June and July 2016).



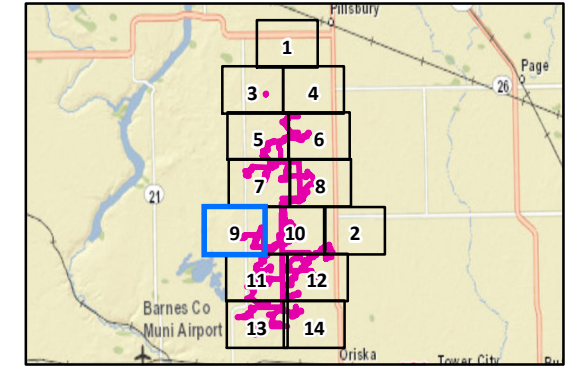
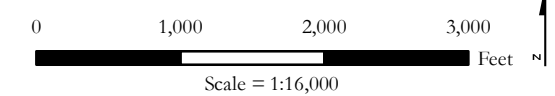
Glacier Ridge Wind Farm

Barnes County, North Dakota

Map Page - 9



- Proposed Project Facilities**
- Proposed Turbine (8/11/16)
 - Alternate Turbine (8/11/16)
 - Proposed Collection Line (8/11/16)
 - Proposed Service Road (8/11/16)
 - * Proposed Met Tower (6/13/16)
 - Proposed O&M Building (7/6/16)
 - Proposed Project Area (7/1/16)
 - Outside Project Area
 - PLSS Boundary
- Farmstead Points**
- Not Participating (8/5/16)
 - Participating (8/5/16)



Source: Map adapted from 2016 Bing Aerial, Barnes County, ND; Project data provided by RES Americas - Project Area (7/1/2016), Turbine (8/11/16), Access Roads (8/11/16), Collection Line (8/11/16), Substation (6/13/16), and O&M Building (7/6/16), Farmstead Points (8/5/16); Tetra Tech Field Surveys (June and July 2016).

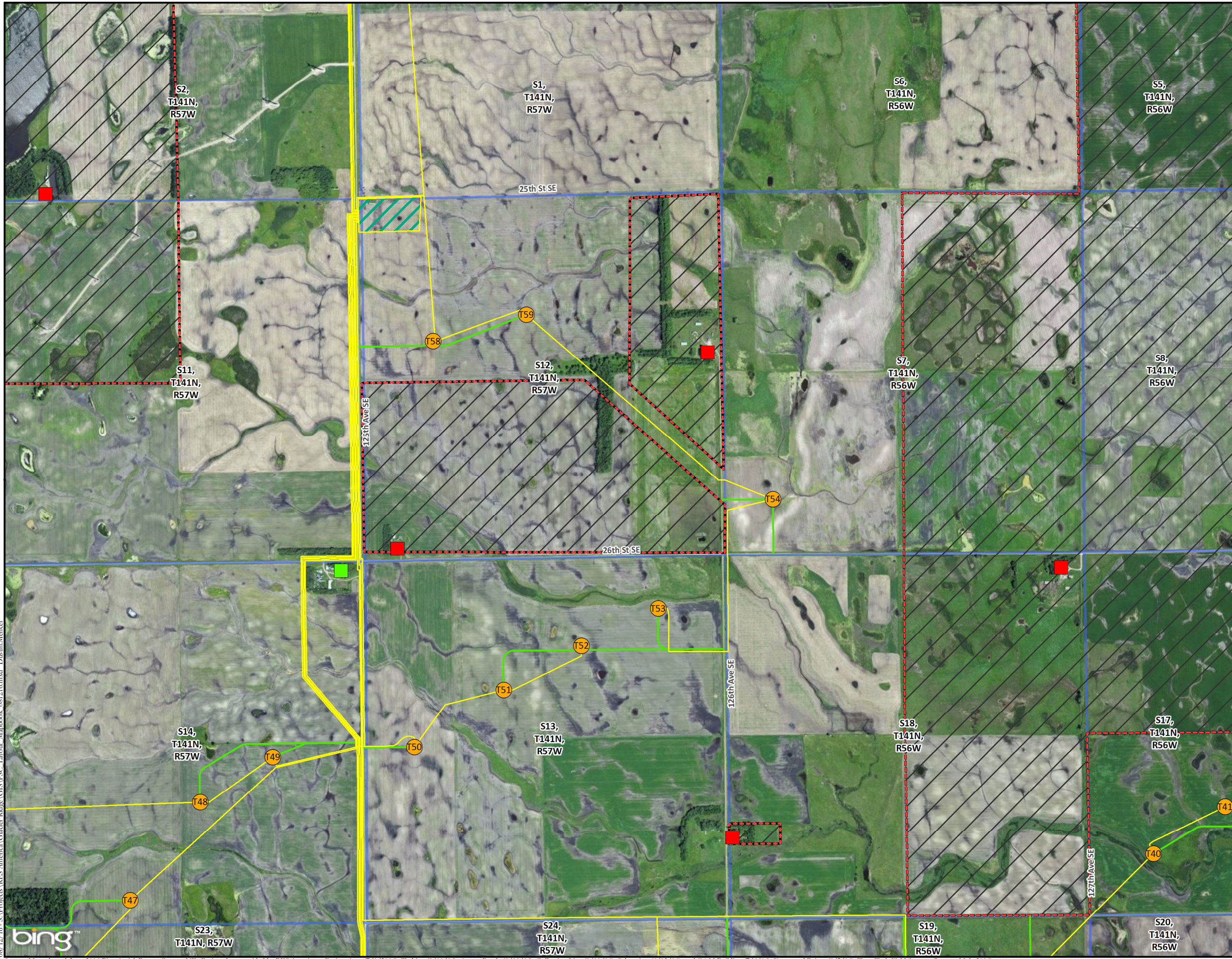
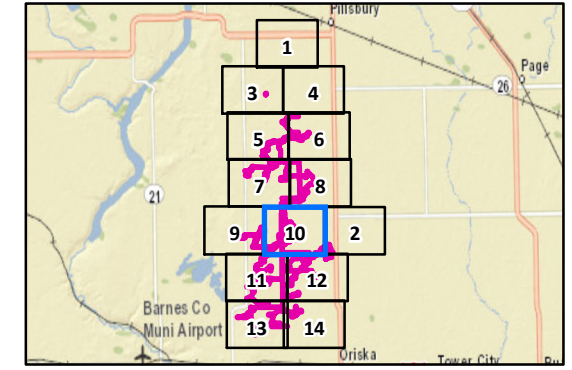
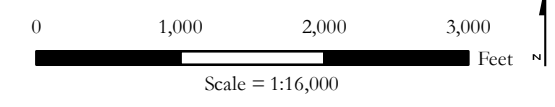


Glacier Ridge Wind Farm

Barnes County, North Dakota

Map Page - 10

- Proposed Project Facilities**
- Proposed Turbine (8/11/16)
 - Alternate Turbine (8/11/16)
 - Proposed Collection Line (8/11/16)
 - Proposed Service Road (8/11/16)
 - ✱ Proposed Met Tower (6/13/16)
 - Proposed O&M Building (7/6/16)
 - Proposed Project Area (7/1/16)
 - Outside Project Area
 - PLSS Boundary
- Farmstead Points**
- Not Participating (8/5/16)
 - Participating (8/5/16)



08/12/16 - S:\Projects\RES_America\Glacier Ridge\GIS\PSC_Layout_Mapbook_081216.mxd - Dustin Menced



Source: Map adapted from 2016 Bing Aerial, Barnes County, ND; Project data provided by RES Americas - Project Area (7/1/2016), Turbine (8/11/16), Access Roads (8/11/16), Collection Line (8/11/16), Substation (6/13/16), and O&M Building (7/6/16), Farmstead Points (8/5/16); Tetra Tech Field Surveys (June and July 2016).



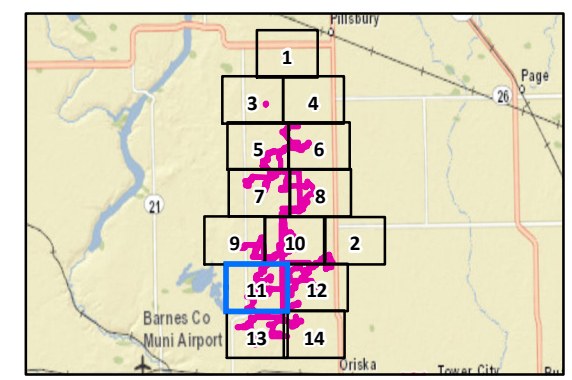
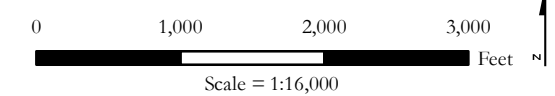
Glacier Ridge Wind Farm

Barnes County, North Dakota

Map Page - 11



- Proposed Project Facilities**
- Proposed Turbine (8/11/16)
 - Alternate Turbine (8/11/16)
 - Proposed Collection Line (8/11/16)
 - Proposed Service Road (8/11/16)
 - * Proposed Met Tower (6/13/16)
 - Proposed O&M Building (7/6/16)
 - Proposed Project Area (7/1/16)
 - Outside Project Area
 - PLS Boundary
- Farmstead Points**
- Not Participating (8/5/16)
 - Participating (8/5/16)



08/12/16 - S:\Projects\RES_America\Glacier Ridge\GIS\PSC_Layout_Mapbook_081216.mxd - Dustin Meneel

Source: Map adapted from 2016 Bing Aerial, Barnes County, ND; Project data provided by RES Americas - Project Area (7/1/2016), Turbine (8/11/16), Access Roads (8/11/16), Collection Line (8/11/16), Substation (6/13/16), and O&M Building (7/6/16), Farmstead Points (8/5/16); Tetra Tech Field Surveys (June and July 2016).

Glacier Ridge Wind Farm

Barnes County, North Dakota

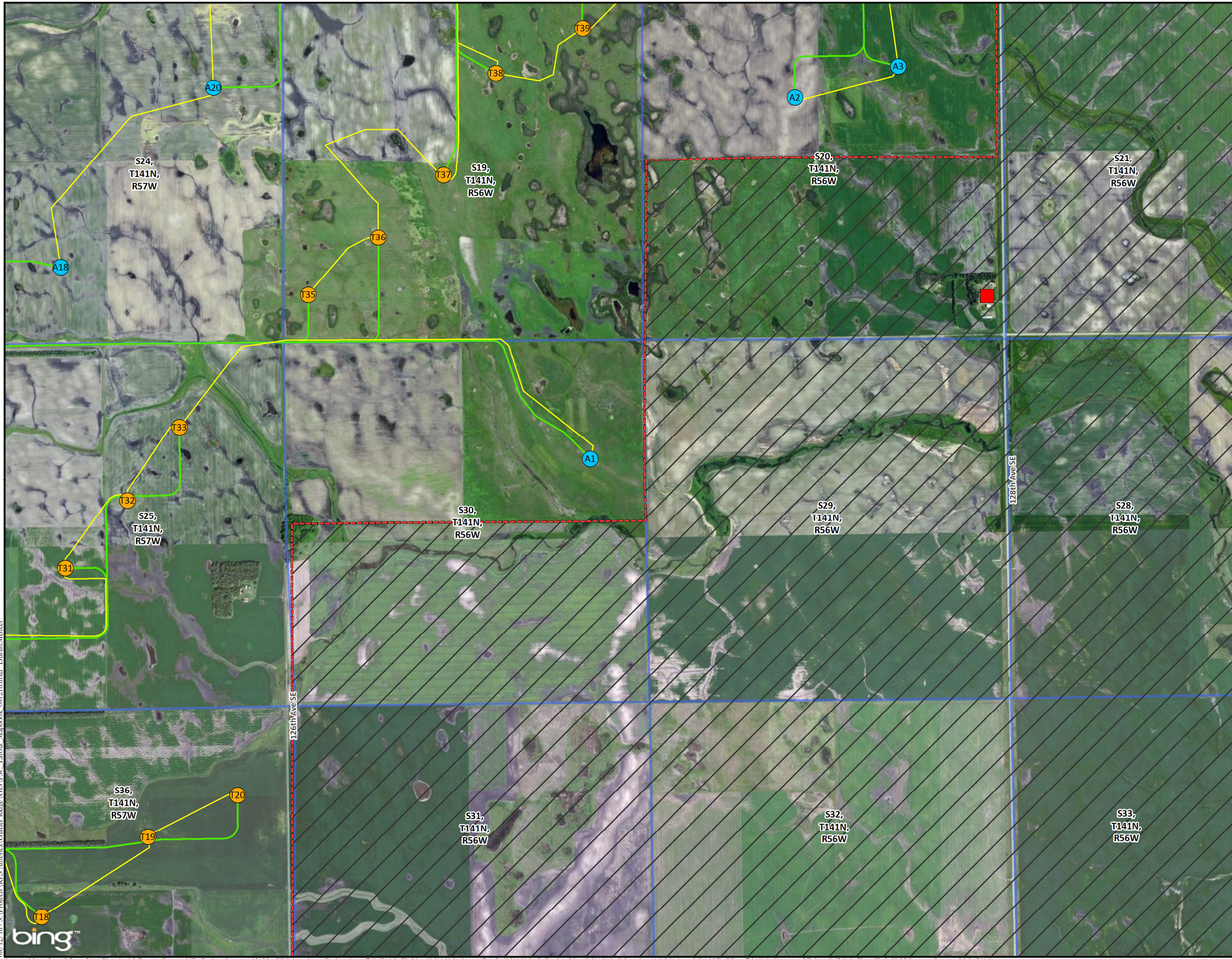
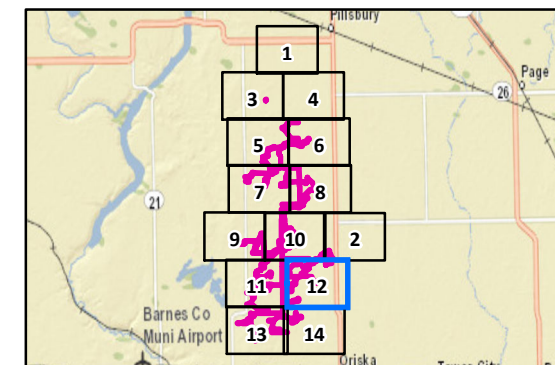
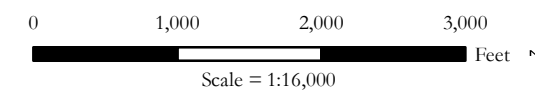
Map Page - 12

Proposed Project Facilities

- Proposed Turbine (8/11/16)
- Alternate Turbine (8/11/16)
- Proposed Collection Line (8/11/16)
- Proposed Service Road (8/11/16)
- * Proposed Met Tower (6/13/16)
- Proposed O&M Building (7/6/16)
- Proposed Project Area (7/1/16)
- Outside Project Area
- PLSS Boundary

Farmstead Points

- Not Participating (8/5/16)
- Participating (8/5/16)



08/12/16 - S:\Projects\RES America\Glacier Ridge\GIS\PSC_Layout_Mapbook_081216.mxd - Dustin Menzel
 Source: Map adapted from 2016 Bing Aerial, Barnes County, ND; Project data provided by RES Americas - Project Area (7/1/2016), Turbine (8/11/16), Access Roads (8/11/16), Collection Line (8/11/16), Substation (6/13/16), and O&M Building (7/6/16), Farmstead Points (8/5/16); Tetra Tech Field Surveys (June and July 2016).



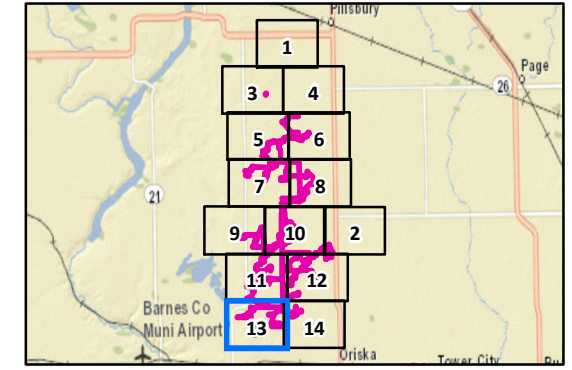
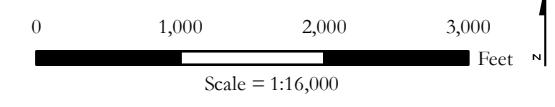
Glacier Ridge Wind Farm

Barnes County, North Dakota

Map Page - 13



- Proposed Project Facilities**
- Proposed Turbine (8/11/16)
 - Alternate Turbine (8/11/16)
 - Proposed Collection Line (8/11/16)
 - Proposed Service Road (8/11/16)
 - * Proposed Met Tower (6/13/16)
 - Proposed O&M Building (7/6/16)
 - Proposed Project Area (7/1/16)
 - Outside Project Area
 - PLSS Boundary
- Farmstead Points**
- Not Participating (8/5/16)
 - Participating (8/5/16)



08/12/16 - S:\Projects\RES-America\Glacier Ridge\GIS\PSC-Layou\Mapbook_081216.mxd - Dustin Menzel

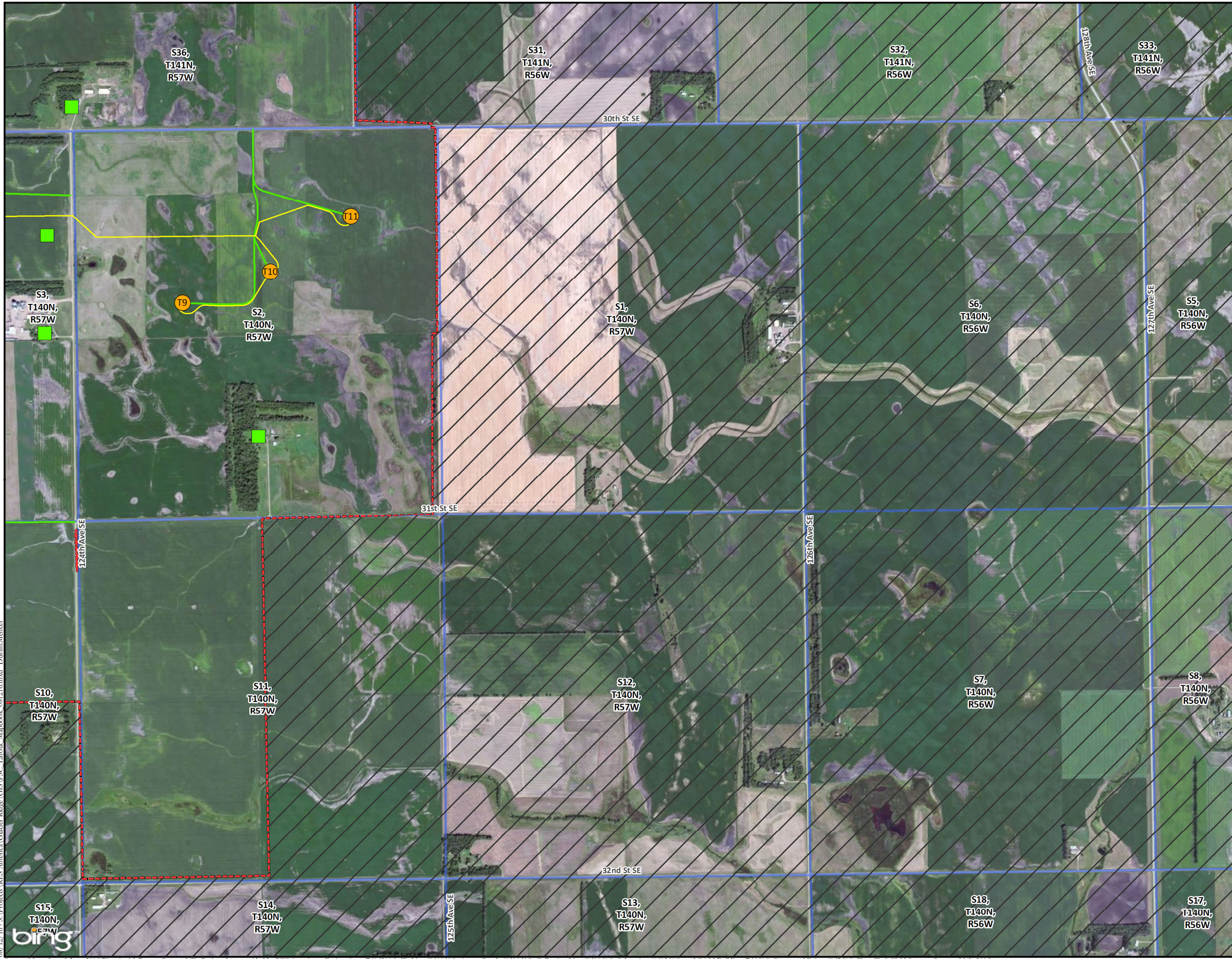
Source: Map adapted from 2016 Bing Aerial, Barnes County, ND; Project data provided by RES Americas - Project Area (7/1/2016), Turbine (8/11/16), Access Roads (8/11/16), Collection Line (8/11/16), Substation (6/13/16), and O&M Building (7/6/16), Farmstead Points (8/5/16); Tetra Tech Field Surveys (June and July 2016).



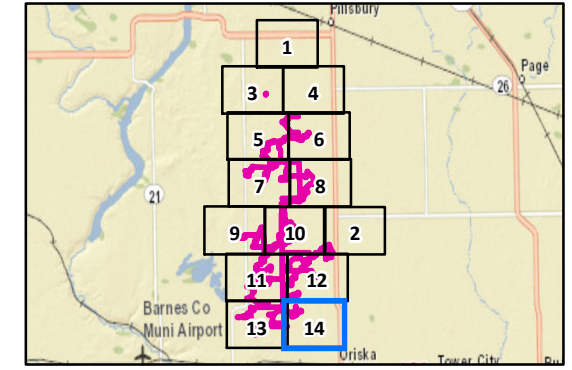
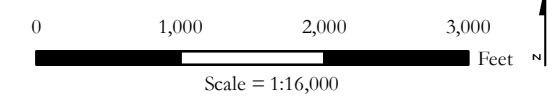
Glacier Ridge Wind Farm

Barnes County, North Dakota

Map Page - 14



- Proposed Project Facilities**
- Proposed Turbine (8/11/16)
 - Alternate Turbine (8/11/16)
 - Proposed Collection Line (8/11/16)
 - Proposed Service Road (8/11/16)
 - * Proposed Met Tower (6/13/16)
 - Proposed O&M Building (7/6/16)
 - Proposed Project Area (7/1/16)
 - Outside Project Area
 - PLSS Boundary
- Farmstead Points**
- Not Participating (8/5/16)
 - Participating (8/5/16)



08/12/16 - S:\Projects\RES America\Glacier Ridge\GIS\Layout_Mapsbook_081216.mxd Dustin Menezel

Source: Map adapted from 2016 Bing Aerial, Barnes County, ND; Project data provided by RES Americas - Project Area (7/1/2016), Turbine (8/11/16), Access Roads (8/11/16), Collection Line (8/11/16), Substation (6/13/16), and O&M Building (7/6/16), Farmstead Points (8/5/16); Tetra Tech Field Surveys (June and July 2016).

