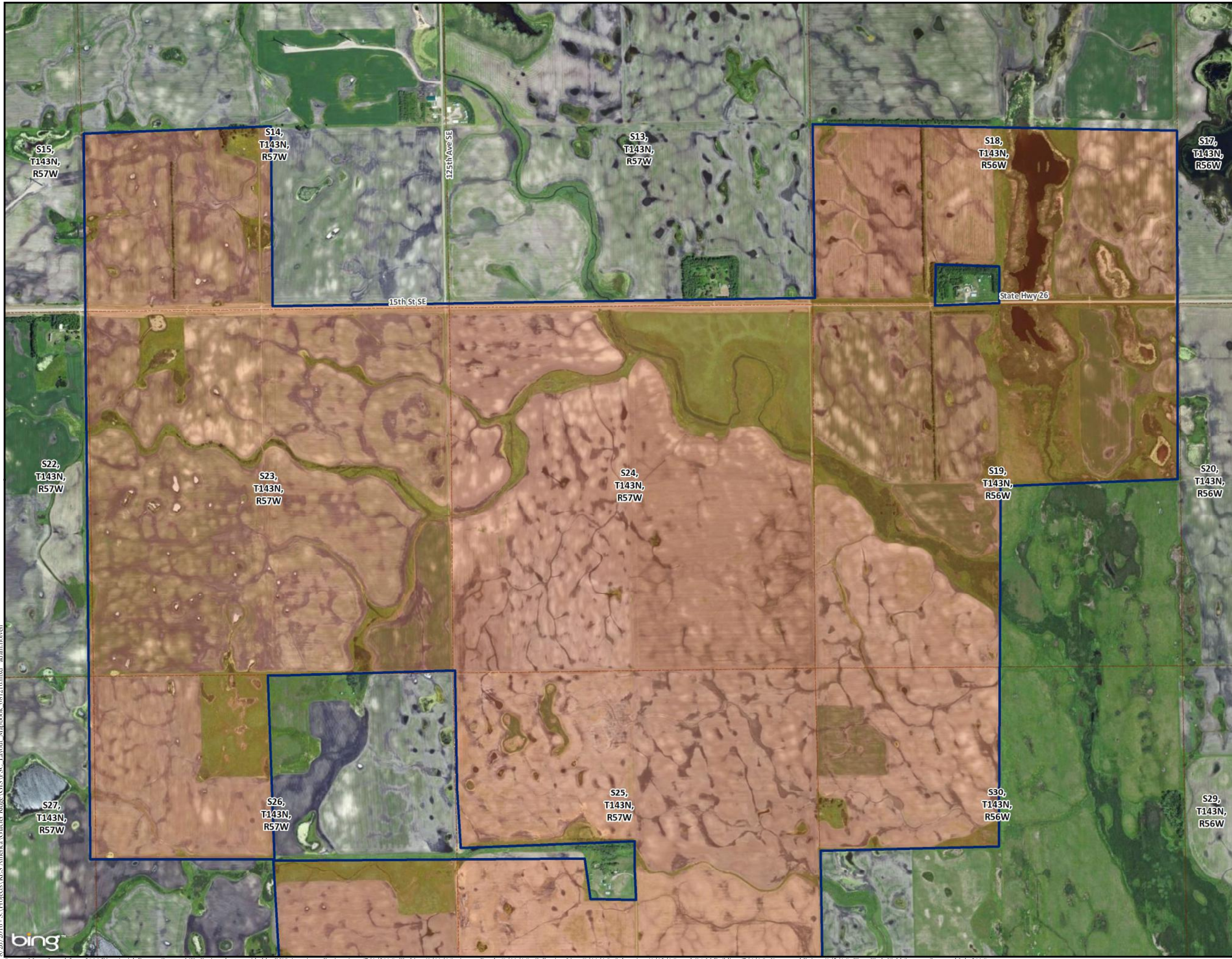


Glacier Ridge Wind Farm

Barnes County, North Dakota

Map Page - 1



Project Area

Proposed Project Area (7/1/16)

Proposed Project Facilities

Proposed Turbine (8/11/16)

Alternate Turbine (8/11/16)

Proposed Service Road (8/11/16)

Proposed Collection Line (8/11/16)

Proposed Met Tower (6/13/16)

Proposed O&M Building (7/6/16)

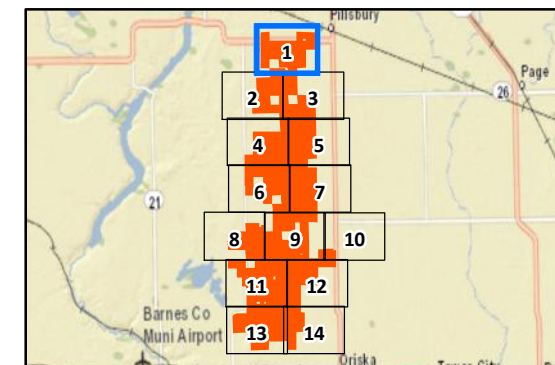
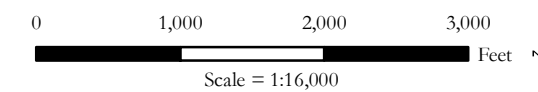
Residences

Participating (8/5/16)

Not Participating (8/5/16)

Non-Project Layers

PLSS Boundary

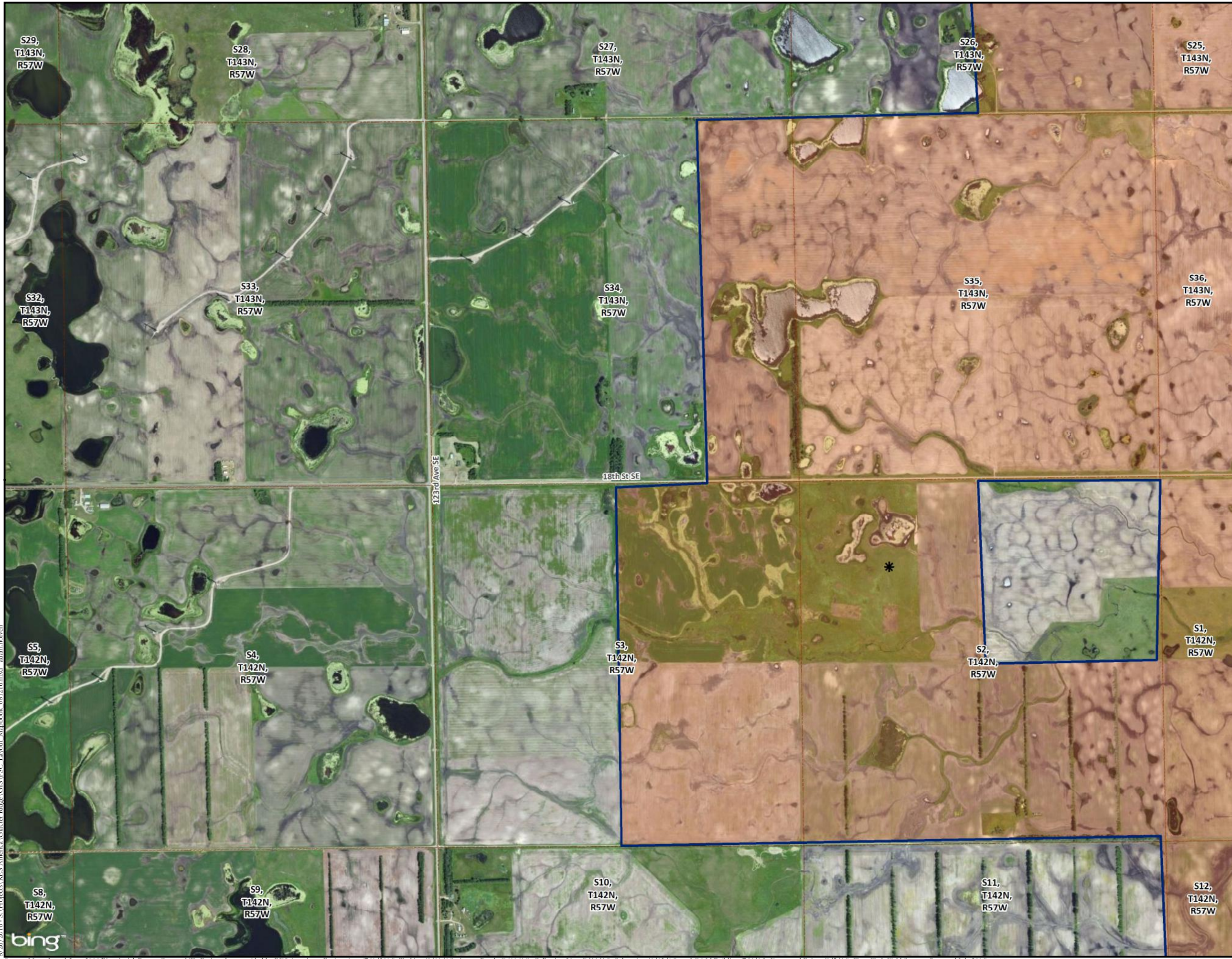


8/26/2016 - S:\Projects\RES America\Glacier Ridge\GIS\PSC_Layout_Mapbook_081216.mxd adam.holven

Glacier Ridge Wind Farm

Barnes County, North Dakota

Map Page - 2



Project Area

Proposed Project Area (7/1/16)

Proposed Project Facilities

Proposed Turbine (8/11/16)

Alternate Turbine (8/11/16)

Proposed Service Road (8/11/16)

Proposed Collection Line (8/11/16)

Proposed Met Tower (6/13/16)

Proposed O&M Building (7/6/16)

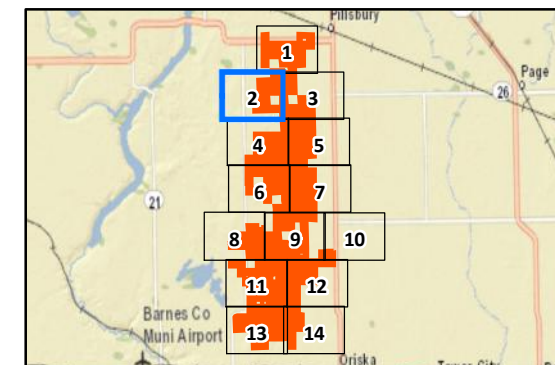
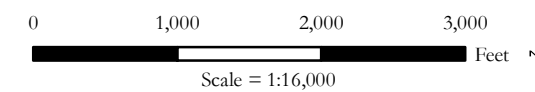
Residences

Participating (8/5/16)

Not Participating (8/5/16)

Non-Project Layers

PLSS Boundary



8/26/2016 - S:\Projects\RES America\Glacier Ridge\GIS\PSC_Layout_Mapbook_081216.mxd - adam.holven

Source: Map adapted from 2016 Bing Aerial, Barnes County, ND; Project data provided by RES Americas - Project Area (7/1/2016), Turbine (8/11/16), Access Roads (8/11/16), Collection Line (8/11/16), Substation (6/13/16), and O&M Building (7/6/16), Farmstead Points (8/5/16); Tetra Tech Field Surveys (June and July 2016).

Glacier Ridge Wind Farm


Barnes County, North Dakota


Map Page - 3

Project Area

 Proposed Project Area (7/1/16)

Proposed Project Facilities

 Proposed Turbine (8/11/16)

 Alternate Turbine (8/11/16)

 Proposed Service Road (8/11/16)

 Proposed Collection Line (8/11/16)

 Proposed Met Tower (6/13/16)


 Proposed O&M Building (7/6/16)

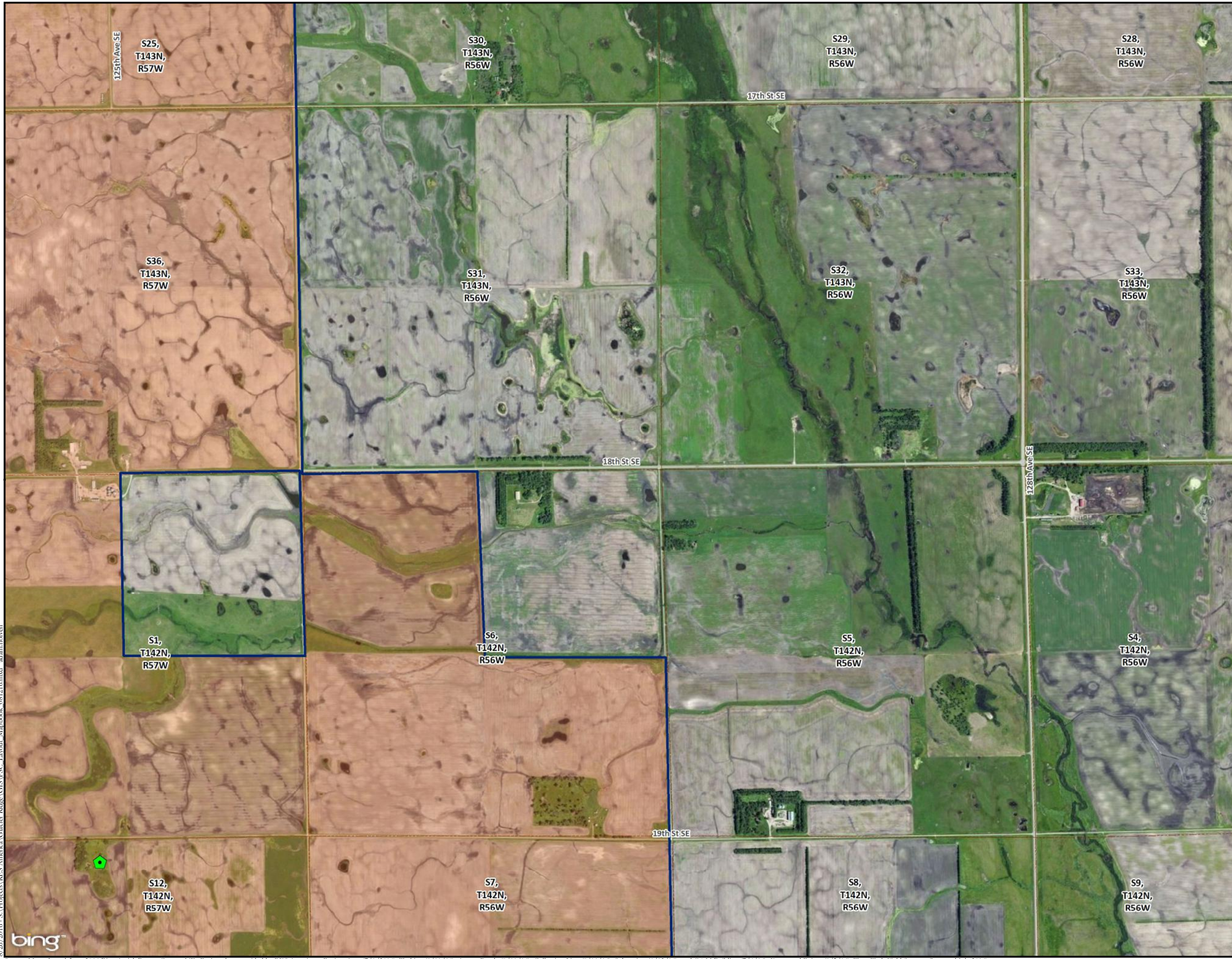
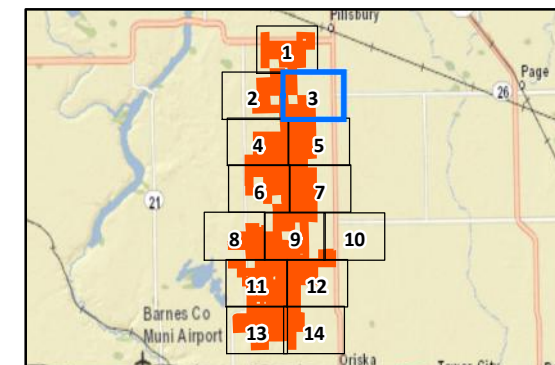
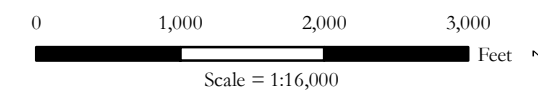
Residences

 Participating (8/5/16)

 Not Participating (8/5/16)

Non-Project Layers

 PLSS Boundary



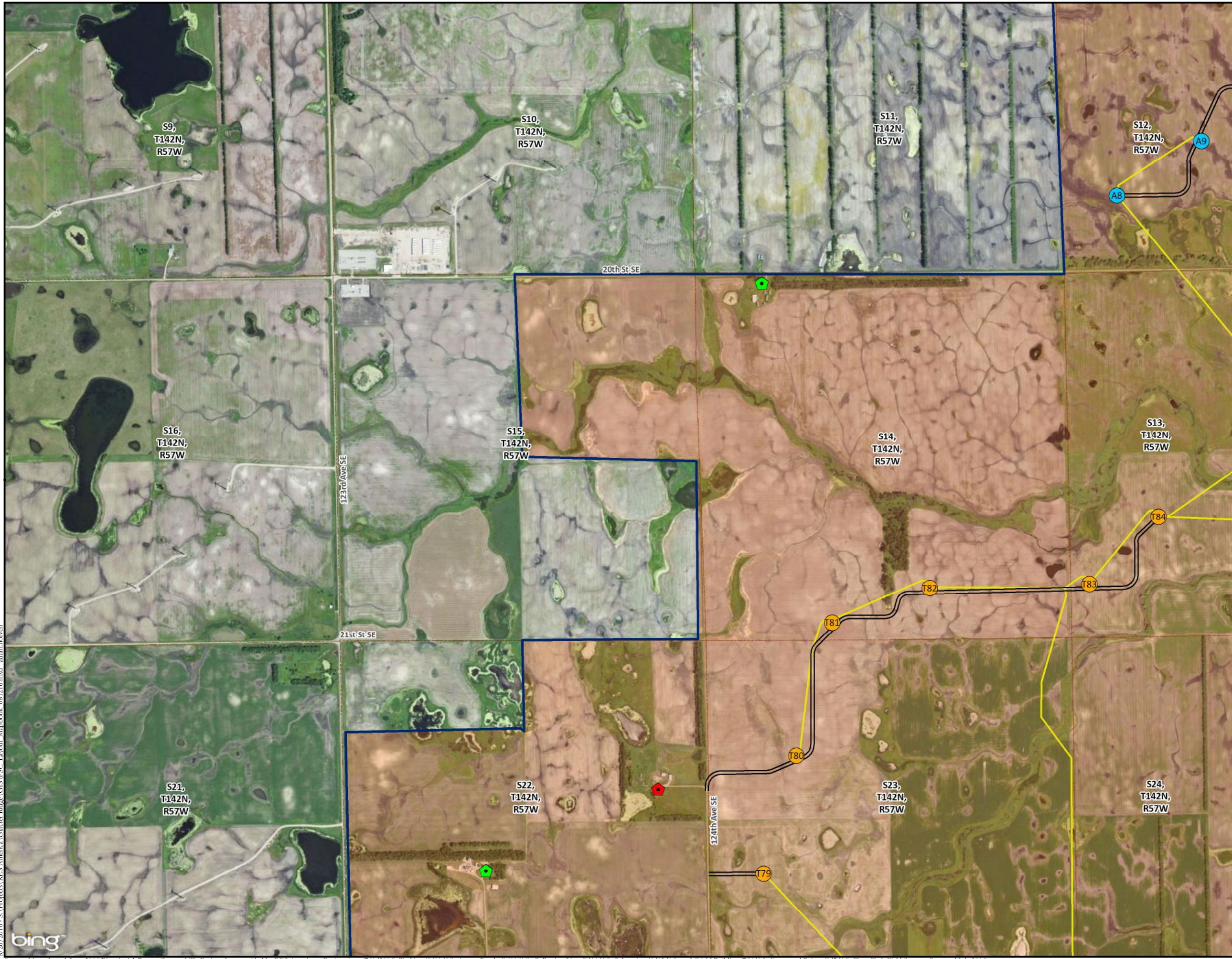
8/26/2016 - S:\Projects\RES America\Glacier Ridge\GIS\PSC_Layout_Mapbook_081216.mxd - adam.holven

Source: Map adapted from 2016 Bing Aerial, Barnes County, ND; Project data provided by RES Americas - Project Area (7/1/2016), Turbine (8/11/16), Access Roads (8/11/16), Collection Line (8/11/16), Substation (6/13/16), and O&M Building (7/6/16), Farmstead Points (8/5/16); Tetra Tech Field Surveys (June and July 2016).

Glacier Ridge Wind Farm

Barnes County, North Dakota

Map Page - 4



Project Area

Proposed Project Area (7/1/16)

Proposed Project Facilities

Proposed Turbine (8/11/16)

Alternate Turbine (8/11/16)

Proposed Service Road (8/11/16)

Proposed Collection Line (8/11/16)

Proposed Met Tower (6/13/16)

Proposed O&M Building (7/6/16)

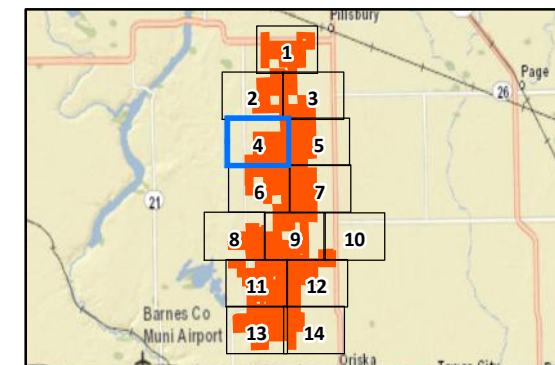
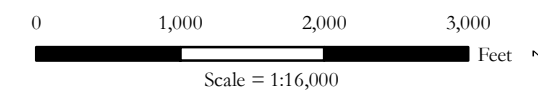
Residences

Participating (8/5/16)

Not Participating (8/5/16)

Non-Project Layers

PLSS Boundary



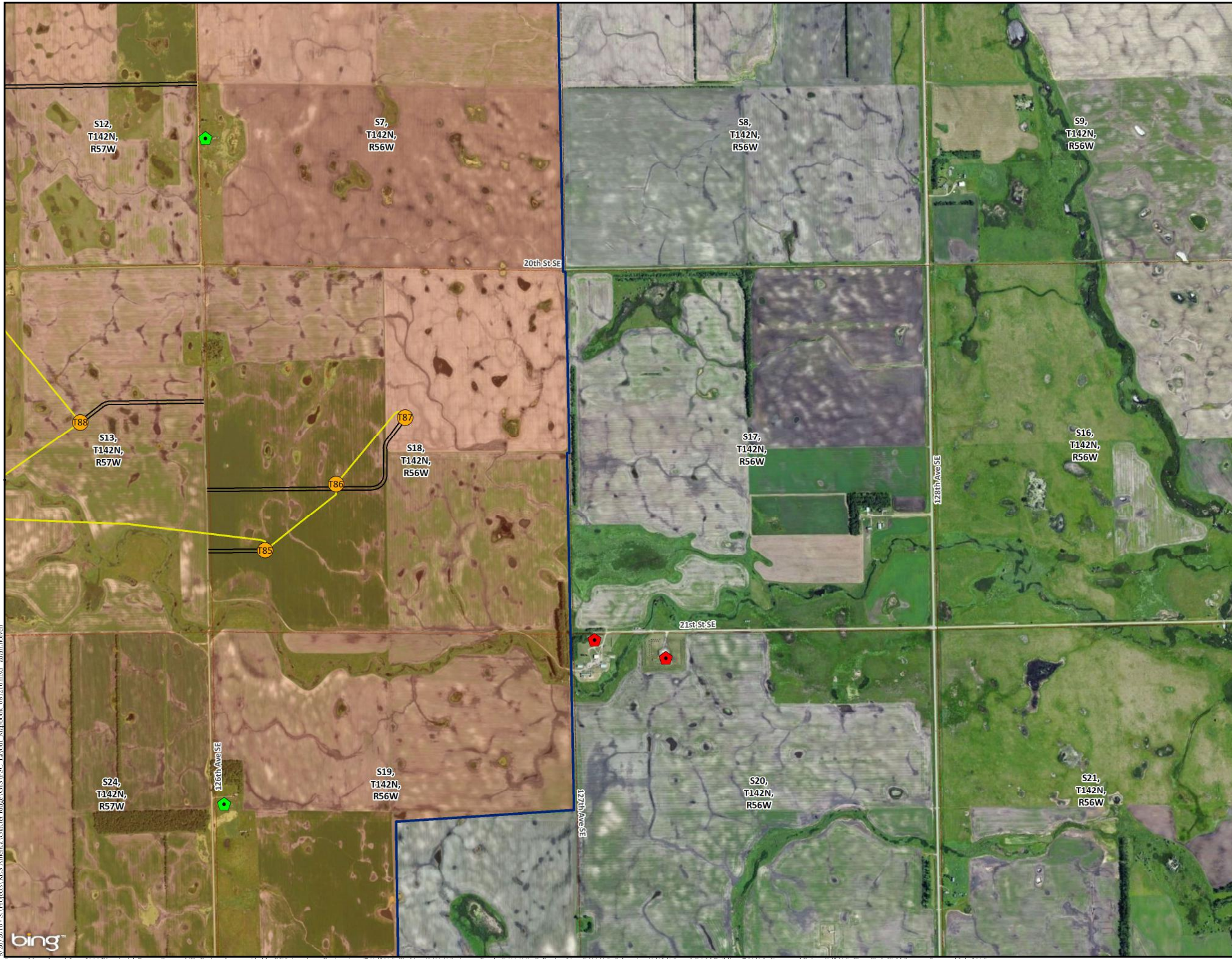
8/26/2016 - S:\Projects\RES America\Glacier Ridge\GIS\PSC_Layout_Mapbook_081216.mxd adam.holven

Source: Map adapted from 2016 Bing Aerial, Barnes County, ND; Project data provided by RES Americas - Project Area (7/1/2016), Turbine (8/11/16), Access Roads (8/11/16), Collection Line (8/11/16), Substation (6/13/16), and O&M Building (7/6/16), Farmstead Points (8/5/16); Tetra Tech Field Surveys (June and July 2016).

Glacier Ridge Wind Farm

Barnes County, North Dakota

Map Page - 5



Project Area

Proposed Project Area (7/1/16)

Proposed Project Facilities

Proposed Turbine (8/11/16)

Alternate Turbine (8/11/16)

Proposed Service Road (8/11/16)

Proposed Collection Line (8/11/16)

Proposed Met Tower (6/13/16)

Proposed O&M Building (7/6/16)

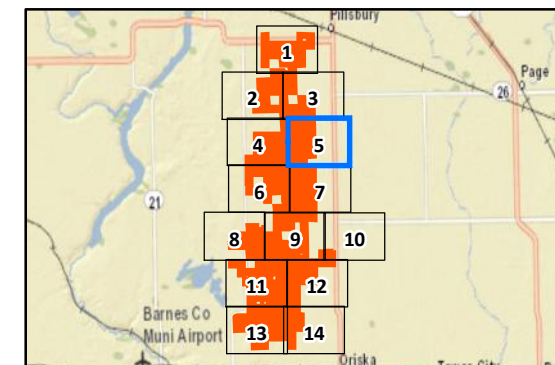
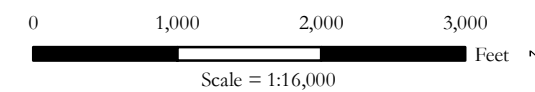
Residences

Participating (8/5/16)

Not Participating (8/5/16)

Non-Project Layers

PLSS Boundary

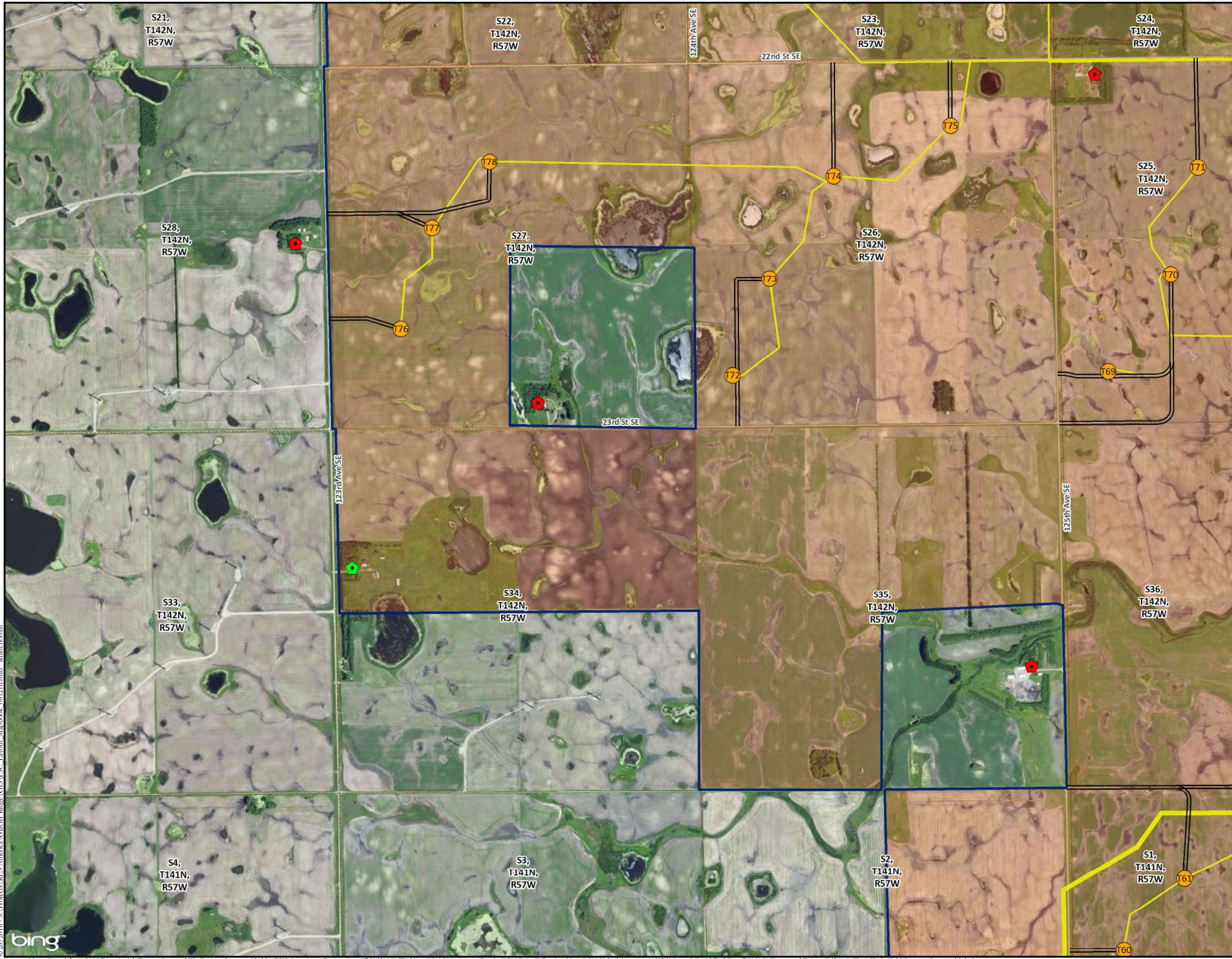


8/26/2016 - S:\Projects\RES America\Glacier Ridge\GIS\PSC_Layout_Mapbook_081216.mxd adam.holven

Glacier Ridge Wind Farm

Barnes County, North Dakota

Map Page - 6



Project Area

Proposed Project Area (7/1/16)

Proposed Project Facilities

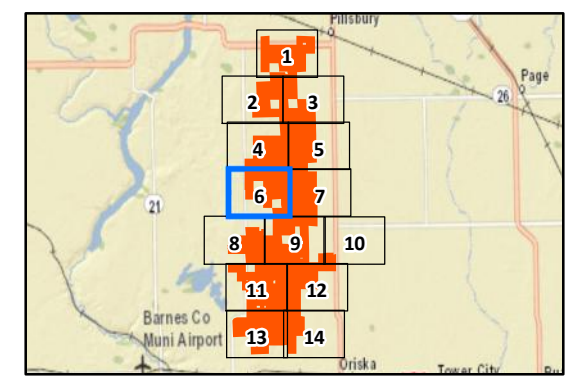
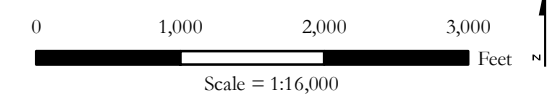
- Proposed Turbine (8/11/16)
- Alternate Turbine (8/11/16)
- Proposed Service Road (8/11/16)
- Proposed Collection Line (8/11/16)
- Proposed Met Tower (6/13/16)
- Proposed O&M Building (7/6/16)

Residences

- Participating (8/5/16)
- Not Participating (8/5/16)

Non-Project Layers

- PLSS Boundary



8/26/2016 - S:\Projects\RES America\Glacier Ridge\GIS\PSC_Layout_Mapbook_081216.mxd adam.holven

Source: Map adapted from 2016 Bing Aerial, Barnes County, ND; Project data provided by RES Americas - Project Area (7/1/16), Turbine (8/11/16), Access Roads (8/11/16), Collection Line (8/11/16), Substation (6/13/16), and O&M Building (7/6/16), Farmstead Points (8/5/16); Tetra Tech Field Surveys (June and July 2016).

Glacier Ridge Wind Farm


Barnes County, North Dakota


Map Page - 7

Project Area

 Proposed Project Area (7/1/16)

Proposed Project Facilities

 Proposed Turbine (8/11/16)

 Alternate Turbine (8/11/16)

 Proposed Service Road (8/11/16)

 Proposed Collection Line (8/11/16)

 Proposed Met Tower (6/13/16)


 Proposed O&M Building (7/6/16)

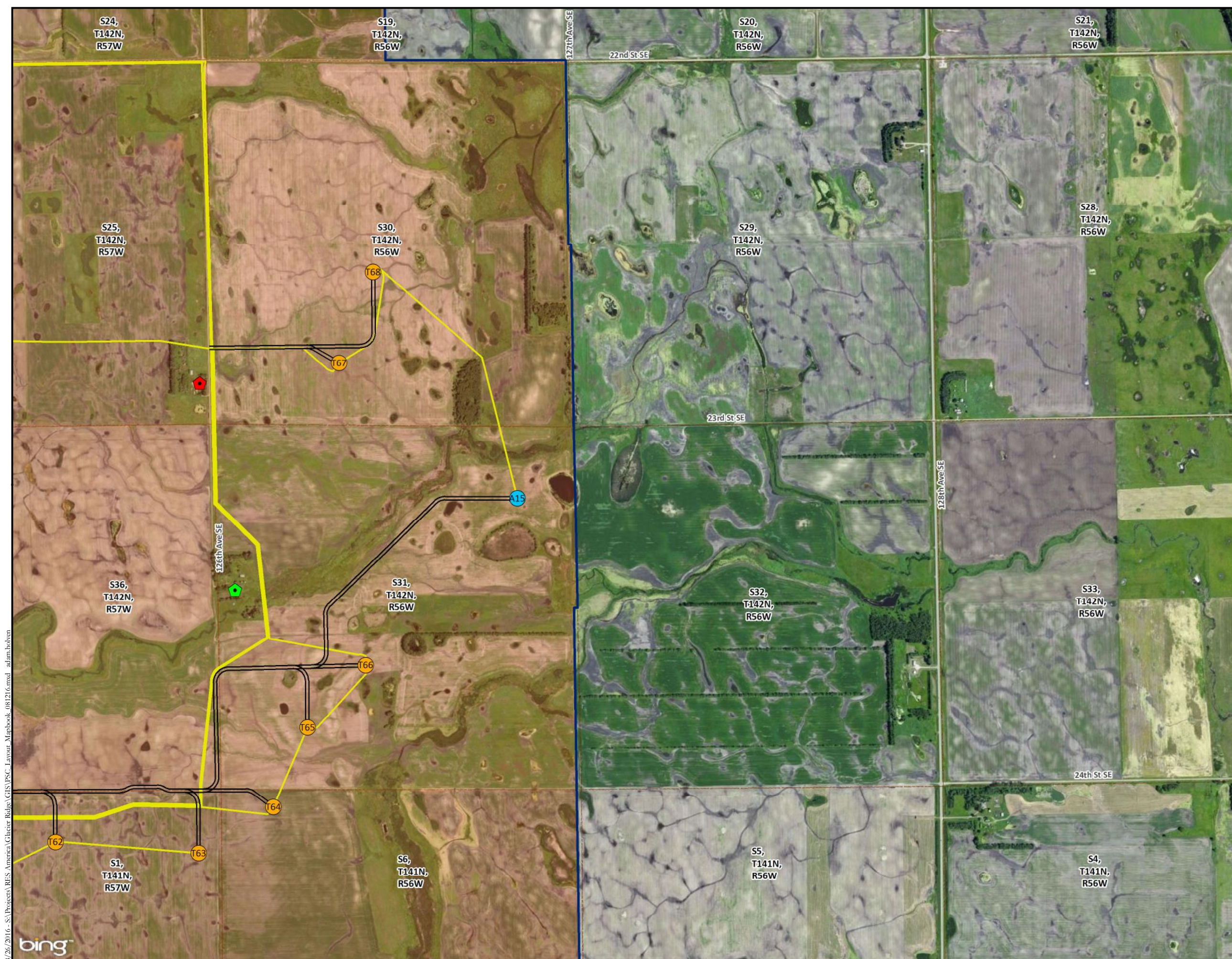
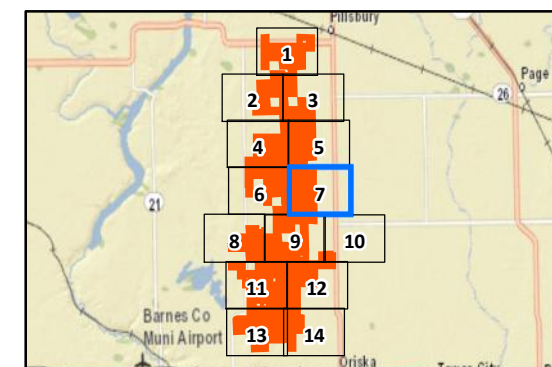
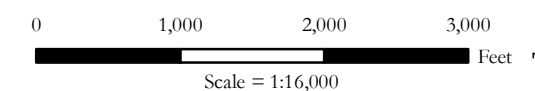
Residences

 Participating (8/5/16)

 Not Participating (8/5/16)

Non-Project Layers

 PLSS Boundary

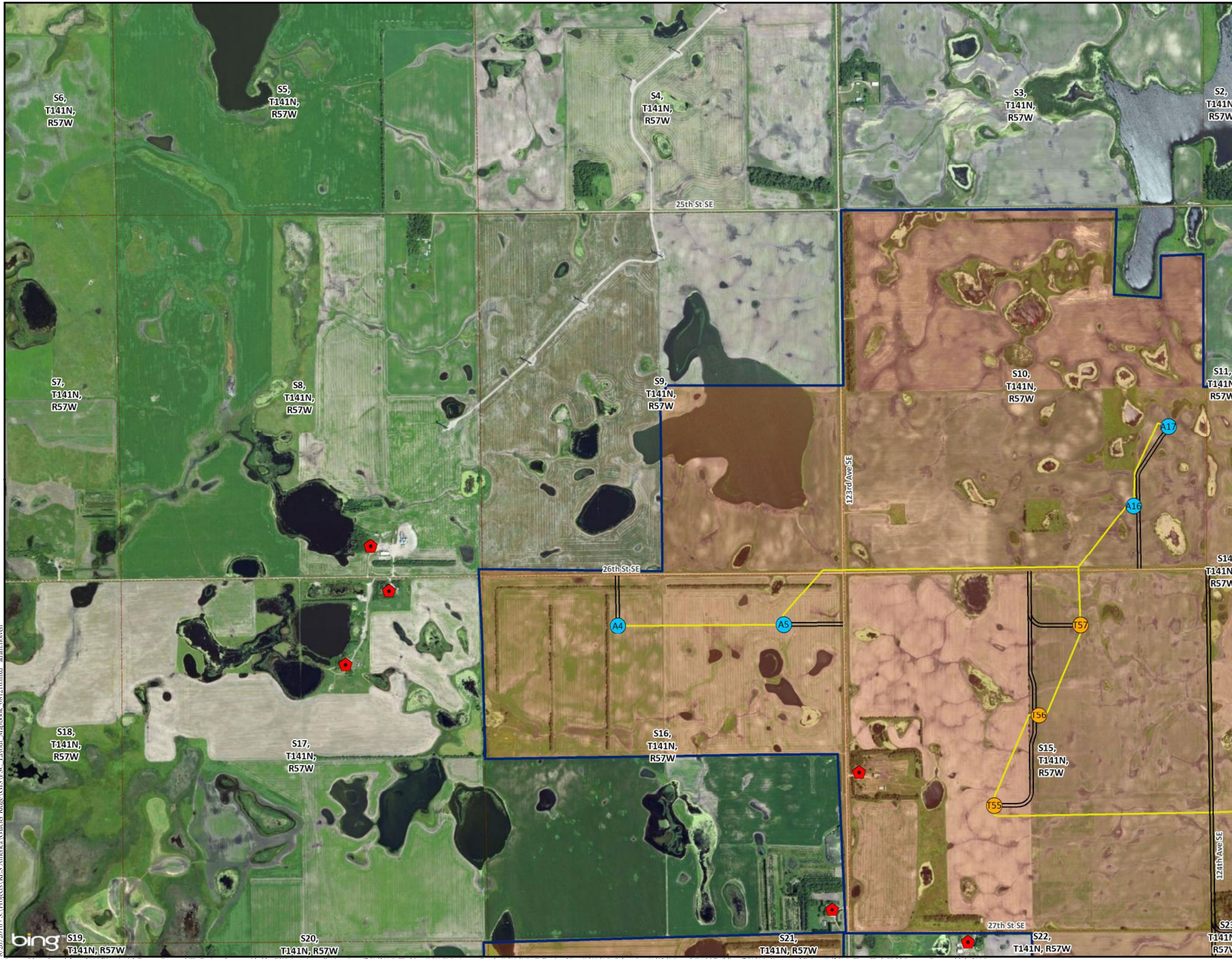


8/26/2016 - S:\Projects\RES America\Glacier Ridge\GIS\PSC_Layout_Mapbook_081216.mxd adam.holven

Glacier Ridge Wind Farm

Barnes County, North Dakota

Map Page - 8



Project Area

Proposed Project Area (7/1/16)

Proposed Project Facilities

Proposed Turbine (8/11/16)

Alternate Turbine (8/11/16)

Proposed Service Road (8/11/16)

Proposed Collection Line (8/11/16)

Proposed Met Tower (6/13/16)

Proposed O&M Building (7/6/16)

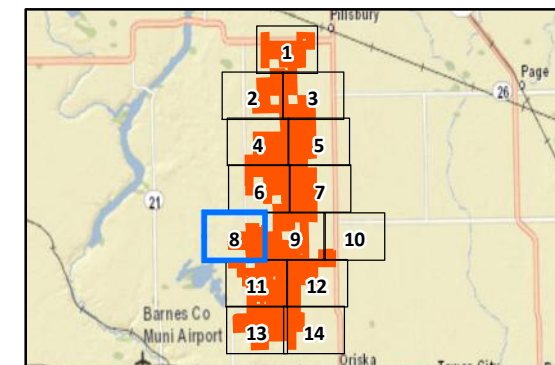
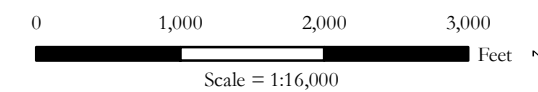
Residences

Participating (8/5/16)

Not Participating (8/5/16)

Non-Project Layers

PLSS Boundary



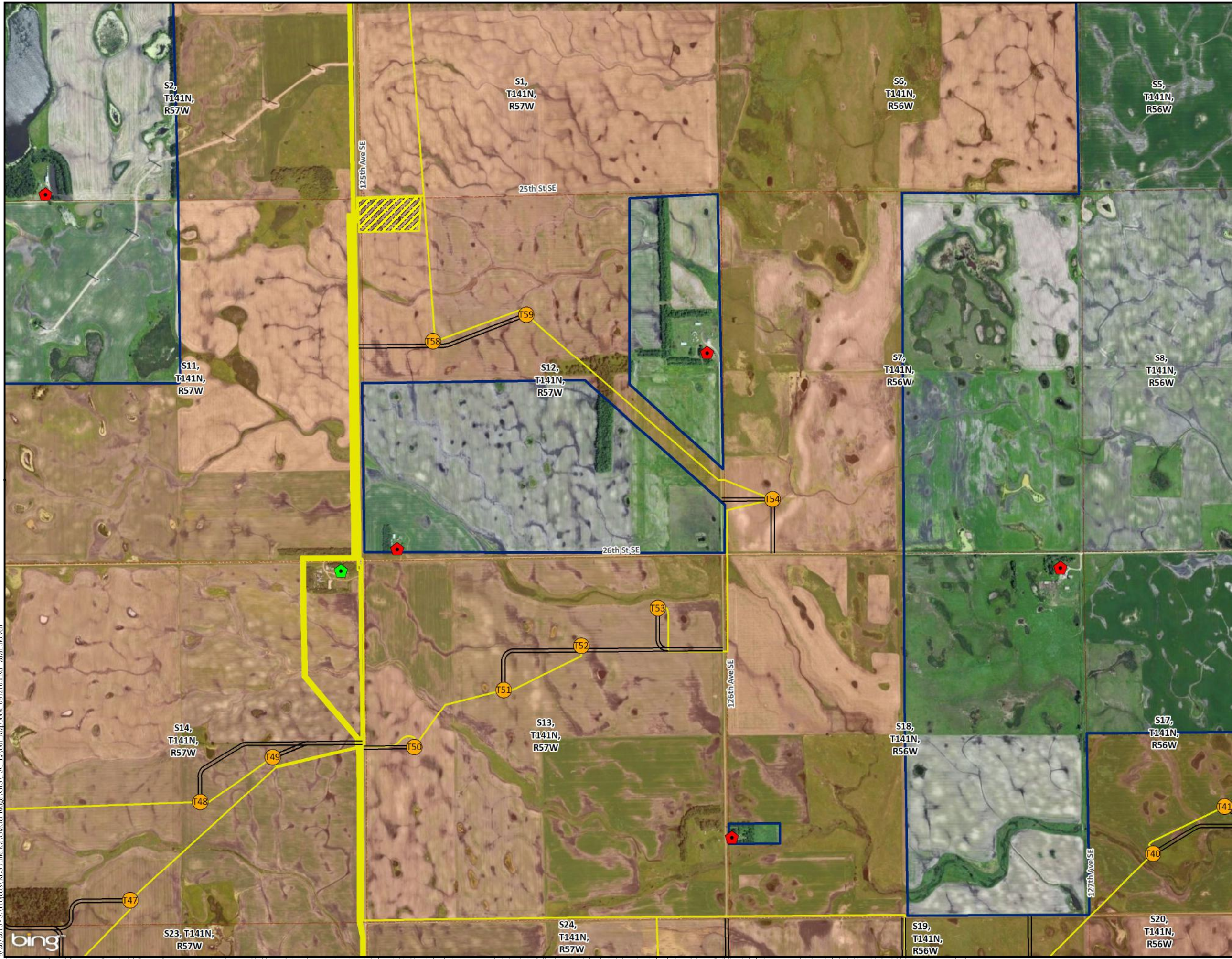
8/26/2016 - S:\Projects\RES America\Glacier Ridge\GIS\PSC_Layout_Mapbook_081216.mxd adam.holven

Source: Map adapted from 2016 Bing Aerial, Barnes County, ND; Project data provided by RES Americas - Project Area (7/1/2016), Turbine (8/11/16), Access Roads (8/11/16), Collection Line (8/11/16), Substation (6/13/16), and O&M Building (7/6/16), Farmstead Points (8/5/16); Tetra Tech Field Surveys (June and July 2016).

Glacier Ridge Wind Farm

Barnes County, North Dakota

Map Page - 9



Project Area

Proposed Project Area (7/1/16)

Proposed Project Facilities

Proposed Turbine (8/11/16)

Alternate Turbine (8/11/16)

Proposed Service Road (8/11/16)

Proposed Collection Line (8/11/16)

Proposed Met Tower (6/13/16)

Proposed O&M Building (7/6/16)

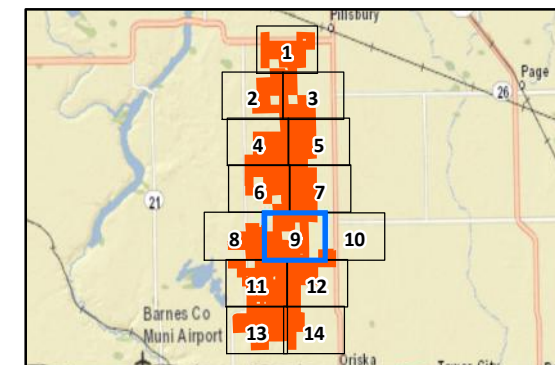
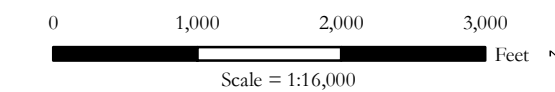
Residences

Participating (8/5/16)

Not Participating (8/5/16)

Non-Project Layers

PLSS Boundary

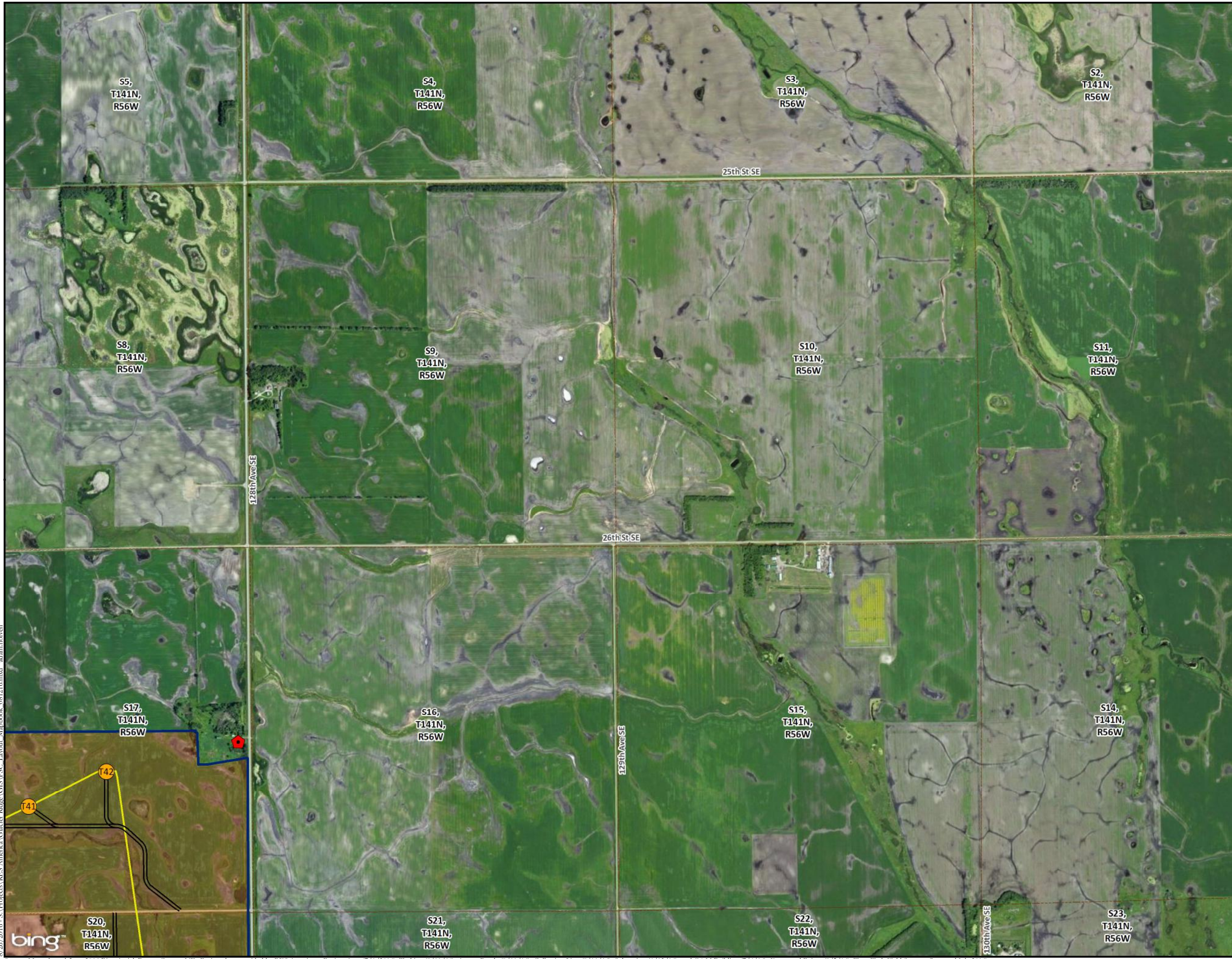


8/26/2016 - S:\Projects\RES America\Glacier Ridge\GIS\PSC_Layout_Mapbook_081216.mxd adam.holven
 Source: Map adapted from 2016 Bing Aerial, Barnes County, ND; Project data provided by RES Americas - Project Area (7/1/2016), Turbine (8/11/16), Access Roads (8/11/16), Collection Line (8/11/16), Substation (6/13/16), and O&M Building (7/6/16), Farmstead Points (8/5/16); Tetra Tech Field Surveys (June and July 2016).

Glacier Ridge Wind Farm

Barnes County, North Dakota

Map Page - 10



Project Area

Proposed Project Area (7/1/16)

Proposed Project Facilities

Proposed Turbine (8/11/16)

Alternate Turbine (8/11/16)

Proposed Service Road (8/11/16)

Proposed Collection Line (8/11/16)

Proposed Met Tower (6/13/16)

Proposed O&M Building (7/6/16)

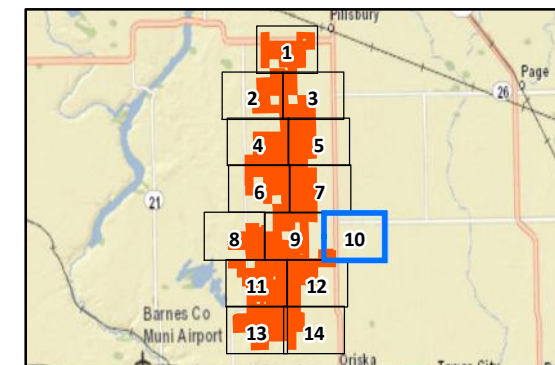
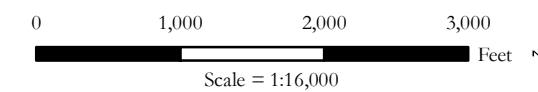
Residences

Participating (8/5/16)

Not Participating (8/5/16)

Non-Project Layers

PLS Boundary



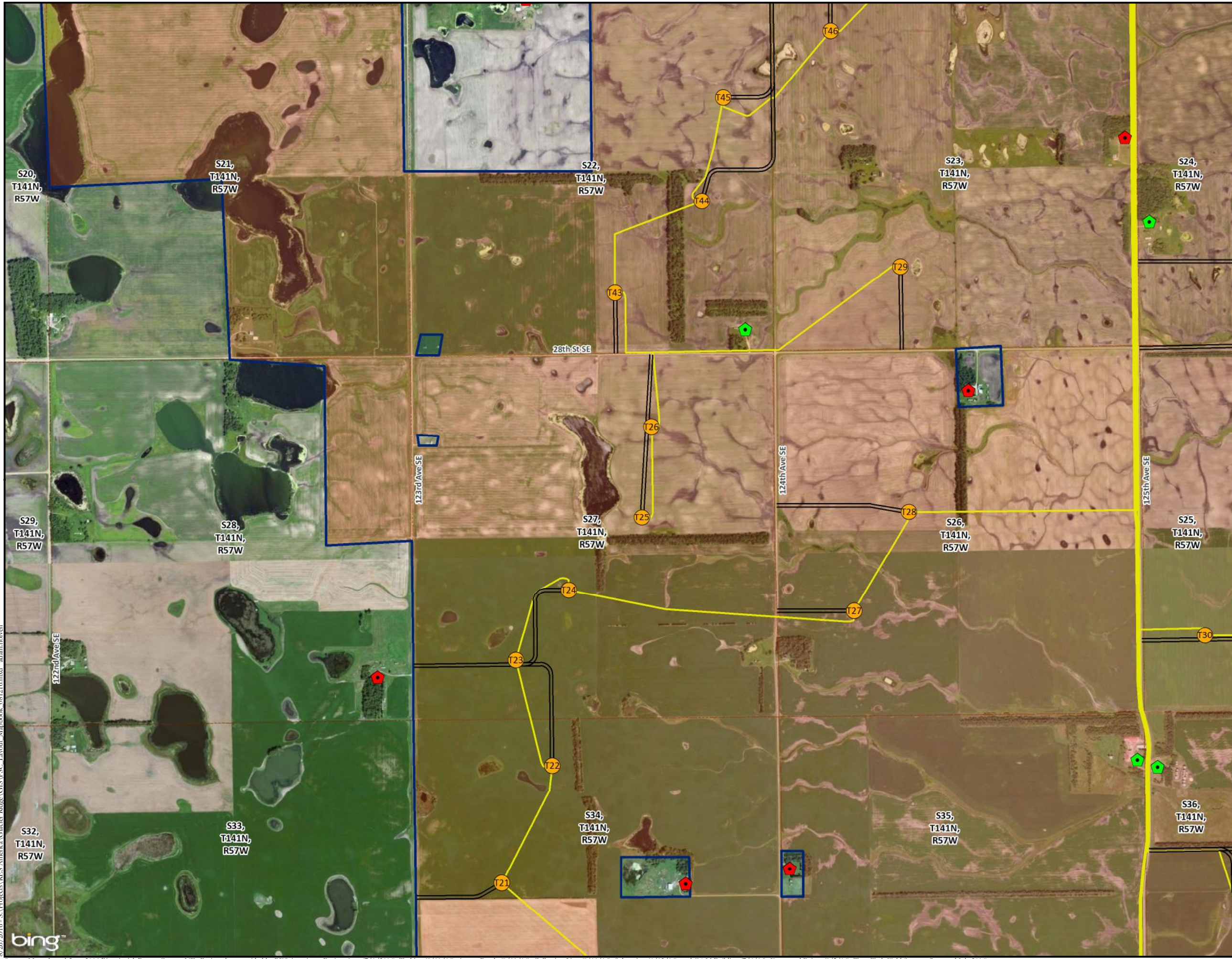
8/26/2016 - S:\Projects\RES America\Glacier Ridge\GIS\PSC - Layout - Mapbook_081216.mxd adam.holven

Source: Map adapted from 2016 Bing Aerial, Barnes County, ND; Project data provided by RES Americas - Project Area (7/1/16), Turbine (8/11/16), Access Roads (8/11/16), Collection Line (8/11/16), Substation (6/13/16), and O&M Building (7/6/16), Farmstead Points (8/5/16); Tetra Tech Field Surveys (June and July 2016).

Glacier Ridge Wind Farm

Barnes County, North Dakota

Map Page - 11



Project Area

Proposed Project Area (7/1/16)

Proposed Project Facilities

Proposed Turbine (8/11/16)

Alternate Turbine (8/11/16)

Proposed Service Road (8/11/16)

Proposed Collection Line (8/11/16)

Proposed Met Tower (6/13/16)

Proposed O&M Building (7/6/16)

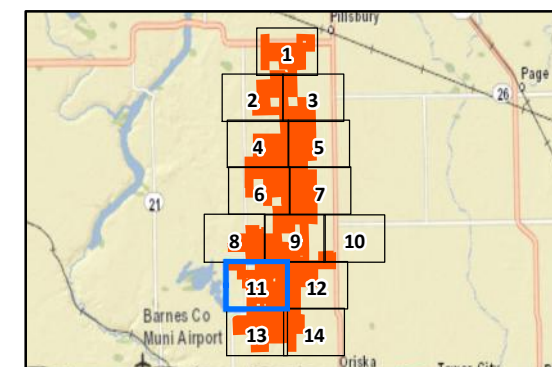
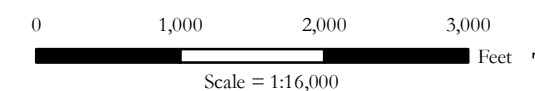
Residences

Participating (8/5/16)

Not Participating (8/5/16)

Non-Project Layers

PLSS Boundary



8/26/2016 - S:\Projects\RES America\Glacier Ridge\GIS\PSC_Layout_Mapbook_081216.mxd adam.holven



Glacier Ridge Wind Farm


Barnes County, North Dakota


Map Page - 12

Project Area

 Proposed Project Area (7/1/16)

Proposed Project Facilities

 Proposed Turbine (8/11/16)

 Alternate Turbine (8/11/16)


 Proposed Service Road (8/11/16)

 Proposed Collection Line (8/11/16)

 Proposed Met Tower (6/13/16)


 Proposed O&M Building (7/6/16)

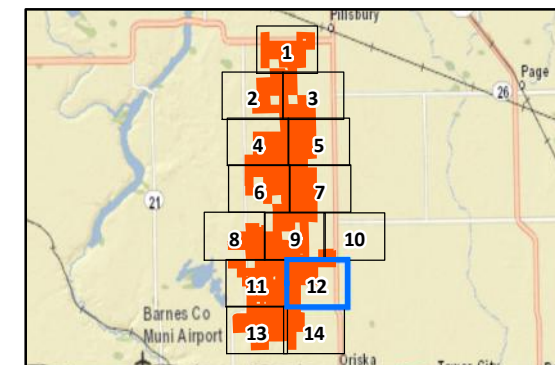
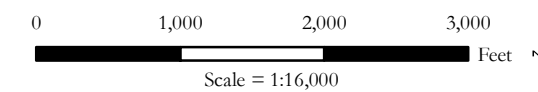
Residences

 Participating (8/5/16)

 Not Participating (8/5/16)

Non-Project Layers

 PLSS Boundary

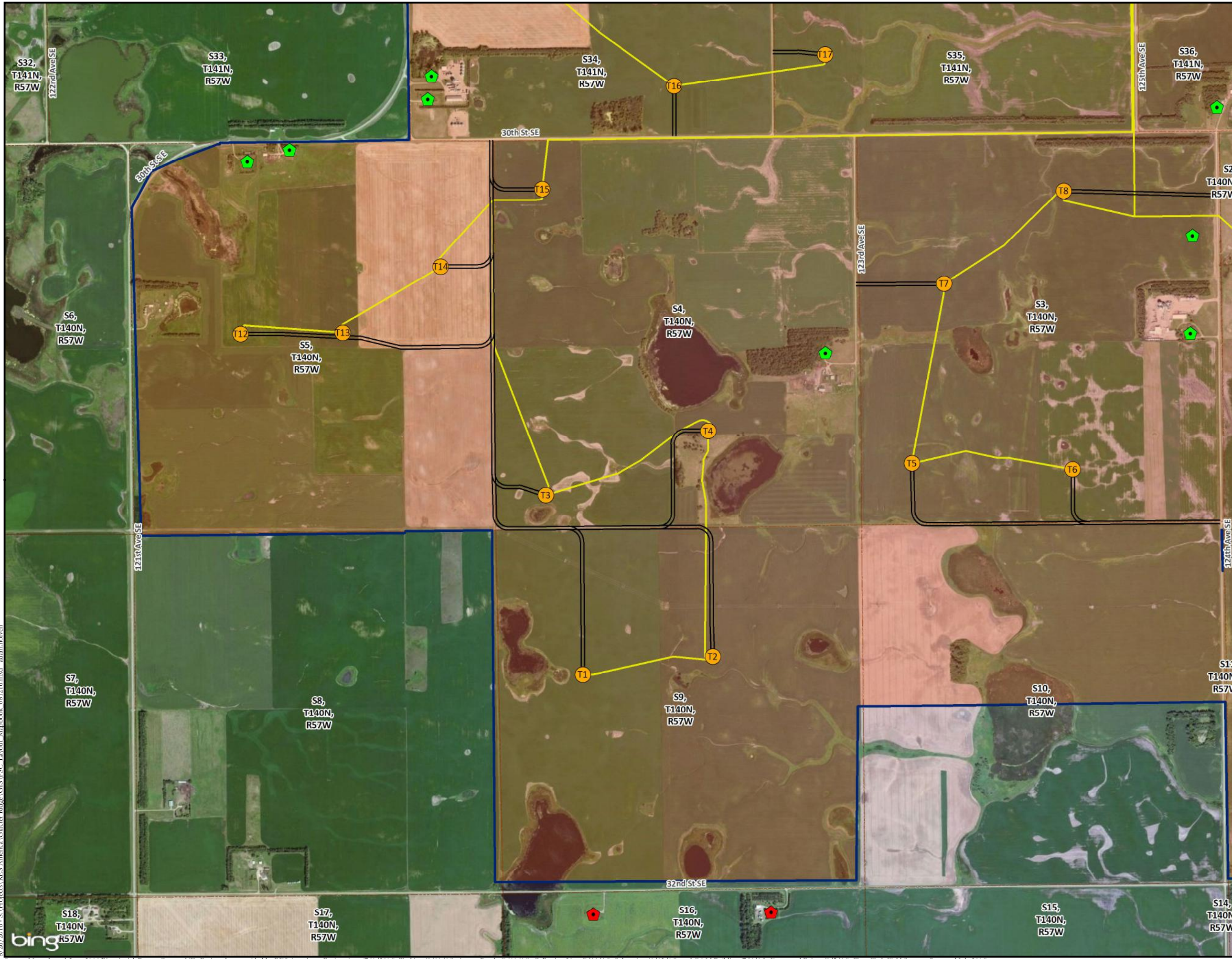


8/26/2016 - S:\Projects\RES America\Glacier Ridge\GIS\PSC Layout - Mapbook_081216.mxd adam.holven
Source: Map adapted from 2016 Bing Aerial, Barnes County, ND; Project data provided by RES Americas - Project Area (7/1/16), Turbine (8/11/16), Access Roads (8/11/16), Collection Line (8/11/16), Substation (6/13/16), and O&M Building (7/6/16), Farmstead Points (8/5/16); Tetra Tech Field Surveys (June and July 2016).

Glacier Ridge Wind Farm

Barnes County, North Dakota

Map Page - 13



Project Area

Proposed Project Area (7/1/16)

Proposed Project Facilities

Proposed Turbine (8/11/16)

Alternate Turbine (8/11/16)

Proposed Service Road (8/11/16)

Proposed Collection Line (8/11/16)

Proposed Met Tower (6/13/16)

Proposed O&M Building (7/6/16)

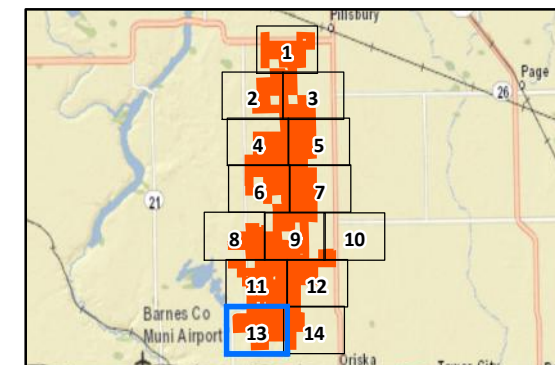
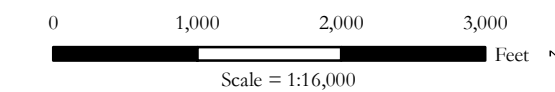
Residences

Participating (8/5/16)

Not Participating (8/5/16)

Non-Project Layers

PLSS Boundary



8/26/2016 - S:\Projects\RES America\Glacier Ridge\GIS\PSC_Layout_Mapbook_081216.mxd adam.holven

Source: Map adapted from 2016 Bing Aerial, Barnes County, ND; Project data provided by RES Americas - Project Area (7/1/16), Turbine (8/11/16), Access Roads (8/11/16), Collection Line (8/11/16), Substation (6/13/16), and O&M Building (7/6/16), Farmstead Points (8/5/16); Tetra Tech Field Surveys (June and July 2016).

Glacier Ridge Wind Farm


Barnes County, North Dakota


Map Page - 14

Project Area

 Proposed Project Area (7/1/16)

Proposed Project Facilities

 Proposed Turbine (8/11/16)

 Alternate Turbine (8/11/16)


 Proposed Service Road (8/11/16)

 Proposed Collection Line (8/11/16)

 Proposed Met Tower (6/13/16)


 Proposed O&M Building (7/6/16)

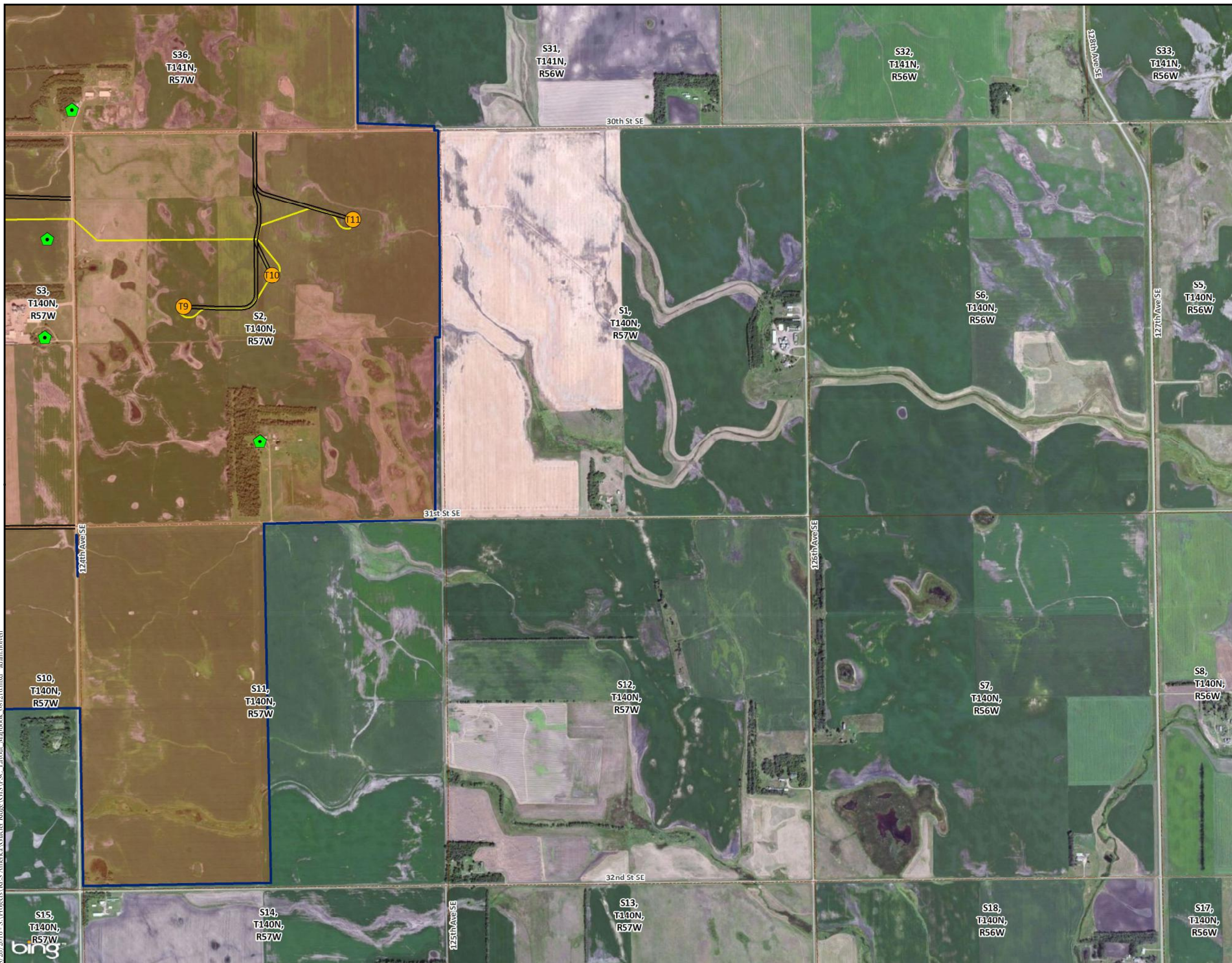
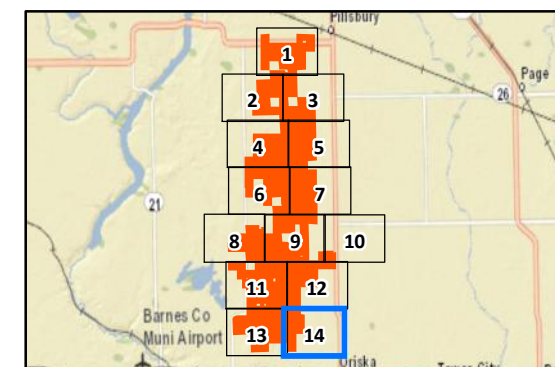
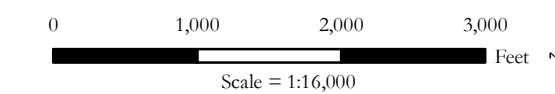
Residences

 Participating (8/5/16)

 Not Participating (8/5/16)

Non-Project Layers

 PLSS Boundary



8/26/2016 - S:\Projects\RES America\Glacier Ridge\GIS\PSC_Layout_Mapbook_081216.cmxd adam.holven
 Source: Map adapted from 2016 Bing Aerial, Barnes County, ND; Project data provided by RES Americas - Project Area (7/1/2016), Turbine (8/11/16), Access Roads (8/11/16), Collection Line (8/11/16), Substation (6/13/16), and O&M Building (7/6/16), Farmstead Points (8/5/16); Tetra Tech Field Surveys (June and July 2016).