



EMERGENCY ACTION PLAN

DIVIDE AREA – Brett Rieniets, OPS MANAGER



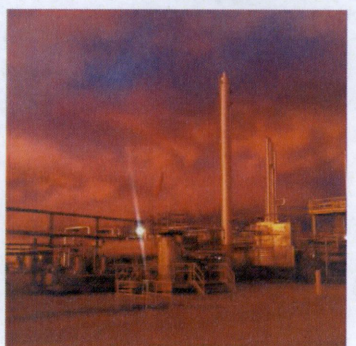
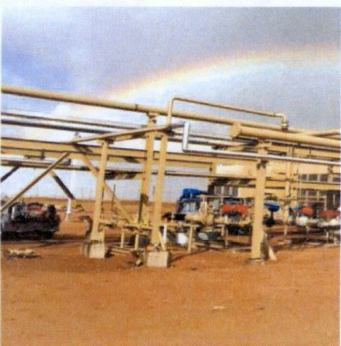
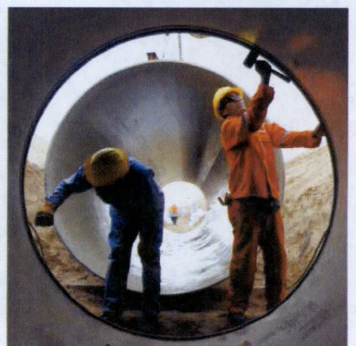
**Safety is a
Company
Committment**



**Team Effort, &
Personal
Responsibility**




**SAFETY
FIRST**



IN CASE OF AN EMERGENCY CALL

1-888-643-7929



	Summit Midstream Partners	Revision Number: 1
	Emergency Action Plan	Effective Date: 01/2016

AREAS COVERED BY THIS PLAN

This Emergency Action Plan will cover the Summit Midstream assets located in the following counties, facilities, and stations.

DIVIDE AREA Brett Rieniets, Operations Manager Stacy Zerr, Sr. Health & Safety Specialist		
NORTH DAKOTA		
COUNTY	FACILITY/STATION	MANNED / UNMANNED
Burke County	Stampede	UNMANNED
Divide County	Sampson Truck Unloading Terminal	UNMANNED
Divide County	Divide Station / SME Oil Terminal	UNMANNED
Williams County	Epping Station	UNMANNED
Williams County	Little Muddy	UNMANNED
Williams County	Wheelock	UNMANNED

TABLE OF CONTENTS


1.	EMERGENCY ACTION PLAN	1-1
1.1	Executive Summary.....	1-1
1.2	Plan Activation	1-1
1.3	Hazard Recognition, Prevention, and Training	1-2
1.3.1	Potential Hazards.....	1-2
1.3.2	Training	1-2
2.0	EMERGENCY INCIDENT OPERATING GUIDELINES.....	2-1
3.0	INCIDENT TYPES.....	3-1
3.1	Summary of Incident Types	3-1
3.2	Medical.....	3-1
3.3	Small Product Release or Spill.....	3-2
3.4	Large Product Release or Spill.....	3-3
4.0	FACILITY / STATION SPECIFIC INFORMATION	4-1
4.1	Facility / Station Specific Information.....	4-1
4.2	Summit Midstream Partners Contacts.....	4-1
4.3	Contractors	4-3
4.4	Local Municipal Contacts	4-3
4.5	Facility Process Overview.....	4-4
4.6	Alarms	4-7
4.7	Valves	4-9
4.8	Potential Products and Data Sheets	4-10
4.9	Facility Evacuation Maps.....	4-11
	Divide County, North Dakota – Sampson Truck Unloading Terminal.....	4-11
5.0	FEDERAL AND STATE AGENCIES CONTACT INFORMATION.....	5-1
5.1	Federal Agencies	5-1
5.2	State Agencies.....	5-1
6.1.	ANNUAL REVIEW AND DOCUMENT CHANGE LOG	6-1
APPENDIX A – FORMS		A-1
–	ERF-000 General Message	
–	ERF-001 ICS Organization Chart	

	Summit Midstream Partners	Revision Number: 1
	Emergency Action Plan	Effective Date: 01/2016

- ERF-002 Site Safety and Action Plan
- ERF-004 Incident Log
- ERF-005 Personnel Roster
- ERF-006 Staging Form
- ERF-007 Emergency Scene Map Sketch

APPENDIX B – PRODUCT DATA SHEETS B-1

- Crude Oil
- Methanol
- Natural Gas
- Produced Water
- Y-GRADE (Demethanized Mix

	Summit Midstream Partners	Revision Number: 1
	Emergency Action Plan	Effective Date: 01/2016

1. EMERGENCY ACTION PLAN

1.1 Executive Summary

Summit Midstream operates a pipeline and/or facility in the areas shown on page iii of this plan.

This Emergency Action Plan is to assist in planning and responding to a suspected or actual emergency involving the company's pipeline or facility in the areas shown on page iii of this plan.

The safety of employees, contractors, visitors, responding personnel and the surrounding population is critical in every emergency response. Generally, the products contained in the pipeline or facility are highly volatile when released. With this in mind, it is critical for emergency responders to train their personnel on the proper response to a suspected or actual emergency.

Summit employees are required to be trained on the Emergency Action Plan. Each employee should be familiar with the plan and their duties under the plan. Employees who need more information about the plan or an explanation of their duties under the plan should first contact their immediate supervisor. The employees may also contact the Area Supervisor, Facility Manager or Area Health & Safety Representative identified by name and job title in **Sections 13.1 and 14.1** of this Emergency Action Plan.

This document is "controlled" with an effective date and revision number in the header. As revisions or updates are received please destroy prior plans.

1.2 Plan Activation

Any operational or maintenance activity defined as abnormal in the Summit Midstream Procedures Manual for Pipeline Operations, Maintenance, and Emergencies (O&M Manual) requires immediate attention as an emergency condition may develop.

This plan recognizes that the following types of on-site emergencies may occur, and as such, the emergency action plan shall be implemented.

- Medical Emergencies
- Small Release or Spill
- Large Release or Spill
- Fire
- Security or Bomb Threat
- Natural Disasters
 - Flooding
 - Tornadoes
 - Hurricanes
 - Extreme Winter Weather (Ice/Snow)
 - Earthquakes and Subsidence

Refer to **Section 3**, Incident Types of this Emergency Action Plan, for actions to be taken in response to each incident type.

1.3 Hazard Recognition, Prevention, and Training

1.3.1 Potential Hazards

The products that may be present in these Summit facilities or pipelines are listed in **Table 1** Potential Products.

These products may be highly flammable and combustible products; the vapors of which may form explosive mixtures in the air. Corrosive materials may also be onsite to treat these products. Extreme caution should always be used in any emergency response dealing with these products and materials.

Please consult with Summit personnel for hazard information regarding specific products or materials, and refer to:

- Safety Data Sheets (SDS) – Available upon request from Summit Personnel
- DOT Emergency Response Guide Book (ERG)
- NIOSH Pocket Guide
- Other appropriate informational material

Table 1 – Potential Products

POTENTIAL PRODUCTS			
Product Name	ERG Number	UN Number	Potential Locations
Crude Oil	115	1075	All locations listed on page iii of this plan.
Methanol	131	1230	All locations listed on page iii of this plan.
Natural Gas	115	1971/1972	All locations listed on page iii of this plan.
Produced Water	N/A	N/A	All locations listed on page iii of this plan.
Y Grade	115	1954	All locations listed on page iii of this plan.

1.3.2 Training

Emergency Action Plan (EAP)

Facility personnel have been trained and receive continuing training to recognize an emergency situation. This is accomplished through monthly safety meetings, computer based training, and participating in table-top emergency response drills which simulate potential facility emergency situations.

The Objective of the training is to create awareness and enhance the skills required to develop, implement, maintain, and execute this Emergency Action Plan.

Summit Management Personnel as identified in Section 4, will review this Emergency Action Plan with each employee covered by the Plan at the following times:

- Upon initial development of the Plan
- Upon initial employment of the field employee

	Summit Midstream Partners	Revision Number: 1
	Emergency Action Plan	Effective Date: 01/2016

- When an employee's responsibilities or designated actions under the Plan change
- When the Plan is revised

Evacuation Wardens

Supervisors must be trained as evacuation wardens to assist in a safe and orderly evacuation of other employees as described in **Section 1.5.2** of this plan.

- The employees selected or who volunteer to serve as wardens should be trained in the complete workplace layout and the various alternative escape routes from the workplace.
- All wardens and fellow employees should be made aware of handicapped employees who may need extra assistance, such as using the buddy system, and of hazardous areas to be avoided during emergencies.
- The Supervisor shall forward documentation of all training to the Health and Safety Department. Training records shall be maintained by the Health and Safety Department.



2.0 EMERGENCY INCIDENT OPERATING GUIDELINES

Summit has adopted fifteen (15) standard Emergency Incident Operating Guidelines for response to emergency incidents.

1. **Notification** – The Pipeline or Facility Controller is notified first and he/she will then contact local emergency response agencies and local employees for assistance.
2. **Safely Evacuate or Respond** – Upwind, uphill and upgrade of the incident.
3. **Isolate and Deny Access/Entry** – Do not allow anyone to enter or access the hazard area by using banner tape, vehicles, or emergency response personnel unless directed to do so by the IC.
4. **Command** – Initiate ICS and appoint a SO; initiate perimeter control.
5. **Identification of Hazards** – Identify the hazards involved in the emergency.
6. **Assessment/Action Plan** – A written Emergency Response Site Safety and Action Plan, **Summit Form ERF-002**, must be developed and communicated to the entire response team through a field briefing.
7. **Protective Equipment** – Select PPE, establish control zones, and perform continuous air monitoring.
8. **Control** – Eliminate ignition sources and consider confinement/containment options.
9. **Protective Actions** – Evacuation/shelter-in-place options establish and maintain adequate safety zones for the duration of the incident.
10. **Decontamination** – Establish and provide an adequate level of decontamination.
11. **Disposal** – Ensure appropriate disposal of all recovered product(s) and contaminated soils.
12. **Termination** – Emergency phase closure, equipment status evaluation, personnel debriefing and assignments for post incident analysis.
13. **Medical** – Document exposures to personnel; give field medical evaluations to exposed personnel and recommendations for further medical attention.
14. **Documentation** – All necessary emergency phase documentation is gathered and secured.

	Summit Midstream Partners	Revision Number: 1
	Emergency Action Plan	Effective Date: 01/2016


3.0 INCIDENT TYPES

3.1 Summary of Incident Types

1. Medical Emergencies
2. Product Release or Spill
 - Small Release or Spill
 - Large Release or Spill
3. Fire
4. Security or Bomb Threat
5. Natural Disasters
 - Flooding
 - Tornadoes
 - Hurricanes
 - Extreme Winter Weather (Ice/Snow)
 - Earthquakes or Subsidence

3.2 Medical

1. Immediately call (911) for public emergency medical services
2. Immediately notify the Supervisor, Safety or Control Room
3. Activate the Incident Command System -- Follow directions of Incident Commander
4. Follow the Summit Notification Protocol; refer to Summit Midstream Safety Policies Manual **Section 2.1**
5. Use "Universal Precautions" for blood borne pathogens and infectious materials
6. Only provide the level of aid to which you are trained and qualified
7. Do not move the patient unless the current location is threatened with imminent danger
8. If Rescue is required -- Complete an Emergency Response Site Safety and Action Plan, **Summit Form ERF-002**, and communicate to personnel prior to any action, update as information or conditions change
9. Terminate the incident when told to do so by the Incident Commander
10. Dispose of material according to direction from the SDS and the Environmental Department.
11. Perform an Incident Investigation


	Summit Midstream Partners	Revision Number: 1
	Emergency Action Plan	Effective Date: 01/2016

3.3 Small Product Release or Spill

Note: It is generally considered that a Small Release is defined as a release or spill of less than 5 barrels of a “Highly Volatile Liquid.” (For more details see DOT ERG and 49 CFR 195.5)

This can be dependent upon the type of material and should be confirmed through the Environmental Department as to the characteristics of the material as well as the “Reportable Quantity” for the specific released material.

1. Immediately Notify Supervisor, Safety or Control Room.
2. Activate the Incident Command System -- Follow directions of Incident Commander.
3. Follow the Summit Notification Protocol; refer to Summit Midstream Safety Policies Manual **Section 2.1**.
4. Determine the wind direction.
5. Respond from upwind or crosswind and upgrade to the scene of the Incident.
6. Summit employees shall not perform any task in response to an emergency that exceeds their current level of training per **29 CFR 1910.120** and **Section 3.5.3.2** of this Emergency Action Plan.
7. Use monitors to check for hazardous atmosphere.
8. Identify source of release or spill and material type.
9. Determine if release or spill may be treated as a “Small Release” according to the MSDS exposure limits and other information.
10. Safely stop source of release or spill.
11. Contain material released.
12. Dispose of material according to direction from the MSDS and the Environmental Dept.
13. Terminate the incident when told to do so by the Incident Commander.
14. Perform an Incident Investigation per **Section 2.4** Incident Investigation of the HSE Procedures Manual.

	Summit Midstream Partners	Revision Number: 1
	Emergency Action Plan	Effective Date: 01/2016

3.4 Large Product Release or Spill

Note: It is generally considered that a Large Release is defined as a release or spill of 5 barrels, or more, of a “Highly Volatile Liquid;” or any product or chemical with characteristics that create immediate safety/health hazards or will migrate off-site.

(For more details see DOT ERG and 49 CFR 195.5)

This can be dependent upon the type of material and should be confirmed through the Environmental Department as to the characteristics of the material as well as the “Reportable Quantity” for the specific released material.


1. Immediately Notify Supervisor, Safety or Control Room.
2. Activate the appropriate facility alarm system to initiate evacuation.
3. Utilize the Department of Transportation Emergency Response Guidebook (ERG), as appropriate, to supplement known information during the initial response phase in determining the initial evacuation area.
4. Activate the Incident Command System -- Follow directions of Incident Commander.
5. Follow the Summit Notification Protocol; refer to Summit Midstream Safety Policies Manual **Section 2.1**
6. Call for outside assistance and notify public agencies as needed.
7. Obtain care for any injured personnel – see Medical **Section 4.2** of this plan.
8. Ensure that all personnel are accounted for and identify if any personnel are missing. Use the Evacuation Assembly Area Accountability form **Summit Form ERF-004**.
9. Activate Emergency Shut Down (ESD) and close remote valves as needed.
10. Attempt to identify source, magnitude, and duration of release or spill and material type, from a safe distance.
11. Determine the wind direction and speed as well as the slope of the terrain.
12. Complete Emergency Response Site Safety and Action Plan **Summit Form ERF-002** communicate to personnel prior to any action, update as information or conditions change.
13. Complete a Job Plan to outline required tasks needed to control and perform maintenance on the equipment or pipeline as needed.
14. Summit HSE Safety Policies, Summit Midstream Procedures Manual for Pipeline Maintenance and Emergencies (O&M Manual) and Equipment Maintenance Procedures will be followed.
15. Establish Control Zones using monitoring devices as described in **Section 1.5.3.4** of this plan.
16. Restrict access according to established Control Zones.
17. Summit employees shall not perform any task in response to an emergency that exceeds their current level of training per **29 CFR 1910.120(q)** and **Section 1.5.3.2** of this Emergency Action Plan.
18. Comply with PPE requirements established by the Safety Officer.
19. Use the “Buddy System” along with proper back-up.

Continued Next Page ⇒

	Summit Midstream Partners	Revision Number: 1
	Emergency Action Plan	Effective Date: 01/2016

3.4 Large Product Release or Spill (cont.)


20. Never enter a gas or vapor cloud or any other immediately dangerous area.
21. The trained Emergency Responders will attempt to contain and stop the release.
22. Terminate the incident as directed by the Incident Commander, as defined in the Summit Emergency Response Plan.
23. Sound the All-clear as directed to do so by the Incident Commander.
24. Dispose of any hazardous material according to direction from the SDS and the Environmental Department.
25. Remediate the area.
26. Perform an Incident Investigation.

	Summit Midstream Partners	Revision Number: 1
	Emergency Action Plan	Effective Date: 01/2016

4.0 FACILITY / STATION SPECIFIC INFORMATION

4.1 Facility / Station Specific Information

FACILITY / STATION SPECIFIC INFORMATION	
Facility/Station:	Stampede
County/State:	Burke County, ND
Phone:	N/A
Address:	10154 93 rd St. NW, Columbus, ND 58727
GPS:	48.27263797 -103.36078721
Directions:	From Columbus travel east on HWY 5 2 miles to 93 rd St NW turn south and travel .5 miles turn east onto access road into location.
Facility/Station:	Divide Station / SME Oil Terminal
County/State:	Divide County, ND
Phone:	N/A
Address:	13298 96th St. NW, Fortuna, ND 58844
GPS:	48.80562259 -103.61787201
Directions:	From Crosby travel west on HWY 5 to HWY 85 turn south and travel to 96th St NW turn east Divide Station is on the south side of the road.
Facility/Station:	Sampson Truck Unloading Terminal
County/State:	Divide County, ND
Phone:	N/A
Address:	10330 ND HWY 42 NW, Ambrose, ND 58833
GPS:	48.91216904 -103.48586458
Directions:	From Crosby, ND travel west on HWY 5 to HWY 42 turn north and Sampson Station is on the east side of the highway.
Facility/Station:	Epping Station
County/State:	Williams County, ND
Phone:	N/A
Address:	5919 123 rd Drive NW, Epping, ND 58843
GPS:	48.27263797 -103.36078721
Directions:	From Epping travel south on HWY 42 one half mile Epping Station is on the west side of the highway.
Facility/Station:	Little Muddy
County/State:	Williams County, ND
Phone:	N/A
Address:	6345 133 rd Ave NW, Williston, ND 58801
GPS:	48.33682568 -103.56333036
Directions:	From Williston travel north on HWY 2 for 13 miles then curve to the east continuing on HWY 2 travel 3 miles to 133 rd Ave NW turn south traveling approximately .5 miles location is on the west side of the road.

	Summit Midstream Partners	Revision Number: 1
	Emergency Action Plan	Effective Date: 01/2016

4.1 Facility / Station Specific Information (cont.)

FACILITY / STATION SPECIFIC INFORMATION	
Facility/Station:	Wheelock
County/State:	Williams County, ND
Phone:	N/A
Address:	
GPS:	48.37181509 -103.21085436
Directions:	From Ray travel north on Williams County 17 2 miles to 66 th St NW turn west and travel approximately 1.5 miles and location is on the north side of the road.

4.2 Summit Midstream Partners Contacts

SUMMIT PERSONNEL			
Name	Title	Office	Cell
Sean Kelly	Health & Safety Manager	832-608-6148	832-246-2506
Stacy Zerr	Sr. Health & Safety Specialist	701-264-3627	701-641-7501
Rick Smith - QI	VP of Operations	970-858-9210	970-901-7003
Cory Kline - QI	Director of Operations	970-895-2253	970-987-2527
Brett Rieniets	Operations Manager	701-264-3621	701-641-2354
Matt Stratmann	Director of Health, Safety & Regulatory	832-413-4769	832-610-6657
EJ Lachendro	Environmental	720-441-0241	303-578-2635


	Summit Midstream Partners	Revision Number: 1
	Emergency Action Plan	Effective Date: 01/2016

4.3 Contractors

CONTRACTORS			
Contractor	OSRO (Y/N)	Office	Cell
Absorbent & Safety Solutions	Yes	701-838-4558	

4.4 Local Municipal Contacts

BURKE COUNTY, NORTH DAKOTA		
Stampede		
Local Municipal Contacts		
Tioga Medical Center	P.O. Box 159 Tioga, ND 58852	701-664-3305
St. Luke's Hospital	702 First St. SW Crosby, ND 58730	701-965-6384
Columbus Rural Fire Department		701-939-4221 or 911
Burke County Sheriff's Department	P.O. Box 250 Bowbells, ND 58721	701-377-2315 or 911
Williston Office North Dakota Hwy. Patrol	223 E. Broadway, Suite 304 Williston, ND 58801	800-472-2121
Burke County Emergency Service Coordinator	Bowbells, ND 58721	701-377-2962
CP Railway		1-800-716-9132
BNSF		1-800-832-5452
DIVIDE COUNTY, NORTH DAKOTA		
Divide Station / SME Oil Terminal		
Local Municipal Contacts	Address	Phone
St. Luke's Hospital	702 First St. SW Crosby, ND 58730	701-965-6384
County 911 Call Center	211 Nain St. NE Crosby, ND 58730	701-965-6461 or 911
Crosby Fire Department	107 Central Ave. NE Crosby, ND 58730	701-965-6461 or 911
Divide County Sheriff's Department	211 Nain St. NE Crosby, ND 58730	701-965-6461 or 911
Williston Hwy. Patrol	223 E. Broadway, Suite 304 Williston, ND 58801	701-774-4360
Divide County Emergency Management	P.O. Box 49 Crosby, ND 58730	701-965-6361
Divide County LEPC	P.O. Box 49 Crosby, ND 58730	701-965-6361
CP Railway		1-800-716-9132

	Summit Midstream Partners	Revision Number: 1
	Emergency Action Plan	Effective Date: 01/2016


4.4 Local Municipal Contacts (cont.)

DIVIDE COUNTY, NORTH DAKOTA		
Sampson Truck Unloading Terminal		
St. Luke's Hospital	702 First St. SW Crosby, ND 58730	701-965-6384
County 911 Call Center	211 Nain St. NE Crosby, ND 58730	701-965-6461 or 911
Crosby Fire Department	107 Central Ave. NE Crosby, ND 58730	701-965-6461 or 911
Divide County Sheriff's Department	211 Nain St. NE Crosby, ND 58730	701-965-6461 or 911
Police Department	107 Central Ave Crosby, ND 58730	701-965-6395
Williston Hwy. Patrol	223 E. Broadway, Suite 304 Williston, ND 58801	701-774-4360
Divide County Emergency Management	P.O. Box 49 Crosby, ND 58730	701-965-6361
Divide County LEPC	P.O. Box 49 Crosby, ND 58730	701-965-6361
CP Railway		1-800-716-9132
WILLIAMS COUNTY, NORTH DAKOTA		
Epping Station		
Local Municipal Contacts		
Tioga Medical Center	P.O. Box 159 Tioga, ND 58852	701-664-3305
Mercy Medical Center	1301 15 th Ave. W Williston, ND 58801	701-774-7400
Williams County 911 Call Center	223 E. Broadway Williston, ND 58801	701-577-1212
Ray Fire Department	101 Main St Ray, ND 5884	911
Williams County Sheriff's Department	223 E. Broadway Williston, ND 58801	701-577-7700 or 911
Williston Office North Dakota Hwy. Patrol	223 E. Broadway, Suite 304 Williston, ND 58801	800-472-2121
Williams County Emergency Management	4319 16 th Ave. W Williston, ND 58801	701-577-7707
Williams County LEPC	4319 16 th Ave. W Williston, ND 58801	701-577-7707
BNSF		1-800-832-5452



4.4 Local Municipal Contacts (cont.)

WILLIAMS COUNTY, NORTH DAKOTA		
Little Muddy		
Local Municipal Contacts		
Tioga Medical Center	P.O. Box 159 Tioga, ND 58852	701-664-3305
Mercy Medical Center	1301 15 th Ave. W Williston, ND 58801	701-774-7400
Williams County 911 Call Center	223 E. Broadway Williston, ND 58801	701-577-1212
Ray Fire Department	101 Main St Ray, ND 5884	911
Williams County Sheriff's Department	223 E. Broadway Williston, ND 58801	701-577-7700 or 911
Williston Office North Dakota Hwy. Patrol	223 E. Broadway, Suite 304 Williston, ND 58801	800-472-2121
Williams County Emergency Management	4319 16 th Ave. W Williston, ND 58801	701-577-7707
Williams County LEPC	4319 16 th Ave. W Williston, ND 58801	701-577-7707
BNSF		1-800-832-5452
Wheelock		
Local Municipal Contacts		
Tioga Medical Center	P.O. Box 159 Tioga, ND 58852	701-664-3305
Mercy Medical Center	1301 15 th Ave. W Williston, ND 58801	701-774-7400
Williams County 911 Call Center	223 E. Broadway Williston, ND 58801	701-577-1212
Ray Fire Department	101 Main St Ray, ND 5884	911
Williams County Sheriff's Department	223 E. Broadway Williston, ND 58801	701-577-7700 or 911
Williston Office North Dakota Hwy. Patrol	223 E. Broadway, Suite 304 Williston, ND 58801	800-472-2121
Williams County Emergency Management	4319 16 th Ave. W Williston, ND 58801	701-577-7707
Williams County LEPC	4319 16 th Ave. W Williston, ND 58801	701-577-7707
BNSF		1-800-832-5452

	Summit Midstream Partners	Revision Number: 1
	Emergency Action Plan	Effective Date: 01/2016

4.5 Facility Process Overview

FACILITY PROCESS OVERVIEW	
NORTH DAKOTA	
Stampede Tank Farm	1 – 50,000 BBL/d Oil Meter Skid 1 – 10" Receiver, 1440# 1 – 12' x 20', 400 BBL Relief Tank 1 – 4'-1" x 11-7 1/2" Fiberglass Relief Tank, Double Wall 1 – Sump Pump 10, HP, 60 GPM, 3500 RPM
Epping Tank Farm	1 – 65' Dia x 40' H 20,000 BBL Oil Storage Tank 1 – Pump House containing (Colt Hub) <ul style="list-style-type: none"> – 3-Chg Pumps-3/4" x 10 20,000 BBLD/20HP/1800 RPM – 3- Pipeline Pumps 3/4" x 10 /20,000 BBLD/100HP/36000 RPM 1 – Truck Unloading Skid 1 – Pump House containing (little Muddy) <ul style="list-style-type: none"> – 3-Chg Pumps-3/4" x 10 /20,000 BBLD/20HP/1800 RPM – 3- Pipeline Pumps 286 TDH@20,000 BBLD/300HP/36000 RPM 1 – 10" Launcher, 1440# 1 – 8" 150# Coreolis Inlet Meter 1 – 4" 150# Coreolis Dis Meter (Colt Hub) 1 – 4" 300# Coreolis Dis Meter (Colt Hub)
Little Muddy	1 – 10" Receiver, 1440# 1 – Oil Meter Skid 1 – 12' x 20', 400 BBL Relief Tank
Divide Station	1 – 65' Dia x 40' H 20,000 BBL Oil Storage Tank 1 – 105.5' dia x 40' H 55,000 BBL Storage Tank 1 – Charge Pump Skid (Divide) <ul style="list-style-type: none"> – 3-Chg Pumps-3/4" x 10 /20,000 BBLD/20HP/1800 RPM 1 – Pipeline Pump Skid <ul style="list-style-type: none"> – 2 Pipeline Pumps 4" x 4", 1390 PSI/11,111 BPD/400 HP/3600 RPM 1 – Pipeline Pump Skid <ul style="list-style-type: none"> – 2 Pipeline Pumps 4" x 4", 1390 PSI/11,111 BPD/400 HP/3600 RPM 1 – Pipeline Pump Skid <ul style="list-style-type: none"> – 2 Pipeline Pumps 4" x 4", 1390 PSI/11,111 BPD/400 HP/3600 RPM 1 – 4" 150# Coreolis Inlet Meter 1 – 4" 900# Coreolis Dis Meter (Colt Hub) 1 – 4" 900# Coreolis Dis Meter (Stampede) 1 – 6" Receiver, 720# (Divide)

	Summit Midstream Partners	Revision Number: 1
	Emergency Action Plan	Effective Date: 01/2016

	1 – 6" Receiver, 720# (Divide Loop)
FACILITY PROCESS OVERVIEW (cont.)	
NORTH DAKOTA	
Divide Station	1 – 8" Launcher, 1440# (Colt Hub) 1 – 10" Launcher, 1440# (Stampede) 5 – Truck Unloading Skid 1 – 4'-1" x 11-7 1/2" Fiberglass Relief Tank, Double Wall 1 – Sump Pump 10, HP, 60 GPM, 3500 RPM
Wheelock	1 – 12" Gas Receiver, 720# 3 – 12" Gas Receivers, 320# 4 – 8" Oil Receivers, 720# 1 – Oil Meter Skid 1 – Duel Gas Meter Skid – 1-12" 300# Daniels Senior Gas Meter – 1-12" 150# Daniels Senior Gas Meter 1 – 12' x 20', 400 BBL Relief Tank
Samson Truck Farm	8 – 12' x 20', 400 BBL Oil Tanks 1 – 6" Oil Launcher, 720# 1 – 4" Oil Receiver, 720# 2 – Truck Unloading Skids 2 – Chg Pumps-1.5" x 3"-13"100 TDH/6000 BPD /10HP/1800 RPM 2 – Pipeline Pumps 3" x 3" 500 PSI/4100 BBLD/50HP/1750 RPM

4.6 Alarms

ALARMS		
Facility / Station	Alarm Type (see legend below)	Method / Sound
Burke County, ND		
Stampede	A	Strobe
Divide County, ND		
Divide Station / SME Oil Terminal	A	Strobe
Sampson Truck Unloading Terminal	A	Strobe
Williams County, ND		
Epping Station	A	Strobe
Little Muddy	A	Strobe
Wheelock	A	Strobe




Summit Midstream Partners

Revision Number:
1

Emergency Action Plan

Effective Date:
01/2016

A. Hazmat Material Release or Spill	D. Severe Weather
B. Fire	E. All Clear
C. Medical Emergencies	

	Summit Midstream Partners	Revision Number: 1
	Emergency Action Plan	Effective Date: 01/2016

4.7 Valves

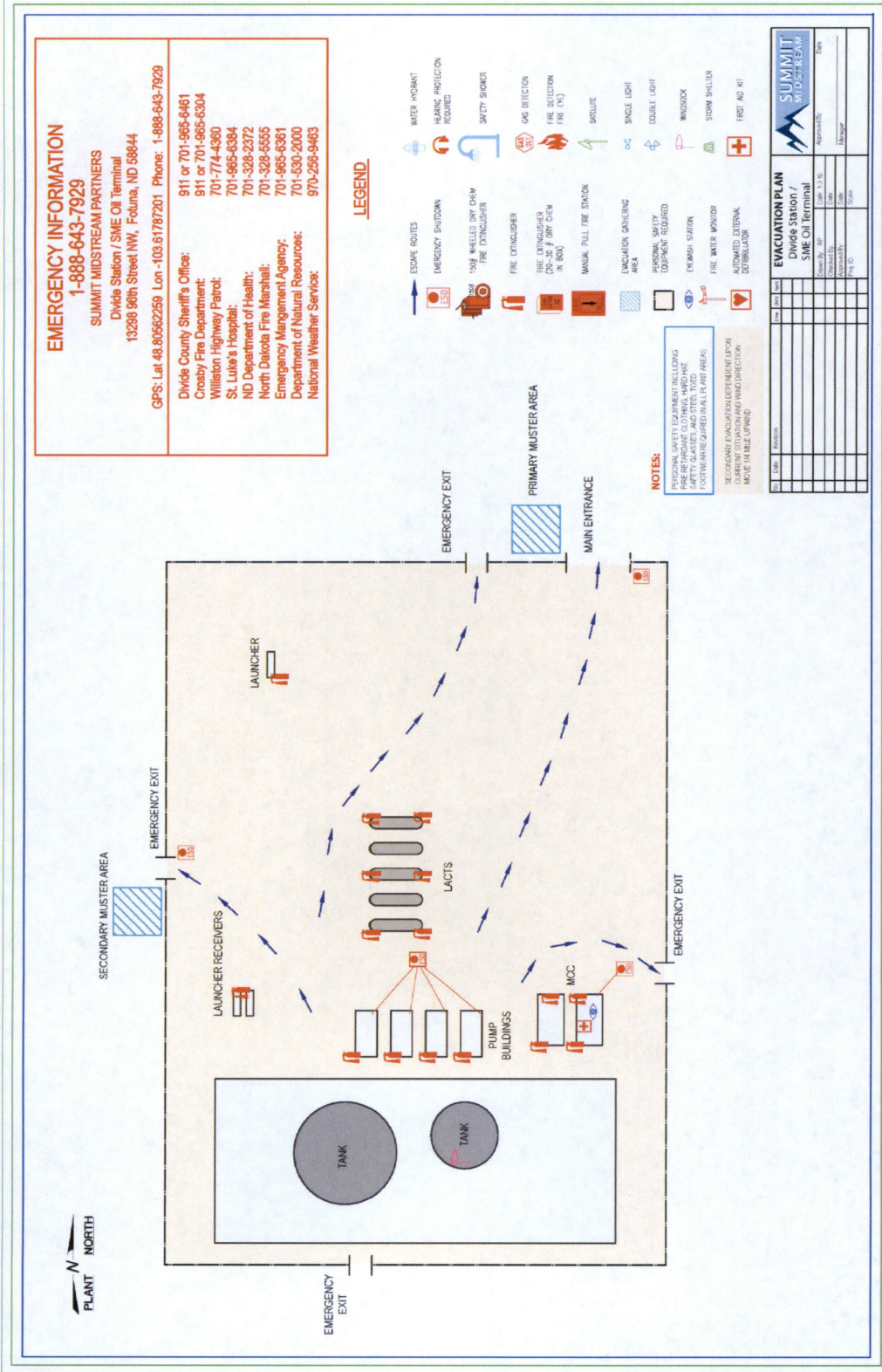
DIVIDE COUNTY, NORTH DAKOTA	
Divide Station / SME Oil Terminal	
Valve Type:	Inlet Block Valve
Valve Address:	13298 96th St. NW, Fortuna, ND 58844
GPS:	Lat: 48.8056929301 Lon: -103.617945899
Valve Type:	Inlet Block Valve
Valve Address:	13298 96th St. NW, Fortuna, ND 58844
GPS:	Lat: 48.8071460766 Lon: -103.617933743
Valve Type:	Outlet Block Valve
Valve Address:	13298 96th St. NW, Fortuna, ND 58844
GPS:	Lat: 48.8055141101 Lon: -103.617943862
Valve Type:	Outlet Block Valve
Valve Address:	13298 96th St. NW, Fortuna, ND 58844
GPS:	Lat: 48.807140219 Lon: -103.617848329
Sampson Truck Unloading Terminal	
Valve Type:	Inlet Block Valve
Valve Address:	10330 ND Hwy 42 NW, Ambrose, ND 58833
GPS:	Lat: 48.9129650341 Lon: -103.48575179
Valve Type:	Outlet Block Valve
Valve Address:	10330 ND Hwy 42 NW, Ambrose, ND 58833
GPS:	Lat: 48.9130053478 Lon: -103.485751221
WILLIAMS COUNTY, NORTH DAKOTA	
Epping Station	
Valve Type:	Inlet Block Valve
Valve Address:	5919 123rd Dr. NW, Epping, ND 58843
GPS:	Lat: 48.2724494157 Lon: -103.359284792
Valve Type:	Inlet Block Valve
Valve Address:	5919 123rd Dr. NW, Epping, ND 58843
GPS:	Lat: 48.2724463753 Lon: -103.355477537
Valve Type:	Outlet Block Valve
Valve Address:	5919 123rd Dr. NW, Epping, ND 58843
GPS:	Lat: 48.2724919942 Lon: -103.359296042
Valve Type:	Outlet Block Valve
Valve Address:	5919 123rd Dr. NW, Epping, ND 58843
GPS:	Lat: 48.2724630137 Lon: -103.355476363

	Summit Midstream Partners	Revision Number: 1
	Emergency Action Plan	Effective Date: 01/2016

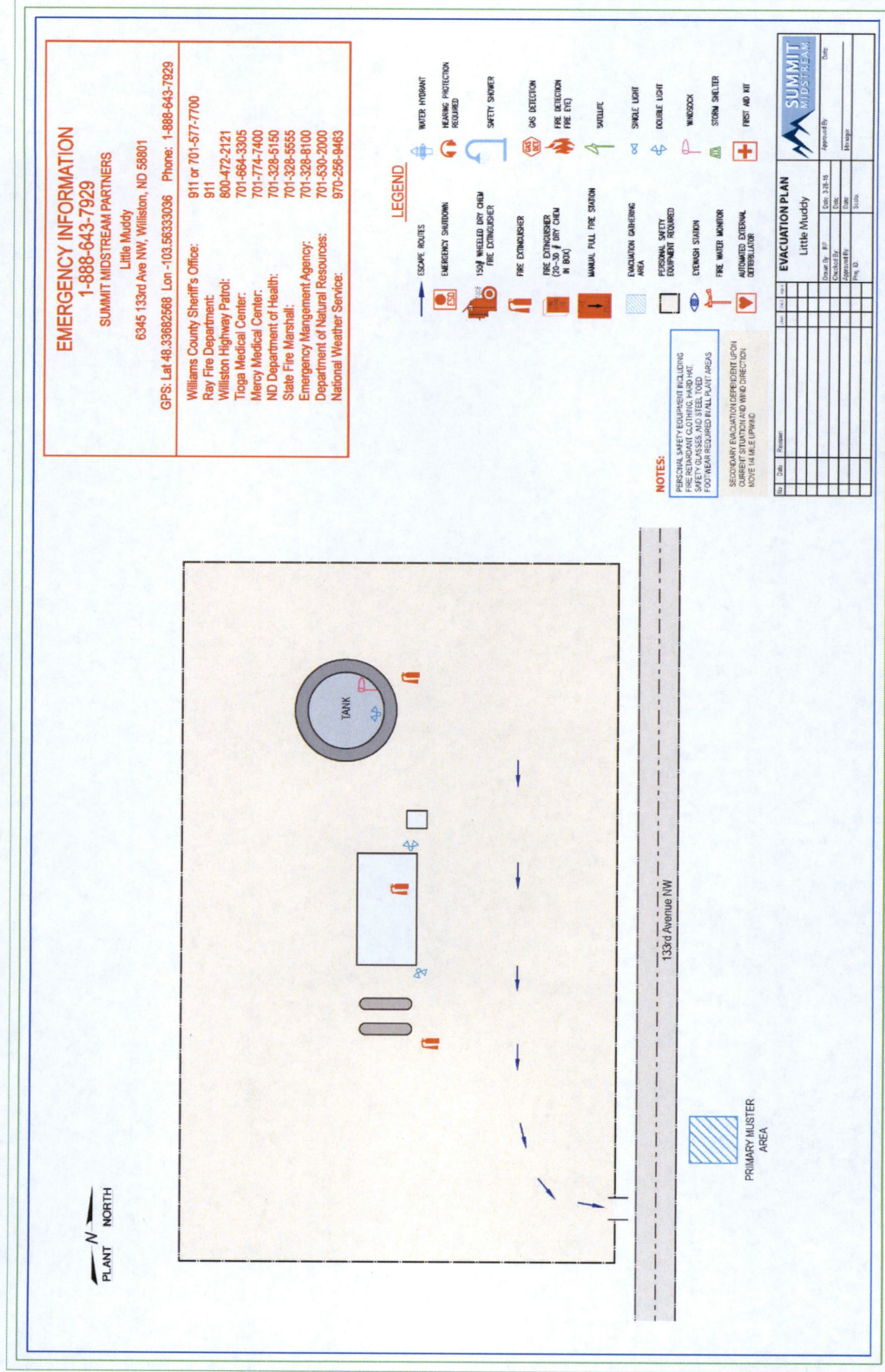
4.8 Potential Products and Data Sheets

POTENTIAL PRODUCTS AND DATA SHEETS			
Product Name	ERG Number	UN Number	Location
Crude Oil	115	1075	All locations listed on page iii of this plan.
Methanol	131	1230	All locations listed on page iii of this plan.
Natural Gas	115	1971/1972	All locations listed on page iii of this plan.
Produced Water	N/A	N/A	All locations listed on page iii of this plan.
Y Grade	115	1954	All locations listed on page iii of this plan.

Divide County, North Dakota – Divide Station / SME Oil Terminal



Williams County, North Dakota – Little Muddy




EMERGENCY INFORMATION
1-888-643-7929
SUMMIT MIDSTREAM PARTNERS
 Little Muddy
 6345 133rd Ave NW, Williston, ND 58801
 GPS: Lat. 48.33882568 Lon. -103.56333036 Phone: 1-888-643-7929

Williams County Sheriff's Office: 911 or 701-577-7700
 Ray Fire Department: 911
 Williston Highway Patrol: 800-472-2121
 Triega Medical Center: 701-664-3305
 Mercy Medical Center: 701-774-7400
 ND Department of Health: 701-328-5160
 State Fire Marshal: 701-328-5555
 Emergency Management Agency: 701-328-8100
 Department of Natural Resources: 701-530-2000
 National Weather Service: 970-256-0463

- LEGEND**
- ESCAPE ROUTES
 - EMERGENCY SHUTDOWN
 - 150# WHEELED DRY CHEM FIRE EXTINGUISHER
 - FIRE EXTINGUISHER
 - FIRE EXTINGUISHER (20-30 # DRY CHEM IN BOD)
 - MANUAL PULL FIRE STATION
 - EVACUATION GATHERING AREA
 - PERSONAL SAFETY EQUIPMENT REQUIRED
 - STENCH STATION
 - FIRE WATCH MONITOR
 - AUTOMATED EXTERNAL DETECTOR/LAR
 - WATER HYDRANT
 - HEARING PROTECTION REQUIRED
 - SAFETY SHOWER
 - GAS DETECTION
 - FIRE DETECTION (FIRE EYE)
 - SIGNALIFE
 - SINGLE LIGHT
 - DOUBLE LIGHT
 - WINDSOCK
 - STORM SHELTER
 - FIRST AID KIT
- NOTES:**
- PERSONAL SAFETY EQUIPMENT INCLUDING HEARING PROTECTION, SAFETY GLASSES AND STEEL TOED FOOT WEAR REQUIRED IN ALL PLANT AREAS
- PERSONAL SAFETY EQUIPMENT REQUIRED UPON CURRENT STATUS AND WIND DIRECTION. MOVE 1/4 MILE UPRIVER

EVACUATION PLAN
 Little Muddy

Rev	Date	Description	Drawn By	Rev	Check By	Approved By	Date

	Summit Midstream Partners	Revision Number: 1
	Emergency Action Plan	Effective Date: 01/2016

5.0 FEDERAL AND STATE AGENCIES CONTACT INFORMATION

5.1 Federal Agencies

FEDERAL	
Name	Phone
Environmental Protection Agency National Response Ctr.	800-424-8802 202-267-1322 (fax)
Environmental Protection Agency Region 8– 24 Hour Emergency Response (CO,MT,ND,SD,UT,WY)	800-424-8802 303-312-6312
Pipeline Hazardous Materials Safety Administration (PHMSA)	202-366-4595 (Washington, DC) 713-272-2859 (P/L Safety SW Region) 847-294-8580 (Hazardous Material Safety Central Region)
National Weather Service	970-256-9463
Federal Aviation Administration – Great Lakes Region	847-294-8400 (Regional) 847-294-7819

5.2 State Agencies

NORTH DAKOTA	
Name	Phone
State Department of Environmental Quality	701-328-5151
Department of Natural Resources	701-530-2000
Emergency Management Agency (MEMA)	701-328-8100
State Fire Marshall	701-328-5555

 SUMMIT MIDSTREAM	Summit Midstream Partners	Revision Number: 1
	Emergency Action Plan	Effective Date: 01/2016

 SUMMIT MIDSTREAM	Summit Midstream Partners	Revision Number: 1
	Emergency Action Plan	Effective Date: 01/2016

APPENDIX A – FORMS

The following Summit Midstream Forms are attached:

- ERF-000 General Message
- ERF-001 ICS Organization Chart
- ERF-002 Site Safety and Action Plan
- ERF-004 Incident Log
- ERF-005 Personnel Roster
- ERF-006 Staging Form
- ERF-007 Emergency Scene Map Sketch



**EMERGENCY RESPONSE
GENERAL MESSAGE**

Form Number:
ERF-000

Revision Date:
07/28/2014

EMERGENCY RESPONSE - GENERAL MESSAGE			
To:		Position:	
From:		Position:	
Subject:		Date:	Time:
Message:			
Name / Signature:		Position:	
Reply:			
Date:	Time:	Signature / Position:	
NOTE: Upon Completion - Attach to "Emergency Response Critique Form"			
NIMS ICS-213 Compatible			

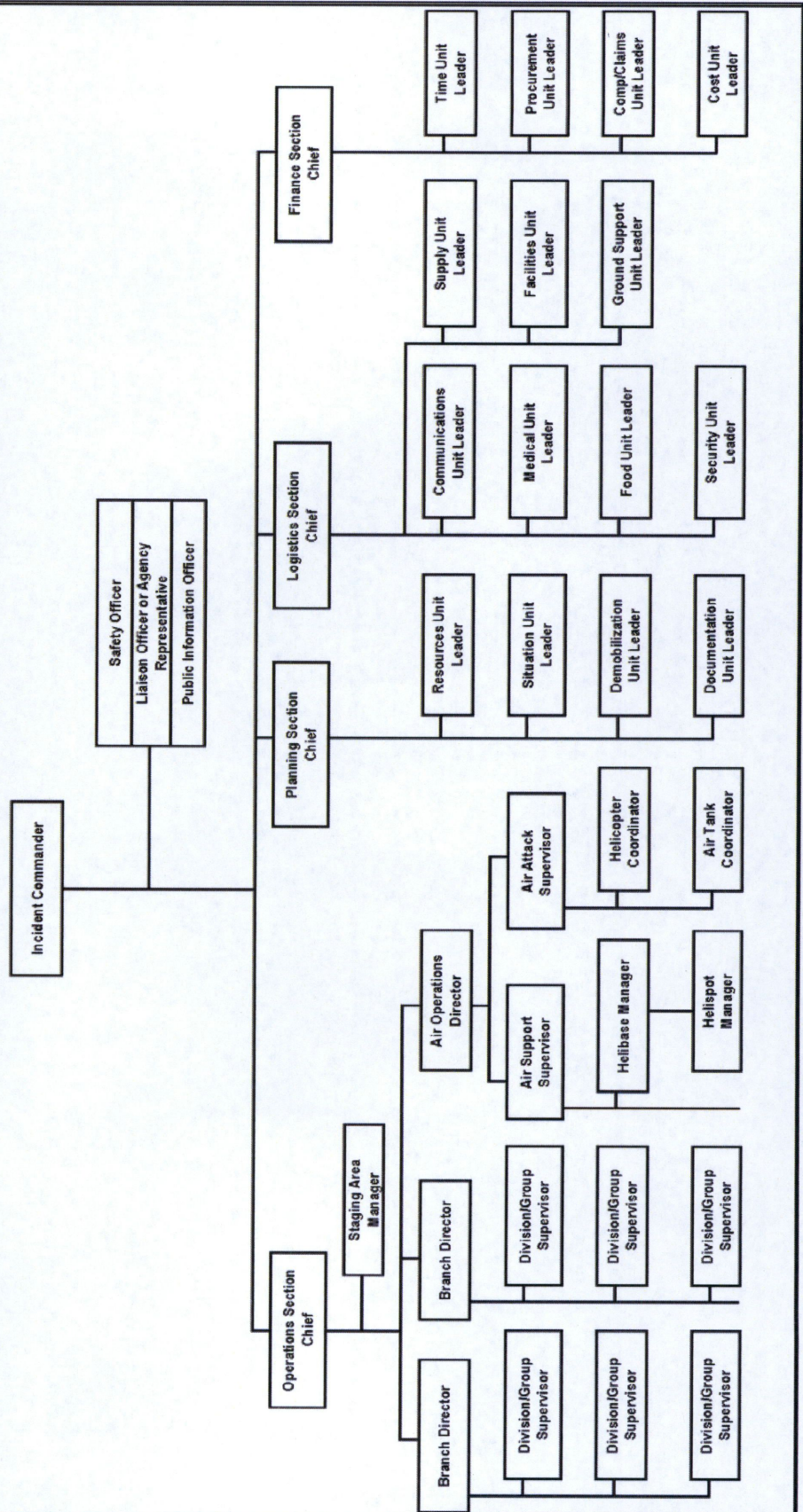


EMERGENCY RESPONSE ICS 207 ORGANIZATION CHART

Form Number: ERF-001
Revision Date: 07/28/2014

EMERGENCY RESPONSE - ICS 207 ORGANIZATION CHART

Location or Name: _____ Operational Period: From _____ to _____



File Name: erf-001 ics organization chart - 07/28/14 - Rev 0
Form No: ERF-001
Distribution: Local File

Page 1 of 1
File Retention Years: 5 Years



**EMERGENCY RESPONSE
SITE SAFETY AND ACTION PLAN**

Form Number:
ERF-002
Revision Date:
07/28/2014

EMERGENCY RESPONSE SITE SAFETY AND ACTION PLAN			
1. Description Section			
Location :			
Date:		Time:	
Type of Incident			
<input type="checkbox"/> Medical	<input type="checkbox"/> Hazmat Liquid Spill	<input type="checkbox"/> Fire	<input type="checkbox"/> Weather
<input type="checkbox"/> Rescue	<input type="checkbox"/> Hazmat Gas Release	<input type="checkbox"/> Security	Other:
Description of Incident			
Hazardous Materials Involved			
2. Accountability Section			
Accountability Established for Responders?		YES <input type="checkbox"/>	NO <input type="checkbox"/>
Area Evacuated?		YES <input type="checkbox"/>	NO <input type="checkbox"/>
Are All Evacuees Accounted For?		YES <input type="checkbox"/>	NO <input type="checkbox"/> If no, describe
3. Command Section			
Location of Command Post:			
Incident Commander:			
Safety Officer:			
EOC Activated:		YES <input type="checkbox"/>	NO <input type="checkbox"/> If yes, location:
4. Agencies Section			
Agencies Involved (Include name of representative)			
5. Communications Section			
Methods used:	Radio Channel:	Phone Number:	Other:
6. Access Zones Section			
Is Site Secure?		YES <input type="checkbox"/>	NO <input type="checkbox"/>
Exclusion (Hot) Zone Description:			
Exclusion (Hot) Zone PPE:		Level 1 <input type="checkbox"/>	Level 2 <input type="checkbox"/> Level 3 <input type="checkbox"/> Other:
Contamination Reduction (Warm) Zone Description:			
Contamination Reduction (Warm) Zone PPE:		Level 1 <input type="checkbox"/>	Level 2 <input type="checkbox"/> Level 3 <input type="checkbox"/> Other:
Method of Decontamination Used:			
Support (Cold) Zone Description:			
Support (Cold) Zone PPE:		Level 1 <input type="checkbox"/>	Other:
Area Monitoring Provided:		YES <input type="checkbox"/>	NO <input type="checkbox"/> Area Monitoring Described:

File Name: erf-002 site safety and action plan – 07/28/14 - Rev 0
Form No: ERF-002
Distribution: Local File

Page 1 of 2
File Retention Years: 5 Years
RRS Code: xxxxx



EMERGENCY RESPONSE
SITE SAFETY AND ACTION PLAN

Form Number:
ERF-002
Revision Date:
07/28/2014

7. Emergency Procedures Section	
Review of Alarm and Emergency Evacuation by Responders: YES <input type="checkbox"/> NO <input type="checkbox"/> Method of Recall Used:	
Nearest Hospital/Clinic:	Phone:
Nearest Fire Department:	Phone:
Nearest Police Department:	Phone:
8. Actions Section	
Defensive Actions Taken:	
Offensive Actions Taken:	
9. Objectives Section	
Objectives Description:	
List Potential Exposures:	
10. Assets Section	
Is Mutual Aid Involved? YES <input type="checkbox"/> NO <input type="checkbox"/>	
List Fixed Equipment:	
List Mobile Equipment:	
11. Rehab Section	
Location of Rehab:	
Method of Rehab:	
12. Safety Message for Specified Operational Period:	
Incident Commander/Preparer (Name/Signature):	
Safety Officer (Name/Signature):	
NIMS ICS-201 / 202 / 205 / 206 / 208 / 215 / 215A Compatible	



EMERGENCY SCENE MAP / SKETCH

Form Number: ERF-007
Revision Date: 07/28/2014

EMERGENCY SCENE MAP / SKETCH

Location or Name:

Operational Period: From

To

Wind Direction:

Wind Speed:


Temp:

Conditions:



Blank rounded rectangular box for notes or additional information.

Large grid area for drawing the emergency scene map or sketch.

 SUMMIT MIDSTREAM	Summit Midstream Partners	Revision Number: 1
	Emergency Action Plan	Effective Date: 01/2016

APPENDIX B – PRODUCT DATA SHEETS

The following Summit Midstream Product Data Sheets are attached:

- Crude Oil
- Methanol
- Natural Gas
- Produced Water
- Y-GRADE (Demethanized Mix



SUMMIT MIDSTREAM PARTNERS
 IN CASE OF AN EMERGENCY CALL
1-888-643-7929

DOT ID: 1267
 GUIDE: 128

PRODUCT INFORMATION SHEET – CRUDE OIL

CRUDE OIL – SYNONYMS/TRADE NAMES: Aliphatic petroleum hydrocarbons, BASE oil, Crude oils, Crude petroleum, Petroleum, Petroleum crude, Petroleum distillate, Rock oil, Seneca oil, Virol
 Amber to Black Viscous Liquid

First Response

- Isolate spill or leak area for at least 50 meters (150 feet) in all directions
- Wear SCBA
- Stay upwind
- Keep unauthorized people away
- Keep out of low areas
- Ventilate closed spaces before entering
- **HIGHLY FLAMMABLE.** Low flash point. Use of water spray when fighting fire may be ineffective.

Health

- Inhalation or contact with material may irritate or burn skin and eyes
- Fire may produce irritating, corrosive and/or toxic gases
- Vapors may cause dizziness or suffocation
- Runoff from fire control or dilution water may cause pollution

Exposure Limits

- NIOSH REL: TWA 350 mg/m³
 C 1800 mg/m³ [15-minute]
- OSHA PEL†: TWA 500 ppm (2000 mg/m³)
- IDLH: 1100 ppm [10%LEL]

Symptoms Of Exposure

- Irritation to the eyes, nose, throat
- Dizziness, Drowsiness, Headache, Nausea
- Dry Cracked Skin
- Chemical pneumonia (aspiration liquid)

Exposure Routes

- Inhalation
- Skin Absorption
- Ingestion
- Skin Contact (liquid)
- Eye Contact (liquid)

First Aid

- Eye: Irrigate immediately
- Skin: Flush with soap immediately
- Breathing: Respiratory support
- Swallow: Medical attention immediately

Personal Protection & Sanitation

- Skin: Prevent Skin Contact
- Eyes: Prevent Eye Contact
- Wash Skin: When contaminated
- Remove: When Wet (flammable)

Fire

- **HIGHLY FLAMMABLE**
- Will be easily ignited by heat, sparks, or flames
- Will form explosive mixture with air
- Most Vapors are heavier than air and spread along ground and collect in low or confined areas
- Vapors may travel to source of ignition and flash back
- Runoff to sewer may create fire or explosion hazard

Evacuation

Large Spill

- Consider initial downwind evacuation for at least 300 meters (1000 feet)

Fire

- If tank, rail car, or tank truck is involved in a fire, ISOLATE for 800 meters (½ mile) in all directions; also consider initial evacuation for 800 meters (½ mile) in all directions

(!!) Product sheet is not inclusive. For first response only. Please refer to Product MSDS, your NIOSH pocket guide, and DOT Emergency Response Guide Book.



SUMMIT MIDSTREAM PARTNERS
 IN CASE OF AN EMERGENCY CALL
1-888-643-7929

DOT ID: 1230
 GUIDE: 131

PRODUCT INFORMATION SHEET – METHANOL

METHANOL – SYNONYMS/TRADE NAMES: Methyl Alcohol, Carbinol, Columbian Spirits, Pyroligneous Sprint, Wood Alcohol, Wood Naphtha, Wood Sprit Colorless liquid with a characteristic pungent odor. Flammable Liquid – Toxic.

First Response

- Isolate spill or leak area for at least 50 meters (150 feet) in all directions
- Stay upwind
- Keep people away
- Keep out of low areas
- Wear goggles, self-contained breathing apparatus, and rubber over clothing - including gloves
- Ventilate closed spaces before entering

Health

TOXIC - MAY BE FATAL IF INHALED, INGESTED OR ABSORBED THROUGH THE SKIN

- Inhalation or contact will irritate or burn skin & eyes
- Fire will produce irritating, corrosive and/or toxic gases
- Vapors may cause dizziness or suffocation
- Runoff from fire control or dilution water may cause problem

Exposure Limits

- NIOSH REL: TWA 200 ppm (260 mg/m³)
 ST 250 ppm (325 mg/m³) [skin]
- OSHA PEL†: TWA 200 ppm (260 mg/m³)
- IDLH 6000 ppm (1 ppm = 1.31 mg/m³)

Symptoms Of Exposure

- Irritation of the eyes, skin, upper respiratory system
- Headache
- Drowsiness & Dizziness
- Nausea & Vomiting
- Visual Disturbance, optic nerve damage (blindness)
- Dermatitis

Exposure Routes

- Inhalation
- Ingestion (solution)
- Skin & Eye Contact

First Aid

CALL FOR MEDICAL AID

- Eye: Irrigate immediately (solution/liquid)
- Skin: Water flush immediately (solution/liquid)
- Breathing: Move to fresh air immediately
- Not Breathing: Give respiratory support. DO NOT give mouth to mouth if victim ingested or inhaled substance; give artificial respiration with aid of pocket mask equipped with a one-way valve or other proper respiratory medical device.
- Swallow: Medical attention immediately (solution)

Personal Protection & Sanitation

- Skin: Prevent Skin Contact
- Eyes: Prevent Eye Contact
- Wash skin: When Contaminated (solution)
- Remove: When Wet or Contaminated (solution)
- Provide: Eyewash, Quick Drench

Spill or Leak

- Fully encapsulating, vapor protective clothing should be worn for spills with no fire
- Eliminate all ignition sources
- Ground all equipment used when handling product
- Do not touch or walk through spilled material
- Stop leak if you can do it without risk
- Prevent entry into waterways, sewers, basements or confined areas
- Vapor suppressing foam may be used to reduce vapors

Fire

- **HIGHLY FLAMMABLE** – easily ignited by heat, sparks or flames
- Vapors may form explosive mixtures with air
- Vapors may travel to source of ignition & flash back
- Most vapors are heavier than air, will spread along ground & collect in low or confined areas (sewers, basements, tanks)
- Vapor explosion hazard indoors, outdoors or in sewers
- Runoff to sewer may create fire or explosion
- Containers may explode when heated
- Many liquids are lighter than water

Small Spill

- Absorb with earth, sand or other non-combustible material & transfer to containers for later disposal

Large Spill

- Dike far ahead of liquid spill for later disposal.
- Water spray may reduce vapor, but may not prevent ignition in closed spaces.

(!!) Product sheet is not inclusive. For first response only. Please refer to Product MSDS, your NIOSH pocket guide, and DOT Emergency Response Guide Book.



SUMMIT MIDSTREAM PARTNERS
 IN CASE OF AN EMERGENCY CALL
1-888-643-7929

DOT ID: 1971/1972
 GUIDE: 115

PRODUCT INFORMATION SHEET – NATURAL GAS

NATURAL GAS SYNONYMS/TRADE NAMES: Marsh Gas, Residue Gas, Fuel Gas
 Clear colorless liquid under pressure. Vapor at atmospheric conditions.

First Response

- Isolate spill or leak area for at least 100 meters (330 feet) in all directions
- Stay upwind
- Keep people away
- Keep out of low areas
- Many gases are heavier than air and will spread along ground and collect in low or confined areas
- Keep out of low areas
- Wear positive pressure self-contained breathing apparatus (SCBA)
- **DO NOT EXTINGUISH A LEAKING GAS FIRE UNLESS LEAK CAN BE STOPPED**

Exposure Limits

- Methane/Ethane: Simple Asphyxiant
- Nitrogen: 5000 ppm 8-Hr TWA (OSHA)
- CO2: 5000 ppm 8-Hr TWA (ACGIH)
- Propane: 1000 ppm 8-Hr TWA (OSHA)
2500 ppm 8-Hr TWA (ACGIH)
- Hydrogen: 20 ppm Ceiling (OSHA)
10 ppm 8-Hr TWA (ACGIH)

Exposure Routes

- Inhalation
- Eye Contact (liquid)
- Skin Contact (liquid)
- Ingestion

Personal Protection & Sanitation

- Skin: Frostbite
- Eyes: Frostbite
- Remove: When Wet (flammable)
- Provide: Frostbite

Evacuation

Large Spill

- Consider initial downwind evacuation for at least 800 meters (½ mile).

Fire

- If tank, rail car, or tank truck is involved in a fire, ISOLATE for 1600 meters (1 mile) in all directions; also consider initial evacuation for 1600 meters (1 mile) in all directions.

Health

- Vapors may cause dizziness or asphyxiation without warning
- Some may be irritating if inhaled at high concentrations
- Contact with gas or liquefied gas may cause burns, severe injury and/or frostbite
- Fire may produce irritating and/or toxic gases

Symptoms Of Exposure

CALL FOR MEDICAL AID. VAPOR POISONOUS IF INHALED.

- Rapid Breathing
- Headache
- Visual Disturbances
- Muscular Weakness
- Dizziness
- Confusion
- Excitation
- Asphyxia

Liquid:

- Frostbite

First Aid

- Move victim to fresh air
- Eye: Treat for frostbite
- Skin: Treat for frostbite
- Breathing: Give respiratory support

Fire

- **EXTREMELY FLAMMABLE**
- Will be easily ignited by heat, sparks, or flames
- Will form explosive mixture with air.
- Vapors from liquefied gas are initially heavier than air and spread along ground.
- Vapors may travel to source of ignition and flash back.
- Cylinders exposed to fire may vent & release flammable gas through pressure relief devices.
- Containers may explode when heated.
- Ruptured cylinders may rocket.

(!!) Product sheet is not inclusive. For first response only. Please refer to Product MSDS, your NIOSH pocket guide, and DOT Emergency Response Guide Book.



SUMMIT MIDSTREAM PARTNERS
 IN CASE OF AN EMERGENCY CALL
1-888-643-7929

DOT ID:
 GUIDE: n/a

PRODUCT INFORMATION SHEET – PRODUCED WATER

PRODUCED WATER – SYNONYMS/TRADE NAMES: Salt water, brine, formation water. Colorless to brown liquid. Odorless to rotten egg order, depending on sulfide content. THIS PRODUCT MAY CONTAIN OR RELEASE POISONOUS HYDROGEN SULFIDE GAS AS INDICATED ON FACILITY SIGNS AND PRODUCT LABELS.

First Response

- Isolate spill or leak area for at least 50 meters (150 feet) in all directions
- Stay upwind
- Keep people away
- Keep out of low areas
- Wear goggles, self-contained breathing apparatus, and rubber over clothing - including gloves
- Ventilate closed spaces before entering

Health (Toxicological Information)

- Inhalation not a significant source of exposure.
- Hydrogen Sulfide: Overexposure can cause unconsciousness and death.
- Eye Contact: May cause minor eye irritation which is reversible.
- Skin Contact: Contact is not a primary route of entry. However, prevent skin contact when possible.
- Ingestion: May cause nausea, vomiting, diarrhea, abdominal cramps and thirst.

Exposure Limits

- Hydrogen Sulfide – OSHA: 20 ppm Ceiling
- Benzene – OSHA: 1 ppm / STEL 5 ppm
- Crude oil – OSHA: 400 ppm
- Petroleum Distillates – Naphtha – (8002-05-9)
- OSHA: 500 ppm TWA; 2000mg/m3 TWA
- NIOSH: 350 mg/m3 TWA – 1800 mg/m3 Ceiling (15 min)

Symptoms Of Exposure

When identified as containing Hydrogen Sulfide

- Respiratory Irritation
- Drowsiness & Dizziness
- Nausea & Vomiting
- Dermatitis
- Irritation of the eyes, skin, upper respiratory system
- Headache
- Visual Disturbance, optic nerve damage (blindness)

Exposure Routes

- Inhalation
- Ingestion (solution)
- Skin & Eye Contact

First Aid

CALL FOR MEDICAL AID

- If in eyes: Rinse cautiously with fresh water for several minutes. Remove contacts if present and easy to do.
- If swallowed: Rinse mouth. Call a poison control center or medical assistance if you feel unwell.
- Skin: Wash skin with soap and water
- Ingestion – Do not induce vomiting. Loosen tight clothing such as belts, collars, etc.

Personal Protection & Sanitation

- Skin: Prevent Skin Contact
- Eyes: Wear protective gloves/eye protection/face protection
- Wash skin: Wash hands/face thoroughly after handling
- Remove: When Wet or Contaminated (solution)
- Provide: Eyewash, Quick Drench

When identified as containing Hydrogen Sulfide

- If inhaled: Move to fresh air immediately. Get immediate medical advice/assistance.
- If victim is breathing convulsively or not breathing, start artificial respiration – call for medical assistance.
- Wear respiratory protection as directed by facility signs/labels.

Spill or Leak

- Avoid release to the environment
 - Eliminate all ignition sources
 - Ground all equipment used when handling product
- When identified as containing Hydrogen Sulfide**
- Keep container tightly closed
 - Do not breathe gas/mist/vapors or spray
 - Use only outdoors or in a well-ventilated area
 - In case of inadequate ventilation, Wear respiratory protection
 - Stop leak if you can do it without risk
 - Prevent entry into waterways, sewers, basements or confined areas
 - Vapor suppressing foam may be used to reduce vapors

Small Spill

- Absorb with earth, sand or other non-combustible material & transfer to containers for later disposal

Large Spill

- Dike far ahead of liquid spill for later disposal.
- Water spray may reduce vapor, but may not prevent ignition in closed spaces.

Fire

- **HIGHLY FLAMMABLE** – easily ignited by heat, sparks or flames
- Vapors may form explosive mixtures with air
- Vapors may travel to source of ignition & flash back
- Most vapors are heavier than air, will spread along ground & collect in low or confined areas (sewers, basements, tanks)
- Vapor explosion hazard indoors, outdoors or in sewers
- Runoff to sewer may create fire or explosion
- Containers may explode when heated
- Many liquids are lighter than water

(!!) Product sheet is not inclusive. For first response only. Please refer to Product MSDS, your NIOSH pocket guide, and DOT Emergency Response Guide Book.



SUMMIT MIDSTREAM PARTNERS
 IN CASE OF AN EMERGENCY CALL
1-888-643-7929

DOT ID: 1954
 GUIDE: 115

PRODUCT INFORMATION SHEET – Y-GRADE (DEMETHANIZED MIX)

Y-GRADE (Demethanized Mix) SYNONYMS/TRADE NAMES: Raw Feed, Liquefied Petroleum Gas, NGL
 Colorless liquefied gas with slight to no identifiable odor.

<p>First Response</p> <ul style="list-style-type: none"> Isolate spill or leak area for at least 100 meters (330 feet) in all directions Stay upwind Keep people away Keep out of low areas Many gases are heavier than air and will spread along ground and collect in low or confined areas Keep out of low areas Wear positive pressure self-contained breathing apparatus (SCBA) DO NOT EXTINGUISH A LEAKING GAS FIRE UNLESS LEAK CAN BE STOPPED 	<p>Health</p> <ul style="list-style-type: none"> Vapors may cause dizziness or asphyxiation without warning Some may be irritating if inhaled at high concentrations Contact with gas or liquefied gas may cause burns, severe injury and/or frostbite Fire may produce irritating and/or toxic gases
<p>Exposure Limits</p> <ul style="list-style-type: none"> For specific exposure limits refer to MSDS for this product. 	<p>Symptoms Of Exposure</p> <p>CALL FOR MEDICAL AID. VAPOR POISONOUS IF INHALED.</p> <ul style="list-style-type: none"> Rapid Breathing Headache Visual Disturbances Muscular Weakness Dizziness Confusion Excitation Asphyxia
<p>Exposure Routes</p> <ul style="list-style-type: none"> Inhalation Eye Contact (liquid) Skin Contact (liquid) Ingestion 	<p>Liquid:</p> <ul style="list-style-type: none"> Frostbite
<p>Personal Protection & Sanitation</p> <ul style="list-style-type: none"> Skin: Frostbite Eyes: Frostbite Remove: When Wet (flammable) Provide: Frostbite 	<p>First Aid</p> <ul style="list-style-type: none"> Move victim to fresh air Eye: Treat for frostbite Skin: Treat for frostbite Breathing: Give respiratory support
<p>Evacuation</p> <p>Large Spill</p> <ul style="list-style-type: none"> Consider initial downwind evacuation for at least 800 meters (½ mile). <p>Fire</p> <ul style="list-style-type: none"> If tank, rail car, or tank truck is involved in a fire, ISOLATE for 1600 meters (1 mile) in all directions; also consider initial evacuation for 1600 meters (1 mile) in all directions. 	<p>Fire</p> <ul style="list-style-type: none"> EXTREMELY FLAMMABLE Will be easily ignited by heat, sparks, or flames Will form explosive mixture with air. Vapors from liquefied gas are initially heavier than air and spread along ground. Vapors may travel to source of ignition and flash back. Cylinders exposed to fire may vent & release flammable gas through pressure relief devices. Containers may explode when heated. Ruptured cylinders may rocket.

(!!) Product sheet is not inclusive. For first response only. Please refer to Product MSDS, your NIOSH pocket guide, and DOT Emergency Response Guide Book.