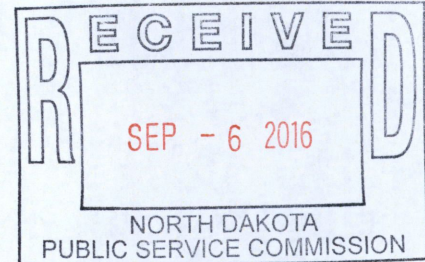


September 2, 2016

Darrell Nitschke, Executive Director
North Dakota Public Service Commission
600 East Boulevard, Dept. 408
Bismarck, ND 58505-0480



RE: Center to Mandan 230 kV Transmission Line Upgrade
Certification Pursuant to N.D. Century Code 49-22-03(3)(a)(3)

Dear Mr. Nitschke:

As you are aware, the ND Public Service Commission recently approved the proposed Oliver III Wind project in Oliver and Morton Counties. Power from this project will be delivered via a new substation (Roughrider) to be built adjacent to Minnkota's existing Center to Mandan 230 kV transmission line.

As a result of the above indicated project, Minnkota must increase the power handling capability of the portion of the Center to Mandan 230 kV line from the new Roughrider Substation to the Mandan Substation, from approximately 614 MVA to approximately 703 MVA. This uprate requires an increased line clearance in order to meet the minimum clearance requirements as specified by the National Electric Safety Code. This increase in pole height will be accomplished by the use of phase raisers on 22 structures. These phase raisers will be either 5 foot or 10 foot in length. No excavations will be required for this work. This work will be accomplished while the line is in service. The transmission line will remain a 230 kV transmission line.

The 21.67 mile long Center to Mandan transmission line was constructed prior to April 9, 1975. The upgrade project is scheduled to take place in the late fall to early winter of 2016 to avoid crop damage and soft ground conditions. The project will take place within the existing transmission line right-of-way. (See enclosed figures.)

In accordance with North Dakota Century Code 49-22-03 (3)(a)(3), please find enclosed a notarized certification indicating that the upgrading of this transmission line will not affect any known exclusion or avoidance areas as defined by N.D.A.C. 69-06-08-02(1) and (2), and that Minnkota will comply with all applicable conditions and protections in siting laws and rules and commission orders previously issued for any part of this facility.

1 **PU-16-630** Filed: 9/6/2016 Pages: 15
Certification regarding exclusion and avoidance
areas with supporting documentation

Minnkota Power Cooperative, Inc.

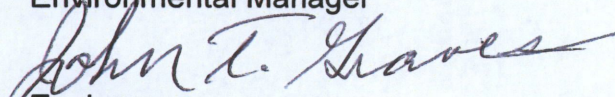
John T. Graves, P.E.

Should you have any questions concerning this project, please contact me at 701-795-4221 or at jgraves@minnkota.com.

Yours truly,

MINNKOTA POWER COOPERATIVE, INC.

John T. Graves, P.E.
Environmental Manager



Enclosures

C: Jerry Lein, ND PSC
Robert (Mac) McLennan w/o figures
John Thompson

Certification Pursuant to N.D. Century Code 49-22-03(3)(a)(3)

Center to Mandan 230 kV Transmission Line Upgrade

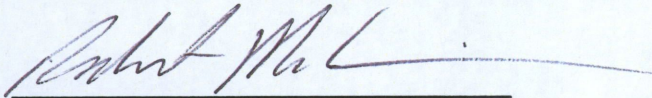
Minnkota Power Cooperative, Inc.

September 1, 2016

I, Robert McLennan, President & CEO, a duly authorized agent of Minnkota Power Cooperative, Inc. that has the authority to bind the company in these matters, do hereby certify under oath:

1. That the upgrade of the Center to Mandan 230 kV transmission line will not affect any known exclusion or avoidance areas as defined by the North Dakota Administrative Code 69-06-08-02 (1) and (2).
2. That Minnkota Power Cooperative, Inc. will comply with all applicable conditions and protections in applicable North Dakota siting laws and rules, and commission orders previously issued for any part of the facility.

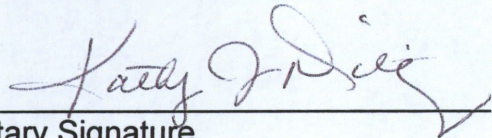
Dated this 1st day of September, 2016.



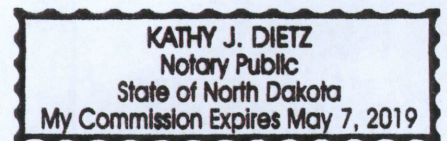
Robert McLennan
President & CEO

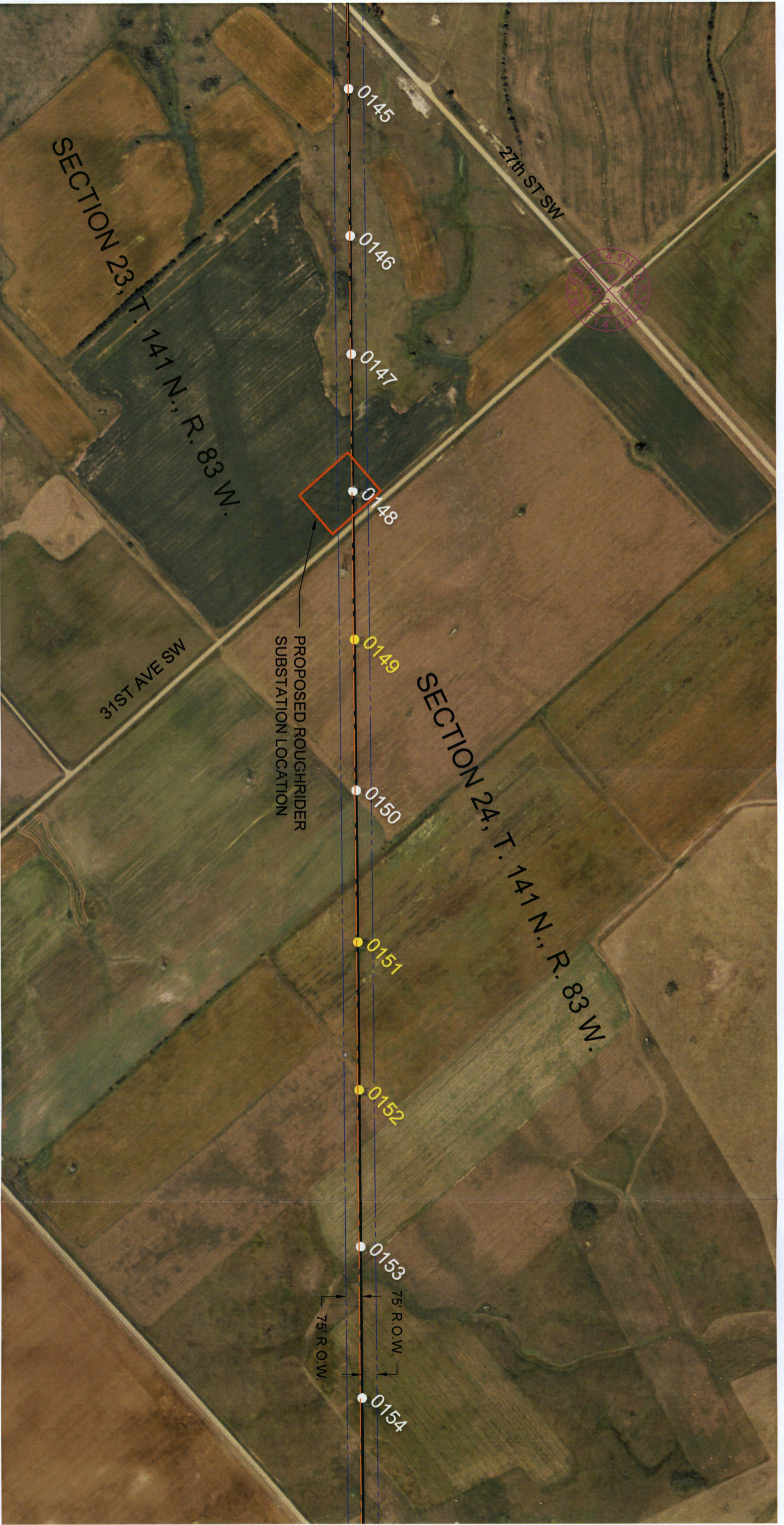
STATE OF NORTH DAKOTA)
) SS.
COUNTY OF GRAND FORKS)

This instrument was acknowledged before me on September 1, 2016, by Robert McLennan, the President & CEO of Minnkota Power Cooperative, Inc., a Minnesota cooperative corporation, on behalf of the cooperative corporation.


Notary Signature

S E A L





PROPOSED ROUGH RIDER
SUBSTATION LOCATION

75' R.O.W.
75' R.O.W.

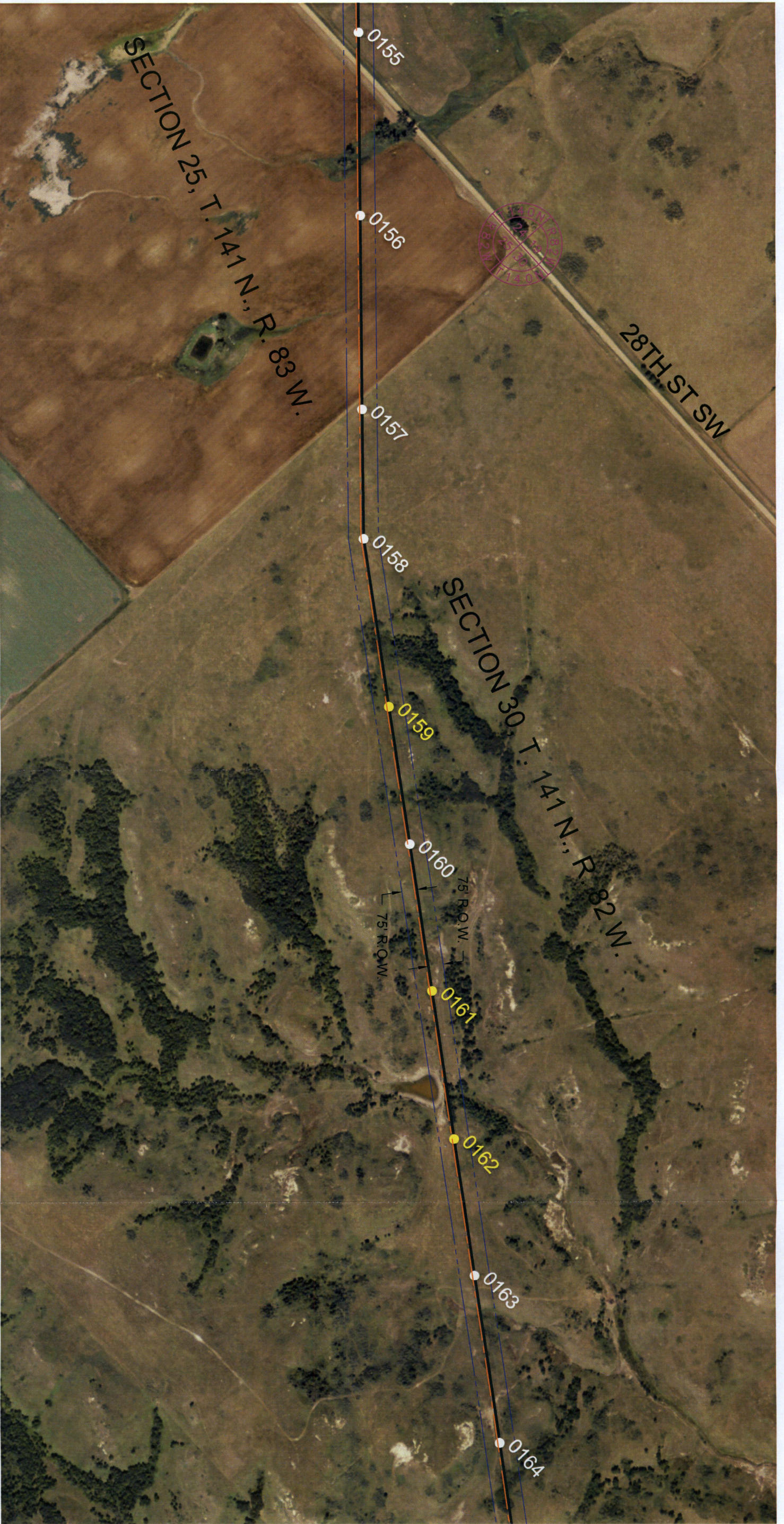
GEOGRAPHIC DATA FROM NORTH DAKOTA STATE GIS DEPARTMENT AND MINNKOTA POWER UPDATED: 03-18-13

DATE	PROJECT #	WO #	REVISIONS	BY	WO #	DRAWN B.S.H.
						DATE 09-02-16
						APPROVED J.T.
						PROJECT #



Minnkota Power
COOPERATIVE, INC.
CENTER TO MANDAN 230 - KV
STRUCTURE MODIFICATIONS
OLIVER COUNTY, NORTH DAKOTA

SCALE 1" = 500'
SHEET 2 OF 12
DWG. NO.



GEOGRAPHIC DATA FROM NORTH DAKOTA STATE GIS DEPARTMENT AND MINNKOTA POWER UPDATED: 03-18-13

DATE	PROJECT #	WO #	REVISIONS	BY	WO #	DRAWN B.S.H.
						DATE 09-02-16
						APPROVED J.T.
						PROJECT #


		CENTER TO MANDAN 230 - KV STRUCTURE MODIFICATIONS OLIVER COUNTY, NORTH DAKOTA	
SCALE 1" = 500'	DWG. NO.	SHEET 3 OF 12	



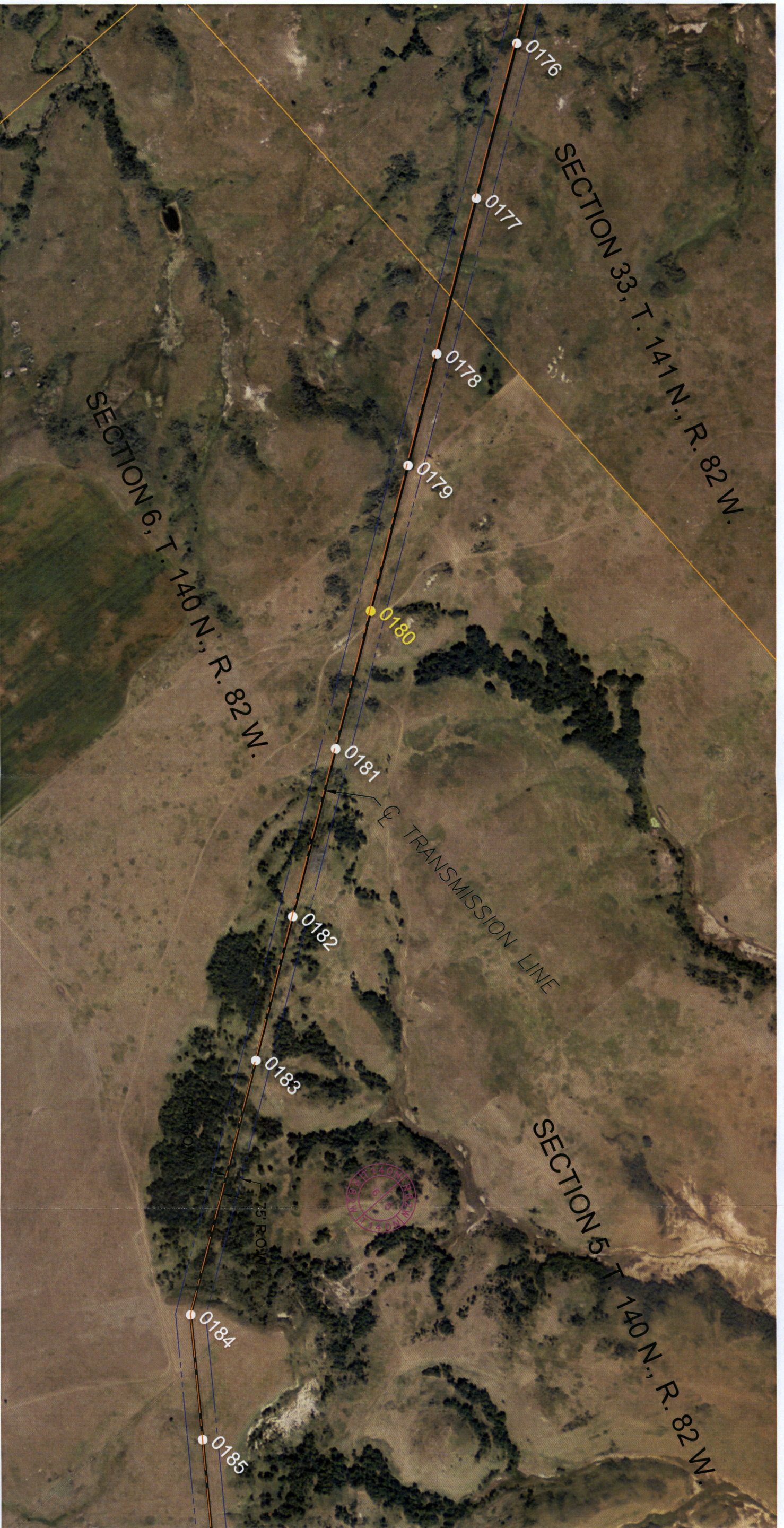
GEOGRAPHIC DATA FROM NORTH DAKOTA STATE GIS DEPARTMENT AND MINNKOTA POWER UPDATED: 03-18-13

DATE	PROJECT #	WO #	REVISIONS	BY	WO #	DRAWN B.S.H.	DATE 09-02-16
						APPROVED J.T. <td></td>	
						PROJECT # <td></td>	

CENTER TO MANDAN 230 - KV
STRUCTURE MODIFICATIONS
OLIVER COUNTY, NORTH DAKOTA


Minnkota Power
 COOPERATIVE, INC.

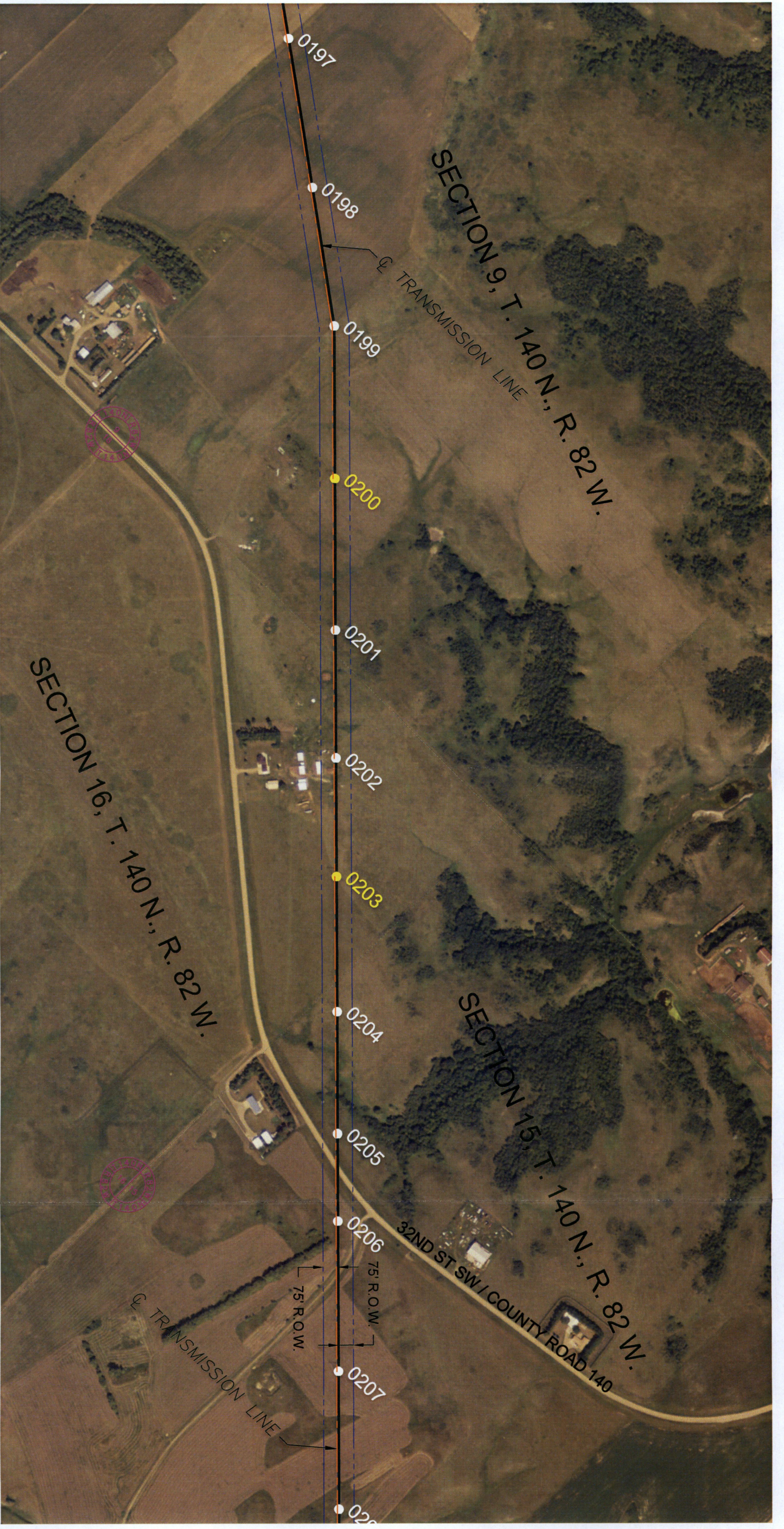
SCALE 1" = 500'
 SHEET 4 OF 12
 DWG. NO.



GEOGRAPHIC DATA FROM NORTH DAKOTA STATE GIS DEPARTMENT AND MINNKOTA POWER UPDATED: 03-18-13

DATE	PROJECT #	WO #	REVISIONS	BY	WO #

DRAWN B.S.H.	Minnkota Power COOPERATIVE, INC. <small>New Technology Energy Partner</small>	CENTER TO MANDAN 230 - KV STRUCTURE MODIFICATIONS OLIVER COUNTY, NORTH DAKOTA
DATE 08-02-16		
APPROVED J.T.		
	PROJECT #	
	SCALE 1" = 500'	SHEET 5 OF 12
	DWG. NO.	

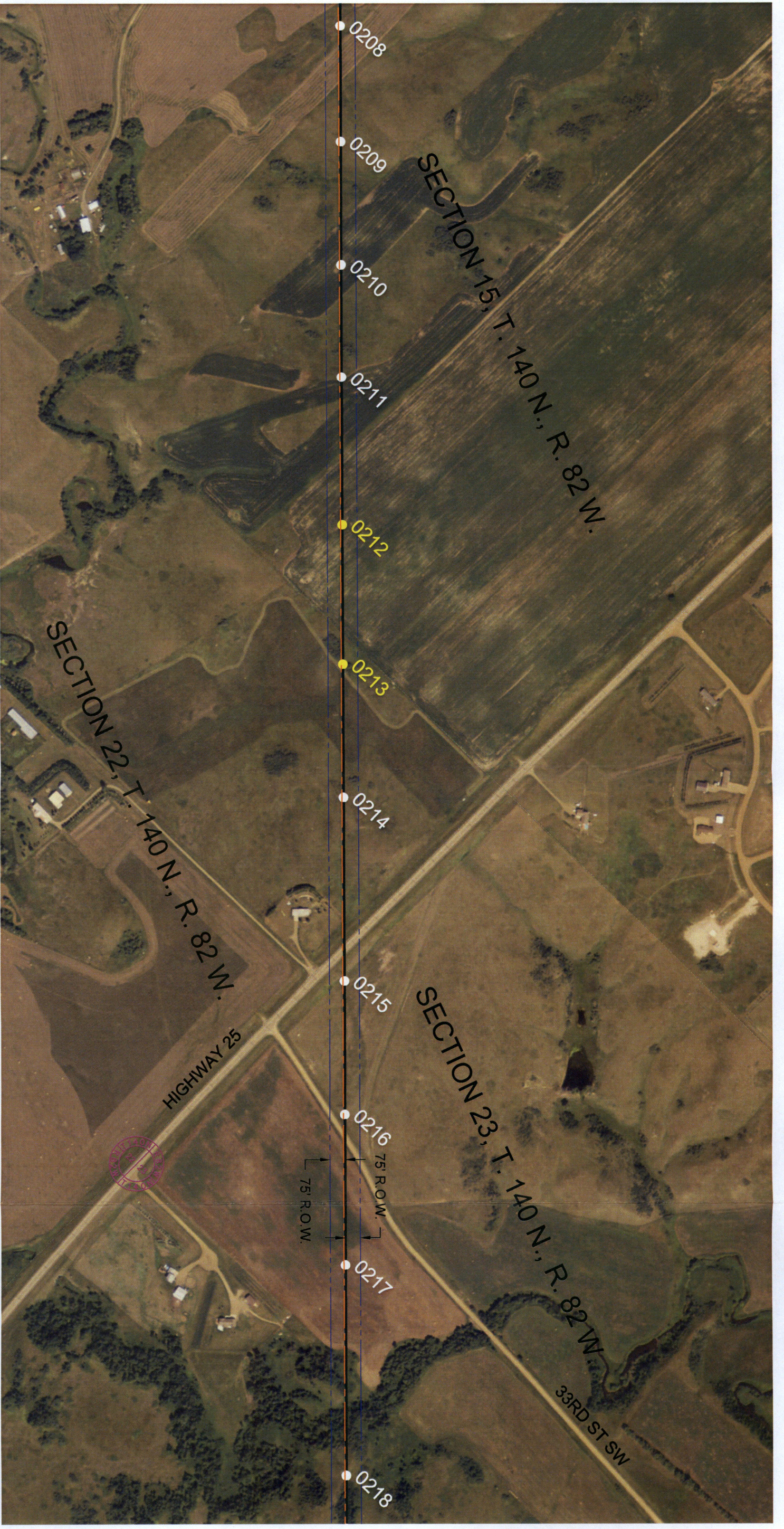


GEOGRAPHIC DATA FROM NORTH DAKOTA STATE GIS DEPARTMENT AND MINNKOTA POWER UPDATED: 03-18-13

DATE	PROJECT #	WO #	REVISIONS	BY	WO #

DRAWN B.S.H.	Minnkota Power <small>COOPERATIVE, INC.</small> 	CENTER TO MANDAN 230 - KV STRUCTURE MODIFICATIONS OLIVER COUNTY, NORTH DAKOTA
DATE 09-02-16		
APPROVED J.T.		
	PROJECT #	
	DWG. NO.	SHEET 7 OF 12





GEOGRAPHIC DATA FROM NORTH DAKOTA STATE GIS DEPARTMENT AND MINNKOTA POWER UPDATED: 03-18-13

DATE	PROJECT #	WO #	REVISIONS	BY	WO #


DRAWN B.S.H.	
DATE 09-02-16	
APPROVED J.T.	
PROJECT #	

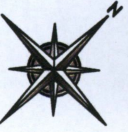
Minnkota Power <small>New Solutions. Smarter Power.</small> COOPERATIVE, INC.	
CENTER TO MANDAN 230 - KV STRUCTURE MODIFICATIONS OLIVER COUNTY, NORTH DAKOTA	SCALE 1" = 500' SHEET 8 OF 12
DWG. NO.	

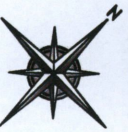


GEOGRAPHIC DATA FROM NORTH DAKOTA STATE GIS DEPARTMENT AND MINNKOTA POWER UPDATED: 03-18-13

DATE	PROJECT #	WO #	REVISIONS	BY	WO #

DRAWN B.S.H.	Center to Mandan 230 - KV STRUCTURE MODIFICATIONS OLIVER COUNTY, NORTH DAKOTA 		
DATE 09-02-16			
APPROVED J.T.			
	PROJECT #	SCALE 1" = 500'	SHEET 9 OF 12
		DWG. NO.	





GEOGRAPHIC DATA FROM NORTH DAKOTA STATE GIS DEPARTMENT AND MINNKOTA POWER UPDATED: 03-18-13

DATE	PROJECT #	WO #	REVISIONS	BY	WO #	DRAWN B.S.H.
						DATE 09-02-16
						APPROVED J.T.
						PROJECT #

		CENTER TO MANDAN 230 - KV STRUCTURE MODIFICATIONS OLIVER COUNTY, NORTH DAKOTA	
SCALE 1" = 500'	DWG.NO.	SHEET 10 OF 12	



GEOGRAPHIC DATA FROM NORTH DAKOTA STATE GIS DEPARTMENT AND MINNKOTA POWER UPDATED: 03-18-13

DATE	PROJECT #	WO #	REVISIONS	BY	WO #

DRAWN	B.S.H.
DATE	09-02-16
APPROVED	J.T.
PROJECT #	

Center to Mandan 230 - KV STRUCTURE MODIFICATIONS MORTON COUNTY, NORTH DAKOTA	
	SCALE 1" = 500' SHEET 12 OF 12
DWG. NO.	