

MONTANA-DAKOTA UTILITIES CO.
A Division of MDU Resources Group, Inc.

Before the Public Service Commission of North Dakota

Case No. PU-16-_____

Direct Testimony
of
Stephanie Bosch

1 **Q. Would you please state your name and business address?**

2 A. My name is Stephanie Bosch and my business address is 400
3 North Fourth Street, Bismarck, North Dakota 58501.

4 **Q. What is your position with Montana-Dakota Utilities Co.?**

5 A. I am a Regulatory Affairs Manager for Montana-Dakota Utilities Co.
6 (Montana-Dakota), a Division of MDU Resources Group, Inc.

7 **Q. Would you please describe your duties as Regulatory Affairs
8 Manager?**

9 A. I am responsible for the proper application of the Company's gas
10 and electric rates in the Customer Care and Billing System (CC&B), the
11 application of tariffs and the preparation of miscellaneous rate filings.

12 **Q. Would you please describe your education and professional
13 background?**

14 A. I graduated from the University of North Dakota in 1995 with a
15 Bachelor of Business and Public Administration degree in Banking and
16 Financial Economics. I joined Montana-Dakota in June 1997 as a Rate
17 Clerk in the Regulatory Affairs area and realized positions of increasing
18 responsibility within the Regulatory Affairs Department until 2011 when I

1 left the Company. In 2013 I returned to the Company as a Regulatory
2 Analyst before attaining my current position in August of 2015.

3 **Q. What is the purpose of your testimony in this proceeding?**

4 A. The purpose of my testimony is to present the proposed rate
5 schedules appended to the Application in this proceeding as well as
6 discuss changes in tariff conditions.

7 **Q. What statements and exhibits are you sponsoring in this
8 proceeding?**

9 A. I am sponsoring the proposed rate schedules provided in Appendix
10 B to the Application, with the exception of the rate schedule sponsored by
11 Mr. Jacobson.

12 I am also sponsoring the proposed interim rate schedules provided
13 in Appendix C to the Interim Application.

14 **Q. Would you briefly describe the changes made to the Company's
15 electric tariffs?**

16 A. Yes. The Company is proposing the following changes to the
17 electric tariffs as clearly identified in the legislative copy of the tariffs
18 provided in Appendix B of the Application:

- 19 • The rates described by Ms. Aberle have been incorporated into the
20 proposed tariffs.
- 21 • Remove the contract discount provision available under Outdoor
22 Lighting Service Rate 52. Customers taking service under Rate 52
23 are not subject to a contract of any length and therefore the

1 available discount is not applicable and should be removed from
2 the tariff. Currently no Rate 52 customers are receiving a discount
3 under this provision.

4 • Clarify the definition of unpaid balance included in the Late
5 Payment provision outlined in Rate 100, Section 3, Paragraph 3 on
6 Sheet No. 49.4.

7 • Increase the returned check charge to \$40.

8 • Introduce a reconnect fee rate differential for demand and non-
9 demand metered services. Currently the Company charges \$20.00
10 for the reconnection of service during normal business hours for
11 seasonal or temporary customers as outlined in Section III,
12 Paragraph 7, on Sheet No. 49.5, of the Company's Conditions of
13 Service Rate 100. The Company is proposing to continue to
14 charge this \$20.00 reconnection fee for non-demand metered
15 services and to increase the reconnection fee to \$40.00 for
16 seasonal or temporary demand metered services. The fee
17 differential and increase is to recognize the increase in time
18 necessary to reconnect a demand metered customer.

19 • Add language to the Liability provision of the Company's Electric
20 Service Rules and Regulations Rate 110, Paragraph 104.2, on
21 Sheet No. 58.7, Customer's Equipment, to state that is the
22 customer's obligation to consult with the Company regarding fault
23 current and protection devices.

1 • Modifications to Section 600 – Metering of the Company’s Electric
2 Service Rules and Regulations Rate 110 on Sheet Nos. 58.20
3 through 58.22 to state:

- 4 ○ Only Company-owned or Company-approved devices shall
5 be placed into meter sockets
- 6 ○ All meters will be placed outdoors unless approved by
7 Company. After consultation with the Company and in the
8 event the customer chooses to proceed with an indoor meter
9 installation where the location renders the automatic meter
10 reading equipment ineffective, customer will be responsible
11 for any costs associated with remedying the situation prior to
12 installation.
- 13 ○ Other miscellaneous modifications to better explain metering
14 requirements.

15 **Q. Is the Company proposing any changes to the Generation Resource**
16 **Recovery Rider Rate 56 tariff?**

17 A. Yes. As noted in the direct testimony of Ms. Aberle, Montana-
18 Dakota is proposing to set the GRRR rates to \$0.00 upon implementation
19 of final rates. The Company will maintain the tariff as an available cost
20 recovery rate going forward in the event future projects qualify under the
21 applicability provision of the tariff.

1 The Company is also proposing to modify the class allocator under
2 Rate 56 to be consistent with the allocation of demand costs in the class
3 cost of service study, Factor 2 (12 CP Allocator).

4 **Q. Is the Company proposing any changes to the Environmental Cost**
5 **Recovery Rider Rate 57 tariff?**

6 A. Yes. As noted in the direct testimony of Ms. Aberle, Montana-
7 Dakota is proposing to set the ECRR rates to \$0.00 upon implementation
8 of final rates. The Company will maintain the tariff as an available cost
9 recovery rate going forward in the event future projects qualify under the
10 applicability provision of the tariff.

11 The Company is also proposing to modify the class allocator under
12 Rate 57 to be consistent with the allocation of demand costs in the class
13 cost of service study, Factor 2 (12 CP Allocator).

14 **Q. Is the Company proposing any changes to the Transmission Cost**
15 **Adjustment Rate 59 tariff?**

16 A. Yes. The Company is proposing the following changes to Rate 59:
17 • The Company is also proposing to modify the class allocator under
18 Rate 59 to be consistent with the allocation of transmission costs in
19 the class cost of service study, Factor 2 (12 CP Allocator)
20 • Currently Small Municipal Electric Service Rate 40 customers are
21 billed the large TCA rate. The Company is proposing to bill Rate 40
22 customers the Small General TCA rate effective with final rates in
23 this case. Similar size customers not eligible for service under Rate

1 40 would qualify for service under the Company's Small General
2 Electric Service Rate 20 and therefore would be billed the Small
3 General TCA rate. For consistency, Rate 40 customers should also
4 be billed the Small General TCA rate.

5 The above noted changes, along with the transmission revenue
6 requirement as described in the direct testimony of Mr. Jacobson and
7 the proposed rates calculated by Ms. Aberle, are reflected in the
8 proposed TCA rates presented in Appendix B of this Application.

9 **Q. Does this conclude your testimony?**

10 **A. Yes.**



Montana-Dakota Utilities Co.

A Division of MDU Resources Group, Inc.

400 N 4th Street
Bismarck, ND 58501

State of North Dakota Electric Rate Schedule

NDPSC Volume 4
8th Revised Sheet No. 3
Canceling 7th Revised Sheet No. 3

RESIDENTIAL ELECTRIC SERVICE Rate 10

Page 1 of 1

Availability:

In all communities served for single-phase residential electric service for domestic purposes only.

Rate:

Basic Service Charge:	\$0.65 per day
Energy Charge:	
October – May:	
First 750 Kwh per month	6.066¢ per Kwh
Over 750 Kwh per month	3.066¢ per Kwh
June – September:	6.066¢ per Kwh
Base Fuel and Purchased Power:	2.536¢ per Kwh

Minimum Bill:

Basic Service Charge.

Payment:

Bills will be considered past due if not paid by the due date shown on the bill. Past due bills are subject to a late payment charge in accordance with the provisions of Rate 100 or any amendments or alterations thereto.

Adjustment Clauses:

Bills are subject to the following adjustments or any amendments or alterations thereto:

1. Renewable Resource Cost Adjustment Rate 55
2. Generation Resource Recovery Rider Rate 56
3. Environmental Cost Recovery Rider Rate 57
4. Fuel and Purchased Power Adjustment Rate 58
5. Transmission Cost Adjustment Rate 59

General Terms and Conditions:

The foregoing schedule is subject to Rates 100-112 and any amendments or alterations thereto or additional rules and regulations promulgated by the Company under the laws of the state.

Date Filed: October 14, 2016

Effective Date:

Issued By: Tamie A. Aberle
Director - Regulatory Affairs

Case No.:



Montana-Dakota Utilities Co.

A Division of MDU Resources Group, Inc.

400 N 4th Street
Bismarck, ND 58501

State of North Dakota Electric Rate Schedule

NDPSC Volume 4
2nd Revised Sheet No. 4
Canceling 1st Revised Sheet No. 4

OPTIONAL RESIDENTIAL ELECTRIC THERMAL ENERGY STORAGE SERVICE Rate 13

Page 1 of 2

Availability:

In all communities served for single-phase residential electric for customers operating Company approved thermal energy storage facilities for the purpose of utilizing off-peak electric energy for space conditioning purposes where electric space heating is the primary heating source. Service under this rate is not available when another energy source provided by the Company is utilized as a back-up heating source.

Rate:

Basic Service Charge: \$0.75 per day

Off-Peak Energy Charge:

For all energy used during the designated hours of 10:00 p.m. to 8:00 a.m. local time.

October – May: 1.100¢ per Kwh

On-Peak Energy Charge:

For all energy not covered by the Off-Peak rating period.

October – May:

First 750 Kwh per month 7.845¢ per Kwh

Over 750 Kwh per month 4.845¢ per Kwh

June – September: 7.845¢ per Kwh

Base Fuel and Purchased Power: 2.536¢ per Kwh

Minimum Bill:

Basic Service Charge.

Payment:

Bills will be considered past due if not paid by the due date shown on the bill. Past due bills are subject to a late payment charge in accordance with the provisions of Rate 100 or any amendments or alterations thereto.

Date Filed: October 14, 2016

Effective Date:

Issued By: Tamie A. Aberle
Director – Regulatory Affairs

Case No.:



Montana-Dakota Utilities Co.

A Division of MDU Resources Group, Inc.

400 N 4th Street
Bismarck, ND 58501

State of North Dakota Electric Rate Schedule

NDPSC Volume 4
10th Revised Sheet No. 7
Canceling 9th Revised Sheet No. 7

OPTIONAL TIME-OF-DAY RESIDENTIAL ELECTRIC SERVICE Rate 16

Page 1 of 2

Availability:

In all communities served for single-phase residential electric service. The customer's wiring must be so arranged that all service can be measured through one meter.

Rate:

Basic Service Charge: \$0.75 per day

On-Peak Energy:

For all Kwh's used during peak hours designated as 12 p.m. to 8 p.m. local time, Monday through Friday.

October – May 6.711¢ per Kwh

June – September 8.211¢ per Kwh

Off-Peak Energy:

For all energy not covered by the On-Peak rating period.

October – May 3.711¢ per Kwh

June – September 5.211¢ per Kwh

Base Fuel and Purchased Power: 2.536¢ per Kwh

Minimum Bill:

Basic Service Charge.

Payment:

Bills will be considered past due if not paid by the due date shown on the bill. Past due bills are subject to a late payment charge in accordance with the provisions of Rate 100 or any amendments or alterations thereto.

Adjustment Clauses:

Bills are subject to the following adjustments or any amendments or alterations thereto:

1. Renewable Resource Cost Adjustment Rate 55
2. Generation Resource Recovery Rider Rate 56
3. Environmental Cost Recovery Rider Rate 57

Date Filed: October 14, 2016

Effective Date:

Issued By: Tamie A. Aberle
Director - Regulatory Affairs

Case No.:



Montana-Dakota Utilities Co.

A Division of MDU Resources Group, Inc.

400 N 4th Street
Bismarck, ND 58501

State of North Dakota Electric Rate Schedule

NDPSC Volume 4
8th Revised Sheet No. 10
Canceling 7th Revised Sheet No. 10

SMALL GENERAL ELECTRIC SERVICE Rate 20

Page 1 of 2

Availability:

In all communities served for all types of general electric service with billing demands that do not warrant the installation of a demand meter except outside lighting, standby, resale or other customers covered by special contracts or rate schedules applicable to specific services. The customer's wiring must be so arranged so that all service can be measured through one meter. If the customer does not connect his wiring into a single system, each meter shall constitute a separate billing unit.

Rate:

Basic Service Charge:	\$0.84 per day
Energy Charge:	
October – May:	
First 750 Kwh per month	7.212¢ per Kwh
Over 750 Kwh per month	4.212¢ per Kwh
June – September:	7.212¢ per Kwh
Base Fuel and Purchased Power:	2.536¢ per Kwh

Minimum Bill:

Basic Service Charge.

Payment:

Bills will be considered past due if not paid by the due date shown on the bill. Past due bills are subject to a late payment charge in accordance with the provisions of Rate 100 or any amendments or alterations thereto.

Adjustment Clauses:

Bills are subject to the following adjustments or any amendments or alterations thereto:

1. Renewable Resource Cost Adjustment Rate 55
2. Generation Resource Recovery Rider Rate 56
3. Environmental Cost Recovery Rider Rate 57
4. Fuel and Purchased Power Adjustment Rate 58
5. Transmission Cost Adjustment Rate 59

Date Filed: October 14, 2016

Effective Date:

Issued By: Tamie A. Aberle
Director - Regulatory Affairs

Case No.:



Montana-Dakota Utilities Co.

A Division of MDU Resources Group, Inc.

400 N 4th Street
Bismarck, ND 58501

State of North Dakota Electric Rate Schedule

NDPSC Volume 4
4th Revised Sheet No. 14
Canceling 3rd Revised Sheet No. 14

IRRIGATION POWER SERVICE Rate 25

Page 1 of 2

Availability:

For irrigation power service.

Rate:

Basic Service Charge:	\$1.50 per day
Demand Charge:	
October – May	\$1.25 per Kw
June – September	\$5.00 per Kw
Energy Charge:	0.782¢ per Kwh
Base Fuel and Purchased Power:	2.536¢ per Kwh

Minimum Bill:

Basic Service Charge.

Payment:

Bills will be considered past due if not paid by the due date shown on the bill. Past due bills are subject to a late payment charge in accordance with the provisions of Rate 100 or any amendments or alterations thereto.

Power Factor Clause:

The Company reserves the right to require the customer to install adequate equipment so that at all times it can operate its facilities to maintain a power factor between 90% lagging and 90% leading. If the customer operates outside this range, the maximum 15 minute integrated reactive kilovolt amperes in excess of 50% of the maximum 15 minute integrated kilowatt demand for the same month will be billed at \$3.35 per Kvar of such excess demand.

Determination of Billing Demand:

The demand in kilowatts for billing purposes shall be the maximum 15 minute measured demand in the current month. Demands will be determined to the nearest one-tenth kilowatt. Customers whose loads have rapidly fluctuating and/or intermittent demand characteristics shall be subject to special rules and regulations.

Date Filed: October 14, 2016

Effective Date:

Issued By: Tamie A. Aberle
Director – Regulatory Affairs

Case No.:



Montana-Dakota Utilities Co.

A Division of MDU Resources Group, Inc.

400 N 4th Street
Bismarck, ND 58501

State of North Dakota Electric Rate Schedule

NDPSC Volume 4
10th Revised Sheet No. 15
Canceling 9th Revised Sheet No. 15

OPTIONAL TIME-OF-DAY SMALL GENERAL ELECTRIC SERVICE Rate 26

Page 1 of 2

Availability:

In all communities served for all types of general electric service with billing demands that do not warrant the installation of a demand meter except outside lighting, standby, resale, or other customers covered by special contracts or rate schedules applicable to specific services. The customer's wiring must be arranged so that all service can be measured through one meter.

Rate:

Basic Service Charge: \$1.00 per day

On-Peak Energy:

For all Kwh's used during peak hours designated as 12 p.m. to 8 p.m. local time, Monday through Friday.

October – May 5.970¢ per Kwh
June – September 7.470¢ per Kwh

Off-Peak Energy:

For all energy not covered by the On-Peak rating period.

October – May 3.470¢ per Kwh
June – September 4.970¢ per Kwh

Base Fuel and Purchased Power: 2.536¢ per Kwh

Minimum Bill:

Basic Service Charge.

Payment:

Bills will be considered past due if not paid by the due date shown on the bill. Past due bills are subject to a late payment charge in accordance with the provisions of Rate 100 or any amendments or alterations thereto.

Adjustment Clauses:

Bills are subject to the following adjustments or any amendments or alterations thereto:

1. Renewable Resource Cost Adjustment Rate 55
2. Generation Resource Recovery Rider Rate 56
3. Environmental Cost Recovery Rider Rate 57

Date Filed: October 14, 2016

Effective Date:

Issued By: Tamie A. Aberle
Director - Regulatory Affairs

Case No.:



Montana-Dakota Utilities Co.

A Division of MDU Resources Group, Inc.

400 N 4th Street
Bismarck, ND 58501

State of North Dakota Electric Rate Schedule

NDPSC Volume 4
4th Revised Sheet No. 18
Canceling 3rd Revised Sheet No. 18

GENERAL ELECTRIC SERVICE Rate 30

Page 1 of 2

Availability:

In all communities served for all types of demand metered general electric service except outside lighting, standby, resale or other customers covered by special contracts or rate schedules applicable to specific services. The customer's wiring must be arranged so that all service can be measured through one meter. If the customer does not connect his wiring into a single system, each meter shall constitute a separate billing unit.

Rate:

Primary Service:

Basic Service Charge: \$100.00 per month

Demand Charge:

October – May \$11.00 per Kw

June – September \$14.00 per Kw

Energy Charge: 2.110¢ per Kwh

Base Fuel and Purchased Power: 2.454¢ per Kwh

Secondary Service:

Basic Service Charge: \$56.00 per month

Demand Charge:

October – May \$ 9.50 per Kw

June – September \$12.50 per Kw

Energy Charge: 3.110¢ per Kwh

Base Fuel and Purchased Power: 2.536¢ per Kwh

Minimum Bill:

Basic Service Charge.

Payment:

Bills will be considered past due if not paid by the due date shown on the bill. Past due bills are subject to a late payment charge in accordance with the provisions of Rate 100 or any amendments or alterations thereto.

Date Filed: October 14, 2016

Effective Date:

Issued By: Tamie A. Aberle
Director – Regulatory Affairs

Case No.:



Montana-Dakota Utilities Co.

A Division of MDU Resources Group, Inc.

400 N 4th Street
Bismarck, ND 58501

State of North Dakota Electric Rate Schedule

NDPSC Volume 4
6th Revised Sheet No. 19
Canceling 5th Revised Sheet No. 19

OPTIONAL TIME-OF-DAY GENERAL ELECTRIC SERVICE Rate 31

Page 1 of 3

Availability:

In all communities served for all types of demand metered general electric service except outside lighting, standby, resale, or other customers covered by special contracts or rate schedules applicable to specific services. The customer's wiring must be arranged so that all service can be measured through one meter.

Rate:

Primary Service:

Basic Service Charge: \$83.00 per month

On-Peak Demand:

October - May \$11.00 per Kw

June - September \$14.00 per Kw

Off-Peak Demand:

(In excess of On-Peak) \$2.00 per Kw

On-Peak Energy:

For all Kwh's used during peak hours designated as 12 p.m. to 8 p.m. local time, Monday through Friday. 2.714¢ per Kwh

Off-Peak Energy:

For all energy not covered by the On-Peak rating period. 1.864¢ per Kwh

Base Fuel and Purchased Power: 2.454¢ per Kwh

Secondary Service:

Basic Service Charge: \$72.00 per month

On-Peak Demand:

October - May \$9.50 per Kw

Date Filed: October 14, 2016

Effective Date:

Issued By: Tamie A. Aberle
Director - Regulatory Affairs

Case No.:



Montana-Dakota Utilities Co.

A Division of MDU Resources Group, Inc.

400 N 4th Street
Bismarck, ND 58501

State of North Dakota Electric Rate Schedule

NDPSC Volume 4
10th Revised Sheet No. 19.1
Canceling 9th Revised Sheet No. 19.1

OPTIONAL TIME-OF-DAY GENERAL ELECTRIC SERVICE Rate 31

Page 2 of 3

June – September \$12.50 per Kw

Off-Peak Demand:
(In excess of On-Peak) \$2.00 per Kw

On-Peak Energy:
For all Kwh's used during peak
hours designated as 12 p.m.
to 8 p.m. local time, Monday
through Friday. 3.714¢ per Kwh

Off-Peak Energy:
For all energy not covered by
the On-Peak rating period. 2.864¢ per Kwh

Base Fuel and Purchased Power: 2.536¢ per Kwh

Minimum Bill:

Basic Service Charge.

Payment:

Bills will be considered past due if not paid by the due date shown on the bill.
Past due bills are subject to a late payment charge in accordance with the
provisions of Rate 100 or any amendments or alterations thereto.

Adjustment Clauses:

Bills are subject to the following adjustments or any amendments or alterations
thereto:

1. Renewable Resource Cost Adjustment Rate 55
2. Generation Resource Recovery Rider Rate 56
3. Environmental Cost Recovery Rider Rate 57
4. Fuel and Purchased Power Adjustment Rate 58
5. Transmission Cost Adjustment Rate 59

Determination of On-Peak Billing Demand:

The demand in kilowatts for billing purposes shall be the maximum 15 minute

Date Filed: October 14, 2016

Effective Date:

Issued By: Tamie A. Aberle
Director – Regulatory Affairs

Case No.:



Montana-Dakota Utilities Co.

A Division of MDU Resources Group, Inc.

400 N 4th Street
Bismarck, ND 58501

State of North Dakota Electric Rate Schedule

NDPSC Volume 4
4th Revised Sheet No. 19.2
Canceling 3rd Revised Sheet No. 19.2

OPTIONAL TIME-OF-DAY GENERAL ELECTRIC SERVICE Rate 31

Page 3 of 3

measured demand for the on-peak period in the current month. Demands will be determined to the nearest one-tenth kilowatt. Customers whose loads have rapidly fluctuating and/or intermittent demand characteristics shall be subject to special rules and regulations.

Power Factor Clause:

The Company reserves the right to require the customer to install adequate equipment so that at all times it can operate its facilities to maintain a power factor between 90% lagging and 90% leading. If the customer operates outside this range, the maximum 15 minute integrated reactive kilovolt amperes in excess of 50% of the maximum 15 minute integrated kilowatt demand for the same month will be billed at \$3.35 per Kvar of such excess demand.

Contract Terms:

Customer agrees to contract for service under the Optional Time-of-Day General Electric Service rate for a minimum period of one year. At the end of a one-year period, customer shall have the option of remaining under the Optional Time-of-Day General Electric Service rate or returning to the regular General Electric Service rate.

General Terms and Conditions:

1. Customers and their architects, contractors and electricians should consult with the Company before proceeding to design or erect installations in which there will be a substantial electric load, to make sure their equipment will meet requirements and receive adequate service.
2. Primary service rate is applicable to customers that own their own transformers, related equipment and distribution facilities downstream of the meter, satisfactory to the Company so customer can receive service and be metered at primary voltages of 2,400 volts or greater.
3. The foregoing schedule is subject to Rates 100-112 and any amendments or alterations thereto or additional rules and regulations promulgated by the Company under the laws of the state.

Date Filed: October 14, 2016

Effective Date:

Issued By: Tamie A. Aberle
Director – Regulatory Affairs

Case No.:



Montana-Dakota Utilities Co.

A Division of MDU Resources Group, Inc.

400 N 4th Street
Bismarck, ND 58501

State of North Dakota Electric Rate Schedule

NDPSC Volume 4
5th Revised Sheet No. 20
Canceling 4th Revised Sheet No. 20

GENERAL ELECTRIC SPACE HEATING SERVICE Rate 32

Page 1 of 3

Availability:

In all communities served for space heating service, where the customer also takes service under another general service rate schedule offered by the Company. Space heating equipment, including combination space heating and cooling equipment such as heat pumps and packaged roof-top heating/cooling units where heating use is the principal load may be served under this rate schedule.

Rate:

Basic Service Charge: \$21.00 per month

Primary Service:

Demand Charge:
June – September \$14.00 per Kw
October – May \$ 1.05 per Kw

Energy Charge: 2.110¢ per Kwh

Base Fuel and Purchased Power: 2.454¢ per Kwh

Secondary Service:

Demand Charge:
June – September \$12.50 per Kw
October – May \$ 1.05 per Kw

Energy Charge: 3.110¢ per Kwh

Base Fuel and Purchased Power: 2.536¢ per Kwh

Minimum Bill:

Basic Service Charge.

Payment:

Bills will be considered past due if not paid by the due date shown on the bill.
Past due bills are subject to a late payment charge in accordance with the

Date Filed: October 14, 2016

Effective Date:

Issued By: Tamie A. Aberle
Director - Regulatory Affairs

Case No.:



Montana-Dakota Utilities Co.

A Division of MDU Resources Group, Inc.

400 N 4th Street
Bismarck, ND 58501

State of North Dakota Electric Rate Schedule

NDPSC Volume 4
9th Revised Sheet No. 20.1
Canceling 8th Revised Sheet No. 20.1

GENERAL ELECTRIC SPACE HEATING SERVICE Rate 32

Page 2 of 3

provisions of Rate 100 or any amendments or alterations thereto.

Determination of Billing Demand:

The demand in kilowatts for billing purposes shall be the maximum 15 minute measured demand in the current month. Demands will be determined to the nearest one-tenth kilowatt. Customers whose loads have rapidly fluctuating and/or intermittent demand characteristics shall be subject to special rules and regulations.

Power Factor Clause:

The Company reserves the right to require the customer to install adequate equipment so that at all times it can operate its facilities to maintain a power factor between 90% lagging and 90% leading. If the customer operates outside this range, the maximum 15 minute integrated reactive kilovolt amperes in excess of 50% of the maximum 15 minute integrated kilowatt demand for the same month will be billed at \$3.35 per Kvar of such excess demand.

Adjustment Clauses:

Bills are subject to the following adjustments or any amendments or alterations thereto:

1. Renewable Resource Cost Adjustment Rate 55
2. Generation Resource Recovery Rider Rate 56
3. Environmental Cost Recovery Rider Rate 57
4. Fuel and Purchased Power Adjustment Rate 58
5. Transmission Cost Adjustment Rate 59

General Terms and Conditions:

1. Customers or their architects, contractors and electricians should consult with the Company before proceeding to design or erect installations in which there will be a substantial electric load, to make sure their equipment will meet requirements and receive adequate service.
2. Primary service rate is applicable to customers that own their own transformers, related equipment and distribution facilities downstream of the meter, satisfactory to the Company so customer can receive service and be metered at primary voltages of 2,400 volts or greater.

Date Filed: October 14, 2016

Effective Date:

Issued By: Tamie A. Aberle
Director - Regulatory Affairs

Case No.:



Montana-Dakota Utilities Co.

A Division of MDU Resources Group, Inc.

400 N 4th Street
Bismarck, ND 58501

State of North Dakota Electric Rate Schedule

NDPSC Volume 4
3rd Revised Sheet No. 22
Canceling 2nd Revised Sheet No. 22

FIRM SERVICE ECONOMIC DEVELOPMENT Rate 34

Page 1 of 3

Availability:

In all communities served for all types of general electric service which meets one of the following qualifications:

1. New Customers - An applicant with total expected demand of 200 Kw per month and usage of 750,000 Kwh per year is eligible for service under this rate if it can meet any one of the following requirements: (i) its activities are largely or entirely different than that of the previous customer; (ii) that non-seasonal business has not been conducted at the premise for at least three billing periods prior to the application; (iii) that seasonal business has not been conducted at the premise for at least thirteen billing periods prior to the application; or (iv) the facility is newly constructed.
2. Existing Customers and Existing In-state Customers of Competing Suppliers - An existing customer, or an existing in-state customer of a competing supplier with increased demand of 200 Kw per month and increased usage of 750,000 Kwh per year is eligible for service under this rate. Only the expanded portion of the facility will be eligible for the negotiated rate. In addition, the new load must be supplied from a separately metered circuit with separate metering equipment to be installed at the customer's expense. Average usage at the original facility must be at least as great as that which occurred in the previous 12 month period.

Rate:

Basic Service Charge:	\$100.00 per month
Demand Charge:	To Be Negotiated
Energy Charge:	Otherwise applicable energy charge for General Service Rate 30.

Minimum Bill:

Basic Service Charge plus Demand Charge.

Date Filed: October 14, 2016

Effective Date:

Issued By: Tamie A. Aberle
Director – Regulatory Affairs

Case No.:



Montana-Dakota Utilities Co.

A Division of MDU Resources Group, Inc.
400 N 4th Street
Bismarck, ND 58501

State of North Dakota Electric Rate Schedule

NDPSC Volume 4
4th Revised Sheet No. 23
Canceling 3rd Revised Sheet No. 23

INTERRUPTIBLE LARGE POWER DEMAND RESPONSE Rate 38

Page 1 of 4

Availability:

In all communities served for power to customers having a demand of 500 Kw or more for its interruptible load available for interruption for up to 100 hours annually. Electric energy for the interruptible load shall be supplied through a separately metered circuit at the same voltage and phase utilized to serve the balance of the customer's electrical load so arranged to allow remote operation by the Company.

Type of Service:

Service under this rate shall be taken by the customer at whatever primary voltage is available at the point of delivery but not less than 2,400 volts. In the event that it is necessary to build a substation on the Company's transmission line to serve the customer, the cost of building the substation shall be a matter of negotiation between the Company and the customer.

Rate:

Basic Service Charge:	Specified in the electric service agreement with the Company.
Demand Charge:	
October – May	\$ 9.50 per Kw
June – September	\$11.00 per Kw
Energy Charge:	1.617¢ per Kwh
Base Fuel and Purchased Power:	2.454¢ per Kwh

Minimum Bill:

Basic Service Charge plus the Demand Charge (500 Kw minimum).

Payment:

Bills will be considered past due if not paid by the due date shown on the bill. Past due bills are subject to a late payment charge in accordance with the provisions of Rate 100 or any amendments or alterations thereto.

Date Filed: October 14, 2016

Effective Date:

Issued By: Tamie A. Aberle
Director - Regulatory Affairs

Case No.:



Montana-Dakota Utilities Co.

A Division of MDU Resources Group, Inc.

400 N 4th Street
Bismarck, ND 58501

State of North Dakota Electric Rate Schedule

NDPSC Volume 4
4th Revised Sheet No. 25
Canceling 3rd Revised Sheet No. 25

SMALL MUNICIPAL ELECTRIC SERVICE Rate 40 (CLOSED)

Page 1 of 3

Availability:

For all lighting and power requirements with billing demands of 50 kilowatts or less for public buildings or locations supported by public tax levies, and for which the city is liable for payment, in all municipalities served where the Company is operating under a municipal franchise or permit, and the municipality has a standard contract for operation of a street lighting system and/or a municipal pumping system with the Company.

This rate is restricted to small municipal electric service customers who were served under this rate prior to January 27, 1987. Any new small municipal general electric service customer may take service under another applicable rate.

Rate:

Non-Demand:

Basic Service Charge: \$0.84 per day

Energy Charge:

October – May:

First 750 Kwh per month 4.444¢ per Kwh

Over 750 Kwh per month 3.344¢ per Kwh

June – September: 4.444¢ per Kwh

Base Fuel and Purchased Power: 2.536¢ per Kwh

Demand:

Basic Service Charge: \$1.00 per day

Demand Charge:

October – May:

10 Kw or less No Charge

Over 10 Kw \$ 8.25 per Kw

June – September: \$11.25 per Kw

Energy Charge: 2.444¢ per Kwh

Base Fuel and Purchased Power: 2.536¢ per Kwh

Date Filed: October 14, 2016

Effective Date:

Issued By: Tamie A. Aberle
Director – Regulatory Affairs

Case No.:



Montana-Dakota Utilities Co.

A Division of MDU Resources Group, Inc.
400 N 4th Street
Bismarck, ND 58501

State of North Dakota Electric Rate Schedule

NDPSC Volume 4
7th Revised Sheet No. 26
Canceling 6th Revised Sheet No. 26

MUNICIPAL LIGHTING SERVICE Rate 41

Page 1 of 2

Availability:

For municipal lighting purposes including streets, alleys and other public grounds. Service will be provided all night, every night in the year with a minimum service requirement of 4,000 hours annually, and must be covered by written contract.

Rate:

Primary Service:	
Energy Charge:	5.671¢ per Kwh
Base Fuel and Purchased Power:	2.454¢ per Kwh
Secondary Service:	
Energy Charge:	6.171¢ per Kwh
Base Fuel and Purchased Power:	2.536¢ per Kwh

Discount: For contracts of ten years or more 10%

Kwh shall be computed according to the total rated capacity of lamps in use.

Minimum Bill:

As provided in contract.

Payment:

Bills will be considered past due if not paid by the due date shown on the bill. Past due bills are subject to a late payment charge in accordance with the provisions of Rate 100 or any amendments or alterations thereto.

Adjustment Clauses:

Bills are subject to the following adjustments or any amendments or alterations thereto:

1. Renewable Resource Cost Adjustment Rate 55
2. Environmental Cost Recovery Rider Rate 57
3. Fuel and Purchased Power Adjustment Rate 58
4. Transmission Cost Adjustment Rate 59

Date Filed: October 14, 2016

Effective Date:

Issued By: Tamie A. Aberle
Director - Regulatory Affairs

Case No.:



Montana-Dakota Utilities Co.

A Division of MDU Resources Group, Inc.

400 N 4th Street
Bismarck, ND 58501

State of North Dakota Electric Rate Schedule

NDPSC Volume 4
4th Revised Sheet No. 32
Canceling 3rd Revised Sheet No. 32

MUNICIPAL PUMPING SERVICE Rate 48

Page 1 of 3

Availability:

For municipal pumping purposes provided the municipality uses electricity exclusively for all its pumping requirements and purchases all such electricity from the Company. The municipality must sign a contract for a minimum period of one year.

Rate:

Primary Service:

Basic Service Charge: \$80.00 per month

Demand Charge:

Connected loads of 10 Kw or less will be billed based on connected load. Connected loads in excess of 10 Kw will be billed based upon the greater of the highest 15 minute interval demand as registered upon a demand meter in the current month or 10 Kw.

October – May: \$6.00 per Kw

June – September: \$9.00 per Kw

Energy Charge: 2.708¢ per Kwh

Base Fuel and Purchased Power: 2.454¢ per Kwh

Secondary Service:

Basic Service Charge: \$45.00 per month

Demand Charge:

Connected loads of 10 Kw or less will be billed based on connected load. Connected loads in excess of 10 Kw will be billed based upon the greater of the highest 15 minute interval demand as registered upon a demand meter in the current month or 10 Kw.

October – May: \$6.00 per Kw

June – September: \$9.00 per Kw

Energy Charge: 2.808¢ per Kwh

Date Filed: October 14, 2016

Effective Date:

Issued By: Tamie A. Aberle
Director - Regulatory Affairs

Case No.:



Montana-Dakota Utilities Co.

A Division of MDU Resources Group, Inc.

400 N 4th Street
Bismarck, ND 58501

State of North Dakota Electric Rate Schedule

NDPSC Volume 4
8th Revised Sheet No. 32.1
Canceling 7th Revised Sheet No. 32.1

MUNICIPAL PUMPING SERVICE Rate 48

Page 2 of 3

Base Fuel and Purchased Power: 2.536¢ per Kwh

Discount: For contracts of ten years or more 10%

Minimum Bill:

Basic Service Charge plus Demand Charge.

Payment:

Bills will be considered past due if not paid by the due date shown on the bill. Past due bills are subject to a late payment charge in accordance with the provisions of Rate 100 or any amendments or alterations thereto.

Power Factor Clause:

The Company reserves the right to require the customer to install adequate equipment so that at all times it can operate its facilities to maintain a power factor between 90% lagging and 90% leading. If the customer operates outside this range, the maximum 15 minute integrated reactive kilovolt amperes in excess of 50% of the maximum 15 minute integrated kilowatt demand for the same month will be billed at \$3.35 per Kvar of such excess demand.

Adjustment Clauses:

Bills are subject to the following adjustments or any amendments or alterations thereto:

1. Renewable Resource Cost Adjustment Rate 55
2. Generation Resource Recovery Rider Rate 56
3. Environmental Cost Recovery Rider Rate 57
4. Fuel and Purchased Power Adjustment Rate 58
5. Transmission Cost Adjustment Rate 59

General Terms and Conditions:

1. Primary service rate is applicable to customers that own their own transformers, related equipment and distribution facilities downstream of the meter, satisfactory to the Company so customer can receive service and be metered at primary voltages of 2,400 volts or greater.

Date Filed: October 14, 2016

Effective Date:

Issued By: Tamie A. Aberle
Director - Regulatory Affairs

Case No.:



Montana-Dakota Utilities Co.

A Division of MDU Resources Group, Inc.

400 N 4th Street
Bismarck, ND 58501

State of North Dakota Electric Rate Schedule

NDPSC Volume 4
8th Revised Sheet No. 36
Canceling 7th Revised Sheet No. 36

OUTDOOR LIGHTING SERVICE Rate 52

Page 1 of 2

Availability:

For all outdoor lighting including flood lights, billboard lighting, metallic vapor yard lights, and Christmas lights in all communities served. Lighting equipment may be Company-owned or customer-owned.

Rate:

Primary Service:

Energy Charge: 6.998¢ per Kwh

Base Fuel and Purchased Power: 2.454¢ per Kwh

Secondary Service:

Energy Charge: 7.404¢ per Kwh

Base Fuel and Purchased Power: 2.536¢ per Kwh

Kwh shall be computed according to the total rated capacity of the units in use.

Payment:

Bills will be considered past due if not paid by the due date shown on the bill. Past due bills are subject to a late payment charge in accordance with the provisions of Rate 100 or any amendments or alterations thereto.

Adjustment Clauses:

Bills are subject to the following adjustments or any amendments or alterations thereto:

1. Renewable Resource Cost Adjustment Rate 55
2. Generation Resource Recovery Rider Rate 56
3. Environmental Cost Recovery Rider Rate 57
4. Fuel and Purchased Power Adjustment Rate 58
5. Transmission Cost Adjustment Rate 59

General Terms and Conditions:

1. Applicable to Company-owned Facilities:
 - a. The Company will install, own and operate the flood light(s), and yard light(s) including a suitable reflector, bracket for mounting and automatic device to control operating hours set to operate from dusk to dawn.

Date Filed: October 14, 2016

Effective Date:

Issued By: Tamie A. Aberle
Director - Regulatory Affairs

Case No.:



Montana-Dakota Utilities Co.

A Division of MDU Resources Group, Inc.

400 N 4th Street
Bismarck, ND 58501

State of North Dakota Electric Rate Schedule

NDPSC Volume 4
1st Revised Sheet No. 39
Canceling Original Sheet No. 39

Renewable Resource Cost Adjustment Rate 55

Page 1 of 2

1. Applicability:

This rate schedule represents a Renewable Resource Cost Adjustment (RRCA) and specifies the procedure to be utilized to recover the jurisdictional costs associated with renewable generation resource modifications or additions approved by the Commission, but not recovered through retail rates. Costs to be recovered may include operation and maintenance expenditures, depreciation, taxes, and a current return on the project costs.

2. Renewable Resource Cost Adjustment:

- a. An adjustment per Kwh will be calculated using the projected capital costs and related expenses, along with the forecasted Kwh sales, to determine a North Dakota jurisdictional revenue requirement to be recovered through the RRCA rates. The return component of the revenue requirement calculation will include the return on equity established in the Company's most recent rate case.
- b. The RRCA is applicable to all retail customers for electric energy sold, except those served under special contracts, and are allocated amongst the rate classes based on the Company's Demand/Energy Factor No. 3 established in the Company's most recent general rate case.
- c. The RRCA will be adjusted annually (or other period authorized by the Commission) to reflect the Company's most recent projected capital costs and related expenses for projects determined to be recoverable under this schedule.
- d. A true-up will reflect any over or under collection of revenue under the RRCA based on actual expenditures from the preceding twelve month recovery period plus carrying charges or credits accrued at a rate equal to the three-month Treasury Bill rate as published monthly by the Federal Reserve Board.

3. Time and Manner of the Filing:

Montana-Dakota shall file the RRCA at least 60 days prior to the proposed effective date. The filing by Montana-Dakota shall be made by means of a revised RRCA tariff sheet identifying the amounts of the adjustment, the derivation of the RRCA and the resulting RRCA by class.

Date Filed: October 14, 2016

Effective Date:

Issued By: Tamie A. Aberle
Director – Regulatory Affairs

Case No.:



Montana-Dakota Utilities Co.

A Division of MDU Resources Group, Inc.

400 N 4th Street
Bismarck, ND 58501

State of North Dakota Electric Rate Schedule

NDPSC Volume 4
1st Revised Sheet No. 39.1
Canceling Original Sheet No. 39.1

Renewable Resource Cost Adjustment Rate 55

Page 2 of 2

4. Renewable Resource Cost Adjustment:

Residential & Small General	\$0.00706 per Kwh
Large General	\$0.00681 per Kwh
Lighting	\$0.00612 per Kwh

Date Filed: October 14, 2016

Effective Date:

Issued By: Tamie A. Aberle
Director – Regulatory Affairs

Case No.:



Montana-Dakota Utilities Co.

A Division of MDU Resources Group, Inc.

400 N 4th Street
Bismarck, ND 58501

State of North Dakota Electric Rate Schedule

NDPSC Volume 4
2nd Revised Sheet No. 40
Canceling 1st Revised Sheet No. 40

Generation Resource Recovery Rider Rate 56

Page 1 of 2

Applicability:

This rate schedule represents a Generation Resource Recovery Rider (GRRR) and specifies the procedure to be utilized to recover the jurisdictional costs associated with generation resource additions approved by the Commission but not recovered through retail rates. Costs to be recovered may include operations and maintenance expenditures, depreciation, taxes, and a current return on the project costs during construction. Costs being recovered under this tariff are currently not included in the rates established at the time of the Company's last general rate case.

1. Generation Resource Recovery Rider:

- a. The North Dakota jurisdictional GRRR revenue requirement will be allocated to the customer classes based on the Company's Demand Factor No. 2 established in the Company's most recent general rate case. The adjustment applied to the Residential and Small General Service Classes will be calculated based on the customer class revenue requirement and the forecasted Kwh for the forecasted period. The adjustment applied to the Large General Service Class will be calculated based on the customer class revenue requirement and the forecasted demand for the forecasted period and expressed as a KW charge. The return component of the revenue requirement calculation will include authorized return on equity from the Company's most recent general rate case.
- b. The GRRR is applicable to all retail customers for electric energy sold, except those served under lighting schedules and special contracts, and are allocated amongst the rate classes based on the applicable demand factor.
- c. The GRRR will be adjusted annually (or other period authorized by the Commission) to reflect the Company's most recent projected capital costs and related expenses for projects determined to be recoverable under this schedule.
- d. A true-up will reflect any over or under collection of revenue under the GRRR based on actual expenditures from the preceding twelve month recovery period plus carrying charges or credits accrued at a rate equal to the three-month Treasury Bill rate as published monthly by the Federal Reserve Board.

Date Filed: October 14, 2016

Effective Date:

Issued By: Tamie A. Aberle
Director – Regulatory Affairs

Case No.:



Montana-Dakota Utilities Co.

A Division of MDU Resources Group, Inc.

400 N 4th Street
Bismarck, ND 58501

State of North Dakota Electric Rate Schedule

NDPSC Volume 4

3rd Revised Sheet No. 40.1

Canceling 2nd Revised Sheet No. 40.1

Generation Resource Recovery Rider Rate 56

Page 2 of 2

2. Time and Manner of the Filing:

Montana-Dakota shall file the GRRR at least 60 days prior to the proposed effective date. The filing by Montana-Dakota shall be made by means of a revised GRRR tariff sheet identifying the amounts of the adjustment, the derivation of the GRRR and the resulting GRRR by class.

3. Generation Resource Recovery Rider:

Residential	\$0.00000 per Kwh
Small General	\$0.00000 per Kwh
Large General	\$0.00 per KW

Date Filed: October 14, 2016

Effective Date:

Issued By: Tamie A. Aberle
Director – Regulatory Affairs

Case No.:



Montana-Dakota Utilities Co.

A Division of MDU Resources Group, Inc.

400 N 4th Street
Bismarck, ND 58501

State of North Dakota Electric Rate Schedule

NDPSC Volume 4
4th Revised Sheet No. 41
Canceling 3rd Revised Sheet No. 41

Environmental Cost Recovery Rider Rate 57

Page 1 of 2

1. Applicability:

This rate schedule represents an Environmental Cost Recovery Rider (ECRR) and specifies the procedure to be utilized to recover the jurisdictional costs to be incurred by the Company in complying with federal and state environmental mandates determined to be eligible for recovery under NDCC 49-05-04.2. Costs to be recovered may include capital expenditures, depreciation, taxes, and a current return on the project costs during construction. Costs being recovered under this tariff are currently not included in the rates established at the time of the Company's last general rate case.

2. Environmental Cost Recovery Rider:

- a. An adjustment per Kwh will be calculated using the projected capital costs and related expenses, along with the forecasted Kwh sales, to determine a North Dakota jurisdictional revenue requirement to be recovered through the ECRR. The return component of the revenue requirement calculation will be the authorized rate of return from the Company's most recent general rate case.
- b. The ECRR is applicable to all retail customers for electric energy sold, except those served under special contracts, and are allocated amongst the rate classes based on the Company's Demand Factor No. 2 established in the Company's most recent general rate case.
- c. The ECRR will be adjusted annually (or other period authorized by the Commission) to reflect the Company's most recent projected capital costs and related expenses for projects determined to be eligible under NDCC 49-05-04.2.
- d. A true-up will reflect any over or under collection of revenue under the ECRR based on actual expenditures from the preceding twelve month recovery period plus carrying charges or credits accrued at a rate equal to the three-month Treasury Bill rate as published monthly by the Federal Reserve Board.

3. Time and Manner of the Filing:

Montana-Dakota shall file the ECRR at least 30 days prior to the proposed effective date. The filing by Montana-Dakota shall be made by means of a revised ECRR tariff sheet identifying the amounts of the adjustment, the derivation of the ECRR and the resulting ECRR by class.

Date Filed: October 14, 2016

Effective Date:

Issued By: Tamie A. Aberle
Director - Regulatory Affairs

Case No.:



Montana-Dakota Utilities Co.

A Division of MDU Resources Group, Inc.

400 N 4th Street
Bismarck, ND 58501

State of North Dakota Electric Rate Schedule

NDPSC Volume 4
5th Revised Sheet No. 41.1
Canceling 4th Revised Sheet No. 41.1

Environmental Cost Recovery Rider Rate 57

Page 2 of 2

4. Environmental Cost Recovery Rider:

Residential and Small General	0.000¢ per Kwh
Large General	0.000¢ per Kwh
Lighting	0.000¢ per Kwh

Date Filed: October 14, 2016

Effective Date:

Issued By: Tamie A. Aberle
Director - Regulatory Affairs

Case No.:



Montana-Dakota Utilities Co.

A Division of MDU Resources Group, Inc.

400 N 4th Street
Bismarck, ND 58501

State of North Dakota Electric Rate Schedule

NDPSC Volume 4
6th Revised Sheet No. 42
Canceling 5th Revised Sheet No. 42

FUEL AND PURCHASED POWER ADJUSTMENT Rate 58

Page 1 of 3

1. Applicability:

This rate schedule sets forth the procedure to be used in calculating the Fuel and Purchased Power Adjustment (FPPA). It specifies the procedure to be utilized to adjust the rates for electricity sold under Montana-Dakota's rate schedules in order to reflect: (a) changes in Montana-Dakota's average cost of fuel and purchased power as allocated to North Dakota; and (b) amortization of the Deferred Fuel Cost Account.

2. Effective Date and Limitation on Adjustments:

- a. Unless otherwise ordered by the Commission, the effective dates of the Fuel and Purchased Power Adjustment shall be service rendered on and after the first day of each month. The effective date of the adjustment for amortization of the Deferred Fuel Cost Account shall be April 1 of each year.
- b. Montana-Dakota shall file an adjustment to reflect changes in its average cost of electric supply only when the amount of change in such adjustment is at least .001 cents per Kwh. The adjustment to be effective April 1 shall be filed each year, regardless of the amount of the change.

3. Fuel and Purchased Power Adjustment:

- a. The monthly Fuel and Purchased Power Adjustment shall be calculated separately for primary service and secondary service customers and shall reflect the changes in Montana-Dakota's cost of fuel and purchased power as compared to the cost of fuel and purchased power approved in its base rates plus the annual Surcharge Adjustment. The base fuel and purchased power cost shall be 2.454¢ per Kwh for primary service and 2.536¢ per Kwh for secondary service as established in the most recent general rate case.
- b. The cost of fuel and purchased power shall be calculated separately for primary service customers and secondary service customers, and shall be the sum of the following costs for the most recent four month period, as allocated to North Dakota and to the primary and secondary customer classes:
 1. The cost of fossil and other fuels and reagents, including sand, recorded in Account Nos. 501, 502 and 547.

Date Filed: October 14, 2016

Effective Date:

Issued By: Tamie A. Aberle
Director- Regulatory Affairs

Case No.:



Montana-Dakota Utilities Co.

A Division of MDU Resources Group, Inc.

400 N 4th Street
Bismarck, ND 58501

State of North Dakota Electric Rate Schedule

NDPSC Volume 4

5th Revised Sheet No. 42.1

Canceling 4th Revised Sheet No. 42.1

FUEL AND PURCHASED POWER ADJUSTMENT Rate 58

Page 2 of 3

2. Natural gas and pipeline reservation charges recorded in Account No. 547
 3. The net cost of purchases and costs linked to the utility's load serving obligation associated with participation in the wholesale electric energy markets as recorded in Account No. 555
 4. Capacity purchases as recorded in Account No. 555.
 5. Regional Market Administration expenses recorded in Account No. 575.
 6. Less 100 percent of the wholesale sales revenue.
 7. Less the revenue from the sales of Renewable Energy Credits (RECs).
- c. The cost per Kwh for the month is the sum of 3(b) above divided by retail sales volumes for the most recent four month period for the primary and secondary service classes.

4. Surcharge Adjustment:

All sales rate schedules shall be subject to a Surcharge Adjustment to be effective on April 1 each year. The Surcharge Adjustment per Kwh sold shall reflect the amortization of the applicable balance in the Deferred Fuel Cost Account calculated by dividing the applicable balance by the estimated Kwh sales for the twelve months following the effective date of the adjustment.

- a. The balance in the Deferred Fuel Cost Account (Account 182.3) includes:
1. The current month over or under recovery, determined as follows:
 - i. Montana-Dakota shall determine each month the cost for that month's fuel and purchased power.
 - ii. Montana-Dakota shall subtract from the month's cost the cost reflected in rates for that month.

Date Filed: October 14, 2016

Effective Date:

Issued By: Tamie A. Aberle
Director- Regulatory Affairs

Case No.:



Montana-Dakota Utilities Co.

A Division of MDU Resources Group, Inc.

400 N 4th Street
Bismarck, ND 58501

State of North Dakota Electric Rate Schedule

NDPSC Volume 4

55th Revised Sheet No. 42.2

Canceling 54th Revised Sheet No. 42.2

FUEL AND PURCHASED POWER ADJUSTMENT Rate 58

Page 3 of 3

iii. The resulting difference (positive or negative) shall be included that month under each rate schedule.

2. Refunds from supplier(s) and market operators with respect to fuel and purchased power costs.

3. Carrying charges or credits at a rate equal to the three-month Treasury Bill rate as published monthly by the Federal Reserve Board.

4. The balance in the Deferred Fuel Cost Account shall be decreased each month by the amount of the Surcharge Adjustment multiplied by the Kwh sales for the month.

5. Manner of Filing:

The Company shall file a monthly statement showing the calculation of the Fuel and Purchased Power Adjustment with the Commission prior to implementing the monthly adjustment. The adjustment in rates shall be effective with service rendered on and after the first day of each month, unless the Commission shall otherwise order.

6. Fuel and Purchased Power Adjustment:

	<u>Primary</u>	<u>Secondary</u>
Base Fuel	2.454¢	2.536¢
Fuel and Purchased Power Adjustment	0.000	0.000
Total FPPA	2.454¢	2.536¢

Date Filed: October 14, 2016

Effective Date:

Issued By: Tamie A. Aberle
Director- Regulatory Affairs

Case No.:



Montana-Dakota Utilities Co.

A Division of MDU Resources Group, Inc.

400 N 4th Street
Bismarck, ND 58501

State of North Dakota Electric Rate Schedule

NDPSC Volume 4
5th Revised Sheet No. 43.1
4th Revised Sheet No. 43.1

TRANSMISSION COST ADJUSTMENT Rate 59

Page 2 of 2

d. The true-up will reflect any over or under collection of revenue under the Transmission Adjustment from the preceding twelve month period plus carrying charges or credits accrued at a rate equal to the three-month Treasury Bill rate as published monthly by the Federal Reserve Board.

3. Time and Manner of Filing:

Montana-Dakota shall file the Transmission Adjustment at least 30 days prior to the proposed effective date. The filing by Montana-Dakota shall be made by means of a revised Transmission Adjustment tariff sheet identifying the amounts of the adjustment, the derivation of the adjustment and the resulting Transmission Adjustment rate.

4. Transmission Cost Adjustment Rate by class:

Residential & Small General	\$0.00298
Large General	\$0.00253
Lighting	\$0.00116

Date Filed: October 14, 2016

Effective Date:

Issued By: Tamie A. Aberle
Director - Regulatory Affairs

Case No.:



Montana-Dakota Utilities Co.

A Division of MDU Resources Group, Inc.

400 N 4th Street
Bismarck, ND 58501

State of North Dakota Electric Rate Schedule

NDPSC Volume 4
2nd Revised Sheet No. 49
Cancelling 1st Revised Sheet No. 49

TABLE OF CONTENTS GENERAL PROVISIONS Rate 100

Page 1 of 9

<u>Title</u>	<u>Page No.</u>
I. Purpose	2
II. Definitions	2
III. General Terms and Conditions	3
1. Rules for Application of Electric Service	3-4
2. Consumer Deposits	4-5
3. Late Payment Charge	5
4. Returned Check Charge	5
5. Tax Clause	5-6
6. Utility Services Performed After Normal Business Hours	6
7. Reconnection Fee for Seasonal Customers	6
8. Discontinuance of Service for Nonpayment of Bill	6-7
9. Discontinuance of Service for Causes Other Than Nonpayment of Bills	7-8
10. Bill Discount for Qualifying Employees	8
11. Method of Computing Initial or Final Bills for Electric Service for Less Than a Full Monthly Billing Period	8
12. Selective Testing Plan for Meters	8
13. Billing Adjustments	9
14. Modification of Rates, Rules and Regulations	9

Date Filed: October 14, 2016

Effective Date:

Issued By: Tamie A. Aberle
Director of Regulatory Affairs

Case No.:



Montana-Dakota Utilities Co.

A Division of MDU Resources Group, Inc.

400 N 4th Street
Bismarck, ND 58501

State of North Dakota Electric Rate Schedule

NDPSC Volume 4
1st Revised Sheet No. 49.4
Canceling Original Sheet No. 49.4

GENERAL PROVISIONS Rate 100

Page 5 of 9

days after written request for termination is made to the utility by the guarantor. However, no agreement shall be terminated without the customer having made satisfactory settlement for any balance which the customer owes the Company. Upon termination of a guarantee contract, a new contract or a cash deposit may be required by the Company.

iii. A deposit shall earn interest at the rate paid by the Bank of North Dakota on a six-month certificate of deposit as of the first business day of each year. Interest shall be credited to the customer's account annually during the month of December.

iv. Deposits shall be refunded to customers at termination provided all billings for service have been paid. Deposits will be refunded to all active customers, after the deposit has been held for 12 months, provided a prompt payment record has been established.

3. LATE PAYMENT CHARGE:

Bills will be considered past due if not paid by the due date shown on the bill. An amount equal to 1% per month will be applied to any past due balance.

4. RETURNED CHECK CHARGE:

A charge of \$40.00 will be collected by the Company for each check charged back to the Company by a bank.

5. TAX CLAUSE:

In addition to the charges provided for in the electric tariffs of the Company, there shall be charged pro rata amounts which, on an annual basis, shall be sufficient to yield to the Company the full amount of any sales, use or excise taxes, whether they be denominated as license taxes, occupation taxes, business taxes, privilege taxes, or otherwise, levied against or imposed upon the Company by any municipality, political subdivision, or other entity, for the privilege of conducting its utility operations therein.

Date Filed: October 14, 2016

Effective Date:

Issued By: Tamie A. Aberle
Director of Regulatory Affairs

Case No.:



Montana-Dakota Utilities Co.

A Division of MDU Resources Group, Inc.

400 N 4th Street
Bismarck, ND 58501

State of North Dakota Electric Rate Schedule

NDPSC Volume 4
1st Revised Sheet No. 49.5
Canceling Original Sheet No. 49.5

GENERAL PROVISIONS Rate 100

Page 6 of 9

The charges to be added to the customer's service bills under this clause shall be limited to the customers within the corporate limits of the municipality, political subdivision or other entity imposing the tax.

6. UTILITY SERVICES PERFORMED AFTER NORMAL BUSINESS HOURS:

For service requested by customers after the Company's normal business hours and on Saturday, Sunday, or legal holidays, a charge will be made for labor at standard overtime service rates and materials at retail prices.

Customers requesting service after the Company's normal business hours will be informed of the after hour service rate and encouraged to have the service performed during normal business hours.

7. RECONNECTION FEE FOR SEASONAL CUSTOMERS:

A charge will be collected for reconnecting electric service to a customer who requests reconnection of service, at a location where the same customer discontinued the same service during the preceding twelve-month period.

Applicable Charge:

- i. Customers with non-demand meters: \$20.00
- ii. Customers with demand meters: \$40.00

8. DISCONTINUANCE OF SERVICE FOR NONPAYMENT OF BILL:

- i. Pursuant to North Dakota Administrative Rules 69-09-02-05.1(1), the Company may disconnect service if the customer is delinquent in payment for service, and fails to pay for service or enter into a satisfactory installment agreement with the Company for payment within ten (10) days of the Company giving the customer written notice of the Company's intention to discontinue service on account of payment delinquency.

- ii. All bills for service are due when rendered and will be considered delinquent if not paid by the due date shown on the bill. If any

Date Filed: October 14, 2016

Effective Date:

Issued By: Tamie A. Aberle
Director of Regulatory Affairs

Case No.:



Montana-Dakota Utilities Co.

A Division of MDU Resources Group, Inc.

400 N 4th Street
Bismarck, ND 58501

State of North Dakota Electric Rate Schedule

NDPSC Volume 4
1st Revised Sheet No. 49.6
Canceling Original Sheet No. 49.6

GENERAL PROVISIONS Rate 100

Page 7 of 9

customer shall become delinquent in the payment of service bills, such service may be discontinued by the Company under the applicable rules of the Commission.

- iii. If a customer's credit standing becomes unsatisfactory after a deposit has been refunded or if the deposit is inadequate to cover the estimated charge for furnishing service for a 60-day period, a new or additional deposit may be required upon reasonable written notice by the Company.
- iv. Pursuant to North Dakota Administrative Rules 69-09-02-05.1(10), the Company may not discontinue service to the Customer for nonpayment of a deposit.
- v. The Company may collect a fee of \$20.00 before restoring electric service which has been discontinued for nonpayment of service bills, or where a Service Extender has been installed in lieu of full disconnection.

9. DISCONTINUANCE OF SERVICE FOR CAUSES OTHER THAN NONPAYMENT OF BILLS:

The Company reserves the right to discontinue service for any of the following reasons:

- i. In the event of customer use of equipment in such a manner as to adversely affect the Company's equipment or service to others.
- ii. In the event of tampering with the equipment furnished and owned by the Company.
- iii. For violation of or noncompliance with the Company's rules on file with the Commission.
- iv. For failure of the customer to fulfill the contractual obligations imposed as conditions of obtaining service.

Date Filed: October 14, 2016

Effective Date:

Issued By: Tamie A. Aberle
Director of Regulatory Affairs

Case No.:



Montana-Dakota Utilities Co.

A Division of MDU Resources Group, Inc.

400 N 4th Street
Bismarck, ND 58501

State of North Dakota Electric Rate Schedule

NDPSC Volume 4
1st Revised Sheet No. 49.7
Canceling Original Sheet No. 49.7

GENERAL PROVISIONS Rate 100

Page 8 of 9

- v. For refusal of reasonable access to property to the agent or employee of the Company for the purpose of inspecting the facilities or for testing, reading, maintaining or removing meters.

The right to discontinue service for any of the above reasons may be exercised whenever and as often as such reasons may occur, and any delay on the part of the Company in exercising such rights, or omission of any action permissible hereunder, shall not be deemed a waiver of its rights to exercise same.

Nothing in these regulations shall be construed to prevent discontinuing service without advance notice for reasons of safety, health, cooperation with civil authorities, or fraudulent use, tampering with or destroying Company facilities.

The Company may collect a reconnect fee of \$20.00 before restoring electric service, which has been disconnected for the above causes.

10. BILL DISCOUNT FOR QUALIFYING EMPLOYEES:

A bill discount may be available for residential use only in a single family unit served by Montana-Dakota Utilities Co. to qualifying employees and retirees of MDU Resources and its subsidiaries. The bill shall be computed at the applicable rate, and the amount reduced by 33 1/3%.

11. METHOD OF COMPUTING INITIAL OR FINAL BILLS FOR ELECTRIC SERVICE FOR LESS THAN A FULL MONTHLY BILLING PERIOD:

Customer's meters are read as nearly as practicable at thirty day intervals. When service is begun or terminated at any location between regular meter reading dates, bills will be prorated on a daily basis, whenever the billing period is less than 27 calendar days or more than 35 calendar days. The minimum monthly bill, basic service charge, kilowatt hour blocks and demand charge provisions in all rate schedules will be prorated.

Date Filed: October 14, 2016

Effective Date:

Issued By: Tamie A. Aberle
Director of Regulatory Affairs

Case No.:



Montana-Dakota Utilities Co.

A Division of MDU Resources Group, Inc.

400 N 4th Street
Bismarck, ND 58501

State of North Dakota Electric Rate Schedule

NDPSC Volume 4
2nd Revised Sheet No. 49.8
Cancelling 1st Revised Sheet No. 49.8

GENERAL PROVISIONS Rate 100

Page 9 of 9

12. SELECTIVE TESTING PLAN FOR METERS:

The electric meter population shall be tested in accordance with the Electric Meter Testing Program approved by the Commission.

13. BILLING ADJUSTMENTS:

If a meter or billing error results from 1) an inaccurate meter; 2) an Incorrect reading of the meter; 3) an incorrect application of a rate schedule; 4) an incorrect connection of the meter; 5) an application of an incorrect multiplier or constant; or 6) other similar errors affecting customer bills.

- i. If a Customer is underbilled, the Company may recalculate the bills and reissue corrected bills for service during the period of the error, up to a maximum period of six years from the date of the bill, with the exception of a meter equipment failure.
- ii. If a Customer is overbilled, the Company shall recalculate bills for errors resulting in overcharges up to a maximum of six years from the date of payment, with the exception of a meter equipment failure. In the case of a meter equipment failure, the Company may charge the Customer for a period equal to one-half the time elapsed since the last previous meter test, but not to exceed six months.

14. MODIFICATION OF RATES, RULES AND REGULATIONS:

Company reserves the right to modify its rates, rules, and regulations or other provisions now or hereafter in effect, in any manner permitted by law.

Date Filed: October 14, 2016

Effective Date:

Issued By: Tamie A. Aberle
Director of Regulatory Affairs

Case No.:



Montana-Dakota Utilities Co.

A Division of MDU Resources Group, Inc.

400 N 4th Street
Bismarck, ND 58501

State of North Dakota Electric Rate Schedule

NDPSC Volume 4
2nd Revised Sheet No. 58.2
Canceling 1st Revised Sheet No. 58.2

TABLE OF CONTENTS ELECTRIC SERVICE RULES AND REGULATIONS Rate 110

Page 3 of 32

			<u>Page No.</u>
Section	400	- SECONDARY VOLTAGE SERVICE (Under 600 Volts)	
	401	Secondary Voltage Service Connections	15
	402	Service Connections and Disconnections	16
	403	Number of Service Drops	16
	404	Services in Raceways	16
	405	Service Entrance Requirements	16
	406	Identification of Conductors	16
	407	Overhead Service Drops	17-18
	408	Secondary Voltage Underground Service	19
	409	Mobile Home Service	19
Section	500	- PRIMARY VOLTAGE SERVICE (2400 Volts or More)	
	501	General	19
	502	Service Entrance Equipment	20
	503	Overcurrent Protection	20
	504	Disconnecting Means	20
	505	Load Balance	20
Section	600	- METERING	
	601	General	20
	602	Meter Installations	21-22
	603	Meter-Switch-Fuse Wiring Sequence	22
	604	Meter Locations	23
	605	Indoor Metering	23
	606	Wiring Diagrams	23
	607	Labeling	23
	608	Seals	24

Date Filed: October 14, 2016

Effective Date:

Issued By: Tamie A. Aberle
Director – Regulatory Affairs

Case No.:



Montana-Dakota Utilities Co.

A Division of MDU Resources Group, Inc.

400 N 4th Street
Bismarck, ND 58501

State of North Dakota Electric Rate Schedule

NDPSC Volume 4

2nd Revised Sheet No. 58.3

Canceling 1st Revised Sheet No. 58.3

TABLE OF CONTENTS

ELECTRIC SERVICE RULES AND REGULATIONS Rate 110

Page 4 of 32

Section	700	- UTILIZATION EQUIPMENT	
	701	Interfering Loads	24
	702	Voltage Flicker and Harmonics	24
	703	Power Factor	24
	704	X-Ray Equipment	25
	705	Electric Welders	25
	706	Electric Motors	25-26
	707	Flashing Display Signs	26
	708	Fluorescent and Gaseous Tub Lighting	26
	709	Electric Heat Equipment	26
	710	Computers and Electronic Equipment	26
	711	Carrier Equipment	26

Date Filed: October 14, 2016

Effective Date:

Issued By: Tamie A. Aberle
Director – Regulatory Affairs

Case No.:



Montana-Dakota Utilities Co.

A Division of MDU Resources Group, Inc.

400 N 4th Street
Bismarck, ND 58501

State of North Dakota Electric Rate Schedule

NDPSC Volume 4
2nd Revised Sheet No. 58.4
Canceling 1st Revised Sheet No. 58.4

TABLE OF CONTENTS ELECTRIC SERVICE RULES AND REGULATIONS Rate 110

Page 5 of 32

Page No.

ILLUSTRATIONS

Figure 1 - Typical Service Attachment	27
Figure 2 - Transformer Rated Metering, Padmount Transformer	28
Figure 3 - Transformer Rated Metering, Overhead or Underground Service	29
Figure 4 - Polyphase Self Contained Meter Connections	30
Figure 5 - Typical Padmount Equipment Installation	31
Figure 6 - Typical Transition Cabinet Installation	32

Date Filed: October 14, 2016

Effective Date:

Issued By: Tamie A. Aberle
Director – Regulatory Affairs

Case No.:



Montana-Dakota Utilities Co.

A Division of MDU Resources Group, Inc.

400 N 4th Street
Bismarck, ND 58501

State of North Dakota Electric Rate Schedule

NDPSC Volume 4

2nd Revised Sheet No. 58.7

Canceling 1st Revised Sheet No. 58.7

ELECTRIC SERVICE RULES AND REGULATIONS Rate 110

Page 8 of 32

104.2 Customer's Equipment – Neither by inspection or rejection, nor in any other way does the Company give any warranty, expressed or implied, as to the adequacy, safety or other characteristics of any structures, equipment, lines, appliances or devices owned, installed or maintained by the customer, leased by the customer from third parties or used on the customer's premise. It is the obligation of the customer to consult with the Company regarding available maximum fault current and to provide such protection devices as may be necessary to safeguard the equipment and installation from interruptions, variation in voltage and frequency, single-phase energization of three-phase lines, reversal of phase rotation or other abnormal conditions. (Refer to Paragraph 710)

104.3 Company Equipment and Use of Service – The Company will not be liable for any loss, injury, death or damage resulting in any way from the supply or use of electricity or from the presence or operation of the Company's structures, equipment, lines, appliances or devices on the customer's premises, except loss, injuries, death, or damages resulting from the negligence of the Company.

104.4 Indemnification – Customer agrees to indemnify and hold Company harmless from any and all injury, death, loss or damage resulting from customer's negligent or wrongful acts under and during the term of service. Company agrees to indemnify and hold customer harmless from any and all injury, death, loss or damage resulting from Company's negligent or wrongful acts under and during the term of service.

104.5 Force Majeure – In the event of either party being rendered wholly or in part by force majeure unable to carry out its obligations, then the obligations of the parties hereto, so far as they are affected by such force majeure, shall be suspended during the continuance of any inability so caused. Such causes or contingencies affecting the performance by either party, however, shall not relieve it of liability in the event of its concurring negligence or in the event of its failure to use due diligence to remedy the situation and remove the cause in an adequate manner and with all reasonable dispatch, nor shall such causes or contingencies affecting the performance relieve either party from its obligations to make payments of amounts then due hereunder, nor shall such causes or contingencies relieve either party of liability unless such party shall give notice and full particulars of the same in writing or by telephone to the other party as soon as possible after the occurrence relied on.

Date Filed: October 14, 2016

Effective Date:

Issued By: Tamie A. Aberle
Director – Regulatory Affairs

Case No.:



Montana-Dakota Utilities Co.

A Division of MDU Resources Group, Inc.

400 N 4th Street
Bismarck, ND 58501

State of North Dakota Electric Rate Schedule

NDPSC Volume 4

3rd Revised Sheet No. 58.20

Canceling 2nd Revised Sheet No. 58.20

ELECTRIC SERVICE RULES AND REGULATIONS Rate 110

Page 21 of 32

602. Meter Installations

602.1 The Company will furnish all meters required for billing purposes.

It shall be the customer's responsibility to furnish, install and maintain the meter mounting device. Company approved specifications for electric meter sockets and metering transformer enclosures are listed below:

Self-Contained Meter Sockets – Single-Phase, Three-Phase and Multiple Position Type

1. The customer will utilize meter sockets from a Company approved list of manufacturer and models as posted on the Company's website.
2. U.L. approved, ringless style.
3. 100 ampere minimum for overhead service installations.
4. 150 ampere minimum for underground service installations.
5. Stud connectors are required for all sockets rated 320 amps or greater.
6. For sockets rated below 320 amps, study connectors are recommended. Only Company specified meter sockets are approved with lay-in connectors.
7. Equipped with a fifth terminal in the nine o'clock position where network metering is required.
8. A lever by-pass feature is required for all commercial and industrial installations. Upon review by Company, an exemption may be provided.
9. A lever by-pass feature is recommended for all residential installations.

Metering Transformer Rated Meter Socket

1. U.L. approved, ringless style with a one piece cover.
2. Minimum size must provide space for test switch installation.
3. Socket must have six terminals for single phase and 13 terminals for all other configurations.
4. Automatic by-pass feature is not acceptable.
5. The customer will utilize instrument rated meter sockets from a Company approved list of manufacturer and models.

Metering Transformer Enclosure (Secondary Service)

1. Recommend a durable, weather-resistant finish and weatherproof seal.
2. Must be provided with hinge-type cover and provisions to attach locking or sealing device.
3. Minimum size 10" x 24" x 30" with suitable mounting brackets for current and voltage transformers.

Date Filed: October 14, 2016

Effective Date:

Issued By: Tamie A. Aberle
Director – Regulatory Affairs

Case No.:



Montana-Dakota Utilities Co.

A Division of MDU Resources Group, Inc.

400 N 4th Street
Bismarck, ND 58501

State of North Dakota Electric Rate Schedule

NDPSC Volume 4

2nd Revised Sheet No. 58.21

Canceling 1st Revised Sheet No. 58.21

ELECTRIC SERVICE RULES AND REGULATIONS Rate 110

Page 22 of 32

4. Consult with Company prior to purchasing any metering transformer enclosure.

602.2 Self-contained rated meter sockets shall, be placed outdoors.

602.3 On instrument rated meter sockets , the Company will furnish and install the metering transformers. Such meter sockets shall be arranged for outdoor metering. (Refer to Figures 2 and 3.)

602.4 Where a secondary metering transformer enclosure is required, the customer shall furnish and install an enclosure. Such enclosures shall contain only the service entrance conductors and metering transformers. The metering transformers shall be installed on the line side of the customer's disconnecting device. Suitable lugs, connectors, etc. for connecting metering transformers to service mains shall be provided by the customer. (Refer to Paragraph 602.1)

602.5 For installations having switchboards, the metering transformers may be mounted in the switchboard bus, provided they are accessible for changing and testing. Metering transformers shall be mounted on the source side of the main switch.

602.6 Meters and test switches may be mounted on a suitable unhinged panel adjacent to the metering transformer enclosure.

602.7 No device other than a Company-owned or Company-approved device shall be placed into the meter socket.

603. Meter-Switch-Fuse Wiring Sequence

For all secondary voltage metering installations the meter, entrance switch and main line fuse or breaker shall be installed in the order named with respect to power flow. All circuits downstream from the meter shall have proper overcurrent protection devices. A customer-owned main service switch shall be installed on the source side of all 480 volt, self-contained meters. This switch shall be located no closer than three feet either left or right of the meter socket, and the switch cover is sealed by Company.

Date Filed: October 14, 2016

Effective Date:

Issued By: Tamie A. Aberle
Director – Regulatory Affairs
October 14, 2016

Case No.:



Montana-Dakota Utilities Co.

A Division of MDU Resources Group, Inc.

400 N 4th Street
Bismarck, ND 58501

State of North Dakota Electric Rate Schedule

NDPSC Volume 4

2nd Revised Sheet No. 58.22

Canceling 1st Revised Sheet No. 58.22

ELECTRIC SERVICE RULES AND REGULATIONS Rate 110

Page 23 of 32

604. Meter Locations

604.1 Each meter shall be located outdoors in a place of convenient access where it will not create a hazard. The location shall be agreed upon by the customer's representative and the Company. (Refer to Figure 1.)

604.2 Meters shall be located so that there is not less than 3 feet of unobstructed space, from the ground up, in front of the meter so that the center line of the meter is not less than 4 feet nor more than 5 feet above the floor, ground, or permanent platform from which the reading will be taken. On group installations, the minimum height is 2 feet - 6 inches and the maximum is 6 feet. The minimum center spacing between meter sockets shall be 7 ½ inches horizontally and 8 ½ inches vertically.

604.3 Meter Sockets shall be permanently mounted on secure structures such as houses, buildings, poles, etc. All required conduit will be provided by customer. (Refer to Figures 1, 2, and 3.)

604.4 Enclosures shall not be placed over the meter socket unless approved by the Company.

605. Indoor Metering

Meters shall be located outdoors as noted in Paragraph 604.1. However, depending on the circumstance and after consulting with the Company, locating the meters indoors may be approved on a case by case basis. Where approved, Indoor meters for multiple dwellings, large office buildings, etc. shall be grouped and located as near the service entrance location as practicable. In the event such location renders the automatic meter reading equipment ineffective customer will be responsible for costs associated with remedying the situation.

606. Wiring Diagrams

Typical wiring diagrams for various types of self-contained meters are shown on Figure 4. These are subject to change from time to time with advancement in available metering equipment.

607. Labeling

Where two or more meter mounting devices are installed at one location, each shall be labeled so that it may be identified as to the customer served. Electrical contractors are requested and cautioned to check and identify wiring circuits carefully to avoid metering

Date Filed: October 14, 2016

Effective Date:

Issued By: Tamie A. Aberle
Director – Regulatory Affairs

Case No.:



Montana-Dakota Utilities Co.

A Division of MDU Resources Group, Inc.

400 N 4th Street
Bismarck, ND 58501

State of North Dakota Electric Rate Schedule

NDPSC Volume 4

2nd Revised Sheet No. 58.23

Canceling 1st Revised Sheet No. 58.23

ELECTRIC SERVICE RULES AND REGULATIONS Rate 110

Page 24 of 32

errors due to incorrect circuitry. Permanent (mechanically fastened) engraved plates shall be placed on the exterior of the meter base on a non-removable panel.

608. Seals

All meters and all points of access to customer wiring on the source side of the meter will be sealed by the Company. All cabinets and switch boxes, either inside or outside of the building which contain un-metered wires, shall have provisions made for sealing before service will be supplied.

Section 700 - UTILIZATION EQUIPMENT

701. Interfering Loads

Whenever a customer's utilization equipment has characteristics which cause undue interference with the Company's service to other customers, the customer shall provide, at customer's expense, the necessary equipment to prevent or eliminate such interference. The Company may install and maintain at the customer's expense the necessary equipment to eliminate such interference if it deems it advisable. When a customer's equipment or method of operation causes such interference and the customer does not correct the condition after being so requested by the Company, the Company reserves the right to discontinue the electric service, following written notification of its intent to do so; and service will not be re-established until the conditions complained of have been corrected.

702. Voltage Flicker and Harmonics

702.1 The Company uses the latest revision of the IEEE Standard 141 as the guideline for the maximum allowable voltage flicker that can be caused by a customer's load as measured at the point of metering. This guideline refers to the momentary dip in voltage that may result from the customer's operation of switches, starting of motors, etc.

702.2 Customer's electric load shall comply with the recommendations within Section 10 of the latest revision of the IEEE Standard 519 "Recommended Practices & Requirements for Harmonic Control in Electric Power Systems" at the point of metering connection.

703. Power Factor

Whenever the customer's utilization equipment is of such characteristics as to produce a low power factor, the Company reserves the right to require the customer to raise such power factor, at the customer's expense, or to pay additional charges as provided in

Date Filed: October 14, 2016

Effective Date:

Issued By: Tamie A. Aberle
Director – Regulatory Affairs

Case No.:



Montana-Dakota Utilities Co.

A Division of MDU Resources Group, Inc.

400 N 4th Street
Bismarck, ND 58501

State of North Dakota Electric Rate Schedule

NDPSC Volume 4

2nd Revised Sheet No. 58.24

Canceling 1st Revised Sheet No. 58.24

ELECTRIC SERVICE RULES AND REGULATIONS Rate 110

Page 25 of 32

certain of the Company's rates on file with the Regulatory Commission of the state wherein the customer is located.

704. X-Ray Equipment

At the option of the Company, x-ray equipment may be separately metered and/or supplied from separate transformers.

705. Electric Welders

Electric welding apparatus shall require special arrangements with the Company to determine its ability to serve before installation is made. (Refer to Paragraph 703)

706. Electric Motors

706.1 Motors are normally designed to operate at their rated voltage, plus or minus 10%; thus a 220 volt motor should operate satisfactorily at 208 volts or 240 volts.

706.2 To assure adequate safety to personnel and equipment, the customer shall provide and maintain protective devices in each phase to protect all motors against overloading, short circuits, ground faults and low voltage, and to protect all three-phase motors against single-phasing and phase reversal.

706.3 Motors for use at 120 volts single-phase are limited to locked rotor currents of 25 amperes if started more than 4 times per hour, and 50 amperes if started less frequently.

Motors for use at 208 or 240 volts single-phase will generally be limited to 3 h.p. and a maximum of 4 starts per hour. The Company must be consulted for single-phase motors above 3 h.p. Compensating starting equipment may be required to limit the starting current and when required, shall be furnished by the customer. (Refer to paragraph 702)

706.4 The size of three-phase motors permitted will depend upon the effect starting the motor has upon the customer's system and the Company's other customers in the area. This effect will depend upon the magnitude of the starting current and the frequency of starting. (Refer to Paragraph 702)

When necessary, the customer will be required to reduce the amount of starting current to an acceptable level by installing suitable motor-starting equipment or by using motors designed for smaller starting currents.

Date Filed: October 14, 2016

Effective Date:

Issued By: Tamie A. Aberle
Director – Regulatory Affairs

Case No.:



Montana-Dakota Utilities Co.

A Division of MDU Resources Group, Inc.

400 N 4th Street
Bismarck, ND 58501

State of North Dakota Electric Rate Schedule

NDPSC Volume 4

2nd Revised Sheet No. 58.25

Canceling 1st Revised Sheet No. 58.25

ELECTRIC SERVICE RULES AND REGULATIONS Rate 110

Page 26 of 32

706.5 When more than one motor can start simultaneously, the sum of the maximum starting currents of those motors starting simultaneously and also the sum of their horsepower rating shall be furnished to the Company to determine when reduced voltage starting may be required.

707. Flashing Display Signs

The Company reserves the right to refuse service for "flashing" display signs or display lighting where such service would interfere with voltage regulation of the secondary system.

708. Fluorescent and Gaseous Tube Lighting

High power factor ballasts or transformers must be used for fluorescent, sodium vapor, neon or other gaseous tube lighting equipment. It is required that such equipment operate at a power factor of not less than 90% lagging.

709. Electric Heat Equipment

A customer planning to install resistance type heating, heat pump, electric furnace, electrode boiler, etc. shall consult with the Company, before purchasing the equipment, so that operational modes of this equipment are determined to be acceptable for connection to the Company's distribution system. It is important that consultation is obtained prior to installation of this equipment so the Company can provide adequate capacity to efficiently serve the customer's requirements.

710. Computers and Electronic Equipment

Computers and other sensitive electronic equipment which require high grade, uninterrupted power may, on occasion, experience problems when connected directly to the Company's distribution system. The customer should contact their equipment supplier or consultant to ascertain the need for lightning arresters, surge suppressors, isolation transformers, and standby or uninterruptible power supplies. (Refer to Paragraph 104.2.)

711. Carrier Equipment

The customer shall not impose, or cause to be imposed, any electric signal of any frequency or magnitude upon the Company's distribution system.

Date Filed: October 14, 2016

Effective Date:

Issued By: Tamie A. Aberle
Director – Regulatory Affairs

Case No.:



Montana-Dakota Utilities Co.

A Division of MDU Resources Group, Inc.

400 N 4th Street
Bismarck, ND 58501

State of North Dakota Electric Rate Schedule

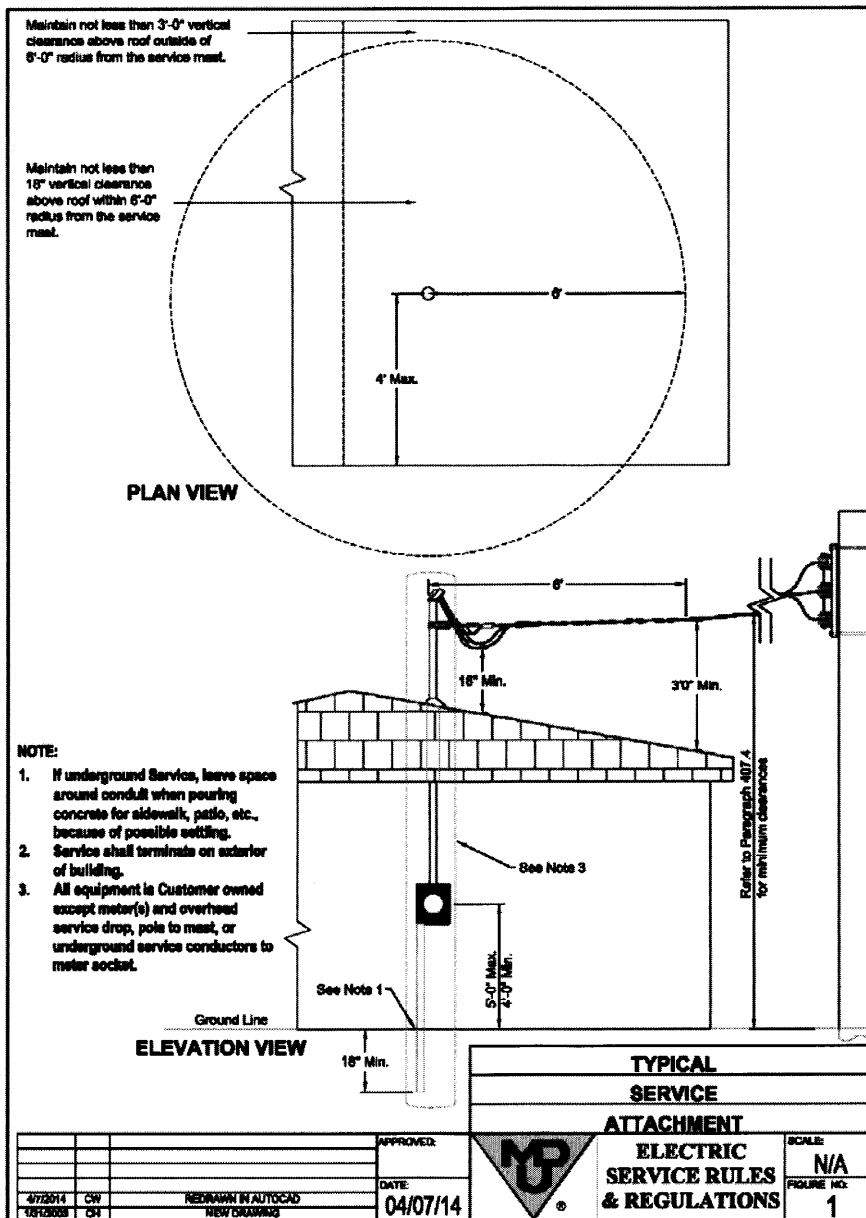
NDPSC Volume 4

2nd Revised Sheet No. 58.26

Canceling 1st Revised Sheet No. 58.26

ELECTRIC SERVICE RULES AND REGULATIONS Rate 110

Page 27 of 32



Date Filed: October 14, 2016

Effective Date:

Issued By: Tamie A. Aberle
Director – Regulatory Affairs

Case No.:



Montana-Dakota Utilities Co.

A Division of MDU Resources Group, Inc.

400 N 4th Street
Bismarck, ND 58501

State of North Dakota Electric Rate Schedule

NDPSC Volume 4

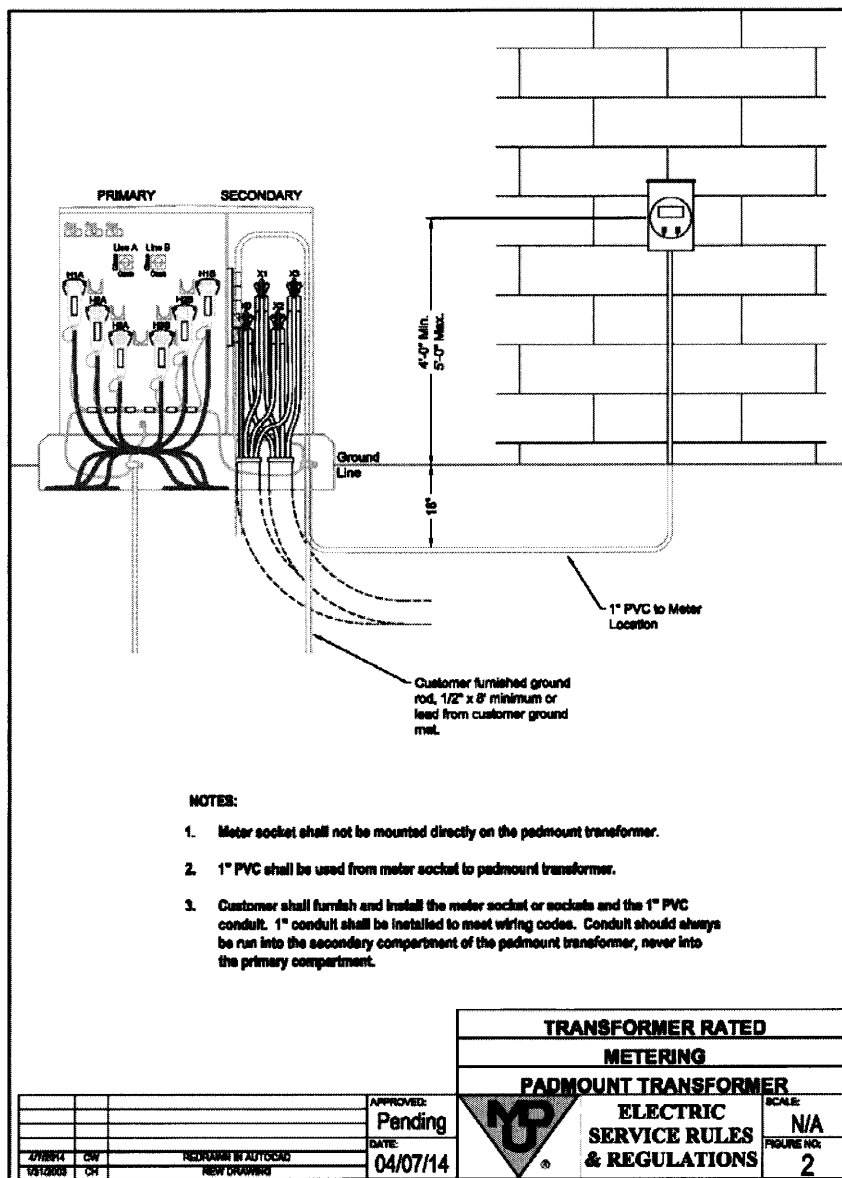
2nd Revised Sheet No. 58.27

Canceling 1st Revised Sheet No. 58.27

TABLE OF CONTENTS

ELECTRIC SERVICE RULES AND REGULATIONS Rate 110

Page 28 of 32



Date Filed: October 14, 2016

Effective Date:

Issued By: Tamie A. Aberle
Director – Regulatory Affairs

Case No.:



Montana-Dakota Utilities Co.

A Division of MDU Resources Group, Inc.

400 N 4th Street
Bismarck, ND 58501

State of North Dakota Electric Rate Schedule

NDPSC Volume 4

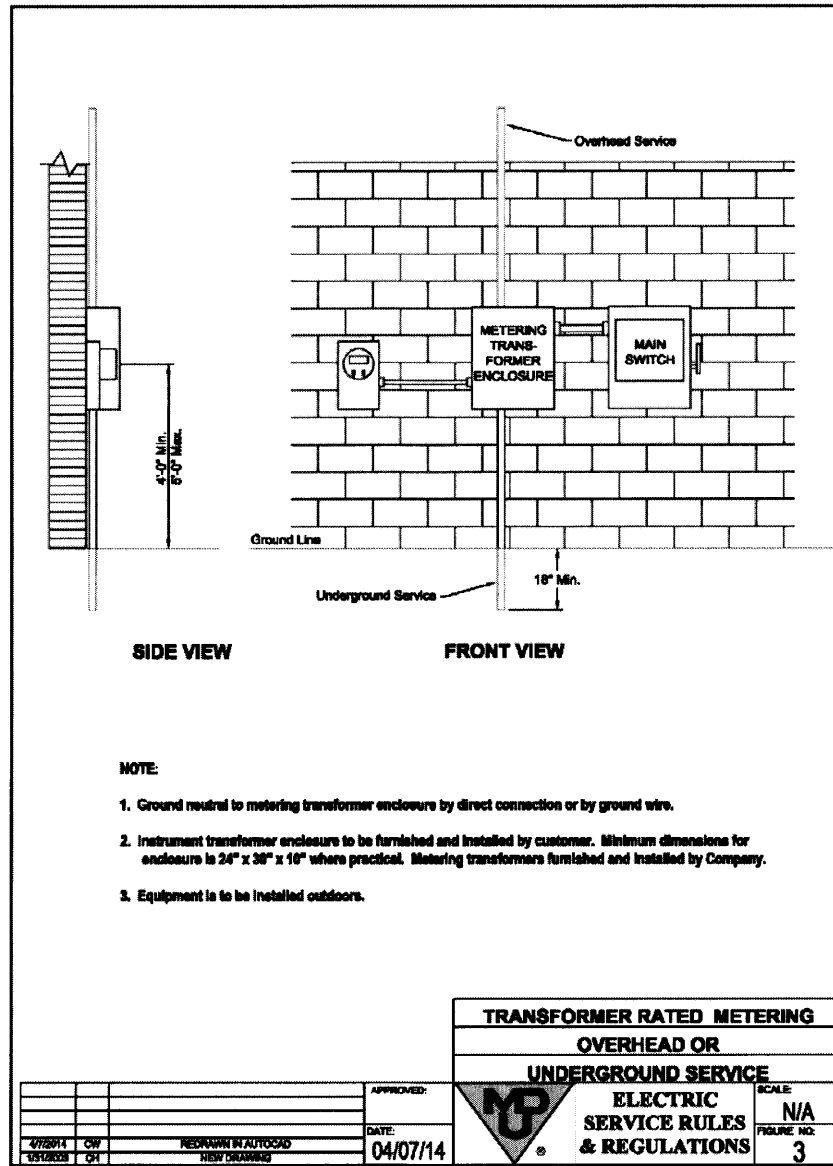
2nd Revised Sheet No. 58.28

Canceling 1st Revised Sheet No. 58.28

TABLE OF CONTENTS

ELECTRIC SERVICE RULES AND REGULATIONS Rate 110

Page 29 of 32



Date Filed: October 14, 2016

Effective Date:

Issued By: Tamie A. Aberle
Director – Regulatory Affairs

Case No.:



Montana-Dakota Utilities Co.

A Division of MDU Resources Group, Inc.

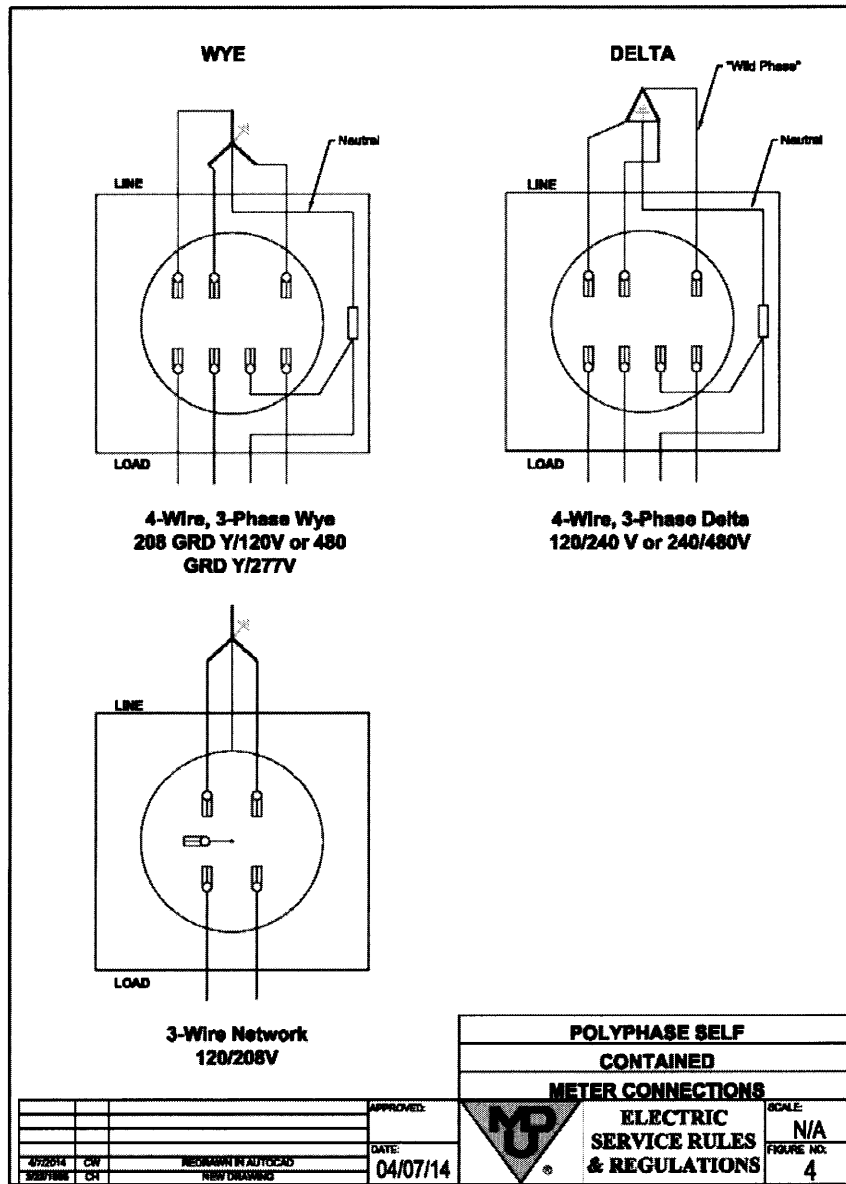
400 N 4th Street
Bismarck, ND 58501

State of North Dakota Electric Rate Schedule

NDPSC Volume 4
2nd Revised Sheet No. 58.29
Canceling 1st Revised Sheet No. 58.29

TABLE OF CONTENTS ELECTRIC SERVICE RULES AND REGULATIONS Rate 110

Page 30 of 32



Date Filed: October 14, 2016

Effective Date:

Issued By: Tamie A. Aberle
Director – Regulatory Affairs

Case No.:



Montana-Dakota Utilities Co.

A Division of MDU Resources Group, Inc.

400 N 4th Street
Bismarck, ND 58501

State of North Dakota Electric Rate Schedule

NDPSC Volume 4

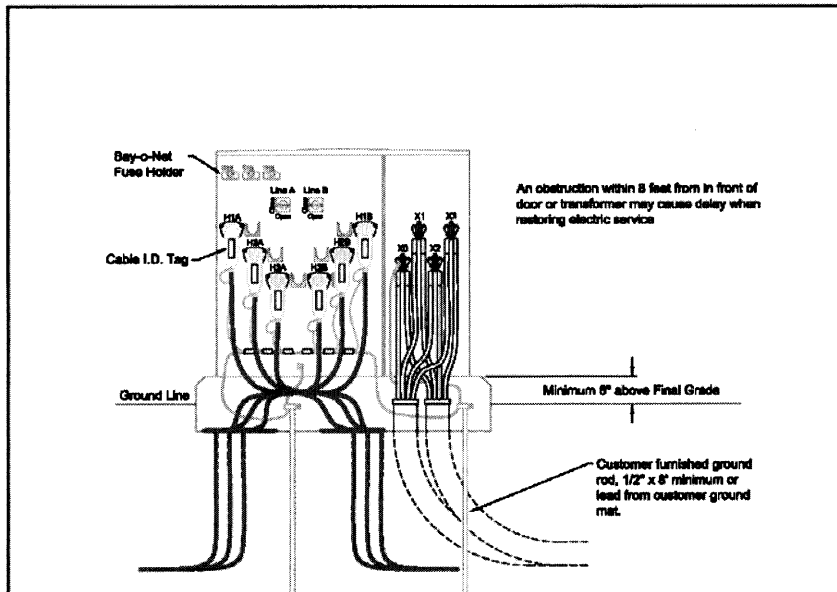
2nd Revised Sheet No. 58.30

Canceling 1st Revised Sheet No. 58.30

TABLE OF CONTENTS

ELECTRIC SERVICE RULES AND REGULATIONS Rate 110

Page 31 of 32



NOTES:

1. Consult with Company for actual equipment pad dimensions.
2. Transformer pad, service cable, conduit and ground rod or mat for service cable grounding are furnished by Customer.
3. Allow sufficient slack in service entrance conductor to allow for proper connection to equipment terminals.
4. Service connectors to be furnished by Company.
5. Connection to Company's equipment terminals to be made by Company.
6. When more than four conductors are installed for each phase, consult Company for transition cabinet requirements.

TRANSFORMER LOCATION

1. Entire pad must be five feet from any building.
2. All oil-filled padmounted transformers must be installed so any flow of oil resulting from a failure of the transformer will flow away from any structure.
3. A transformer should be located away from traffic areas or protected with ballards such as concrete filled pipes or steel bumper posts, provided by the customer.
4. When locating pad, consider overhead clearance for possible transformer replacement.
5. Compact soil to avoid tilting and settling. Columns required except on undisturbed soil.

TYPICAL PADMOUNT EQUIPMENT INSTALLATION			
ELECTRIC SERVICE RULES & REGULATIONS		SCALE: N/A	FIGURE NO.: 5
APPROVED: Pending	DATE: 04/07/14		
2/19/04 06/28/09	CMF CH	DESIGNED BY: ALTYCZAK REVISED BY: NEW DRAWING	

Date Filed: October 14, 2016

Effective Date:

Issued By: Tamie A. Aberle
Director – Regulatory Affairs

Case No.:



Montana-Dakota Utilities Co.

A Division of MDU Resources Group, Inc.

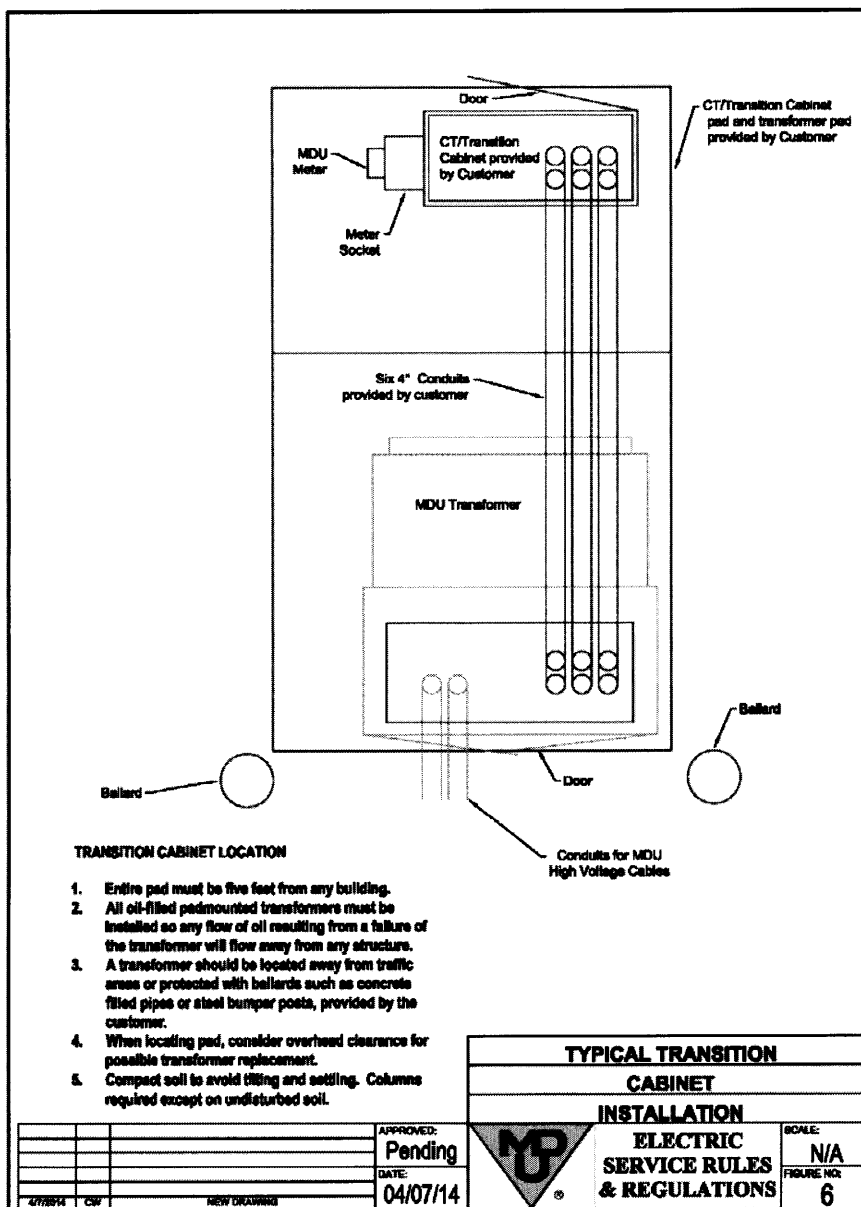
400 N 4th Street
Bismarck, ND 58501

State of North Dakota Electric Rate Schedule

NDPSC Volume 4
Original Sheet No. 58.31

TABLE OF CONTENTS ELECTRIC SERVICE RULES AND REGULATIONS Rate 110

Page 32 of 32



Date Filed: October 14, 2016

Effective Date:

Issued By: Tamie A. Aberle
Director – Regulatory Affairs

Case No.:

Tariffs Reflecting Proposed Changes



Montana-Dakota Utilities Co.

A Division of MDU Resources Group, Inc.

400 N 4th Street
Bismarck, ND 58501

State of North Dakota Electric Rate Schedule

NDPSC Volume 4
6th Revised Sheet No. 3
Canceling 5th Revised Sheet No. 3

RESIDENTIAL ELECTRIC SERVICE Rate 10

Page 1 of 1

Availability:

In all communities served for single-phase residential electric service for domestic purposes only.

Rate:

Basic Service Charge:	\$0.635 per day
Energy Charge:	
October – May:	
First 750 Kwh per month	5.3046.066¢ per Kwh
Over 750 Kwh per month	2.3043.066¢ per Kwh
June – September:	5.3046.066¢ per Kwh
Base Fuel and Purchased Power:	2.0872.536¢ per Kwh

Minimum Bill:

Basic Service Charge.

Payment:

Bills will be considered past due if not paid by the due date shown on the bill. Past due bills are subject to a late payment charge in accordance with the provisions of Rate 100 or any amendments or alterations thereto.

Adjustment Clauses:

Bills are subject to the following adjustments or any amendments or alterations thereto:

1. Renewable Resource Cost Adjustment Rate 55
2. Generation Resource Recovery Rider Rate 56
3. Environmental Cost Recovery Rider Rate 57
4. Fuel and Purchased Power Adjustment Rate 58
5. Transmission Cost Adjustment Rate 59

General Terms and Conditions:

The foregoing schedule is subject to Rates 100-112 and any amendments or alterations thereto or additional rules and regulations promulgated by the Company under the laws of the state.

Date Filed: October 21, 2015

Effective Date: Service rendered on and after January 7, 2016

Issued By: Tamie A. Aberle
Director - Regulatory Affairs

Case No.: PU-15-703



Montana-Dakota Utilities Co.

A Division of MDU Resources Group, Inc.

400 N 4th Street
Bismarck, ND 58501

State of North Dakota Electric Rate Schedule

NDPSC Volume 4
Original Sheet No. 4

OPTIONAL RESIDENTIAL ELECTRIC THERMAL ENERGY STORAGE SERVICE Rate 13

Page 1 of 2

Availability:

In all communities served for single-phase residential electric for customers operating Company approved thermal energy storage facilities for the purpose of utilizing off-peak electric energy for space conditioning purposes where electric space heating is the primary heating source. Service under this rate is not available when another energy source provided by the Company is utilized as a back-up heating source.

Rate:

Basic Service Charge: \$0.450.75 per day

Off-Peak Energy Charge:

For all energy used during the designated hours of 10:00 p.m. to 8:00 a.m. local time.

October – May: 0.8041.100¢ per Kwh

On-Peak Energy Charge:

For all energy not covered by the Off-Peak rating period.

October – May:

First 750 Kwh per month 5.3047.845¢ per Kwh

Over 750 Kwh per month 2.3044.845¢ per Kwh

June – September: 5.3047.845¢ per Kwh

Base Fuel and Purchased Power: 2.0872.536¢ per Kwh

Minimum Bill:

Basic Service Charge.

Payment:

Bills will be considered past due if not paid by the due date shown on the bill. Past due bills are subject to a late payment charge in accordance with the provisions of Rate 100 or any amendments or alterations thereto.

Date Filed: June 14, 2011

Effective Date: Service rendered on and after July 22, 2011

Issued By: Tamie A. Aberle
Regulatory Affairs Manager

Case No.: PU-10-124



Montana-Dakota Utilities Co.

A Division of MDU Resources Group, Inc.

400 N 4th Street
Bismarck, ND 58501

State of North Dakota Electric Rate Schedule

NDPSC Volume 4
8th Revised Sheet No. 7
Canceling 7th Revised Sheet No. 7

OPTIONAL TIME-OF-DAY RESIDENTIAL ELECTRIC SERVICE Rate 16

Page 1 of 3

Availability:

In all communities served for single-phase residential electric service. The customer's wiring must be so arranged that all service can be measured through one meter.

Rate:

Basic Service Charge: \$0.745 per day

On-Peak Energy:

For all Kwh's used during peak hours designated as 12 p.m. to 8 p.m. local time, Monday through Friday.

October – May 7.3986.711¢ per Kwh

June – September 10.3988.211¢ per Kwh

Off-Peak Energy:

For all energy not covered by the On-Peak rating period. 2.304¢ per Kwh

October – May 3.711¢ per Kwh

June – September 5.211¢ per Kwh

Base Fuel and Purchased Power: 2.0872.536¢ per Kwh

Minimum Bill:

Basic Service Charge.

Payment:

Bills will be considered past due if not paid by the due date shown on the bill. Past due bills are subject to a late payment charge in accordance with the provisions of Rate 100 or any amendments or alterations thereto.

Adjustment Clauses:

Bills are subject to the following adjustments or any amendments or alterations thereto:

1. Renewable Resource Cost Adjustment Rate 55
2. Generation Resource Recovery Rider Rate 56

Date Filed: October 21, 2015

Effective Date: Service rendered on and after January 7, 2016

Issued By: Tamie A. Aberle
Director - Regulatory Affairs

Case No.: PU-15-703



Montana-Dakota Utilities Co.

A Division of MDU Resources Group, Inc.

400 N 4th Street
Bismarck, ND 58501

State of North Dakota Electric Rate Schedule

NDPSC Volume 4
8th Revised Sheet No. 7
Canceling 7th Revised Sheet No. 7

OPTIONAL TIME-OF-DAY RESIDENTIAL ELECTRIC SERVICE Rate 16

Page 2 of 3

3. Environmental Cost Recovery Rider Rate 57

Date Filed: October 21, 2015

Effective Date: Service rendered on and
after January 7, 2016

Issued By: Tamie A. Aberle
Director - Regulatory Affairs

Case No.: PU-15-703



Montana-Dakota Utilities Co.

A Division of MDU Resources Group, Inc.

400 N 4th Street
Bismarck, ND 58501

State of North Dakota Electric Rate Schedule

NDPSC Volume 4
6th Revised Sheet No. 10
Canceling 5th Revised Sheet No. 10

SMALL GENERAL ELECTRIC SERVICE Rate 20

Page 1 of 2

Availability:

In all communities served for all types of general electric service with billing demands that do not warrant the installation of a demand meter except outside lighting, standby, resale or other customers covered by special contracts or rate schedules applicable to specific services. The customer's wiring must be so arranged so that all service can be measured through one meter. If the customer does not connect his wiring into a single system, each meter shall constitute a separate billing unit.

Rate:

Basic Service Charge:	\$0. 8470 per day
Energy Charge:	
October – May:	
First 750 Kwh per month	6.1477.212¢ per Kwh
Over 750 Kwh per month	2.3044.212¢ per Kwh
June – September:	6.1477.212¢ per Kwh
Base Fuel and Purchased Power:	2.0872.536¢ per Kwh

Minimum Bill:

Basic Service Charge.

Payment:

Bills will be considered past due if not paid by the due date shown on the bill. Past due bills are subject to a late payment charge in accordance with the provisions of Rate 100 or any amendments or alterations thereto.

Adjustment Clauses:

Bills are subject to the following adjustments or any amendments or alterations thereto:

1. Renewable Resource Cost Adjustment Rate 55
2. Generation Resource Recovery Rider Rate 56
3. Environmental Cost Recovery Rider Rate 57
4. Fuel and Purchased Power Adjustment Rate 58
5. Transmission Cost Adjustment Rate 59

Date Filed: October 21, 2015

Effective Date: Service rendered on and
after January 7, 2016

Issued By: Tamie A. Aberle
Director - Regulatory Affairs

Case No.: PU-15-703



Montana-Dakota Utilities Co.

A Division of MDU Resources Group, Inc.

400 N 4th Street
Bismarck, ND 58501

State of North Dakota Electric Rate Schedule

NDPSC Volume 4
2nd Revised Sheet No. 14
Canceling 1st Revised Sheet No. 14

IRRIGATION POWER SERVICE Rate 25

Page 1 of 2

Availability:

For irrigation power service.

Rate:

Basic Service Charge:	\$0.65 <u>1.50</u> per day
Demand Charge:	
October – May	\$1.25 per Kw
June – September	\$2.75 <u>5.00</u> per Kw
Energy Charge:	1.20 <u>90.782</u> ¢ per Kwh
Base Fuel and Purchased Power:	2.08 <u>72.536</u> ¢ per Kwh

Minimum Bill:

Basic Service Charge.

Payment:

Bills will be considered past due if not paid by the due date shown on the bill. Past due bills are subject to a late payment charge in accordance with the provisions of Rate 100 or any amendments or alterations thereto.

Power Factor Clause:

The Company reserves the right to require the customer to install adequate equipment so that at all times it can operate its facilities to maintain a power factor between 90% lagging and 90% leading. If the customer operates outside this range, the maximum 15 minute integrated reactive kilovolt amperes in excess of 50% of the maximum 15 minute integrated kilowatt demand for the same month will be billed at \$3.35 per Kvar of such excess demand.

Determination of Billing Demand:

The demand in kilowatts for billing purposes shall be the maximum 15 minute measured demand in the current month. Demands will be determined to the nearest one-tenth kilowatt. Customers whose loads have rapidly fluctuating and/or intermittent demand characteristics shall be subject to special rules and regulations.

Date Filed: June 14, 2011

Effective Date: Service rendered on and after July 22, 2011

Issued By: Tamie A. Aberle
Regulatory Affairs Manager

Case No.: PU-10-124



Montana-Dakota Utilities Co.

A Division of MDU Resources Group, Inc.

400 N 4th Street
Bismarck, ND 58501

State of North Dakota Electric Rate Schedule

NDPSC Volume 4
8th Revised Sheet No. 15
Canceling 7th Revised Sheet No. 15

OPTIONAL TIME-OF-DAY SMALL GENERAL ELECTRIC SERVICE Rate 26

Page 1 of 3

Availability:

In all communities served for all types of general electric service with billing demands that do not warrant the installation of a demand meter except outside lighting, standby, resale, or other customers covered by special contracts or rate schedules applicable to specific services. The customer's wiring must be arranged so that all service can be measured through one meter.

Rate:

Basic Service Charge: ~~\$0.80~~ 1.00 per day

On-Peak Energy:

For all Kwh's used during peak hours designated as 12 p.m. to 8 p.m. local time, Monday through Friday.

October – May 7.3855.970¢ per Kwh
June – September 11.3857.470¢ per Kwh

Off-Peak Energy:

For all energy not covered by the On-Peak rating period.

2.304¢ per Kwh
October – May 3.470¢ per Kwh
June – September 4.970¢ per Kwh

Base Fuel and Purchased Power: 2.0872.536¢ per Kwh

Minimum Bill:

Basic Service Charge.

Payment:

Bills will be considered past due if not paid by the due date shown on the bill. Past due bills are subject to a late payment charge in accordance with the provisions of Rate 100 or any amendments or alterations thereto.

Adjustment Clauses:

Bills are subject to the following adjustments or any amendments or alterations thereto:

1. Renewable Resource Cost Adjustment Rate 55
2. Generation Resource Recovery Rider Rate 56

Date Filed: October 21, 2015

Effective Date: Service rendered on and after January 7, 2016

Issued By: Tamie A. Aberle
Director - Regulatory Affairs

Case No.: PU-15-703



Montana-Dakota Utilities Co.

A Division of MDU Resources Group, Inc.

400 N 4th Street
Bismarck, ND 58501

State of North Dakota Electric Rate Schedule

NDPSC Volume 4
8th Revised Sheet No. 15
Canceling 7th Revised Sheet No. 15

OPTIONAL TIME-OF-DAY SMALL GENERAL ELECTRIC SERVICE Rate 26

Page 2 of 3

3. Environmental Cost Recovery Rider Rate 57

Date Filed: October 21, 2015

Effective Date: Service rendered on and
after January 7, 2016

Issued By: Tamie A. Aberle
Director - Regulatory Affairs

Case No.: PU-15-703



Montana-Dakota Utilities Co.

A Division of MDU Resources Group, Inc.

400 N 4th Street
Bismarck, ND 58501

State of North Dakota Electric Rate Schedule

NDPSC Volume 4
2nd Revised Sheet No. 18
Canceling 1st Revised Sheet No. 18

GENERAL ELECTRIC SERVICE Rate 30

Page 1 of 2

Availability:

In all communities served for all types of demand metered general electric service except outside lighting, standby, resale or other customers covered by special contracts or rate schedules applicable to specific services. The customer's wiring must be arranged so that all service can be measured through one meter. If the customer does not connect his wiring into a single system, each meter shall constitute a separate billing unit.

Rate:

Primary Service:

Basic Service Charge: ~~\$95.00~~100.00 per month

Demand Charge:

October – May ~~\$6.25~~11.00 per Kw

June – September ~~\$9.25~~14.00 per Kw

Energy Charge:

~~2.29~~62.110¢ per Kwh

Base Fuel and Purchased Power:

~~2.02~~42.454¢ per Kwh

Secondary Service:

Basic Service Charge: ~~\$45.00~~56.00 per month

Demand Charge:

October – May ~~\$ 8.25~~9.50 per Kw

June – September ~~\$11.25~~12.50 per Kw

Energy Charge:

~~2.37~~63.110¢ per Kwh

Base Fuel and Purchased Power:

~~2.08~~72.536¢ per Kwh

Minimum Bill:

Basic Service Charge.

Payment:

Bills will be considered past due if not paid by the due date shown on the bill. Past due bills are subject to a late payment charge in accordance with the provisions of Rate 100 or any amendments or alterations thereto.

Date Filed: June 14, 2011

Effective Date: Service rendered on and after July 22, 2011

Issued By: Tamie A. Aberle
Regulatory Affairs Manager

Case No.: PU-10-124



Montana-Dakota Utilities Co.

A Division of MDU Resources Group, Inc.

400 N 4th Street
Bismarck, ND 58501

State of North Dakota Electric Rate Schedule

NDPSC Volume 4
4th Revised Sheet No. 19
Canceling 3rd Revised Sheet No. 19

OPTIONAL TIME-OF-DAY GENERAL ELECTRIC SERVICE Rate 31

Page 1 of 5

Availability:

In all communities served for all types of demand metered general electric service except outside lighting, standby, resale, or other customers covered by special contracts or rate schedules applicable to specific services. The customer's wiring must be arranged so that all service can be measured through one meter.

Rate:

Primary Service:

Basic Service Charge: \$97.0083.00 per month

On-Peak Demand:

October - May \$ 7.5011.00 per Kw

June - September \$10.5014.00 per Kw

Off-Peak Demand:

(In excess of On-Peak) \$2.00 per Kw

On-Peak Energy:

For all Kwh's used during peak hours designated as 12 p.m. to 8 p.m. local time, Monday through Friday.

2.714¢ per Kwh

October - May 2.793¢ per Kwh

June - September 3.793¢ per Kwh

Off-Peak Energy:

For all energy not covered by the On-Peak rating period.

0.7931.864¢ per Kwh

Base Fuel and Purchased Power: 2.0242.454¢ per Kwh

Secondary Service:

Basic Service Charge: \$47.0072.00 per month

Date Filed: June 14, 2011

Effective Date: Service rendered on and after July 22, 2011

Issued By: Tamie A. Aberle
Regulatory Affairs Manager

Case No.: PU-10-124



Montana-Dakota Utilities Co.

A Division of MDU Resources Group, Inc.

400 N 4th Street
Bismarck, ND 58501

State of North Dakota Electric Rate Schedule

NDPSC Volume 4
4th Revised Sheet No. 19
Canceling 3rd Revised Sheet No. 19

OPTIONAL TIME-OF-DAY GENERAL ELECTRIC SERVICE Rate 31

Page 2 of 5

On-Peak Demand:

October – May \$ 9.50 per Kw
June – September ~~\$13.50~~ 12.50 per Kw

Off-Peak Demand:

(In excess of On-Peak) \$2.00 per Kw

Date Filed: June 14, 2011

Effective Date: Service rendered on and
after July 22, 2011

Issued By: Tamie A. Aberle
Regulatory Affairs Manager

Case No.: PU-10-124



Montana-Dakota Utilities Co.

A Division of MDU Resources Group, Inc.

400 N 4th Street
Bismarck, ND 58501

State of North Dakota Electric Rate Schedule

NDPSC Volume 4
8th Revised Sheet No. 19.1
Canceling 7th Revised Sheet No. 19.1

OPTIONAL TIME-OF-DAY GENERAL ELECTRIC SERVICE Rate 31

Page 3 of 5

On-Peak Energy:

For all Kwh's used during peak
hours designated as 12 p.m.
to 8 p.m. local time, Monday
through Friday.

3.714¢ per Kwh

~~October - May~~ 2.793¢ per Kwh

~~June - September~~ 3.793¢ per Kwh

Off-Peak Energy:

For all energy not covered by
the On-Peak rating period.

0.7932.864¢ per Kwh

Base Fuel and Purchased Power:

2.0872.536¢ per Kwh

Minimum Bill:

Basic Service Charge.

Payment:

Bills will be considered past due if not paid by the due date shown on the bill.
Past due bills are subject to a late payment charge in accordance with the
provisions of Rate 100 or any amendments or alterations thereto.

Adjustment Clauses:

Bills are subject to the following adjustments or any amendments or alterations
thereto:

1. Renewable Resource Cost Adjustment Rate 55
2. Generation Resource Recovery Rider Rate 56
3. Environmental Cost Recovery Rider Rate 57
4. Fuel and Purchased Power Adjustment Rate 58
5. Transmission Cost Adjustment Rate 59

Determination of On-Peak Billing Demand:

The demand in kilowatts for billing purposes shall be the maximum 15 minute
measured demand for the on-peak period in the current month. Demands will be
determined to the nearest one-tenth kilowatt. Customers whose loads have

Date Filed: October 21, 2015

Effective Date: Service rendered on and
after January 7, 2016

Issued By: Tamie A. Aberle
Director - Regulatory Affairs

Case No.: PU-15-703



Montana-Dakota Utilities Co.

A Division of MDU Resources Group, Inc.

400 N 4th Street
Bismarck, ND 58501

State of North Dakota Electric Rate Schedule

NDPSC Volume 4
8th Revised Sheet No. 19.1
Canceling 7th Revised Sheet No. 19.1

OPTIONAL TIME-OF-DAY GENERAL ELECTRIC SERVICE Rate 31

Page 4 of 5

rapidly fluctuating and/or intermittent demand characteristics shall be subject to special rules and regulations.

Date Filed: October 21, 2015

Effective Date: Service rendered on and
after January 7, 2016

Issued By: Tamie A. Aberle
Director - Regulatory Affairs

Case No.: PU-15-703



Montana-Dakota Utilities Co.

A Division of MDU Resources Group, Inc.

400 N 4th Street
Bismarck, ND 58501

State of North Dakota Electric Rate Schedule

NDPSC Volume 4
3rd Revised Sheet No. 20
Canceling 2nd Revised Sheet No. 20

GENERAL ELECTRIC SPACE HEATING SERVICE Rate 32

Page 1 of 4

Availability:

In all communities served for space heating service, where the customer also takes service under another general service rate schedule offered by the Company. Space heating equipment, including combination space heating and cooling equipment such as heat pumps and packaged roof-top heating/cooling units where heating use is the principal load may be served under this rate schedule.

Rate:

Basic Service Charge: ~~\$15.00~~21.00 per month

Primary Service:

Demand Charge:

June – September ~~\$9.25~~14.00 per Kw

October – May \$1.05 per Kw

Energy Charge: ~~2.79~~62.110¢ per Kwh

Base Fuel and Purchased Power: ~~2.02~~42.454¢ per Kwh

Secondary Service:

Demand Charge:

June – September ~~\$11.25~~12.50 per Kw

October – May \$1.05 per Kw

Energy Charge: ~~2.87~~63.110¢ per Kwh

Base Fuel and Purchased Power: ~~2.08~~72.536¢ per Kwh

Minimum Bill:

Basic Service Charge.

Payment:

Bills will be considered past due if not paid by the due date shown on the bill.
Past due bills are subject to a late payment charge in accordance with the

Date Filed: June 14, 2011

Effective Date: Service rendered on and
after July 22, 2011

Issued By: Tamie A. Aberle
Regulatory Affairs Manager

Case No.: PU-10-124



Montana-Dakota Utilities Co.

A Division of MDU Resources Group, Inc.

400 N 4th Street
Bismarck, ND 58501

State of North Dakota Electric Rate Schedule

NDPSC Volume 4
3rd Revised Sheet No. 20
Canceling 2nd Revised Sheet No. 20

GENERAL ELECTRIC SPACE HEATING SERVICE Rate 32

Page 2 of 4

provisions of Rate 100 or any amendments or alterations thereto.

Date Filed: June 14, 2011

Effective Date: Service rendered on and
after July 22, 2011

Issued By: Tamie A. Aberle
Regulatory Affairs Manager

Case No.: PU-10-124



Montana-Dakota Utilities Co.

A Division of MDU Resources Group, Inc.

400 N 4th Street
Bismarck, ND 58501

State of North Dakota Electric Rate Schedule

NDPSC Volume 4
1st Revised Sheet No. 22
Canceling Original Sheet No. 22

FIRM SERVICE ECONOMIC DEVELOPMENT Rate 34

Page 1 of 3

Availability:

In all communities served for all types of general electric service which meets one of the following qualifications:

1. New Customers - An applicant with total expected demand of 200 Kw per month and usage of 750,000 Kwh per year is eligible for service under this rate if it can meet any one of the following requirements: (i) its activities are largely or entirely different than that of the previous customer; (ii) that non-seasonal business has not been conducted at the premise for at least three billing periods prior to the application; (iii) that seasonal business has not been conducted at the premise for at least thirteen billing periods prior to the application; or (iv) the facility is newly constructed.
2. Existing Customers and Existing In-state Customers of Competing Suppliers - An existing customer, or an existing in-state customer of a competing supplier with increased demand of 200 Kw per month and increased usage of 750,000 Kwh per year is eligible for service under this rate. Only the expanded portion of the facility will be eligible for the negotiated rate. In addition, the new load must be supplied from a separately metered circuit with separate metering equipment to be installed at the customer's expense. Average usage at the original facility must be at least as great as that which occurred in the previous 12 month period.

Rate:

Basic Service Charge: ~~\$95.00~~100.00 per month

Demand Charge: To Be Negotiated

Energy Charge: Otherwise applicable energy charge for General Service Rate 30.

~~Contracts shall be filed with and approved by the North Dakota Public Service Commission.~~

Minimum Bill:

Basic Service Charge plus Demand Charge.

Date Filed: June 14, 2011

Effective Date: Service rendered on and after July 22, 2011

Issued By: Tamie A. Aberle
Regulatory Affairs Manager

Case No.: PU-10-124



Montana-Dakota Utilities Co.

A Division of MDU Resources Group, Inc.

400 N 4th Street
Bismarck, ND 58501

State of North Dakota Electric Rate Schedule

NDPSC Volume 4
2nd Revised Sheet No. 23
Canceling 1st Revised Sheet No. 23

INTERRUPTIBLE LARGE POWER DEMAND RESPONSE Rate 38

Page 1 of 4

Availability:

In all communities served for power to customers having a demand of 500 Kw or more for its interruptible load available for interruption for up to 100 hours annually. Electric energy for the interruptible load shall be supplied through a separately metered circuit at the same voltage and phase utilized to serve the balance of the customer's electrical load so arranged to allow remote operation by the Company.

Type of Service:

Service under this rate shall be taken by the customer at whatever primary voltage is available at the point of delivery but not less than 2,400 volts. In the event that it is necessary to build a substation on the Company's transmission line to serve the customer, the cost of building the substation shall be a matter of negotiation between the Company and the customer.

Rate:

Basic Service Charge: Specified in the electric service agreement with the Company.

Demand Charge:

October – May \$~~3,259.50~~ per Kw
June – September \$~~6,2511.00~~ per Kw

Energy Charge: 2.1261.617¢ per Kwh

Base Fuel and Purchased Power: 2.0242.454¢ per Kwh

Minimum Bill:

Basic Service Charge plus the Demand Charge (500 Kw minimum).

Payment:

Bills will be considered past due if not paid by the due date shown on the bill. Past due bills are subject to a late payment charge in accordance with the provisions of Rate 100 or any amendments or alterations thereto.

Date Filed: June 14, 2011

Effective Date: Service rendered on and after July 22, 2011

Issued By: Tamie A. Aberle
Regulatory Affairs Manager

Case No.: PU-10-124



Montana-Dakota Utilities Co.

A Division of MDU Resources Group, Inc.

400 N 4th Street
Bismarck, ND 58501

State of North Dakota Electric Rate Schedule

NDPSC Volume 4
2nd Revised Sheet No. 25
Canceling 1st Revised Sheet No. 25

SMALL MUNICIPAL ELECTRIC SERVICE Rate 40 (CLOSED)

Page 1 of 3

Availability:

For all lighting and power requirements with billing demands of 50 kilowatts or less for public buildings or locations supported by public tax levies, and for which the city is liable for payment, in all municipalities served where the Company is operating under a municipal franchise or permit, and the municipality has a standard contract for operation of a street lighting system and/or a municipal pumping system with the Company.

This rate is restricted to small municipal electric service customers who were served under this rate prior to January 27, 1987. Any new small municipal general electric service customer may take service under another applicable rate.

Rate:

Non-Demand:

Basic Service Charge: \$0.650.84 per day

Energy Charge:

October – May:

First 750 Kwh per month ~~3.8684.444¢~~ per Kwh

Over 750 Kwh per month ~~2.8023.344¢~~ per Kwh

June – September: ~~3.8684.444¢~~ per Kwh

Base Fuel and Purchased Power: ~~2.0872.536¢~~ per Kwh

Demand:

Basic Service Charge: \$0.751.00 per day

Demand Charge:

October – May:

10 Kw or less No Charge

Over 10 Kw \$6.258.25 per Kw

June – September: \$8.2511.25 per Kw

Energy Charge: ~~1.3022.444¢~~ per Kwh

Base Fuel and Purchased Power: ~~2.0872.536¢~~ per Kwh

Date Filed: June 14, 2011

Effective Date: Service rendered on and after July 22, 2011

Issued By: Tamie A. Aberle
Regulatory Affairs Manager

Case No.: PU-10-124



Montana-Dakota Utilities Co.

A Division of MDU Resources Group, Inc.

400 N 4th Street
Bismarck, ND 58501

State of North Dakota Electric Rate Schedule

NDPSC Volume 4
5th Revised Sheet No. 26
Canceling 4th Revised Sheet No. 26

MUNICIPAL LIGHTING SERVICE Rate 41

Page 1 of 2

Availability:

For municipal lighting purposes including streets, alleys and other public grounds. Service will be provided all night, every night in the year with a minimum service requirement of 4,000 hours annually, and must be covered by written contract.

Rate:

Primary Service:

Energy Charge: ~~5.0085.671~~¢ per Kwh

Base Fuel and Purchased Power: ~~2.0242.454~~¢ per Kwh

Secondary Service:

Energy Charge: ~~5.5086.171~~¢ per Kwh

Base Fuel and Purchased Power: ~~2.0872.536~~¢ per Kwh

Discount: For contracts of ten years or more 10%

Kwh shall be computed according to the total rated capacity of lamps in use.

Minimum Bill:

As provided in contract.

Payment:

Bills will be considered past due if not paid by the due date shown on the bill. Past due bills are subject to a late payment charge in accordance with the provisions of Rate 100 or any amendments or alterations thereto.

Adjustment Clauses:

Bills are subject to the following adjustments or any amendments or alterations thereto:

1. Renewable Resource Cost Adjustment Rate 55
2. Environmental Cost Recovery Rider Rate 57
3. Fuel and Purchased Power Adjustment Rate 58
4. Transmission Cost Adjustment Rate 59

Date Filed: October 21, 2015

Effective Date: Service rendered on and after January 7, 2016

Issued By: Tamie A. Aberle
Director - Regulatory Affairs

Case No.: PU-15-703



Montana-Dakota Utilities Co.

A Division of MDU Resources Group, Inc.

400 N 4th Street
Bismarck, ND 58501

State of North Dakota Electric Rate Schedule

NDPSC Volume 4
2nd Revised Sheet No. 32
Canceling 1st Revised Sheet No. 32

MUNICIPAL PUMPING SERVICE Rate 48

Page 1 of 3

Availability:

For municipal pumping purposes provided the municipality uses electricity exclusively for all its pumping requirements and purchases all such electricity from the Company. The municipality must sign a contract for a minimum period of one year.

Rate:

Primary Service:

Basic Service Charge: ~~\$12.00~~80.00 per month

Demand Charge:

Connected loads of 10 Kw or less will be billed based on connected load. Connected loads in excess of 10 Kw will be billed based upon the greater of the highest 15 minute interval demand as registered upon a demand meter in the current month or 10 Kw.

October – May: ~~\$3.00~~6.00 per Kw

June – September: ~~\$5.50~~9.00 per Kw

Energy Charge: ~~2.06~~12.708¢ per Kwh

Base Fuel and Purchased Power: ~~2.02~~42.454¢ per Kwh

Secondary Service:

Basic Service Charge: ~~\$10.00~~45.00 per month

Demand Charge:

Connected loads of 10 Kw or less will be billed based on connected load. Connected loads in excess of 10 Kw will be billed based upon the greater of the highest 15 minute interval demand as registered upon a demand meter in the current month or 10 Kw.

October – May: ~~\$5.00~~6.00 per Kw

June – September: ~~\$7.00~~9.00 per Kw

Energy Charge: ~~2.16~~62.808¢ per Kwh

Date Filed: June 14, 2011

Effective Date: Service rendered on and after July 22, 2011

Issued By: Tamie A. Aberle
Regulatory Affairs Manager

Case No.: PU-10-124



Montana-Dakota Utilities Co.

A Division of MDU Resources Group, Inc.

400 N 4th Street
Bismarck, ND 58501

State of North Dakota Electric Rate Schedule

NDPSC Volume 4
6th Revised Sheet No. 32.1
Canceling 5th Revised Sheet No. 32.1

MUNICIPAL PUMPING SERVICE Rate 48

Page 2 of 3

Base Fuel and Purchased Power: ~~2.0872~~.536¢ per Kwh

Discount: For contracts of ten years or more 10%

Minimum Bill:

Basic Service Charge plus Demand Charge.

Payment:

Bills will be considered past due if not paid by the due date shown on the bill.
Past due bills are subject to a late payment charge in accordance with the provisions of Rate 100 or any amendments or alterations thereto.

Power Factor Clause:

The Company reserves the right to require the customer to install adequate equipment so that at all times it can operate its facilities to maintain a power factor between 90% lagging and 90% leading. If the customer operates outside this range, the maximum 15 minute integrated reactive kilovolt amperes in excess of 50% of the maximum 15 minute integrated kilowatt demand for the same month will be billed at \$3.35 per Kvar of such excess demand.

Adjustment Clauses:

Bills are subject to the following adjustments or any amendments or alterations thereto:

1. Renewable Resource Cost Adjustment Rate 55
2. Generation Resource Recovery Rider Rate 56
3. Environmental Cost Recovery Rider Rate 57
4. Fuel and Purchased Power Adjustment Rate 58
5. Transmission Cost Adjustment Rate 59

General Terms and Conditions:

1. Primary service rate is applicable to customers that own their own transformers, related equipment and distribution facilities downstream of the meter, satisfactory to the Company so customer can receive service and be metered at primary voltages of 2,400 volts or greater.

Date Filed: October 21, 2015

Effective Date: Service rendered on and
after January 7, 2016

Issued By: Tamie A. Aberle
Director - Regulatory Affairs

Case No.: PU-15-703



Montana-Dakota Utilities Co.

A Division of MDU Resources Group, Inc.

400 N 4th Street
Bismarck, ND 58501

State of North Dakota Electric Rate Schedule

NDPSC Volume 4
6th Revised Sheet No. 36
Canceling 5th Revised Sheet No. 36

OUTDOOR LIGHTING SERVICE Rate 52

Page 1 of 2

Availability:

For all outdoor lighting including flood lights, billboard lighting, metallic vapor yard lights, and Christmas lights in all communities served. Lighting equipment may be Company-owned or customer-owned.

Rate:

Primary Service:

Energy Charge: ~~6.2886.998~~¢ per Kwh

Base Fuel and Purchased Power: ~~2.0242.454~~¢ per Kwh

Secondary Service:

Energy Charge: ~~6.6947.404~~¢ per Kwh

Base Fuel and Purchased Power: ~~2.0872.536~~¢ per Kwh

~~Discount: For contracts of ten years or more 10%~~

Kwh shall be computed according to the total rated capacity of the units in use.

Payment:

Bills will be considered past due if not paid by the due date shown on the bill. Past due bills are subject to a late payment charge in accordance with the provisions of Rate 100 or any amendments or alterations thereto.

Adjustment Clauses:

Bills are subject to the following adjustments or any amendments or alterations thereto:

1. Renewable Resource Cost Adjustment Rate 55
2. Generation Resource Recovery Rider Rate 56
3. Environmental Cost Recovery Rider Rate 57
4. Fuel and Purchased Power Adjustment Rate 58
5. Transmission Cost Adjustment Rate 59

General Terms and Conditions:

1. Applicable to Company-owned Facilities:
 - a. The Company will install, own and operate the flood light(s), and yard light(s) including a suitable reflector, bracket for mounting and automatic device to control operating hours set to operate from dusk to dawn.

Date Filed: October 21, 2015

Effective Date: Service rendered on and after January 7, 2016

Issued By: Tamie A. Aberle
Director - Regulatory Affairs

Case No.: PU-15-703



Montana-Dakota Utilities Co.

A Division of MDU Resources Group, Inc.

400 N 4th Street
Bismarck, ND 58501

State of North Dakota Electric Rate Schedule

NDPSC Volume 4
Original Sheet No. 39

Renewable Resource Cost Adjustment Rate 55

Page 1 of 2

1. Applicability:

This rate schedule represents a Renewable Resource Cost Adjustment (RRCA) and specifies the procedure to be utilized to recover the jurisdictional costs associated with renewable generation resource modifications or additions approved by the Commission, but not recovered through retail rates. Costs to be recovered may include operation and maintenance expenditures, depreciation, taxes, and a current return on the project costs.

2. Renewable Resource Cost Adjustment:

- a. An adjustment per Kwh will be calculated using the projected capital costs and related expenses, along with the forecasted Kwh sales, to determine a North Dakota jurisdictional revenue requirement to be recovered through the RRCA rates. The return component of the revenue requirement calculation will include the return on equity of ~~10.50 percent pursuant to the terms of the Settlement Agreement approved in Case No. PU-15-703~~ established in the Company's most recent rate case.
- b. The RRCA is applicable to all retail customers for electric energy sold, except those served under special contracts, and are allocated amongst the rate classes based on the Company's ~~AED~~ Energy Demand/Energy Factor No. 3 established in the Company's most recent general rate case.
- c. The RRCA will be adjusted annually (or other period authorized by the Commission) to reflect the Company's most recent projected capital costs and related expenses for projects determined to be recoverable under this schedule.
- d. A true-up will reflect any over or under collection of revenue under the RRCA based on actual expenditures from the preceding twelve month recovery period plus carrying charges or credits accrued at a rate equal to the three-month Treasury Bill rate as published monthly by the Federal Reserve Board.

3. Time and Manner of the Filing:

Montana-Dakota shall file the RRCA at least 60 days prior to the proposed effective date. The filing by Montana-Dakota shall be made by means of a revised RRCA tariff sheet identifying the amounts of the adjustment, the derivation of the RRCA and the resulting RRCA by class.

Date Filed: January 5, 2016

Effective Date: Service rendered on and
after January 7, 2016

Issued By: Tamie A. Aberle
Director – Regulatory Affairs

Case No.: PU-15-703



Montana-Dakota Utilities Co.

A Division of MDU Resources Group, Inc.

400 N 4th Street
Bismarck, ND 58501

State of North Dakota Electric Rate Schedule

NDPSC Volume 4
Original Sheet No. 39.1

Renewable Resource Cost Adjustment Rate 55

Page 2 of 2

4. Renewable Resource Cost Adjustment:

Residential & Small General	<u>\$0.007120.00706</u>	per Kwh
Small General	<u>\$0.00566</u>	per Kwh
Large General	<u>\$0.006900.00681</u>	per Kwh
Lighting	<u>\$0.008650.00612</u>	per Kwh

Date Filed: January 5, 2016

Effective Date: Service rendered on and
after January 7, 2016

Issued By: Tamie A. Aberle
Director – Regulatory Affairs

Case No.: PU-15-703



Montana-Dakota Utilities Co.

A Division of MDU Resources Group, Inc.

400 N 4th Street
Bismarck, ND 58501

State of North Dakota Electric Rate Schedule

NDPSC Volume 4
1st Revised Sheet No. 40
Canceling Original Sheet No. 40

Generation Resource Recovery Rider Rate 56

Page 1 of 2

Applicability:

This rate schedule represents a Generation Resource Recovery Rider (GRRR) and specifies the procedure to be utilized to recover the jurisdictional costs associated with generation resource additions approved by the Commission but not recovered through retail rates. Costs to be recovered may include operations and maintenance expenditures, depreciation, taxes, and a current return on the project costs during construction. Costs being recovered under this tariff are currently not included in the rates established at the time of the Company's last general rate case.

1. Generation Resource Recovery Rider:

- a. The North Dakota jurisdictional GRRR revenue requirement will be allocated to the customer classes based on the Company's AED-Demand Factor No. 2 established in the Company's most recent general rate case. The adjustment applied to the Residential and Small General Service Classes will be calculated based on the customer class revenue requirement and the forecasted Kwh for the forecasted period. The adjustment applied to the Large General Service Class will be calculated based on the customer class revenue requirement and the forecasted demand for the forecasted period and expressed as a KW charge. The return component of the revenue requirement calculation will include authorized return on equity from the Company's most recent general rate case.
- b. The GRRR is applicable to all retail customers for electric energy sold, except those served under lighting schedules and special contracts, and are allocated amongst the rate classes based on the applicable demand factor.
- c. The GRRR will be adjusted annually (or other period authorized by the Commission) to reflect the Company's most recent projected capital costs and related expenses for projects determined to be recoverable under this schedule.
- d. A true-up will reflect any over or under collection of revenue under the GRRR based on actual expenditures from the preceding twelve month recovery period plus carrying charges or credits accrued at a rate equal to the three-month Treasury Bill rate as published monthly by the Federal Reserve Board.

Date Filed: October 21, 2015

Effective Date: Service rendered on and after March 15, 2016

Issued By: Tamie A. Aberle
Director – Regulatory Affairs

Case No.: PU-15-704



Montana-Dakota Utilities Co.

A Division of MDU Resources Group, Inc.
400 N 4th Street
Bismarck, ND 58501

State of North Dakota Electric Rate Schedule

NDPSC Volume 4
2nd Revised Sheet No. 40.1
Canceling 1st Revised Sheet No. 40.1

Generation Resource Recovery Rider Rate 56

Page 2 of 2

2. Time and Manner of the Filing:

Montana-Dakota shall file the GRRR at least 60 days prior to the proposed effective date. The filing by Montana-Dakota shall be made by means of a revised GRRR tariff sheet identifying the amounts of the adjustment, the derivation of the GRRR and the resulting GRRR by class.

3. Generation Resource Recovery Rider:

Residential	<u>\$0.005000.00000</u> per Kwh
Small General	<u>\$0.003490.00000</u> per Kwh
Large General	<u>\$1.440.00</u> per KW

Date Filed: October 21, 2015

Effective Date: Service rendered on and after March 15, 2016

Issued By: Tamie A. Aberle
Director – Regulatory Affairs

Case No.: PU-15-704



Montana-Dakota Utilities Co.

A Division of MDU Resources Group, Inc.

400 N 4th Street
Bismarck, ND 58501

State of North Dakota Electric Rate Schedule

NDPSC Volume 4
3rd Revised Sheet No. 41
Canceling 2nd Revised Sheet No. 41

Environmental Cost Recovery Rider Rate 57

Page 1 of 2

1. Applicability:

This rate schedule represents an Environmental Cost Recovery Rider (ECRR) and specifies the procedure to be utilized to recover the jurisdictional costs to be incurred by the Company in complying with federal and state environmental mandates determined to be eligible for recovery under NDCC 49-05-04.2. Costs to be recovered may include capital expenditures, depreciation, taxes, and a current return on the project costs during construction. Costs being recovered under this tariff are currently not included in the rates established at the time of the Company's last general rate case.

2. Environmental Cost Recovery Rider:

- a. An adjustment per Kwh will be calculated using the projected capital costs and related expenses, along with the forecasted Kwh sales, to determine a North Dakota jurisdictional revenue requirement to be recovered through the ECRR. The return component of the revenue requirement calculation will be the authorized rate of return from the Company's most recent general rate case.
- b. The ECRR is applicable to all retail customers for electric energy sold, except those served under special contracts, and are allocated amongst the rate classes based on the Company's AED-Demand Factor No. 2 established in the Company's most recent general rate case.
- c. The ECRR will be adjusted annually (or other period authorized by the Commission) to reflect the Company's most recent projected capital costs and related expenses for projects determined to be eligible under NDCC 49-05-04.2.
- d. A true-up will reflect any over or under collection of revenue under the ECRR based on actual expenditures from the preceding twelve month recovery period plus carrying charges or credits accrued at a rate equal to the three-month Treasury Bill rate as published monthly by the Federal Reserve Board.

3. Time and Manner of the Filing:

Montana-Dakota shall file the ECRR at least 30 days prior to the proposed effective date. The filing by Montana-Dakota shall be made by means of a revised ECRR tariff sheet identifying the amounts of the adjustment, the derivation of the ECRR and the resulting ECRR by class.

Date Filed: May 31, 2013

Effective Date: Service rendered on and
after January 15, 2014

Issued By: Tamie A. Aberle
Director - Regulatory Affairs

Case No.: PU-13-83 & PU-13-85



Montana-Dakota Utilities Co.

A Division of MDU Resources Group, Inc.

400 N 4th Street
Bismarck, ND 58501

State of North Dakota Electric Rate Schedule

NDPSC Volume 4
4th Revised Sheet No. 41.1
Canceling 3rd Revised Sheet No. 41.1

Environmental Cost Recovery Rider Rate 57

Page 2 of 2

4. Environmental Cost Recovery Rider:

Residential and Small General	0.3960.000¢ per Kwh
Large General	0.3230.000¢ per Kwh
Lighting	0.2550.000¢ per Kwh

Date Filed: April 10, 2015

Effective Date: Service rendered on and
after July 1, 2015

Issued By: Tamie A. Aberle
Director - Regulatory Affairs

Case No.: PU-15-143



Montana-Dakota Utilities Co.

A Division of MDU Resources Group, Inc.

400 N 4th Street
Bismarck, ND 58501

State of North Dakota Electric Rate Schedule

NDPSC Volume 4
5th Revised Sheet No. 42
Canceling 4th Revised Sheet No. 42

FUEL AND PURCHASED POWER ADJUSTMENT Rate 58

Page 1 of 3

1. Applicability:

This rate schedule sets forth the procedure to be used in calculating the Fuel and Purchased Power Adjustment (FPPA). It specifies the procedure to be utilized to adjust the rates for electricity sold under Montana-Dakota's rate schedules in order to reflect: (a) changes in Montana-Dakota's average cost of fuel and purchased power, including electric wholesale sales margin credits as allocated to North Dakota; and (b) amortization of the Deferred Fuel Cost Account.

2. Effective Date and Limitation on Adjustments:

- a. Unless otherwise ordered by the Commission, the effective dates of the Fuel and Purchased Power Adjustment shall be service rendered on and after the first day of each month. The effective date of the adjustment for amortization of the Deferred Fuel Cost Account shall be April 1 of each year.
- b. Montana-Dakota shall file an adjustment to reflect changes in its average cost of electric supply only when the amount of change in such adjustment is at least .001 cents per Kwh. The adjustment to be effective April 1 shall be filed each year, regardless of the amount of the change.

3. Fuel and Purchased Power Adjustment:

- a. The monthly Fuel and Purchased Power Adjustment shall be calculated separately for primary service and secondary service customers and shall reflect the changes in Montana-Dakota's cost of fuel and purchased power as compared to the cost of fuel and purchased power approved in its base rates plus the annual Surcharge Adjustment. The base fuel and purchased power cost shall be ~~2.0242~~ 2.454¢ per Kwh for primary service and ~~2.0872~~ 2.536¢ per Kwh for secondary service as established in the most recent general rate case.
- b. The cost of fuel and purchased power shall be calculated separately for primary service customers and secondary service customers, and shall be the sum of the following costs for the most recent four month period, as allocated to North Dakota and to the primary and secondary customer classes:
 1. The cost of fossil and other fuels and reagents, including sand, recorded in Account Nos. 501, 502 and 547.

Date Filed: July 16, 2012

Effective Date: Service rendered on and
after August 1, 2012

Issued By: Tamie A. Aberle
Regulatory Affairs Manager

Case No.: PU-12-011



Montana-Dakota Utilities Co.

A Division of MDU Resources Group, Inc.

400 N 4th Street
Bismarck, ND 58501

State of North Dakota Electric Rate Schedule

NDPSC Volume 4

4th Revised Sheet No. 42.1

Canceling 3rd Revised Sheet No. 42.1

FUEL AND PURCHASED POWER ADJUSTMENT Rate 58

Page 2 of 3

2. Natural gas and pipeline reservation charges recorded in Account No. 547
 3. The net cost of purchases and costs linked to the utility's load serving obligation associated with participation in the wholesale electric energy markets as recorded in Account No. 555
 4. Capacity purchases as recorded in Account No. 555.
 5. Regional Market Administration expenses recorded in Account No. 575.
 - ~~6. Less the cost of fuel and purchased power recovered from electric wholesale sales.~~
 - ~~7.6. Less 100 percent of the wholesale sales margin revenue.~~
 - ~~8.7. Less the revenue from the sales of Renewable Energy Credits (RECs).~~
- c. The cost per Kwh for the month is the sum of 3(b) above divided by retail sales volumes for the most recent four month period for the primary and secondary service classes.

4. Surcharge Adjustment:

All sales rate schedules shall be subject to a Surcharge Adjustment to be effective on April 1 each year. The Surcharge Adjustment per Kwh sold shall reflect the amortization of the applicable balance in the Deferred Fuel Cost Account calculated by dividing the applicable balance by the estimated Kwh sales for the twelve months following the effective date of the adjustment.

- a. The balance in the Deferred Fuel Cost Account (Account 182.3) includes:

1. The current month over or under recovery, determined as follows:
 - i. Montana-Dakota shall determine each month the cost for that month's fuel and purchased power.
 - ii. Montana-Dakota shall subtract from the month's unit cost the unit cost reflected in rates for that month.

Date Filed: February 26, 2014

Effective Date: Service rendered on and
after August 20, 2014

Issued By: Tamie A. Aberle
Director- Regulatory Affairs

Case No.: PU-14-109



Montana-Dakota Utilities Co.

A Division of MDU Resources Group, Inc.

400 N 4th Street
Bismarck, ND 58501

State of North Dakota Electric Rate Schedule

NDPSC Volume 4

54th Revised Sheet No. 42.2

Canceling 53rd Revised Sheet No. 42.2

FUEL AND PURCHASED POWER ADJUSTMENT Rate 58

Page 3 of 3

iii. The resulting difference (positive or negative) shall be multiplied by the ~~Kwh's sold~~ included that month under each rate schedule.

2. Refunds from supplier(s) and market operators with respect to fuel and purchased power costs.

3. Carrying charges or credits at a rate equal to the three-month Treasury Bill rate as published monthly by the Federal Reserve Board.

4. The balance in the Deferred Fuel Cost Account shall be decreased each month by the amount of the Surcharge Adjustment multiplied by the Kwh sales for the month. ~~The amount amortized shall be applied pro-rata between the Deferred Fuel Cost Account and the interest balance.~~

5. Manner of Filing:

The Company shall file a monthly statement showing the calculation of the Fuel and Purchased Power Adjustment with the Commission prior to implementing the monthly adjustment. The adjustment in rates shall be effective with service rendered on and after the first day of each month, unless the Commission shall otherwise order.

6. Fuel and Purchased Power Adjustment:

	<u>Primary</u>	<u>Secondary</u>
Base Fuel	2.0242.454¢	2.0872.536¢
Fuel and Purchased Power Adjustment	0.1170.000	0.1630.000
Total FPPA	2.1412.454¢	2.2502.536¢

Date Filed: September 16, 2016

Effective Date: Service rendered on and after October 1, 2016

Issued By: Tamie A. Aberle
Director- Regulatory Affairs

Case No.: PU-16-011



Montana-Dakota Utilities Co.

A Division of MDU Resources Group, Inc.

400 N 4th Street
Bismarck, ND 58501

State of North Dakota Electric Rate Schedule

NDPSC Volume 4
4th Revised Sheet No. 43.1
3rd Revised Sheet No. 43.1

TRANSMISSION COST ADJUSTMENT Rate 59

Page 2 of 2

d. The true-up will reflect any over or under collection of revenue under the Transmission Adjustment from the preceding twelve month period plus carrying charges or credits accrued at a rate equal to the three-month Treasury Bill rate as published monthly by the Federal Reserve Board.

3. Time and Manner of Filing:

Montana-Dakota shall file the Transmission Adjustment at least 30 days prior to the proposed effective date. The filing by Montana-Dakota shall be made by means of a revised Transmission Adjustment tariff sheet identifying the amounts of the adjustment, the derivation of the adjustment and the resulting Transmission Adjustment rate.

4. Transmission Cost Adjustment Rate by class:

Residential & Small General	<u>\$0.003290.00298</u>
Large General	<u>\$0.002930.00253</u>
Lighting	<u>\$0.002150.00116</u>

Date Filed: January 15, 2016

Effective Date: Service rendered on an interim basis
on and after February 12, 2016

Issued By: Tamie A. Aberle
Director - Regulatory Affairs

Case No.: PU-15-747



Montana-Dakota Utilities Co.

A Division of MDU Resources Group, Inc.

400 N 4th Street
Bismarck, ND 58501

State of North Dakota Electric Rate Schedule

NDPSC Volume 4
1st Revised Sheet No. 49
Cancelling Original Sheet No. 49

TABLE OF CONTENTS GENERAL PROVISIONS Rate 100

Page 1 of 9

<u>Title</u>	<u>Page No.</u>
I. Purpose	2
II. Definitions	2
III. General Terms and Conditions	3
1. Rules for Application of Electric Service	3-4
2. Consumer Deposits	4-5
3. Late Payment Charge	5
4. Returned Check Charge	5
5. Tax Clause	5-6
6. Utility Services Performed After Normal Business Hours	6
7. Reconnection Fee for Seasonal Customers	6
8. Discontinuance of Service for Nonpayment of Bill	6-7
9. Discontinuance of Service for Causes Other Than Nonpayment of Bills	7-8
10. Bill Discount for Qualifying Employees	8
11. Method of Computing Initial or Final Bills for Electric Service for Less Than a Full Monthly Billing Period	8
12. Selective Testing Plan for Meters	8
13. Billing Adjustments	8-9
14. Modification of Rates, Rules and Regulations	9

Date Filed: June 20, 2013

Effective Date: Service rendered on and
after August 1, 2013

Issued By: Tamie A. Aberle
Director of Regulatory Affairs

Case No.: PU-13-385



Montana-Dakota Utilities Co.

A Division of MDU Resources Group, Inc.

400 N 4th Street
Bismarck, ND 58501

State of North Dakota Electric Rate Schedule

NDPSC Volume 4
Original Sheet No. 49.4

GENERAL PROVISIONS Rate 100

Page 5 of 9

days after written request for termination is made to the utility by the guarantor. However, no agreement shall be terminated without the customer having made satisfactory settlement for any balance which the customer owes the Company. Upon termination of a guarantee contract, a new contract or a cash deposit may be required by the Company.

iii. A deposit shall earn interest at the rate paid by the Bank of North Dakota on a six-month certificate of deposit as of the first business day of each year. Interest shall be credited to the customer's account annually during the month of December.

iv. Deposits shall be refunded to customers at termination provided all billings for service have been paid. Deposits will be refunded to all active customers, after the deposit has been held for 12 months, provided a prompt payment record has been established.

3. LATE PAYMENT CHARGE:

Bills will be considered past due if not paid by the due date shown on the bill. An amount equal to 1% per month will be applied to any ~~unpaid balance existing at the immediate subsequent billing date~~ past due balance.

4. RETURNED CHECK CHARGE:

A charge of ~~\$1540.00~~ will be collected by the Company for each check charged back to the Company by a bank.

5. TAX CLAUSE:

In addition to the charges provided for in the electric tariffs of the Company, there shall be charged pro rata amounts which, on an annual basis, shall be sufficient to yield to the Company the full amount of any sales, use or excise taxes, whether they be denominated as license taxes, occupation taxes, business taxes, privilege taxes, or otherwise, levied against or imposed upon the Company by any municipality, political subdivision, or other entity, for the privilege of conducting its utility operations therein.

Date Filed: June 14, 2011

Effective Date: Service rendered on and after July 22, 2011

Issued By: Tamie A. Aberle
Director of Regulatory Affairs

Case No.: PU-10-124



Montana-Dakota Utilities Co.

A Division of MDU Resources Group, Inc.

400 N 4th Street
Bismarck, ND 58501

State of North Dakota Electric Rate Schedule

NDPSC Volume 4
Original Sheet No. 49.4

GENERAL PROVISIONS Rate 100

Page 6 of 9

The charges to be added to the customer's service bills under this clause

Date Filed: June 14, 2011

Effective Date: Service rendered on and
after July 22, 2011

Issued By: Tamie A. Aberle
Director of Regulatory Affairs

Case No.: PU-10-124



Montana-Dakota Utilities Co.

A Division of MDU Resources Group, Inc.

400 N 4th Street
Bismarck, ND 58501

State of North Dakota Electric Rate Schedule

NDPSC Volume 4
Original Sheet No. 49.5

GENERAL PROVISIONS Rate 100

Page 7 of 9

shall be limited to the customers within the corporate limits of the municipality, political subdivision or other entity imposing the tax.

6. UTILITY SERVICES PERFORMED AFTER NORMAL BUSINESS HOURS:

For service requested by customers after the Company's normal business hours and on Saturday, Sunday, or legal holidays, a charge will be made for labor at standard overtime service rates and materials at retail prices.

Customers requesting service after the Company's normal business hours will be informed of the after hour service rate and encouraged to have the service performed during normal business hours.

7. RECONNECTION FEE FOR SEASONAL CUSTOMERS:

~~A charge fee of \$20.00 will be collected for reconnecting electric service to any customer who requests reconnection of service, at a location where the same customer discontinued the same service has disconnected electric service at the same location during the preceding twelve-month period.~~

Applicable Charge:

- i. Customers with non-demand meters: \$20.00
- ii. Customers with demand meters: \$40.00

8. DISCONTINUANCE OF SERVICE FOR NONPAYMENT OF BILL:

- i. Pursuant to North Dakota Administrative Rules 69-09-02-05.1(1), the Company may disconnect service if the customer is delinquent in payment for service, and fails to pay for service or enter into a satisfactory installment agreement with the Company for payment within ten (10) days of the Company giving the customer written notice of the Company's intention to discontinue service on account of payment delinquency.
- ii. All bills for service are due when rendered and will be considered delinquent if not paid by the due date shown on the bill. If any customer shall become delinquent in the payment of service bills,

Date Filed: June 14, 2011

Effective Date: Service rendered on and after July 22, 2011

Issued By: Tamie A. Aberle
Director of Regulatory Affairs

Case No.: PU-10-124



Montana-Dakota Utilities Co.

A Division of MDU Resources Group, Inc.

400 N 4th Street
Bismarck, ND 58501

State of North Dakota Electric Rate Schedule

NDPSC Volume 4
Original Sheet No. 49.5

GENERAL PROVISIONS Rate 100

Page 8 of 9

such service may be discontinued by the Company under the applicable rules of the Commission.

- iii. If a customer's credit standing becomes unsatisfactory after a deposit has been refunded or if the deposit is inadequate to cover the estimated charge for furnishing service for a 60-day period, a

Date Filed: June 14, 2011

Effective Date: Service rendered on and after July 22, 2011

Issued By: Tamie A. Aberle
Director of Regulatory Affairs

Case No.: PU-10-124



Montana-Dakota Utilities Co.

A Division of MDU Resources Group, Inc.

400 N 4th Street
Bismarck, ND 58501

State of North Dakota Electric Rate Schedule

NDPSC Volume 4
1st Revised Sheet No. 58.2
Canceling Original Sheet No. 58.2

TABLE OF CONTENTS ELECTRIC SERVICE RULES AND REGULATIONS Rate 110

Page 3 of 31

			<u>Page No.</u>
Section	400	- SECONDARY VOLTAGE SERVICE (Under 600 Volts)	
	401	Secondary Voltage Service Connections	15
	402	Service Connections and Disconnections	16
	403	Number of Service Drops	16
	404	Services in Raceways	16
	405	Service Entrance Requirements	16
	406	Identification of Conductors	16
	407	Overhead Service Drops	17-18
	408	Secondary Voltage Underground Service	19
	409	Mobile Home Service	19
Section	500	- PRIMARY VOLTAGE SERVICE (2400 Volts or More)	
	501	General	19
	502	Service Entrance Equipment	20
	503	Overcurrent Protection	20
	504	Disconnecting Means	20
	505	Load Balance	20
Section	600	- METERING	
	601	General	20
	602	Meter Installations	21-22
	603	Meter-Switch-Fuse Wiring Sequence	22
	604	Meter Locations	22-23
	605	Outdoor Metering	23
	6056	Indoor Metering	23
	6067	Wiring Diagrams	23
	6078	Labeling	23
	6089	Seals	234

Date Filed: March 25, 2005

Effective Date: Service rendered on and
after September 7, 2005

Issued By: Donald R. Ball
Assistant Vice President
Regulatory Affairs

Case No.: PU-399-05-180



Montana-Dakota Utilities Co.

A Division of MDU Resources Group, Inc.

400 N 4th Street
Bismarck, ND 58501

State of North Dakota Electric Rate Schedule

NDPSC Volume 4
1st Revised Sheet No. 58.3
Canceling Original Sheet No. 58.3

TABLE OF CONTENTS ELECTRIC SERVICE RULES AND REGULATIONS Rate 110

Page 4 of 31

Section	700	- UTILIZATION EQUIPMENT	
	701	Interfering Loads	24
	702	Voltage Flicker and Harmonics	24
	703	Power Factor	24
	704	X-Ray Equipment	254
	705	Electric Welders	25
	706	Electric Motors	25-26
	707	Flashing Display Signs	26
	708	Fluorescent and Gaseous Tub Lighting	26
	709	Electric Heat Equipment	26
	710	Computers and Electronic Equipment	26
	711	Carrier Equipment	26

Date Filed: March 25, 2005

Effective Date: Service rendered on and
after September 7, 2005

Issued By: Donald R. Ball
Assistant Vice President
Regulatory Affairs

Case No.: PU-399-05-180



Montana-Dakota Utilities Co.

A Division of MDU Resources Group, Inc.

400 N 4th Street
Bismarck, ND 58501

State of North Dakota Electric Rate Schedule

NDPSC Volume 4
1st Revised Sheet No. 58.4
Canceling Original Sheet No. 58.4

TABLE OF CONTENTS ELECTRIC SERVICE RULES AND REGULATIONS Rate 110

Page 5 of 31

Page No.

ILLUSTRATIONS

Figure 1 - Typical Service Attachment	27
Figure 2 - Transformer Rated Metering, Padmount Transformer	28
Figure 3 - Transformer Rated Metering, Overhead or Underground Service	29
Figure 4 - Polyphase Self Contained Meter Connections	30
Figure 5 - Typical Padmount Equipment Installation	31
Figure 6 - <u>Typical Transition Cabinet Installation</u>	<u>32</u>

Date Filed: March 25, 2005

Effective Date: Service rendered on and after September 7, 2005

Issued By: Donald R. Ball
Assistant Vice President
Regulatory Affairs

Case No.: PU-399-05-180



Montana-Dakota Utilities Co.

A Division of MDU Resources Group, Inc.

400 N 4th Street
Bismarck, ND 58501

State of North Dakota Electric Rate Schedule

NDPSC Volume 4
1st Revised Sheet No. 58.7
Canceling Original Sheet No. 58.7

ELECTRIC SERVICE RULES AND REGULATIONS Rate 110

Page 8 of 31

104.2 Customer's Equipment – Neither by inspection or rejection, nor in any other way does the Company give any warranty, expressed or implied, as to the adequacy, safety or other characteristics of any structures, equipment, lines, appliances or devices owned, installed or maintained by the customer, leased by the customer from third parties or used on the customers premise. It is the obligation of the customer to consult with the Company regarding available maximum fault current and to provide such protection devices as may be necessary to safeguard the equipment and installation from interruptions, variation in voltage and frequency, single-phase energization of three-phase lines, reversal of phase rotation or other abnormal conditions. (Refer to Paragraph 710)

104.3 Company Equipment and Use of Service – The Company will not be liable for any loss, injury, death or damage resulting in any way from the supply or use of electricity or from the presence or operation of the Company's structures, equipment, lines, appliances or devices on the customer's premises, except loss, injuries, death, or damages resulting from the negligence of the Company.

104.4 Indemnification – Customer agrees to indemnify and hold Company harmless from any and all injury, death, loss or damage resulting from customer's negligent or wrongful acts under and during the term of service. Company agrees to indemnify and hold customer harmless from any and all injury, death, loss or damage resulting from Company's negligent or wrongful acts under and during the term of service.

104.5 Force Majeure – In the event of either party being rendered wholly or in part by force majeure unable to carry out its obligations, then the obligations of the parties hereto, so far as they are affected by such force majeure, shall be suspended during the continuance of any inability so caused. Such causes or contingencies affecting the performance by either party, however, shall not relieve it of liability in the event of its concurring negligence or in the event of its failure to use due diligence to remedy the situation and remove the cause in an adequate manner and with all reasonable dispatch, nor shall such causes or contingencies affecting the performance relieve either party from its obligations to make payments of amounts then due hereunder, nor shall such causes or contingencies relieve either party of liability unless such party shall give notice and full particulars of the same in writing or by telephone to the other party as soon as possible after the occurrence relied on.

Date Filed: March 25, 2005

Effective Date: Service rendered on and after September 7, 2005

Issued By: Donald R. Ball
Assistant Vice President
Regulatory Affairs

Case No.: PU-399-05-180



Montana-Dakota Utilities Co.

A Division of MDU Resources Group, Inc.

400 N 4th Street
Bismarck, ND 58501

State of North Dakota Electric Rate Schedule

NDPSC Volume 4

2nd Revised Sheet No. 58.20

Canceling 1st Revised Sheet No. 58.20

ELECTRIC SERVICE RULES AND REGULATIONS Rate 110

Page 21 of 31

602. Meter Installations

602.1 The Company will furnish all meters required for billing purposes. It shall be the customer's responsibility to furnish, install and maintain the meter mounting device. Company approved specifications for electric meter sockets and metering transformer enclosures are listed below:

Self-Contained Meter Sockets – Single-Phase, Three-Phase and Multiple Position Type

1. The customer will utilize meter sockets from a Company approved list of manufacturer and models as posted on the Company's website.
42. U.L. approved, ringless style.
23. 100 ampere minimum for overhead service installations.
34. 150 ampere minimum for underground service installations.
5. Stud connectors are required for all sockets rated 320 amps or greater.
6. For sockets rated below 320 amps, stud connectors are recommended.
Only Company specified meter sockets are approved with lay-in connectors.
47. Equipped with a fifth terminal in the nine o'clock position where network metering is required.
58. A lever by-pass feature is required for all commercial and industrial installations. Upon review by Company, an exemption may be provided.
69. A lever by-pass feature is recommended for all residential installations.

Metering Transformer Rated Meter Socket

1. U.L. approved, ringless style with a one piece cover.
2. Minimum size must provide space for test switch installation ~~and phase shifting transformer where required.~~
3. Socket must have six terminals for single phase and 13 terminals for all other configurations.
4. Automatic by-pass feature is not acceptable.
5. ~~Consult with Company prior to purchasing any instrument rated socket.~~ The customer will utilize instrument rated meter sockets from a Company approved list of manufacturer and models.

Metering Transformer Enclosure (Secondary Service)

1. Recommend a durable, weather-resistant finish and weatherproof seal.
2. Must be provided with hinge-type cover and provisions to attach locking or sealing device.

Date Filed: June 14, 2011

Effective Date: Service rendered on and after July 22, 2011

Issued By: Tamie A. Aberle
Regulatory Affairs Manager

Case No.: PU-10-124



Montana-Dakota Utilities Co.

A Division of MDU Resources Group, Inc.

400 N 4th Street
Bismarck, ND 58501

State of North Dakota Electric Rate Schedule

NDPSC Volume 4

2nd Revised Sheet No. 58.20

Canceling 1st Revised Sheet No. 58.20

ELECTRIC SERVICE RULES AND REGULATIONS Rate 110

Page 21 of 31

3. Minimum size 10" x 24" x 30" with suitable mounting brackets for current and voltage transformers.
4. Consult with Company prior to purchasing any metering transformer enclosure.

Date Filed: June 14, 2011

Effective Date: Service rendered on and
after July 22, 2011

Issued By: Tamie A. Aberle
Regulatory Affairs Manager

Case No.: PU-10-124



Montana-Dakota Utilities Co.

A Division of MDU Resources Group, Inc.

400 N 4th Street
Bismarck, ND 58501

State of North Dakota Electric Rate Schedule

NDPSC Volume 4
1st Revised Sheet No. 58.21
Canceling Original Sheet No. 58.21

ELECTRIC SERVICE RULES AND REGULATIONS Rate 110

Page 22 of 31

602.2 Self-contained rated meter sockets shall, ~~where possible,~~ be placed outdoors.

602.3 On instrument rated meter sockets, the Company will furnish and install the metering transformers. ~~Where practical,~~ ~~s~~Such meter sockets shall be arranged for outdoor metering. (Refer to Figures 2 and 3.)

602.4 Where a secondary metering transformer enclosure is required, the customer shall furnish and install an enclosure. Such enclosures shall contain only the service entrance conductors and metering transformers. The metering transformers shall be installed on the line side of the customer's disconnecting device. Suitable lugs, connectors, etc. for connecting metering transformers to service mains shall be provided by the customer. (Refer to Paragraph 602.1)

602.5 For installations having switchboards, the metering transformers may be mounted in the switchboard bus, provided they are accessible for changing and testing. Metering transformers shall be mounted on the source side of the main switch.

602.6 Meters and test switches may be mounted on a suitable unhinged panel adjacent to the metering transformer enclosure.

602.7 No device other than a Company-owned or Company-approved device shall be placed into the meter socket.

603. Meter-Switch-Fuse Wiring Sequence

For all secondary voltage metering installations the meter, entrance switch and main line fuse or breaker shall be installed in the order named with respect to power flow. All circuits downstream from the meter shall have proper overcurrent protection devices. A customer-owned main service switch shall be installed on the source side of all 480 volt, self-contained meters. This switch shall be located no closer than three feet either left or right of the meter socket, and the switch cover is sealed by Company.

604. Meter Locations

604.1 Each meter shall be located outdoors in a place of convenient access where it will not create a hazard. The location shall be agreed upon by the customer's representative and the Company. (Refer to Figure 1.)

Date Filed: March 25, 2005

Effective Date: Service rendered on and after September 7, 2005

Issued By: Donald R. Ball
Assistant Vice President
Regulatory Affairs

Case No.: PU-399-05-180



Montana-Dakota Utilities Co.

A Division of MDU Resources Group, Inc.

400 N 4th Street
Bismarck, ND 58501

State of North Dakota Electric Rate Schedule

NDPSC Volume 4
1st Revised Sheet No. 58.22
Canceling Original Sheet No. 58.22

ELECTRIC SERVICE RULES AND REGULATIONS Rate 110

Page 23 of 31

604.2 Meters shall be located so that there is not less than 3 feet of unobstructed space, from the ground up, in front of the meter so that the center line of the meter is not less than 4 feet nor more than 5 feet above the floor, ground, or permanent platform from which the reading will be taken. On group installations, the minimum height is 2 feet - 6 inches and the maximum is 6 feet. The minimum center spacing between meter sockets shall be 7 ½ inches horizontally and 8 ½ inches vertically.

605. Outdoor Metering

~~605.1 Outdoor meters~~ 604.3 Meter Sockets shall be permanently mounted on secure structures such as houses, buildings, poles, etc. All required conduit will be provided by customer. (Refer to Figures 1, 2, and 3.)

~~605.2~~ 604.4 Enclosures shall not be placed over the meter socket unless approved by the Company.

6056. Indoor Metering

Meters shall be located outdoors as noted in Paragraph 604.1. However, depending on the circumstance and after consulting with the Company, locating the meters indoors may be approved on a case by case basis. Where approved, indoor meters for multiple dwellings, large office buildings, etc. shall be grouped and located as near the service entrance location as practicable. In the event such location renders the automatic meter reading equipment ineffective customer will be responsible for costs associated with remedying the situation.

6067. Wiring Diagrams

Typical wiring diagrams for various types of self-contained meters are shown on Figure 4. These are subject to change from time to time with advancement in available metering equipment.

6078. Labeling

Where two or more meter mounting devices are installed at one location, each shall be labeled so that it may be identified as to the customer served. Electrical contractors are requested and cautioned to check and identify wiring circuits carefully to avoid metering errors due to incorrect circuitry. Permanent (mechanically fastened) engraved plates shall be placed on the exterior of the meter base on a non-removable panel.

6089. Seals

All meters and all points of access to customer wiring on the source side of the meter will be sealed by the Company. All cabinets and switch boxes, either inside or outside of the

Date Filed: March 25, 2005

Effective Date: Service rendered on and after September 7, 2005

Issued By: Donald R. Ball
Assistant Vice President
Regulatory Affairs

Case No.: PU-399-05-180



Montana-Dakota Utilities Co.

A Division of MDU Resources Group, Inc.

400 N 4th Street
Bismarck, ND 58501

State of North Dakota Electric Rate Schedule

NDPSC Volume 4
1st Revised Sheet No. 58.22
Canceling Original Sheet No. 58.22

ELECTRIC SERVICE RULES AND REGULATIONS Rate 110

Page 23 of 31

building which contain unmetered wires, shall have provisions made for sealing before service will be supplied.

Date Filed: March 25, 2005

Effective Date: Service rendered on and
after September 7, 2005

Issued By: Donald R. Ball
Assistant Vice President
Regulatory Affairs

Case No.: PU-399-05-180



Montana-Dakota Utilities Co.

A Division of MDU Resources Group, Inc.

400 N 4th Street
Bismarck, ND 58501

State of North Dakota Electric Rate Schedule

NDPSC Volume 4
1st Revised Sheet No. 58.26
Canceling Original Sheet No. 58.26

ELECTRIC SERVICE RULES AND REGULATIONS Rate 110

Page 27 of 31

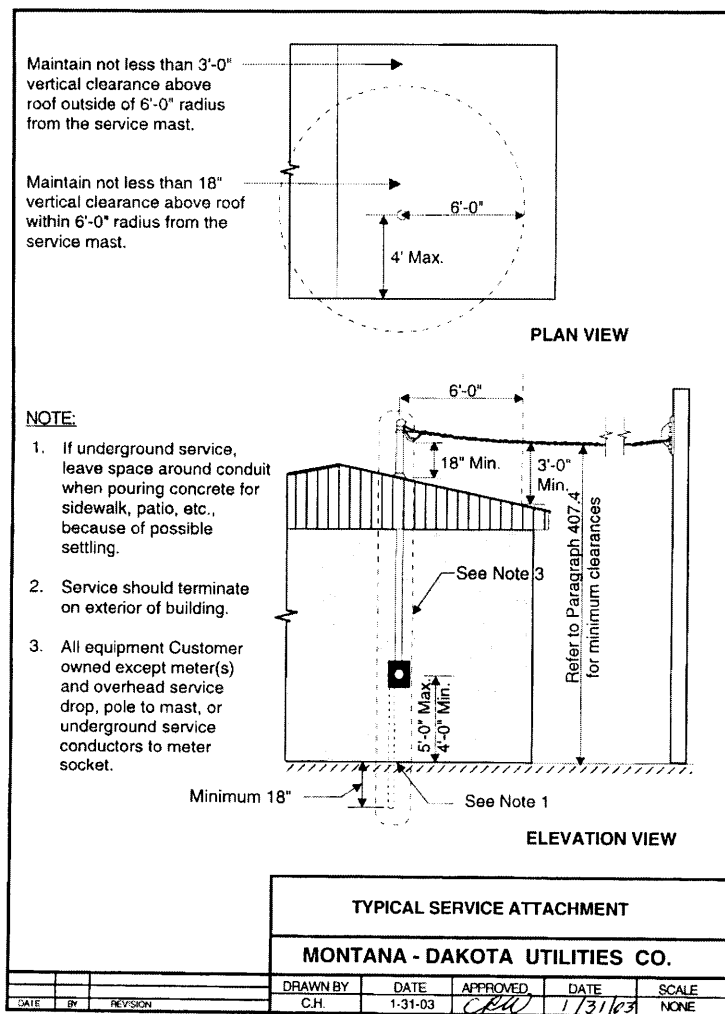


FIGURE 1

Date Filed: March 25, 2005

Effective Date: Service rendered on and after September 7, 2005

Issued By: Donald R. Ball
Assistant Vice President
Regulatory Affairs

Case No.: PU-399-05-180



Montana-Dakota Utilities Co.

A Division of MDU Resources Group, Inc.

400 N 4th Street
Bismarck, ND 58501

State of North Dakota Electric Rate Schedule

NDPSC Volume 4
1st Revised Sheet No. 58.27
Canceling Original Sheet No. 58.27

TABLE OF CONTENTS ELECTRIC SERVICE RULES AND REGULATIONS Rate 110

Page 28 of 31

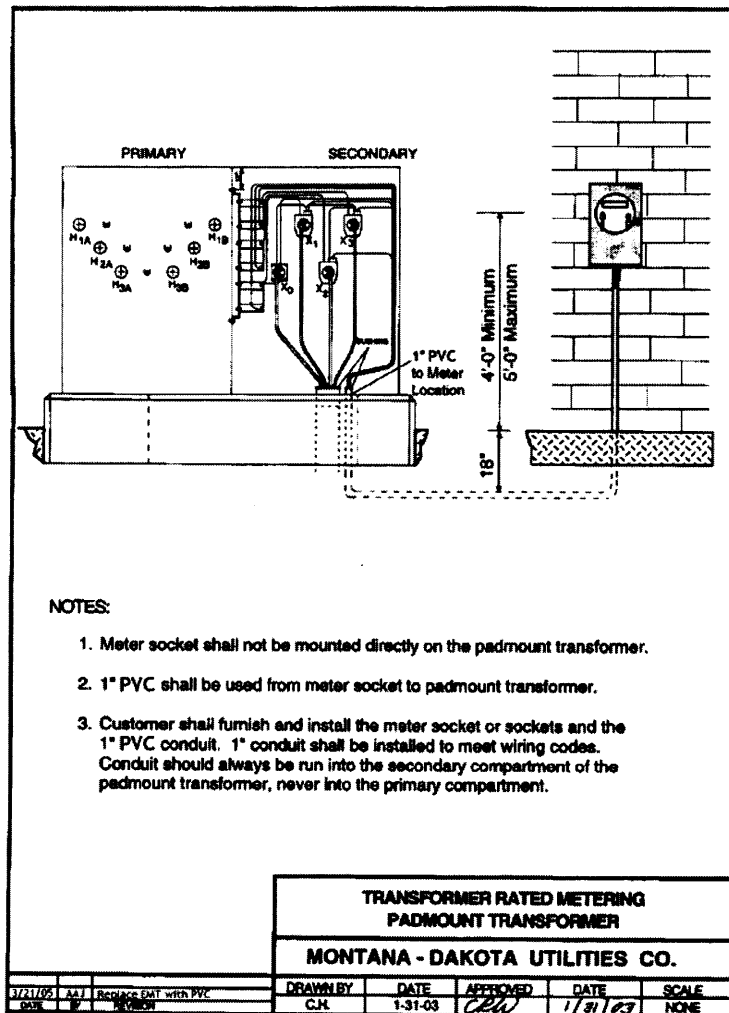


FIGURE 2

Date Filed: March 25, 2005

Effective Date: Service rendered on and
after September 7, 2005

Issued By: Donald R. Ball
Assistant Vice President
Regulatory Affairs

Case No.: PU-399-05-180



Montana-Dakota Utilities Co.

A Division of MDU Resources Group, Inc.

400 N 4th Street
Bismarck, ND 58501

State of North Dakota Electric Rate Schedule

NDPSC Volume 4
1st Revised Sheet No. 58.28
Canceling Original Sheet No. 58.28

TABLE OF CONTENTS ELECTRIC SERVICE RULES AND REGULATIONS Rate 110

Page 29 of 31

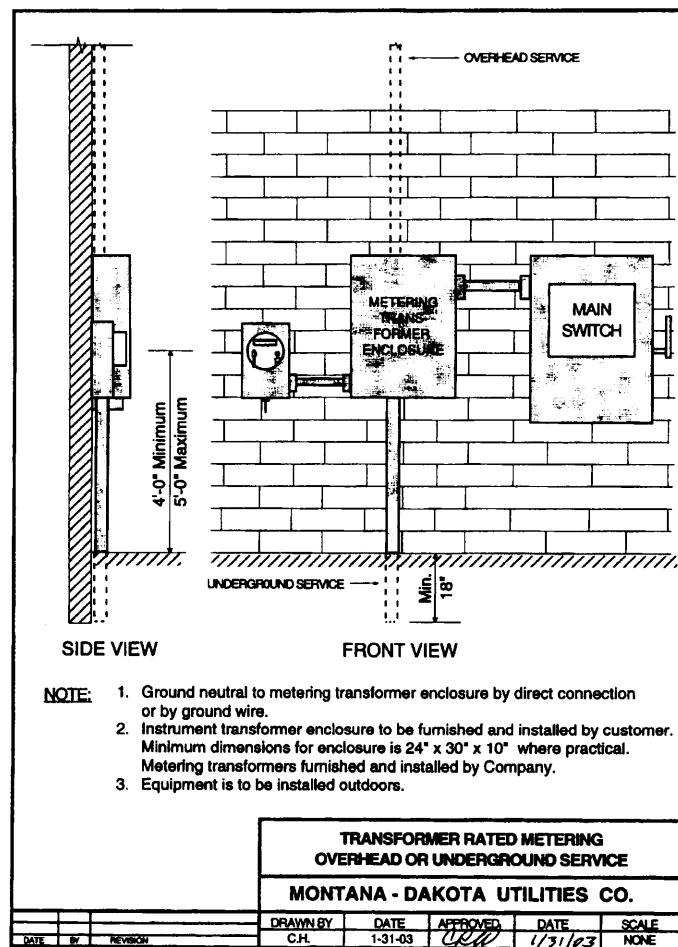


FIGURE 3

Date Filed: March 25, 2005

Effective Date: Service rendered on and after September 7, 2005

Issued By: Donald R. Ball
Assistant Vice President
Regulatory Affairs

Case No.: PU-399-05-180



Montana-Dakota Utilities Co.

A Division of MDU Resources Group, Inc.

400 N 4th Street
Bismarck, ND 58501

State of North Dakota Electric Rate Schedule

NDPSC Volume 4
1st Revised Sheet No. 58.29
Canceling Original Sheet No. 58.29

TABLE OF CONTENTS ELECTRIC SERVICE RULES AND REGULATIONS Rate 110

Page 30 of 31

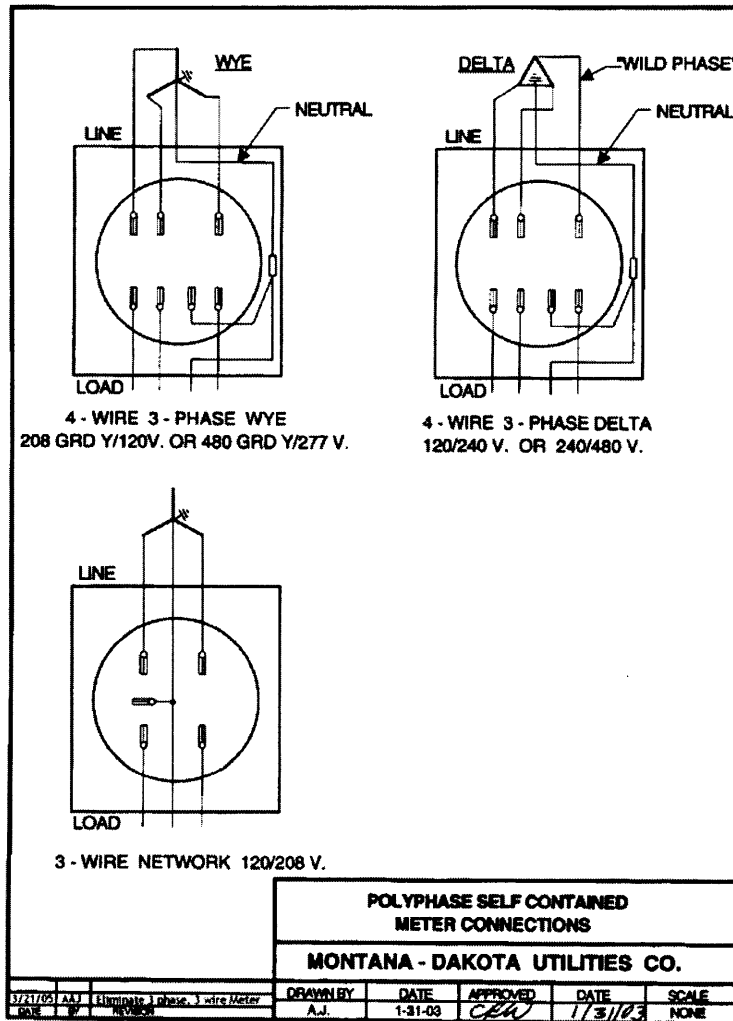


FIGURE 4

Date Filed: March 25, 2005

Effective Date: Service rendered on and after September 7, 2005

Issued By: Donald R. Ball
Assistant Vice President
Regulatory Affairs

Case No.: PU-399-05-180



Montana-Dakota Utilities Co.

A Division of MDU Resources Group, Inc.

400 N 4th Street
Bismarck, ND 58501

State of North Dakota Electric Rate Schedule

NDPSC Volume 4
1st Revised Sheet No. 58.30
Canceling Original Sheet No. 58.30

TABLE OF CONTENTS ELECTRIC SERVICE RULES AND REGULATIONS Rate 110

Page 31 of 31

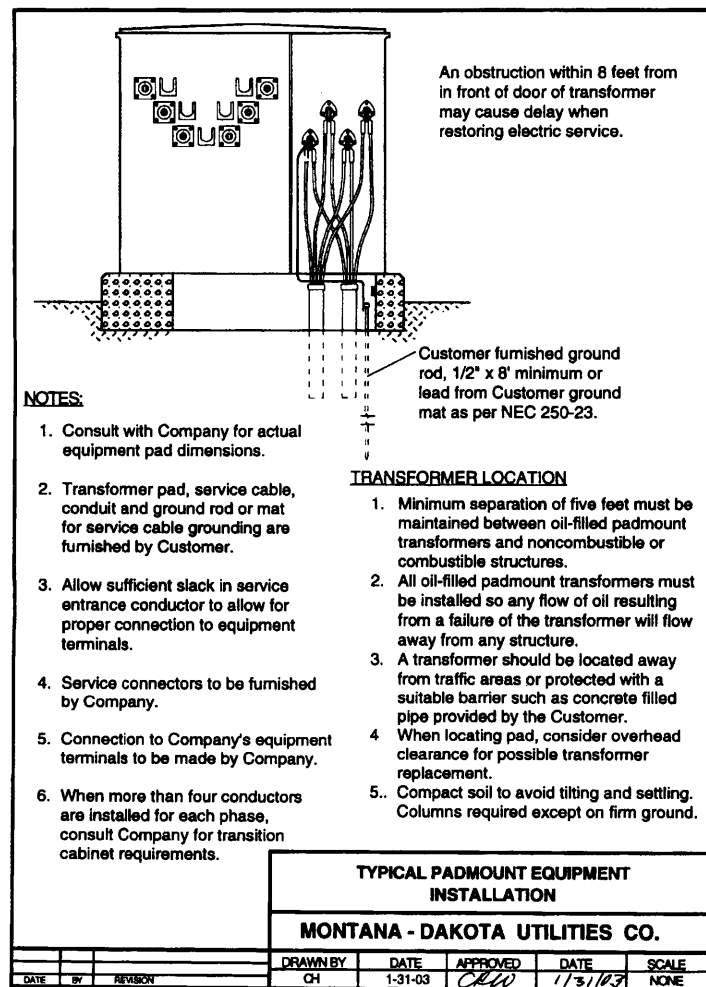


FIGURE 5

Date Filed: March 25, 2005

Effective Date: Service rendered on and after September 7, 2005

Issued By: Donald R. Ball
Assistant Vice President
Regulatory Affairs

Case No.: PU-399-05-180