

Reamann, Craig R.

From: Bob Bachmeier (701-628-9397) <Bob.Bachmeier@AuxSable.com>
Sent: Friday, November 18, 2016 12:24 PM
To: Reamann, Craig R.
Subject: RE: Aux Sable documentation for Case# GS-16-669
Attachments: RE: PSV-4302

Craig,

Attached is the response I got back about the document. Take a look and see if it will work or if we need to do something different.

Thanks,

Bob Bachmeier

Pipeline Regulatory Coordinator
Aux Sable Liquid Products
(701) 628-9397- Office
(701) 509-1626- Cell
Bob.Bachmeier@AuxSable.com

From: Reamann, Craig R. [<mailto:creamann@nd.gov>]
Sent: Friday, November 18, 2016 8:12 AM
To: Bob Bachmeier (701-628-9397)
Subject: RE: Aux Sable documentation for Case# GS-16-669

I copied this from the Schlumberger website:

Mscf/d

[English](#) | [Español](#)

1. n. [Production Testing]
Abbreviation for a thousand standard cubic feet per day, a common measure for volume of gas. Standard conditions are normally set at 60°F and 14.7 psia.
See: [thousand standard cubic feet per day](#)

Either way the units on the design and the required capacity need to be in sync.

Regards,

Craig Reamann

4 **GS-16-669** Filed: 11/18/2016 Pages: 3
Supplement response to Oct. 17, 2016 warning letter

From: Bob Bachmeier (701-628-9397) [<mailto:Bob.Bachmeier@AuxSable.com>]

Sent: Thursday, November 17, 2016 8:33 AM

To: Reamann, Craig R.

Subject: Aux Sable documentation for Case# GS-16-669

Craig,

Attached is what Novaspect Inc. sent back to our engineering department. Please let me know if you have any questions.

Thanks,

Bob Bachmeier

Pipeline Regulatory Coordinator

Aux Sable Liquid Products

(701) 628-9397- Office

(701) 509-1626- Cell

Bob.Bachmeier@AuxSable.com

From: paladminmfp@auxsable.com [<mailto:paladminmfp@auxsable.com>]

Sent: Thursday, November 17, 2016 7:27 AM

To: Bob Bachmeier (701-628-9397)

Subject: Attached Image

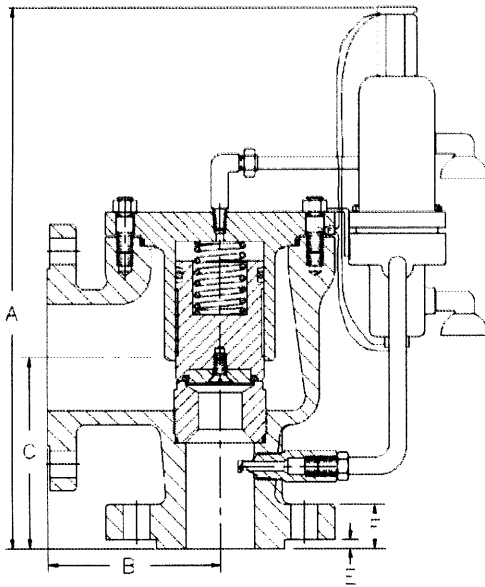
This transmission, email and any files transmitted with it, may be: (1) subject to the Attorney-Client Privilege, (2) an attorney work product, or (3) strictly confidential under federal or state law. If you are not the intended recipient of this message, you may not use, disclose, print, copy or disseminate this information. If you have received this transmission in error, notify the sender (only) and delete the message. This message may also be subject to disclosure under the North Dakota Open Records Laws.

Pressure Relief Valve Reference Drawing

Date Prepared: 2016-11-18 11:02

PSV Identification

Customer	Requisition #	Job #	Job Description	
Ambitech	150172004	DGR-42962	RFQ 150172004 PSV's (26)	
Tag #	Tag Description		P / ID	NACE
PSV-4302	Whiting&Plant Dischrge Pipelines		SP-PID-1404	No
ASME Code	Fluid State	Resolved ASME Area	Resolved API Area	Rupture Disk Coeff.
ASME Sec. VIII	Gas (Volume)	0.91964 in ²	0.82768 in ²	No Rupture Disk, 1
Operating Pressure	Set Pressure	Constant Back P.	Variable Back P.	Cold Diff. Test P.
1950 PSIG	2120 PSIG	1.5 PSIG	121.5 PSIG	2120 PSIG
Operating Temp.	Relief Temp.	Operating to Set %	Over Pressure	Percent Over P.
60 °F	102 °F	91.981 %	212 PSIG	10 %



Dimensions

Weight	Dim A	Dim B
195 lb	21 5/8 in	7 1/8 in
Dim C	Dim E	Dim F
7 1/2 in	1/4 in	2 1/4 in

Name Plate Capacity

Air	Water	Steam
7.609e+7 Sft ³ /day	-	-

38JC14X-16V/S4/SP

API Letter	API Area	ASME Area	
J	1.287 in ²	1.430 in ²	
	Size	Rating	Facing
Inlet:	3.00 in	900 #	RF
Outlet:	4.00 in	300 #	RF
Valve Design	Pilot Control		Test Gag
Pilot	HPCM High Pressure Modulating		No
Max. Rel. Cap.	React. Force	Noise	
9.330e+7 ft ³ /day	3039.3 lbs	119.75 dBa	

Materials

Body	316 SS (SA-351 Gr. CF8M)
Cover	316 ss
Nozzle	316 ss
Piston	316 ss
Spring	316 ss
Pilot	316 ss
O-Ring (SP)	Buna N

Tag Notes

- As agreed with Ambitech, "Built-Up Back Pressure" from the spec sheets was used as "Variable Back Pressure". Total Back Pressure is equal to Constant Back Pressure + Variable Back Pressure.
- Elastomer selected for Soft O-Ring Seat is standard Teflon material for Main Valve Seat and optional EPDM material for all other O-Rings. This is suitable for complete Design Temperature Range at given Set Pressure. However, it is up to the customer to approve elastomer in terms of chemical compatibility and suitability for the process media and application.
- Valve quoted with complete 316SS construction as confirmed with Ambitech.