

STATE OF NORTH DAKOTA
PUBLIC SERVICE COMMISSION

Targa Badlands LLC
8-Inch Crude Pipeline Project – McKenzie County
Siting Application

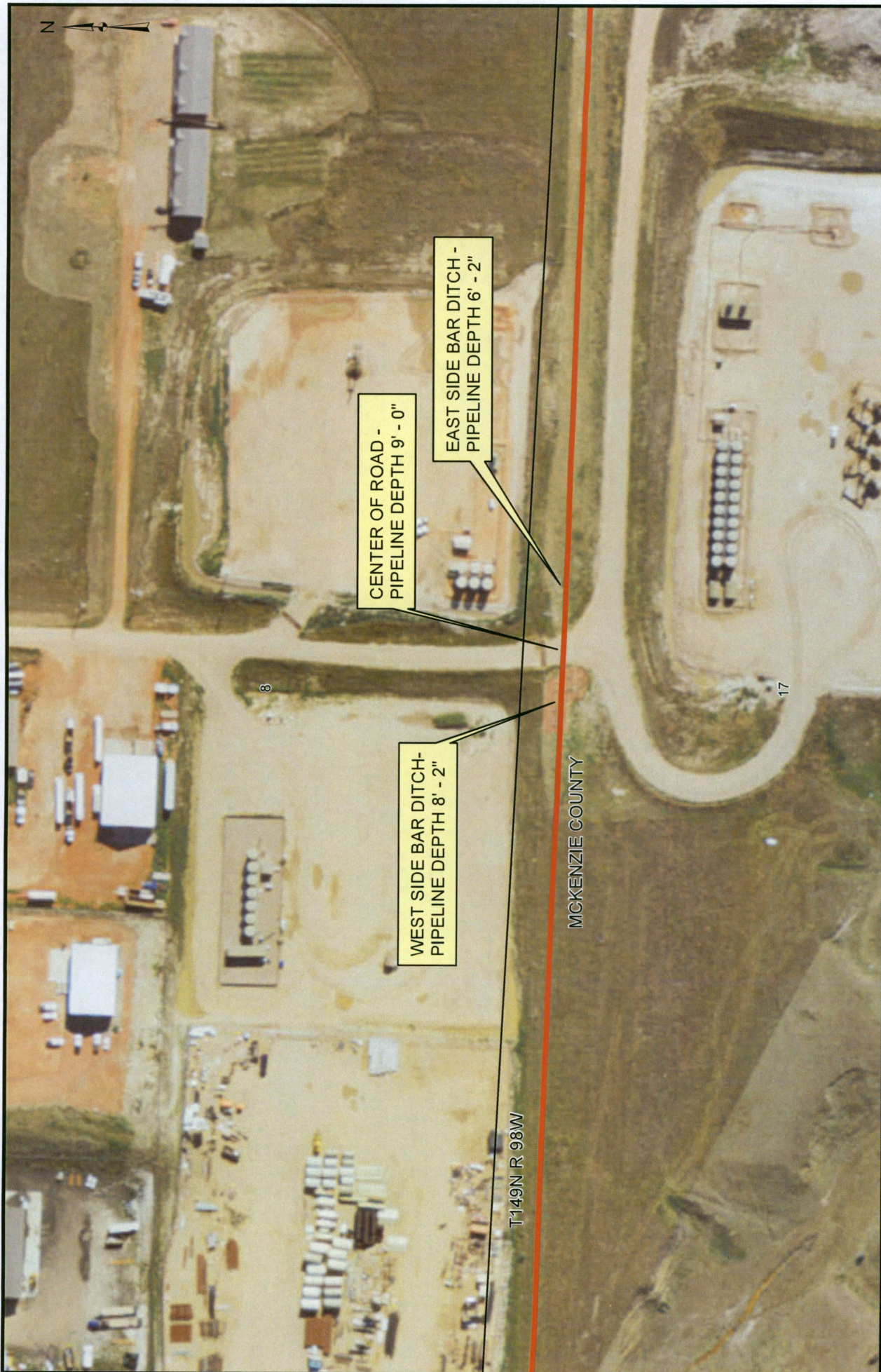
Case No. PU-16-695

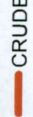


Late-Filed Exhibit 2
Private Road Crossing Information

The application of Targa Badlands LLC (“Targa”) for a certificate of corridor compatibility and route permit for the Johnsons Corner to Alexander Pipeline (the “Project”) contains information regarding various right-of-way crossings. *See* Hearing Exhibit 1, Application, Table 8A, at 30. One of the road crossing entries in Table 8A, located approximately 112,000 feet from Johnsons Corner, is for a private road built after installation of the pipeline. The North Dakota Public Service Commission (“Commission”) requested additional information regarding this private road, such as depth of cover and thickness of the pipe under the private road.

Targa has confirmed the depth of the Project under the private road, as depicted on the attached map. At this time, Targa does not have sufficient information to determine with certainty the thickness of pipe utilized in this area. However, there is no specific requirement for transmission pipelines to utilize a certain wall thickness of pipe under roads, and the depth of the Project under the road far exceeds the depth of cover requirement for road crossings to allow for adequate protection, i.e. 48 inches at the bottom of the ditch for road crossings (Hearing Exhibit 3, Certification Relating to Order Provisions, Transmission Facility Siting, Gathering Line Conversation to Transmission Line, Provision No. 10).

61151256_1.docx



 CRUDE	LEGEND		GRAPHIC SCALE 0 75 150  Feet		SCALE: 1" = 150' DWN BY: MGA CHKD BY: FINAL CK: ENG: APPRV: APPRV: PLANT NAME LITTLE MISSOURI		DATE 4/7/17				PROJECT NAME NDR00A27	
							DRAWING NUMBER 410-3400-A27		REVISION 0		TARGA BADLANDS LLC 8" SMOKEY TRUNK LINE ROAD CROSSING DEPTH OF COVER	