

Memorandum

Date: 7/10/2017
To: Tyler Newman, Savage Bakken Connector, Inc.
From: Corie Ereth, KLJ
RE: Tree & Shrub Mitigation Plan - Savage Bakken Connector, Inc.



Remarks

KLJ was contracted by Savage Bakken Connector, Inc. to complete a tree and shrub survey in compliance with the Tree and Shrub Mitigation Specifications incorporated into the North Dakota Public Service Commission's March 1, 2017 Recommended Findings of Fact, Conclusions of Law and Order granting a Certificate of Corridor Compatibility and Route Permit for the Savage Bakken Petroleum Hub Interconnect in Case No. PU-16-753.

The project is located in Sections 35 and 36 of T153N and R103W and Sections 5 and 6 of T152N and R103W, Williams County, North Dakota. The nearest town is Trenton, North Dakota.

A tree and shrub inventory was conducted within the project's study area in September 2016 to identify the number of trees and shrubs anticipated to be impacted by the project. A total of 143 trees consisting of 7 different species were identified in the southern grassland portion of the survey area (Section 6). Please refer to [Table 1, Tree Mitigation Numbers](#).

Environmental monitoring during topsoil removal was used to observe the number and species of trees removed. A total of 106 trees were recorded (by actual count) as removed during construction from the Environmental Monitor in March 2017. Green ash and eastern cottonwood were the only two species removed. These trees will be re-planted at a 2:1 ratio in accordance with the Commission's Tree and Shrub Mitigation Specifications.

Common Name	Scientific Name	Number Observed	Number Removed	2:1 Ratio for Re-Planting
Boxelder	<i>Acer negundo</i>	1	0	-
Peachleaf willow	<i>Salix amygdaloides</i>	2	0	-
Russian olive	<i>Elaeagnus angustifolia</i>	4	0	-
Chokecherry	<i>Prunus virginiana</i>	9	0	-
Siberian elm	<i>Ulmus pumila</i>	9	0	-
Green ash	<i>Fraxinus pennsylvanica</i>	26	14	28
Eastern cottonwood	<i>Populus deltoides</i>	92	92	184
Total		143	106	212

Table 1, Tree Mitigation Numbers

The trees are scheduled to be re-planted in the spring of 2018 within the study area. Please refer to [Figure 1, Tree Mitigation Map](#) for the locations of tree removal and proposed tree mitigation area. In accordance with the Commission’s Tree and Shrub Mitigation Plan, Savage will complete an annual inspection in September for three years, with the first inspection at least one year from the planting date. An annual report will be submitted to the Commission by October 1 of each year documenting the survival rate.

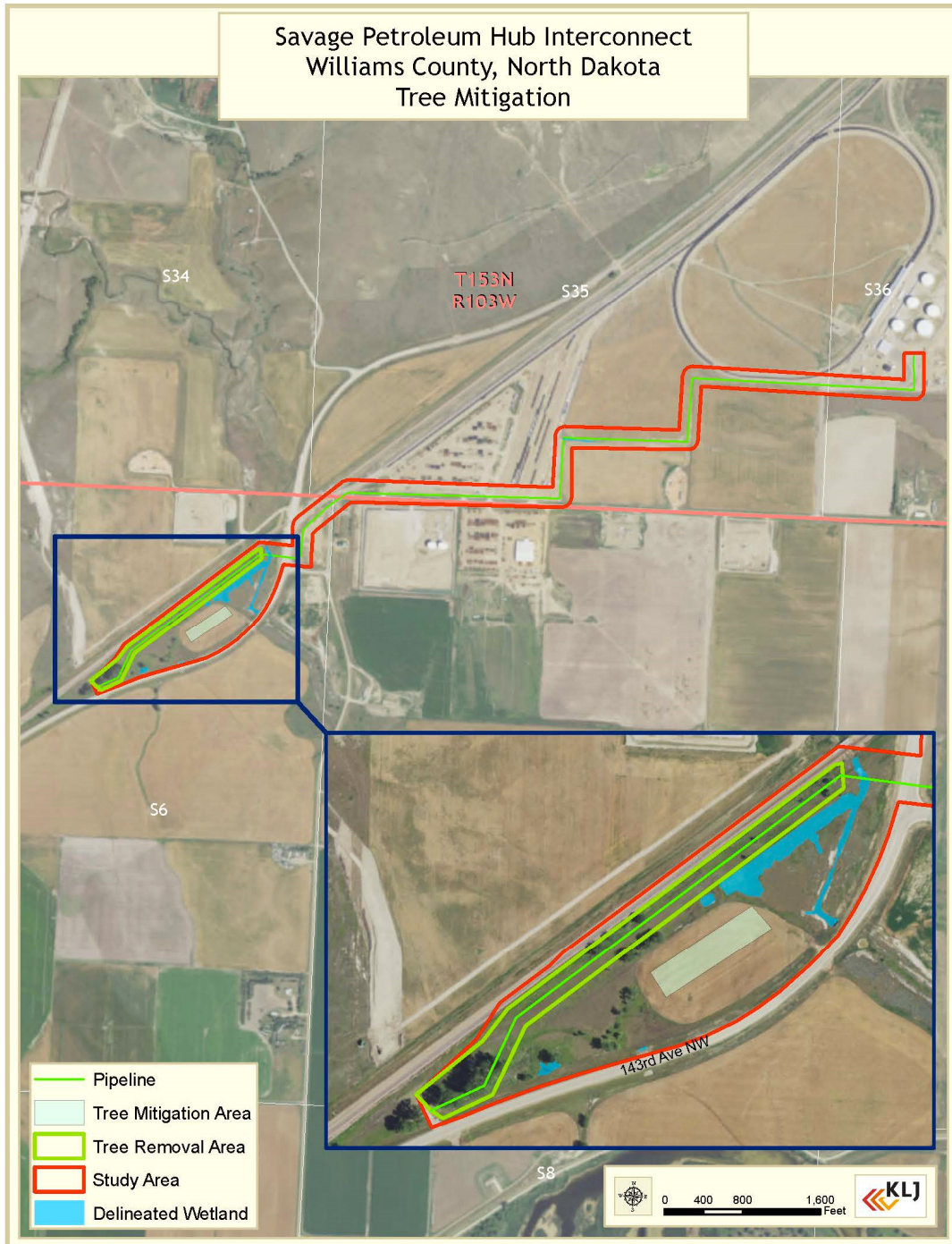


Figure 1, Tree Mitigation Map