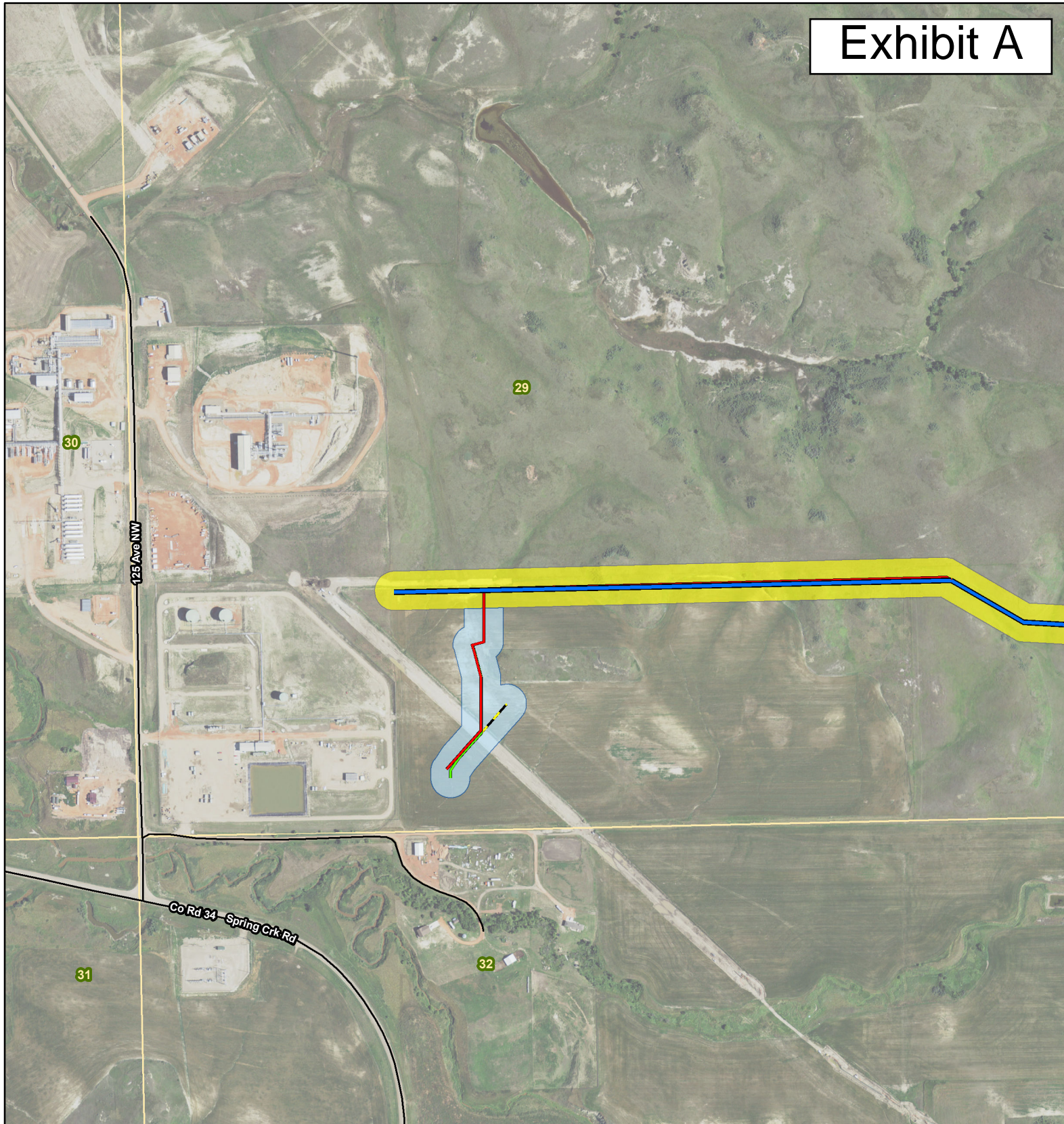










Exhibit A



Legend

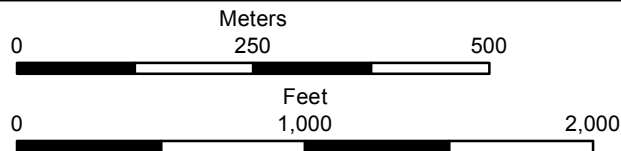
-  Approved Residue Pipeline
-  Proposed Residue 8-inch Pipeline Reroute
-  Proposed Residue 10-inch Pipeline Reroute
-  Proposed Pull Back
-  Existing Road
-  Designated Corridor
-  Proposed Amended Corridor
-  Section Boundary



116 North 4th Street
Suite 200
Bismarck, ND 58501

Phone: 701.258.6622
Fax: 701.258.5957

www.swca.com



Base Map: 2016 Aerial Imagery
Source: USDA/FSA - Aerial Photography Field Office
Quadrangle: Teepee Buttes (1995)
Township/Range: T. 149N, R. 98W
McKenzie County, North Dakota

Projection: NAD 1983 UTM Zone 13N

