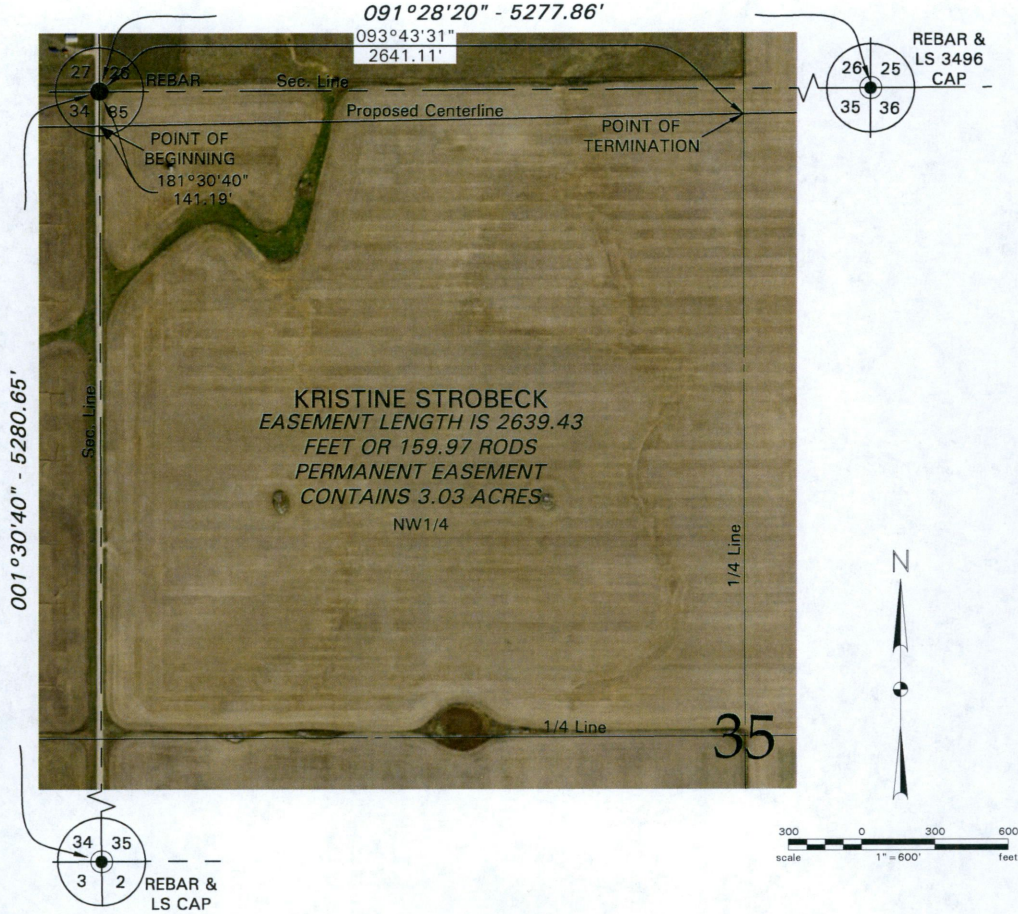
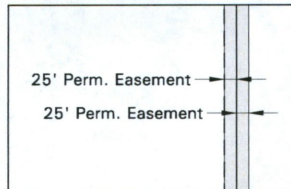


**CENEX PIPELINE LLC**  
 NW1/4 OF SEC. 35, T.155N, R.92W.  
 OF THE 5TH PRINCIPAL MERIDIAN, MOUNTRAIL COUNTY, NORTH DAKOTA  
 EXHIBIT "A"



**KRISTINE STROBECK**  
 EASEMENT LENGTH IS 2639.43  
 FEET OR 159.97 RODS  
 PERMANENT EASEMENT  
 CONTAINS 3.03 ACRES  
 NW1/4

PI #	DIRECTION	DISTANCE
S. Line	090°39'41"	2639.43'
1/4 Line		



**NOTE:**  
 Survey is based on North Dakota State Plane System, NAD83 (Conus), North Zone, International Foot. Azimuths shown are grid azimuths, distances shown are grid distance. Multiply by 1.0001634 to go from grid distance to ground distance.

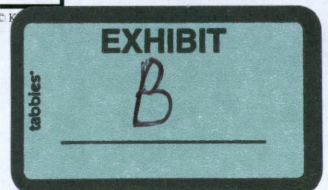
FIELD BOOK: OP-424, Bk 1, Pgs. 1-79; OP-426 Bk 3, Pgs. 1-50, 51-77; OP-436, Pgs. 1-44; OP-436, Pgs.53-80; OP-438, Pgs. 1-14

		<b>CENEX PIPELINE LLC</b> <b>KRISTINE STROBECK</b>	DWSG NO 1716101_Easement_Mountrail
		PROPOSED EASEMENT ON AND ACROSS THE NW1/4 OF SEC. 35, T.155N, R.92W.	JOB NO 1716101
DRAWN BY M. Pitkin	DATE 11/7/2016		SHEET <b>1 of 2</b>

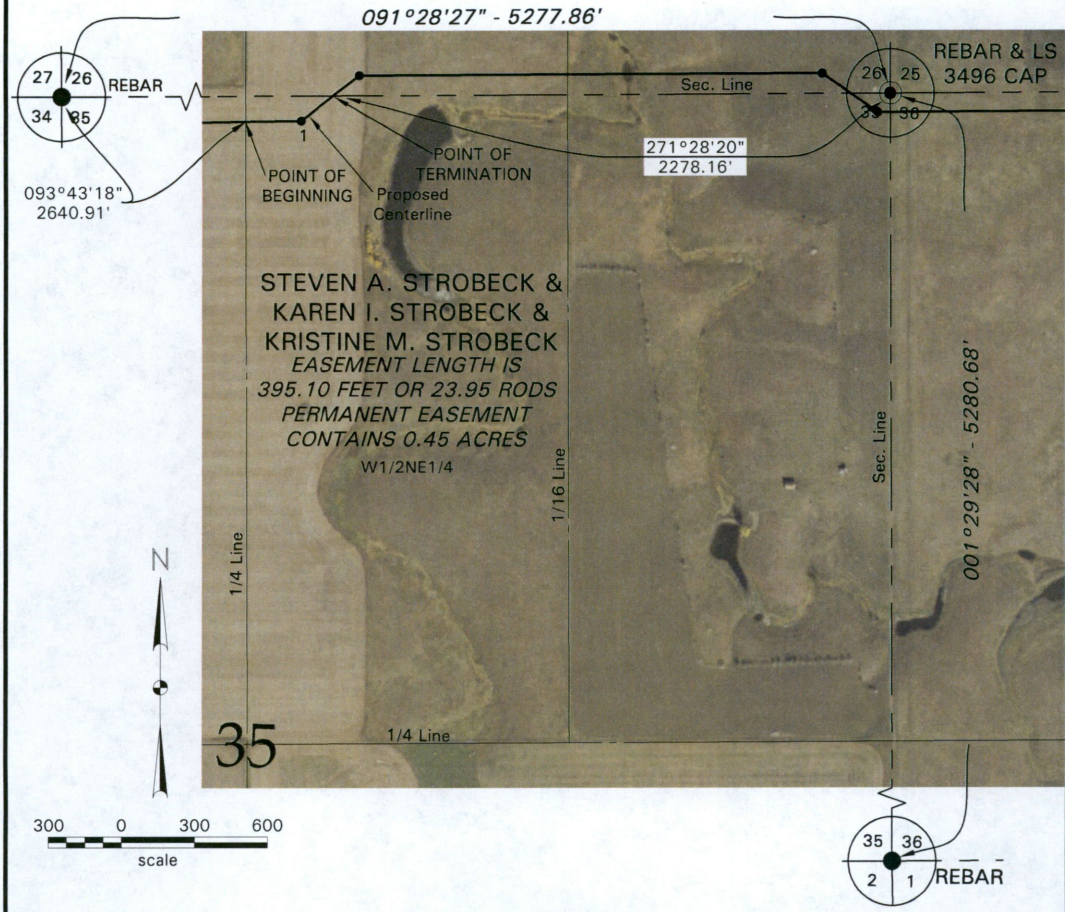
Jan 25, 2017 - 10:58 AM - \\dksn-files01\PI\O\CH

**77 PU-17-97** Filed: 7/25/2017 Pages: 3  
**Exhibit B - Landowner Strombeck Map**

Cenex Pipeline, LLC

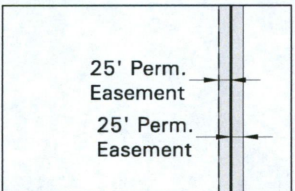


**CENEX PIPELINE LLC**  
 W1/2NE1/4 OF SEC. 35, T.155N, R.92W.  
 OF THE 5TH PRINCIPAL MERIDIAN, MOUNTTRAIL COUNTY, NORTH DAKOTA  
 EXHIBIT "A"



STEVEN A. STROBECK &  
 KAREN I. STROBECK &  
 KRISTINE M. STROBECK  
 EASEMENT LENGTH IS  
 395.10 FEET OR 23.95 RODS  
 PERMANENT EASEMENT  
 CONTAINS 0.45 ACRES  
 W1/2NE1/4

PI #	DIRECTION	DISTANCE
1/4 Line	090°52'18"	228.36'
1	054°04'37"	166.74'
S. Line		

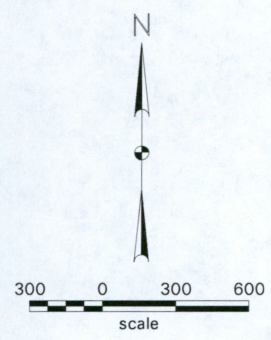
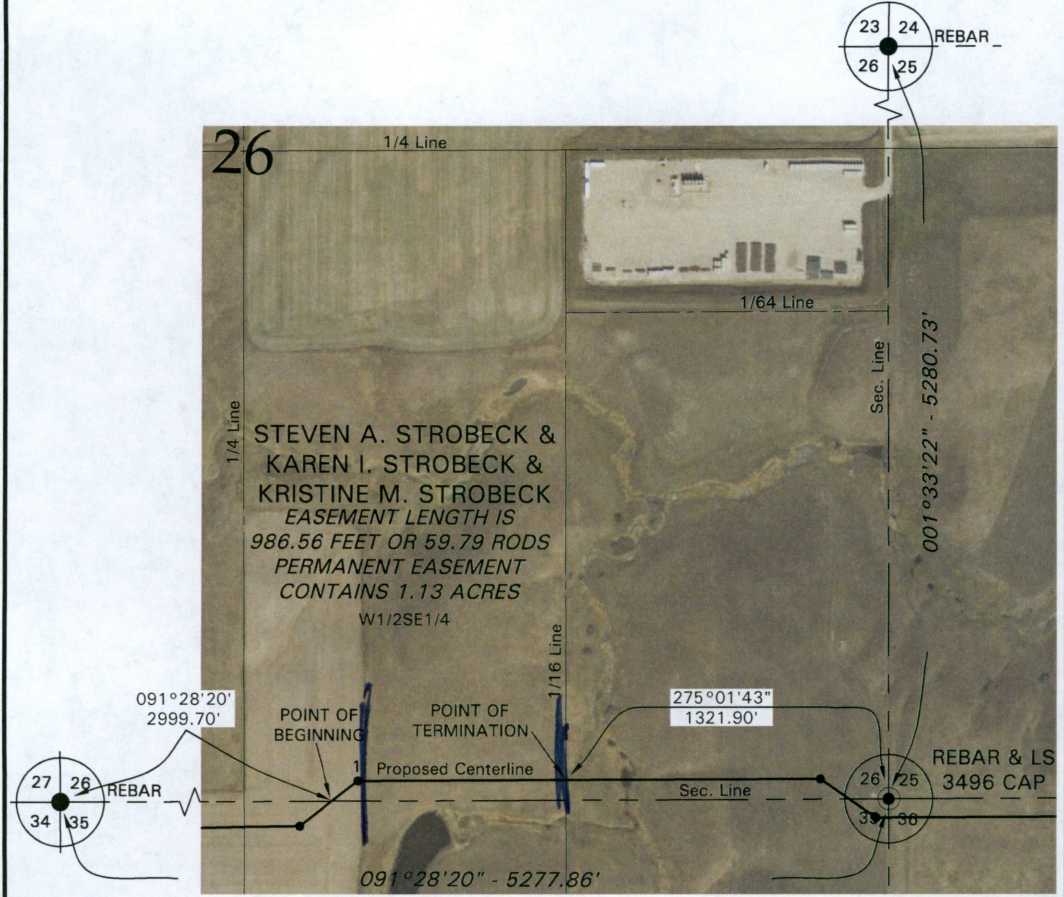


**NOTE:**  
 Survey is based on North Dakota State Plane System, NAD83 (Conus), North Zone, International Foot. Azimuths shown are grid azimuths, distances shown are grid distance. Multiply by 1.0001634 to go from grid distance to ground distance.

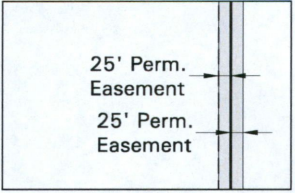
FIELD BOOK: OP-424, Bk 1, Pgs. 1-79; OP-426 Bk 3, Pgs. 1-50, 51-77; OP-436, Pgs. 1-44; OP-436, Pgs. 53-80; OP-438, Pgs. 1-14

		<b>CENEX PIPELINE LLC</b> <b>STEVEN A. STROBECK &amp;</b> <b>KAREN I. STROBECK &amp; KRISTINE M. STROBECK</b>	DWG NO 1716101_Easement_Mounttrail
		PROPOSED EASEMENT ON AND ACROSS THE W1/2NE1/4 OF SEC. 35, T.155N, R.92W.	JOB NO 1716101
DRAWN BY M. Pitkin	DATE 11/7/2016	REV 05/25/2017 CF	SHEET <b>1 of 2</b>

**CENEX PIPELINE LLC**  
 W1/2SE1/4 OF SEC. 26, T.155N, R.92W.  
 OF THE 5TH PRINCIPAL MERIDIAN, MOUNTRAIL COUNTY, NORTH DAKOTA  
 EXHIBIT "A"



PI #	DIRECTION	DISTANCE
S. Line	054°04'37"	135.02'
1	091°28'20"	851.54'
1/16 Line		



*TYPICAL EASEMENT*  
SCALE: 1"=300'

**NOTE:**  
 Survey is based on North Dakota State Plane System, NAD83 (Conus), North Zone, International Foot. Azimuths shown are grid azimuths, distances shown are grid distance. Multiply by 1.0001634 to go from grid distance to ground distance.

FIELD BOOK: OP-424, Bk 1, Pgs. 1-79; OP-426 Bk 3, Pgs. 1-50, 51-77; OP-436, Pgs. 1-44; OP-436, Pgs.53-80; OP-438, Pgs. 1-14

		<b>CENEX PIPELINE LLC</b>		DWG NO. 1716101_Easement_Mountrail
		STEVEN A. STROBECK & KAREN I. STROBECK & KRISTINE M. STROBECK		JOB NO. 1716101
DRAWN BY: M. Pitkin		DATE: 11/7/2016		SHEET <b>1 of 2</b>