

Shayna Wiede

From: Sheldon Smith
Sent: Wednesday, July 26, 2017 8:21 AM
To: Shayna Wiede
Subject: FW: FW: Strobeck
Attachments: ND Exhibit Mountrail-Aerial1.pdf; ND Exhibit Mountrail-Aerial.pdf

Sheldon A. Smith



122 East Broadway
Box 460
Bismarck ND 58502
Office 701.258.0630
Fax 701.258.6498
Direct Dial 701.751.5260

ssmith@smithporsborg.com

This e-mail, including attachments, is covered by the Electronic Communications Privacy Act, 18 U.S.C. 2510 et seq., is confidential, and/or is legally privileged. It is intended for use only by the person to whom it is directed. If you are not the intended recipient and/or received it in error, you should (1) reply by e-mail to the sender; (2) delete this e-mail, including deletion of all associated text files from all storage locations including individual and network storage devices; and (3) refrain from disseminating or copying this communication. Thank you.

From: Sheldon Smith
Sent: Tuesday, July 25, 2017 10:10 AM
To: tjdawson@nd.gov
Subject: Fwd: FW: Strobeck

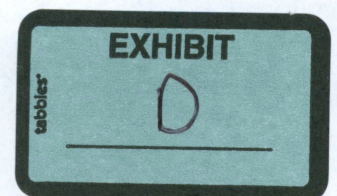
Sent from my Verizon 4G LTE Droid

----- Forwarded message -----

From: Sheldon Smith <[SSmith@smithporsborg.com](mailto:ssmith@smithporsborg.com)>
Date: 25 Jul 2017 9:14 am
Subject: FW: Strobeck

79 PU-17-97 Filed: 7/25/2017 Pages: 6
Late filed Exhibit D - 5-27-2017 Email from Nikki Meyer to Attorney for Strombeck - reroute proposal

Cenex Pipeline, LLC



To: Sheldon Smith <SSmith@smithporsborg.com>
Cc: Rachel DeRung <RDeRung@smithporsborg.com>

Sheldon A. Smith



122 East Broadway
Box 460
Bismarck ND 58502
Office 701.258.0630
Fax 701.258.6498
Direct Dial 701.751.5260

ssmith@smithporsborg.com

This e-mail, including attachments, is covered by the Electronic Communications Privacy Act, 18 U.S.C. 2510 et seq., is confidential, and/or is legally privileged. It is intended for use only by the person to whom it is directed. If you are not the intended recipient and/or received it in error, you should (1) reply by e-mail to the sender; (2) delete this e-mail, including deletion of all associated text files from all storage locations including individual and network storage devices; and (3) refrain from disseminating or copying this communication. Thank you.

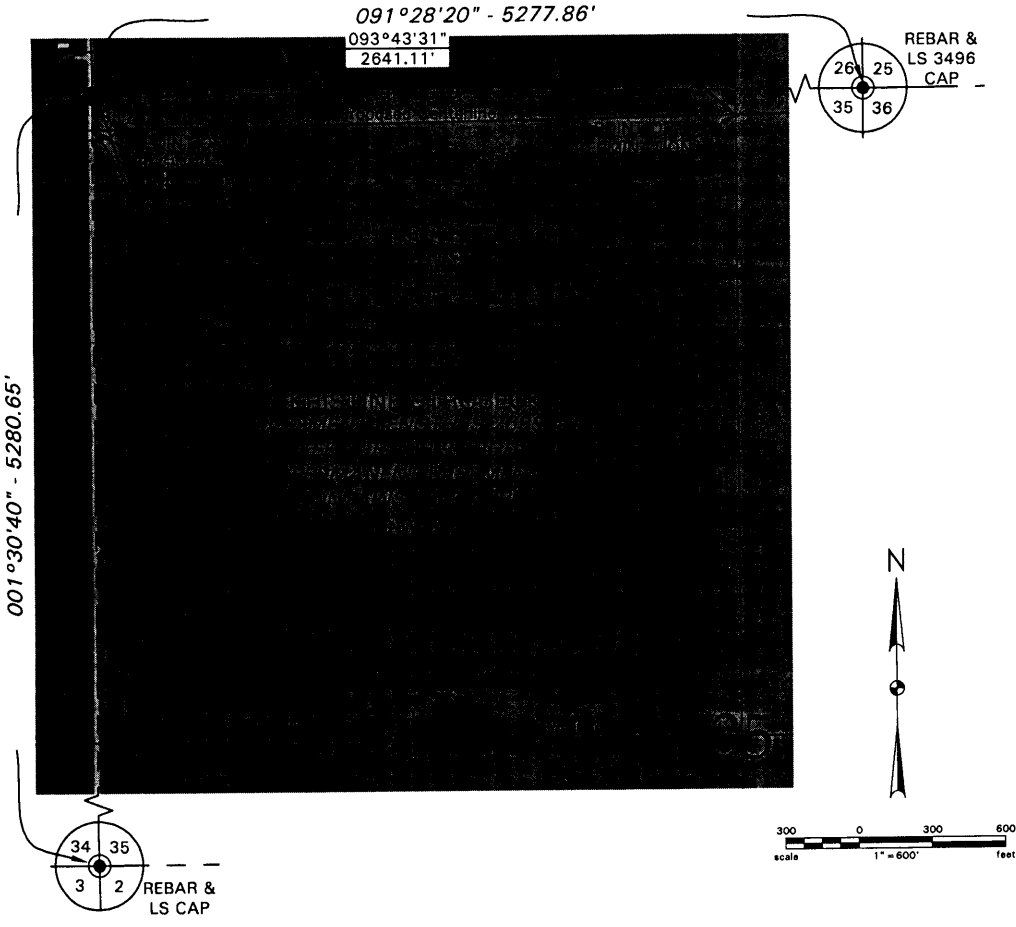
From: Nici Meyer [<mailto:nici.meyer@kljeng.com>]
Sent: Tuesday, June 27, 2017 11:01 AM
To: Sheldon Smith <SSmith@smithporsborg.com>
Subject: Strobeck

Sheldon,

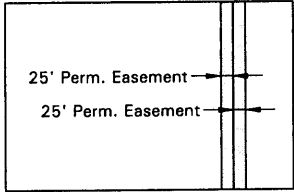
The first attachment is the one in which there is a change on pages 2 and 3 after the quarter line is crossed in section 35. No other changes have been made. I have also attached the exhibit for the parcel that Kristine solely owns. No changes to this exhibit have been made.

Nici

CENEX PIPELINE LLC
 NW1/4 OF SEC. 35, T.155N, R.92W.
 OF THE 5TH PRINCIPAL MERIDIAN, MOUNTRAIL COUNTY, NORTH DAKOTA
 EXHIBIT "A"



PI #	DIRECTION	DISTANCE
S. Line	090°39'41"	2639.43'
1/4 Line		



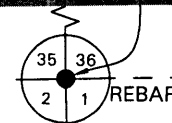
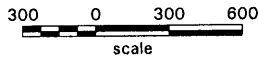
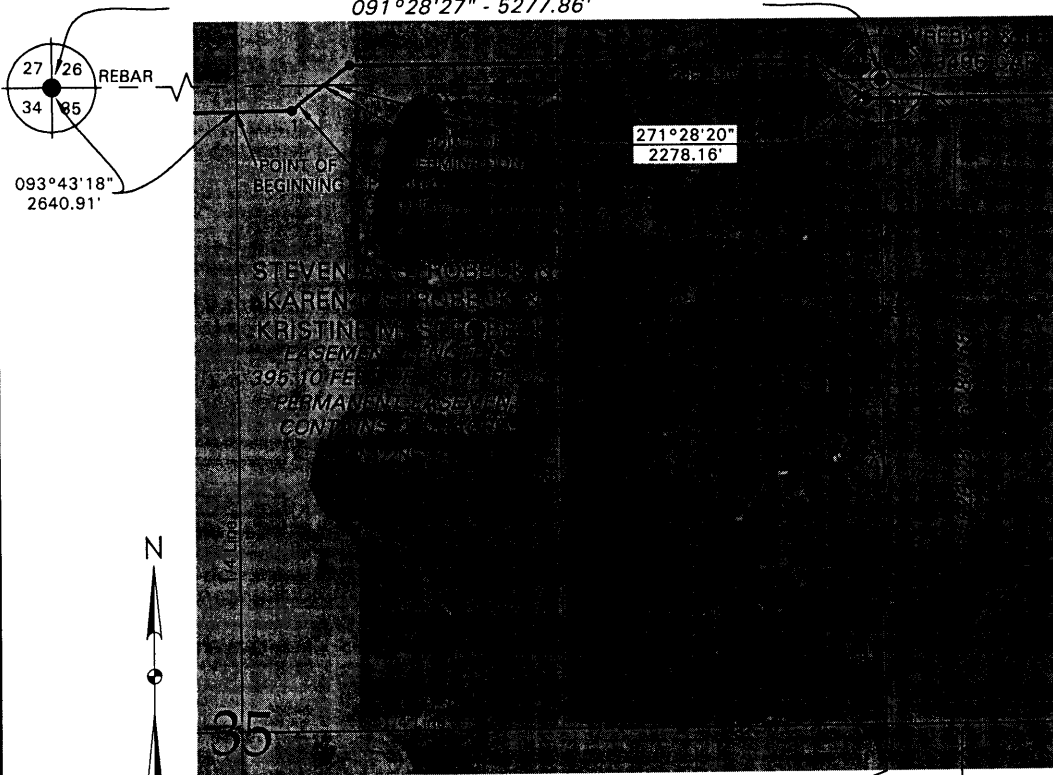
NOTE:
 Survey is based on North Dakota State Plane System, NAD83 (Conus), North Zone, International Foot. Azimuths shown are grid azimuths, distances shown are grid distance. Multiply by 1.0001634 to go from grid distance to ground distance.

FIELD BOOK: OP-424, Bk 1, Pgs. 1-79; OP-426 Bk 3, Pgs. 1-50, 51-77; OP-436, Pgs. 1-44; OP-436, Pgs. 53-80; OP-438, Pgs. 1-14

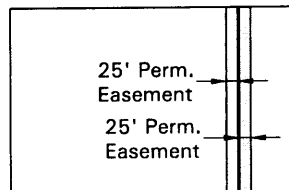
		CENEX PIPELINE LLC KRISTINE STROBECK	DWG NO. 1716101_Easement_Mountrail
		PROPOSED EASEMENT ON AND ACROSS THE NW1/4 OF SEC. 35, T.155N, R.92W.	JOB NO. 1716101
DRAWN BY M. Pitkin	DATE 11/7/2016	REV	SHEET 1 of 2

CENEX PIPELINE LLC
W1/2NE1/4 OF SEC. 35, T.155N, R.92W.
OF THE 5TH PRINCIPAL MERIDIAN, MOUNTRAIL COUNTY, NORTH DAKOTA
EXHIBIT "A"

091°28'27" - 5277.86'



PI #	DIRECTION	DISTANCE
1/4 Line	090°52'18"	228.36'
1	054°04'37"	166.74'
S. Line		



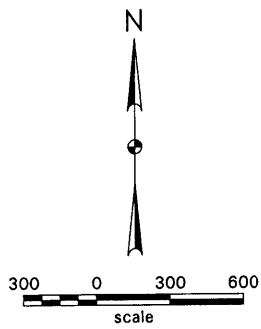
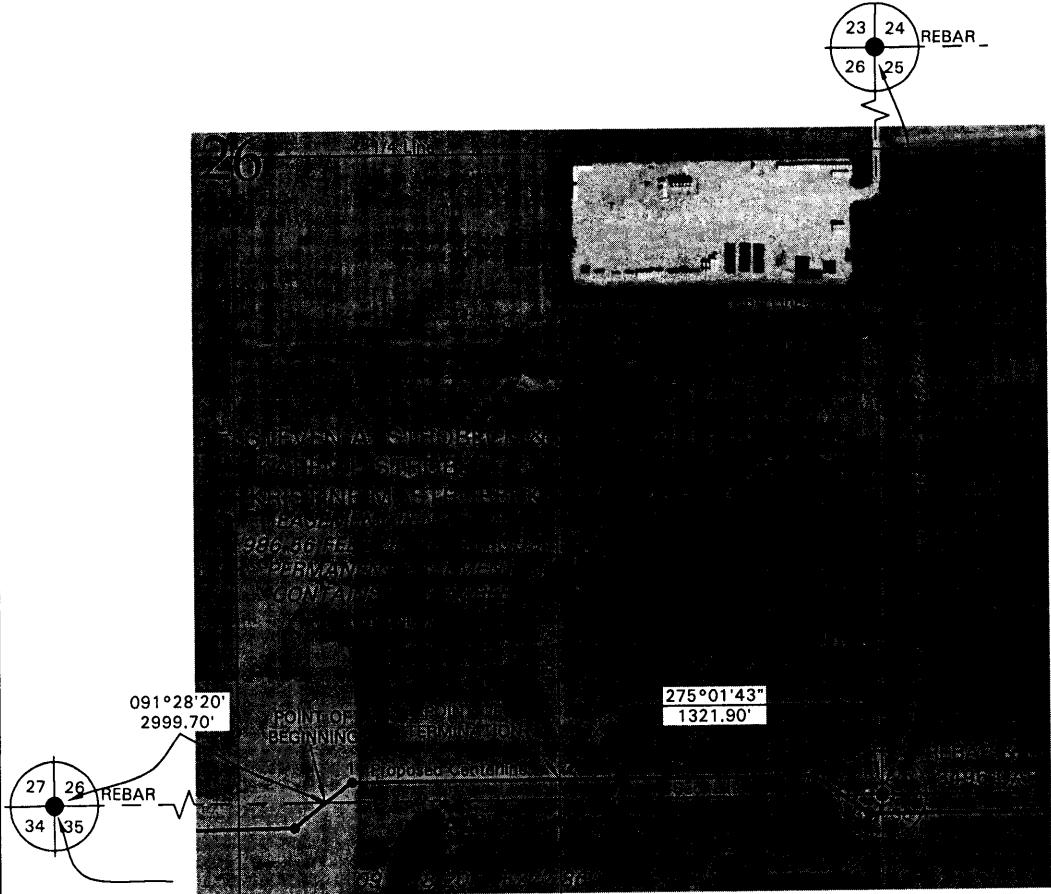
TYPICAL EASEMENT
SCALE: 1"=300'

NOTE:
Survey is based on North Dakota State Plane System, NAD83 (Conus), North Zone, International Foot. Azimuths shown are grid azimuths, distances shown are grid distance. Multiply by 1.0001634 to go from grid distance to ground distance.

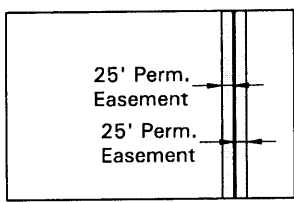
FIELD BOOK: OP-424, Bk 1, Pgs. 1-79; OP-426 Bk 3, Pgs. 1-50, 51-77; OP-436, Pgs. 1-44; OP-436, Pgs.53-80; OP-438, Pgs. 1-14

		CENEX PIPELINE LLC STEVEN A. STROBECK & KAREN I. STROBECK & KRISTINE M. STROBECK	DWG NO. 1716101_Easement_Mountrail
		PROPOSED EASEMENT ON AND ACROSS THE W1/2NE1/4 OF SEC. 35, T.155N, R.92W.	JOB NO. 1716101
DRAWN BY M. Pitkin	DATE 11/7/2016	REV 05/25/2017 CF	SHEET 1 of 2

CENEX PIPELINE LLC
 W1/2SE1/4 OF SEC. 26, T.155N, R.92W.
 OF THE 5TH PRINCIPAL MERIDIAN, MOUNTRAIL COUNTY, NORTH DAKOTA
 EXHIBIT "A"



PI #	DIRECTION	DISTANCE
S. Line	054°04'37"	135.02'
1	091°28'20"	851.54'
1/16 Line		



TYPICAL EASEMENT
 SCALE: 1"=300'

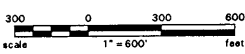
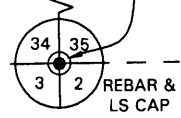
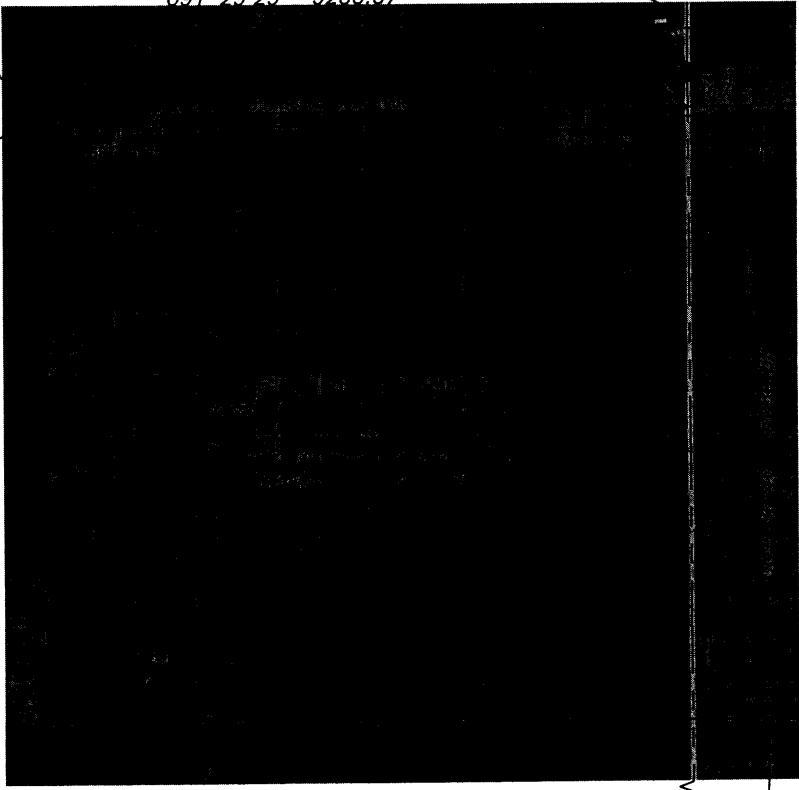
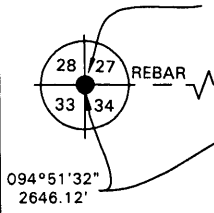
NOTE:
 Survey is based on North Dakota State Plane System, NAD83 (Conus), North Zone, International Foot. Azimuths shown are grid azimuths, distances shown are grid distance. Multiply by 1.0001634 to go from grid distance to ground distance.

FIELD BOOK: OP-424, Bk 1, Pgs. 1-79; OP-426 Bk 3, Pgs. 1-50, 51-77; OP-436, Pgs. 1-44; OP-436, Pgs.53-80; OP-438, Pgs. 1-14

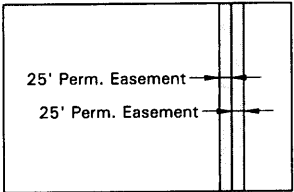
		CENEX PIPELINE LLC STEVEN A. STROBECK & KAREN I. STROBECK & KRISTINE M. STROBECK	DWG NO. 1716101_Easement_Mountrail
		PROPOSED EASEMENT ON AND ACROSS THE W1/2SE1/4 OF SEC. 26, T.155N, R.92W.	JOB NO. 1716101
DRAWN BY M. Pitkin	DATE 11/7/2016	REV	SHEET 1 of 2

CENEX PIPELINE LLC
 NE1/4 OF SEC. 34, T.155N, R.92W.
 OF THE 5TH PRINCIPAL MERIDIAN, MOUNTRAIL COUNTY, NORTH DAKOTA
 EXHIBIT "A"

091°29'29" - 5283.37'



PI #	DIRECTION	DISTANCE
1/4 Line	091°10'43"	2641.61'
S. Line		



NOTE:
 Survey is based on North Dakota State Plane System, NAD83 (Conus), North Zone, International Foot. Azimuths shown are grid azimuths, distances shown are grid distance. Multiply by 1.0001634 to go from grid distance to ground distance.

FIELD BOOK: OP-424, Bk 1, Pgs. 1-79; OP-426 Bk 3, Pgs. 1-50, 51-77; OP-436, Pgs. 1-44; OP-436, Pgs. 53-80; OP-438, Pgs. 1-14

		CENEX PIPELINE LLC KRISTINE STROBECK	DWG NO. 1716101_Easement_Mountrail
		PROPOSED EASEMENT ON AND ACROSS THE NE1/4 OF SEC. 34, T.155N, R.92W.	JOB NO. 1716101
DRAWN BY M. Pitkin	DATE 11/7/2016	REV.	SHEET 1 of 2