



414 Nicollet Mall
Minneapolis, MN 55401

October 30, 2017

Darrell Nitschke
Executive Secretary
North Dakota Public Service Commission
Department 408
600 East Boulevard
Bismarck, ND 58505-0480

**Re: Monthly Status Report
Submittal of SHPO concurrence with final cultural resource survey
Notification of Alignment change of 115kV connection at Magic City Substation
Northern States Power Company
230 kV Transmission Line - McHenry & Ward Counties
Case No. PU-17-102**

Dear Mr. Nitschke:

On behalf of Northern States Power Company, doing business as Xcel Energy, enclosed for filing with the North Dakota Public Service Commission in the above referenced case, please find the following items:

1. Monthly Project Update
2. Copy of SHPO concurrence with final cultural resource survey
All previously un-surveyed areas in the project corridor have been surveyed.
Survey reports were submitted to SHPO October, 2017.
3. Notification of alignment change of the 115kV line at north end of project.
While not under PSC siting authority, the 115kV connection was described in the permit application. The attached map shows a new alignment that was modified from that shown in the permit application. The modified alignment is shorter and was developed with input from the landowner who is supportive of the new alignment.

Please feel free to contact me at (612) 330 5835 if you have questions.

Sincerely,


A handwritten signature in black ink, appearing to read 'Tom Hillstrom'.

Tom Hillstrom

Enclosures

cc: J. Lein

Monthly Report

Case #: PU-17-102 Project: 230 kV Transmission Line, McHenry and Ward Counties Month Ending: October 31, 2017 Project Contacts:					
Title	Name	Company	Office Phone	Cell Phone	e-mail
Permit Manager	Tom Hillstrom	Xcel Energy	612-330-5835	612-584-8783	Thomas.hillstrom@xcelenergy.com
Project Manager	Joe Samuel	Xcel Energy	612-337-2338	651-295-3253	Joseph.M.Samuel@xcelenergy.com
Land Agent	Sean Lawler	Xcel Energy	612-330-1956	320-247-0309	Sean.W.Lawler@xcelenergy.com

Safety Issues
None
Environmental Issues
None
Landowner / Public Issues
<p>On October 23rd while working at Structure 161, a 2 inch plastic water supply pipe was damaged by the auger. Utility locates were performed at this location prior to drilling in accordance with North Dakota's Call-Before-You-Dig Law (North Dakota Century Code Chapter 49-23). However, no water pipe was marked, identified or represented in any way of being present in the area. Xcel worked with North Prairie Rural Water to repair the damaged water pipe. The landowner is not in favor of moving the structure location so we are working with the water utility to relocate the water line. Notice of this event was given to NDPS staff by voicemail on October 23rd.</p>
Project Modification Requests
New alignment of 115kV connection at Magic City. Explanation in cover letter.
Construction Progress
Grading at Magic City Substation - 90 % complete Grading at McHenry Substation - 100% complete Line Foundation Installation - 10 % complete
Look Ahead
Finish Grading at Magic Substation – Estimate finish mid-Nov 2017 Continue foundation work Begin installing Structures May 2018
Comments



**STATE
HISTORICAL
SOCIETY
OF NORTH DAKOTA**

COPY

Doug Burgum
Governor of North Dakota

North Dakota
State Historical Board

Terrance Rockstad
Bismarck - President

Gereld Gerntholz
Valley City - Vice President

H. Patrick Weir
Medora - Secretary

Calvin Grinnell
New Town

Albert I. Berger
Grand Forks

Steve C. Martens
Fargo

Daniel Stenberg
Watford City

Sara Otte Coleman
*Director
Tourism Division*

Kelly Schmidt
State Treasurer

Alvin A. Jaeger
Secretary of State

Melissa Baker
Director

Parks and Recreation Department

Thomas Sorel
*Interim Director
Department of Transportation*

Claudia J. Berg
Director

*Accredited by the
American Alliance
of Museums since 1986*

October 24, 2017

Ms. Damita Engel
Regional Manager
Metcalf Archaeological Consultants
PO Box 2154
Bismarck ND 58502

ND SHPO Ref: 18-0074 PSC "Addendum to Xcel Energy 230kV Transmission Line: A Class III Cultural Resource Inventory in Ward and McHenry Counties, North Dakota"

Dear Ms. Engel,

We reviewed ND SHPO Ref: 18-0074 PSC "Addendum to Xcel Energy 230kV Transmission Line: A Class III Cultural Resource Inventory in Ward and McHenry Counties, North Dakota," and find the report acceptable. There has been a good faith effort to identify and avoid impacts to "Significant Sites," provided the project remains as described and mapped in this report dated October 2017.

Thank you for the opportunity to review this project. If you have questions please contact or Susan Quinnell at squinnell@nd.gov or (701) 328-3576.

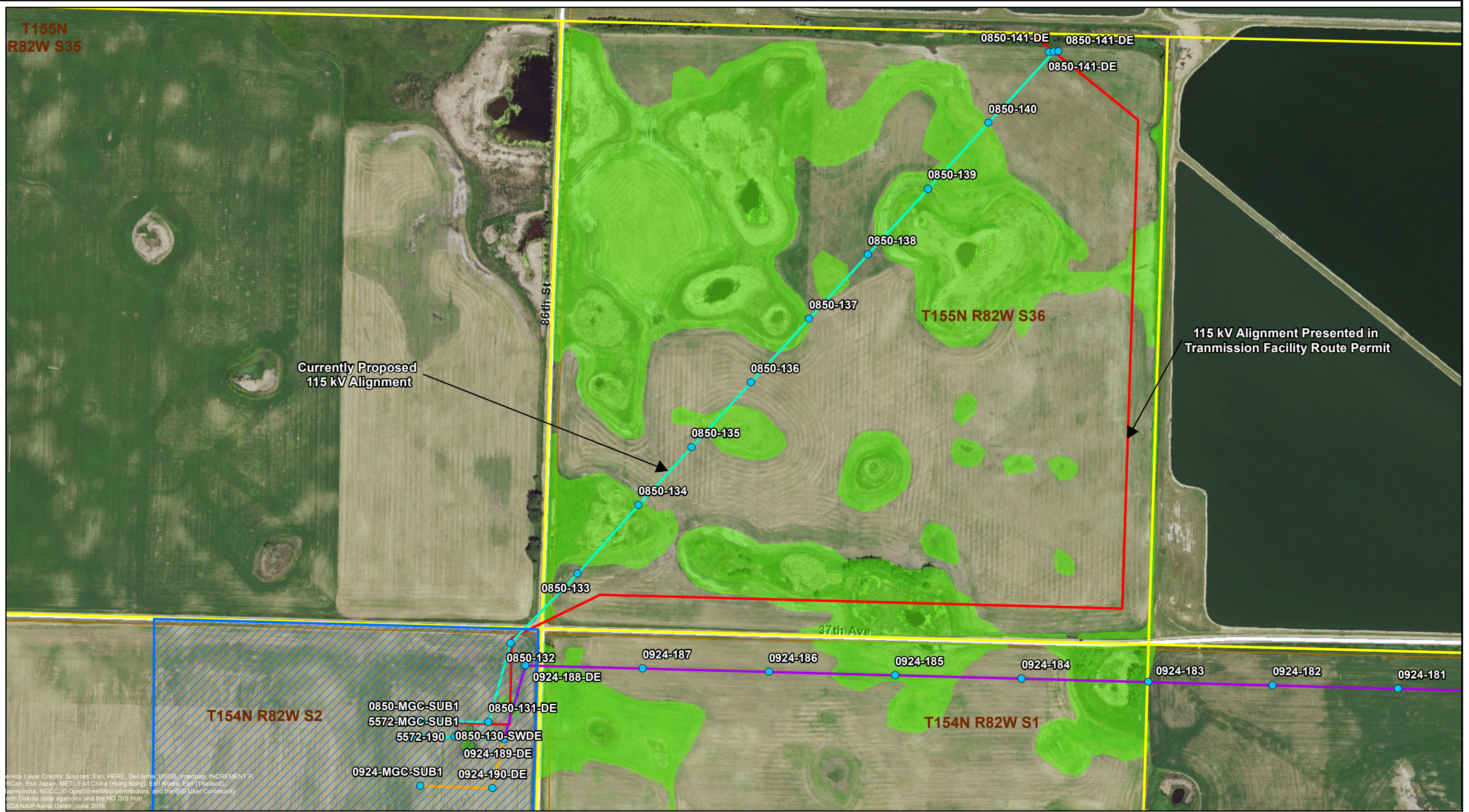
Sincerely,

Claudia J. Berg
Director, State Historical Society of North Dakota

C: John Cannon, AECOM

18-0074

P:\6750_Xcel_Energy_Minot_ND\900_WorkingDocs-GIS\LayoutApp_Figures\Minot_115_Adjustment_20171025.mxd




Service Layer Credits: Sources: Esri, HERE, DeLorme, USGS, Intermap, INCREMENT P, RCAN, Esri Japan, METI, Esri China (Hong Kong), Esri Korea, Esri (Thailand), Swisstopo, IGN, Esri India, NGCC, © OpenStreetMap contributors, and the GIS User Community
 North Dakota state agencies and the ND GIS Hub
 SDA NAIP Aerial Dated: June 2016




Project Feature	Property Ownership
● Preliminary Structure Location	 Parcel Boundary
 Magic City Substation	 Desktop Wetland Review
— 115 kV Centerline	 Wetland
— 230 kV Centerline	
— 230/115 kV Centerline	
— Previous 115 kV Centerline	

Minot Load Serving Project
115 kV Alignment Adjustment
McHenry and Ward Counties,
North Dakota

Prepared For:



Prepared By: 

Drawn:	MAR 10/25/2017
Approved:	LHK 10/25/2017
Scale:	1:4,800
PROJECT NUMBER	60342328
SHEET MAP	1