



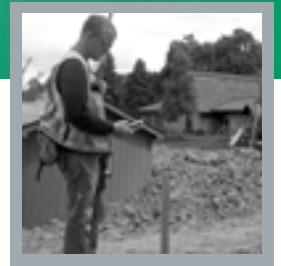
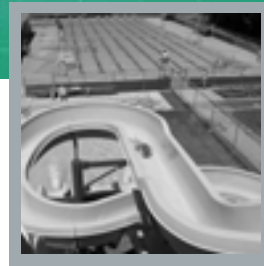
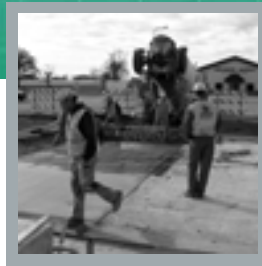
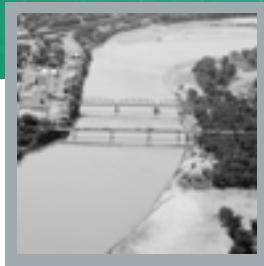
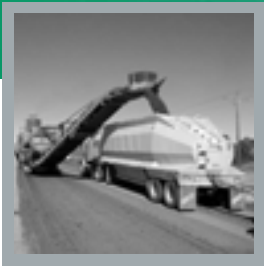
Reclamation and Revegetation Inspection Report of Xcel Energy Minot Load Serving Project

Section 2, T154N R82W, 5th P.M.
Ward County, North Dakota
and
Section 2, T152N R80W, 5th P.M.
McHenry County, North Dakota

Prepared By:



Contents



■	1. Executive Summary	1
■	2. Background & Scope	1
■	3. As-Built Construction Inspection	2
■	4. Concerns and Corrective Actions	2
■	5. Conclusion	2
■	6. Signature	3
■	6. References	3
■	Field Inspection Map	Appendix A
■	Photographs	Appendix B

1. EXECUTIVE SUMMARY

The North Dakota Energy Conversion and Transmission Facility Act (North Dakota Century Code Chapter 49-22) authorizes the Public Service Commission (Commission) to determine that the location, construction, and operation of jurisdictional energy conversion and transmission facilities will produce minimal adverse effects on the environment and the welfare of the citizens of North Dakota. Commission construction inspections ensure that energy projects are constructed in compliance with the siting laws (North Dakota Century Code Chapter 49-22), rules (North Dakota Administrative Code Article 69-06), and applicable Commission Orders.

The Commission retained Interstate Engineering, Inc. (Interstate) to complete construction inspections of the Northern States Power Company, doing business as Xcel Energy, Minot Load Serving Project, Case No. PU-17-102, which has completed construction in McHenry and Ward Counties in North Dakota. The Project involved the construction of a new substation, called the Magic City Substation, and an approximately 20.5 mile-long 230 kilovolt (kV) transmission line connecting the new substation to an existing substation, the McHenry Substation, near the City of Velva.

Construction of the Project commenced on October 9, 2017. Interstate conducted a Reclamation and Revegetation Inspection on October 8, 2019, of the entire project. Interstate prepared this report to document the reclamation and revegetation inspection and to provide a summary of compliance with the Commission Orders.

The purpose of the Reclamation and Revegetation Inspection was to observe that the project area had been adequately restored for previous use of the area, which includes the presence of revegetation. Photographs taken during the site inspection are included in Appendix B. The inspector took photos that coordinate with the photos taken for the previously submitted As-Built Construction Inspection Report to provide a better understanding of the revegetation over the past year.

2. BACKGROUND & SCOPE

On March 10, 2017, Xcel Energy filed a Consolidated Application for a Waiver or Reduction of Procedures and Time Schedules and Certificate of Corridor Compatibility and Transmission Facility Route Permit in Case No. PU-17-102 for the Minot Load Serving Project. The Project consists of a new substation, called the Magic City Substation, and an approximately 20.5-mile-long 230 kilovolt (kV) transmission line connecting the new substation to an existing substation, the McHenry Substation, near the City of Velva. The project is proposed to be designed and constructed to meet or exceed the standards of the National Electrical Safety Code (NESC) and the North Dakota Energy Conversion and Transmission Facility Siting Act (Siting Act). The Commission issued a decision approving a corridor and a route on October 4, 2017, in accordance with the Commission's Findings of Fact, Conclusions of Law and Order.

The Commission retained Interstate to complete construction inspections for the Project, which is currently under construction in McHenry and Ward Counties, North Dakota. The purpose of this inspection (Construction Inspection) was to observe the construction phase to verify that construction procedures were properly conducted during the construction phase. The inspection continued until the inspector determined that the equipment operators had demonstrated proficiency concerning the construction activities, in accordance with the Certification Relating to Order Provisions for Case PU-17-102. Photographs taken during the site inspection are included in Appendix B. The inspector took photos of the construction activities including grading and surveying to document the process.

According to Xcel Energy, the purpose of the Project is to construct a new 230 kV transmission line from the existing McHenry Substation to a new 230/115 kV substation (Magic City) as well as reconfiguring and

upgrading existing infrastructure at the McHenry Substation. This Project is needed to meet the growing demand for electricity in the Minot area and to reinforce the reliability of the region's transmission system.

Xcel Energy selected the project route after addressing the factors identified in NDCC § 49-22-09 and pursuant to the criteria in NDAC § 69-06-08-02. Xcel Energy proposes to construct a new 230 kV transmission line on double circuit structures. Most of the Project is parallel to Xcel Energy's existing 115 kV transmission line.

3. RECLAMATION AND REVEGETATION INSPECTION

On October 8, 2019, Ms. Veronica Meyer, working under Mr. Damon DeVillers, Project Manager at Interstate, conducted the reclamation and revegetation inspection of the project, which included the Magic City Substation, the McHenry Substation and the transmission line in its entirety. Ms. Meyer verified that the revegetation of the project area complied with the Commission's Order.

It was observed at both substation sites as well as along the transmission line route that adequate vegetation was present. As seen in photos 8 and 23, there are a couple of areas of concern. Photo 8 shows an area east of the Magic City Substation in which the landowner was unable to use for crops. This may have been the case before the project as well. Photo 23 shows the north side of the culvert under the access approach at the McHenry Substation. This end and the riprap surrounding it have a fair amount of silt. It is recommended that this be cleaned out. The project area was otherwise determined to comply with the Commission's Order.

4. CONCERNS AND CORRECTIVE ACTIONS

During the reclamation and revegetation inspection, as shown in photos 8 and 23, a few minor areas need correction. Otherwise, no concerns were observed at either substation site or the transmission line.

5. CONCLUSION

Generally, the reclamation and revegetation inspection showed satisfactory work, and the inspector (Ms. Meyer) determined that the contractor has demonstrated proficiency concerning the reclamation and revegetation of the project in compliance with the Commission's Order with the exception of a few minor areas.

6. SIGNATURE

Observations and findings contained in this report are based on available information, daily field reports, and photographs in a generally accepted technical practice at present.

Project Engineer Veronica M. Meyer, PE, prepared this report.



Veronica Meyer, PE
Interstate Engineering, Inc.

11/26/19
Date



Damon K. DeVillers, PE, Chairman
Interstate Engineering, Inc.

11/26/19
Date

6. REFERENCES

Joseph Samuel, Senior Project Manager for Xcel Energy
414 Nicollet Mall – 5th Floor, Minneapolis, MN 55401, October 2018

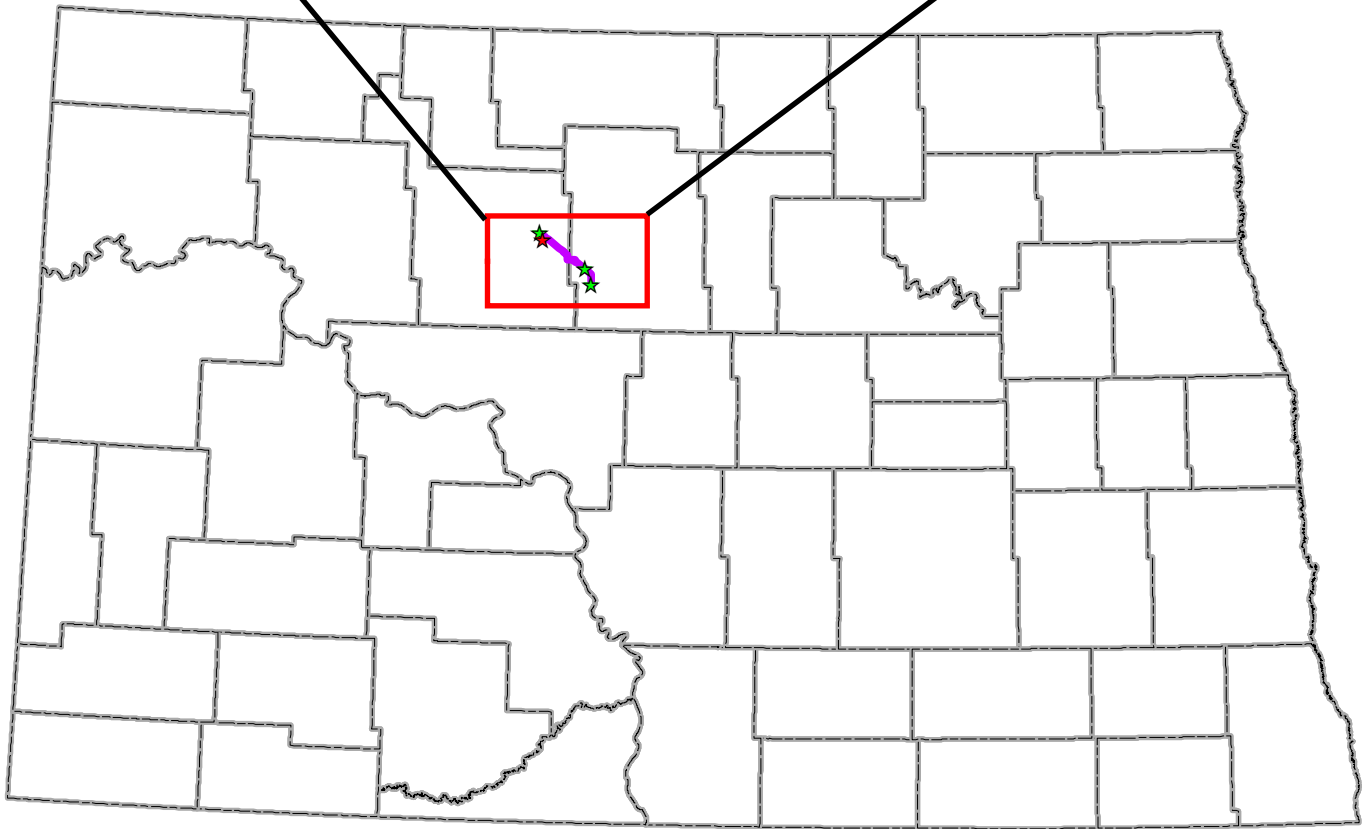
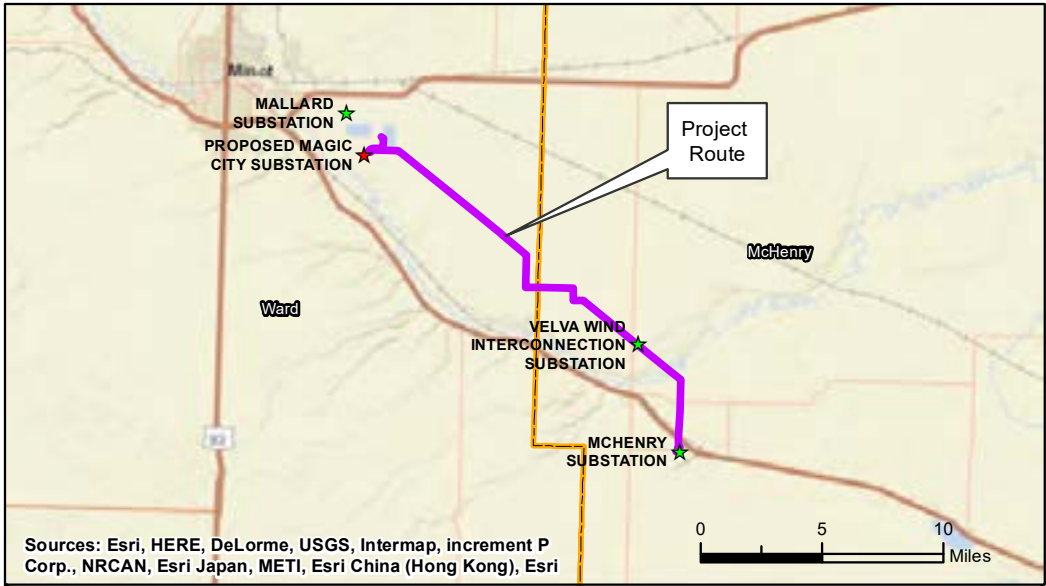
North Dakota Public Service Commission (NDPSC) Online Case Search. Available from http://www.psc.nd.gov/database/docket_file_list.php (Accessed May 2017)



APPENDIX A




Field Inspection Map

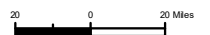
P:\5750_Xcel_Energy_Minot_ND\900_WorkingDocs\GIS\Layout\Map_Figures\20170308\Fig1_ProjLocation_8x11_20170308.mxd



North Dakota

Legend

-  Project Route
-  Proposed Substation
-  Substation



Minot Load Serving Project
 McHenry and Ward Counties, North Dakota

Figure 1
Project Location Map
 March 2017

P:\6750_Xcel_Energy_Minot_ND\900_WorkingDocs-GIS\LayoutApp_Figures\20170308\Minot_Appendix_B_20170309.mxd



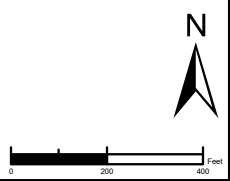
Service Layer Credits: Sources: Esri, HERE, DeLorme, USGS, Intermap, increment P Corp., NRCAN, Esri Japan, METI, Esri China (Hong Kong), Esri (Thailand), MapmyIndia, © OpenStreetMap contributors, and the GIS User Community
 North Dakota state agencies and the ND GIS Hub
 USDA NAIP Aerial Dated: June 2016



- Project Feature**
- Preliminary Structure Location
 - Potential Laydown Area
 - Preliminary 115 kV Centerline
 - Preliminary 230 kV Centerline
 - Preliminary 230/115 kV Centerline
 - Preliminary Right-of-Way (125 Feet)
 - Project Corridor

- Property Ownership**
- Parcel Boundary
- Desktop Wetland Review**
- Wetland

- Access Route**
- Primary Access



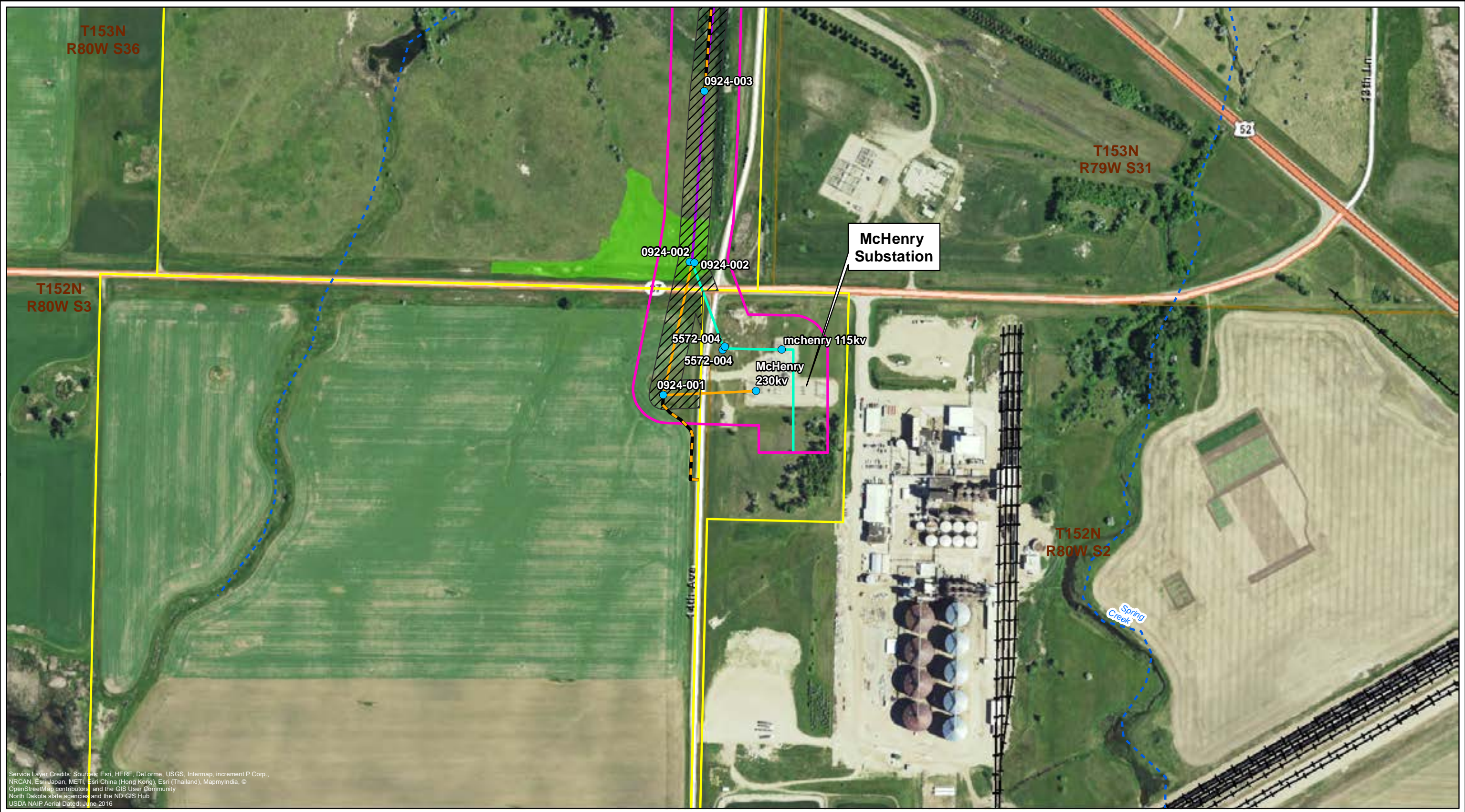
Minot Load Serving Project Appendix B - Project Sheet Map McHenry and Ward Counties, North Dakota



Prepared By: TETRA TECH

Drawn:	MAR 3/9/2017
Approved:	LHK 3/9/2017
Scale:	1:4,800
PROJECT NUMBER	60342328
SHEET MAP	1

P:\6750_Xcel_Energy_Minot_ND\900_WorkingDocs-GIS\Layout\Appendix_B_20170309.mxd



Service Layer Credits: Sources: Esri, HERE, DeLorme, USGS, Intermap, increment P Corp., NRCAN, Esri Japan, METI, Esri China (Hong Kong), Esri (Thailand), MapmyIndia, © OpenStreetMap contributors, and the GIS User Community
 North Dakota state agencies and the ND GIS Hub
 USDA NAIP Aerial Dated June 2016



Project Feature	Property Ownership	Access Route
● Preliminary Structure Location	 Parcel Boundary	 Primary Access
 Potential Laydown Area	Stream/River	
 Preliminary 115 kV Centerline	 Stream (Intermittent)	
 Preliminary 230 kV Centerline	Desktop Wetland Review	
 Preliminary 230/115 kV Centerline	 Wetland	
 Preliminary Right-of-Way (125 Feet)		
 Project Corridor		

**Minot Load Serving Project
 Appendix B - Project Sheet Map
 McHenry and Ward Counties,
 North Dakota**

Prepared For:



Prepared By: 

Drawn:	MAR 3/9/2017
Approved:	LHK 3/9/2017
Scale:	1:4,800
PROJECT NUMBER	60342328
SHEET MAP	27

■ APPENDIX B

Photographs



Photos 1-7
(Magic City Substation)

Photo 8 & 9
(Structure 178)

Photo 10
(Structure 103)

Photos 27 & 28
(Structure 30)

Photo 26
(Structure 4)

Photo 25
(Structure 2)

Photo 24
(Structure 1)

Photos 11-23
(McHenry Substation)

Photographs taken October 8, 2019, at the Magic City Substation



Photo 1 – looking southwest from east side of Magic City Substation

Photographs taken October 8, 2019, at the Magic City Substation



Photo 2 – looking south from east side of Magic City Substation

Photographs taken October 8, 2019, at the Magic City Substation



Photo 3 – looking west on the south side of Magic City Substation

Photographs taken October 8, 2019, at the Magic City Substation



Photo 4 – looking north on west side of Magic City Substation

Photographs taken October 8, 2019, at the Magic City Substation



Photo 5 – looking east on the north side of Magic City Substation

Photographs taken October 8, 2019, at the Magic City Substation



Photo 6 – looking northeast from northeast corner of Magic City Substation

Photographs taken October 8, 2019, at the Magic City Substation



Photo 7 – looking east from northeast corner of Magic City Substation

Photographs taken October 8, 2019, at the Magic City Substation



Photo 8 – looking east at structure 178

Photographs taken October 8, 2019, at the Magic City Substation



Photo 9 – looking south at structure 178

Photographs taken October 8, 2019, at the Magic City Substation

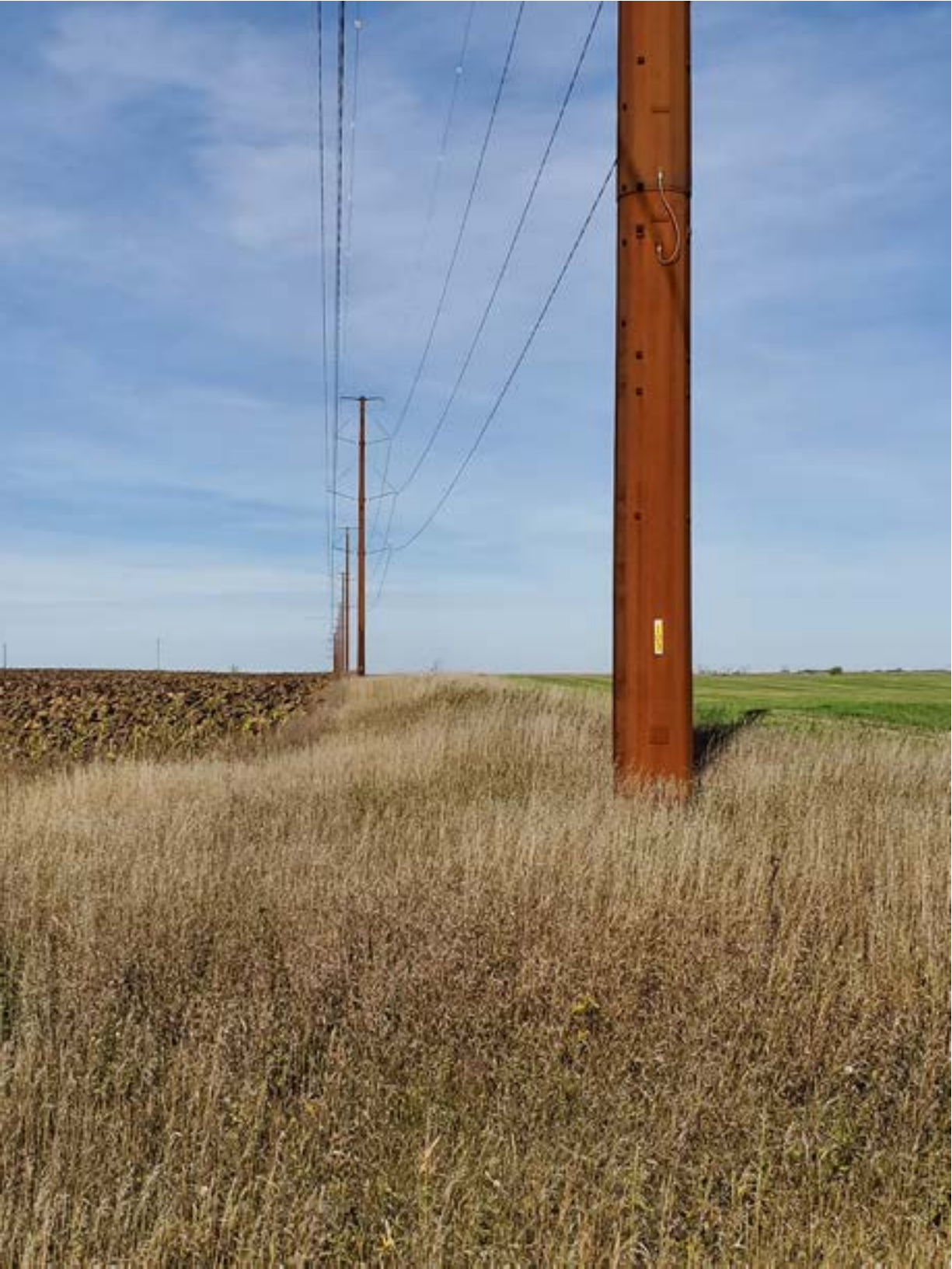


Photo 10 – looking northeast at structure 103

Photographs taken October 8, 2019, at the McHenry Substation Site



Photo 11 – looking south on west side of McHenry Substation

Photographs taken October 8, 2019, at the McHenry Substation Site



Photo 12 – looking south at the southwest corner of McHenry Substation

Photographs taken October 8, 2019, at the McHenry Substation Site



Photo 13 - looking east on south side of McHenry Substation

Photographs taken October 8, 2019, at the McHenry Substation Site



Photo 14 – looking east on south side of McHenry Substation

Photographs taken October 8, 2019, at the McHenry Substation Site



Photo 15 – looking south from southeast corner of McHenry Substation

Photographs taken October 8, 2019, at the McHenry Substation Site



Photo 16 – looking north on east side of McHenry Substation

Photographs taken October 8, 2019, at the McHenry Substation Site



Photo 17 – looking west on north side of McHenry Substation

Photographs taken October 8, 2019, at the McHenry Substation Site



Photo 18 – looking west on north side of McHenry Substation at ditch

Photographs taken October 8, 2019, at the McHenry Substation Site



Photo 19 – looking south at ditch on the west side of McHenry Substation

Photographs taken October 8, 2019, at the McHenry Substation Site



Photo 20 – looking west from northwest corner of McHenry Substation at ditch

Photographs taken October 8, 2019, at the McHenry Substation Site



Photo 21 – looking south from northwest corner of McHenry Substation at inlet

Photographs taken October 8, 2019, at the McHenry Substation Site



Photo 22 – looking north from entrance to McHenry Substation



Photo 23 – looking southeast at inlet on the north side of access

Photographs taken October 8, 2019, at the McHenry Substation Site



Photo 24 – looking west at structure 1

Photographs taken October 8, 2019, at the McHenry Substation Site



Photo 25 – looking northwest at structure 2

Photographs taken October 8, 2019, at the McHenry Substation Site



Photo 26 – looking north at structure 4



Photo 27 – looking southwest at structure 30

Photographs taken October 8, 2019, at the McHenry Substation Site



Photo 28 – looking east from structure 30

Photographs taken October 8, 2019, at the McHenry Substation Site



Photo 29 – looking northwest at structure 62

