

**STATE OF NORTH DAKOTA
PUBLIC SERVICE COMMISSION**

**Oasis Midstream Services LLC
Wild Basin Gas Plant – McKenzie County
Siting Application**

Case No. PU-17-181

NOTICE OF FILING AND PUBLIC HEARING

May 31, 2017

A public hearing on the application for Case No. PU-17-181 is scheduled for July 14, 2017, at 9:00 a.m. Central Time, at Teddy's Residential Suites, 113 9th Ave SW, Watford City, North Dakota 58854.

On May 4, 2017, Oasis Midstream Services LLC (Oasis) filed an application for a certificate of site compatibility for the expansion of its existing Wild Basin Gas Plant from 80 million standard cubic feet per day (MMSCFD) of gas processing to add an additional 265 MMSCFD of processing capacity to the existing plant. Additionally, the expansion will include a 200 MMSCFD processing train, up to 65 MMSCDF in modular Mechanical Refrigeration Units, natural gas liquid (NGL) storage, NGL truck offload area, a fourth stabilizer for increased crude oil throughput and a 150,000 barrel working capacity storage tank to accommodate increased gathering throughput.

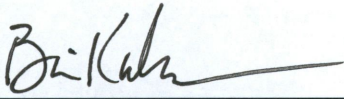
The issues to be considered in Oasis's application for a certificate of site compatibility are:

1. Will the location, construction and operation of the proposed facilities produce minimal adverse effects on the environment and upon the welfare of the citizens of North Dakota?
2. Are the proposed facilities compatible with the environmental preservation and the efficient use of resources?
3. Will the proposed facilities location minimize adverse human and environmental impact while ensuring continuing system reliability and integrity and ensuring that energy needs are met and fulfilled in an orderly and timely fashion?

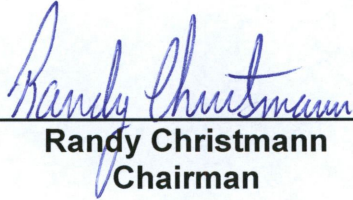
For more information contact the Public Service Commission, State Capitol, Bismarck, North Dakota 58505, 701-328-2400; or Relay North Dakota, 1-800-366-6888

TTY. If you require any auxiliary aids or services, such as readers, signers, or Braille materials, please notify the Commission at least 24 hours in advance.

PUBLIC SERVICE COMMISSION



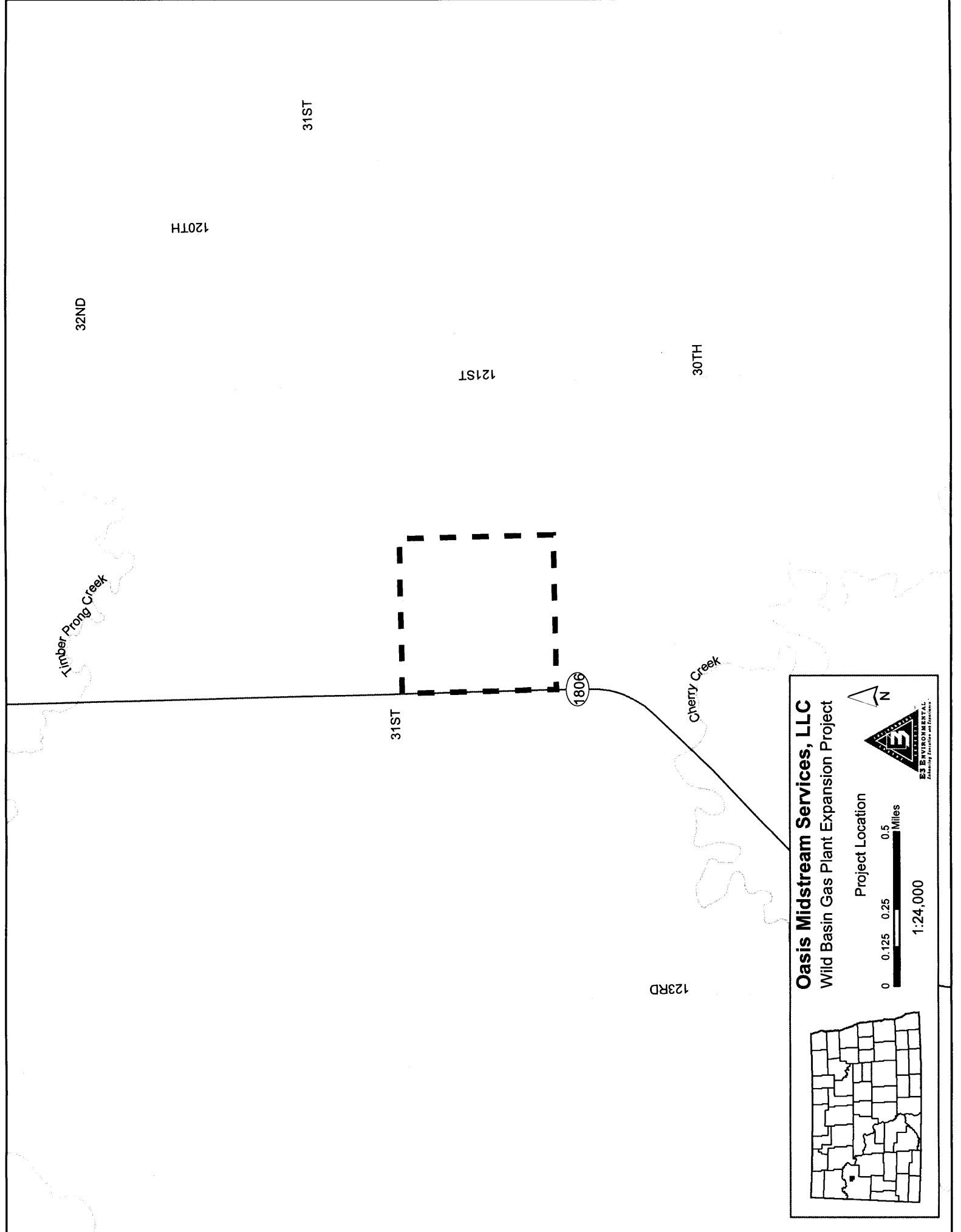
**Brian Kroshus
Commissioner**



**Randy Christmann
Chairman**



**Julie Fedorchak
Commissioner**



Oasis Midstream Services, LLC
 Wild Basin Gas Plant Expansion Project

Project Location

0 0.125 0.25 0.5 Miles

1:24,000