

## PSC Case No. PU-17-181

### Oasis Midstream Services LLC

### Wild Basin Gas Plant Expansion - McKenzie County

### Construction Inspection Report - 11/22/2017

Bartlett & West (BW) conducted a Construction Inspection of the Oasis Midstream Services Wild Basin Gas Plant Expansion (Case No. PU-17-181) on November 22, 2017. BW inspector Dan Christenson met with Oasis' Construction Superintendent, Mr. John Gallaty. Construction progress was discussed and a construction site tour was conducted.

Construction continues to track with the original schedule provided and no concerns were raised during the inspection. The type of work completed thus far includes topsoil removal, site grading, earth work, foundation installation, setting major equipment, piping installation, instrumentation installation, and electrical installation. Erosion control measures and storm water structures have been installed since the previous inspection. The necessary borrow material being utilized from the hill on the south side of the construction site has been moved with the completion of site grading. The site has sufficient drainage characteristics and all storm water structures and erosion control measures are structurally adequate. No buried piping has been installed yet and the minimum depth of cover requirements will be verified in the following construction inspection.

The following table was taken from the most recently submitted Monthly Construction Progress Report provided by Oasis on October 27<sup>th</sup>:

Description	% Complete	Description	% Complete
Site Grading	100 %	Install Piping	1 %
Construction Mobilization	100 %	Install Instrumentation & Elec	0 %
Screw Pile Installation	75 %	Install Insulation	0 %
Major Foundations	90 %	Paint	0 %

# Bartlett & West

Driving Community and Industry Forward, Together.

Major Equipment Set	5 %	Commissioning	0 %
Main Pipe Rack	0 %	Start-up	0 %
<b>Monthly Activity</b>			
Completed setting NGL storage tanks (10). Receiving major equipment. Continuing to install screw piles and pouring foundations for other large equipment and structures. Installing piping for NGL storage tanks.			
<b>Additional Comments</b>			
Temporary MRU Progress (40 MMCFD capacity): In operation and processing gas. On-going commissioning and finishing up construction activities.			

At this point it appears that the site is being constructed in compliance with the siting laws and rules, and the PSC Order for the project. The pages following include photographs taken during the inspection and a location map.

  
James Landenberger, Project Manager



Figure 1. View from northeast portion of construction site, looking southwest. Poured equipment foundations and site grading shown.



Figure 2. View from northeast portion of construction site, looking southwest. Stabilized Scoria road and site grading shown.

# Bartlett & West

Driving Community and Industry Forward. Together.



Figure 3. View from northeast portion of construction site, looking northeast. Future buried pipeline being assembled above grade.



Figure 4. View of equipment foundation preparation.



Figure 5. View from northwest portion of construction site, looking northeast. NGL storage tanks installed.



Figure 6. View from western portion of construction site, looking west. Erosion control measures shown.



Figure 7. View from western portion of construction site, looking east. Storm water structures installed.

# Bartlett & West

Driving Community and Industry Forward, Together.

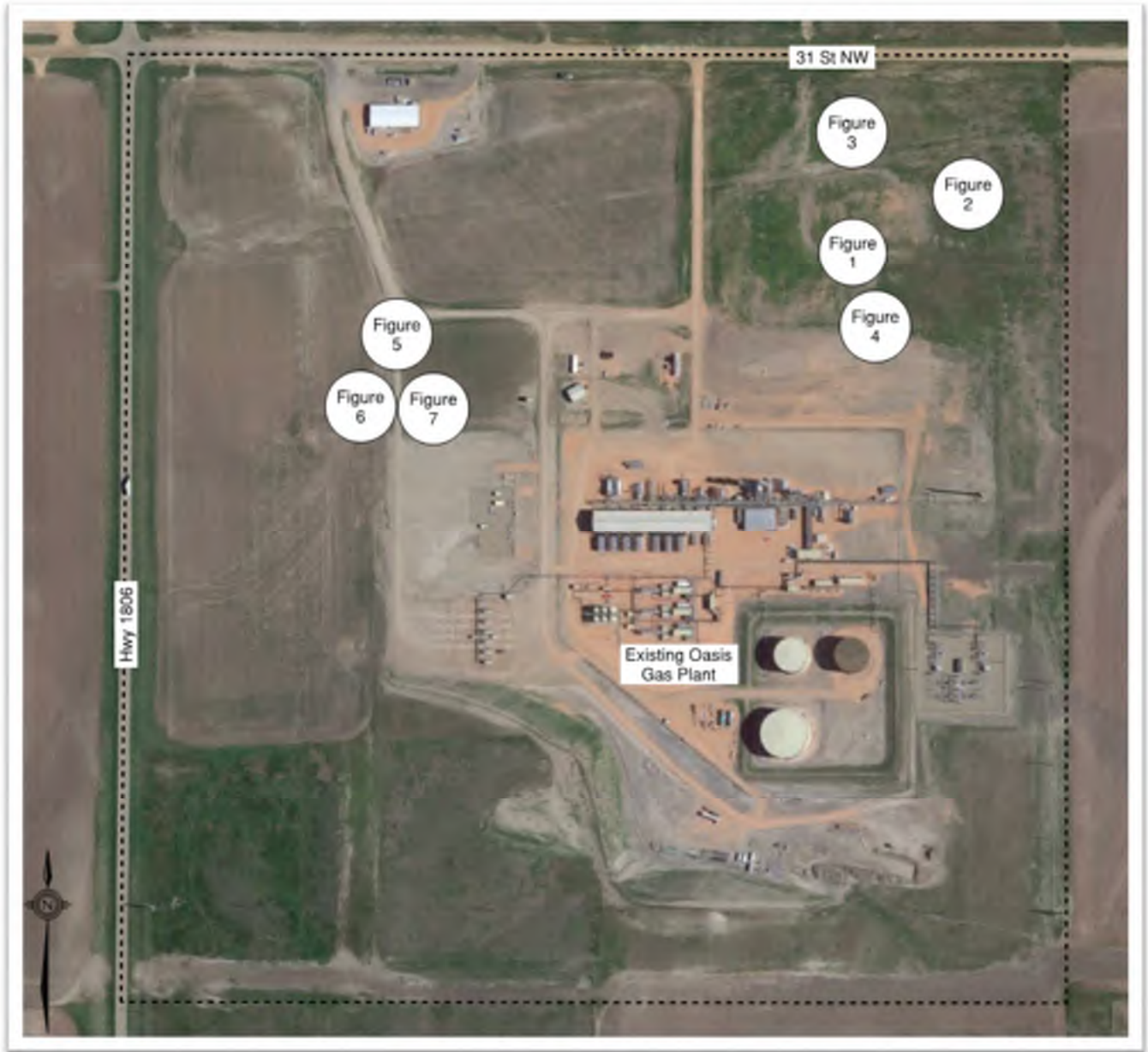


Figure 8. Figure Location Map