

Bartlett & West

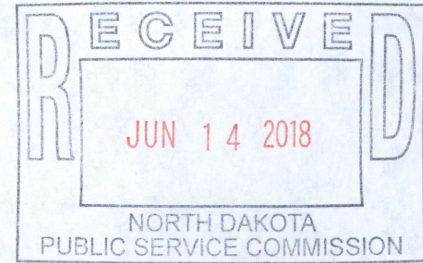
Driving Community and Industry Forward, Together.

PSC Case No. PU-17-181

Oasis Midstream Services LLC

Wild Basin Gas Plant Expansion - McKenzie County

Construction Inspection Report - 6/12/2018



Bartlett & West (BW) conducted a Construction Inspection of the Oasis Midstream Services Wild Basin Gas Plant Expansion (Case No. PU-17-181) on June 12, 2018. BW inspector Dan Christenson met with Oasis' Construction Manager, Mr. Steve Johnson. Construction progress was discussed and a construction site tour was conducted.

Construction continues to track with the original schedule provided and no concerns were raised during the inspection. Construction remains on track for commissioning in September, approximately 200 workers are actively working on the site. Work completed since the last inspection includes foundation installation, setting major equipment, piping installation, instrumentation installation, electrical installation, and seeding. Additional erosion control measures and storm water structures have been installed since the previous inspection. Construction crews were installing a gas pipeline near the western portion of the site and the 48" minimum depth of cover required per the PSC Order was verified.

The following table was taken from the most recently submitted Monthly Construction Progress Report provided by Oasis on May 25th:

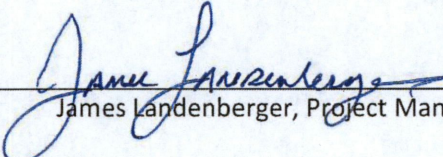
Description	% Complete	Description	% Complete
Site Grading	100 %	Install Piping	33 %
Construction Mobilization	100 %	Install Instrumentation & Elec	15 %
Screw Pile Installation	99 %	Install Insulation	0 %
Major Foundations	100 %	Paint	0 %
Major Equipment Set	98 %	Commissioning	0 %

Bartlett & West

Driving Community and Industry Forward, Together.

Main Pipe Rack	100 %	Start-up	0 %
Monthly Activity			
98% complete setting all equipment. Installing piping to/from equipment. Installing electrical gear in MCC. Loading pipe racks with cable tray. Installing/terminating instrumentation. Installing misc. screw piles and concrete foundations. Completed site grading for new control room.			
Additional Comments			
On track for late September commissioning.			

At this point it appears that the site is being constructed in compliance with the siting laws and rules, and the PSC Order for the project. The pages following include photographs taken during the inspection and a location map.


James Landenberger, Project Manager

Bartlett & West

Driving Community and Industry Forward, Together.



Figure 1. View from western portion of construction site, looking southeast at gas pipeline construction.



Figure 2. View from northeast portion of construction site, looking north at storm water control infrastructure.

Bartlett & West

Driving Community and Industry Forward, Together.



Figure 3. View from northeast portion of construction site, looking south at storm water control outlet and erosion control measures.



Figure 4. View from northeast portion of construction site, looking north at the drainage area which receives the construction site storm water runoff.

Bartlett & West

Driving Community and Industry Forward, Together.



Figure 5. View from western portion of construction site, looking west at new location and construction progress of control room.



Figure 6. View from eastern portion of construction site, looking west at electrical and flare construction progress.

Bartlett & West

Driving Community and Industry Forward, Together.



Figure 7. View from central portion of construction site, looking east at construction progress.

Bartlett & West

Driving Community and Industry Forward, Together.

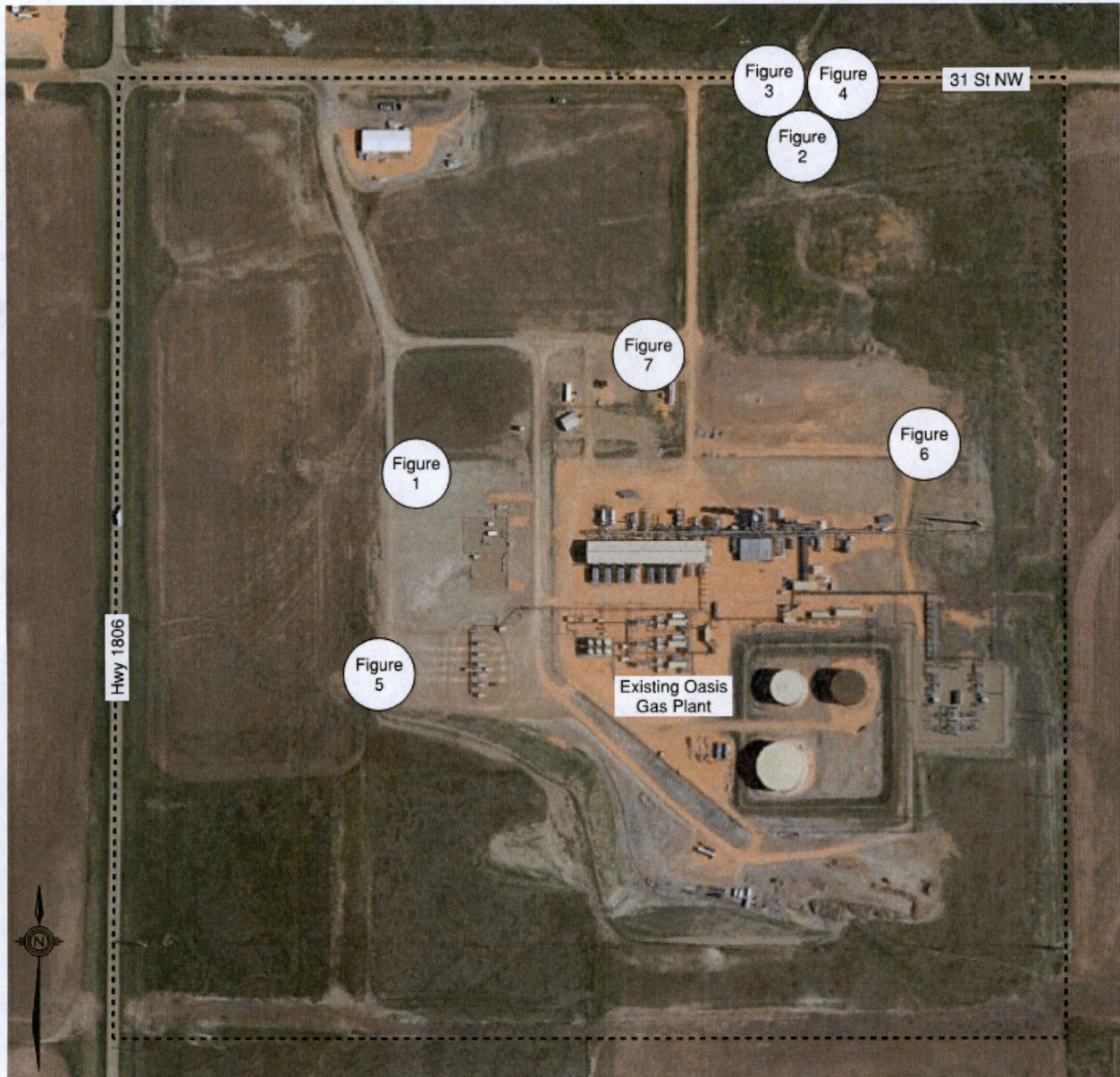


Figure 8 Figure Location Map