

# Bartlett & West

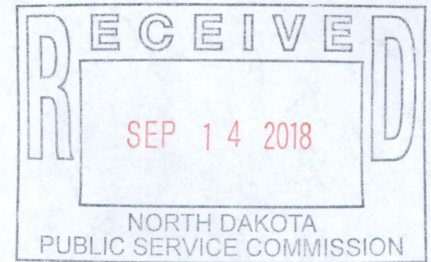
Driving Community and Industry Forward, Together.

**PSC Case No. PU-17-181**

**Oasis Midstream Services LLC**

**Wild Basin Gas Plant Expansion - McKenzie County**

**PU-17-181 As-built Construction Inspection Report - 9-12-2018**



On August 31<sup>st</sup>, 2018 Oasis Midstream Services' Construction Superintendent confirmed that seeding at the Oasis Midstream Services Wild Basin Gas Plant Expansion (Case No. PU-17-181) project site had been completed. Bartlett & West (BW) conducted an As-built Construction Inspection on September 12, 2018. BW inspector Dan Christenson met with Oasis' Construction Manager, Mr. Steve Johnson. Construction progress was discussed and a construction site tour was conducted.

Construction continues to track with the original schedule provided and no concerns were raised during the inspection. Construction remains on track for commissioning in late September. Work completed since the last inspection includes screw pile installation, setting major equipment, piping installation, instrumentation installation, electrical installation, insulation installation, painting, commissioning, and seeding. Grading, fertilization, and seeding of the entire project area has been completed per the PSC Order. Vegetation growth was already observed in some areas of the project site that were seeded earlier in the year.

The following table was taken from the most recently submitted Monthly Construction Progress Report provided by Oasis on May 25<sup>th</sup>:

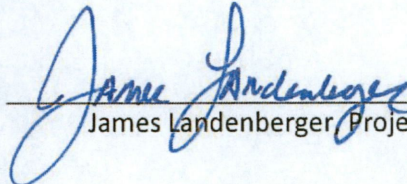
Description	% Complete	Description	% Complete
Site Grading	100 %	Install Piping	95 %
Construction Mobilization	100 %	Install Instrumentation & Elec	90 %
Screw Pile Installation	100 %	Install Insulation	50 %
Major Foundations	100 %	Paint	50%
Major Equipment Set	99 %	Commissioning	10%

# Bartlett & West

Driving Community and Industry Forward, Together.

Main Pipe Rack	100 %	Start-up	0 %
		<b>Total</b>	95%
<b>Monthly Activity</b>			
99% complete setting all equipment. Installing piping to/from equipment. Installing electrical gear in MCC. Pulling cable/wire. Installing/terminating instrumentation. Sheeting compressor building. Pressure testing. Commissioning equipment. Installing flooring, finishes, cabinets, etc. in new control room.			
<b>Additional Comments</b>			
On track for late September commissioning.			

At this point it appears that the site is being constructed in compliance with the siting laws and rules, and the PSC Order for the project. The pages following include photographs taken during the inspection and a location map. Per the Inspection Contract, Bartlett & West will perform a Reclamation and Revegetation Inspection after one full growing season but not less than one year from the anniversary date of completion of fertilization and seeding.

  
James Landenberger, Project Manager

# Bartlett & West

Driving Community and Industry Forward, Together.



Figure 1. View from northern portion of construction site, looking east at revegetation progress.



Figure 2. View from western portion of construction site, looking north at revegetation progress.

# Bartlett & West

Driving Community and Industry Forward, Together.



Figure 3. View from western portion of construction site, looking south at seeded gas pipeline right-of-way.



Figure 4. View from southern portion of construction site, looking south at the barrow material hill revegetation progress.

# Bartlett & West

Driving Community and Industry Forward, Together.



Figure 5. View from northeastern portion of construction site, looking south at storm water outlet revegetation progress.

# Bartlett & West

Driving Community and Industry Forward, Together.

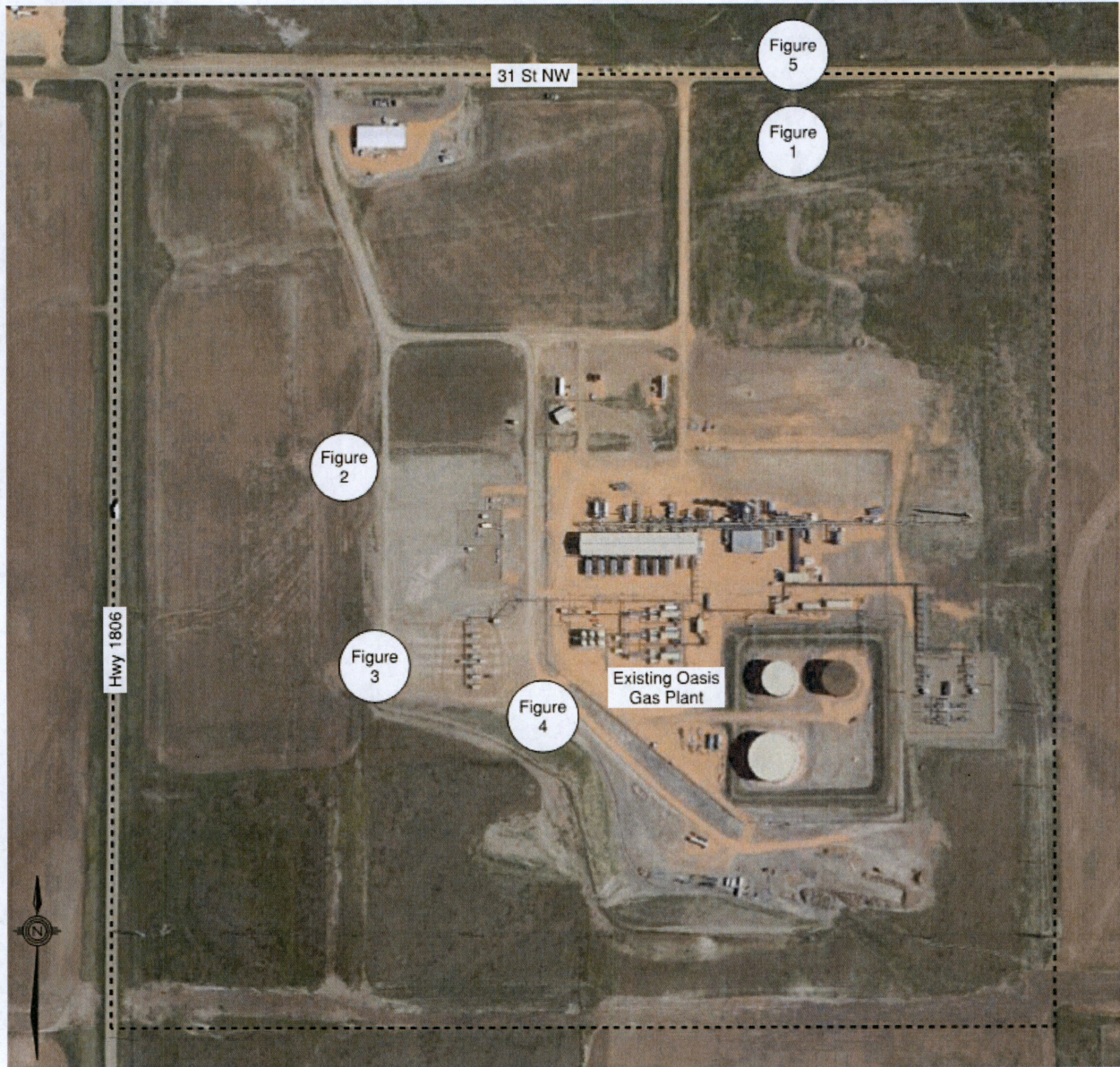


Figure 7 Figure Location Map