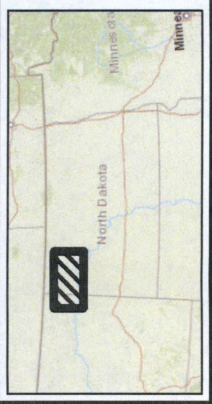


WILLISTON AIRPORT LINE 84 & 86  
REROUTE



- EXISTING PIPELINES
- LINE 84 & 86 CENTERLINE

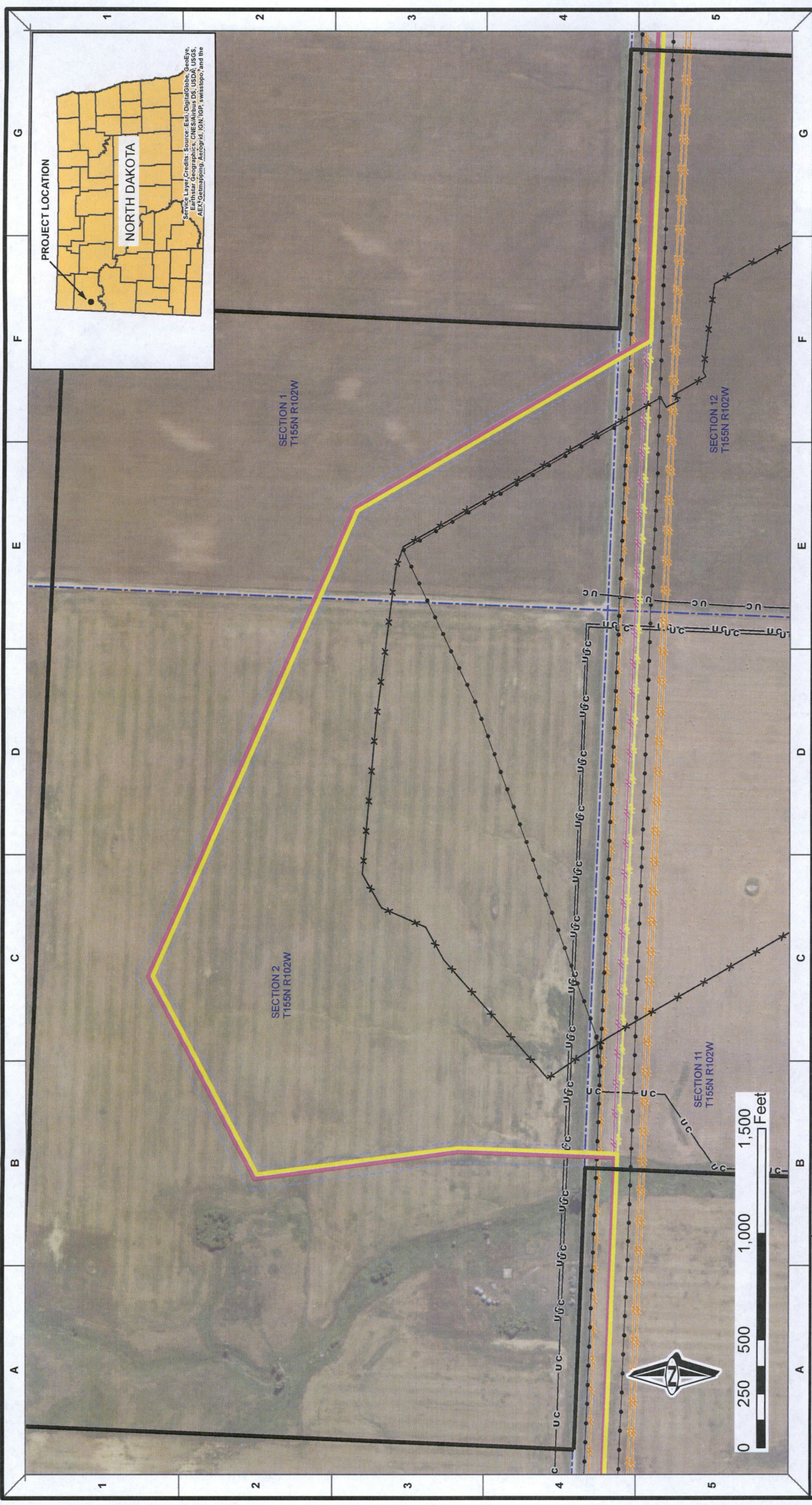
REV. NO.	DATE	APPROVED	DESCRIPTION
0	12/06/17	ERS	ISSUED FOR AS-BUILT
		JFK	
		A.W	

PREPARED BY  


**ENBRIDGE**  
**WILLISTON AIRPORT LINE 84 AND 86 REROUTE PROJECT**  
 WILLIAMS COUNTY OVERVIEW  
 SEC 1,2,11,12 T155N, R102W  
 DRAWN: A.W. CHECKED: ERS  
 DATE: 12/06/17 SCALE: AS SHOWN

**EXHIBIT A**

Service Layer Credits: Sources: Esri, HERE, DeLorme, USGS, Intermap, INCREMENT P, NRCan, Esri Japan, METI, Esri China (Hong Kong), Esri Korea, Esri (Thailand), Swisstopo, Mapbox, OpenStreetMap contributors, and the GIS User Community



**ENBRIDGE**

**WILLISTON AIRPORT LINE 84 AND 86 REROUTE PROJECT**

WILLIAMS COUNTY AERIAL NORTH DAKOTA  
 DRAWN: ALW CHECKED: ERS  
 DATE: 12/06/17 SCALE: AS SHOWN

PREPARED BY:  
**TETRA TECH ROONEY**  
 (705) 792-9911

ISSUED FOR AS-BUILT	REV	DATE	DESCRIPTION
	0	12/06/17	

**GENERAL NOTES**

- TETRA TECH ROONEY AND/OR ENBRIDGE ARE NOT RESPONSIBLE FOR THE LOCATION OF THIRD-PARTY PIPELINES AND UTILITIES SHOWN ON THIS DRAWING. THIS INFORMATION IS PRESENTED ON A BEST EFFORTS BASIS AND IS PROVIDED WITHOUT LIABILITY ON THE PART OF TETRA TECH ROONEY AND/OR ENBRIDGE FOR ANY DAMAGES RESULTING FROM ERRORS OR OMISSIONS IN THIS INFORMATION.
- PRIOR TO COMMENCING ANY ACTIVITIES WHICH COULD IMPACT PIPELINES OR UTILITIES CONTACT NORTH DAKOTA ONE-CALL AT 1-800-795-6555.
- COORDINATE SYSTEM: NORTH DAKOTA NORTH STATE PLANE, NAD 83, NORTH ZONE, USFEET

**LEGEND**

	CURRENT LINE 84 NPS 8		CURRENT LINE 86 NPS 10
	100' ROW		AIRPORT PROPERTY LINE
	AIRPORT PERIMETER FENCE		UTILITIES
	BURIED UTILITY		ELECTRICAL UTILITY
	OTHER PIPELINE		PREVIOUS LINE 84 - REMOVED
	PREVIOUS LINE 86 - REMOVED		



