

August 7, 2017

Darrel Nitschke
Executive Director
North Dakota Public Service Commission
600 East Boulevard - Department 408
Bismarck, ND 58505-0480



Re: Basin Electric Power Cooperative - Logan to Tioga 230-kV Transmission Line
Highway Structure Relocation Project - Case Number 9737

Dear Mr. Nitschke:

On August 14, 1978, the North Dakota Public Service Commission approved a Certificate of Site Compatibility for Transmission Facility Corridor (Certificate of Corridor No. 17) for Basin Electric Power Cooperatives' ("**Basin Electric**") Logan to Tioga 230-kV Transmission Line and related substation facilities. The 230-kV transmission line was built pursuant to Chapter 49-22 of the North Dakota Energy Conversion and Transmission Facility Siting Act.

To continue to support regional transmission reliability, structures located immediately on each side of North Dakota Highway 8, will be replaced to provide the necessary clearances from Mountrail Williams Distribution Cooperative's proposed 115-kV distribution line upgrade project. The construction activity is minimal and is anticipated to be completed in the fall of 2017.

In accordance with North Dakota Century Code 49-22-03 (3)(a)(4), enclosed please find a notarized certification indicating any improvement activities of this transmission line will not affect any known exclusion or avoidance areas as defined in North Dakota Administrative Code 69-06-08-02 (1) and (2). Basin Electric will comply with all applicable conditions and protections in siting laws and rules and commission orders previously issued.

In addition to the attached certificate, please see the enclosed map for additional information. If you have any questions or require supporting information please contact me at (701) 557-5635.

Sincerely,

A handwritten signature in black ink that reads 'Cris Miller'.

Cris Miller
Environmental Services Administrator

/ser

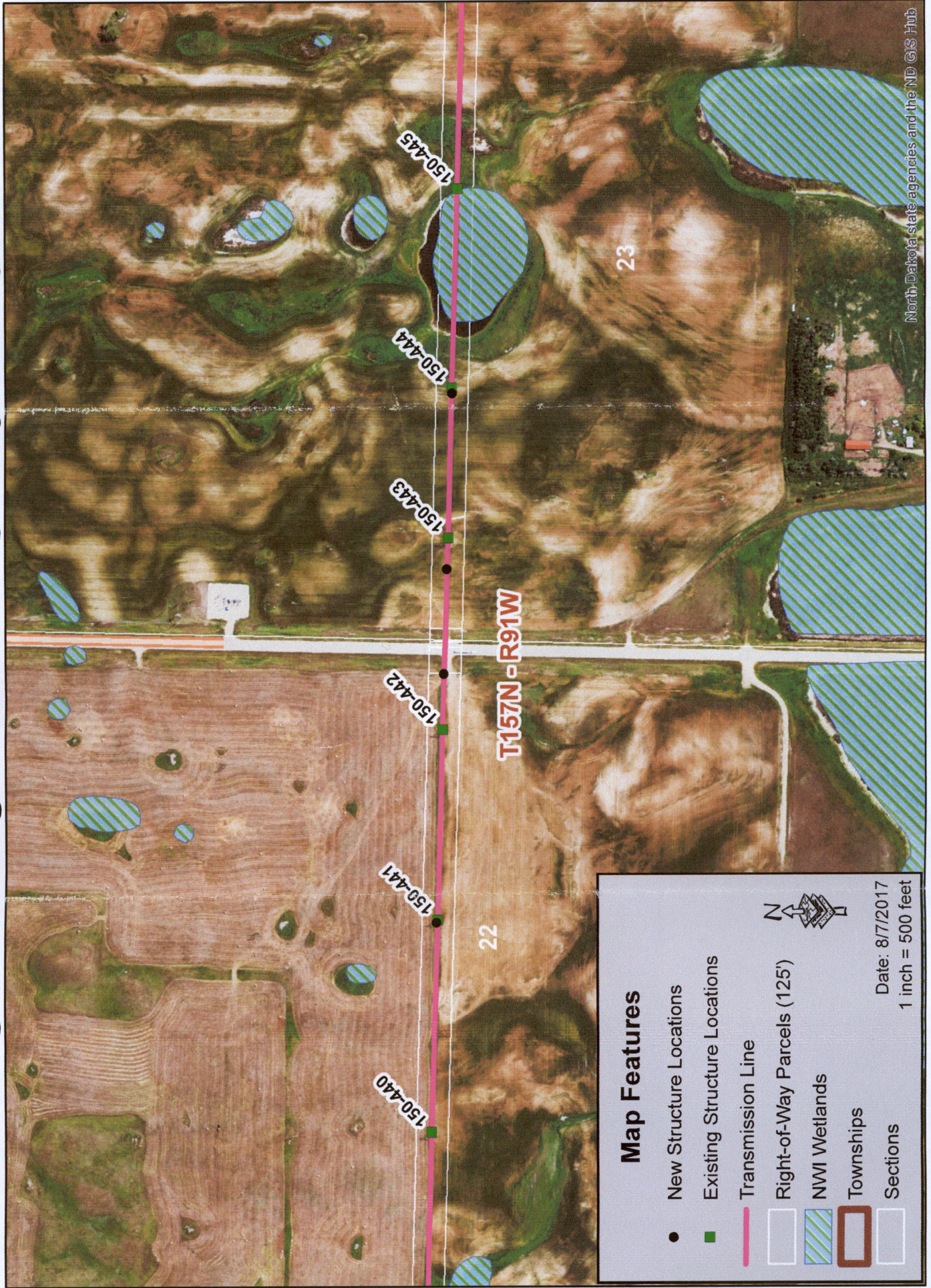
Enclosures

1 **PU-17-318** Filed: 8/7/2017 Pages: 3
Certification regarding exclusion and avoidance areas with supporting documentation

Basin Electric Power Cooperative

Cris Miller, Envir. Services Admin.

Logan to Tioga 230-kV Highway 8 Project



Map Features

- New Structure Locations
- Existing Structure Locations
- Transmission Line
- Right-of-Way Parcels (125')
- ▨ NW1 Wetlands
- Townships
- Sections



Date: 8/7/2017
1 inch = 500 feet