

June 13, 2017

To: Shelly Bauske
North Dakota Public Service Commission
<sbauske@nd.gov>
600 E. Boulevard Avenue
Bismarck, ND 58505-0480

From: Brian Custer
E&C Project Manager
Schlumberger Technologies

Reference: Scale Variance Request for Avery Weigh-Tronix IMXT Portable Truck Scale, 70ft L x 10ft W, serial number (s) 15020039 and Unknown; 120,000lbs capacity Each.

Dear Ms. Bauske:

The purpose of my letter is to respectfully request a variance from the North Dakota code Sections 69-10-02-05 regarding portable above ground truck scales. There will be two(2) Avery Weigh-Tronix heavy duty truck scales Model IMXT 120,000lb each installed in the Williston North Dakota area (one inbound scale and one outbound scale). A permanent foundation will accompany the installation of these scales that will meet all North Dakota requirements in reference to pier depth, approach and exit lengths, and clearance of scale. Also accompanied with this scale will be rigorous cleaning and inspection procedures that will ensure longevity of each scale system. 8" safety guiderails will run down both sides of the scale to ensure driver safety when pulling on and off the scale. Drawings have been attached for reference.

The clearance under the scale will be sloped to one side, thus allowing gravitational drainage and ease of cleaning. This particular design of scale (Avery Weigh-Tronix IMXT) does not have any protruding structural components or exposed I-Beams, lever arms, or pivots and bearings that are typical in older scale designs that would trap and cause debris accumulation. The entire area under the scale is sealed by a metal pan (the manufacturer calls this "sandwich" construction) thus eliminating any possibility of build-up. Under full load this scale only deflects 5/8" at mid-span of a module (each module being approximately 23ft long). Movement of the entire structure laterally is no more the 5/8" and is internally checked at 4 places within the eight (8) load cell stands.

Furthermore, there are no so called "bumper bolts" at each end of the scale that bang against the end walls and require frequent adjustment. Deflection of the load cell under full load is no more than .0030" unlike the very active "live" structures contained in I-beam, pivot, bearing and transfer beam scales from other manufacturers. Also, the load cells are contained in an easily accessible compartment with removable covers for ease of cleaning. We will regularly inspect and clean these areas per the manufacturer and scale service company's recommendations to ensure long-term, accurate performance. By following a regular, semi-annual cleaning procedure we feel this process will ensure uninterrupted and accurate performance of the scale.

There will be one rented scale from Rocky Mountain Scale Works that is currently in stock at their facility (serial number listed above). A second scale will be purchased from Rocky Mountain Scale Works which will be owned by Schlumberger totaling two portable scales to be installed in a fixed location (SN unknown at this time). Both of these scales are identical in Model and design. At this time, the scales will be used for a period of six months to a year dependent on local job length and completion times. The scales capacity will be set up as 120,000lb capacity with an increment size of 20lb. The concentrated load capacity of the scale is 45t with each load cell (Weighbar) capacity at 75,000lb per cell. This is well above normal operating weightings in relation to the axle weights and load requirements as stated in highway and interstate regulations.

Below are a few pictures of the scale, and Weighbar load cell exclusive to Avery Weigh-Tronix. Please also reference the drawing, specification sheet of scale and Weighbar, and basic installation manual.



Cover plate removed over the load cell area for easy access and cleaning.



Cover Plates removed on both sides of one section.

The location of the scale as well as contact individual is listed below. For any questions regarding the scale please call Dylan Moses with Rocky Mountain Scale Works at the number listed below.

Schlumberger Site Contact

Brian Custer
E&C Project Manager
Schlumberger Technologies
Office: 303-218-3103
Cell: 318-218-8797
bcuster2@slb.com

Schlumberger Site Address

3451 Hwy 58
Fairview, MT 59221

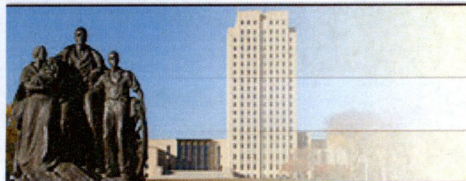
Rocky Mountain Scale Works

Dylan Moses
Eastern Branch Manager
5535 Interstate Ave
Billings Mt, 59101
Cell: 406-239-0228

Respectfully submitted,

Brian Custer
E&C Project Manager
Schlumberger Technologies

North Dakota

nd.gov Official Portal for
North Dakota State GovernmentNorth Dakota
LEGENDARY

SECRETARY OF STATE NORTH DAKOTA

[Home](#) | [Business Records Search](#)

SCHLUMBERGER TECHNOLOGY CORPORATION

Corporation Details

System ID: 3295600 **Phone:** (832) 424-4183
Type: FOREIGN BUSINESS CORPORATION
Status: Active & Good Standing
Original File Date: 05/11/1966 **Effective Date:** 05/11/1966
State of Origin: Texas

Nature of Business

OILFIELD SERVICES

Principal Office

300 SCHLUMBERGER DR MD 23 SUGAR LAND, TX 77478-3155

Registered Agent

CAPITOL CORPORATE SERVICES, INC.

51 BROADWAY N STE 600
FARGO, ND 58102-4970
Established Date: Aug 17, 2016

Generate an Annual Report To File

To Generate a Annual Report form to be filed with the Secretary of State, select the appropriate year of the report you intend to file. This report does not contain details of a report previously filed with the Secretary of State. The annual report years reflected are an indication of the various report forms available in this site and is not an indication that an entity needs to file reports for all years. Missing years indicate that the forms for the missing year have not yet been deployed to the website, or have already been removed, and can be obtained by contacting the Secretary of State.

[2017](#) (generates a forms-fillable pdf in a new pop-up window)

[Return to Search Results](#)

[Contact Us](#)

[Disclaimer](#) | [Privacy Policy](#)

We use Secure Sockets Layer (SSL) encryption technology to ensure your information is secure and protected.

Will open a new window (pop-up).

W3C WAI AA, CSS, XHTML Compliant | Copyright 2006. All Rights Reserved. The State of North Dakota.

BALANCES

COUNTING SCALES

BENCH SCALES

CHECKWEIGHERS

CONVEYOR SCALES

FLOOR SCALES

INDICATORS

TRUCK SCALES

RAILROAD SCALES

TECHNOLOGY

SOFTWARE

JUNCTION BOXES

FORKLIFT SCALES

MONORAIL SCALES

PRINTERS

REMOTE DISPLAYS

Avery Weigh-Tronix
Technology



THE ULTIMATE LOAD CELL ALTERNATIVE

Weigh Bar®

Avery Weigh-Tronix

The Weigh Bar® was designed to overcome the shortcomings of the load cell and to provide the user with a rugged, highly reliable and linear load sensing device at reasonable cost. More than twenty years of extensive use in industrial, farm and transportation applications has demonstrated that the Weigh Bar has met these requirements. The unique, robust design of the Weigh Bar is the primary reason for this success.

Weigh Bar® The Ultimate Load Cell Alternative

PHYSICAL FEATURES

Inherent Protection

The unique design of the Weigh Bar eliminates the need for external mechanical protection or ball feet, extending the life of the scale and foundations.

Potting Material

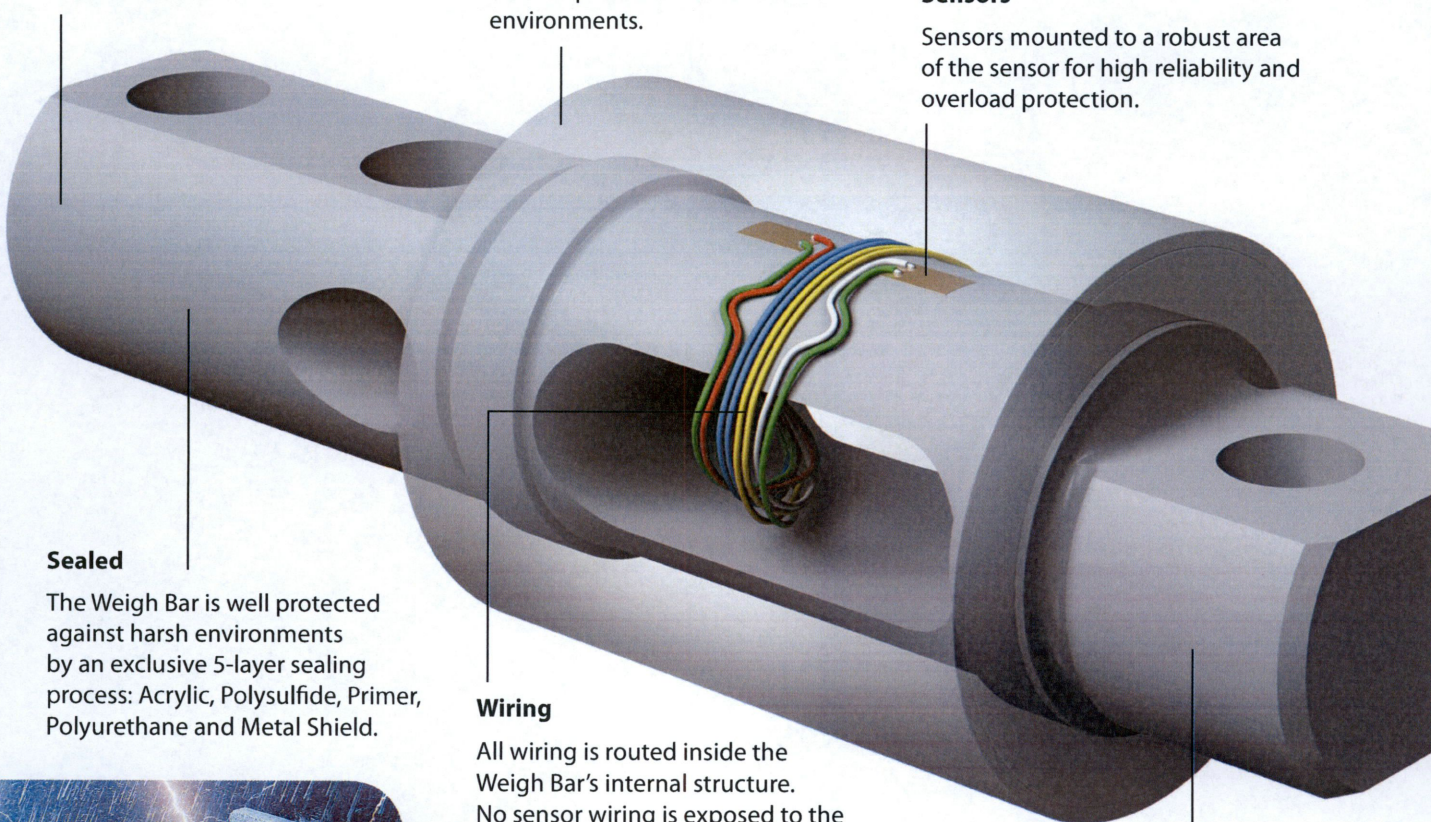
Fully welded NEMA 4X (IP68) cans on stainless steel Weigh Bars and 5 point sealing (IP67) potting compound on alloy steel Weigh Bars for protection in severe environments.

Hazardous Environments

Atex/Factory Mutual approved for use in instrumentally safe hazardous environments.

Sensors

Sensors mounted to a robust area of the sensor for high reliability and overload protection.



Sealed

The Weigh Bar is well protected against harsh environments by an exclusive 5-layer sealing process: Acrylic, Polysulfide, Primer, Polyurethane and Metal Shield.

Wiring

All wiring is routed inside the Weigh Bar's internal structure. No sensor wiring is exposed to the elements.

Accuracy

NTEP: Class III, 5,000 d;
Class III, 10,000 d

OIML: R60 7,000 d performance.

Steel Construction

Each Weigh Bar is milled from a solid piece of aircraft-quality alloy or stainless steel. Stainless steel Weigh Bars are welded with a pulse tig process.



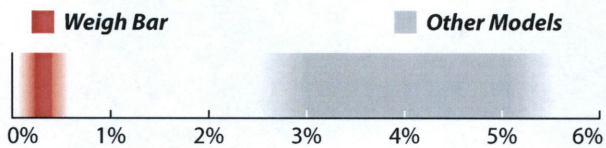


INDUSTRY APPLICATIONS

The Weigh Bar has proven itself over the past 20 years to be one of the world's most robust weight transducers manufactured today with over 500,000 installations world-wide.

- **Truck scales**
- **Floor and deck scales**
 - Petro/chemical
 - Food processing
 - Pharmaceuticals
- **Bin, hopper, tank weighing**
 - Petro/chemical tanks
 - Agricultural applications
 - Food processing

LOW FAILURE RATE



The IP67 Weigh Bar design provides inherent strength and overload protection, while also providing accuracy and high reliability. A significant contributor for this is the positioning of the gauges on the outside of the Weigh Bar.

More robust than a shear beam load cell for a given output – a shear beam load cell will reach its peak fatigue point much sooner than a Weigh Bar.

100 LBS TO 1,000,000 LBS

The Weigh Bar design makes it possible to produce sensors for a wide variety of applications. We've made highly accurate Weigh Bars with capacities of 100 lbs, all the way up to massive Weigh Bars for the petro-chemical industry with 1,000,000 lbs of capacity.



WEIGH BAR HISTORY

In 1965 the company Art's-Way Manufacturing, Inc. of Armstrong, Iowa approached New Jersey engineer Dick Bradley about designing a transducer and on-board weighing system for livestock feed grinder/mixers. By 1968 Bradley had developed the Weigh Bar, and in 1969 Art's-Way marketed the first grinder/mixer with a working scale system.

In 1971 Weigh-Tronix incorporated as a subsidiary of Art's-Way, and began selling scale systems to farm equipment manufacturers.

In 1973 a Weigh-Tronix deck scale was the first all electronic scale to be approved for trade by the National Bureau of Standards.

Today the Avery Weigh-Tronix Weigh Bar is still ahead of its time, with an unmatched reputation for robust reliability and accuracy.



PRINCIPLES OF OPERATION

Measuring Applied Load

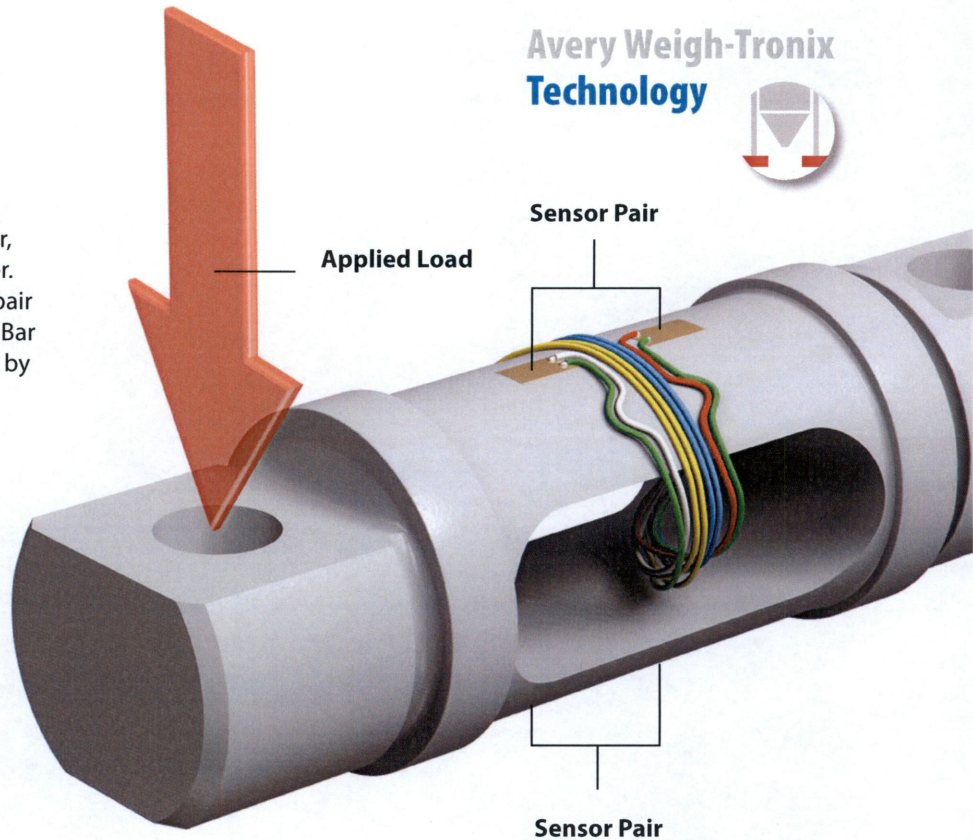
The Weigh Bar steel structure acts as a cantilever, unsuspended on one end and fixed on the other. A load is applied to the unsuspended end. The pair of sensors attached to the outside of the Weigh Bar detect strain in the bar. This strain is interpreted by indicator electronics to display a weight.

Note that most Weigh-Bars have two sensor pairs, top and bottom to provide an amplification factor and simplify electronics.

Error Reduction

The unique design of the Weigh Bar allows simple calculations to be made by the indicator, eliminating several types of errors:

- **End Loading** – When an end load is applied to the Weigh Bar, it is subjected to a uniform compressive strain throughout its length – all sensors detect the same strain.
- **Torsion Effects** – When torque is applied to the Weigh Bar, a uniform torsional shear strain is developed through the length of the bar – both sensors detect the same strain.
- **Side Loading** – When a side load is applied to the Weigh Bar, it acts as a beam, but at a 90-degree angle. When this occurs, the neutral axis of the beam (the point in the beam where neither tension or compression occur) falls directly under the center of the strain gauges. No apparent strain is seen by the gauges.
- **Vibration** – The fine grain structure of aircraft quality steel is resistant to vibration fatigue and induced error. The strain gauges and adhesive used are also vibration and fatigue proven.



The Weigh Bar is used globally in a wide range of weighing applications.



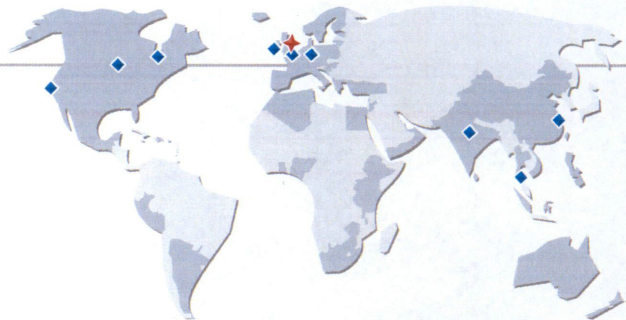
Avery Weigh-Tronix

Avery Weigh-Tronix - USA

1000 Armstrong Drive,
Fairmont, MN 56031-1439 USA
usinfo@awtxglobal.com
Toll-Free: (800) 533-0456
Phone: (507) 238-4461

Avery Weigh-Tronix - UK

Foundry Lane, Smethwick,
West Midlands B66 2LP UK
info@awtxglobal.com
Phone: +44 (0) 8453 66 77 88
Fax: +44 (0) 121 224 8183



Please call us or visit www.averyweigh-tronix.com for your nearest Avery Weigh-Tronix distributor



Portable Vehicle Scale (PVS) Installation Guide

1.1 Introduction

The Avery Weigh-Tronix Portable Vehicle Scale (PVS) is a modular foundation system, see Figure 1.1, which allows for rapid installation of a BridgeMont BMS-P or SteelBridge IMXT-P truck scale in situations where a permanent scale foundation is not desired.

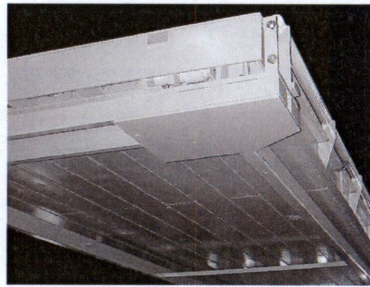


Figure 1.1 Modular foundation

The system can be installed in just 2-4 hours on any level and stable surface, including: bridge planks, concrete piers or blocks, a concrete slab or swamp pad. The self-contained modular sections eliminate costly site preparation. Each section incorporates built-in Weigh Bar[®] weight sensors, leveling pads and dedicated conduit runs for fast setup and disassembly.

1.2 Installation

The site must be prepared for the modular scale sections. The sections must rest on bridge planks, concrete piers or blocks, a concrete slab or swamp pads.

Set the base section down on the supports. Figure 1.2 shows a base section. It has a bulkhead on one end and receiving holes for the next sections hooks on the other end.

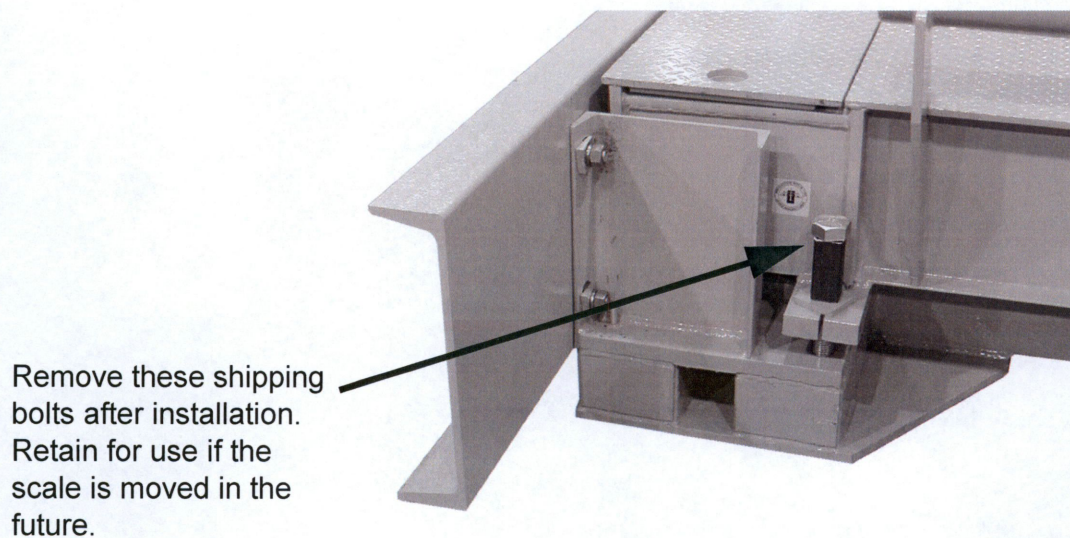


Figure 1.2 End section of scale

Lower the next section adjacent to the first and hang the new section's end hooks in the receivers of the first section. See Figure 1.3.



Figure 1.3 Hook receiver

Align the frames and bolt together. Figure 1.4 shows two sections bolted together with one of the two bolts used.

Remove these shipping bolts after installation. Retain for use if the scale is moved in the future.

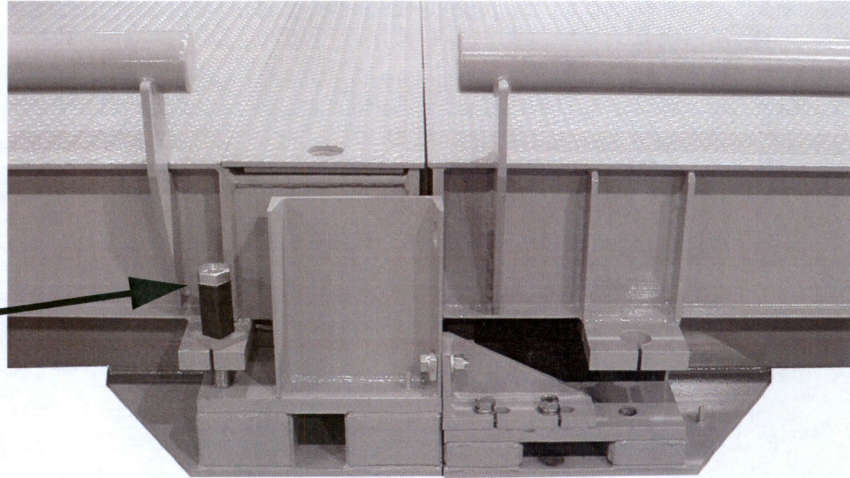


Figure 1.4 Sections bolted together

Continue assembling the deck sections to the end of the scale. After the deck is complete, [Figure 1.5](#), continue installing the scale using the appropriate installation instructions for your BMS or IMXT scale.

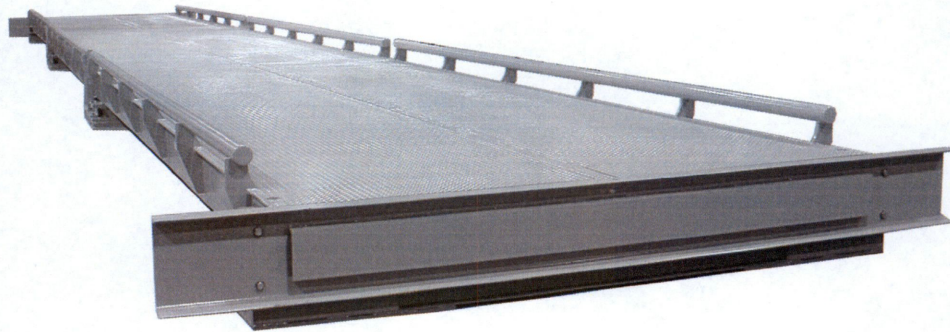


Figure 1.5 Completed scale assembly

Avery Weigh-Tronix

Avery Weigh-Tronix USA

1000 Armstrong Dr.
Fairmont MN 56031 USA
Tel: 507-238-4461
Fax: 507-238-4195
Email: usinfo@awtxglobal.com
www.wtxweb.com

Avery Weigh-Tronix UK

Foundry Lane,
Smethwick, West Midlands,
England B66 2LP
Tel: +44 (0) 8453 66 77 88
Fax: +44 (0)121 224 8183
Email: info@awtxglobal.com
www.averyweigh-tronix.com

Weigh-Tronix Canada, ULC

217 Brunswick Boulevard
Pointe-Claire, QC
Canada, H9R 4R7
Tel: 514-695-0380
Fax: 514-695-6820
www.averyweigh-tronix.ca

PORTABLE TRUCK SCALE

BridgeMont BMS-P
SteelBridge IMXT-P

Technical Specification



GENERAL

Avery Weigh-Tronix portable scales go anywhere there is an immediate need for on-site truck weighing — mining and timber operations, road construction, asphalt facilities, quarries or construction sites. They can also quickly fill the gap when other scales fail.

Focus on productivity with same-day setup and operation.

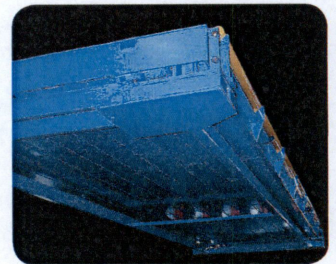
Avery Weigh-Tronix Portable Truck Scales can be installed in just 2–4 hours on any stable surface, including: bridge planks, concrete piers or blocks, a concrete slab or swamp pad. The self-contained modular sections eliminate costly site preparation. Each section incorporates built-in Weigh Bar® weight sensors, robust sub-frame with large pier assemblies, and dedicated conduit runs for fast setup and tear down.

FEATURES & BENEFITS

Durability for the long haul — Nowhere is structural integrity more critical than in a portable truck scale. The ability to provide accurate measurement under extreme environmental conditions, frequent moves and heavy loading requires exceptional strength and engineering. Avery Weigh-Tronix Portable scales meet the challenge with sandwich steel construction: a checkered steel deck, supported by full-length structural steel members and stabilized with a complete bottom plate. 100% continuous welding throughout the structure seals it against moisture and premature corrosion.

Proven Weigh Bar® reliability — In a three-year study on, the Weigh Bar exhibited failure rate of just 0.3% — compared with a national industry average of 3 to 5% for load cells. To add to the overall reliability, all Weigh Bar cable is sheathed in stainless steel and internally routed through steel conduit for superior protection against moisture, wear and rodents.

Permanent installation — When a temporary need turns into a long-term application, there's no need to purchase a new scale. All models of the BMS-P and IMXT-P can be readily converted to permanent, low-profile truck scales.



Fully-enclosed sandwich steel construction for greater strength and corrosion protection.



Modular sections bolt together at the installation site.



Installs on any stable surface — fast assembly and leveling.



SPECIFICATIONS

	BMS-P	IMXT-P
Dual Tandem Axle Rating	90,000 lb	90,000 lb
Concentrated Load Capacity (CLC)	45 tons	45 tons
"r" Factor Rating	2.65	2.65
Weight Sensors (Weigh Bars) Capacity:	75K	75K
Top Plate: Checkered	1/4"	3/8"
Bottom Plate	1/8"	3/16"

Elevation Profile: 19 inches nominal

Junction Boxes: Stainless steel NEMA 4X with Gore vent

Surge Voltage Protection: Standard

Cable: Stainless steel sheathed Weigh Bar cable and 50' interface cable

Bulkheads:

- › 13' structural "C" channel type bulkheads (one pair) included with 10' wide models
- › 14' structural "C" channel type bulkheads (one pair) included with 11' wide models

Operating Environment: -30° to 130° F

Approvals –

NTEP, Cert. Of Conf. #97-074 (BMS-P)
#98-040 (IMXT-P)

Approved up to 14' width

Approved for livestock weighing

Warranty –

5 years - Weigh Bars (BMS-P and IMXT-P)

10 years - Weighbridge Structure (BMS-P)

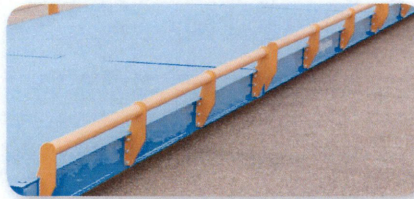
15 years - Weighbridge Structure (IMXT - P)

OPTIONS

- › Battery operated or AC powered instrumentation
- › Bolt-on guide rails
- › Guide posts
- › Custom lengths and widths available
- › LED Remote Displays
- › Printers

ZM305 INDICATOR

The ZM305 Series Indicator with truck scale In/Out software application simplifies vehicle weighing. Track up to 250 different open transactions and store up to 1,000 completed transactions. You can also store up to 500 tare weights. Other instruments are available with a wide range of features and functionality.



GUIDE RAILS AND POSTS

Extreme-duty guide rails are bolted in place to provide a strong, attractive barrier against accidental drive-offs. Tubing is gentle on truck wheels and is offset to allow full use of deck. Yellow paint is standard feature.



UNATTENDED SYSTEMS

Allows 24/7 scale availability. Can be customized with several hardware options such as loop detectors, ID readers, printers, traffic lights, and wireless communication.

BMS-P	IMXT-P	NOMINAL PLATFORM LENGTH (feet)	MODULES	WEIGH BARS	GROSS CAPACITY (tons)
BMS-P 201X	IMXT-P 20 x 10 or 11	20	1	4	45
BMS-P 241X	IMXT-P 24 x 10 or 11	24	1	4	45
BMS-P 401X	IMXT-P 40 x 10 or 11	40	2	6	90
BMS-P 471X	IMXT-P 47 x 10 or 11	47	2	6	90
BMS-P 601X	IMXT-P 60 x 10 or 11	60	3	8	135
BMS-P 701X	IMXT-P 70 x 10 or 11	70	3	8	135
BMS-P 801X	IMXT-P 80 x 10 or 11	80	4	10	135
BMS-P 931X	IMXT-P 93 x 10 or 11	93	4	10	135
BMS-P 1001X	IMXT-P 100 x 10 or 11	100	5	12	135

90,000lb CLC/DTA, 10' or 11' wide, 19" profile

Custom widths available by consulting factory

Avery Weigh-Tronix

www.averyweigh-tronix.com

Avery Weigh-Tronix is an ITW company



Avery Weigh-Tronix is a trademark of the Illinois Tool Works group of companies whose ultimate parent company is Illinois Tool Works Inc ("Illinois Tool Works"). Copyright © 2015 Illinois Tool Works. All rights reserved. This publication is issued to provide outline information only and may not be regarded as a representation relating to the products or services concerned. This publication was correct at the time of going to print, however Avery Weigh-Tronix reserves the right to alter without notice the specification, design, price or conditions of supply of any product or service at any time.

portableVS_spec_09786-0019.indd
V2 PN 09786-0019

Bauske, Shelly A.

From: Grangaard, Wayne
Sent: Tuesday, July 11, 2017 9:53 AM
To: Crockford, Konrad S.
Cc: Bauske, Shelly A.; Erickson, Kyle W.
Subject: RE: [Ext] Variance

Konrad, This looks fine. Where some portable scales are not designed to meet HB44 tolerances I'm sure this one is. It was my only concern. Since Weigh-Tronix typically paints the legal for trade decks blue and the not legal for trade ones gray, for one thing. This should work just fine if they do all they say they are. Thanks, Wayne

From: Crockford, Konrad S.
Sent: Monday, July 10, 2017 4:32 PM
To: Grangaard, Wayne <wgrangaard@nd.gov>
Cc: Bauske, Shelly A. <sbauske@nd.gov>; Erickson, Kyle W. <kyerickson@nd.gov>
Subject: FW: [Ext] Variance

Wayne,

Attached is a variance request from Schlumberger for two portable sales they want to install in the Williston area to be used for approximately 6 mo to 1 yr depending on their project length. They also say that the scale will be placed on a permanent foundation that meets all ND requirements to include approach and exit lengths. I have reviewed the information and see no reason for not issuing the variance. Please let me know your thoughts.

Thanks,

Konrad Crockford
Director of Compliance
North Dakota Public Service Commission
701-328-4097 kcrockford@nd.gov



From: Bauske, Shelly A.
Sent: Monday, July 03, 2017 14:16
To: Crockford, Konrad S. <kcrockford@nd.gov>
Subject: FW: [Ext] Variance

From: Brian Custer [<mailto:BCuster2@slb.com>]
Sent: Thursday, June 29, 2017 4:51 PM
To: Bauske, Shelly A.
Cc: Dylan Moses
Subject: FW: [Ext] Variance

CAUTION: This email originated from an outside source. Do not click links or open attachments unless you know they are safe.

Shelly,

Please see the attached variance request regarding a portable truck scale for Schlumberger in the western North Dakota region. All associated documents will show that these scales meet and/or exceed all ND requirements and all details are within the request. Rocky Mountain Scale Works has also had a certified drawing made via engineers from the factory to reflect all ND foundation requirements.

Thanks for your help in this matter.
I have cc'd Dylan if any questions arise.

Regards, BC

Brian Custer
E&C Project Manager
Schlumberger Technologies
Office: 303-218-3103
Cell: 318-218-8797
bcuster2@slb.com

**"Both optimists and pessimists contribute to society. The optimist invents the aeroplane, the pessimist the parachute."
George Bernard Shaw**

This transmission, email and any files transmitted with it, may be: (1) subject to the Attorney-Client Privilege, (2) an attorney work product, or (3) strictly confidential under federal or state law. If you are not the intended recipient of this message, you may not use, disclose, print, copy or disseminate this information. If you have received this transmission in error, notify the sender (only) and delete the message. This message may also be subject to disclosure under the North Dakota Open Records Laws.

Bauske, Shelly A.

From: Bauske, Shelly A.
Sent: Wednesday, July 12, 2017 5:40 PM
To: 'Brian Custer'
Cc: Dylan Moses; 'Crockford, Konrad S.'
Subject: RE: [Ext] Variance

Good Afternoon Brian

Please email me the address of the North Dakota site.

According to the North Dakota Secretary of State website, the business name registered to do business in North Dakota is Schlumberger Technology Corporation. Is this the name the company will be using at the North Dakota site?

If you have any questions, please contact me at 701-328-4070. Thank you.

Shelly Bauske
Public Service Commission
600 E Boulevard Ave Dept 408
Bismarck ND 58505-0480
701-328-4070
701-328-2410 (fax)
sbauske@nd.gov

From: Brian Custer [<mailto:BCuster2@slb.com>]
Sent: Thursday, June 29, 2017 4:51 PM
To: Bauske, Shelly A.
Cc: Dylan Moses
Subject: FW: [Ext] Variance

CAUTION: This email originated from an outside source. Do not click links or open attachments unless you know they are safe.

Shelly,

Please see the attached variance request regarding a portable truck scale for Schlumberger in the western North Dakota region. All associated documents will show that these scales meet and/or exceed all ND requirements and all details are within the request. Rocky Mountain Scale Works has also had a certified drawing made via engineers from the factory to reflect all ND foundation requirements.

Thanks for your help in this matter.
I have cc'd Dylan if any questions arise.

Regards, BC

Brian Custer
E&C Project Manager
Schlumberger Technologies
Office: 303-218-3103
Cell: 318-218-8797
bcuster2@slb.com

**"Both optimists and pessimists contribute to society. The optimist invents the aeroplane, the pessimist the parachute."
George Bernard Shaw**

Bauske, Shelly A.

From: Dylan Moses <dmoses@scales911.com>
Sent: Thursday, July 13, 2017 9:15 AM
To: Bauske, Shelly A.; 'Brian Custer'
Cc: 'Gil Martinez'; 'Stacy W Colvin'
Subject: RE: [Ext] Variance

CAUTION: This email originated from an outside source. Do not click links or open attachments unless you know they are safe.

Shelly,

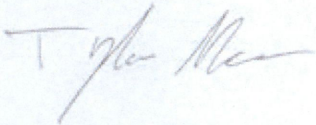
Below is the site address which is also included in the variance. Brian is out of service for the week so I am responding on his behalf. I have also included two Schlumberger representatives in this email that may be able to answer your other question of "According to the North Dakota Secretary of State website, the business name registered to do business in North Dakota is Schlumberger Technology Corporation. Is this the name the company will be using at the North Dakota site?"

If someone could please verify the states question in order to move the request along it would be greatly appreciated. Thank you everyone for the help on this.

Schlumberger Site Address

3451 Hwy 58
Fairview, MT 59221

Best Regards,



Dylan Moses
Eastern Branch Manager



a Rather Enterprises Inc. Company
2935 Stockyard Rd., Suite M3
Missoula, MT 59808

Eastern Montana Branch Office:

5535 Interstate Ave., Unit #1

Billings, MT 59101

Corporate Office: 406-543-5181

Cell Phone: 406-239-0228

Toll-free: 800-700-5048

Fax: 406-543-5182

E-Mail: Dylan@scales911.com

Web Site: www.weighbest.com

From: Bauske, Shelly A. [<mailto:sbauske@nd.gov>]

Sent: Wednesday, July 12, 2017 4:40 PM

To: Brian Custer <BCuster2@slb.com>

Cc: Dylan Moses <dmoses@scales911.com>; Crockford, Konrad S. <kcrockford@nd.gov>

Subject: RE: [Ext] Variance

Good Afternoon Brian

Please email me the address of the North Dakota site.

According to the North Dakota Secretary of State website, the business name registered to do business in North Dakota is Schlumberger Technology Corporation. Is this the name the company will be using at the North Dakota site?

If you have any questions, please contact me at 701-328-4070. Thank you.

Shelly Bauske

Public Service Commission

600 E Boulevard Ave Dept 408

Bismarck ND 58505-0480

701-328-4070

701-328-2410 (fax)

sbauske@nd.gov

From: Brian Custer [<mailto:BCuster2@slb.com>]

Sent: Thursday, June 29, 2017 4:51 PM

To: Bauske, Shelly A.

Cc: Dylan Moses

Subject: FW: [Ext] Variance

<p>CAUTION: This email originated from an outside source. Do not click links or open attachments unless you know they are safe.</p>
--

Shelly,

Please see the attached variance request regarding a portable truck scale for Schlumberger in the western North Dakota region. All associated documents will show that these scales meet and/or exceed all ND requirements and all details are within the request. Rocky Mountain Scale Works has also had a certified drawing made via engineers from the factory to reflect all ND foundation requirements.

Thanks for your help in this matter.
I have cc'd Dylan if any questions arise.

Regards, BC

Brian Custer
E&C Project Manager
Schlumberger Technologies
Office: 303-218-3103
Cell: 318-218-8797
bcuster2@slb.com

**“Both optimists and pessimists contribute to society. The optimist invents the aeroplane, the pessimist the parachute.”
George Bernard Shaw**

This transmission, email and any files transmitted with it, may be: (1) subject to the Attorney-Client Privilege, (2) an attorney work product, or (3) strictly confidential under federal or state law. If you are not the intended recipient of this message, you may not use, disclose, print, copy or disseminate this information. If you have received this transmission in error, notify the sender (only) and delete the message. This message may also be subject to disclosure under the North Dakota Open Records Laws.

Bauske, Shelly A.

From: Bauske, Shelly A.
Sent: Thursday, July 13, 2017 9:21 AM
To: 'Dylan Moses'; 'Brian Custer'
Cc: 'Gil Martinez'; 'Stacy W Colvin'; 'Crockford, Konrad S.'
Subject: RE: [Ext] Variance

Hi Dylan

Since the site address provided is a Montana address, do you have a North Dakota location address or driving directions to where the scales will be located?

Thank you.

From: Dylan Moses [<mailto:dmoses@scales911.com>]
Sent: Thursday, July 13, 2017 9:15 AM
To: Bauske, Shelly A.; 'Brian Custer'
Cc: 'Gil Martinez'; 'Stacy W Colvin'
Subject: RE: [Ext] Variance

CAUTION: This email originated from an outside source. Do not click links or open attachments unless you know they are safe.

Shelly,

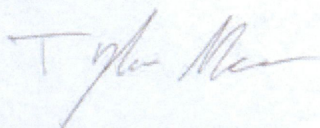
Below is the site address which is also included in the variance. Brian is out of service for the week so I am responding on his behalf. I have also included two Schlumberger representatives in this email that may be able to answer your other question of "According to the North Dakota Secretary of State website, the business name registered to do business in North Dakota is Schlumberger Technology Corporation. Is this the name the company will be using at the North Dakota site?"

If someone could please verify the states question in order to move the request along it would be greatly appreciated. Thank you everyone for the help on this.

Schlumberger Site Address

3451 Hwy 58
Fairview, MT 59221

Best Regards,



Dylan Moses
Eastern Branch Manager



a Rather Enterprises Inc. Company
2935 Stockyard Rd., Suite M3
Missoula, MT 59808

Eastern Montana Branch Office:

5535 Interstate Ave., Unit #1
Billings, MT 59101

Corporate Office: 406-543-5181
Cell Phone: 406-239-0228
Toll-free: 800-700-5048
Fax: 406-543-5182
E-Mail: Dylan@scales911.com
Web Site: www.weighbest.com

From: Bauske, Shelly A. [<mailto:sbauske@nd.gov>]
Sent: Wednesday, July 12, 2017 4:40 PM
To: Brian Custer <BCuster2@slb.com>
Cc: Dylan Moses <dmoses@scales911.com>; Crockford, Konrad S. <kcrockford@nd.gov>
Subject: RE: [Ext] Variance

Good Afternoon Brian

Please email me the address of the North Dakota site.

According to the North Dakota Secretary of State website, the business name registered to do business in North Dakota is Schlumberger Technology Corporation. Is this the name the company will be using at the North Dakota site?

If you have any questions, please contact me at 701-328-4070. Thank you.

Shelly Bauske
Public Service Commission
600 E Boulevard Ave Dept 408
Bismarck ND 58505-0480
701-328-4070
701-328-2410 (fax)
sbauske@nd.gov

From: Brian Custer [<mailto:BCuster2@slb.com>]
Sent: Thursday, June 29, 2017 4:51 PM
To: Bauske, Shelly A.
Cc: Dylan Moses
Subject: FW: [Ext] Variance

CAUTION: This email originated from an outside source. Do not click links or open attachments unless you know they are safe.

Shelly,

Please see the attached variance request regarding a portable truck scale for Schlumberger in the western North Dakota region. All associated documents will show that these scales meet and/or exceed all ND requirements and all details are within the request. Rocky Mountain Scale Works has also had a certified drawing made via engineers from the factory to reflect all ND foundation requirements.

Thanks for your help in this matter.
I have cc'd Dylan if any questions arise.

Regards, BC

Brian Custer
E&C Project Manager
Schlumberger Technologies
Office: 303-218-3103
Cell: 318-218-8797
bcuster2@slb.com

**“Both optimists and pessimists contribute to society. The optimist invents the aeroplane, the pessimist the parachute.”
George Bernard Shaw**

This transmission, email and any files transmitted with it, may be: (1) subject to the Attorney-Client Privilege, (2) an attorney work product, or (3) strictly confidential under federal or state law. If you are not the intended recipient of this message, you may not use, disclose, print, copy or disseminate this information. If you have received this transmission in error, notify the sender (only) and delete the message. This message may also be subject to disclosure under the North Dakota Open Records Laws.

35th St

Dore

35th St-NW

58

© 2017 Google
© 2017 Europa Technologies

Imagery Date: 5/29/2017

47°55'02.84" N 104°02'10.40"

Montana

North Dakota

35th St

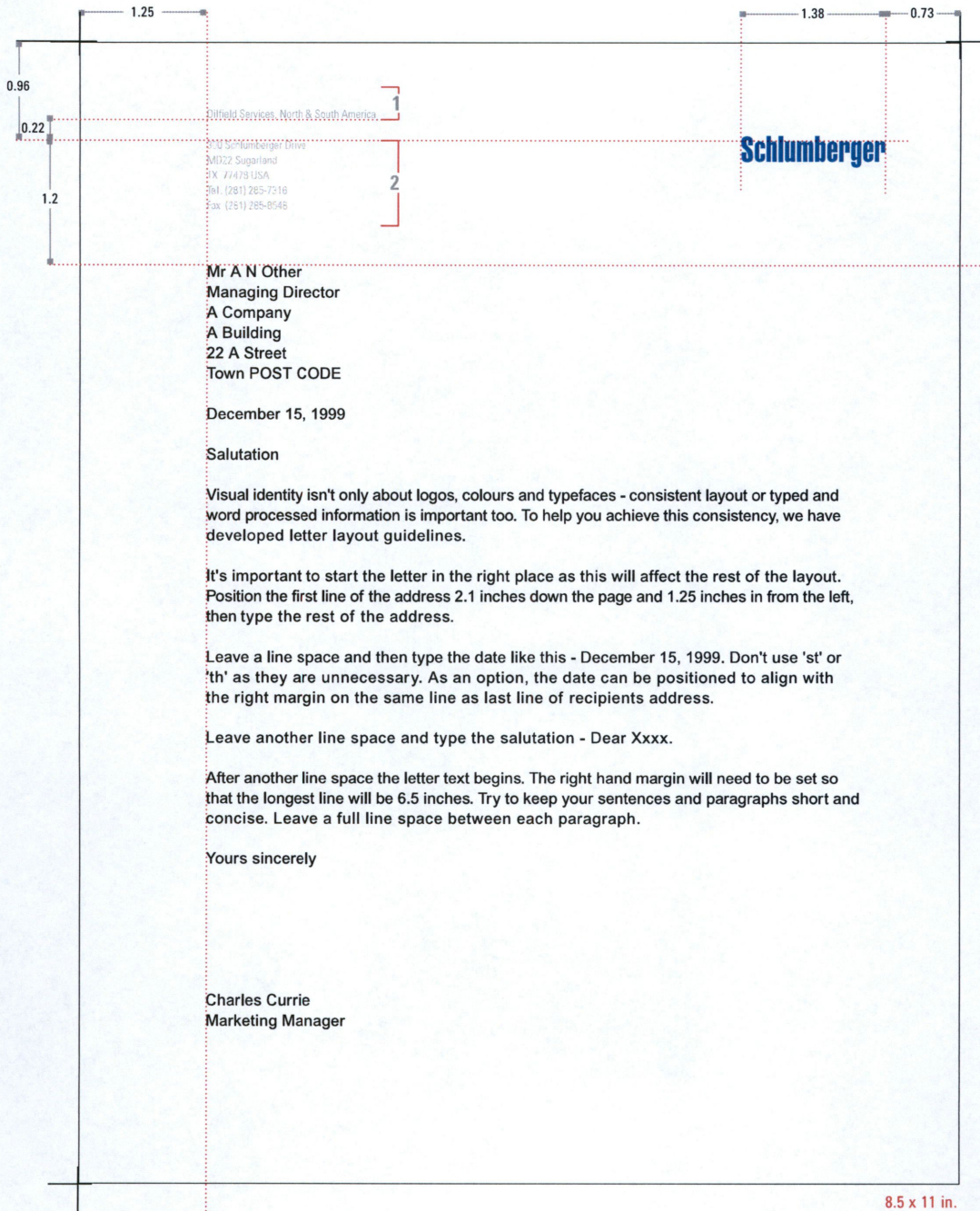
58

Dore

planned area for scale

35th





ALL MEASUREMENTS ARE IN INCHES.

■ TYPE

1 Business sector:

Font: **Univers 47 Condensed Light, u/lc, Ranged Left** Size: 8 point
 Leading: 10.5 point Tracking: 0 point Horizontal Scale: 100%

2 Legal entity (if required) followed by address and contact details:

Font: **Univers 47 Condensed Light, u/lc, Ranged Left** Size: 8 point
 Leading: 10.5 point Tracking: 0 point Horizontal Scale: 100%

■ COLOUR

Schlumberger Logo: **Pantone 280C**
 All other typesetting: **Pantone 431C**

NOTES

- LAYOUT: Information always appears in the order, size and position presented on the template
- POSITION OF LOGO: X-height of the "u" aligns with top of address block
- ADDRESS BLOCK: Should contain no more than 8 lines
- FINISHES: Only engraving or lithography is permitted for printing of stationery
- PAPER STOCK: Conqueror brilliant white wove 100gsm.

Bauske, Shelly A.

From: Brian Custer <BCuster2@slb.com>
Sent: Thursday, July 27, 2017 2:15 PM
To: Bauske, Shelly A.
Cc: Dylan Moses; Crockford, Konrad S.
Subject: RE: [Ext] Variance
Attachments: variance scale.jpg; scale variance.pdf; Schlumberger-Custer.pdf

CAUTION: This email originated from an outside source. Do not click links or open attachments unless you know they are safe.

Shelly, Dylan relayed to me what you were needing to complete the variance. See attached and let me know if additional info is required and if the letterhead template is sufficient.

Regards, BC

Brian Custer
E&C Project Manager
Schlumberger Technologies
Office: 303-218-3103
Cell: 318-218-8797
bcuster2@slb.com

“Both optimists and pessimists contribute to society. The optimist invents the aeroplane, the pessimist the parachute.”
George Bernard Shaw

From: Bauske, Shelly A. [<mailto:sbauske@nd.gov>]
Sent: Wednesday, July 12, 2017 4:40 PM
To: Brian Custer <BCuster2@slb.com>
Cc: Dylan Moses <dmoses@scales911.com>; Crockford, Konrad S. <kcrockford@nd.gov>
Subject: RE: [Ext] Variance

Good Afternoon Brian

Please email me the address of the North Dakota site.

According to the North Dakota Secretary of State website, the business name registered to do business in North Dakota is Schlumberger Technology Corporation. Is this the name the company will be using at the North Dakota site?

If you have any questions, please contact me at 701-328-4070. Thank you.

Shelly Bauske
Public Service Commission
600 E Boulevard Ave Dept 408

Bismarck ND 58505-0480
701-328-4070
701-328-2410 (fax)
sbauske@nd.gov

From: Brian Custer [<mailto:BCuster2@slb.com>]
Sent: Thursday, June 29, 2017 4:51 PM
To: Bauske, Shelly A.
Cc: Dylan Moses
Subject: FW: [Ext] Variance

CAUTION: This email originated from an outside source. Do not click links or open attachments unless you know they are safe.

Shelly,

Please see the attached variance request regarding a portable truck scale for Schlumberger in the western North Dakota region. All associated documents will show that these scales meet and/or exceed all ND requirements and all details are within the request. Rocky Mountain Scale Works has also had a certified drawing made via engineers from the factory to reflect all ND foundation requirements.

Thanks for your help in this matter.
I have cc'd Dylan if any questions arise.

Regards, BC

Brian Custer
E&C Project Manager
Schlumberger Technologies
Office: 303-218-3103
Cell: 318-218-8797
bcuster2@slb.com

**"Both optimists and pessimists contribute to society. The optimist invents the aeroplane, the pessimist the parachute."
George Bernard Shaw**

This transmission, email and any files transmitted with it, may be: (1) subject to the Attorney-Client Privilege, (2) an attorney work product, or (3) strictly confidential under federal or state law. If you are not the intended recipient of this message, you may not use, disclose, print, copy or disseminate this information. If you have received this transmission in error, notify the sender (only) and delete the message. This message may also be subject to disclosure under the North Dakota Open Records Laws.

Bauske, Shelly A.

From: Bauske, Shelly A.
Sent: Thursday, August 03, 2017 11:51 AM
To: 'Brian Custer'
Cc: Dylan Moses; Crockford, Konrad S.
Subject: RE: [Ext] Variance
Attachments: Schlumberger-Custer.pdf

Good Morning Brian

Thank you for emailing the requested information. I still have one question pertaining to the business name that you will be using in North Dakota. What is the business name that will be on the scale ticket? A variance can be issued only to a company that is registered to do business in North Dakota.

Currently the only Schlumberger company that is registered to do business in North Dakota is Schlumberger Technology Corporation.

If you have any questions, please contact me. Thank you.

Shelly Bauske
Public Service Commission
600 E Boulevard Ave Dept 408
Bismarck ND 58505-0480
701-328-4070
701-328-2410 (fax)
sbauske@nd.gov

From: Brian Custer [<mailto:BCuster2@slb.com>]
Sent: Thursday, July 27, 2017 2:15 PM
To: Bauske, Shelly A.
Cc: Dylan Moses; Crockford, Konrad S.
Subject: RE: [Ext] Variance

CAUTION: This email originated from an outside source. Do not click links or open attachments unless you know they are safe.

Shelly, Dylan relayed to me what you were needing to complete the variance. See attached and let me know if additional info is required and if the letterhead template is sufficient.

Regards, BC

Brian Custer
E&C Project Manager
Schlumberger Technologies
Office: 303-218-3103
Cell: 318-218-8797
bcuster2@slb.com

“Both optimists and pessimists contribute to society. The optimist invents the aeroplane, the pessimist the parachute.”
George Bernard Shaw

From: Bauske, Shelly A. [<mailto:sbauske@nd.gov>]
Sent: Wednesday, July 12, 2017 4:40 PM
To: Brian Custer <BCuster2@slb.com>
Cc: Dylan Moses <dmoses@scales911.com>; Crockford, Konrad S. <kcrockford@nd.gov>
Subject: RE: [Ext] Variance

Good Afternoon Brian

Please email me the address of the North Dakota site.

According to the North Dakota Secretary of State website, the business name registered to do business in North Dakota is Schlumberger Technology Corporation. Is this the name the company will be using at the North Dakota site?

If you have any questions, please contact me at 701-328-4070. Thank you.

Shelly Bauske
Public Service Commission
600 E Boulevard Ave Dept 408
Bismarck ND 58505-0480
701-328-4070
701-328-2410 (fax)
sbauske@nd.gov

From: Brian Custer [<mailto:BCuster2@slb.com>]
Sent: Thursday, June 29, 2017 4:51 PM
To: Bauske, Shelly A.
Cc: Dylan Moses
Subject: FW: [Ext] Variance

CAUTION: This email originated from an outside source. Do not click links or open attachments unless you know they are safe.

Shelly,

Please see the attached variance request regarding a portable truck scale for Schlumberger in the western North Dakota region. All associated documents will show that these scales meet and/or exceed all ND requirements and all details are within the request. Rocky Mountain Scale Works has also had a certified drawing made via engineers from the factory to reflect all ND foundation requirements.

Thanks for your help in this matter.
I have cc'd Dylan if any questions arise.

Regards, BC

Brian Custer
E&C Project Manager
Schlumberger Technologies
Office: 303-218-3103
Cell: 318-218-8797
bcuster2@slb.com

“Both optimists and pessimists contribute to society. The optimist invents the aeroplane, the pessimist the parachute.”
George Bernard Shaw

This transmission, email and any files transmitted with it, may be: (1) subject to the Attorney-Client Privilege, (2) an attorney work product, or (3) strictly confidential under federal or state law. If you are not the intended recipient of this message, you may not use, disclose, print, copy or disseminate this information. If you have received this transmission in error, notify the sender (only) and delete the message. This message may also be subject to disclosure under the North Dakota Open Records Laws.

Bauske, Shelly A.

From: Brian Custer <BCuster2@slb.com>
Sent: Friday, August 11, 2017 12:20 PM
To: Bauske, Shelly A.
Cc: Dylan Moses; Crockford, Konrad S.
Subject: RE: [Ext] Variance

CAUTION: This email originated from an outside source. Do not click links or open attachments unless you know they are safe.

Schlumberger Technology is correct.
Let me know of anything else.
Thanks

Regards, BC

Brian Custer
E&C Project Manager
Schlumberger Technologies
Office: 303-218-3103
Cell: 318-218-8797
bcuster2@slb.com

“Both optimists and pessimists contribute to society. The optimist invents the aeroplane, the pessimist the parachute.”
George Bernard Shaw

From: Bauske, Shelly A. [<mailto:sbauske@nd.gov>]
Sent: Thursday, August 03, 2017 10:51 AM
To: Brian Custer <BCuster2@slb.com>
Cc: Dylan Moses <dmoses@scales911.com>; Crockford, Konrad S. <kcrockford@nd.gov>
Subject: RE: [Ext] Variance

Good Morning Brian

Thank you for emailing the requested information. I still have one question pertaining to the business name that you will be using in North Dakota. What is the business name that will be on the scale ticket? A variance can be issued only to a company that is registered to do business in North Dakota.

Currently the only Schlumberger company that is registered to do business in North Dakota is Schlumberger Technology Corporation.

If you have any questions, please contact me. Thank you.

Shelly Bauske
Public Service Commission

600 E Boulevard Ave Dept 408
Bismarck ND 58505-0480
701-328-4070
701-328-2410 (fax)
sbauske@nd.gov

From: Brian Custer [<mailto:BCuster2@slb.com>]
Sent: Thursday, July 27, 2017 2:15 PM
To: Bauske, Shelly A.
Cc: Dylan Moses; Crockford, Konrad S.
Subject: RE: [Ext] Variance

CAUTION: This email originated from an outside source. Do not click links or open attachments unless you know they are safe.

Shelly, Dylan relayed to me what you were needing to complete the variance. See attached and let me know if additional info is required and if the letterhead template is sufficient.

Regards, BC

Brian Custer
E&C Project Manager
Schlumberger Technologies
Office: 303-218-3103
Cell: 318-218-8797
bcuster2@slb.com

“Both optimists and pessimists contribute to society. The optimist invents the aeroplane, the pessimist the parachute.”
George Bernard Shaw

From: Bauske, Shelly A. [<mailto:sbauske@nd.gov>]
Sent: Wednesday, July 12, 2017 4:40 PM
To: Brian Custer <BCuster2@slb.com>
Cc: Dylan Moses <dmoses@scales911.com>; Crockford, Konrad S. <kcrockford@nd.gov>
Subject: RE: [Ext] Variance

Good Afternoon Brian

Please email me the address of the North Dakota site.

According to the North Dakota Secretary of State website, the business name registered to do business in North Dakota is Schlumberger Technology Corporation. Is this the name the company will be using at the North Dakota site?

If you have any questions, please contact me at 701-328-4070. Thank you.

Shelly Bauske
Public Service Commission
600 E Boulevard Ave Dept 408
Bismarck ND 58505-0480
701-328-4070
701-328-2410 (fax)
sbauske@nd.gov

From: Brian Custer [<mailto:BCuster2@slb.com>]
Sent: Thursday, June 29, 2017 4:51 PM
To: Bauske, Shelly A.
Cc: Dylan Moses
Subject: FW: [Ext] Variance

CAUTION: This email originated from an outside source. Do not click links or open attachments unless you know they are safe.

Shelly,

Please see the attached variance request regarding a portable truck scale for Schlumberger in the western North Dakota region. All associated documents will show that these scales meet and/or exceed all ND requirements and all details are within the request. Rocky Mountain Scale Works has also had a certified drawing made via engineers from the factory to reflect all ND foundation requirements.

Thanks for your help in this matter.
I have cc'd Dylan if any questions arise.

Regards, BC

Brian Custer
E&C Project Manager
Schlumberger Technologies
Office: 303-218-3103
Cell: 318-218-8797
bcuster2@slb.com

“Both optimists and pessimists contribute to society. The optimist invents the aeroplane, the pessimist the parachute.”
George Bernard Shaw

This transmission, email and any files transmitted with it, may be: (1) subject to the Attorney-Client Privilege, (2) an attorney work product, or (3) strictly confidential under federal or state law. If you are not the intended recipient of this message, you may not use, disclose, print, copy or disseminate this information. If you have received this transmission in error, notify the sender (only) and delete the message. This message may also be subject to disclosure under the North Dakota Open Records Laws.

Bauske, Shelly A.

From: Brian Custer <BCuster2@slb.com>
Sent: Thursday, June 29, 2017 4:51 PM
To: Bauske, Shelly A.
Cc: Dylan Moses
Subject: FW: [Ext] Variance
Attachments: AWT77-506657.pdf; Variance Request Portable Rental Scales ND.docx; WeighBar_L_500217.pdf; portable_vehicle_scale_i_en_29797_0014.pdf; portable_spec_09786-0019.pdf

CAUTION: This email originated from an outside source. Do not click links or open attachments unless you know they are safe.

Shelly,

Please see the attached variance request regarding a portable truck scale for Schlumberger in the western North Dakota region. All associated documents will show that these scales meet and/or exceed all ND requirements and all details are within the request. Rocky Mountain Scale Works has also had a certified drawing made via engineers from the factory to reflect all ND foundation requirements.

Thanks for your help in this matter.
I have cc'd Dylan if any questions arise.

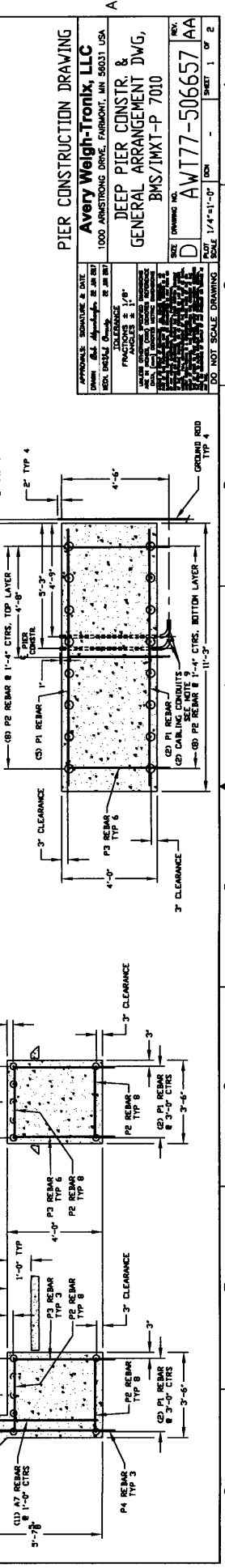
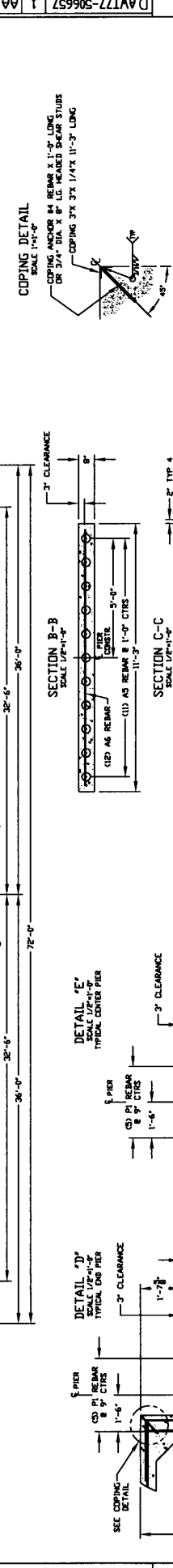
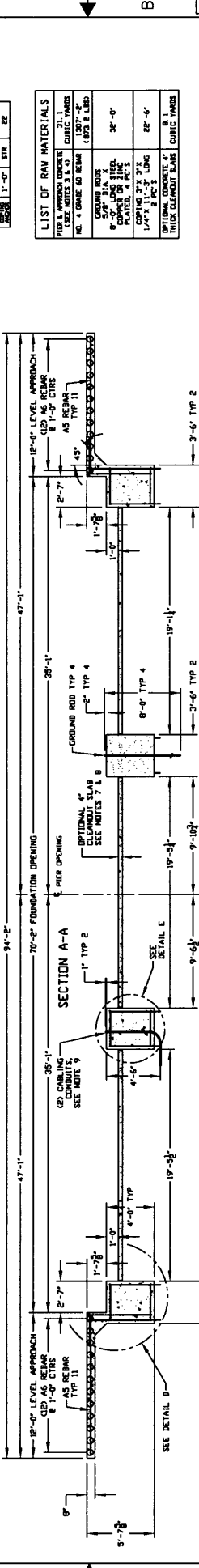
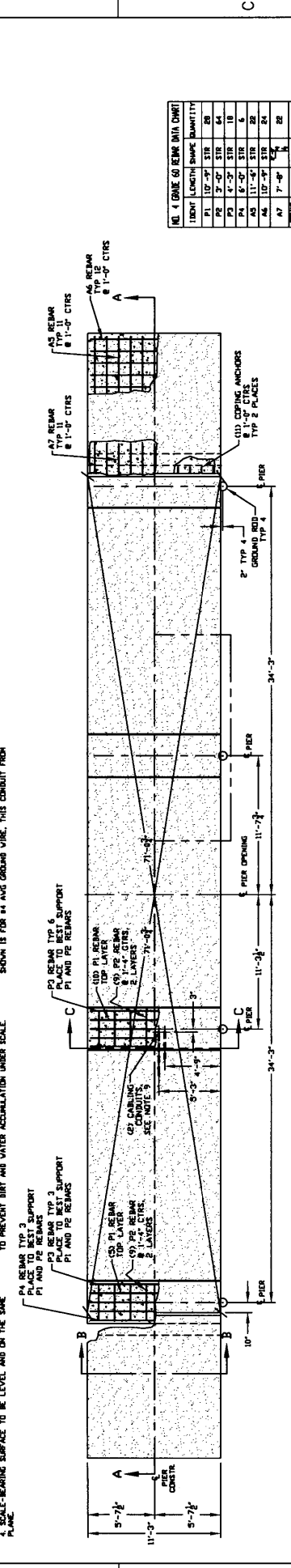
Regards, BC

Brian Custer
E&C Project Manager
Schlumberger Technologies
Office: 303-218-3103
Cell: 318-218-8797
bcuster2@slb.com

**"Both optimists and pessimists contribute to society. The optimist invents the aeroplane, the pessimist the parachute."
George Bernard Shaw**

NOTES

- MINIMUM SOIL BEARING CAPACITY OF 3,000 POUNDS PER SQUARE FOOT SHALL BE MAINTAINED THROUGHOUT CONSTRUCTION. THE CONTRACTOR SHALL BE RESPONSIBLE FOR OBTAINING ALL NECESSARY PERMITS AND APPROVALS FROM ALL AGENCIES NECESSARY TO PROVIDE A STABLE BASE.
- FOUNDATION MUST EXTEND A MINIMUM OF 6" BELOW THE FROST PENETRATION LINE & BE FOUNDED ON UNDISTURBED GROUND.
- PIER CONCRETS TO HAVE A 28-DAY COMPRESSIVE STRENGTH OF 3,000 POUNDS PER SQUARE INCH.
- APPROACH-END WALLS ARE TO BE LEVEL AND ON THE SAME PLANE WITHIN 1/8".
- WITH CLEAN-OUT SLABS CONSTRUCTED AS SHOWN, WORKING REQUIREMENTS INDICATE ADDITIONAL CLEARANCE. LOWER THE CLEAN-OUT SLABS MAY BE NECESSARY WITH 8" & 4" VIBES MEN.
- LOCATION OF CARLING CONDUIT FOR CONNECTION OF 1/2" DIA. INTO SCALE-BORE NEW FIRM SCALE INDICATOR CONDUIT MUST BE WITHIN METAL CONDUIT. SECOND CONDUIT SHOWN IS FOR 1/2" DIA. GROUND WIRE. THIS CONDUIT FROM
- APPROACH-END WALLS ARE TO BE LEVEL AND ON THE SAME PLANE WITHIN 1/8".
- WITH CLEAN-OUT SLABS CONSTRUCTED AS SHOWN, WORKING REQUIREMENTS INDICATE ADDITIONAL CLEARANCE. LOWER THE CLEAN-OUT SLABS MAY BE NECESSARY WITH 8" & 4" VIBES MEN.
- LOCATION OF CARLING CONDUIT FOR CONNECTION OF 1/2" DIA. INTO SCALE-BORE NEW FIRM SCALE INDICATOR CONDUIT MUST BE WITHIN METAL CONDUIT. SECOND CONDUIT SHOWN IS FOR 1/2" DIA. GROUND WIRE. THIS CONDUIT FROM
- APPROACH-END WALLS ARE TO BE LEVEL AND ON THE SAME PLANE WITHIN 1/8".
- WITH CLEAN-OUT SLABS CONSTRUCTED AS SHOWN, WORKING REQUIREMENTS INDICATE ADDITIONAL CLEARANCE. LOWER THE CLEAN-OUT SLABS MAY BE NECESSARY WITH 8" & 4" VIBES MEN.
- LOCATION OF CARLING CONDUIT FOR CONNECTION OF 1/2" DIA. INTO SCALE-BORE NEW FIRM SCALE INDICATOR CONDUIT MUST BE WITHIN METAL CONDUIT. SECOND CONDUIT SHOWN IS FOR 1/2" DIA. GROUND WIRE. THIS CONDUIT FROM



NO.	DATE	BY	DATE	APP.
1				
2				
3				
4				
5				
6				
7				
8				

NO.	DATE	BY	DATE	APP.
1				
2				
3				
4				
5				
6				
7				
8				

NO.	DATE	BY	DATE	APP.
1				
2				
3				
4				
5				
6				
7				
8				

NO.	DATE	BY	DATE	APP.
1				
2				
3				
4				
5				
6				
7				
8				

NO.	DATE	BY	DATE	APP.
1				
2				
3				
4				
5				
6				
7				
8				

NO.	DATE	BY	DATE	APP.
1				
2				
3				
4				
5				
6				
7				
8				

NO.	DATE	BY	DATE	APP.
1				
2				
3				
4				
5				
6				
7				
8				

NO.	DATE	BY	DATE	APP.
1				
2				
3				
4				
5				
6				
7				
8				

NO.	DATE	BY	DATE	APP.
1				
2				
3				
4				
5				
6				
7				
8				

NO.	DATE	BY	DATE	APP.
1				
2				
3				
4				
5				
6				
7				
8				

NO.	DATE	BY	DATE	APP.
1				
2				
3				
4				
5				
6				
7				
8				

NO.	DATE	BY	DATE	APP.
1				
2				
3				
4				
5				
6				
7				
8				

NO.	DATE	BY	DATE	APP.
1				
2				
3				
4				
5				
6				
7				
8				

NO.	DATE	BY	DATE	APP.
1				
2				
3				
4				
5				
6				
7				
8				

NO.	DATE	BY	DATE	APP.
1				
2				
3				
4				
5				
6				
7				
8				

NO.	DATE	BY	DATE	APP.
1				
2				
3				
4				
5				
6				
7				
8				

NO.	DATE	BY	DATE	APP.
1				
2				
3				
4				
5				
6				
7				
8				

NO.	DATE	BY	DATE	APP.
1				
2				
3				
4				
5				
6				
7				
8				

NO.	DATE	BY	DATE	APP.
1				
2				
3				
4				
5				
6				
7				
8				

NO.	DATE	BY	DATE	APP.
1				
2				
3				
4				
5				
6				
7				
8				

NO.	DATE	BY	DATE	APP.
1				
2				
3				
4				
5				
6				
7				
8				

NO.	DATE	BY	DATE	APP.
1				
2				
3				
4				
5				
6				
7				
8				

NO.	DATE	BY	DATE	APP.
1				
2				
3				
4				
5				
6				
7				
8				

NO.	DATE	BY	DATE	APP.
1				
2				
3				
4				
5				
6				
7				
8				

NO.	DATE	BY	DATE	APP.
1				
2				
3				
4				
5				
6				
7				
8				

NO.	DATE	BY	DATE	APP.
1				
2				
3				
4				
5				
6				
7				
8				

NO.	DATE	BY	DATE	APP.
1				
2				
3				
4				
5				
6				
7				
8				

NO.	DATE	BY	DATE	APP.
1				
2				
3				
4				
5				
6				
7				
8				

NO.	DATE	BY	DATE	APP.
1				
2				
3				
4				
5				
6				
7				
8				

NO.	DATE	BY	DATE	APP.
1				
2				
3				
4				
5				
6				
7				
8				

NO.	DATE	BY	DATE	APP.
1				
2				

