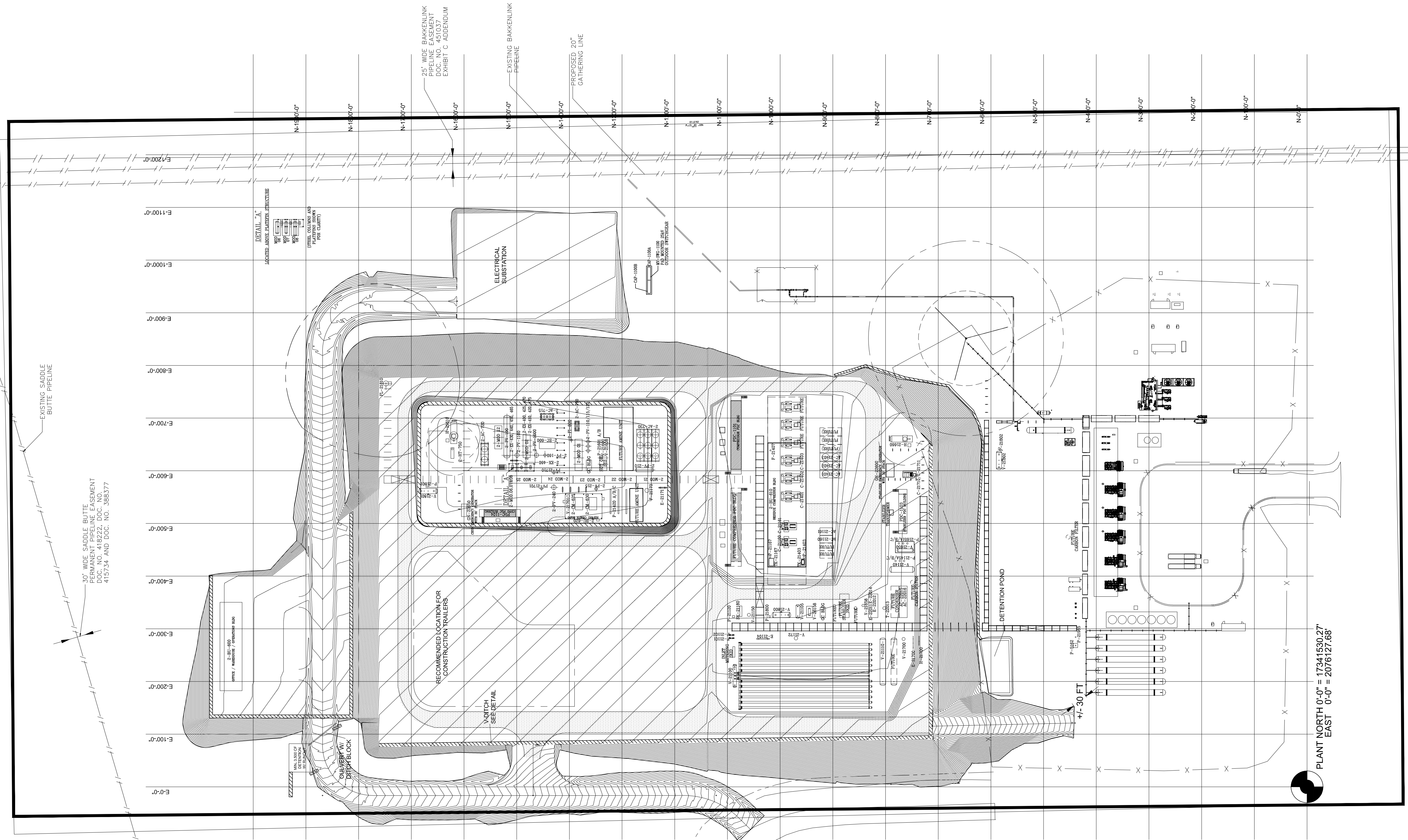
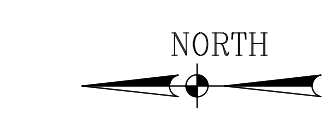


Updated Site Plot Plans

Jun 04, 2018 - 4:19pm D:\211044\VC BEAR DEN GAS PLANT\2130 Piping Design\Plot Plans\FC-06-04-18.dwg



- AREA 00 UNDERGROUND**
- AREA 51 INLET & 52 STABILIZER**
- AC-21160 OVERHEAD COOLER No.2
 - AC-21161 OVERHEAD COOLER No.2
 - AC-21401 RESIDUE GAS COOLER No.1
 - AC-21402 RESIDUE GAS COOLER No.2
 - AC-21403 RESIDUE GAS COOLER No.3
 - AC-22015/16 PRODUCT COOLER/STABILIZER DVHD CONDENSER
 - C-21160 OVERHEAD COMPRESSOR No.1
 - C-21161 OVERHEAD COMPRESSOR No.2
 - C-21401 RESIDUE COMPRESSOR No.1
 - C-21402 RESIDUE COMPRESSOR No.2
 - C-21403 RESIDUE COMPRESSOR No.3
 - C-21710/21711 INSTRUMENT AIR COMPRESSOR
 - E-21104 HP CONDENSATE EXCHANGER
 - E-21700 FUEL GAS HEATER
 - E-22011 DEETHANIZER REBOILER
 - E-22012 FEED/BOTTOMS EXCHANGER
 - E-22014 STABILIZER REBOILER
 - F-21101 CONDENSATE FILTER
 - F-21102 CONDENSATE FILTER
 - F-21407 RESIDUE GAS COALESCER
 - GN-22600 STABILIZER GENERATOR
 - H-21660 STABILIZER THERMAL FLUID HEATER
 - P-21700 STARTUP FUEL GAS HEATER
 - P-21120 TIER 1 METHANOL INJECTION PUMP
 - P-5162 STABILIZER NGL PIPELINE PUMP
 - P-21145A/B/C STABILIZER NGL BOOSTER PUMPS
 - P-21167 COMPRESSOR SUMP TANK PUMP
 - P-21403 LUBE OIL PUMP
 - P-2150A/B STABILIZER HOT OIL PUMPS
 - P-21800 STABILIZER FLARE PUMP
 - P-21985 NGL RETURN PUMP
 - SK-21180 TARGA METERING SKID
 - T-22013 STABILIZER TOWER
 - T-22010 DEETHANIZER TOWER
 - TK-21403 COMPRESSOR LUBE OIL TANK
 - TK-21167 COMPRESSOR SUMP TANK
 - V-21100 INLET SLUG CATCHER
 - V-21105 HP SEPARATOR
 - V-21110 CONDENSATE SURGE TANK
 - V-21140 STABILIZER NGL SURGE DRUM
 - V-21150 DH COMPRESSOR SUCTION SCRUBBER
 - V-21172 RAW GAS SEPARATOR
 - V-21650 STABILIZER HOT OIL EXPANSION DRUM
 - V-21658 STABILIZER HOT OIL RELIEF DRUM
 - V-21700 FUEL GAS SCRUBBER
 - V-21800 STABILIZER FLARE KNOCKOUT DRUM
 - WL-112 PIG LAUNCHER (EXISTING)
 - WL-114 PIG LAUNCHER (EXISTING)
 - WR-111 PIG RECEIVER (EXISTING)

- AREA 53 REFRIGERANT**
- 2-AC-730 REFRIGERANT CONDENSER
 - 2-PV-210 REFRIGERANT SURGE DRUM
- HOT OIL SYSTEM**
- P-21601A/B CRYO HOT OIL PUMPS
 - V-21600 CRYO HOT OIL EXPANSION DRUM
 - V-21608 CRYO HOT OIL RELIEF DRUM

- AREA 54 PROCESS**
- V-21710 SYSTEM FUEL GAS SCRUBBER
 - 2-AC-710 REGENERATION GAS COOLER
 - 2-AC-715 EXPANDER/COMPRESSOR DISCHARGE COOLER
 - 2-EC-600 EXPANDER/COMPRESSOR
- PLATEFIN:**
- 2-EX-430 PLATEFIN HEFC SIDE HEATER
 - 2-EX-440 PLATEFIN HEFC REBOILER
 - 2-EX-450 PLATEFIN PRODUCT EXCHANGER
 - 2-EX-465 PLATEFIN FEED GAS CHILLER
- PLATEFIN:**
- 2-EX-400 PLATEFIN GAS/GAS EXCHANGER
 - 2-EX-425 PLATEFIN REGENERATION GAS EXCHANGER
 - 2-EX-470 PLATEFIN FEED GAS CHILLER
- PLATEFIN:**
- 2-EX-410 PLATEFIN COLD GAS/GAS EXCHANGER
 - 2-EX-420 PLATEFIN SUB-COOLER
 - 2-EX-475 PLATEFIN REFRIGERANT COOLER

- 2-EX-460 TRIM REBOILER
- 2-FI-800 INLET GAS FILTER SEPARATOR (S.L.)
- 2-PV-110 DEHYDRATOR
- 2-PV-115 DEHYDRATOR
- 2-PV-120 DEHYDRATOR
- 2-PV-160 COLD SEPARATOR
- 2-PV-190 PRODUCT SURGE TANK
- 2-PV-1000 LIGHT ENDS FRACTIONATION COLUMN (LEFC)
- 2-PV-1100 HEAVY ENDS FRACTIONATION COLUMN (HEFC)

- 2-MODULE 01 - PROCESS MODULE**
- 2-CM-620 REGENERATION GAS COMPRESSOR
 - 2-FI-810 A/B INLET DUST FILTERS
 - 2-PV-130 REGENERATION GAS SCRUBBER
- 2-MODULE 02 - PUMP MODULE**
- 2-PM-10 A/B/C LEFC BOTTOMS PUMPS
 - 2-PM-900 METHANOL INJECTION PUMP
- 2-MODULE 06 - REFRIGERATION MODULE**
- 2-PV-220 REFRIGERANT DISENGAGING VESSEL
- 2-MODULE 07 - REFRIGERATION MODULE**
- 2-PV-225 REFRIGERANT DISENGAGING VESSEL
- 2-MODULE 08 - REFRIGERATION MODULE**
- 2-PV-230 REFRIGERANT DISENGAGING VESSEL
- 2-MODULE 12 - HEFC PUMP MODULE**
- 2-PM-25 A/D HEFC BOTTOMS PUMPS

- AREA 55 HEATERS**
- E-21171 CRYO PREHEAT EXCHANGER
 - F-21173 CRYO INLET COALESCER
 - PLANT FLARE
 - H-21610 CRYO HOT OIL HEATER
 - 2-AC-720 PRODUCT COOLER
 - 2-HT-750 REGENERATION GAS HEATER

- AREA 56 FLARE**
- GN-22650 CRYO GENERATOR
 - P-21801 PLANT FLARE PUMP
 - V-21801 PLANT FLARE KNOCKOUT DRUM

- AREA 57 REFRIGERATION COMPRESSION**
- V-21701 INSTRUMENT AIR VOLUME BOTTLE
 - P-21420A/B/C CRYO NGL PIPELINE PUMPS
 - 2-CM-625 REFRIGERATION COMPRESSOR
 - 2-CM-630 REFRIGERATION COMPRESSOR
 - 2-PV-240 REFRIGERANT SUCTION SCRUBBER
 - 2-PV-215 REFRIGERANT ECNDMIZER

- BUILDINGS**
- GEN-1103 STABILIZER EMERGENCY GENERATOR
 - GEN-1104 CRYO EMERGENCY GENERATOR
 - PDC-1101 COMPRESSOR PDC BUILDING
 - PDC-1103 STABILIZER PDC BUILDING
 - PDC-1104 CRYO PDC BUILDING
 - 2-BU-600 OFFICE / WAREHOUSE / OPERATIONS BUILDING
 - 2-BU-610 RESIDUE COMPRESSOR BUILDING
 - 2-BU-620 REFRIGERATION COMPRESSOR BUILDING

GENERAL NOTES:
1. PLANT NORTH 0'-0" = 17341530.27, EAST 0'-0" = 2076127.68

PLANT NORTH 0'-0" = 17341530.27
EAST 0'-0" = 2076127.68

THE REPRODUCTION, DISTRIBUTION AND UTILIZATION OF THIS DOCUMENT AS WELL AS THE COMMUNICATION OF ITS CONTENTS TO OTHERS WITHOUT EXPRESS AUTHORIZATION IS PROHIBITED. OFFENDERS WILL BE HELD LIABLE FOR THE PAYMENT OF DAMAGES. ALL RIGHTS RESERVED IN THE EVENT OF THE GRANT OF A PATENT, UTILITY MODEL OR DESIGN. REFER TO PROTECTION NOTICE 15818616

STATUS	ISSUE	DESCRIPTION	BY	CHK	REVIEW	APPR	DATE
IFC	2.0	ISSUE FOR CONSTRUCTION	JAS	JT	JAS	ETM	06-04-18
IFD	1.0	ISSUED FOR DESIGN	JAS	JT	JAS	ETM	05-01-18

Linde Engineering North America, Inc.

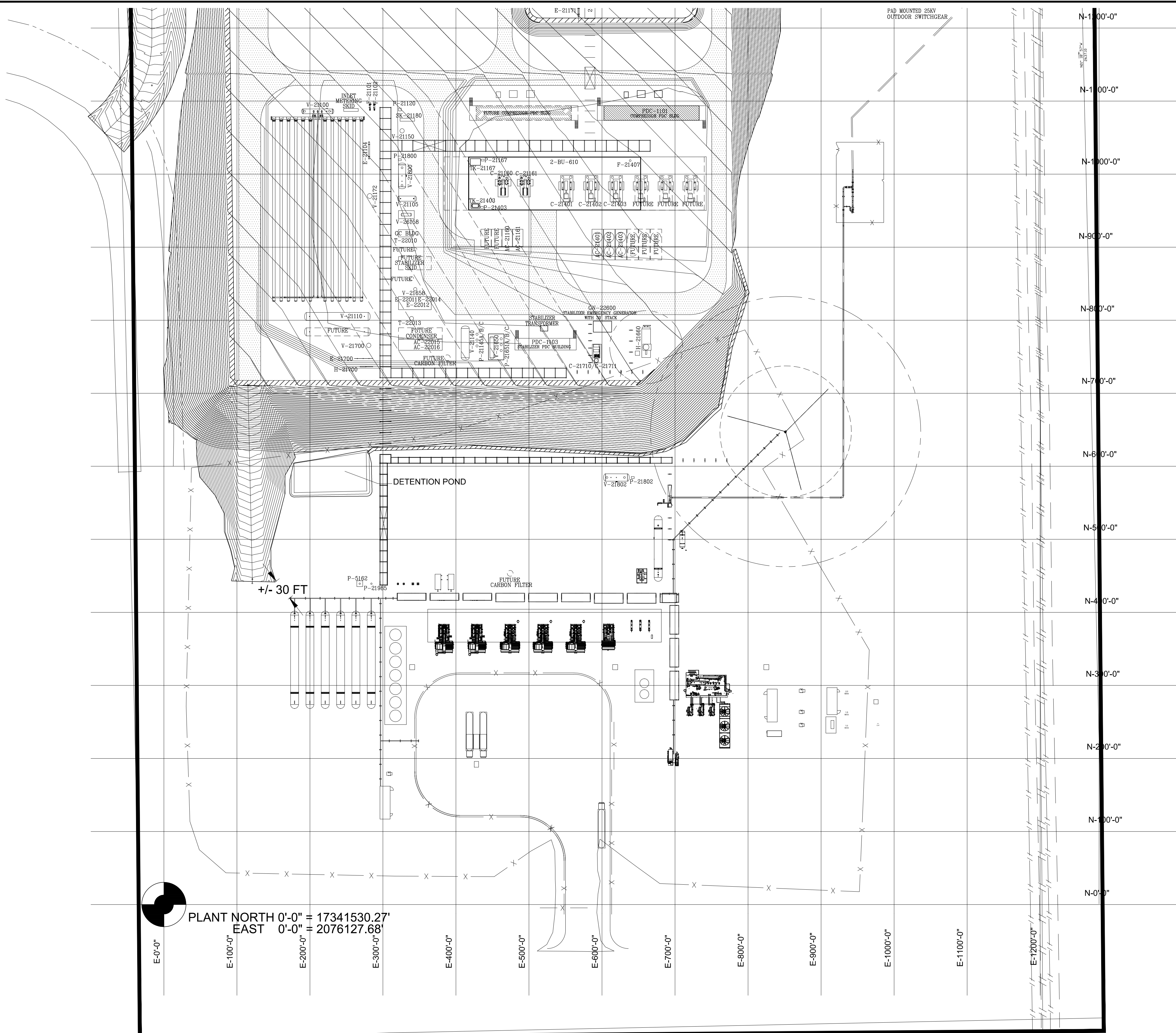
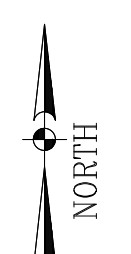
Crestwood

OVERALL PLOT PLAN
RJT & BOP / NORTH PLANT CRYO AREA
120 MMSCFD LIQUID RECOVERY UNIT

BEAR DEN GAS PLANT MCKENZIE COUNTY, ND

SCALE: NONE DWG. 000-L-ZP-1001 ISSUE 2.0

Jun 04, 2018 - 4:21pm D:\211044VC_BEAR_DEN_GAS_PLANT\2130_Piping_Design\Plot Plans\IFC-06-04-18\Plot Plan - BOP-06-04-18.dwg



PLANT NORTH 0'-0" = 17341530.27'
 EAST 0'-0" = 2076127.68'

- AREA 00 UNDERGROUND**
- AREA 51 INLET & 52 STABILIZER**
- AC-21160 COOLER
 - AC-21161 COOLER
 - AC-21401 GAS COOLER
 - AC-21402 GAS COOLER
 - AC-21403 GAS COOLER
 - AC-22015/16 PRODUCT COOLER/STABILIZER DVHD CONDENSER
 - C-21160 OVERHEAD COMPRESSOR
 - C-21161 OVERHEAD COMPRESSOR
 - C-21401 RESIDUE COMPRESSOR
 - C-21402 RESIDUE COMPRESSOR
 - C-21403 RESIDUE COMPRESSOR
 - C-21710/21711 INSTRUMENT AIR COMPRESSOR
 - DG-1103 STABILIZER GENERATOR
 - E-21104 HP CONDENSATE EXCHANGER
 - E-21700 FUEL GAS HEATER
 - E-22011 DEETHANIZER REBOILER
 - E-22012 FEED/BOTTOMS EXCHANGER
 - E-22014 STABILIZER REBOILER
 - F-21101 CONDENSATE FILTER
 - F-21102 CONDENSATE FILTER
 - F-21407 RESIDUE GAS COALESCE
 - H-21660 STABILIZER THERMAL FLUID HEATER
 - H-21700 FUEL GAS HEATER
 - P-21120 METHANOL PUMP
 - P-5162 STABILIZER NGL PIPELINE PUMP
 - P-21145A/B/C STABILIZER NGL BOOSTER PUMPS
 - P-21167 SUMP PUMP
 - P-21403 LUBE OIL PUMP
 - P-21650A/B STABILIZER HOT OIL PUMPS
 - P-21800 STABILIZER FLARE PUMP
 - P-21803 FLARE KO PUMP
 - P-21955 CONDENSATE RETURN PUMP
 - V-21100 INLET SLUG CATCHER
 - V-21105 HP SEPARATOR
 - V-21110 CONDENSATE SURGE TANK
 - V-21110 STABILIZER NGL SURGE
 - V-21150 V-21172 DH COMPRESSOR SUCTION SCRUBBER
 - V-21172 RAW GAS SEPARATOR
 - V-21650 STABILIZER HOT OIL EXPANSION TANK
 - V-21658 HOT OIL RELIEF TANK
 - V-21700 FUEL GAS SCRUBBER
 - V-21800 STABILIZER FLARE KNOCKOUT
 - V-21803 FLARE KO DRUM
 - SK-21180 TARGA METERING SKID
 - TK-21403 COMPRESSOR LUBE OIL TANK
 - TK-21167 SUMP TANK
 - T-22013 STABILIZER TOWER
 - T-22010 DEETHANIZER TOWER
 - WL-112 PIG LAUNCHER (BY OTHERS)
 - WL-114 PIG LAUNCHER (BY OTHERS)
 - WR-111 PIG RECEIVER (BY OTHERS)
- BUILDINGS**
- 2-BU-610 RESIDUE COMPRESSOR BUILDING
 - PDC-1101 COMPRESSOR PDC BUILDING
 - PDC-1103 STABILIZER PDC BUILDING
 - GEN-1103 STABILIZER EMERGENCY GENERATOR

GENERAL NOTES:
 1. PLANT NORTH 0'-0" = 17341530.27, EAST 0'-0" = 2076127.68

THE REPRODUCTION, DISTRIBUTION AND UTILIZATION OF THIS DOCUMENT AS WELL AS THE COMMUNICATION OF ITS CONTENTS TO OTHERS WITHOUT EXPRESS AUTHORIZATION IS PROHIBITED. OFFENDERS WILL BE HELD LIABLE FOR THE PAYMENT OF DAMAGES. ALL RIGHTS RESERVED IN THE EVENT OF THE GRANT OF A PATENT, UTILITY MODEL OR DESIGN. REFER TO PROTECTION NOTICE 15518616

STATUS	ISSUE	DESCRIPTION	BY	CHK	REVIEW	APPR	DATE
IFC	2.0	ISSUE FOR CONSTRUCTION	JAS	JT	JAS	ETM	06-04-18
IFD	1.0	ISSUED FOR DESIGN	JAS	JT	JAS	ETM	05-01-18

Linde Engineering North America, Inc.

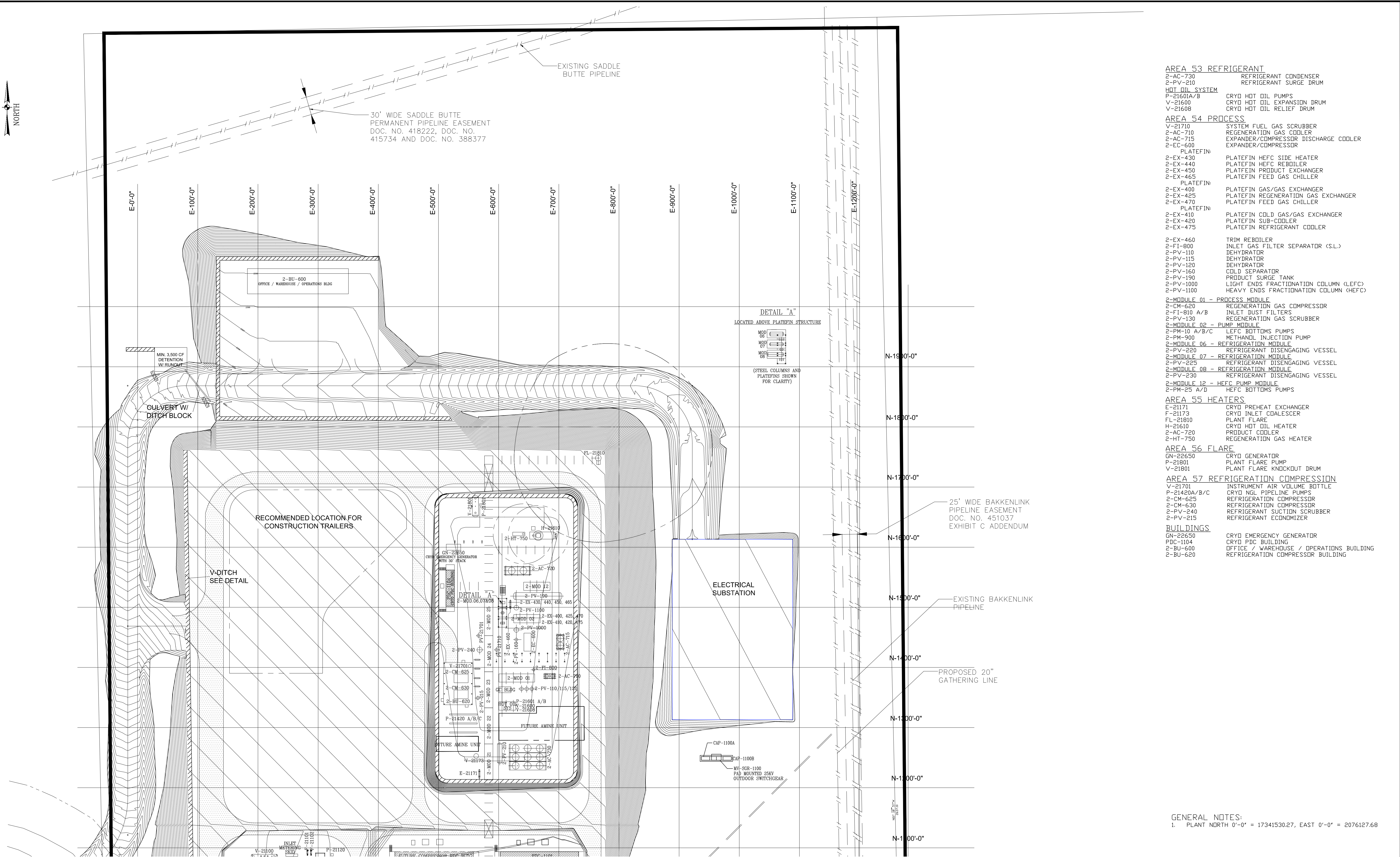
Crestwood

PLOT PLAN
 SOUTH PLANT STABILIZER AREA
 120 MMSCFD LIQUID RECOVERY UNIT

BEAR DEN GAS PLANT MCKENZIE COUNTY, ND

SCALE: NONE | DWG. 000-L-ZP-1002 | ISSUE 2.0

Jun 04, 2018 - 4:22pm O:\211044WC BEAR DEN GAS PLANT\2130 Piping Design\Plot Plans\FC-06-04-18\Plot Plan - North CRYO - 06-04-18.dwg



- AREA 53 REFRIGERANT**
- 2-AC-730 REFRIGERANT CONDENSER
- 2-PV-210 REFRIGERANT SURGE DRUM
- HOT OIL SYSTEM**
- P-21601A/B CRYO HOT OIL PUMPS
- V-21600 CRYO HOT OIL EXPANSION DRUM
- V-21608 CRYO HOT OIL RELIEF DRUM
- AREA 54 PROCESS**
- V-21710 SYSTEM FUEL GAS SCRUBBER
- 2-AC-710 REGENERATION GAS COOLER
- 2-AC-715 EXPANDER/COMPRESSOR DISCHARGE COOLER
- 2-EC-600 EXPANDER/COMPRESSOR
- PLATEFIN:**
- 2-EX-430 PLATEFIN HEFC SIDE HEATER
- 2-EX-440 PLATEFIN HEFC REBOILER
- 2-EX-450 PLATEFIN PRODUCT EXCHANGER
- 2-EX-465 PLATEFIN FEED GAS CHILLER
- PLATEFIN:**
- 2-EX-400 PLATEFIN GAS/GAS EXCHANGER
- 2-EX-425 PLATEFIN REGENERATION GAS EXCHANGER
- 2-EX-470 PLATEFIN FEED GAS CHILLER
- PLATEFIN:**
- 2-EX-410 PLATEFIN COLD GAS/GAS EXCHANGER
- 2-EX-420 PLATEFIN SUB-COOLER
- 2-EX-475 PLATEFIN REFRIGERANT COOLER
- 2-EX-460 TRIM REBOILER
- 2-FI-800 INLET GAS FILTER SEPARATOR (S.L.)
- 2-PV-110 DEHYDRATOR
- 2-PV-115 DEHYDRATOR
- 2-PV-120 DEHYDRATOR
- 2-PV-160 COLD SEPARATOR
- 2-PV-190 PRODUCT SURGE TANK
- 2-PV-1000 LIGHT ENDS FRACTIONATION COLUMN (LEFC)
- 2-PV-1100 HEAVY ENDS FRACTIONATION COLUMN (HEFC)
- 2-MODULE 01 - PROCESS MODULE**
- 2-CM-620 REGENERATION GAS COMPRESSOR
- 2-FI-810 A/B INLET DUST FILTERS
- 2-PV-130 REGENERATION GAS SCRUBBER
- 2-MODULE 02 - PUMP MODULE**
- 2-PM-10 A/B/C LEFC BOTTOMS PUMPS
- 2-PM-900 METHANOL INJECTION PUMP
- 2-MODULE 06 - REFRIGERATION MODULE**
- 2-PV-220 REFRIGERANT DISENGAGING VESSEL
- 2-MODULE 07 - REFRIGERATION MODULE**
- 2-PV-225 REFRIGERANT DISENGAGING VESSEL
- 2-MODULE 08 - REFRIGERATION MODULE**
- 2-PV-230 REFRIGERANT DISENGAGING VESSEL
- 2-MODULE 12 - HEFC PUMP MODULE**
- 2-PM-25 A/D HEFC BOTTOMS PUMPS
- AREA 55 HEATERS**
- E-21171 CRYO PREHEAT EXCHANGER
- F-21173 CRYO INLET COALESCE
- FL-21810 PLANT FLARE
- H-21610 CRYO HOT OIL HEATER
- 2-AC-720 PRODUCT COOLER
- 2-HT-750 REGENERATION GAS HEATER
- AREA 56 FLARE**
- GN-22650 CRYO GENERATOR
- P-21801 PLANT FLARE PUMP
- V-21801 PLANT FLARE KNOCKOUT DRUM
- AREA 57 REFRIGERATION COMPRESSION**
- V-21701 INSTRUMENT AIR VOLUME BOTTLE
- P-21420A/B/C CRYO NGL PIPELINE PUMPS
- 2-CM-625 REFRIGERATION COMPRESSOR
- 2-CM-630 REFRIGERATION COMPRESSOR
- 2-PV-240 REFRIGERANT SUCTION SCRUBBER
- 2-PV-215 REFRIGERANT ECONOMIZER
- BUILDINGS**
- GN-22650 CRYO EMERGENCY GENERATOR
- PDC-1104 CRYO PDC BUILDING
- 2-BU-600 OFFICE / WAREHOUSE / OPERATIONS BUILDING
- 2-BU-620 REFRIGERATION COMPRESSOR BUILDING

GENERAL NOTES:
 1. PLANT NORTH 0'-0" = 17341530.27, EAST 0'-0" = 2076127.68

THE REPRODUCTION, DISTRIBUTION AND UTILIZATION OF THIS DOCUMENT AS WELL AS THE COMMUNICATION OF ITS CONTENTS TO OTHERS WITHOUT EXPRESS AUTHORIZATION IS PROHIBITED. OFFENDERS WILL BE HELD LIABLE FOR THE PAYMENT OF DAMAGES. ALL RIGHTS RESERVED IN THE EVENT OF THE GRANT OF A PATENT, UTILITY MODEL OR DESIGN. REFER TO PROTECTION NOTICE 15818616

STATUS	ISSUE	DESCRIPTION	BY	CHK	REVIEW	APPR	DATE
IFC	2.0	ISSUE FOR CONSTRUCTION	JAS	JT	JAS	ETM	06-04-18
IFD	1.0	ISSUED FOR DESIGN	JAS	JT	JAS	ETM	05-01-18

Linde Engineering North America, Inc.

Crestwood

PLOT PLAN
 NORTH PLANT CRYO AREA
 120 MMSCFD LIQUID RECOVERY UNIT

BEAR DEN GAS PLANT MCKENZIE COUNTY, ND

SCALE: NONE | DWG. 000-L-ZP-1003 | ISSUE 2.0