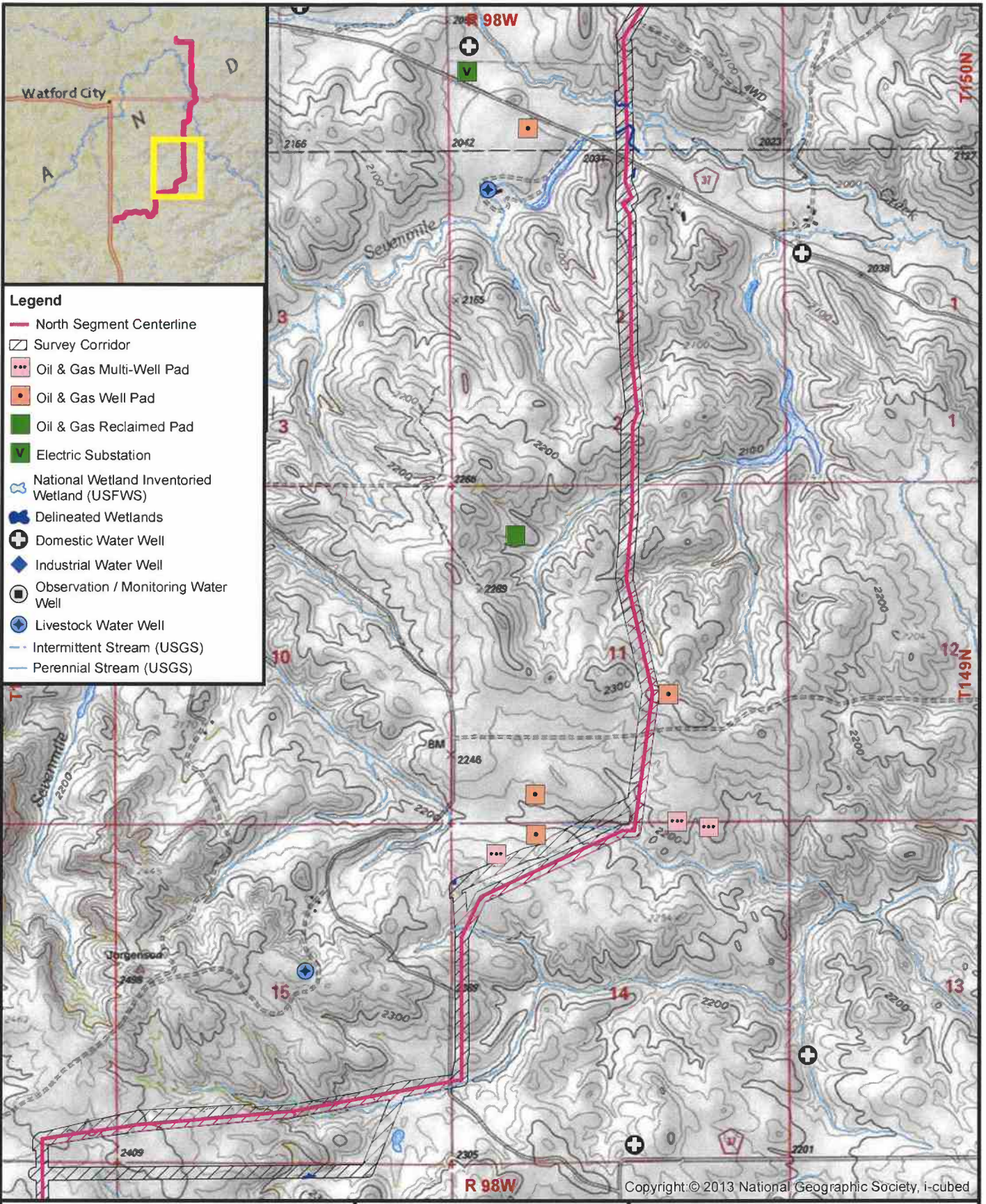


R:\projects\7000-7500\7070 - YGrade North\GIS\Storm Water permit\Project Location North 1-.mxd

January 2018



**Legend**

- North Segment Centerline
- ▭ Survey Corridor
- Oil & Gas Multi-Well Pad
- ◻ Oil & Gas Well Pad
- ◻ Oil & Gas Reclaimed Pad
- ⊕ Electric Substation
- ⊕ National Wetland Inventoried Wetland (USFWS)
- ⊕ Delineated Wetlands
- ⊕ Domestic Water Well
- ⊕ Industrial Water Well
- ⊕ Observation / Monitoring Water Well
- ⊕ Livestock Water Well
- Intermittent Stream (USGS)
- Perennial Stream (USGS)

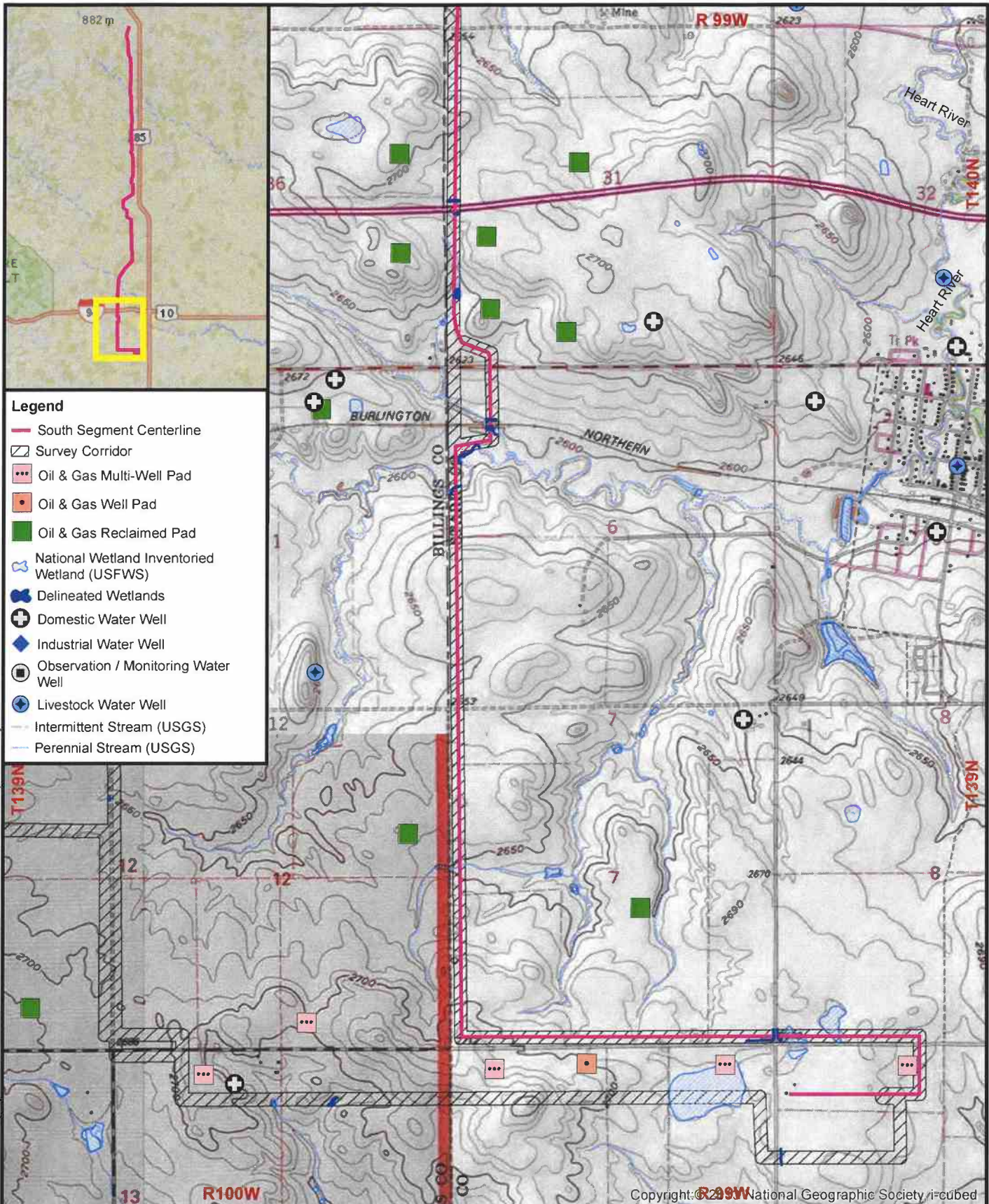


1:24,000 1 inch = 2,000 feet

0 2,000 feet

Basemap: USGS Topography

**Figure 1-3  
North Segment  
Project Location  
Andeavor Y-Grade Hub**



- Legend**
- South Segment Centerline
  - ▭ Survey Corridor
  - ⋯ Oil & Gas Multi-Well Pad
  - Oil & Gas Well Pad
  - Oil & Gas Reclaimed Pad
  - ⊕ National Wetland Inventoried Wetland (USFWS)
  - ⊕ Delineated Wetlands
  - ⊕ Domestic Water Well
  - ⊕ Industrial Water Well
  - ⊕ Observation / Monitoring Water Well
  - ⊕ Livestock Water Well
  - Intermittent Stream (USGS)
  - Perennial Stream (USGS)

R:\projects\7000-7500\7070 - YGrade North\GIS\Storm Water\permit\Project Location South 2-.mxd

Copyright © 2019 National Geographic Society i-cubed

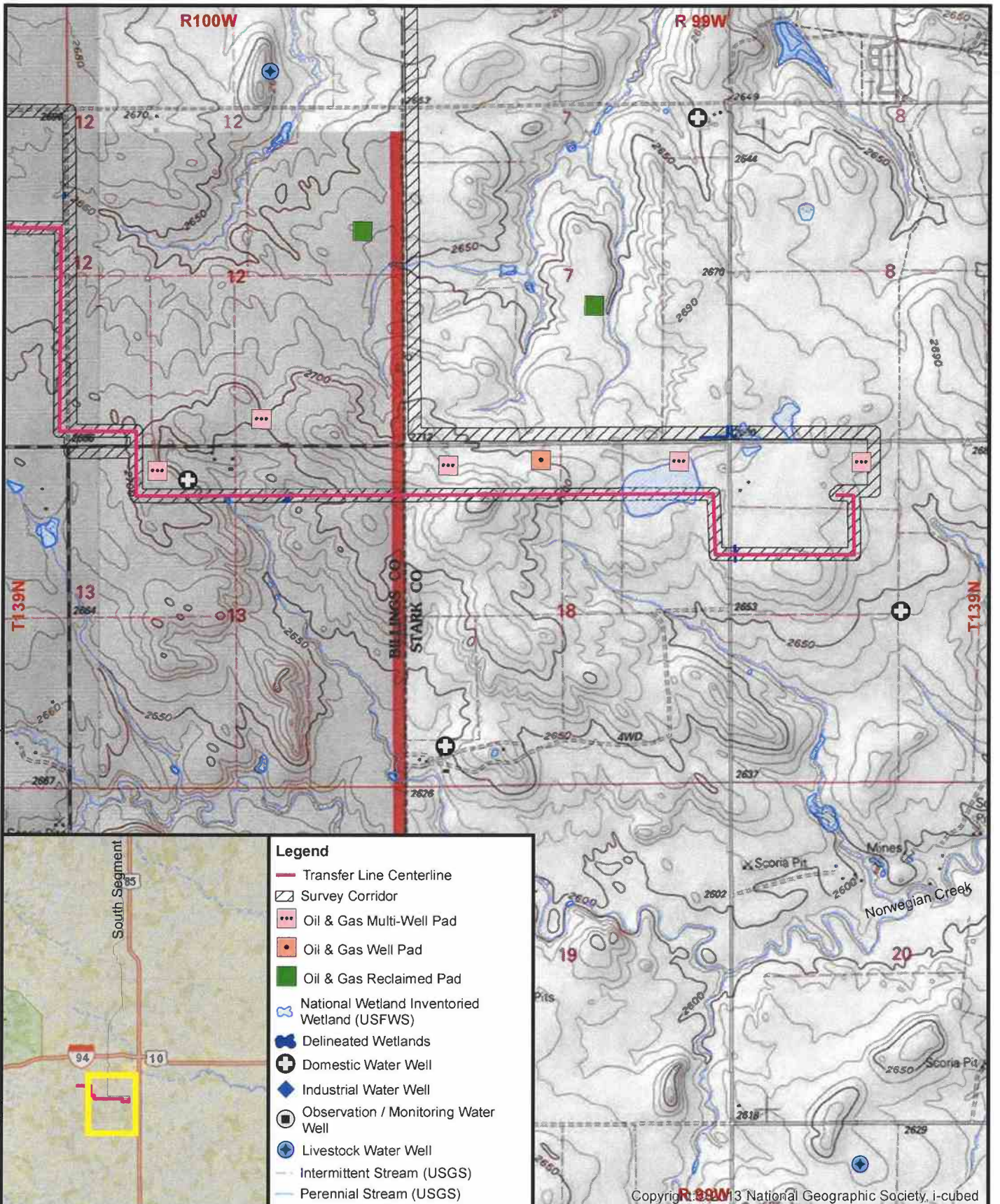
January 2018

**Carlson  
McCain**  
ENVIRONMENTAL ENGINEERING SURVEYING

1:24,000 1 inch = 2,000 feet

Basemap: USGS Topography

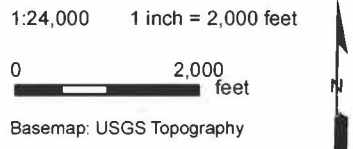
**Figure 2-6**  
**South Segment**  
**Project Location**  
**Andeavor Y-Grade Hub**



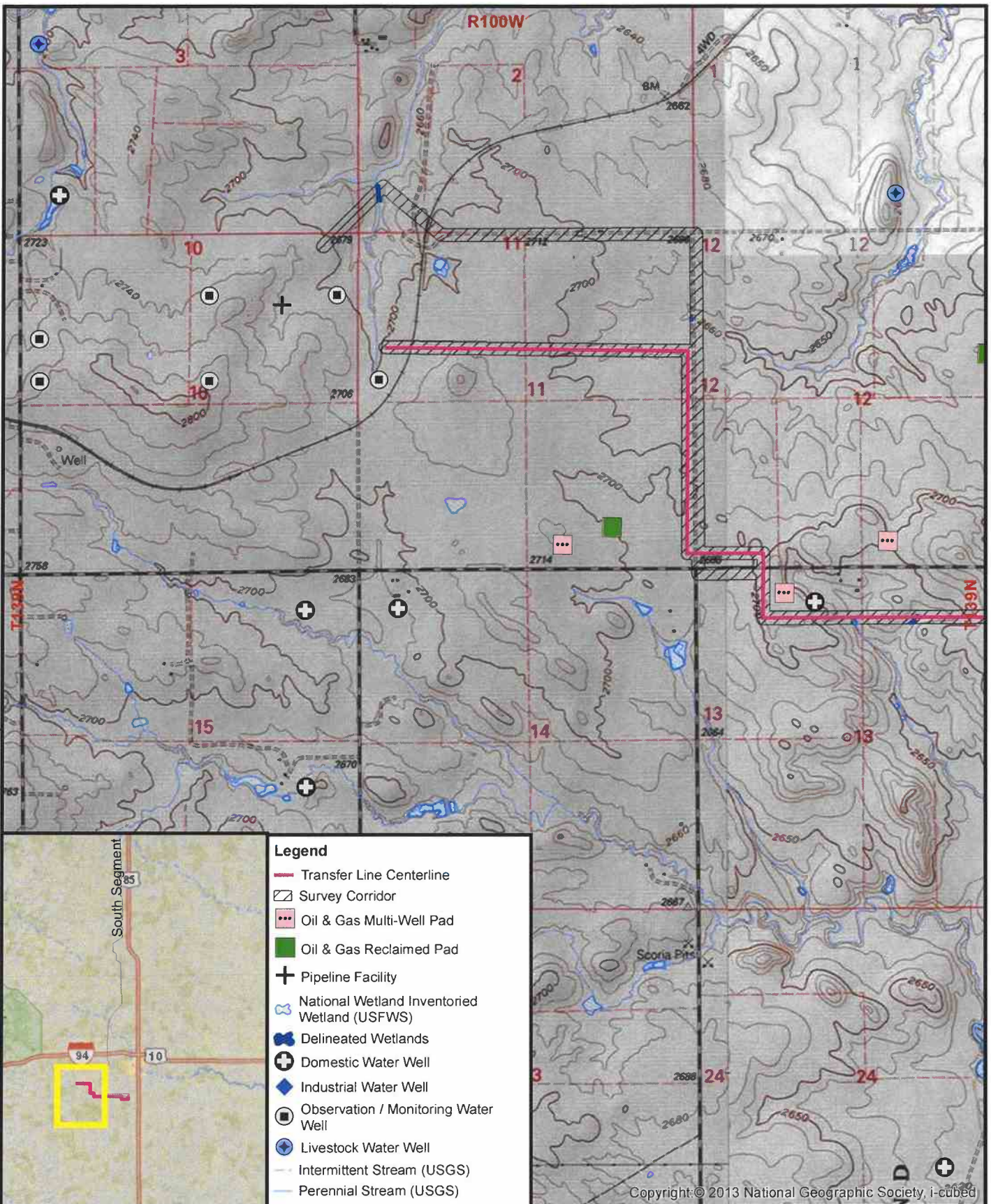
**Legend**

- Transfer Line Centerline
- ▨ Survey Corridor
- Oil & Gas Multi-Well Pad
- Oil & Gas Well Pad
- Oil & Gas Reclaimed Pad
- ☁ National Wetland Inventoried Wetland (USFWS)
- ⊕ Delineated Wetlands
- ⊕ Domestic Water Well
- ◆ Industrial Water Well
- ⊕ Observation / Monitoring Water Well
- ⊕ Livestock Water Well
- Intermittent Stream (USGS)
- Perennial Stream (USGS)

Copyright © 2013 National Geographic Society, i-cubed



**Figure 3-1**  
**Transfer Line Segment**  
**Project Location**  
**Andeavor Y-Grade Hub**



**Legend**

- Transfer Line Centerline
- Survey Corridor
- Oil & Gas Multi-Well Pad
- Oil & Gas Reclaimed Pad
- + Pipeline Facility
- National Wetland Inventoried Wetland (USFWS)
- Delineated Wetlands
- + Domestic Water Well
- ⊕ Observation / Monitoring Water Well
- ⊕ Livestock Water Well
- Intermittent Stream (USGS)
- Perennial Stream (USGS)

Copyright © 2013 National Geographic Society, i-cubed

January, 2018

**Carlson  
McCain**  
ENVIRONMENTAL · ENGINEERING · SURVEYING

1:24,000    1 inch = 2,000 feet

0                      2,000 feet

Basemap: USGS Topography

**Figure 3-2**  
**Transfer Line Segment**  
**Project Location**  
**Andeavor Y-Grade Hub**