

**EMMONS-LOGAN  
WIND ENERGY CENTER  
EMMONS AND LOGAN  
COUNTIES, ND**

**LEGEND**

- County Road
- Existing 230 kV Heskett-Wishek Transmission Line
- County Boundary
- PLSS Township
- PLSS Section
- Occupied Residence - Participating Landowner
- ▼ Occupied Residence - Non-Participating Landowner
- ▨ \*Non-participating Landowner
- ▨ \*\*Non-participating Parcel

**Project Features**

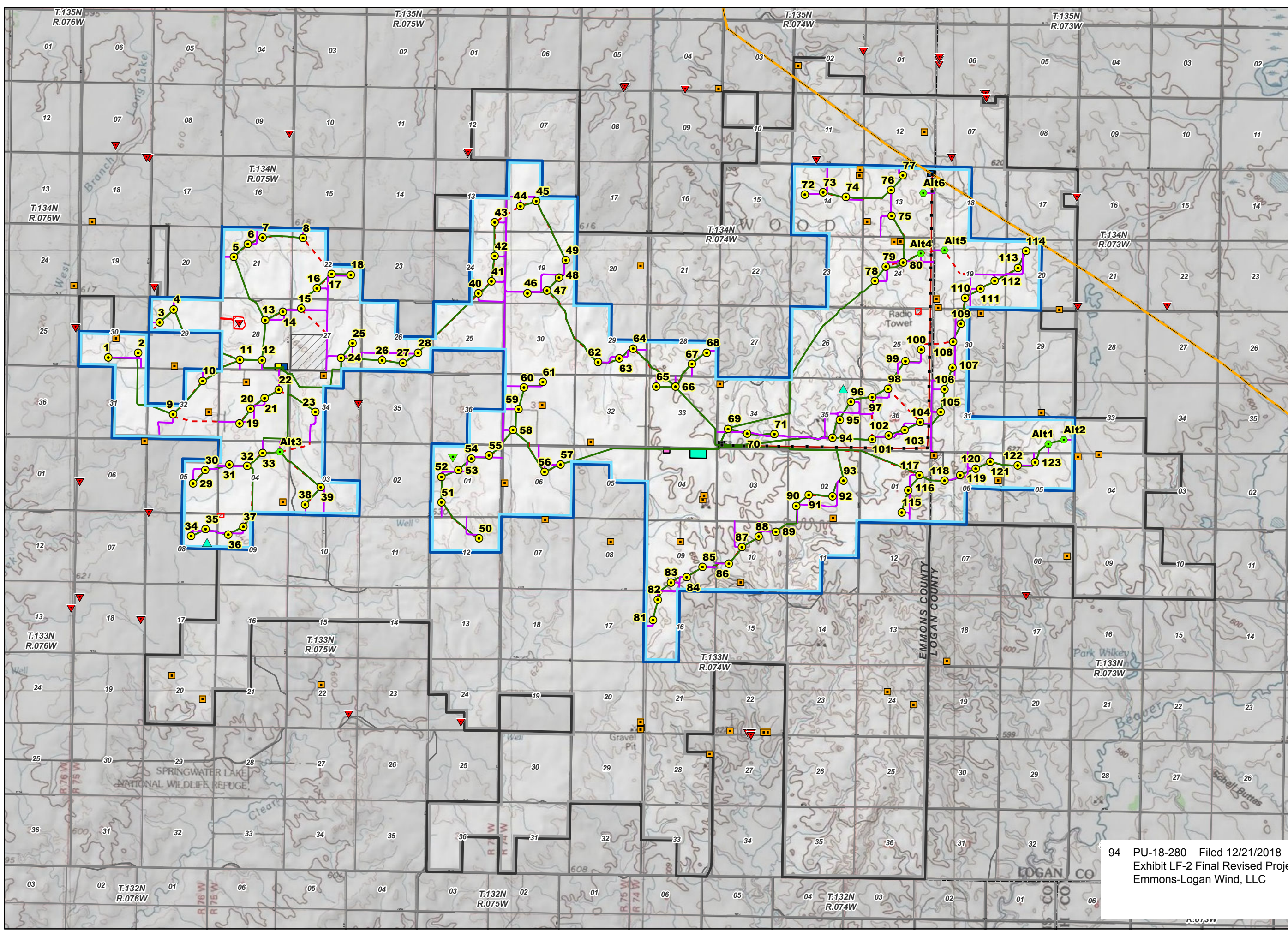
- Turbine
- Alternative Turbine
- ▲ Met Tower
- ▲ Alternative Met Tower
- Service Road
- Collection Line
- - - Crane Path
- 230 kV Transmission Line Route
- 230 kV Transmission Line Corridor
- 230 kV Transmission Line Pole Location
- Original Emmons-Logan Wind Energy Center Project Area (64,563 Acres)
- Revised Emmons-Logan Wind Energy Center Project Area (28,097 Acres)
- Substation
- O&M Building
- Batch Plant
- Laydown Yard

\*Non-participating Landowners outside of the Project Area are not shown on map.

\*\*Owns land participating in the Project Area elsewhere.



0 1 2



94 PU-18-280 Filed 12/21/2018 Pages: 1  
Exhibit LF-2 Final Revised Project Area Map  
Emmons-Logan Wind, LLC